



## United States Department of the Interior



FISH AND WILDLIFE SERVICE  
Virginia Ecological Services Field Office  
6669 Short Lane  
Gloucester, VA 23061-4410  
Phone: (804) 693-6694 Fax: (804) 693-9032  
<http://www.fws.gov/northeast/virginiafield/>

In Reply Refer To:  
Consultation Code: 05E2VA00-2021-SLI-1530  
Event Code: 05E2VA00-2021-E-04472  
Project Name: Elmont-Ladysmith 500kV Rebuild

January 15, 2021

Subject: List of threatened and endangered species that may occur in your proposed project location or may be affected by your proposed project

### To Whom It May Concern:

The enclosed species list identifies threatened, endangered, proposed and candidate species, as well as proposed and final designated critical habitat, that may occur within the boundary of your proposed project and/or may be affected by your proposed project. The species list fulfills the requirements of the U.S. Fish and Wildlife Service (Service) under section 7(c) of the Endangered Species Act (Act) of 1973, as amended (16 U.S.C. 1531 *et seq.*). Any activity proposed on National Wildlife Refuge lands must undergo a 'Compatibility Determination' conducted by the Refuge. Please contact the individual Refuges to discuss any questions or concerns.

New information based on updated surveys, changes in the abundance and distribution of species, changed habitat conditions, or other factors could change this list. Please feel free to contact us if you need more current information or assistance regarding the potential impacts to federally proposed, listed, and candidate species and federally designated and proposed critical habitat. Please note that under 50 CFR 402.12(e) of the regulations implementing section 7 of the Act, the accuracy of this species list should be verified after 90 days. This verification can be completed formally or informally as desired. The Service recommends that verification be completed by visiting the ECOS-IPaC website at regular intervals during project planning and implementation for updates to species lists and information. An updated list may be requested through the ECOS-IPaC system by completing the same process used to receive the enclosed list.

The purpose of the Act is to provide a means whereby threatened and endangered species and the ecosystems upon which they depend may be conserved. Under sections 7(a)(1) and 7(a)(2) of the Act and its implementing regulations (50 CFR 402 *et seq.*), Federal agencies are required to utilize their authorities to carry out programs for the conservation of threatened and endangered

species and to determine whether projects may affect threatened and endangered species and/or designated critical habitat.

A Biological Assessment is required for construction projects (or other undertakings having similar physical impacts) that are major Federal actions significantly affecting the quality of the human environment as defined in the National Environmental Policy Act (42 U.S.C. 4332(2)(c)). For projects other than major construction activities, the Service suggests that a biological evaluation similar to a Biological Assessment be prepared to determine whether the project may affect listed or proposed species and/or designated or proposed critical habitat. Recommended contents of a Biological Assessment are described at 50 CFR 402.12.

If a Federal agency determines, based on the Biological Assessment or biological evaluation, that listed species and/or designated critical habitat may be affected by the proposed project, the agency is required to consult with the Service pursuant to 50 CFR 402. In addition, the Service recommends that candidate species, proposed species and proposed critical habitat be addressed within the consultation. More information on the regulations and procedures for section 7 consultation, including the role of permit or license applicants, can be found in the "Endangered Species Consultation Handbook" at:

<http://www.fws.gov/endangered/esa-library/pdf/TOC-GLOS.PDF>

Please be aware that bald and golden eagles are protected under the Bald and Golden Eagle Protection Act (16 U.S.C. 668 *et seq.*), and projects affecting these species may require development of an eagle conservation plan ([http://www.fws.gov/windenergy/eagle\\_guidance.html](http://www.fws.gov/windenergy/eagle_guidance.html)). Additionally, wind energy projects should follow the wind energy guidelines (<http://www.fws.gov/windenergy/>) for minimizing impacts to migratory birds and bats.

Guidance for minimizing impacts to migratory birds for projects including communications towers (e.g., cellular, digital television, radio, and emergency broadcast) can be found at: <http://www.fws.gov/migratorybirds/CurrentBirdIssues/Hazards/towers/towers.htm>; <http://www.towerkill.com>; and <http://www.fws.gov/migratorybirds/CurrentBirdIssues/Hazards/towers/comtow.html>.

We appreciate your concern for threatened and endangered species. The Service encourages Federal agencies to include conservation of threatened and endangered species into their project planning to further the purposes of the Act. Please include the Consultation Tracking Number in the header of this letter with any request for consultation or correspondence about your project that you submit to our office.

Attachment(s):

- Official Species List
  - USFWS National Wildlife Refuges and Fish Hatcheries
-

## Official Species List

This list is provided pursuant to Section 7 of the Endangered Species Act, and fulfills the requirement for Federal agencies to "request of the Secretary of the Interior information whether any species which is listed or proposed to be listed may be present in the area of a proposed action".

This species list is provided by:

**Virginia Ecological Services Field Office**

6669 Short Lane

Gloucester, VA 23061-4410

(804) 693-6694

---

## Project Summary

Consultation Code: 05E2VA00-2021-SLI-1530

Event Code: 05E2VA00-2021-E-04472

Project Name: Elmont-Ladysmith 500kV Rebuild

Project Type: TRANSMISSION LINE

Project Description: Transmission line rebuild

Project Location:

Approximate location of the project can be viewed in Google Maps: <https://www.google.com/maps/@37.87255385,-77.5472425832169,14z>



Counties: Caroline and Hanover counties, Virginia

## Endangered Species Act Species

There is a total of 4 threatened, endangered, or candidate species on this species list.

Species on this list should be considered in an effects analysis for your project and could include species that exist in another geographic area. For example, certain fish may appear on the species list because a project could affect downstream species.

IPaC does not display listed species or critical habitats under the sole jurisdiction of NOAA Fisheries<sup>1</sup>, as USFWS does not have the authority to speak on behalf of NOAA and the Department of Commerce.

See the "Critical habitats" section below for those critical habitats that lie wholly or partially within your project area under this office's jurisdiction. Please contact the designated FWS office if you have questions.

- 
1. [NOAA Fisheries](#), also known as the National Marine Fisheries Service (NMFS), is an office of the National Oceanic and Atmospheric Administration within the Department of Commerce.

### Mammals

NAME	STATUS
Indiana Bat <i>Myotis sodalis</i> There is <b>final</b> critical habitat for this species. The location of the critical habitat is not available. Species profile: <a href="https://ecos.fws.gov/ecp/species/5949">https://ecos.fws.gov/ecp/species/5949</a>	Endangered
Northern Long-eared Bat <i>Myotis septentrionalis</i> No critical habitat has been designated for this species. Species profile: <a href="https://ecos.fws.gov/ecp/species/9045">https://ecos.fws.gov/ecp/species/9045</a>	Threatened

### Clams

NAME	STATUS
Dwarf Wedgemussel <i>Alasmidonta heterodon</i> No critical habitat has been designated for this species. Species profile: <a href="https://ecos.fws.gov/ecp/species/784">https://ecos.fws.gov/ecp/species/784</a>	Endangered
Yellow Lance <i>Elliptio lanceolata</i> There is <b>proposed</b> critical habitat for this species. The location of the critical habitat is not available. Species profile: <a href="https://ecos.fws.gov/ecp/species/4511">https://ecos.fws.gov/ecp/species/4511</a>	Threatened

### Critical habitats

THERE ARE NO CRITICAL HABITATS WITHIN YOUR PROJECT AREA UNDER THIS OFFICE'S JURISDICTION.

---

## USFWS National Wildlife Refuge Lands And Fish Hatcheries

Any activity proposed on lands managed by the [National Wildlife Refuge](#) system must undergo a 'Compatibility Determination' conducted by the Refuge. Please contact the individual Refuges to discuss any questions or concerns.

THERE ARE NO REFUGE LANDS OR FISH HATCHERIES WITHIN YOUR PROJECT AREA.

---

---

# ATTACHMENT

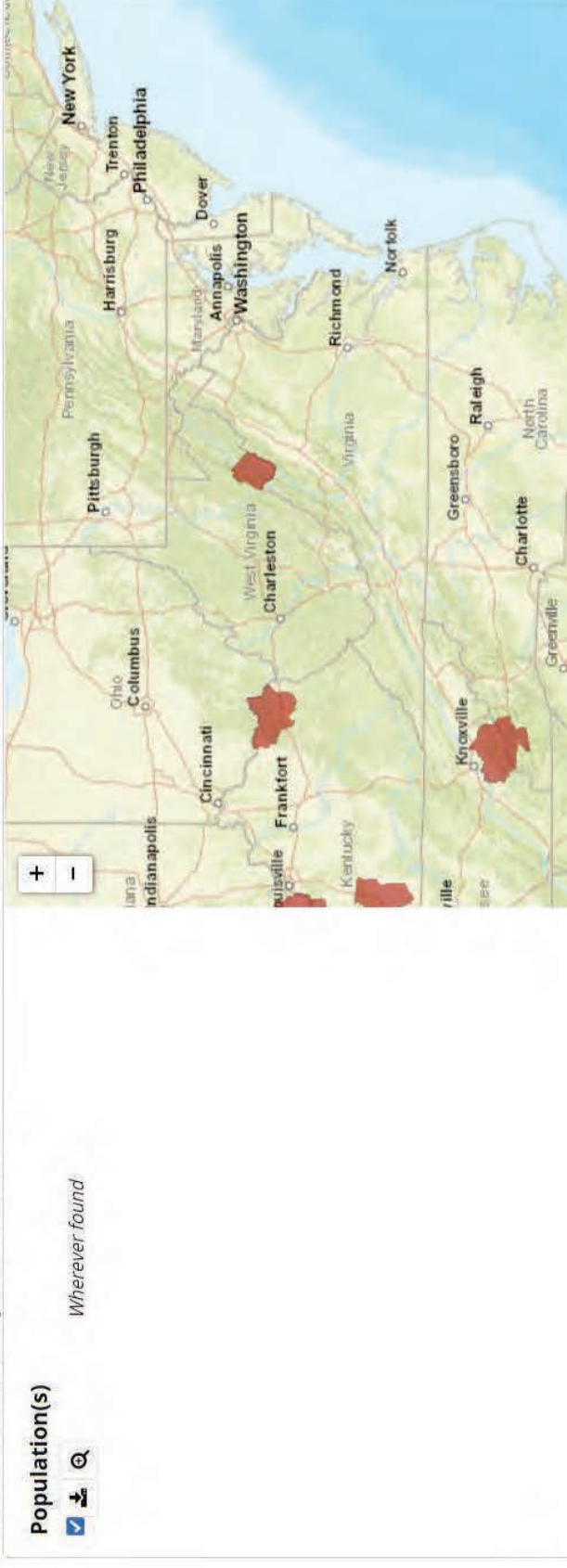
## USFWS Indiana Bat Final Critical Habitat

---

## Indiana Bat Critical Habitat

### » Critical Habitat

#### Critical Habitat Spatial Extents



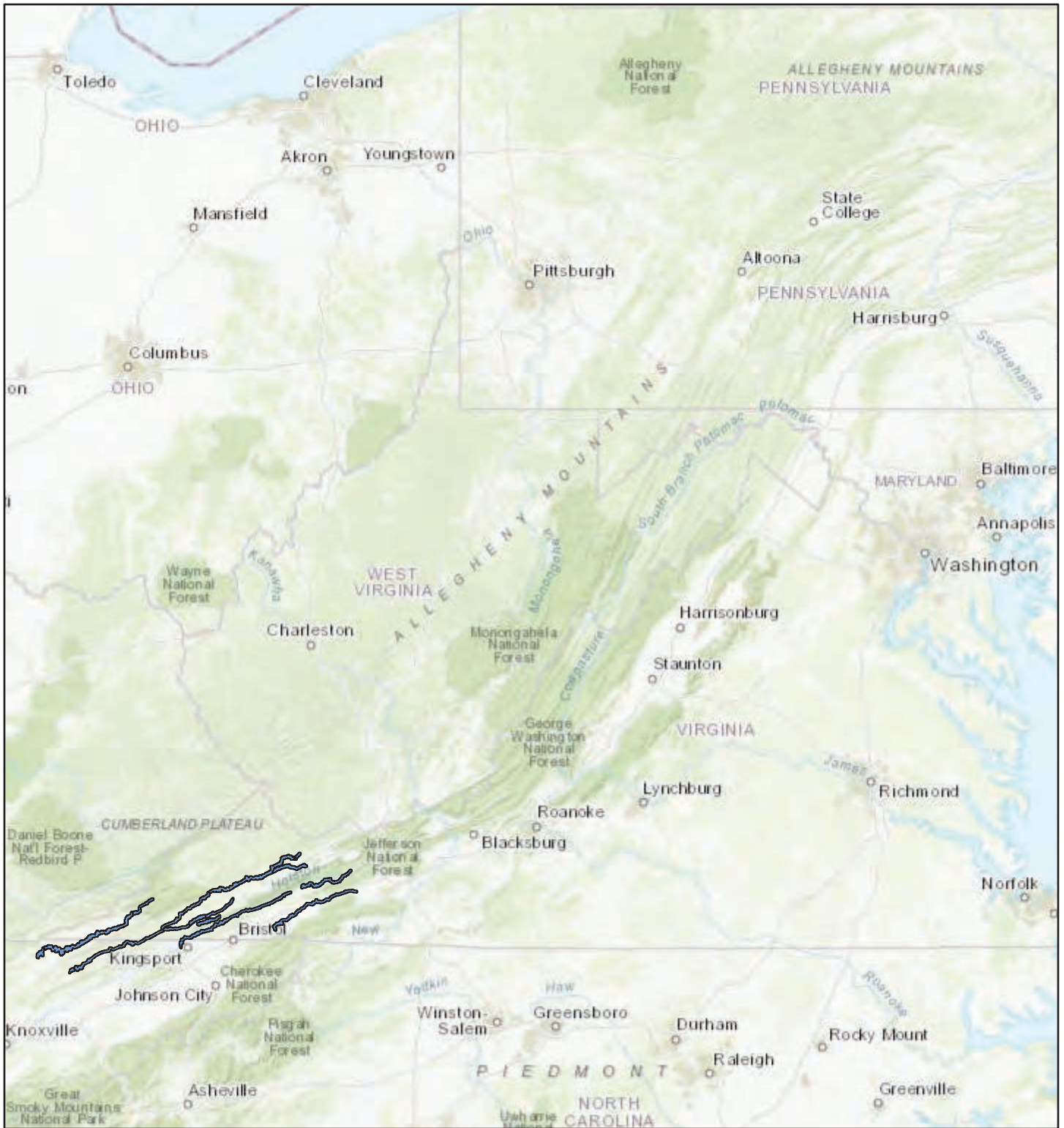
---

# ATTACHMENT


## USFWS VA Field Office Critical Habitat

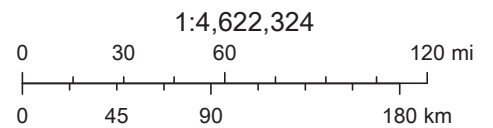
---

# USFWS Critical Habitat Map



January 15, 2021

 Virginia Critical Habitat (published)



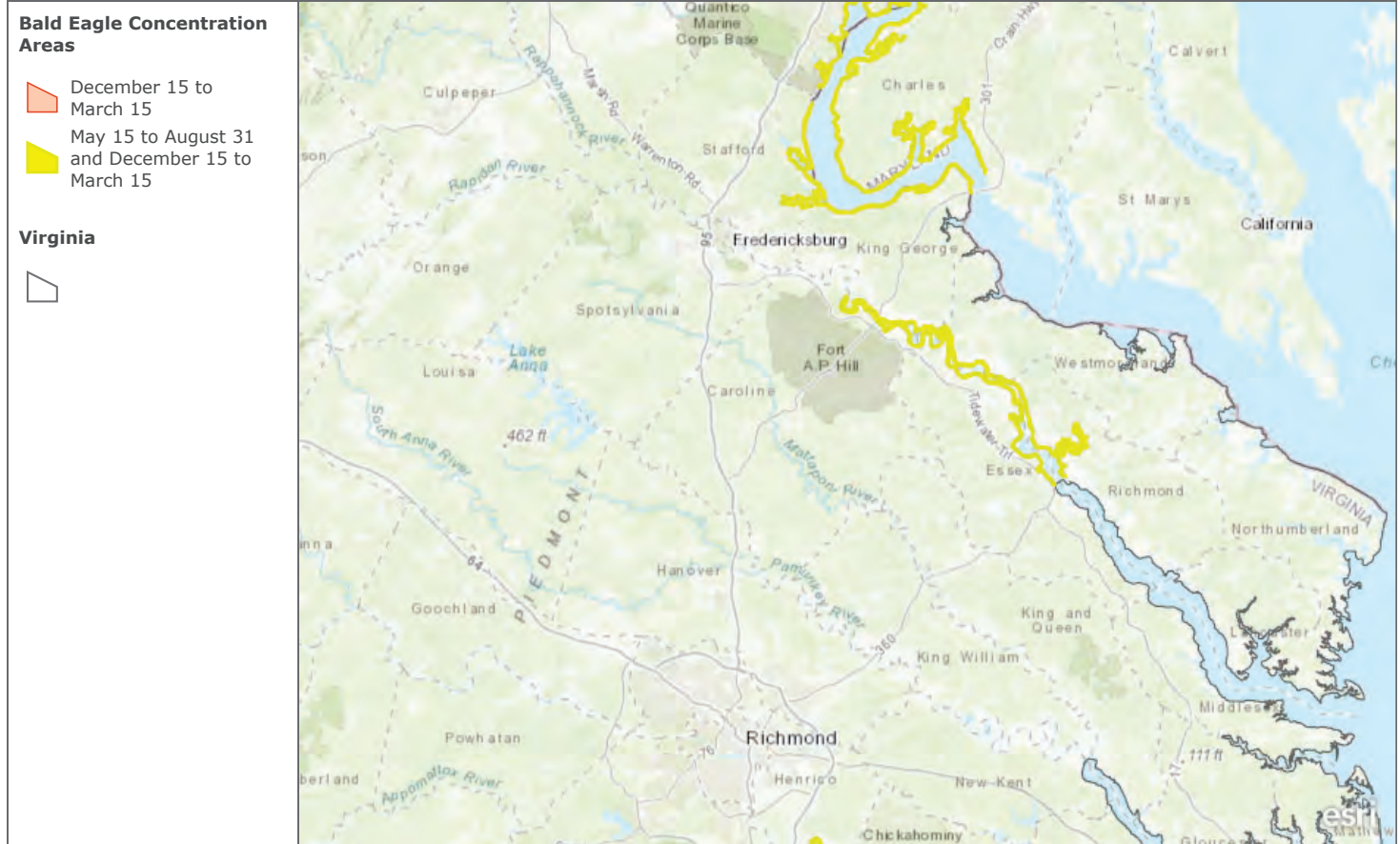
---

# ATTACHMENT

## USFWS Bald Eagle Concentration Area

---

### USFWS Bald Eagle Concentration Areas - Virginia



This map depicts designated Bald Eagle Concentration Areas in the State of Virginia. The Intent of this map is to provide information to the public about shoreline areas that ar ...

Esri, HERE, Garmin, FAO, USGS, NGA, EPA, NPS

---

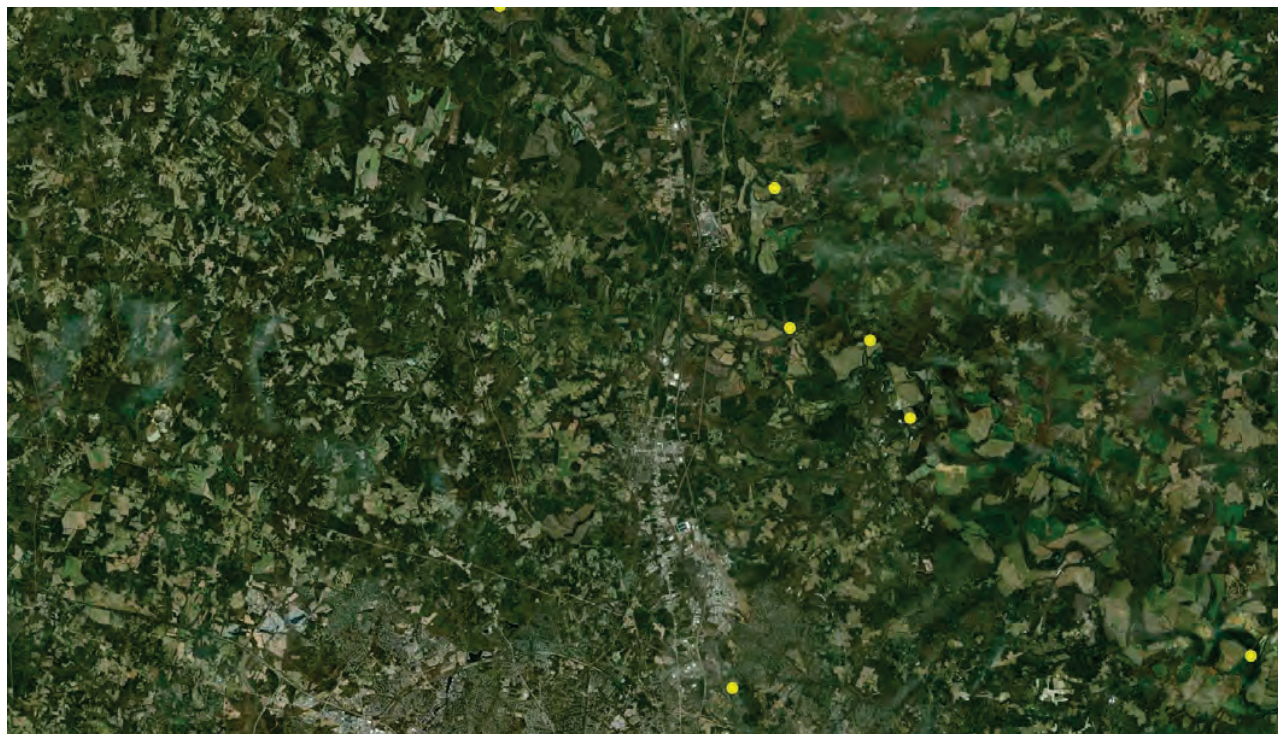
# ATTACHMENT

## CCB Bald Eagle Nest Locator

---



# CCB Mapping Portal



**Layers:** VA Eagle Nest Locator, VA Eagle Nest Buffers, Eagle Roosts, Eagle Roost Buffers

**Map Center [longitude, latitude]:** [-77.49309539794922, 37.78930232286027]

**Map Link:**

[https://ccbbirds.org/maps/#layer=VA+Eagle+Nest+Locator&layer=VA+Eagle+Nest+Buffers&layer=Eagle+Roosts&layer=Eagle+Roost+Buffers&zoom=12&lat=37.78930232286027&lng=-77.49309539794922&legend=legend\\_tab\\_59557df6-c07b-11e5-a485-0e31c9be1b51&base=World+Imagery+%28ESRI%29](https://ccbbirds.org/maps/#layer=VA+Eagle+Nest+Locator&layer=VA+Eagle+Nest+Buffers&layer=Eagle+Roosts&layer=Eagle+Roost+Buffers&zoom=12&lat=37.78930232286027&lng=-77.49309539794922&legend=legend_tab_59557df6-c07b-11e5-a485-0e31c9be1b51&base=World+Imagery+%28ESRI%29)

**Report Generated On:** 01/15/2021

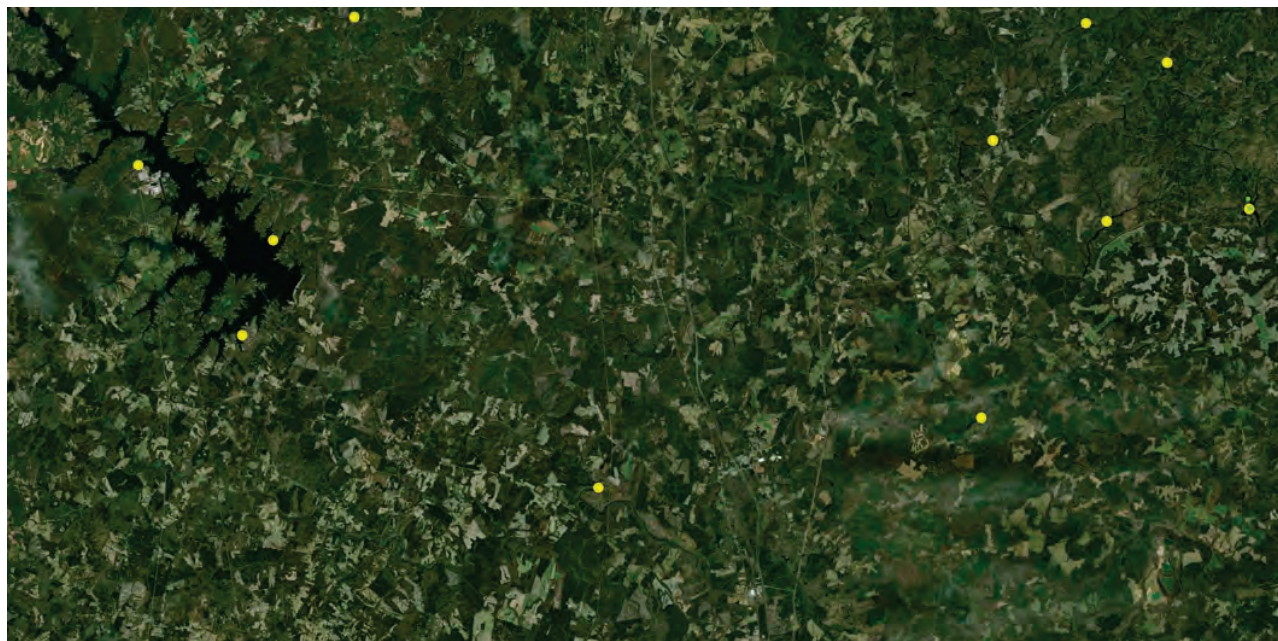
The Center for Conservation Biology (CCB) provides certain data online as a free service to the public and the regulatory sector. CCB encourages the use of its data sets in wildlife conservation and management applications. These data are protected by intellectual property laws. All users are reminded to view the [Data Use Agreement](#) to ensure compliance with our data use policies. For additional data access questions, view our [Data Distribution Policy](#), or contact our Data Manager, Marie Pitts, at [mlpitts@wm.edu](mailto:mlpitts@wm.edu) or 757-221-7503.

Report generated by [The Center for Conservation Biology Mapping Portal](#).

To learn more about CCB visit [ccbbirds.org](http://ccbbirds.org) or contact us at [info@ccbbirds.org](mailto:info@ccbbirds.org)



# CCB Mapping Portal



**Layers:** VA Eagle Nest Locator, VA Eagle Nest Buffers, Eagle Roosts, Eagle Roost Buffers

**Map Center [longitude, latitude]:** [-77.51815795898438, 37.99521572699314]

**Map Link:**

[https://ccbbirds.org/maps/#layer=VA+Eagle+Nest+Locator&layer=VA+Eagle+Nest+Buffers&layer=Eagle+Roosts&layer=Eagle+Roost+Buffers&zoom=12&lat=37.99521572699314&lng=-77.51815795898438&legend=legend\\_tab\\_59557df6-c07b-11e5-a485-0e31c9be1b51&base=World+Imagery+%28ESRI%29](https://ccbbirds.org/maps/#layer=VA+Eagle+Nest+Locator&layer=VA+Eagle+Nest+Buffers&layer=Eagle+Roosts&layer=Eagle+Roost+Buffers&zoom=12&lat=37.99521572699314&lng=-77.51815795898438&legend=legend_tab_59557df6-c07b-11e5-a485-0e31c9be1b51&base=World+Imagery+%28ESRI%29)

**Report Generated On:** 01/15/2021

The Center for Conservation Biology (CCB) provides certain data online as a free service to the public and the regulatory sector. CCB encourages the use of its data sets in wildlife conservation and management applications. These data are protected by intellectual property laws. All users are reminded to view the [Data Use Agreement](#) to ensure compliance with our data use policies. For additional data access questions, view our [Data Distribution Policy](#), or contact our Data Manager, Marie Pitts, at [mlpitts@wm.edu](mailto:mlpitts@wm.edu) or 757-221-7503.

Report generated by [The Center for Conservation Biology Mapping Portal](#).

To learn more about CCB visit [ccbbirds.org](http://ccbbirds.org) or contact us at [info@ccbbirds.org](mailto:info@ccbbirds.org)

---

# ATTACHMENT

DWR - VAFWIS

---

**VaFWIS - Department of Game and Inland Fisheries**

37.87245 -77.51814  
is the Search Point

Submit Cancel

**Search Point**

- Change to "clicked" map point
- Fixed at 37.87245 -77.51814

**Show Position Rings**

- Yes  No

4 miles and 1 mile at the Search Point

**Show Search Area**

- Yes  No

2 Search distance miles buffer

Search Point is at map center

**Base Map Choices**

Topography

**Map Overlay Choices**

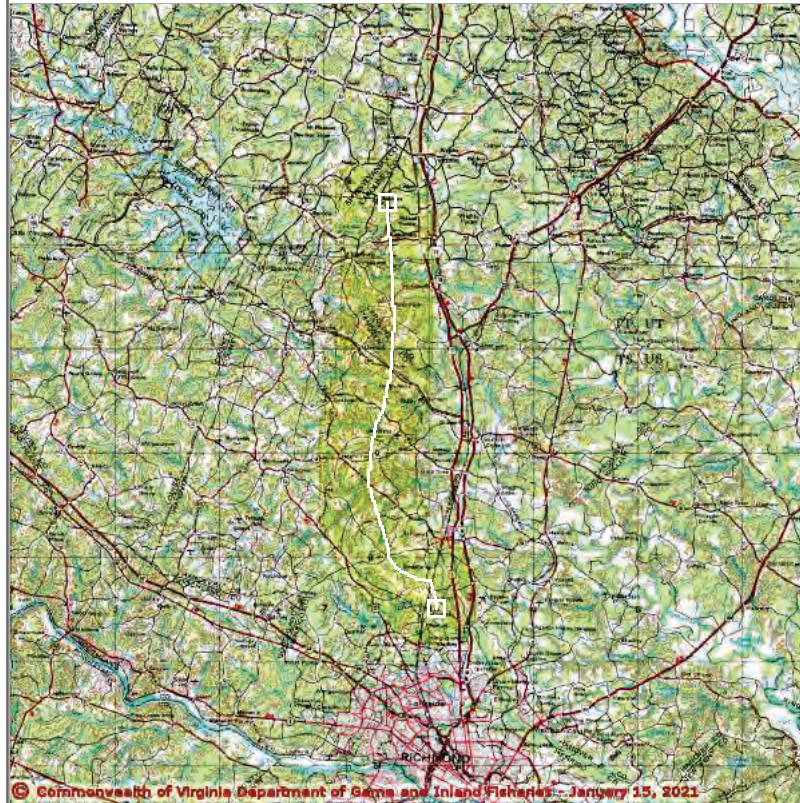
Current List: Search

**Map Overlay Legend**

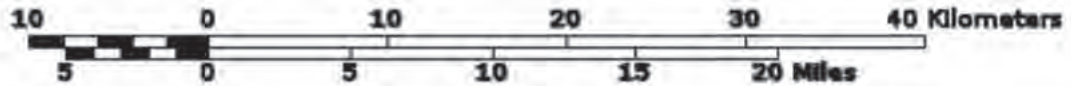
 2 mile radius Search Area

[Refresh Browser Page](#)

Map Click Pan G M    Map Scale In Zoom    Screen Size Small Size Big    [Help](#)



© Commonwealth of Virginia Department of Game and Inland Fisheries - January 15, 2021



Point of Search 37.87245 -77.51814

Map Location 37.87245 -77.51814

- Select **Coordinate System**:
- Degrees, Minutes, Seconds Latitude - Longitude
  - Decimal Degrees Latitude - Longitude
  - Meters UTM NAD83 East North Zone
  - Meters UTM NAD27 East North Zone

Base Map source: USGS 1:250,000 topographic maps (see [Microsoft terra-server-usa.com](http://Microsoft.terra-server-usa.com) for details)

Map projection is UTM Zone 18 NAD 1983 with left 240115 and top 4233053. Pixel size is 74. . Coordinates displayed are decimal Degrees North and West. Map is currently displayed as 600 columns by 600 rows for a total of 360000 pixels. The map display represents 76800 meters east to west by 76800 meters north to south for a total of 5898.2 square kilometers. The map display represents 252011 feet east to west by 252011 feet north to south for a total of 2278.0 square miles.

Topographic maps and Black and white aerial photography for year 1990+- are from the United States Department of the Interior, United States Geological Survey. Color aerial photography aquired 2002 is from Virginia Base Mapping Program, Virginia Geographic Information Network.

Shaded topographic maps are from TOPO! ©2006 National Geographic <http://www.national.geographic.com/topo>

All other map products are from the Commonwealth of Virginia Department of Game and Inland Fisheries.

map assembled 2021-01-15 10:06:29 (qa/qc March 21, 2016 12:20 - tn=1072526 dist=3218 I )  
\$poi=37.8216000 -77.5292000

**VaFWIS Search Report** Compiled on 1/15/2021, 10:08:32 AM[Help](#)

Known or likely to occur within a **2 mile buffer around line beginning 37.8216000 -77.5291999**  
in **033 Caroline County, 085 Hanover County, 087 Henrico County, 177 Spotsylvania County, VA**

[View Map of  
Site Location](#)

593 Known or Likely Species ordered by Status Concern for Conservation  
(displaying first 30) (30 species with Status\* or Tier I\*\* or Tier II\*\* )

<a href="#">BOVA Code</a>	<a href="#">Status*</a>	<a href="#">Tier**</a>	<a href="#">Common Name</a>	<a href="#">Scientific Name</a>	<a href="#">Confirmed</a>	<a href="#">Database(s)</a>
040228	FESE	Ia	<a href="#">Woodpecker, red-cockaded</a>	Picoides borealis		BOVA
050023	FESE	Ia	<a href="#">Bat, Indiana</a>	Myotis sodalis		BOVA
060017	FESE	Ia	<a href="#">Spinymussel, James</a>	Parvaspina collina		BOVA
060003	FESE	Ia	<a href="#">Wedgemussel, dwarf</a>	Alasmidonta heterodon	<a href="#">Yes</a>	BOVA,TEWaters,Habitat,SppObs,HU6
010032	FESE	Ib	<a href="#">Sturgeon, Atlantic</a>	Acipenser oxyrinchus		BOVA
050022	FTST	Ia	<a href="#">Bat, northern long-eared</a>	Myotis septentrionalis		BOVA
060029	FTST	IIa	<a href="#">Lance, yellow</a>	Elliptio lanceolata	<a href="#">Yes</a>	BOVA,SppObs,HU6
050020	SE	Ia	<a href="#">Bat, little brown</a>	Myotis lucifugus		BOVA
050034	SE	Ia	<a href="#">Bat, Rafinesque's eastern big-eared</a>	Corynorhinus rafinesquii macrotis		BOVA,HU6
050027	SE	Ia	<a href="#">Bat, tri-colored</a>	Perimyotis subflavus		BOVA
040293	ST	Ia	<a href="#">Shrike, loggerhead</a>	Lanius ludovicianus		BOVA
040385	ST	Ia	<a href="#">Sparrow, Bachman's</a>	Peucaea aestivalis		BOVA
060173	FPST	Ia	<a href="#">Pigtoe, Atlantic</a>	Fusconaia masoni		BOVA
060081	ST	IIa	<a href="#">Floater, green</a>	Lasmigona subviridis		BOVA
040292	ST		<a href="#">Shrike, migrant loggerhead</a>	Lanius ludovicianus migrans		BOVA
030063	CC	IIIa	<a href="#">Turtle, spotted</a>	Clemmys guttata		BOVA,HU6

010077	Ia	<a href="#">Shiner, bridle</a>	Notropis bifrenatus		BOVA
040092	Ia	<a href="#">Eagle, golden</a>	Aquila chrysaetos		BOVA,HU6
100248	Ia	<a href="#">Fritillary, regal</a>	Speyeria idalia idalia		BOVA,HU6
060084	Ib	<a href="#">Pigtoe, Virginia</a>	Lexingtonia subplana		BOVA
040052	IIa	<a href="#">Duck, American black</a>	Anas rubripes		BOVA,HU6
040029	IIa	<a href="#">Heron, little blue</a>	Egretta caerulea caerulea	<a href="#">Yes</a>	BOVA,BBA,SppObs
040036	IIa	<a href="#">Night-heron, yellow-crowned</a>	Nyctanassa violacea violacea		BOVA
040181	IIa	<a href="#">Tern, common</a>	Sterna hirundo		BOVA,HU6
040320	IIa	<a href="#">Warbler, cerulean</a>	Setophaga cerulea		BOVA,HU6
040140	IIa	<a href="#">Woodcock, American</a>	Scolopax minor		BOVA,HU6
060071	IIa	<a href="#">Lampmussel, yellow</a>	Lampsilis cariosa		BOVA,HU6
040203	IIb	<a href="#">Cuckoo, black-billed</a>	Coccyzus erythrophthalmus		BOVA
040105	IIb	<a href="#">Rail, king</a>	Rallus elegans		BOVA
060175	IIb	<a href="#">Slabshell, Roanoke</a>	Elliptio roanokensis		BOVA

To view **All 593 species** [View 593](#)

\*FE=Federal Endangered; FT=Federal Threatened; SE=State Endangered; ST=State Threatened; FP=Federal Proposed; FC=Federal Candidate; CC=Collection Concern

\*\*I=VA Wildlife Action Plan - Tier I - Critical Conservation Need; II=VA Wildlife Action Plan - Tier II - Very High Conservation Need; III=VA Wildlife Action Plan - Tier III - High Conservation Need; IV=VA Wildlife Action Plan - Tier IV - Moderate Conservation Need  
Virginia Wildlife Action Plan Conservation Opportunity Ranking:  
a - On the ground management strategies/actions exist and can be feasibly implemented.;  
b - On the ground actions or research needs have been identified but cannot feasibly be implemented at this time.;  
c - No on the ground actions or research needs have been identified or all identified conservation opportunities have been exhausted.

[View Map of All Query Results from All Observation Tables](#)

Bat Colonies or Hibernacula: **Not Known**

**Anadromous Fish Use Streams** (1 records)[View Map of All  
Anadromous Fish Use Streams](#)

Stream ID	Stream Name	Reach Status	Anadromous Fish Species			View Map
			Different Species	Highest TE *	Highest Tier **	
C39	<a href="#">Little river</a>	Confirmed	1			<a href="#">Yes</a>

**Impediments to Fish Passage** (14 records)[View Map of All  
Fish Impediments](#)

ID	Name	River	View Map
1300	<a href="#">ASHLAND WATER SUPPLY DAM</a>	SOUTH ANNA RIVER	<a href="#">Yes</a>
533	<a href="#">CAMPBELL DAM</a>	BEAVER CREEK	<a href="#">Yes</a>
378	<a href="#">CHICKAHOMINY MILL DAM</a>	CHICKAHOMINY RIVER	<a href="#">Yes</a>
538	<a href="#">LAKE CLAYBANK DAM</a>	TR-SOUTH ANNA	<a href="#">Yes</a>
564	<a href="#">LAKE DEVOLIA DAM</a>	TR-SOUTH RIVER	<a href="#">Yes</a>
566	<a href="#">LAKE DOVER DAM</a>	TR-STEVENS MILL CREEK	<a href="#">Yes</a>
565	<a href="#">LAKE HERITAGE DAM</a>	TR-STEVENS MILL CREEK	<a href="#">Yes</a>
548	<a href="#">LAKE LANDOR DAM</a>	TR-SOUTH RIVER	<a href="#">Yes</a>
384	<a href="#">MILES DAM</a>	TR-CHICKAHOMINY RIVER	<a href="#">Yes</a>
850	<a href="#">POLLARDS DAM</a>	TR-SOUTH ANNA RIVER	<a href="#">Yes</a>
583	<a href="#">STANLEY DAM</a>	TR-SOUTH ANNA RIVER	<a href="#">Yes</a>
374	<a href="#">SWAMP CREEK DAM</a>	GRASSY SWAMP CREEK	<a href="#">Yes</a>
549	<a href="#">TEMPLES MILL DAM</a>	SOUTH RIVER	<a href="#">Yes</a>
674	<a href="#">USRY PROPERTY INC. DAM</a>	TR-N ANNA RIVER	<a href="#">Yes</a>

**Colonial Water Bird Survey**

N/A

**Threatened and Endangered Waters** (19 Reaches)[View Map of All  
Threatened and Endangered Waters](#)

Stream Name	Highest TE *	T&E Waters Species					View Map
		BOVA Code, Status *, Tier **, Common & Scientific Name					
<a href="#">South Anna River (0104006.)</a>	FESE	060003	FESE	Ia	<a href="#">Wedgemussel, dwarf</a>	Alasmidonta heterodon	<a href="#">Yes</a>
<a href="#">South Anna River (0105218.)</a>	FESE	060003	FESE	Ia	<a href="#">Wedgemussel, dwarf</a>	Alasmidonta heterodon	<a href="#">Yes</a>
<a href="#">South Anna River (0109085.)</a>	FESE	060003	FESE	Ia	<a href="#">Wedgemussel, dwarf</a>	Alasmidonta heterodon	<a href="#">Yes</a>
<a href="#">South Anna River (0109086.)</a>	FESE	060003	FESE	Ia	<a href="#">Wedgemussel, dwarf</a>	Alasmidonta heterodon	<a href="#">Yes</a>

<a href="#">South Anna River (0114149.)</a>	FESE	060003	FESE	Ia	<a href="#">Wedgemussel, dwarf</a>	Alasmidonta heterodon	<a href="#">Yes</a>
<a href="#">South Anna River (0114727.)</a>	FESE	060003	FESE	Ia	<a href="#">Wedgemussel, dwarf</a>	Alasmidonta heterodon	<a href="#">Yes</a>
<a href="#">South Anna River (0114876.)</a>	FESE	060003	FESE	Ia	<a href="#">Wedgemussel, dwarf</a>	Alasmidonta heterodon	<a href="#">Yes</a>
<a href="#">South Anna River (0115188.)</a>	FESE	060003	FESE	Ia	<a href="#">Wedgemussel, dwarf</a>	Alasmidonta heterodon	<a href="#">Yes</a>
<a href="#">South Anna River (0116044.)</a>	FESE	060003	FESE	Ia	<a href="#">Wedgemussel, dwarf</a>	Alasmidonta heterodon	<a href="#">Yes</a>
<a href="#">South Anna River (0117073.)</a>	FESE	060003	FESE	Ia	<a href="#">Wedgemussel, dwarf</a>	Alasmidonta heterodon	<a href="#">Yes</a>
<a href="#">South Anna River (0127399.)</a>	FESE	060003	FESE	Ia	<a href="#">Wedgemussel, dwarf</a>	Alasmidonta heterodon	<a href="#">Yes</a>
<a href="#">South Anna River (0127505.)</a>	FESE	060003	FESE	Ia	<a href="#">Wedgemussel, dwarf</a>	Alasmidonta heterodon	<a href="#">Yes</a>
<a href="#">South Anna River (0128556.)</a>	FESE	060003	FESE	Ia	<a href="#">Wedgemussel, dwarf</a>	Alasmidonta heterodon	<a href="#">Yes</a>
<a href="#">South Anna River (0129351.)</a>	FESE	060003	FESE	Ia	<a href="#">Wedgemussel, dwarf</a>	Alasmidonta heterodon	<a href="#">Yes</a>
<a href="#">South Anna River (0131824.)</a>	FESE	060003	FESE	Ia	<a href="#">Wedgemussel, dwarf</a>	Alasmidonta heterodon	<a href="#">Yes</a>
<a href="#">South Anna River (0131962.)</a>	FESE	060003	FESE	Ia	<a href="#">Wedgemussel, dwarf</a>	Alasmidonta heterodon	<a href="#">Yes</a>
<a href="#">South Anna River (0132011.)</a>	FESE	060003	FESE	Ia	<a href="#">Wedgemussel, dwarf</a>	Alasmidonta heterodon	<a href="#">Yes</a>
<a href="#">South Anna River (0132381.)</a>	FESE	060003	FESE	Ia	<a href="#">Wedgemussel, dwarf</a>	Alasmidonta heterodon	<a href="#">Yes</a>
<a href="#">South Anna River (0138407.)</a>	FESE	060003	FESE	Ia	<a href="#">Wedgemussel, dwarf</a>	Alasmidonta heterodon	<a href="#">Yes</a>

**Managed Trout Streams**

N/A

**Bald Eagle Concentration Areas and Roosts**

N/A

**Bald Eagle Nests**

N/A

**Species Observations** ( 315 records - displaying first 20 , 4  
Observations with Threatened or  
Endangered species )

[View Map of All Query Results](#)  
[Species Observations](#)

obsID	class	Date Observed	Observer	N Species			View Map
				Different Species	Highest TE*	Highest Tier**	
<a href="#">3049</a>	SppObs	Jan 1 1900	M. B. Riddick, 1973	1	FESE	I	<a href="#">Yes</a>
<a href="#">8088</a>	SppObs	Jun 6 1994	RICHARD NEVES, C. GATENBY, M. LATHAM, D. NEVES	2	FTST	II	<a href="#">Yes</a>
<a href="#">8699</a>	SppObs	Jun 6 1994	C. GATENBY, VPI& SU, R. NEVES, D. NEVES	2	FTST	II	<a href="#">Yes</a>
<a href="#">54859</a>	SppObs	Jan 1 1900	DR. RICHARD J. NEVES, FISHERIES AND WILDLIFE SCIENCES, VA TECH	5	FTST	II	<a href="#">Yes</a>
<a href="#">4965</a>	SppObs	Jan 1 1900	B. Moores	1		II	<a href="#">Yes</a>
<a href="#">625049</a>	SppObs	Oct 25 2016	Jason; Hill  Drew; Miller	27		III	<a href="#">Yes</a>
<a href="#">624523</a>	SppObs	Oct 21 2014	PAUL; VIDONIC	12		III	<a href="#">Yes</a>
<a href="#">624632</a>	SppObs	Oct 2 2014	PAUL; VIDONIC	5		III	<a href="#">Yes</a>
<a href="#">624658</a>	SppObs	Jul 21 2014	PAUL; VIDONIC	15		III	<a href="#">Yes</a>
<a href="#">620184</a>	SppObs	Sep 9 2013	Paul; Vidonic	13		III	<a href="#">Yes</a>
<a href="#">621535</a>	SppObs	Jul 31 2013	Paul; Vidonic	16		III	<a href="#">Yes</a>
<a href="#">620843</a>	SppObs	Jun 5 2013	Paul; Vidonic	12		III	<a href="#">Yes</a>
<a href="#">616690</a>	SppObs	Sep 21 2012	PMV	6		III	<a href="#">Yes</a>
<a href="#">616691</a>	SppObs	Sep 21 2012	PMV	18		III	<a href="#">Yes</a>
<a href="#">616666</a>	SppObs	Jul 12 2012	PMV	8		III	<a href="#">Yes</a>
<a href="#">616667</a>	SppObs	Jul 12 2012	PMV	13		III	<a href="#">Yes</a>
<a href="#">613447</a>	SppObs	Sep 19 2011	PMV	13		III	<a href="#">Yes</a>
<a href="#">613424</a>	SppObs	Jul 18	PMV	15		III	<a href="#">Yes</a>

		2011				
<a href="#">604024</a>	SppObs	Sep 4 2008	R. S. Andrews	11		III <a href="#">Yes</a>
<a href="#">601226</a>	SppObs	Jul 17 2008	R. S. Andrews	11		III <a href="#">Yes</a>

Displayed 20 Species Observations

Selected 315 Observations [View all 315 Species Observations](#)

**Habitat Predicted for Aquatic WAP Tier I & II Species** ( 1 Reach )

[View Map Combined Reaches from Below of Habitat Predicted for WAP Tier I & II Aquatic Species](#)

Stream Name	Tier Species						View Map
	Highest TE *	BOVA Code, Status *, Tier **, Common & Scientific Name					
South Anna River (20801061)	FESE	060003	FESE	Ia	<a href="#">Wedgemussel, dwarf</a>	Alasmidonta heterodon	<a href="#">Yes</a>
South Anna River (20801061)	FESE	060003	FESE	Ia	<a href="#">Wedgemussel, dwarf</a>	Alasmidonta heterodon	<a href="#">Yes</a>

**Habitat Predicted for Terrestrial WAP Tier I & II Species**

N/A

**Virginia Breeding Bird Atlas Blocks** ( 4 records )

[View Map of All Query Results](#)  
[Virginia Breeding Bird Atlas Blocks](#)

BBA ID	Atlas Quadrangle Block Name	Breeding Bird Atlas Species			View Map
		Different Species	Highest TE *	Highest Tier **	
50116	<a href="#">Hanover Academy, SE</a>	72		II	<a href="#">Yes</a>
50126	<a href="#">Hewlett, SE</a>	55		III	<a href="#">Yes</a>
50136	<a href="#">Ladysmith, SE</a>	60		III	<a href="#">Yes</a>
50135	<a href="#">Ladysmith, SW</a>	8		III	<a href="#">Yes</a>

**Public Holdings:**

N/A

**Summary of BOVA Species Associated with Cities and Counties of the Commonwealth of Virginia:**

FIPS Code	City and County Name	Different Species	Highest TE	Highest Tier
033	<a href="#">Caroline</a>	374	FTSE	I
085	<a href="#">Hanover</a>	384	FTSE	I
087	<a href="#">Henrico</a>	389	FESE	I

177	<a href="#">Spotsylvania</a>	379	FTSE	I
-----	------------------------------	-----	------	---

**USGS 7.5' Quadrangles:**

Glen Allen  
Hanover Academy  
Hewlett  
Ladysmith  
Yellow Tavern  
Ashland

**USGS NRCS Watersheds in Virginia:**

N/A

**USGS National 6th Order Watersheds Summary of Wildlife Action Plan Tier I, II, III, and IV Species:**

HU6 Code	USGS 6th Order Hydrologic Unit	Different Species	Highest TE	Highest Tier
JL16	<a href="#">Chickahominy River-Grassy Swamp Creek</a>	60	SE	I
JL17	<a href="#">Chickahominy River-Stony Run</a>	66	SE	I
JL18	<a href="#">Upham Brook</a>	54	SS	II
YO10	<a href="#">Newfound River</a>	58	SE	I
YO11	<a href="#">South Anna River-Cedar Creek</a>	58	FESE	I
YO23	<a href="#">North Anna River-Hawkins Creek</a>	59	SE	I
YO25	<a href="#">Lower Little River</a>	59	SE	I
YO26	<a href="#">North Anna River-Long Creek</a>	58	SE	I
YO46	<a href="#">South River</a>	56	FTST	I
YO48	<a href="#">Polecat Creek</a>	53	FTST	II

Compiled on 1/15/2021, 10:08:32 AM 11072526.0 report=all searchType=L dist= 3218 poi= 37.8216000 -77.5291999 siteDD= 38.0466730 -77.5501989;38.0363370 -77.5499659;37.9985250 -77.5445949;37.9444600 -77.5390499;37.8948250 -77.5427599;37.8854460 -77.5457689;37.8720880 -77.5473519;37.8540300 -77.5569879;37.8289010 -77.5618769;37.8017500 -77.5623699;37.7727200 -77.5502419;37.7594500 -77.5427379;37.7476240 -77.5390069;37.7401830 -77.5377079;37.7314510 -77.5296389;37.7225590 -77.5077229;37.7214130 -77.4923069;37.7187510 -77.4908049;37.7016580 -77.4845639;37.6982070 -77.4848739;

PixelSize=64; Anadromous=0.089148; BBA=0.239443; BECAR=0.054126; Bats=0.054663; Buffer=1.346199; County=0.190668; HU6=0.328649; Impediments=0.062743; Init=1.452698; PublicLands=0.115221; Quad=0.189168; SppObs=0.954776; TEWaters=0.105982; TierReaches=0.136898; TierTerrestrial=0.263468; Total=4.804827; Tracking\_BOVA=0.221211; Trout=0.105029; huva=0.228567

**VaFWIS - Department of Game and Inland Fisheries**

37.87245 -77.51814  
is the Search Point

Submit Cancel

**Search Point**

- Change to "clicked" map point
- Fixed at 37.87245 -77.51814

**Show Position Rings**

- Yes  No

4 miles and 1 mile at the Search Point

**Show Search Area**

- Yes  No

2 Search distance miles buffer

Search Point is at map center

**Base Map Choices**

Topography

**Map Overlay Choices**

Current List: Anadromous, Search

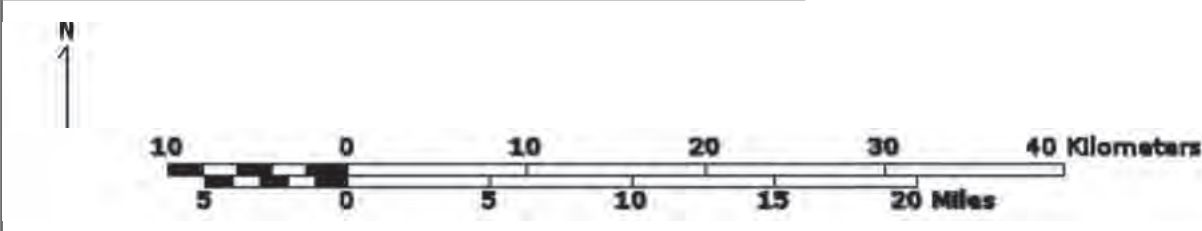
**Map Overlay Legend**

**Anadromous Fish Reach**

- Confirmed
- Potential
- Impediment
- 2 mile radius Search Area

back Refresh Browser Page

Map Click Pan Zoom Map Scale In Screen Size Small Size Big Help



Point of Search 37.87245 -77.51814  
Map Location 37.87245 -77.51814

- Select **Coordinate System**:
- Degrees,Minutes,Seconds Latitude - Longitude
  - Decimal Degrees Latitude - Longitude
  - Meters UTM NAD83 East North Zone
  - Meters UTM NAD27 East North Zone

Base Map source: USGS 1:250,000 topographic maps (see [Microsoft terraserver-usa.com](http://Microsoft.terraserver-usa.com) for details)

Map projection is UTM Zone 18 NAD 1983 with left 240115 and top 4233053. Pixel size is 74. . Coordinates displayed are decimal Degrees North and West. Map is currently displayed as 600 columns by 600 rows for a total of 360000 pixels. The map display represents 76800 meters east to west by 76800 meters north to south for a total of 5898.2 square kilometers. The map display represents 252011 feet east to west by 252011 feet north to south for a total of 2278.0 square miles.

Topographic maps and Black and white aerial photography for year 1990+- are from the United States Department of the Interior, United States Geological Survey. Color aerial photography aquired 2002 is from Virginia Base Mapping Program, Virginia Geographic Information Network. Shaded topographic maps are from TOPO! ©2006 National Geographic <http://www.national.geographic.com/topo> All other map products are from the Commonwealth of Virginia Department of Game and Inland Fisheries.

map assembled 2021-01-15 10:06:29 (qa/qc March 21, 2016 12:20 - tn=1072526 dist=3218 I ) \$poi=37.8216000 -77.5292000

**1 Species Observations where Wedgemussel, dwarf (060003) observed**

37,49,17.7 -77,31,45.1 is the Search Point

**Show Position Rings**

Yes  No

4 miles and 1 mile at the Search Point

**Show Search Area**

Yes  No

2 Search distance miles buffer

Display Search Point is not at center at map center

**Base Map Choices**

Topography ▼

**Map Overlay Choices**

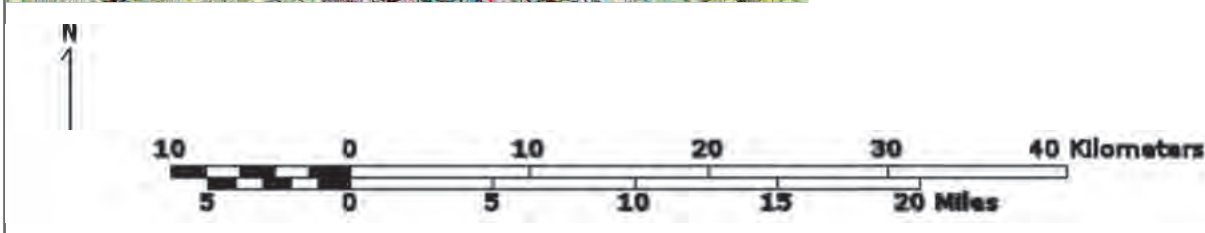
Current List: Position, Search, SppObs

**Map Overlay Legend**

-  **Position Rings**  
4 miles and 1 mile at the Search Point
-  **2 mile radius Search Area**
-  **Data Observation Site**

[Refresh Browser Page](#)

Map Click Pan G M Map Scale In Zoom Screen Size Small Size Big [Help](#)



Point of Search 37,49,17.7 -77,31,45.1

Map Location 37,52,20.8 -77,31,05.3

- Select **Coordinate System**:
- Degrees,Minutes,Seconds Latitude - Longitude
  - Decimal Degrees Latitude - Longitude
  - Meters UTM NAD83 East North Zone
  - Meters UTM NAD27 East North Zone

Base Map source: USGS 1:250,000 topographic maps (see [Microsoft terra-server-usa.com](http://Microsoft.terra-server-usa.com) for details)

Map projection is UTM Zone 18 NAD 1983 with left 240115 and top 4233053. Pixel size is 74. . Coordinates displayed are Degrees, Minutes, Seconds North and West. Map is currently displayed as 600 columns by 600 rows for a total of 360000 pixels. The map display represents 76800 meters east to west by 76800 meters north to south for a total of 5898.2 square kilometers. The map display represents 252011 feet east to west by 252011 feet north to south for a total of 2278.0 square miles.

Topographic maps and Black and white aerial photography for year 1990+- are from the United States Department of the Interior, United States Geological Survey. Color aerial photography acquired 2002 is from Virginia Base Mapping Program, Virginia Geographic Information Network. Shaded topographic maps are from TOPO! ©2006 National Geographic <http://www.national.geographic.com/topo> All other map products are from the Commonwealth of Virginia Department of Game and Inland Fisheries.

map assembled 2021-01-15 10:09:20 (qa/qc March 21, 2016 12:20 - tn=1072526.1 dist=3218 1) \$poi=37.8216000 -77.5291999

**3 Species Observations where Lance, yellow (060029) observed**

37,49,17.7 -77,31,45.1 is the Search Point

**Show Position Rings**

Yes  No

4 miles and 1 mile at the Search Point

**Show Search Area**

Yes  No

2 Search distance miles buffer

Display Search Point is not at center at map center



**Base Map Choices**

Topography

**Map Overlay Choices**

Current List: Position, Search, SppObs

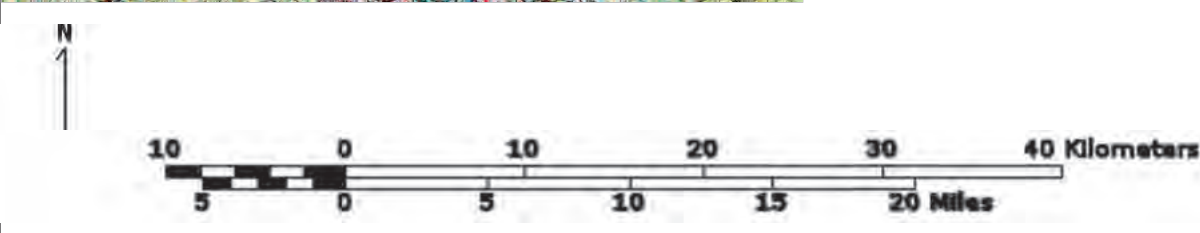
**Map Overlay Legend**

-  **Position Rings**  
4 miles and 1 mile at the Search Point
-  **2 mile radius Search Area**
-  **Data Observation Site**

Map Click **Pan** **Zoom** **Map Scale** **In** **Zoom** **Screen Size** **Small** **Size** **Big** **Help**

[Refresh Browser Page](#)





Point of Search 37,49,17.7 -77,31,45.1  
Map Location 37,52,20.8 -77,31,05.3

- Select **Coordinate System**:  Degrees,Minutes,Seconds Latitude - Longitude  
 Decimal Degrees Latitude - Longitude  
 Meters UTM NAD83 East North Zone  
 Meters UTM NAD27 East North Zone

Base Map source: USGS 1:250,000 topographic maps (see [Microsoft terraserver-usa.com](http://Microsoft.terraserver-usa.com) for details)

Map projection is UTM Zone 18 NAD 1983 with left 240115 and top 4233053. Pixel size is 74. . Coordinates displayed are Degrees, Minutes, Seconds North and West. Map is currently displayed as 600 columns by 600 rows for a total of 360000 pixels. The map display represents 76800 meters east to west by 76800 meters north to south for a total of 5898.2 square kilometers. The map display represents 252011 feet east to west by 252011 feet north to south for a total of 2278.0 square miles.

Topographic maps and Black and white aerial photography for year 1990+- are from the United States Department of the Interior, United States Geological Survey. Color aerial photography aquired 2002 is from Virginia Base Mapping Program, Virginia Geographic Information Network. Shaded topographic maps are from TOPO! ©2006 National Geographic <http://www.national.geographic.com/topo> All other map products are from the Commonwealth of Virginia Department of Game and Inland Fisheries.

map assembled 2021-01-15 10:10:07 (qa/qc March 21, 2016 12:20 - tn=1072526.1 dist=3218 1)  
\$poi=37.8216000 -77.5291999

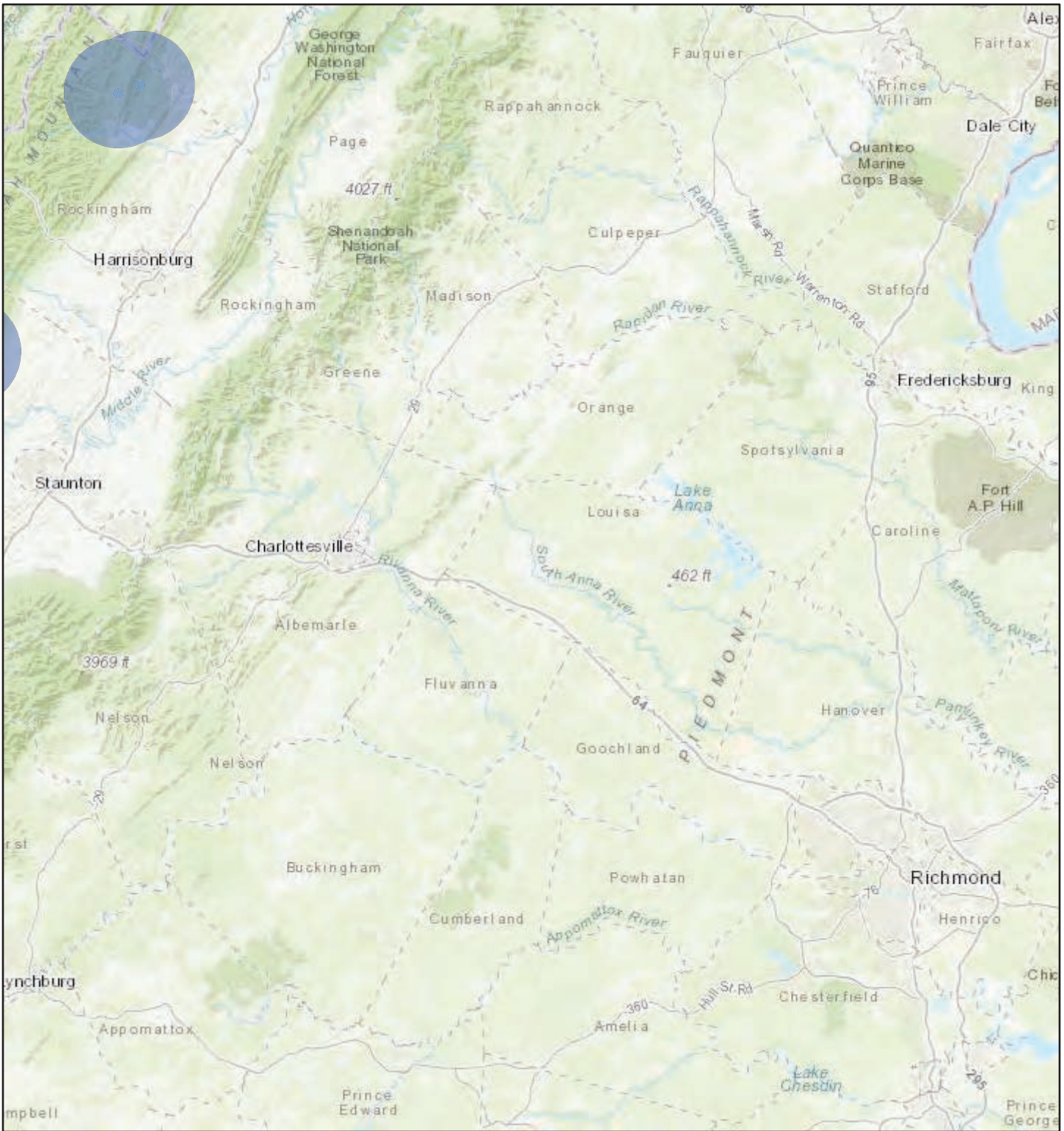
---

# ATTACHMENT


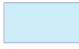
## DWR-NLEB Winter Habitat and Roost Tree Map

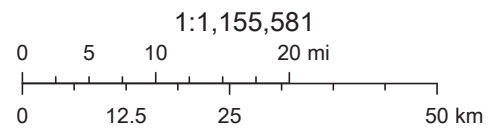
---

# NLEB Locations and Roost Trees



1/15/2021, 10:34:19 AM

-  NLEB Hibernaculum 5.5 Mile Buffer
-  NLEB Hibernaculum Half Mile Buffer



Esri, HERE, Garmin, FAO, USGS, NGA, EPA, NPS

---

# ATTACHMENT

DCR-NHDE

---

## Natural Heritage Resources

### Your Criteria

Federal Legal Status: LE - Listed endangered,LT - Listed threatened

State Legal Status: LE - Listed endangered,LT - Listed threatened

Watershed (8 digit HUC): 02080105 - Mattaponi River,02080106 - Pamunkey River,02080206 - Lower James River

Subwatershed (12 digit HUC): YO46 - South River-Mays Run,YO48 - Polecat Creek,YO10 - Newfound River,YO11 - South Anna River-Cedar Creek,YO25 - (Lower) Little River-Beaverdam Creek,YO26 - North Anna River-Long Creek,JL17 - Chickahominy River-Stony Run

Search Run: 1/15/2021 10:30:38 AM

### Result Summary

Total Species returned: 8

Total Communities returned: 0

Click scientific names below to go to NatureServe report.

Click column headings for an explanation of species and community ranks.

Common Name/Natural Community	Scientific Name	Scientific Name Linked	Global Conservation Status Rank	State Conservation Status Rank	Federal Legal Status	State Legal Status	Statewide Occurrences	Virginia Coastal Zone
<b>Mattaponi</b>								
Polecat Creek								
VASCULAR PLANTS								
Swamp-pink	Helonias bullata	<a href="#">Helonias bullata</a>	G3	S2S3	LT	LE	38	Y
New Jersey Rush	Juncus caesariensis	<a href="#">Juncus caesariensis</a>	G2G3	S2	SOC	LT	13	Y
South River-Mays Run								
VASCULAR PLANTS								
New Jersey Rush	Juncus caesariensis	<a href="#">Juncus caesariensis</a>	G2G3	S2	SOC	LT	13	Y
<b>Pamunkey</b>								
South Anna River-Cedar Creek								
AMPHIBIANS								
Tiger Salamander	Ambystoma tigrinum	<a href="#">Ambystoma tigrinum</a>	G5	S1	None	LE	13	Y
BIVALVIA (MUSSELS)								
Dwarf Wedgemussel	Alasmidonta heterodon	<a href="#">Alasmidonta heterodon</a>	G1G2	S1	LE	LE	15	Y
Yellow Lance	Elliptio lanceolata	<a href="#">Elliptio lanceolata</a>	G2	S2	LT	LT	47	Y
Green Floater	Lasmigona subviridis	<a href="#">Lasmigona subviridis</a>	G3	S2	None	LT	65	Y

Common Name/Natural Community	Scientific Name	Scientific Name Linked	Global Conservation Status Rank	State Conservation Status Rank	Federal Legal Status	State Legal Status	Statewide Occurrences	Virginia Conservation Zone
VASCULAR PLANTS Small Whorled Pogonia	Isotria medeoloides	<a href="#">Isotria medeoloides</a>	G2G3	S2	LT	LE	60	Y

**Note: On-line queries provide basic information from DCR's databases at the time of the request. They are NOT to be substituted for a project review or for on-site surveys required for environmental assessments of specific project areas.**

**For Additional Information** on locations of Natural Heritage Resources please submit an [information request](#).

**To Contribute information** on locations of natural heritage resources, please fill out and submit a [rare species sighting form](#).

## Rachel M Studebaker (Services - 6)

---

**From:** Hypes, Rene' <rene.hypes@dcr.virginia.gov>  
**Sent:** Monday, March 22, 2021 10:41 AM  
**To:** Rachel M Studebaker (Services - 6)  
**Cc:** Meader, Tyler (DCR); Bulluck, Jason  
**Subject:** [EXTERNAL] Re: Elmont to Ladysmith 500 kV Line #574 Rebuild Project

\*\*\*This is an EXTERNAL email that was NOT sent from Dominion Energy. Are you expecting this message? Are you expecting a link or attachment? DO NOT click links or open attachments until you verify them\*\*\*

Ms. Studebaker,

Thank you for your request. In order for us to initiate the review of this project, we need a completed [information services order form](#) along with the attached project map and information. It would also be helpful if you could provide an ArcGIS shapefile of the project area. Please note, our standard review time is 30 calendar days starting upon receipt of the completed information services order form. I am happy to speak to you or your supervisor about our review process.

Please let me know if you have any questions.

Sincerely,

Rene' Hypes

---

On Mon, Mar 22, 2021 at 10:37 AM [Rachel.M.Studebaker@dominionenergy.com](mailto:Rachel.M.Studebaker@dominionenergy.com)  
<[Rachel.M.Studebaker@dominionenergy.com](mailto:Rachel.M.Studebaker@dominionenergy.com)> wrote:

Ms. Hypes,

Please see the attached letter and project map notifying you of the proposed transmission line rebuild project located in Hanover and Caroline Counties, Virginia.

Please contact me with any questions or for additional information.

Thank you,

*Rachel Studebaker*

Environmental Specialist II

Dominion Energy Services

120 Tredegar Street, Richmond, VA 23219

Office: (804) 273-4086

Cell: (804) 217-1847



CONFIDENTIALITY NOTICE: This electronic message contains information which may be legally confidential and or privileged and does not in any case represent a firm ENERGY COMMODITY bid or offer relating thereto which binds the sender without an additional express written confirmation to that effect. The information is intended solely for the individual or entity named above and access by anyone else is unauthorized. If you are not the intended recipient, any disclosure, copying, distribution, or use of the contents of this information is prohibited and may be unlawful. If you have received this electronic transmission in error, please reply immediately to the sender that you have received the message in error, and delete it. Thank you.

--

S. Rene' Hypes

Project Review Coordinator

Department of Conservation and Recreation

Division of Natural Heritage

600 East Main Street, 24<sup>th</sup> Floor

Richmond, Virginia 23219

[804-371-2708](tel:804-371-2708) (phone)

[804-371-2674](tel:804-371-2674) (fax)

[rene.hypes@dcr.virginia.gov](mailto:rene.hypes@dcr.virginia.gov)

**Conserving VA's Biodiversity through Inventory, Protection and Stewardship**

<http://www.dcr.virginia.gov/natural-heritage>

Matthew J. Strickler  
Secretary of Natural Resources

Clyde E. Cristman  
Director



Rochelle Altholz  
Deputy Director of  
Administration and Finance

Russell W. Baxter  
Deputy Director of  
Dam Safety & Floodplain  
Management and Soil & Water  
Conservation

Nathan Burrell  
Deputy Director of  
Government and Community Relations

Thomas L. Smith  
Deputy Director of  
Operations

**COMMONWEALTH of VIRGINIA**  
DEPARTMENT OF CONSERVATION AND RECREATION

March 29, 2021

Grace Flick  
C2 Environmental, Inc.  
11846 Rock Landing Drive, Suite A  
Newport News, VA 23606

Re: Elmont to Ladysmith 500 kV Transmission Line 574 Rebuild

Dear Ms. Flick:

The Department of Conservation and Recreation's Division of Natural Heritage (DCR) has searched its Biotics Data System for occurrences of natural heritage resources from the area outlined on the submitted map. Natural heritage resources are defined as the habitat of rare, threatened, or endangered plant and animal species, unique or exemplary natural communities, and significant geologic formations.

According to the information currently in our files, the South Anna River – Stone Horse Stream Conservation Unit (SCU) is located within the project site. SCUs identify stream reaches that contain aquatic natural heritage resources, including 2 miles upstream and 1 mile downstream of documented occurrences, and all tributaries within this reach. SCUs are also given a biodiversity significance ranking based on the rarity, quality, and number of element occurrences they contain. The South Anna River – Stone Horse SCU has been given a biodiversity ranking of B3, which represents a site of high significance. The natural heritage resources associated with this site are:

<i>Elliptio lanceolata</i>	Yellow lance	G2G3/S2S3/LT/LT
	Aquatic Natural Community (NP-Pamunkey First Order Stream)	G3G4/S3S4/NL/NL

The Yellow lance occurs in mid-sized rivers and second and third order streams. To survive, it needs a silt-free, stable streambed and well-oxygenated water that is free of pollutants. This species has been the subject of taxonomic debate in recent years (NatureServe, 2009). Currently in Virginia, the Yellow lance is recognized from populations in the Chowan, James, York, and Rappahannock drainages. Its range also extends into Neuse-Tar river system in North Carolina. In recent years, significant population declines have been noted across its range (NatureServe, 2009). Please note that this species is currently classified as threatened by the United States Fish and Wildlife Service (USFWS) and the Virginia Department of Wildlife Resources (VDWR).

Considered good indicators of the health of aquatic ecosystems, freshwater mussels are dependent on good water quality, good physical habitat conditions, and an environment that will support populations of host fish species (Williams et al., 1993). Because mussels are sedentary organisms, they are sensitive to water quality degradation related to increased sedimentation and pollution. They are also sensitive to habitat destruction through dam

construction, channelization, and dredging, and the invasion of exotic mollusk species. The Yellow lance may be particularly sensitive to chemical pollutants and exposure to fine sediments from erosion (NatureServe, 2009).

The documented Aquatic Natural Community is based on Virginia Commonwealth University's INSTAR (*Interactive Stream Assessment Resource*) database which includes over 2,000 aquatic (stream and river) collections statewide for fish and macroinvertebrate. These data represent fish and macroinvertebrate assemblages, instream habitat, and stream health assessments. The associated Aquatic Natural Community is significant on multiple levels. First, this stream is a grade B, per the VCU-Center for Environmental Sciences (CES), indicating its relative regional significance, considering its aquatic community composition and the present-day conditions of other streams in the region. This stream reach also holds a "Healthy" stream designation per the INSTAR Virtual Stream Assessment (VSS) score. This score assesses the similarity of this stream to ideal stream conditions of biology and habitat for this region. Lastly, this stream contributes to high Biological Integrity at the watershed level (6<sup>th</sup> order) based on number of native/non-native, pollution-tolerant/intolerant and rare, threatened or endangered fish and macroinvertebrate species present.

Threats to the significant Aquatic Natural Community and the surrounding watershed include water quality degradation related to point and non-point pollution, water withdrawal and introduction of non-native species.

In addition, the South Anna River has been designated by the VDWR as a "Threatened and Endangered Species Water" for the Dwarf wedgemussel.

To minimize adverse impacts to the aquatic ecosystem as a result of the proposed activities, DCR recommends the implementation of and strict adherence to applicable state and local erosion and sediment control/storm water management laws and regulations, establishment/enhancement of riparian buffers with native plant species and maintaining natural stream flow. Due to the legal status of the Yellow lance and the Dwarf wedgemussel, DCR also recommends coordination with the USFWS and the VDWR, Virginia's regulatory authority for the management and protection of this species to ensure compliance with protected species legislation.

DCR recommends the development and implementation of an invasive species plan to be included as part of the maintenance practices for the right-of-way (ROW). The invasive species plan should include an invasive species inventory for the project area based on the current DCR Invasive Species List (<http://www.dcr.virginia.gov/natural-heritage/document/nh-invasive-plant-list-2014.pdf>) and methods for treating the invasives. DCR also recommends the ROW restoration and maintenance practices planned include appropriate revegetation using native species in a mix of grasses and forbs, robust monitoring and an adaptive management plan to provide guidance if initial revegetation efforts are unsuccessful or if invasive species outbreaks occur.

Under a Memorandum of Agreement established between the Virginia Department of Agriculture and Consumer Services (VDACS) and the DCR, DCR represents VDACS in comments regarding potential impacts on state-listed threatened and endangered plant and insect species. The current activity will not affect any documented state-listed plants or insects.

There are no State Natural Area Preserves under DCR's jurisdiction in the project vicinity.

New and updated information is continually added to Biotics. Please re-submit a completed order form and project map for an update on this natural heritage information if the scope of the project changes and/or six months has passed before it is utilized.

A fee of \$625.00 has been assessed for the service of providing this information. Please find attached an invoice for that amount. Please return one copy of the invoice along with your remittance made payable to the Treasurer of Virginia, DCR Finance, 600 East Main Street, 24<sup>th</sup> Floor, Richmond, VA 23219. Payment is due within thirty days of the invoice date. Please note late payment may result in the suspension of project review service for future projects.

The VDWR maintains a database of wildlife locations, including threatened and endangered species, trout streams, and anadromous fish waters that may contain information not documented in this letter. Their database may be accessed from <https://vafwis.dgif.virginia.gov/fwis/> or contact Ernie Aschenbach at 804-367-2733 or [Ernie.Aschenbach@dwr.virginia.gov](mailto:Ernie.Aschenbach@dwr.virginia.gov).

Should you have any questions or concerns, please contact me at 804-225-2429. Thank you for the opportunity to comment on this project.

Sincerely,



Tyler Meader  
Natural Heritage Locality Liaison

CC: Troy Andersen, USFWS  
Amy Ewing, VDWR

#### Literature Cited

NatureServe. 2009. NatureServe Explorer: An online encyclopedia of life [web application]. Version 7.1. NatureServe, Arlington, Virginia. Available <http://www.natureserve.org/explorer>. (Accessed: April 5, 2010).

Williams, J.D., M.L. Warren, Jr., K.S. Cummings, J.L. Harris, and R.J. Neves. 1993. Conservation status of freshwater mussels of the United States and Canada. *Fisheries* 18: 6-9.

## Rachel M Studebaker (Services - 6)

---

**From:** Ewing, Amy <amy.ewing@dwr.virginia.gov>  
**Sent:** Monday, March 22, 2021 12:02 PM  
**To:** Rachel M Studebaker (Services - 6)  
**Subject:** [EXTERNAL] Re: Elmont to Ladysmith 500 kV Line #574 Rebuild Project

**\*\*\*This is an EXTERNAL email that was NOT sent from Dominion Energy. Are you expecting this message? Are you expecting a link or attachment? DO NOT click links or open attachments until you verify them\*\*\***

Thank you for contacting us about your project. Due to staffing limitations, we are unable to review and provide comments on projects that are not currently involved in one of the regulatory review processes for which we are a formal consulting agency (see <https://www.DWR.virginia.gov/environmental-programs/>). If your project becomes involved in one of these review processes, we will review the project at that time and provide our comments to the requesting agency. In advance of that, we recommend that you conduct a preliminary desktop analysis to evaluate your project's potential impacts upon the Commonwealth's wildlife resources by accessing our online information system, the Virginia Fish and Wildlife Information Service (VAFWIS) and using the **Geographic Search** function to generate an **Initial Project Assessment** (IPA) report.

We recommend the following steps:

A. Access VAFWIS at this link: <https://vafwis.DWR.virginia.gov/fwis/>

If you are not already a VAFWIS subscriber, you should request to become one by emailing a request to [VAFWIS\\_support@DWR.virginia.gov](mailto:VAFWIS_support@DWR.virginia.gov). VAFWIS Subscriptions are free of charge. As a subscriber, one is able to generate an IPA for the project area (project site plus a minimum 2-mile buffer) which generates a list of imperiled wildlife and designated wildlife resources known from the project area. You may also access VAFWIS as a visitor, but access to data and mapping at this user level is restricted.

Alternatively, you may contact our Geographic Information Systems (GIS) Coordinator, Jay Kapalczynski, at [Jay.Kapalczynski@DWR.virginia.gov](mailto:Jay.Kapalczynski@DWR.virginia.gov) to request access to the Wildlife Mapping and Environmental Review Map Service (WERMS) which allows you to download GIS data into your own system.

B. Access information about the location of bat hibernacula and roosts from the following locations:

Northern Long-Eared Bats: <https://www.dwr.virginia.gov/wildlife/bats/northern-long-eared-bat-application/>

Little Brown Bats and Tricolored Bats: <https://www.dwr.virginia.gov/wildlife/bats/little-brown-bat-tri-colored-bat-winter-habitat-roosts-application/>

C. Access up to date information about the location and status of bald eagle nests in Virginia by accessing the Center for Conservation Biology's Eagle Nest Locator at <https://ccbbirds.org/what-we-do/research/species-of-concern/virginia-eagles/nest-locator/>

D. Review the DWR information, guidance, and protocols available on our website at the bottom of [this page](#) in the "Additional Resources" section and implement, as appropriate.

E. Include the results of your desktop analysis with your project documents, applications, etc.



**Amy Martin Ewing**

*Environmental Services Biologist  
Manager, Wildlife Information*

she/her/hers

P 804.367.2211

**Department of Wildlife Resources**

*CONSERVE. CONNECT. PROTECT.*

A 7870 Villa Park Drive, P.O. Box 90778, Henrico, VA 23228

[www.VirginiaWildlife.gov](http://www.VirginiaWildlife.gov)

On Mon, Mar 22, 2021 at 10:37 AM [Rachel.M.Studebaker@dominionenergy.com](mailto:Rachel.M.Studebaker@dominionenergy.com)  
<[Rachel.M.Studebaker@dominionenergy.com](mailto:Rachel.M.Studebaker@dominionenergy.com)> wrote:

Ms. Ewing,

Please see the attached letter and project map notifying you of the proposed transmission line rebuild project located in Hanover and Caroline Counties, Virginia.

Please contact me with any questions or for additional information.

Thank you,

*Rachel Studebaker*

Environmental Specialist II

Dominion Energy Services

120 Tredegar Street, Richmond, VA 23219

Office: (804) 273-4086

Cell: (804) 217-1847



CONFIDENTIALITY NOTICE: This electronic message contains information which may be legally confidential and or privileged and does not in any case represent a firm ENERGY COMMODITY bid or offer relating thereto which binds the sender without an additional express written confirmation to that effect. The information is intended solely for the individual or entity named above and access by anyone else is unauthorized. If you are not the intended recipient, any disclosure, copying, distribution, or use of the contents of this information is prohibited and may be unlawful. If you have received this electronic transmission in error, please reply immediately to the sender that you have received the message in error, and delete it. Thank you.

## Rachel M Studebaker (Services - 6)

---

**From:** Case, Rachel L <rachel\_case@fws.gov> on behalf of Virginia Field Office, FW5 <virginiafieldoffice@fws.gov>  
**Sent:** Tuesday, March 23, 2021 10:58 AM  
**To:** Rachel M Studebaker (Services - 6)  
**Subject:** [EXTERNAL] Re: [EXTERNAL] Elmont to Ladysmith 500 kV Line #574 Rebuild Project

\*\*\*This is an EXTERNAL email that was NOT sent from Dominion Energy. Are you expecting this message? Are you expecting a link or attachment? DO NOT click links or open attachments until you verify them\*\*\*

Hi Rachel,

Thank you for notifying our office about this project. If you are seeking Section 7 review for this project, you will need to utilize our online review process. An overview of this process can be found on our website at <https://www.fws.gov/northeast/virginiafield/endangered/projectreviews.html>.

Please let me know if you have any questions.

Thanks,  
Rachel

---

**From:** Andersen, Troy M <troy\_andersen@fws.gov>  
**Sent:** Monday, March 22, 2021 11:19 AM  
**To:** Virginia Field Office, FW5 <virginiafieldoffice@fws.gov>  
**Subject:** FW: [EXTERNAL] Elmont to Ladysmith 500 kV Line #574 Rebuild Project

---

**From:** Rachel.M.Studebaker@dominionenergy.com <Rachel.M.Studebaker@dominionenergy.com>  
**Sent:** Monday, March 22, 2021 10:39 AM  
**To:** Andersen, Troy M <troy\_andersen@fws.gov>  
**Subject:** [EXTERNAL] Elmont to Ladysmith 500 kV Line #574 Rebuild Project

**This email has been received from outside of DOI - Use caution before clicking on links, opening attachments, or responding.**

Mr. Andersen,

Please see the attached letter and project map notifying you of the proposed transmission line rebuild project located in Hanover and Caroline Counties, Virginia.

Please contact me with any questions or for additional information.

Thank you,

*Rachel Studebaker*

Environmental Specialist II  
Dominion Energy Services  
120 Tredegar Street, Richmond, VA 23219  
Office: (804) 273-4086  
Cell: (804) 217-1847



CONFIDENTIALITY NOTICE: This electronic message contains information which may be legally confidential and or privileged and does not in any case represent a firm ENERGY COMMODITY bid or offer relating thereto which binds the sender without an additional express written confirmation to that effect. The information is intended solely for the individual or entity named above and access by anyone else is unauthorized. If you are not the intended recipient, any disclosure, copying, distribution, or use of the contents of this information is prohibited and may be unlawful. If you have received this electronic transmission in error, please reply immediately to the sender that you have received the message in error, and delete it. Thank you.



*Commonwealth of Virginia*

***VIRGINIA DEPARTMENT OF ENVIRONMENTAL QUALITY***

1111 E. Main Street, Suite 1400, Richmond, Virginia 23219

P.O. Box 1105, Richmond, Virginia 23218

(800) 592-5482

[www.deq.virginia.gov](http://www.deq.virginia.gov)

Matthew J. Strickler  
Secretary of Natural Resources

David K. Paylor  
Director  
(804) 698-4000

August 13, 2019

Mr. Jason E. Williams  
Director Environmental Services  
Dominion Energy  
5000 Dominion Boulevard  
Glen Allen, VA 23060

*Transmitted electronically:* [jason.e.william@dominionenergy.com](mailto:jason.e.william@dominionenergy.com)

Subject: Dominion Energy (Electric Transmission) – Annual Standards and Specifications for Erosion & Sediment Control and Stormwater Management (AS&S for ESC and SWM)

Dear Mr. Williams:

The Virginia Department of Environmental Quality ("DEQ") hereby approves the Annual Standards and Specifications for Erosion & Sediment Control and Stormwater Management for Dominion Energy (Electric Transmission) dated "May 29, 2019". This coverage is effective from August 13, 2019 to August 12, 2020.

To ensure compliance with approved specifications, the Virginia Erosion and Sediment Control Law and the Virginia Stormwater Management Act, DEQ staff will conduct random site inspections, respond to complaints, and provide on-site technical assistance with specific erosion and sediment control and stormwater management measures and plan implementation.

Please note that your approved Annual Standards and Specifications include the following requirements:

1. Variance, exception, and deviation requests must be submitted separately from this Annual Standards and Specifications submission to DEQ. DEQ may require project-specific plans associated with variance requests to be submitted for review and approval.
2. The following information must be submitted to DEQ for each project at least two weeks in advance of the commencement of regulated land-disturbing activities. Notifications shall be sent by email to: [StandardsandSpecs@deq.virginia.gov](mailto:StandardsandSpecs@deq.virginia.gov)
  - i: Project name or project number;
  - ii: Project location (including nearest intersection, latitude and longitude, access point);
  - iii: On-site project manager name and contact info;
  - iv: Responsible Land Disturber (RLD) name and contact info;
  - v: Project description;

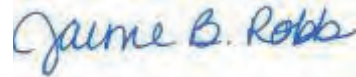
Dominion Energy (Electric Transmission) – AS&S for ESC and SWM  
August 12, 2019  
Page 2 of 2

- vi: Acreage of disturbance for project;
  - vii: Project start and finish date; and
  - viii: Any variances/exceptions/waivers associated with this project.
3. Project tracking of all regulated land disturbing activities (LDA) must be submitted to the DEQ on a bi-annual basis. Project tracking records shall contain the same information as required in the two week e-notifications for each regulated LDA.
  4. Erosion & Sediment Control and Stormwater Management plan review and approval must be conducted by DEQ-Certified plan reviewers and documented in writing.

To ensure an efficient information exchange and response to inquiries, the DEQ Central Office is your primary point of contact. Central Office staff will coordinate with our Regional Office staff as appropriate.

Thank you very much for your submission and continued efforts to conserve and protect Virginia's precious natural resources.

Sincerely,



Jaime B. Robb, Manager  
Office of Stormwater Management

Cc: Amelia Boschen, [Amelia.h.boschen@dominionenergy.com](mailto:Amelia.h.boschen@dominionenergy.com)  
Elizabeth Hester, [Elizabeth.l.hester@dominionenergy.com](mailto:Elizabeth.l.hester@dominionenergy.com)  
Stacey Ellis, [Stacey.t.ellis@dominionenergy.com](mailto:Stacey.t.ellis@dominionenergy.com)

Case Decision Information:

As provided by Rule 2A:2 of the Supreme Court of Virginia, you have thirty days from the date of service (the date you actually received this decision or the date it was mailed to you, whichever occurred first) within which to appeal this decision by filing a notice of appeal in accordance with the Rules of the Supreme Court of Virginia with the Director, Department of Environmental Quality. In the event that this decision is served on you by mail, three days are added to that period.