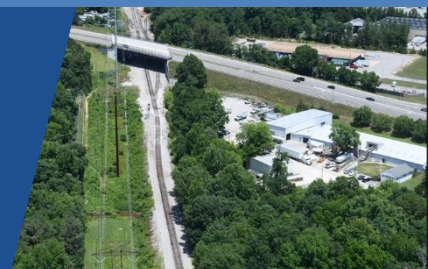


# Basin-Chesterfield 230 kV Electric Transmission Line Rebuild Project

City of Richmond & Chesterfield County  
Virginia



To maintain system reliability and successfully integrate new electric generation, this project proposes to rebuild the existing line between Basin and Chesterfield substations in central Virginia.



## Basin – Chesterfield 230 kV Line: At a Glance

|  |   |
|--|---|
| <b>Number of structures to be replaced</b> | 110   |
| <b>Project length</b>                      | ~12.4 miles   |
| <b>Right of way width</b>                  | Ranges from 10 feet to 300 feet wide (portions of the right of way will require clearing and maintenance)                               |
| <b>Right of way needs</b>                  | Existing right of way will be optimized, but additional easement may be acquired to comply with today's line clearance safety standards |

### Structure Information:

- Current structures:
  - Originally built between 1962 and 1980
  - Various style double-circuit monopoles and towers
- Proposed structures:
  - Double-circuit steel monopoles
  - The co-located existing 230 kV lines will be transferred onto the new structures
  - New monopoles will be taller than existing structures (height increase is pending engineering design)
- Where possible, new poles will be placed in similar locations as the existing structures

### Proposed Structure:



### COMING SOON: Interactive Project Map

- Discover more about the proposed project corridor.
- Search for a specific address to see proximity to the transmission line.
- Compare existing and proposed structures.
- Find this interactive map on the project website.

**website:** [DominionEnergy.com/Basin-Chesterfield](http://DominionEnergy.com/Basin-Chesterfield)

**email:** [powerline@dominionenergy.com](mailto:powerline@dominionenergy.com) **phone:** 888-291-0190

*¿Habla español? Escanee este código QR o visite [DominionEnergy.com/Basin-Chesterfield](http://DominionEnergy.com/Basin-Chesterfield) para solicitar estos documentos en español.*

# Basin-Chesterfield 230 kV Electric Transmission Line Rebuild Project

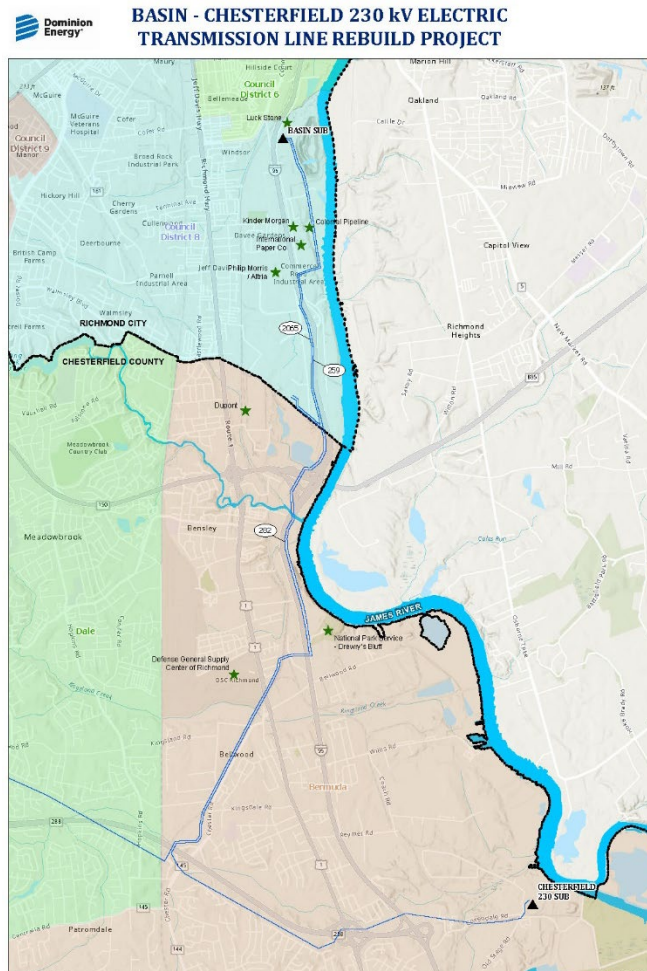
## City of Richmond & Chesterfield County Virginia



### Project Schedule

| Activity  | Timeframe                 |
|---|---------------------------|
| Conduct surveys and review land rights                            | 2026                      |
| Announce project  | Spring 2026               |
| Public meetings and community engagement                          | Fall 2026                 |
| File application with Virginia State Corporation Commission (SCC) | December 2026             |
| SCC issues Final Order (requested)                                | December 2027             |
| Begin clearing right of way and prepare construction access       | January 2028              |
| Construction activities   | Spring 2028 – spring 2029 |

*Schedules are subject to change pending final approvals, permits, weather, and progress.*



**website:** [DominionEnergy.com/Basin-Chesterfield](http://DominionEnergy.com/Basin-Chesterfield)  
**email:** [powerline@dominionenergy.com](mailto:powerline@dominionenergy.com) **phone:** 888-291-0190