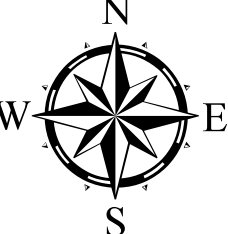



### Figure 1 Environmental Constraints Map Set Blackwell Rd 230 kV Transmission Line and Substation Project Fauquier and Prince William Counties, Virginia Page 1

- Existing Substation
- Proposed Substation or Transition Station
- Option 1, Overhead Route 1
- Option 1, Overhead Route 2
- Option 1, Overhead Route 3
- Option 1, Overhead Route 4
- Option 1, Underground Route 1
- Option 1, Underground Route 2
- Option 1, Underground Route 3
- Option 2, Overhead Route 1
- Option 2, Overhead Route 2
- Option 1, Overhead Route 1 Variation
- Option 1, Overhead Route 3 Variation
- Route Considered But Rejected
- Existing Dominion Transmission Line
- School
- Church
- Cemetery
- Town of Warrenton Municipal Boundary
- Protected Wetland Area
- Park/Recreation Area
- VOF Easement
- Fauquier County Conservation Easement
- Other Conservation Easement
- NHD Waterbody
- Land Ownership
  - Federal Government
  - State Government
  - Fauquier County
  - Local Government

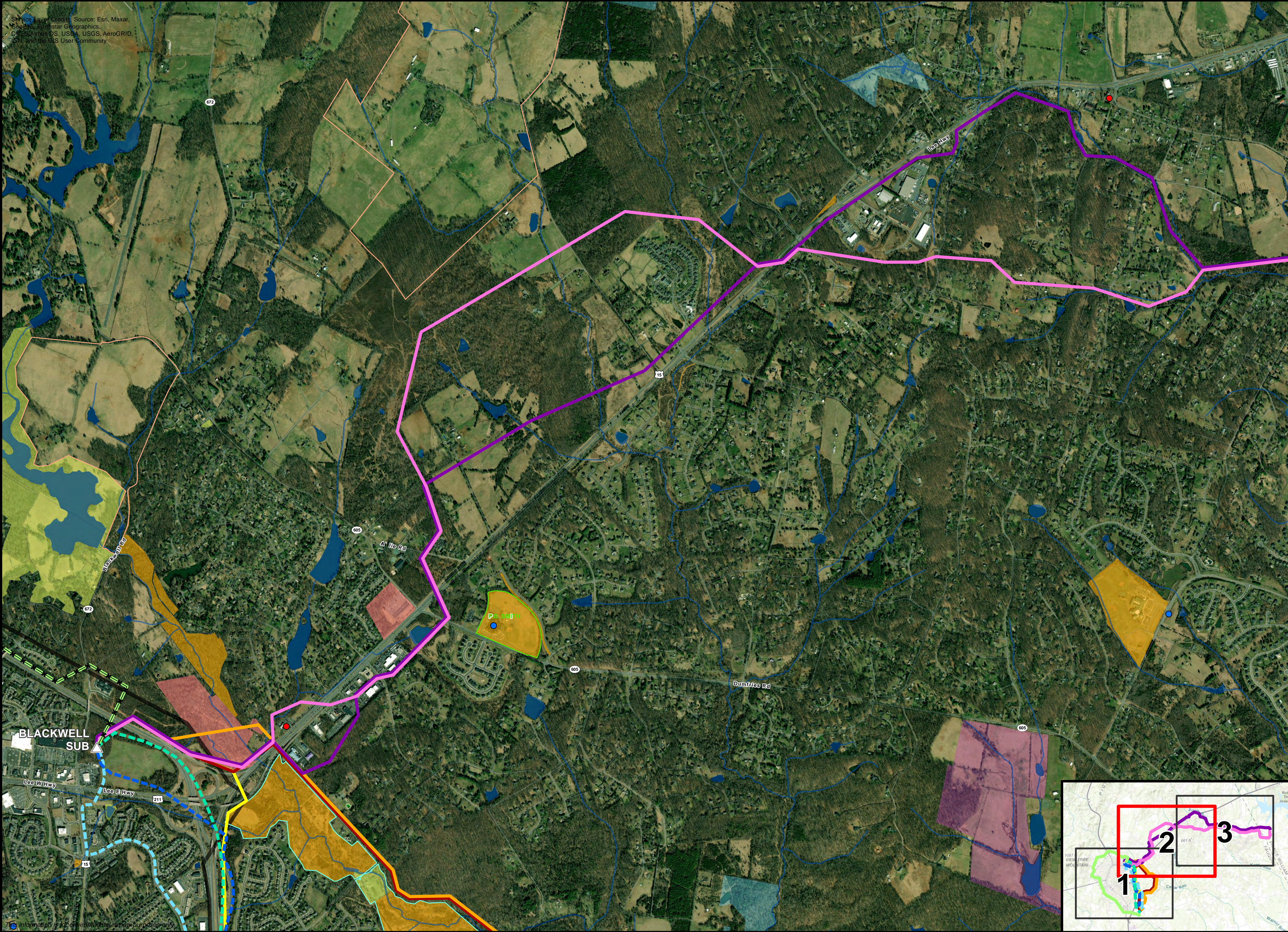


0 900 1,800 2,700  
Feet  
1:10,800



REVISD: 06/08/2022 DRAWN BY: 0238



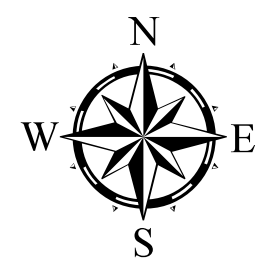


Service Layer Credits: Source: Esri, Maxar, GeoEye, Earthstar Geographics, CNES/Airbus DS, USDA, USGS, AeroGRID, IGN, and the GIS User Community



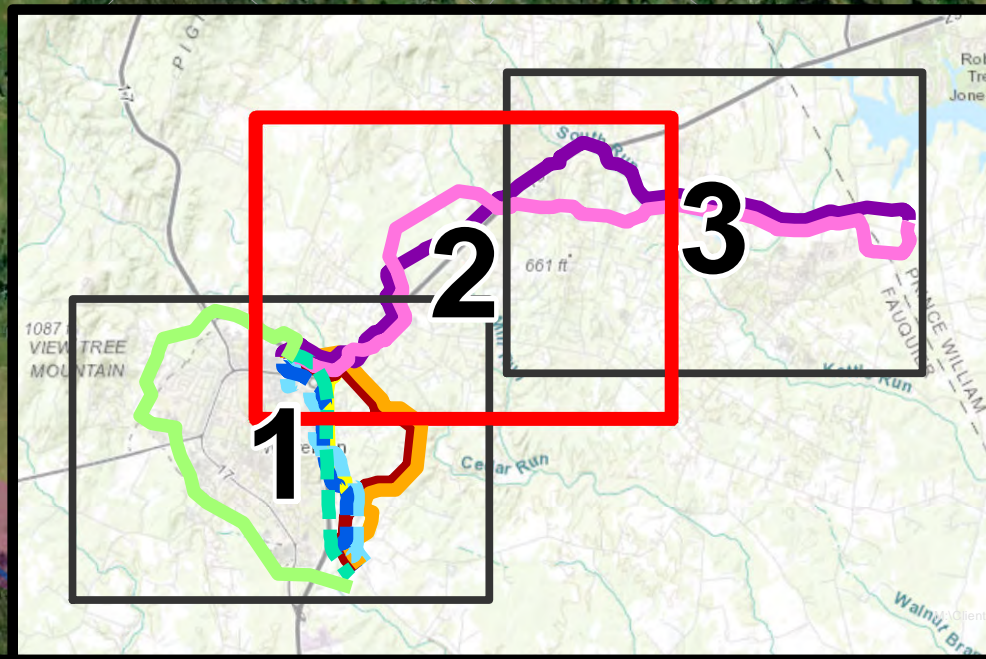
**Figure 1**  
**Environmental**  
**Constraints Map Set**  
**Blackwell Rd 230 kV Transmission**  
**Line and Substation Project**  
**Fauquier and Prince William**  
**Counties, Virginia**  
**Page 2**

- Proposed Substation or Transition Station
- Option 1, Overhead Route 1
- Option 1, Overhead Route 2
- Option 1, Overhead Route 3
- Option 1, Overhead Route 4
- Option 1, Underground Route 1
- Option 1, Underground Route 2
- Option 1, Underground Route 3
- Option 2, Overhead Route 1
- Option 2, Overhead Route 2
- Route Considered But Rejected
- School
- Church
- Town of Warrenton Municipal Boundary
- Protected Wetland Area
- Park/Recreation Area
- VOF Easement
- Fauquier County Conservation Easement
- Other Conservation Easement
- NHD Waterbody
- Land Ownership**
- State Government
- Fauquier County
- Local Government



0 900 1,800 2,700  
Feet

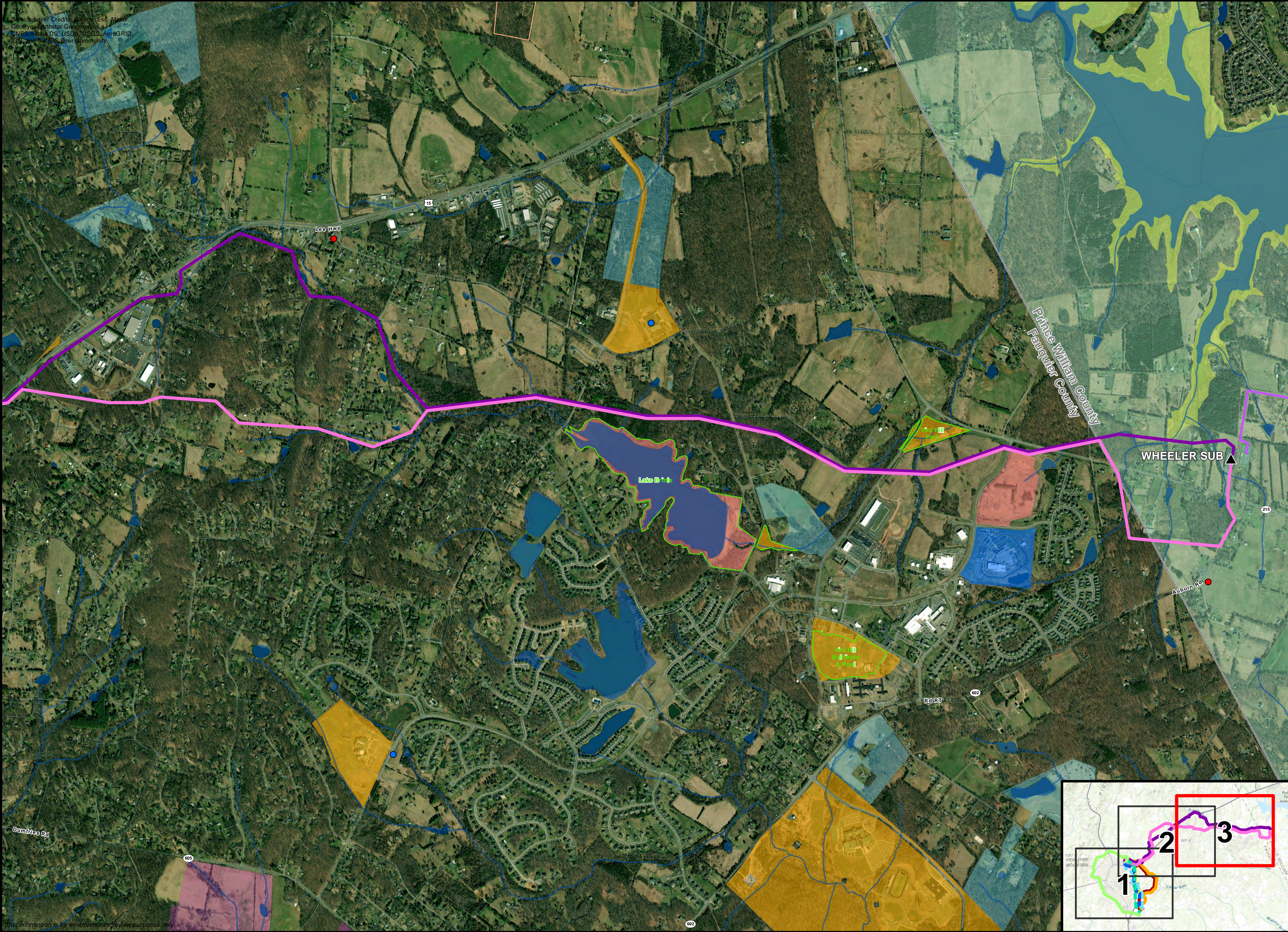
1:10,800



REVISED: 06/08/2022

DRAWN BY: 0238



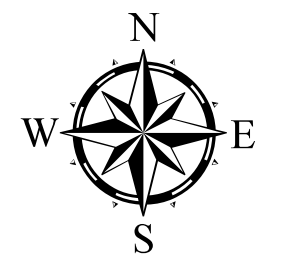


Source: Layer Credits: Source: Esri, Maxar, GeoEye, Earthstar Geographics, CNES/Airbus DS, USDA, USGS, AeroGRID, IGN, and the GIS User Community



**Figure 1**  
**Environmental**  
**Constraints Map Set**  
**Blackwell Rd 230 kV Transmission**  
**Line and Substation Project**  
**Fauquier and Prince William**  
**Counties, Virginia**  
**Page 3**

- ▲ Existing Substation
- Option 2, Overhead Route 1
- Option 2, Overhead Route 2
- Existing Dominion Transmission Line
- School
- Church
- County Boundary
- Park/Recreation Area
- VOF Easement
- Prince William County Rural Area
- Fauquier County Conservation Easement
- Other Conservation Easement
- NHD Waterbody
- Land Ownership**
- Federal Government
- State Government
- Fauquier County
- Local Government



0 900 1,800 2,700  
Feet  
1:10,800

