
WELCOME!

The virtual community meeting will begin shortly.



**Dominion
Energy[®]**

Powering Your Every Day.SM

**Burton – Virginia Beach Phase 1
115 kV Electric Transmission Line Rebuild Project
in the City of Virginia Beach.**

**Virtual Community Meeting
March 5, 2025**



**Dominion
Energy[®]**

Agenda

- **WELCOME:** We appreciate you joining us! This meeting is being recorded. Your audio will remain muted throughout the presentation.
- **PROJECT BRIEF:** To replace aging equipment and maintain reliable service for our customers, we are rebuilding an existing 115 kilovolt (kV) electric transmission line between our Burton and Virginia Beach substations. This meeting is to share information on the first phase of the project.
- **Q&A:** Please submit your questions through the Q&A feature in Teams.

We are committed to working respectfully and being good neighbors in the communities we serve.



Safety Moment

Winter weather

- **BLACK ICE:** Black ice is very difficult to see and can easily cause a fall or an accident. Look for a slight sheen on the surface. In wintry conditions, always assume that black ice may be present.
- **DRIVING:** Be very careful if you must drive in winter weather conditions. Give yourself at least twice as much space with other vehicles and twice as much time to stop. Be especially careful on bridges as they will ice up first. Take an additional pause at green lights. Drive with your lights on.
- **BE PREPARED:** Have blankets, chargers, batteries, flashlights, food & water on hand. Don't forget about our furry friends. Look to news outlets for closures and other important information.



Project Team

Subject matter experts are here for you



Sean
Communications



Rick
Project Manager



Chloe
Engineering



Jacey
Permitting



Jacob
External Affairs

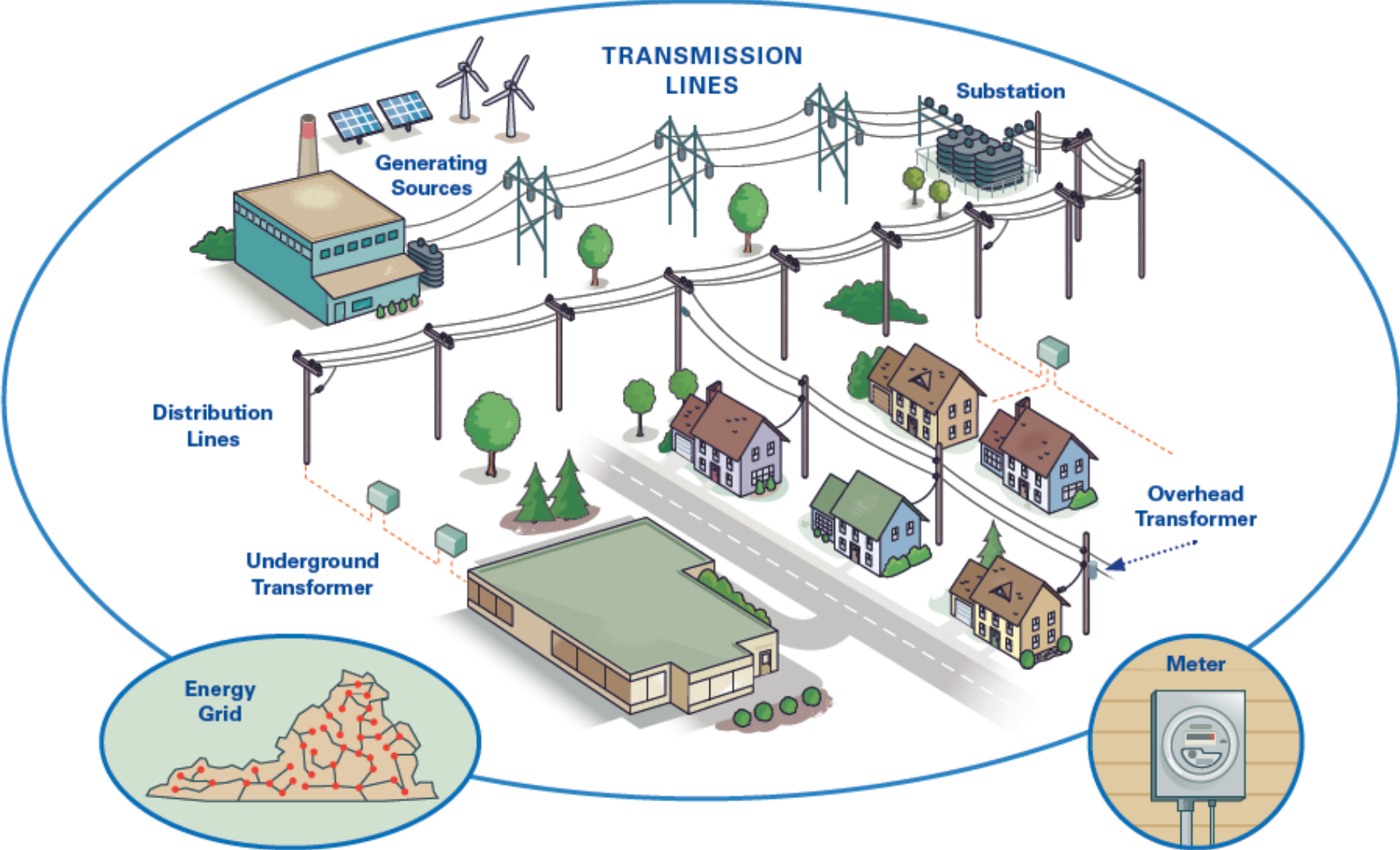


Clif
Access



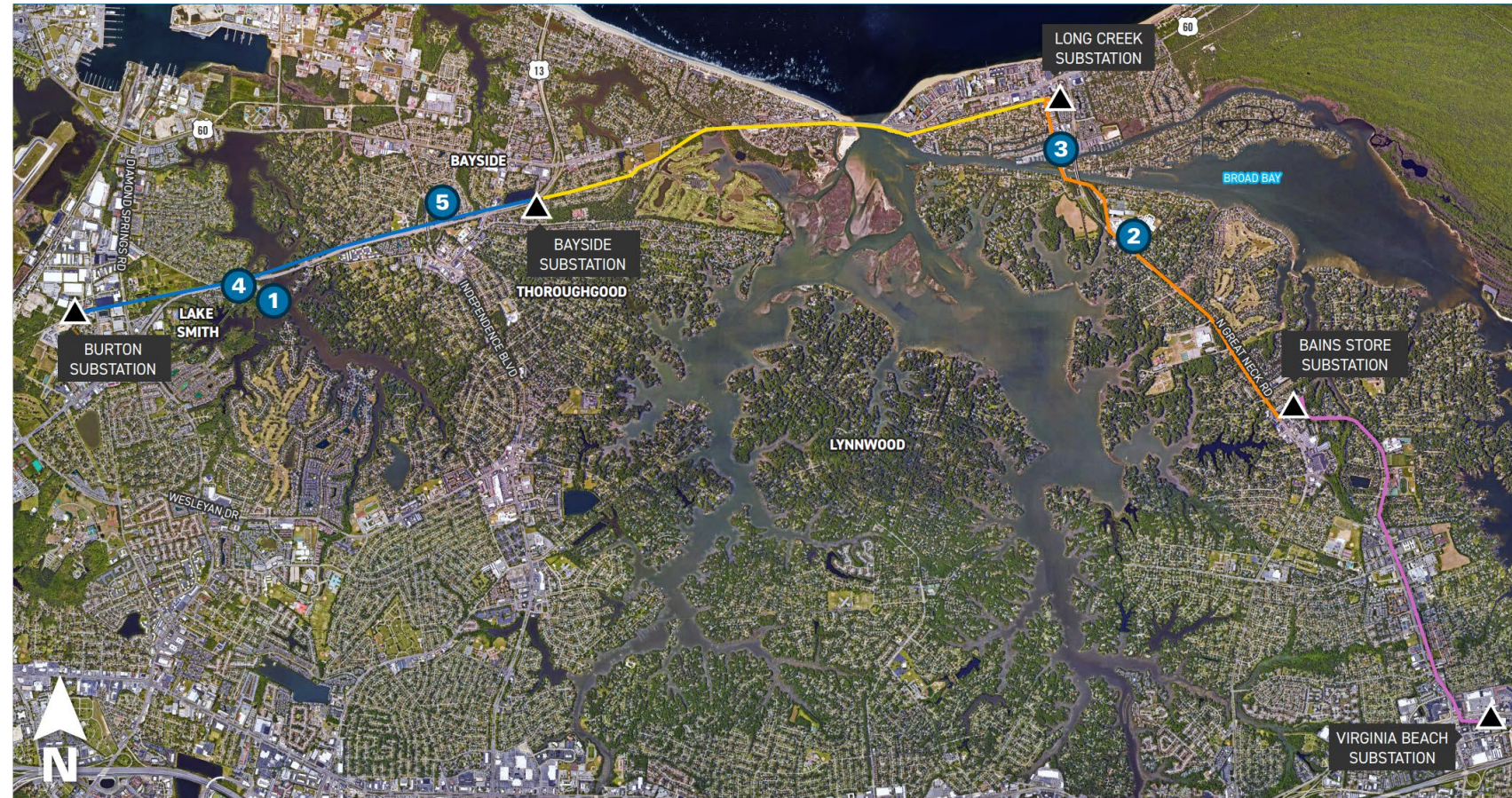
Lonnie
Construction

Electric Grid Overview



Project Overview

- Line 27 is a 115 kilovolt (kV) electric transmission line in north Virginia Beach running from the Burton Substation to the Bayside Substation, then Long Creek Substation, then Bains Store Substation, and ending at the Virginia Beach Substation.
- This project is necessary to replace aging infrastructure and maintain reliable service for our customers.
- Uses existing right of way corridor.
- 12.7 miles long



Additional Project Context

- After nearly five decades of dependable service, the existing structures and components of Line 27 are at the end of life and need to be replaced.
- Pole inspections revealed degradation of wooden structures from decay and woodpecker damage. Salt contamination also requires replacement of transmission equipment.
- 187 wooden structures will be replaced with steel structures. Some existing concrete and steel poles will remain, but most will be replaced.
- Distribution power lines are on most of these electric transmission structures and will continue to be.

Structures

Structure Comparison:



Construction Schedule

*Pending weather and progress

PRECONSTRUCTION

- **March – May 2025:** Access, staking new structure locations, forestry

CONSTRUCTION

PHASE 1: Burton – Bayside

- **April 2025 – September 2025**

PHASE 2: Long Creek – Bains Store

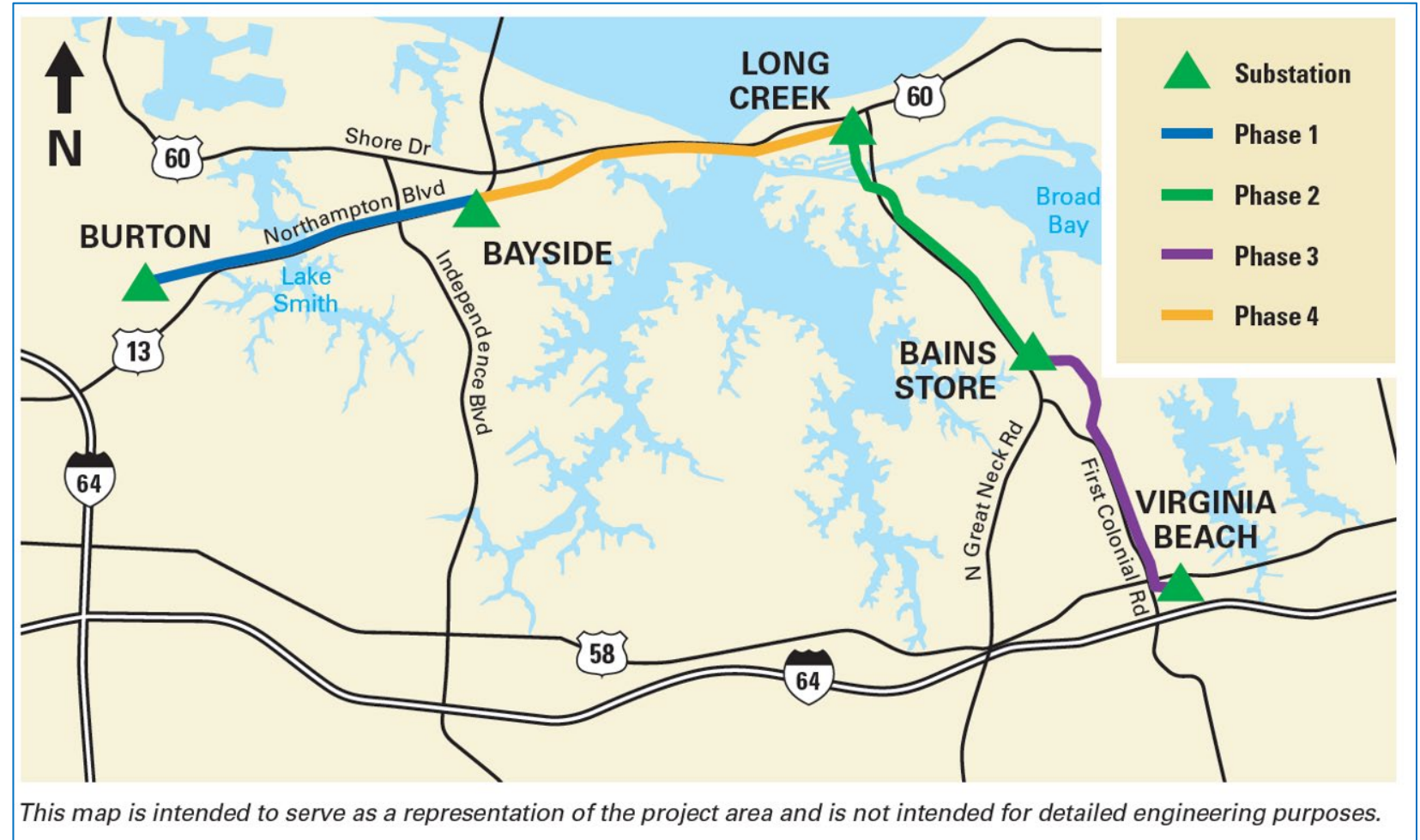
- **September 2025 – April 2026**

PHASE 3: Bains Store – Virginia Beach

- **April 2026 – September 2026**

PHASE 4: Bayside – Long Creek

- **September 2026 – December 2027**



Construction Access

- Where possible, we will access the right of way using existing roads.
- Construction entrances and/or additional access roads may be temporarily installed.
- Timber supports beneath the mats help to minimize disturbance to the ground or surface below.
- Matted support systems provide access through wetlands, swamps, and other sensitive areas.



Construction Activities (in general)



- Installing access roads
- Preparing the site
- Handling and staging materials
- Installing foundations
- Erecting structures
- Stringing wires (conductor + fiber)
- Removing the original structures along the rebuilt line segment
- Restoring the right of way

Photo Simulations – Viewpoint Map

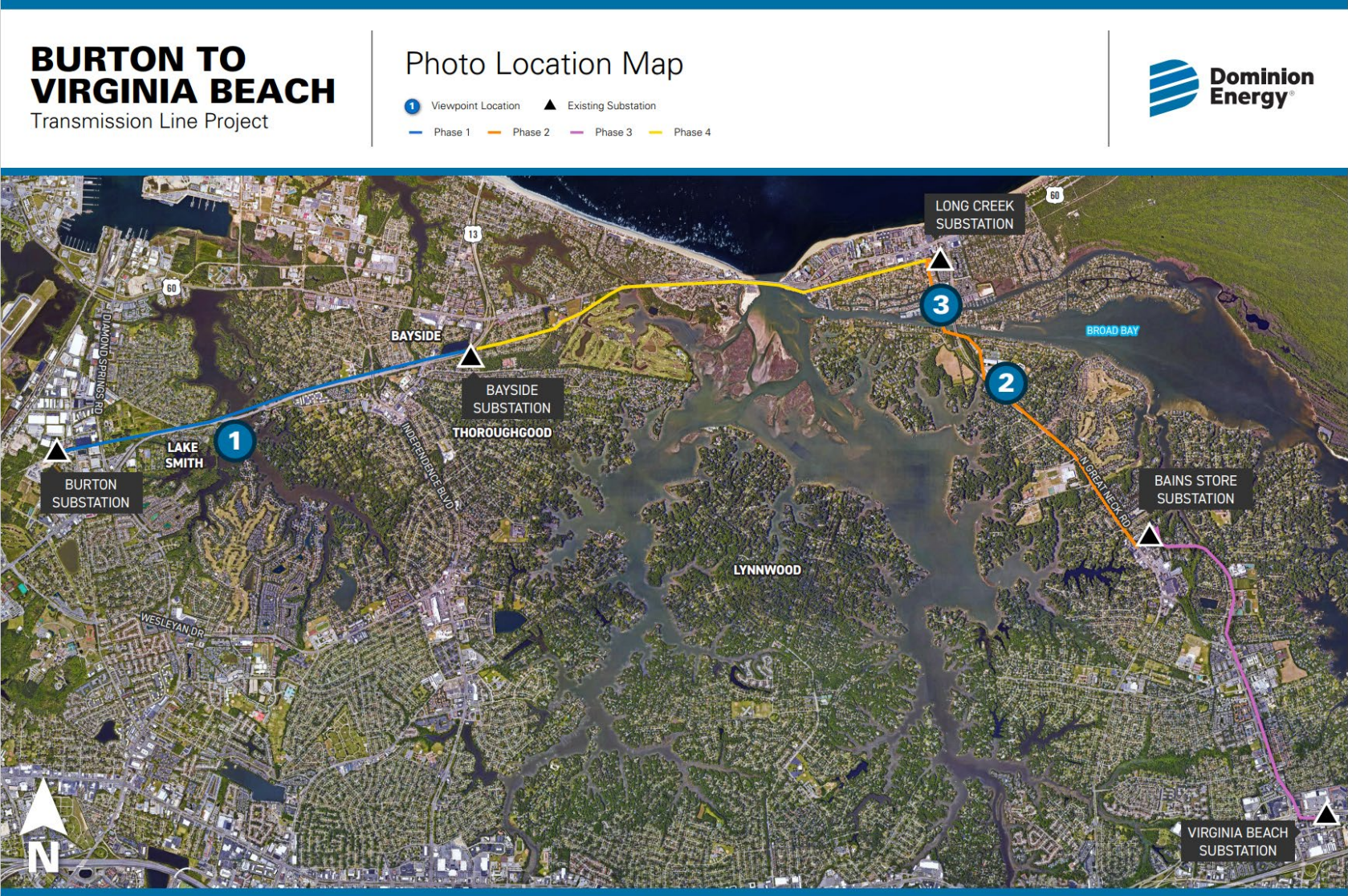
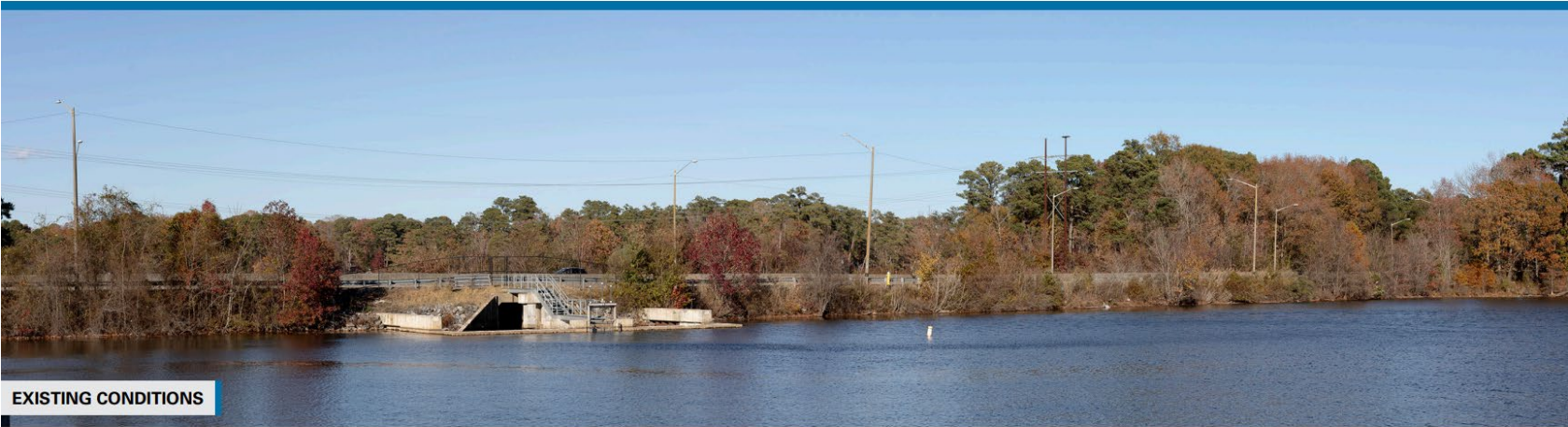


Photo Simulations – Lake Smith

BURTON TO VIRGINIA BEACH Transmission Line Project

Viewpoint 1

Date: 12/05/2024 Time: 3:20 pm Viewing Direction: Northeast
1 Viewpoint Location — Phase 1



EXISTING CONDITIONS



PROPOSED CONDITIONS

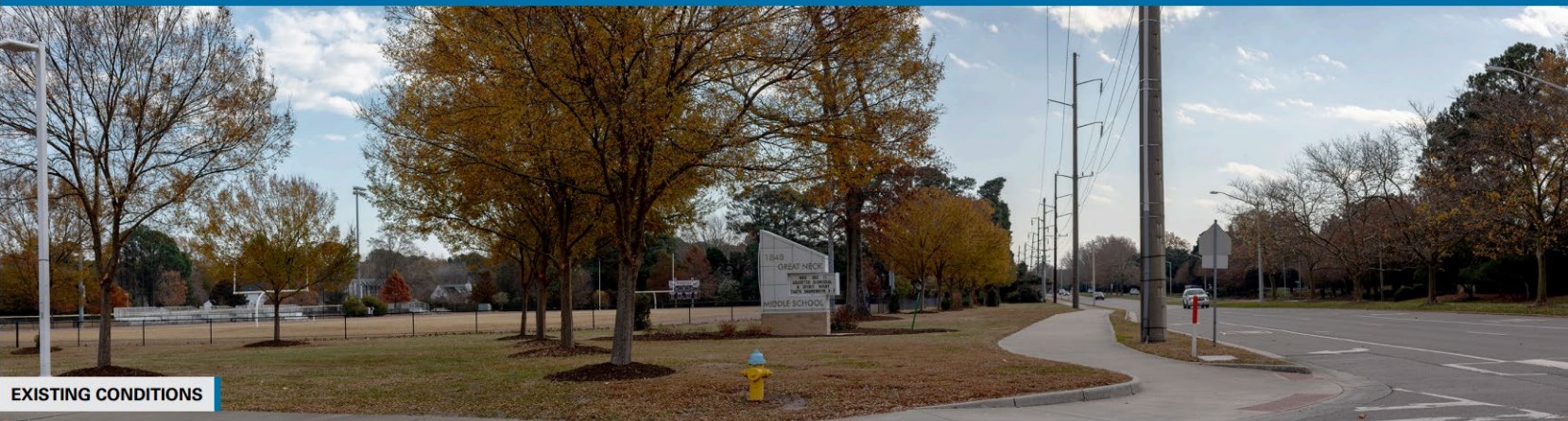
Photo simulations are for discussion purposes only. Final design is subject to change pending public, engineering, and regulatory review.

Photo Simulations – North Great Neck Road

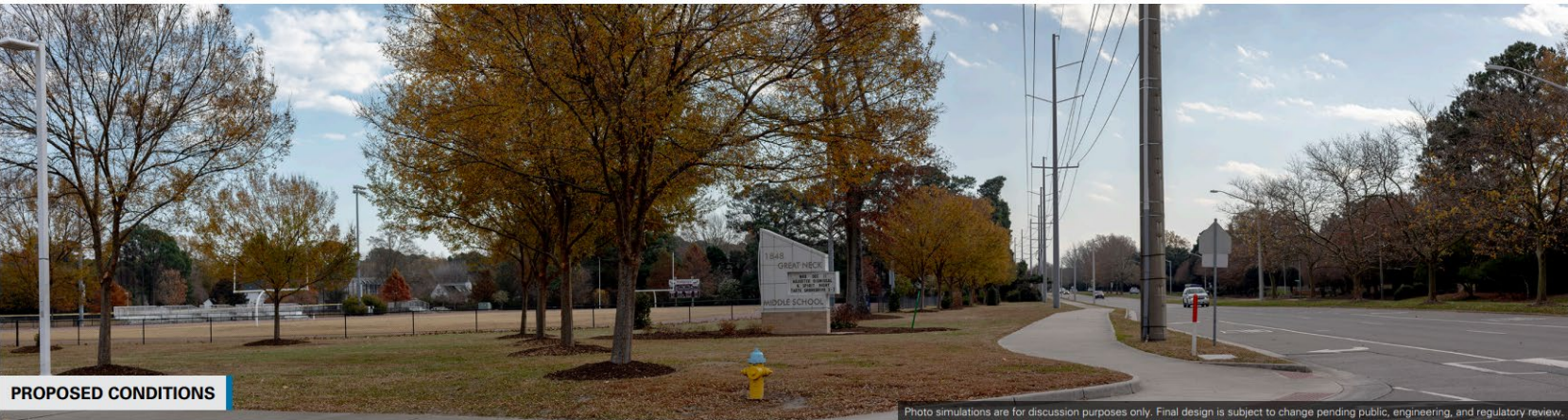
BURTON TO VIRGINIA BEACH Transmission Line Project

Viewpoint 2

Date: 12/05/2024 Time: 12:00 pm Viewing Direction: Southeast
Viewpoint Location Phase 2



EXISTING CONDITIONS



PROPOSED CONDITIONS

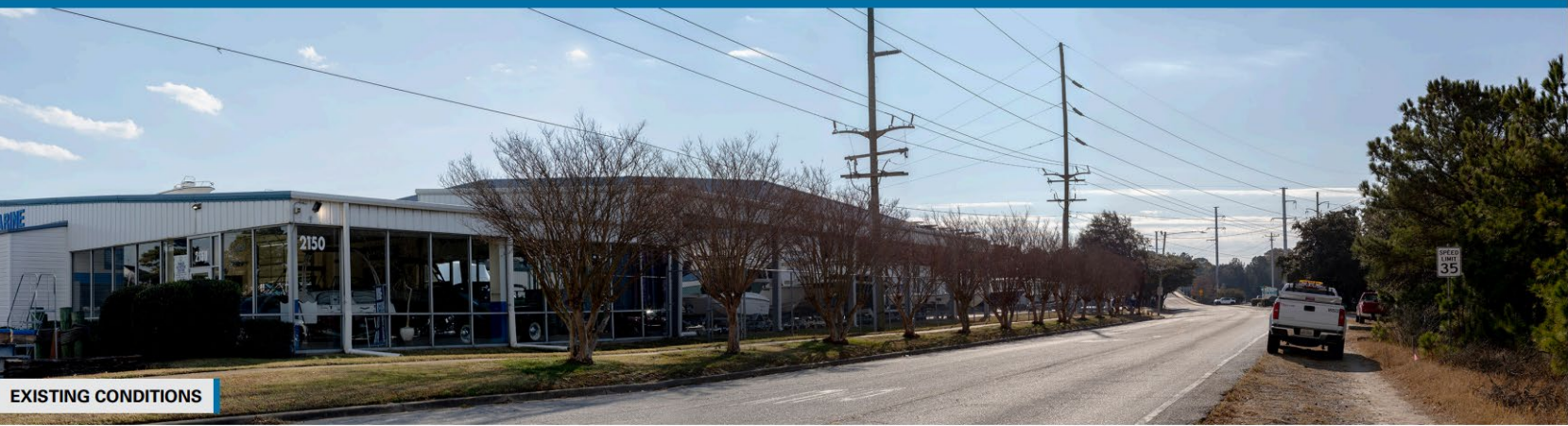
Photo simulations are for discussion purposes only. Final design is subject to change pending public, engineering, and regulatory review.

Photo Simulations – West Great Neck Road

BURTON TO VIRGINIA BEACH Transmission Line Project

Viewpoint 3

Date: 12/05/2024 Time: 11:15 am Viewing Direction: South
Viewpoint Location Phase 2



EXISTING CONDITIONS



PROPOSED CONDITIONS

Photo simulations are for discussion purposes only. Final design is subject to change pending public, engineering, and regulatory review.

Photo Simulations – Northampton Boulevard

BURTON TO VIRGINIA BEACH

Transmission Line Project

Viewpoint 4

Date: 12/05/2024 Time: 3:15 pm Viewing Direction: Northeast
④ Viewpoint Location — Phase 1

EXISTING CONDITIONS

PROPOSED CONDITIONS

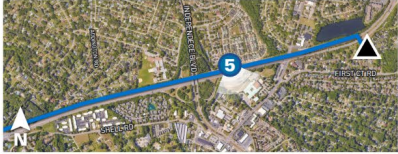
Photo simulations are for discussion purposes only. Final design is subject to change pending public, engineering, and regulatory review.

Photo Simulations – Rustic Arbor Way (facing Northampton Blvd)

BURTON TO VIRGINIA BEACH Transmission Line Project

Viewpoint 5

Date: 12/04/2024 Time: 2:58 pm Viewing Direction: Southeast
● Viewpoint Location — Phase 1 ▲ Bayside Substation



EXISTING CONDITIONS

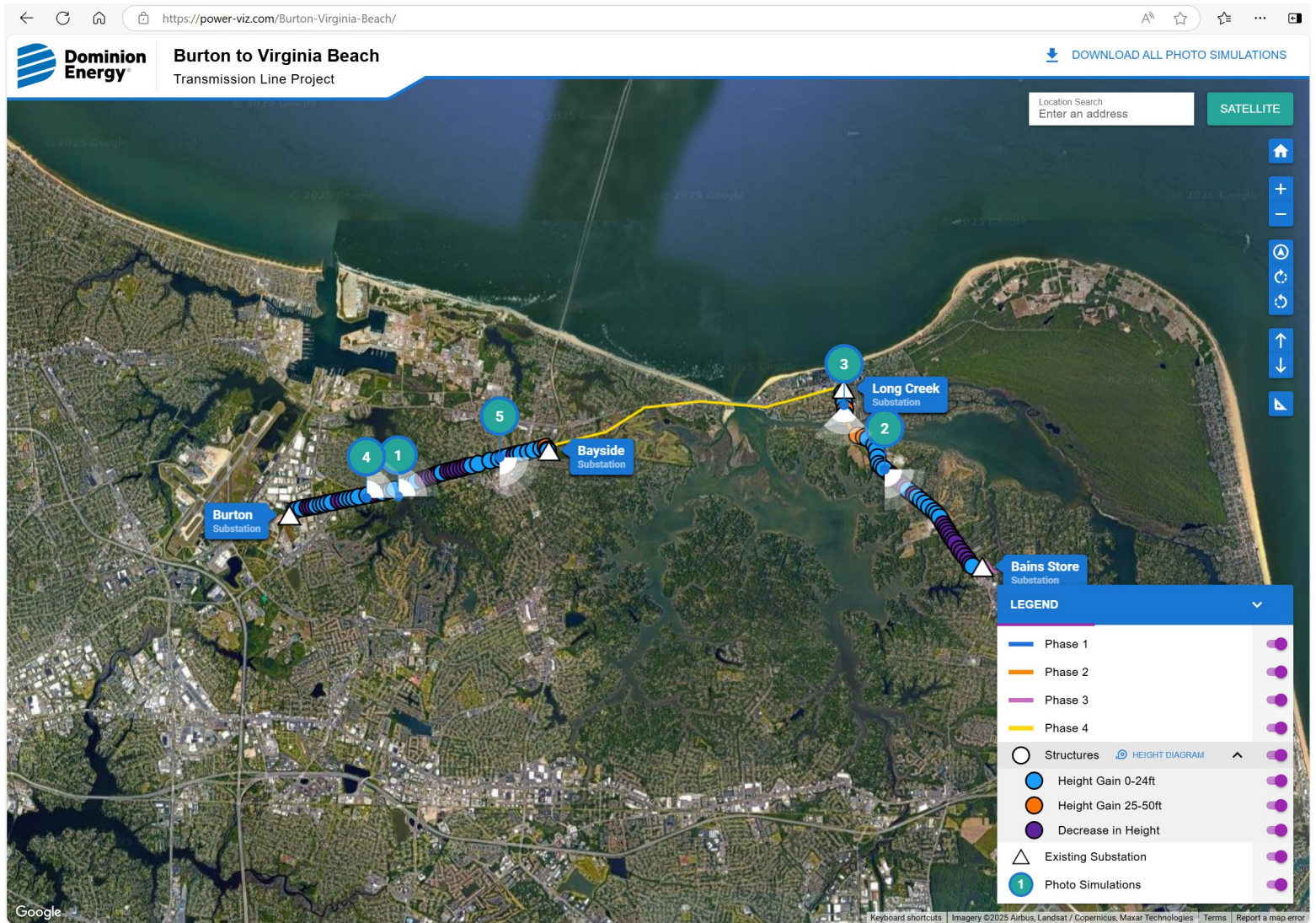


PROPOSED CONDITIONS

Photo simulations are for discussion purposes only. Final design is subject to change pending public, engineering, and regulatory review.

Interactive Project Map

Structure locations, types, and heights



Q&A

Please stand by as we compile your submitted questions.

Thank you for your patience!

Thank you for your time!

Connect with us if you have questions or feedback:

888-291-0190

powerline@dominionenergy.com

www.DominionEnergy.com/Burton-Virginia-Beach