



Existing Conditions



Proposed Conditions

# Butler Farm

Transmission Line Project

## Aerial Rendering 1

Clover to Butler Farm

### Typical Structure:

80' - Single-Circuit H-Frame

### Right-of-Way Width:

120 Feet

### Structure Material:

Weathering Steel

### Viewing Direction:

East

Visualization is for discussion purposes only.  
Final design is subject to change pending public,  
engineering, and regulatory review.





Existing Conditions



Proposed Conditions

# Butler Farm

Transmission Line Project

## Aerial Rendering 1

Clover to Butler Farm

### Typical Structure:

100' Single-Circuit Monopole

### Right-of-Way Width:

100 Feet

### Structure Material:

Galvanized Steel

### Viewing Direction:

East

Visualization is for discussion purposes only.  
Final design is subject to change pending public,  
engineering, and regulatory review.





Existing Conditions



Proposed Conditions

# Butler Farm

Transmission Line Project

## Aerial Rendering 1

Clover to Butler Farm

### Typical Structure:

100' Single-Circuit Monopole

### Right-of-Way Width:

100 Feet

### Structure Material:

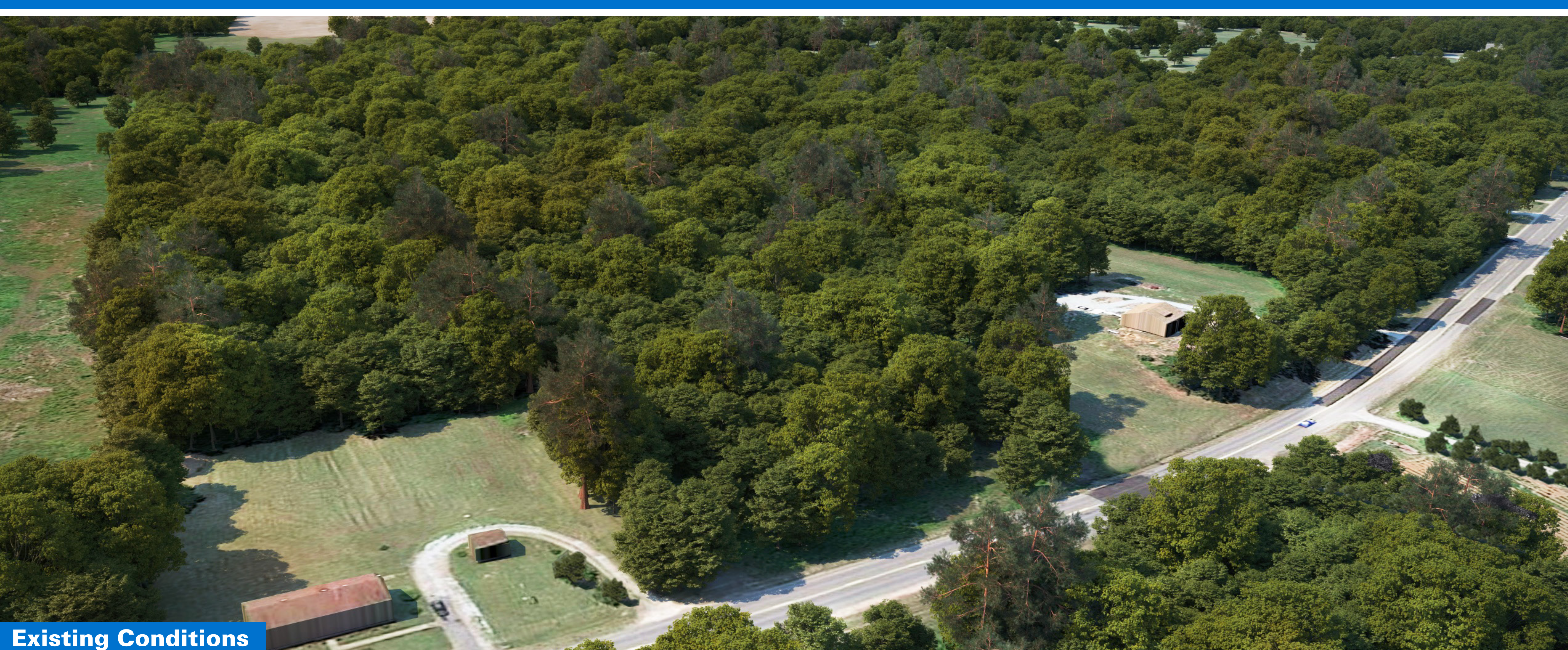
Weathering Steel

### Viewing Direction:

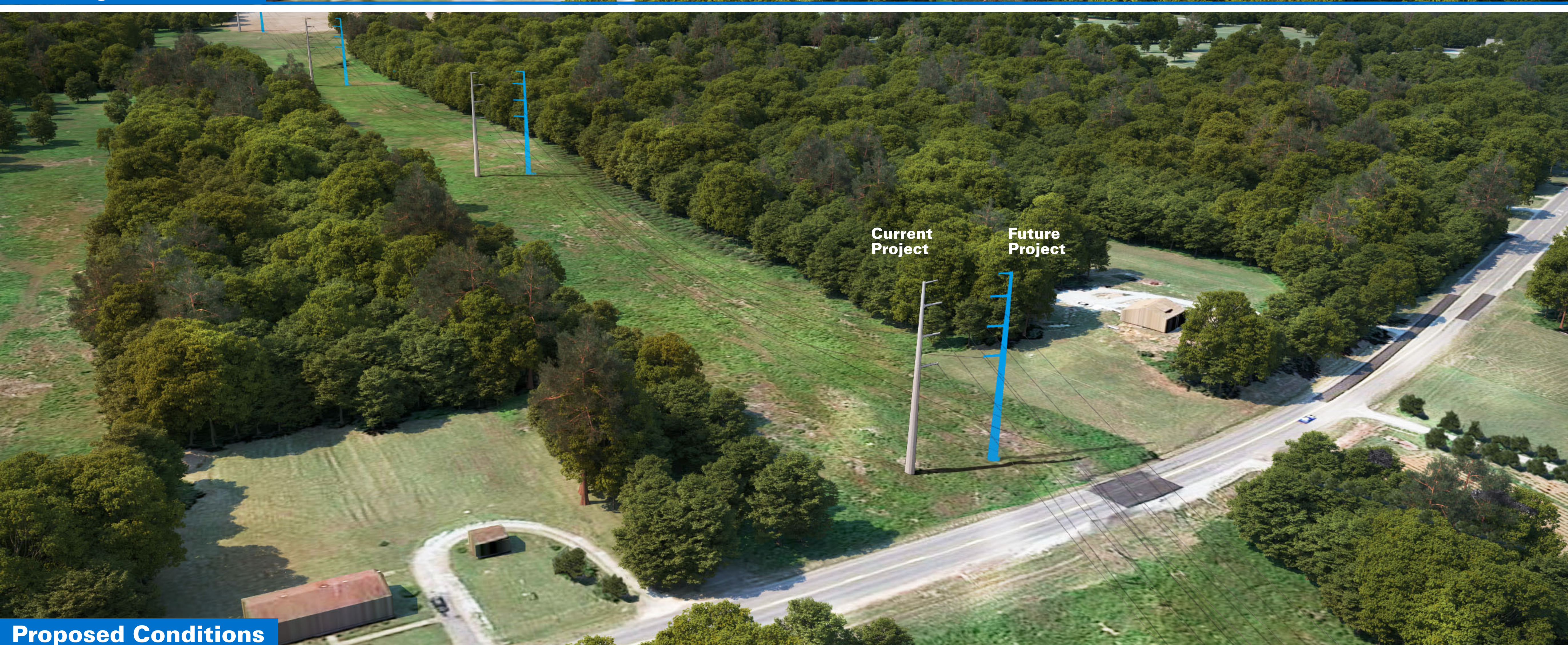
East

Visualization is for discussion purposes only.  
Final design is subject to change pending public,  
engineering, and regulatory review.





Existing Conditions



Proposed Conditions

# Butler Farm

Transmission Line Project

## Aerial Rendering 3

Finneywood to Butler Farm

### Typical Structure:

120' - Single-Circuit Monopoles

### Right-of-Way Width:

100 Feet

### Structure Material:

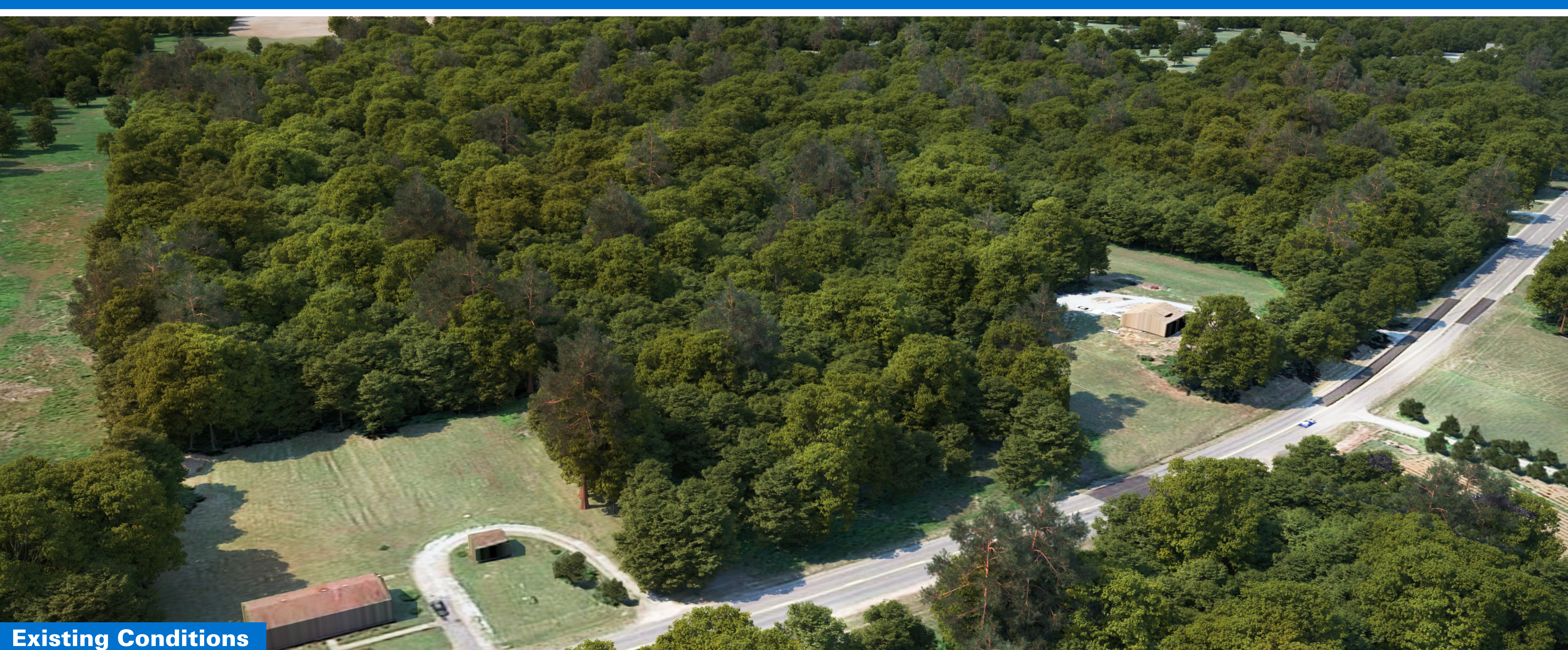
Galvanized Steel

### Viewing Direction:

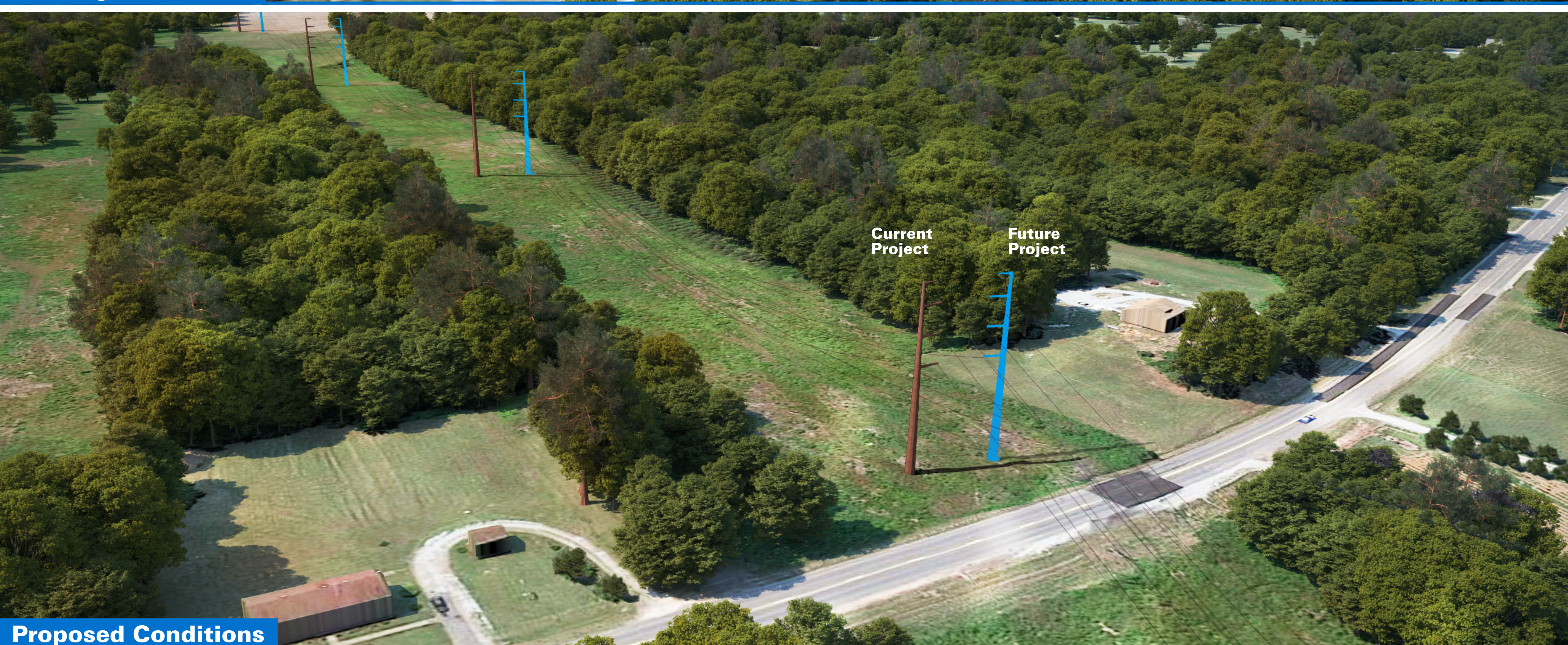
Southwest

Visualization is for discussion purposes only.  
Final design is subject to change pending public,  
engineering, and regulatory review.





Existing Conditions



Proposed Conditions

# Butler Farm

Transmission Line Project

## Aerial Rendering 3

Finneywood to Butler Farm

### Typical Structure:

120' - Single-Circuit Monopoles

### Right-of-Way Width:

100 Feet

### Structure Material:

Weathering Steel

### Viewing Direction:

Southwest

Visualization is for discussion purposes only.  
Final design is subject to change pending public,  
engineering, and regulatory review.