

CENTREPORT
230 kV Electric Transmission Project
Dominion Energy Virginia
Stafford County Virginia



KOP 1
Interstate 95

Date: 04/24/2024
Time: 11:34 am
Viewing Direction: Southwest
Distance to closest feature: .25 mi

EXISTING CONDITIONS



PROPOSED CONDITIONS



Legend		
 KOP View Direction	 > Route 2	 > Route 3
 Dominion Existing Transmission Line	 Route 2	 Route 3
	 100ft Right of Way	 100ft Right of Way

Note: Project components illustrated are based on proposed preliminary designs. The images contained on this page show the proposed project within a wider landscape context and are not representative of scale and distance when viewed from the actual view point.

CENTREPORT
230 kV Electric Transmission Project
Dominion Energy Virginia
Stafford County Virginia



KOP 1
Interstate 95

Date: 04/24/2024
Time: 11:34 am
Viewing Direction: Southwest
Distance to closest feature: .25 mi



EXISTING CONDITIONS



HIDDEN PROJECT INFRASTRUCTURE SHOWN IN YELLOW



Legend		
 KOP View Direction	 > Route 2	 > Route 3
 Dominion Existing Transmission Line	 Route 2	 Route 3
	 100ft Right of Way	 100ft Right of Way

Note: Project components illustrated are based on proposed preliminary designs. The images contained on this page show the proposed project within a wider landscape context and are not representative of scale and distance when viewed from the actual view point.



KOP 5

Centreport Pkwy & Mountain View Rd

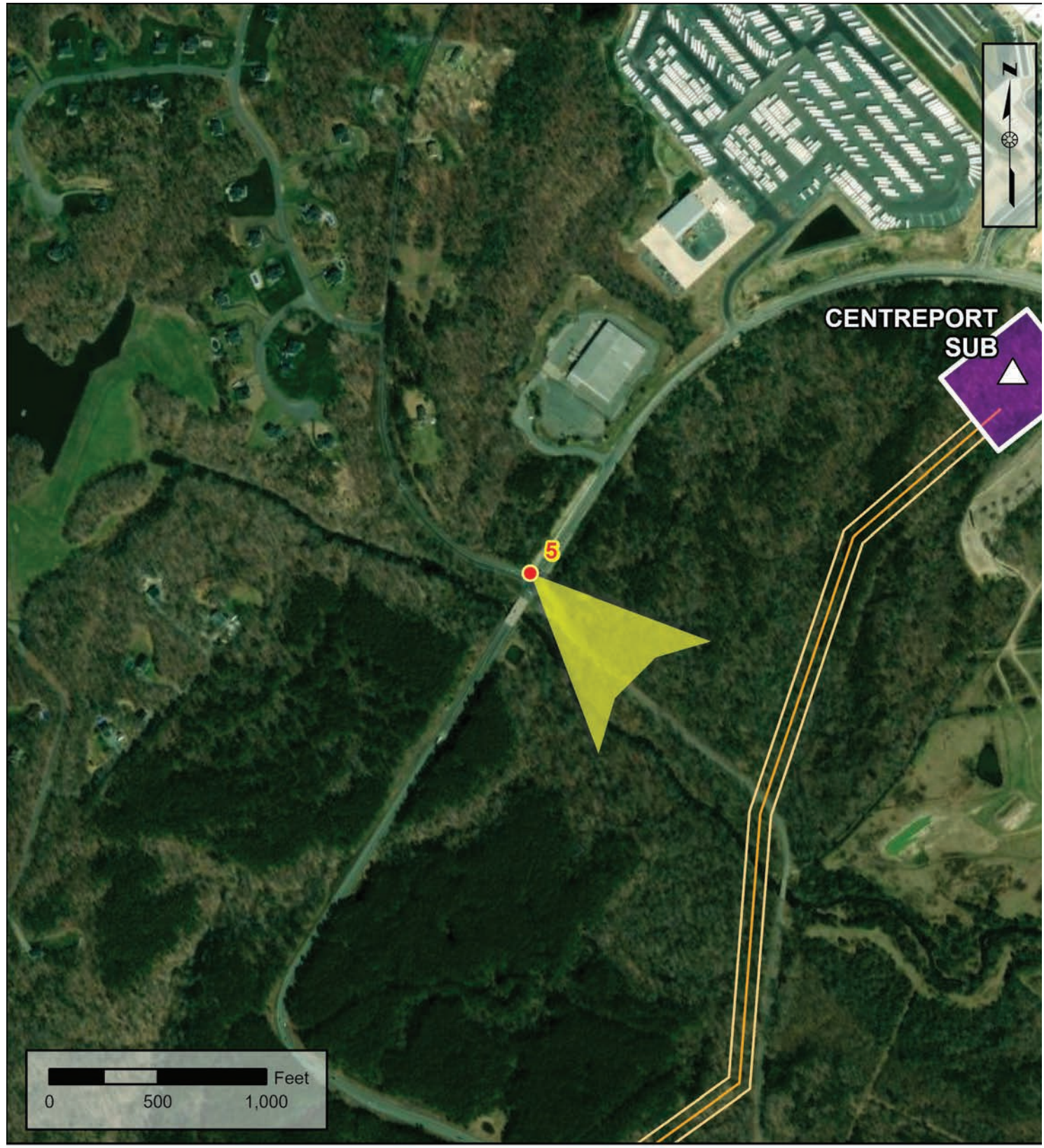
Date: 04/24/2024
Time: 1:35 am
Viewing Direction: Southeast
Distance to closest feature: .25 mi



EXISTING CONDITIONS



HIDDEN PROJECT INFRASTRUCTURE SHOWN IN YELLOW



Legend

- KOP View Direction
- Proposed Substation Boundary
- Route 1
- 100ft Right of Way

Note: Project components illustrated are based on proposed preliminary designs. The images contained on this page show the proposed project within a wider landscape context and are not representative of scale and distance when viewed from the actual view point.

CENTREPORT
230 kV Electric Transmission Project
Dominion Energy Virginia
Stafford County Virginia



KOP 8
Alabaster Ln

Date: 04/25/2024
Time: 2:47 pm
Viewing Direction: Southeast
Distance to closest feature: 951 ft



EXISTING CONDITIONS



PROPOSED CONDITIONS



Legend

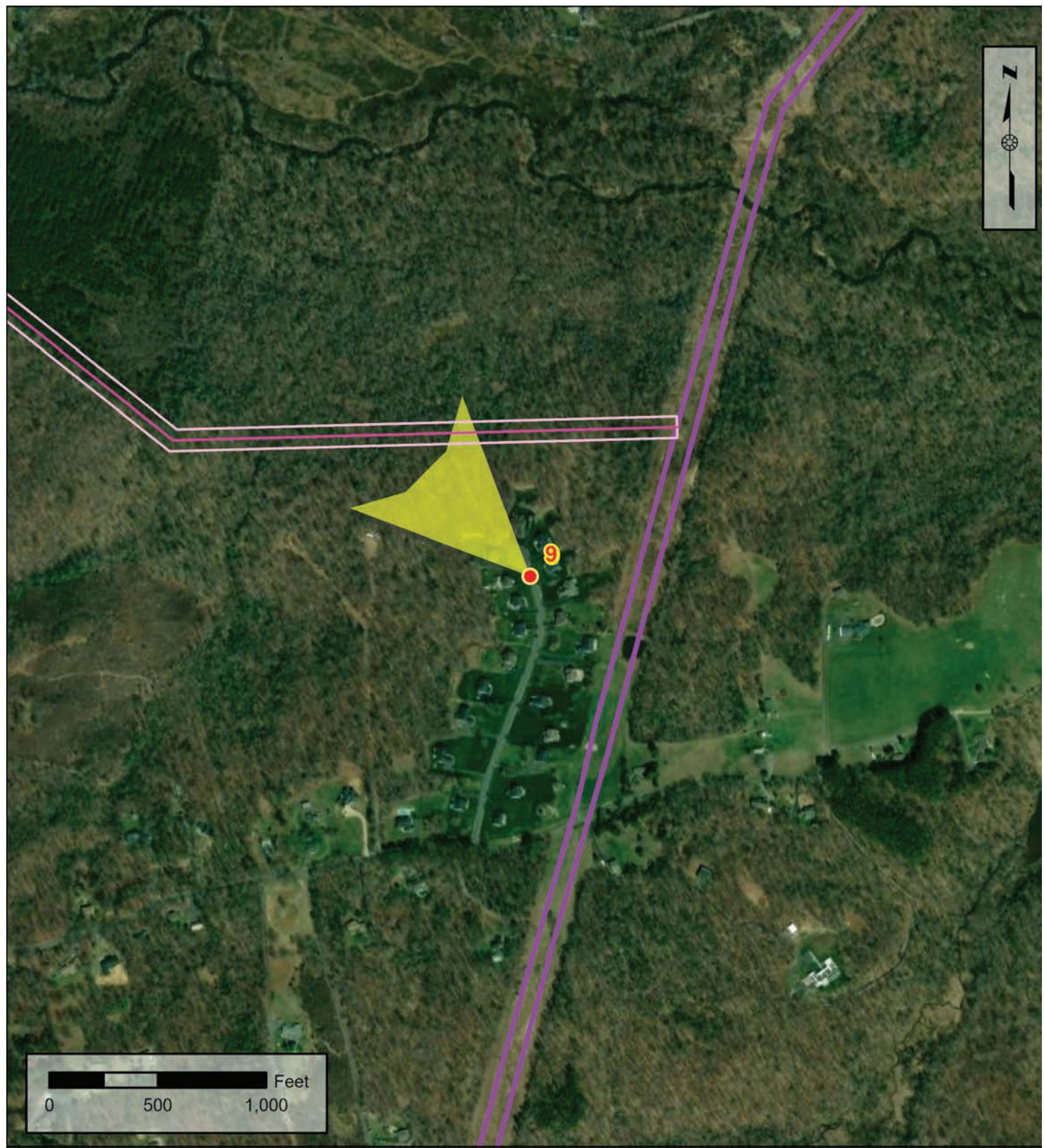
- KOP View Direction
- Dominion Existing Transmission Line
- Route 3
- 100ft Right of Way

Note: Project components illustrated are based on proposed preliminary designs. The images contained on this page show the proposed project within a wider landscape context and are not representative of scale and distance when viewed from the actual view point.



KOP 9
Cranes Bluff Ct

Date: 04/25/2024
Time: 11:34 am
Viewing Direction: North
Distance to closest feature: 688 ft



Legend

- Yellow arrow: KOP View Direction
- Purple line: Dominion Existing Transmission Line
- Blue line: Route 2
- Pink line: 100ft Right of Way

Note: Project components illustrated are based on proposed preliminary designs. The images contained on this page show the proposed project within a wider landscape context and are not representative of scale and distance when viewed from the actual view point.





KOP 9
Cranes Bluff Ct

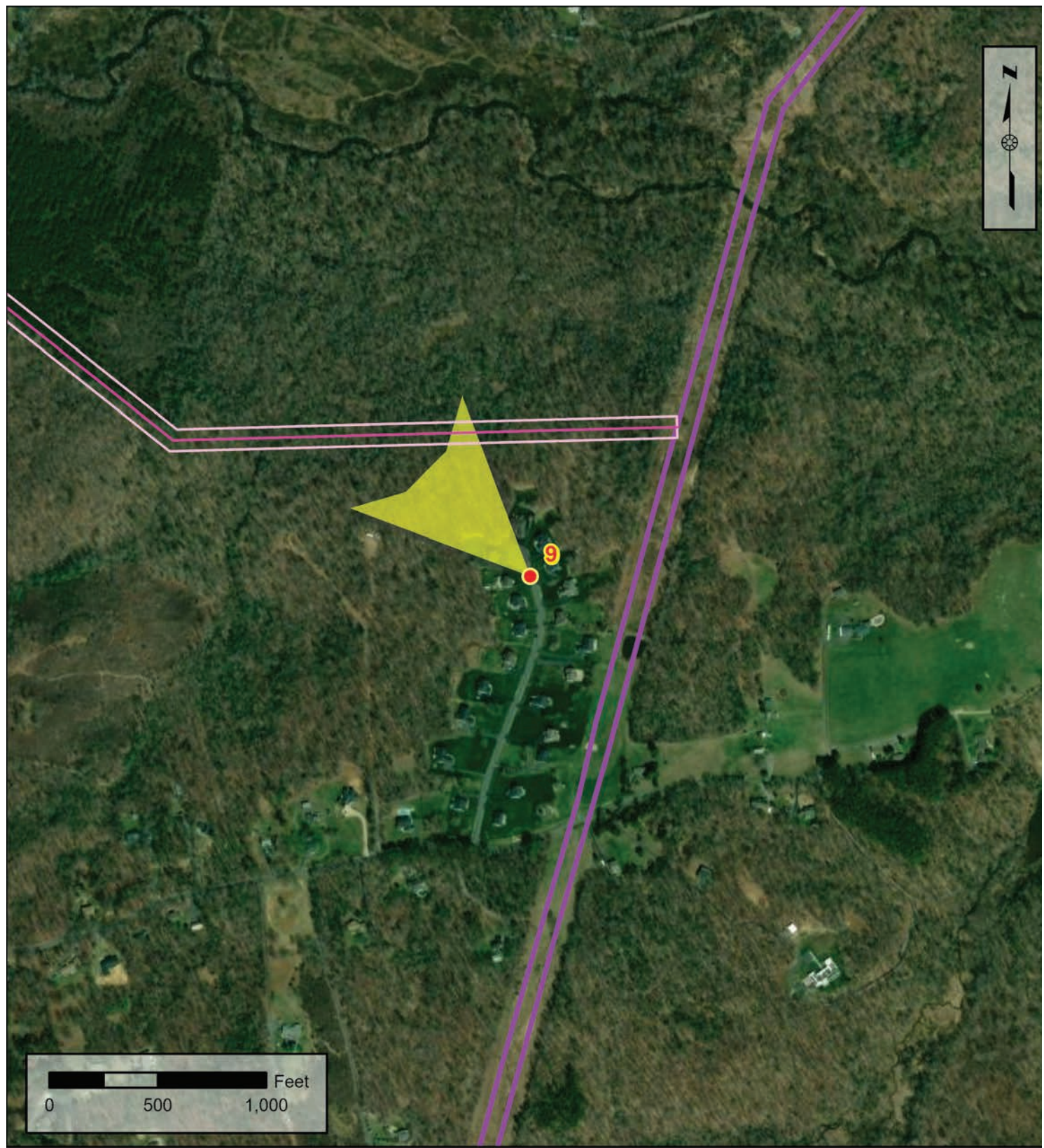
Date: 04/25/2024
Time: 11:34 am
Viewing Direction: North
Distance to closest feature: 688 ft



EXISTING CONDITIONS



HIDDEN PROJECT INFRASTRUCTURE SHOWN IN YELLOW



Legend

- KOP View Direction
- Dominion Existing Transmission Line
- Route 2
- Route 2
- 100ft Right of Way

Note: Project components illustrated are based on proposed preliminary designs. The images contained on this page show the proposed project within a wider landscape context and are not representative of scale and distance when viewed from the actual view point.



KOP 13
Enon Rd

Date: 04/25/2024
Time: 12:07 pm
Viewing Direction: Northwest
Distance to closest feature: 624 ft



EXISTING CONDITIONS



PROPOSED CONDITIONS



Legend

- KOP View Direction
- Route 1
- 100ft Right of Way

Note: Project components illustrated are based on proposed preliminary designs. The images contained on this page show the proposed project within a wider landscape context and are not representative of scale and distance when viewed from the actual view point.

KOP 17

Cambridge St

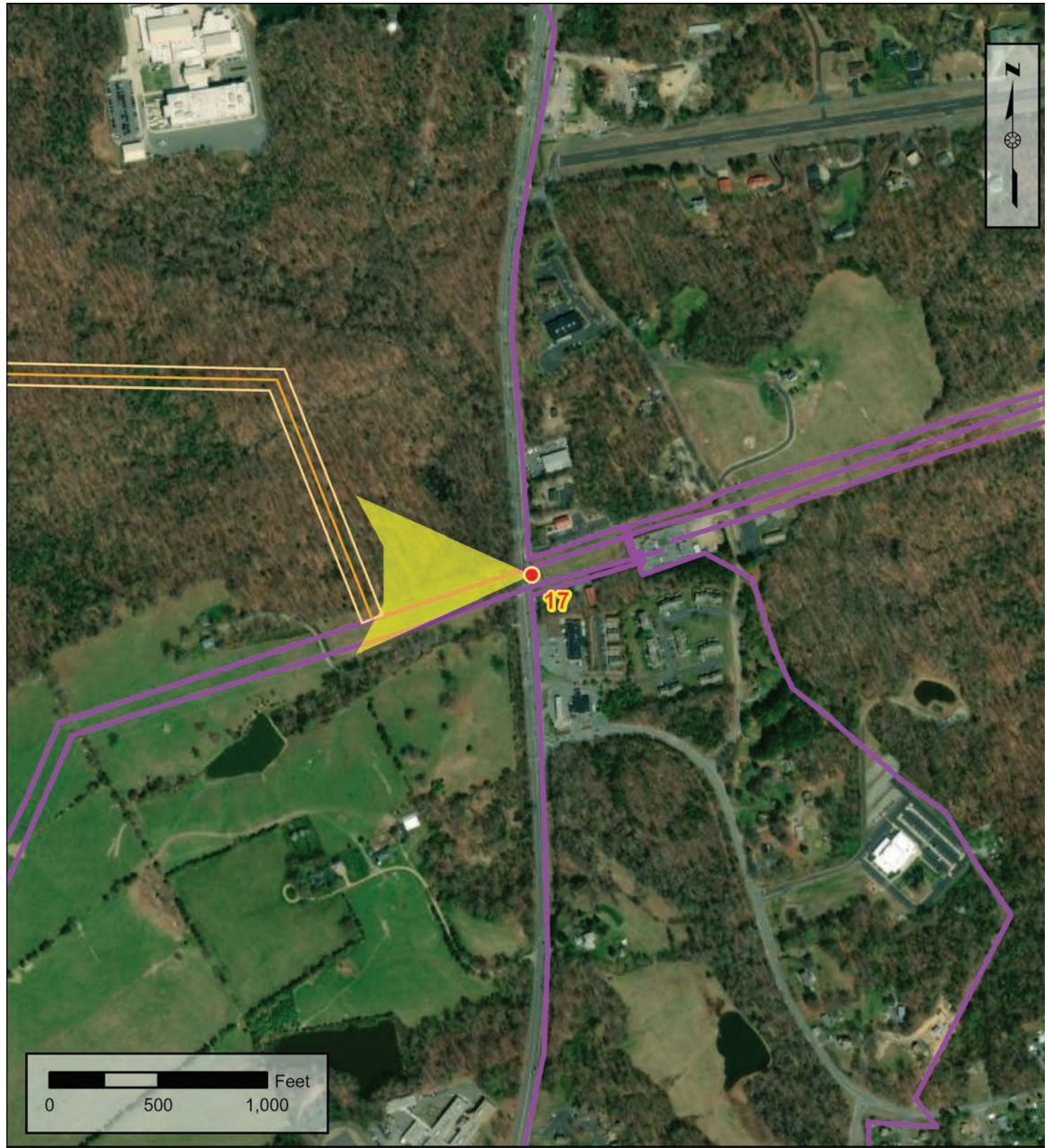
Date: 04/25/2024

Time: 1:23 pm

Viewing Direction: West

Distance to closest feature: 680 ft

EXISTING CONDITIONS



Legend

-  KOP View Direction

 Dominion Existing Transmission Line
-  > Route 1

 Route 1

 100ft Right of Way

Note: This simulation shows the proposed conditions for the Centreport project and the Fredericksburg to Possum Point Line Rebuild Project, which was filed with the Virginia State Corporation Commission (SCC) in 2023 and is pending approval. Proposed conditions display structures as filed and are subject to changed based on SCC approval and final engineering.

PROPOSED CONDITIONS