

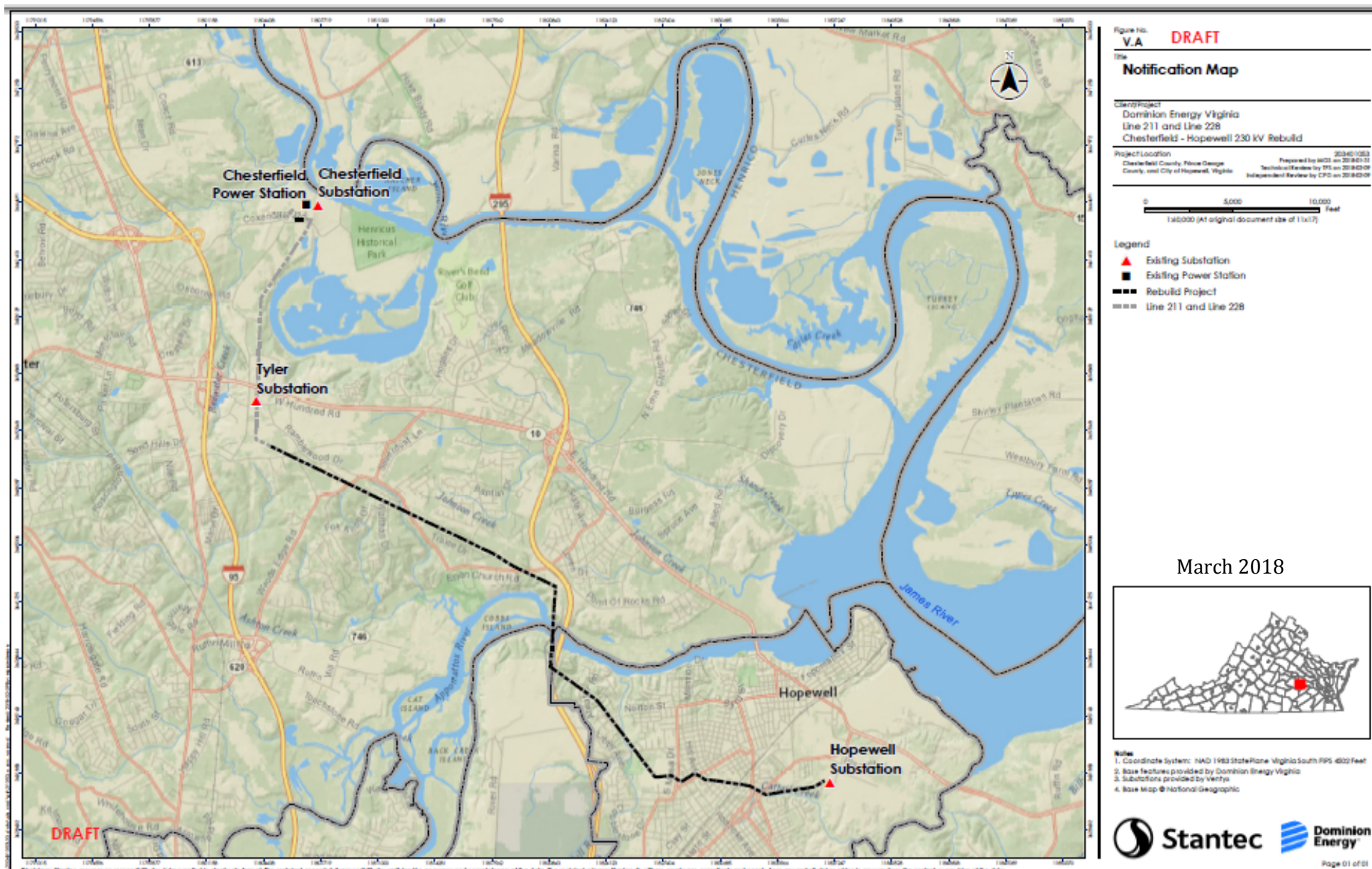
Chesterfield – Hopewell

230 kV Double-Circuit Transmission Line Rebuild Project

March 2018

Agenda

- Introductions
- Project Need
- Scope of Project
- Community Engagement



Reliability Concerns & Drivers

Approximately 8 miles of double-circuit 230 kV transmission line between Chesterfield – Hopewell Substations at end of service life

- Structures were installed in the late 1960s
- COR-TEN® weathering steel towers have experienced issues across Dominion Energy's system when used for lattice-type structures
- Static wire is also at the end of its useful life



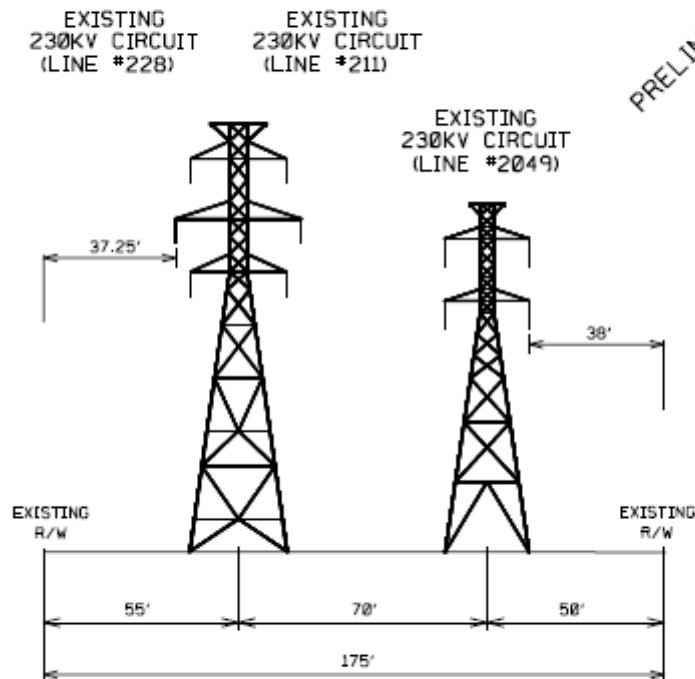


Proposed Solution

In order to maintain structural integrity and reliability, Dominion Energy is proposing to rebuild the existing transmission lines and replace fiber

- Located entirely within existing right of way
- Replacement of lattice structures with monopole structures
- Proposed weathering steel to match replaced and remaining poles
- Partial co-location with another transmission line
- Rebuilding to current industry standards
- Target completion date: **December 2020**

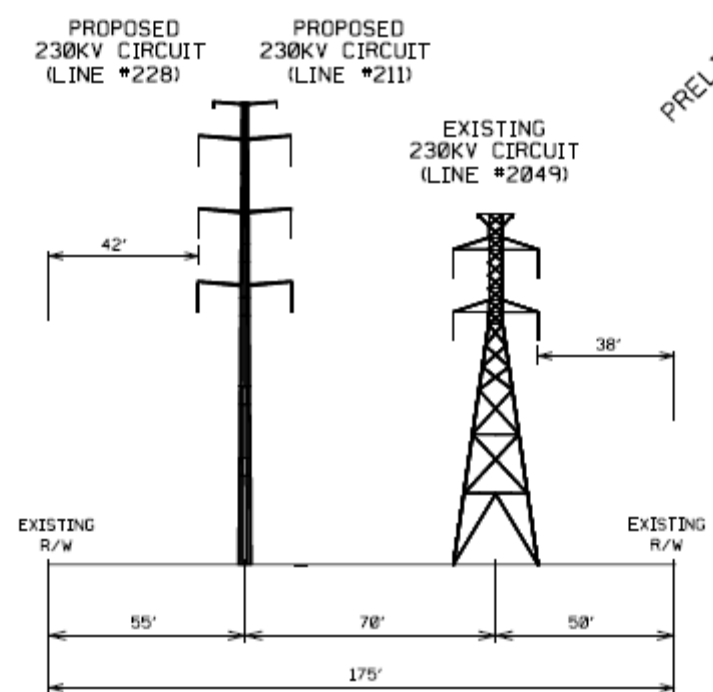
STRUCTURE NUMBER 19 TO 35



EXISTING CONFIGURATION
TYPICAL RIGHT OF WAY LOOKING TOWARD HOPEWELL

Heights range: 106' – 146'

STRUCTURE NUMBER 19 TO 35

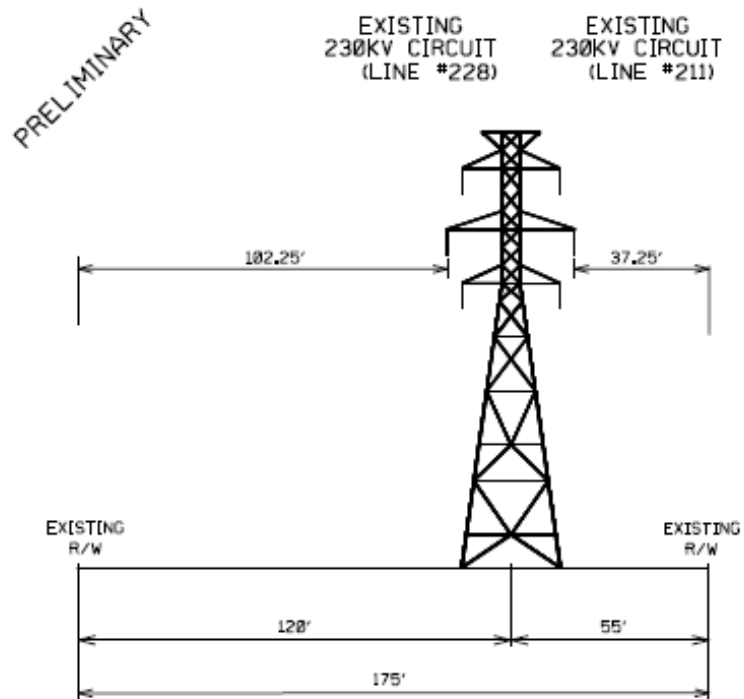


PROPOSED CONFIGURATION
TYPICAL RIGHT OF WAY LOOKING TOWARD HOPEWELL

Proposed Heights range: 120' – 146'

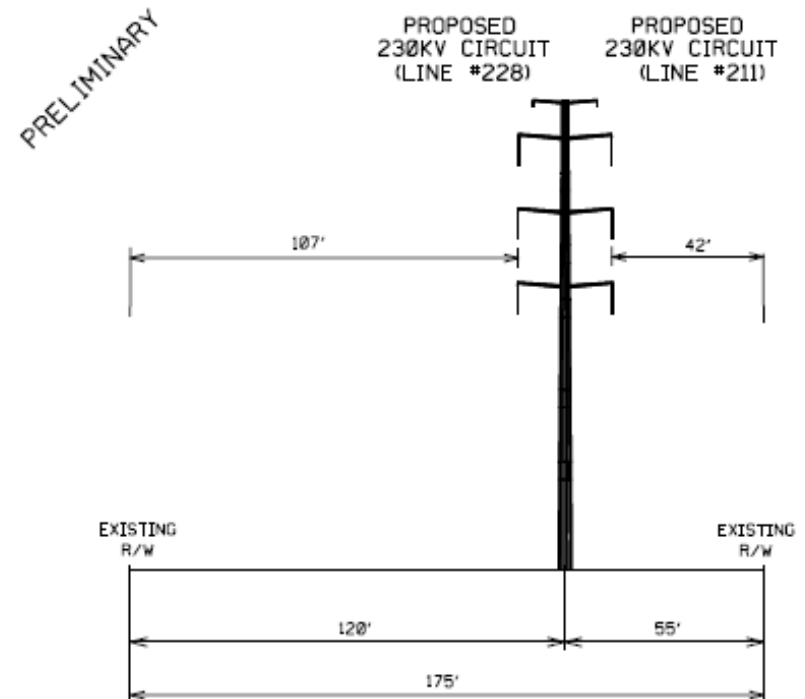
*Subject to final engineering

STRUCTURE NUMBER 35 TO 39



EXISTING CONFIGURATION
TYPICAL RIGHT OF WAY LOOKING TOWARD HOPEWELL
 Heights range: 111' – 124'

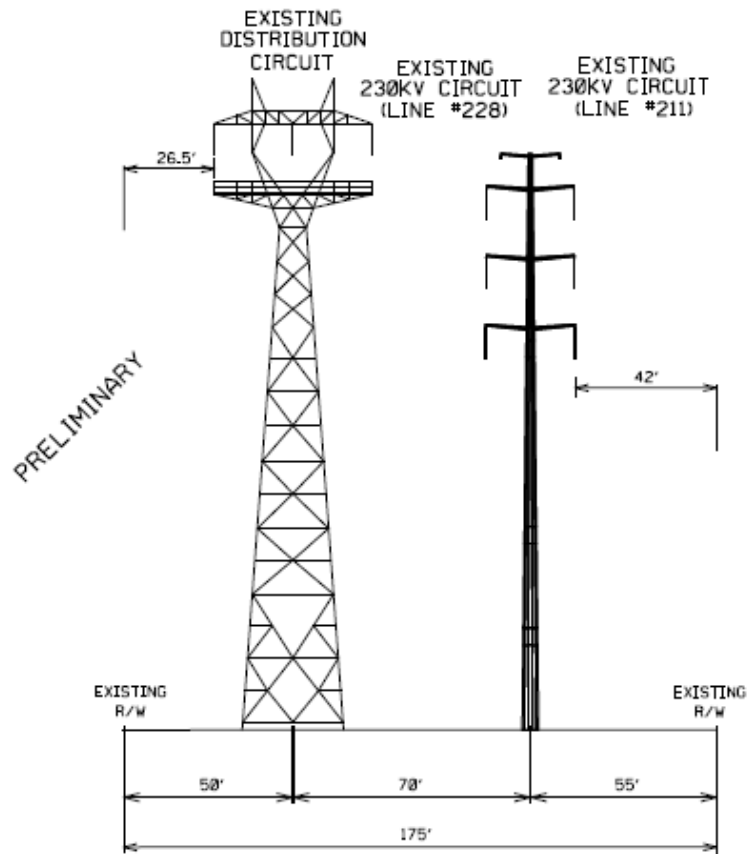
STRUCTURE NUMBER 35 TO 39



PROPOSED CONFIGURATION
TYPICAL RIGHT OF WAY LOOKING TOWARD HOPEWELL
 Proposed Height: 130'

*Subject to final engineering

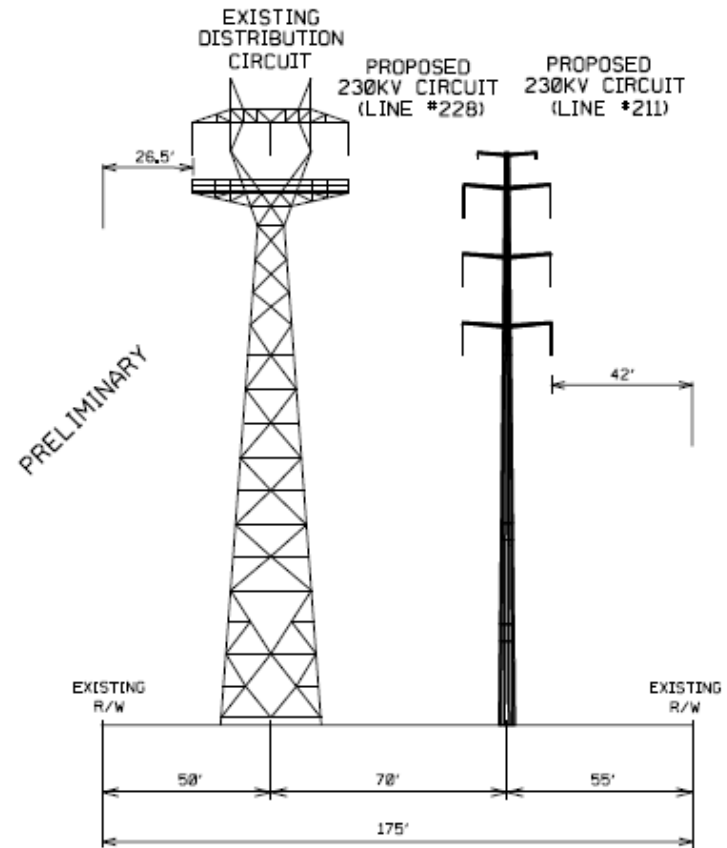
STRUCTURE NUMBER 39 TO 41



EXISTING CONFIGURATION
TYPICAL RIGHT OF WAY LOOKING TOWARD HOPEWELL

Heights range: 120' – 170'

STRUCTURE NUMBER 39 TO 41



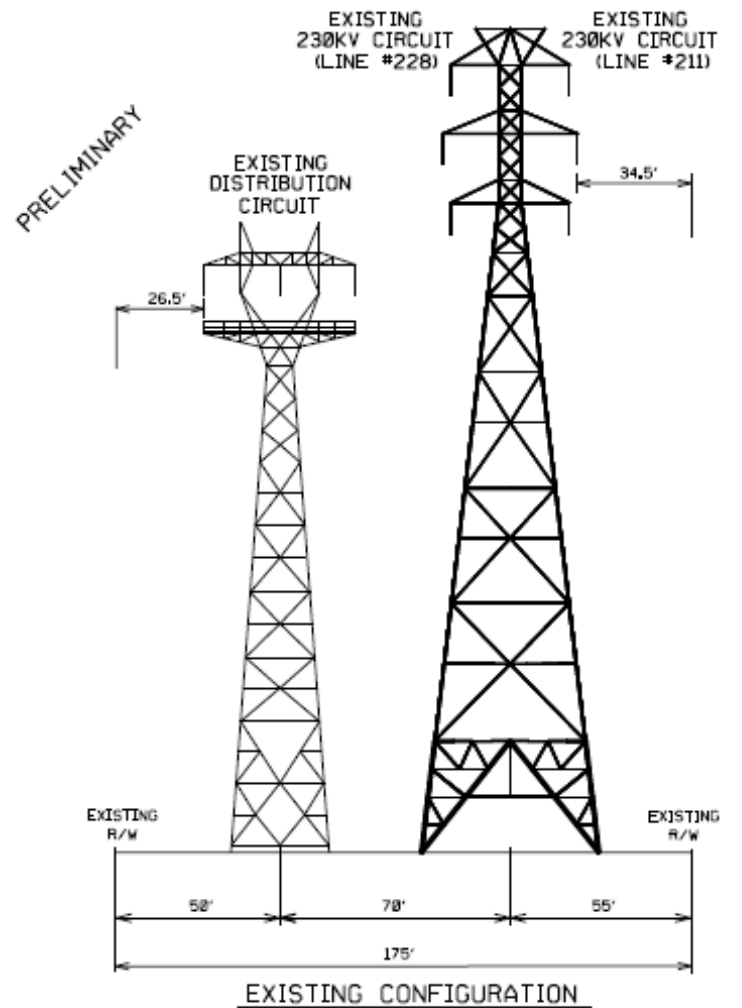
PROPOSED CONFIGURATION
TYPICAL RIGHT OF WAY LOOKING TOWARD HOPEWELL

Proposed Heights range: 105' – 170'

(not replacing Str.# 40 & 41)

*Subject to final engineering

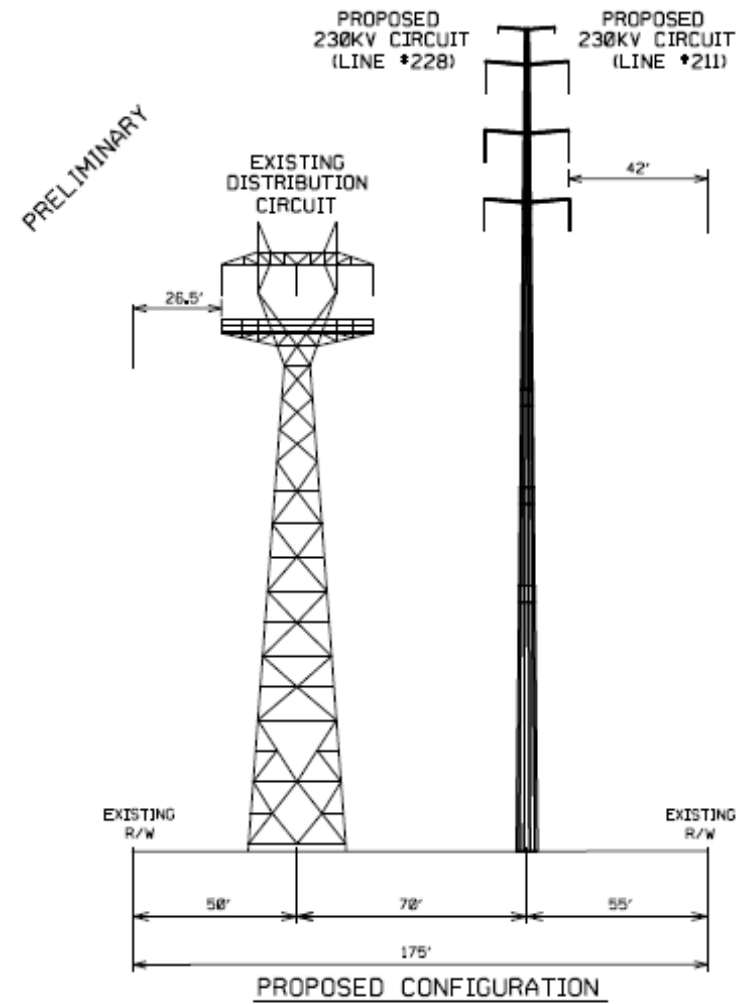
STRUCTURE NUMBER 41 TO 43



TYPICAL RIGHT OF WAY LOOKING TOWARD HOPEWELL

Heights range: 123' – 251'

STRUCTURE NUMBER 41 TO 43

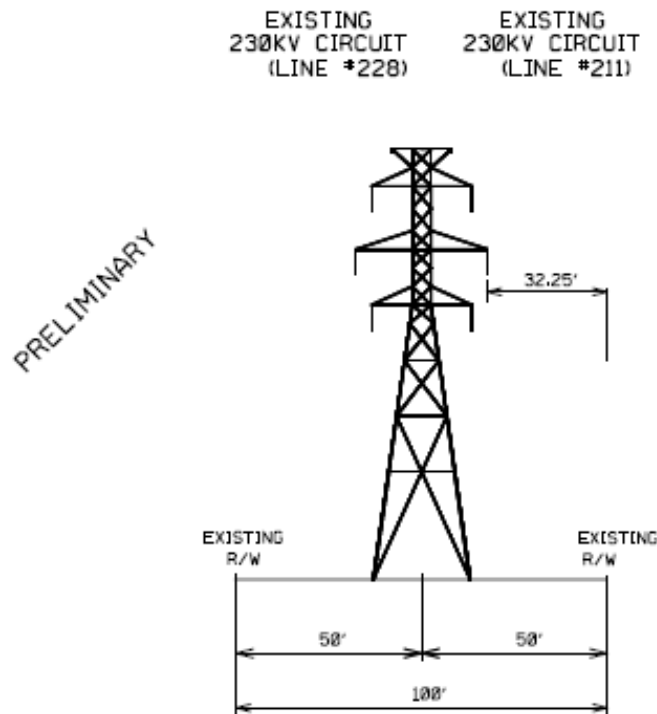


TYPICAL RIGHT OF WAY LOOKING TOWARD HOPEWELL

Proposed Heights range: 105' – 251'

*Subject to final engineering

STRUCTURE NUMBER 43 TO 68

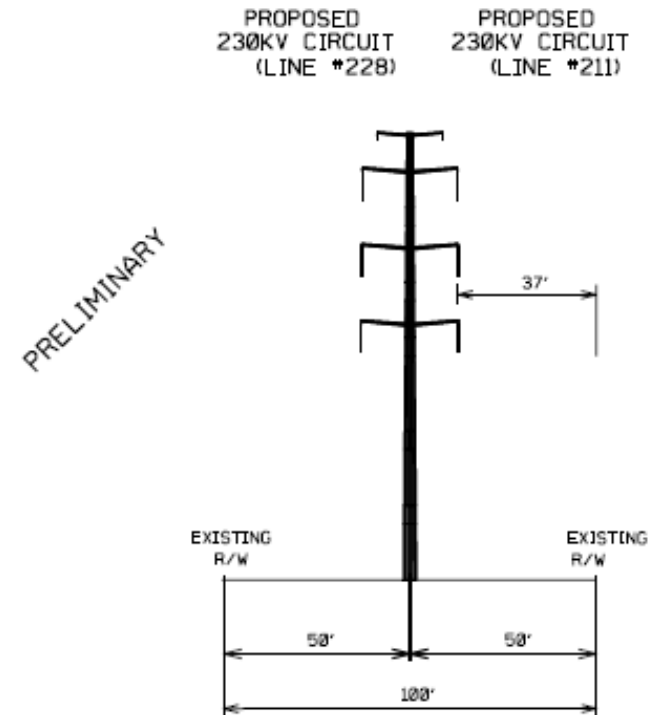


EXISTING CONFIGURATION

TYPICAL RIGHT OF WAY LOOKING TOWARD HOPEWELL

Heights range: 106' – 139'

STRUCTURE NUMBER 43 TO 68



PROPOSED CONFIGURATION

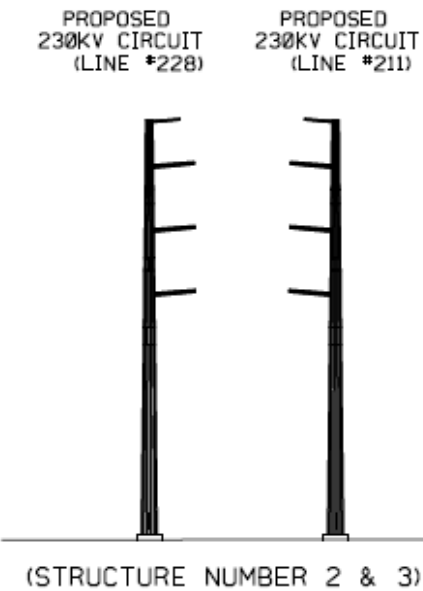
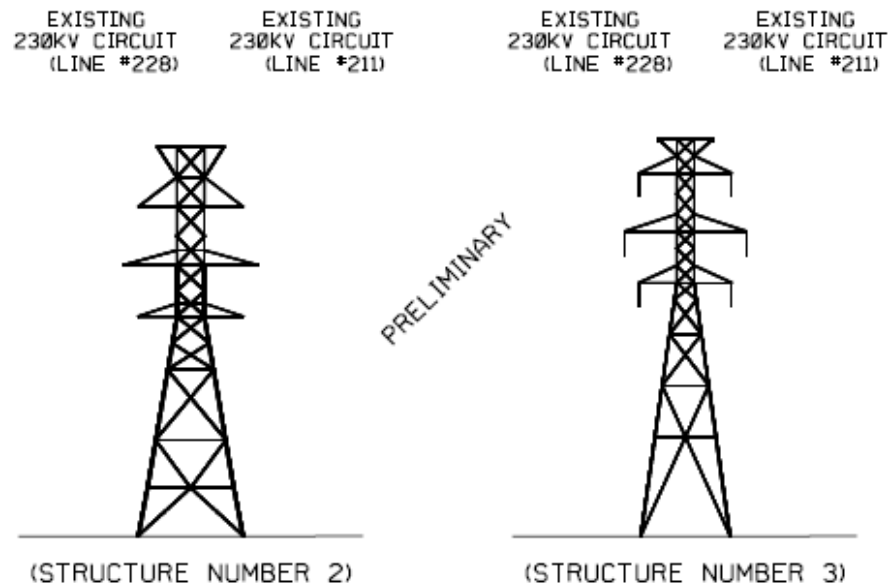
TYPICAL RIGHT OF WAY LOOKING TOWARD HOPEWELL

Proposed Heights range: 110' – 135'

*Subject to final engineering

STRUCTURE NUMBER 2 & 3

STRUCTURE NUMBER 2 & 3



EXISTING CONFIGURATION
TYPICAL VIEW LOOKING TOWARD HOPEWELL

Heights range: 114' – 116'

PROPOSED CONFIGURATION
TYPICAL VIEW LOOKING TOWARD HOPEWELL

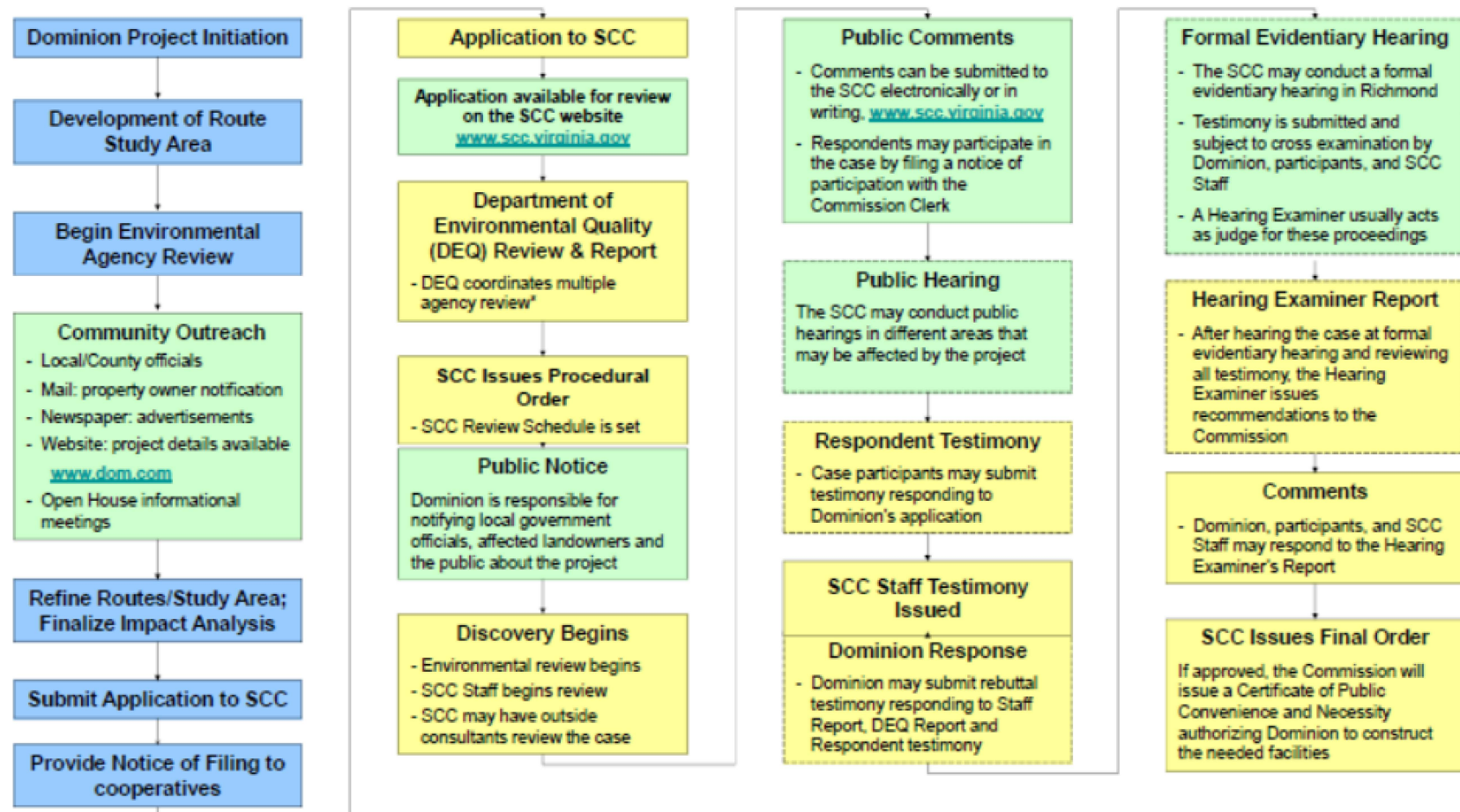
Proposed Height: 120'

*Subject to final engineering

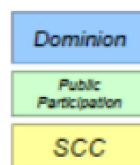
The Transmission Line Approval Process

Virginia's State Corporation Commission (SCC) has regulatory authority over all electric utilities and requires that all transmission facilities at or above 138 kV be certified by the SCC.

The SCC determines the need for a proposed line and the route. Among other elements considered, the SCC must determine that the selected route reasonably minimizes the impact on scenic assets, historic districts, and the environment.



*DEQ coordinated agency review includes: Virginia Marine Resources Commission, Department of Conservation & Recreation, Department of Game & Inland Fisheries, Department of Historic Resources and others.



SCC Approval Process Time May Vary

How to comment to the SCC: Public comments related to Commission cases are accepted for a limited time. Cases for which comments are currently being accepted by the SCC are listed in the Public Comments/Notices page.
<http://www.scc.virginia.gov/case/publicComments.aspx>

This is a conceptual diagram to illustrate the certification process and is not intended to be a legal description.

Public Safety & Access

- Encroachments
 - Primarily unauthorized sheds
 - Dominion Energy will take customary approach to fences in right of way
- Engagement Plan
 - Grassroots education on encroachments
 - Limited funds for removal/relocation of non-conforming encroachments
- Danger Tree Clearing

Next Steps

- March 2018 Meet with local elected officials
Project website launched; Dedicated email/phone open
- April 2018 Host two public open houses (Hopewell/PGC, Chesterfield)
- May 2018 File Application with State Corp. Commission (SCC)
- Q3 – Q4 2018 Procedural Order Issued, Public Hearing Scheduled
- ~Q1 2019 Requested date for SCC approval
- December 2020 Projected In-Service Date

Questions

Dedicated Project Page:

www.dominionenergy.com/ChesterfieldHopewell

888-291-0190

Powerline@dominionenergy.com