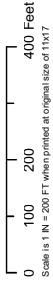


DESKTOP WETLAND REVIEW MAP
 Chesterfield-Lanexa Corridor
 Lines #92, #192, #217, #287, and #4219 Partial Rebuild
 Charles City, Henrico, and New Kent Counties, Virginia

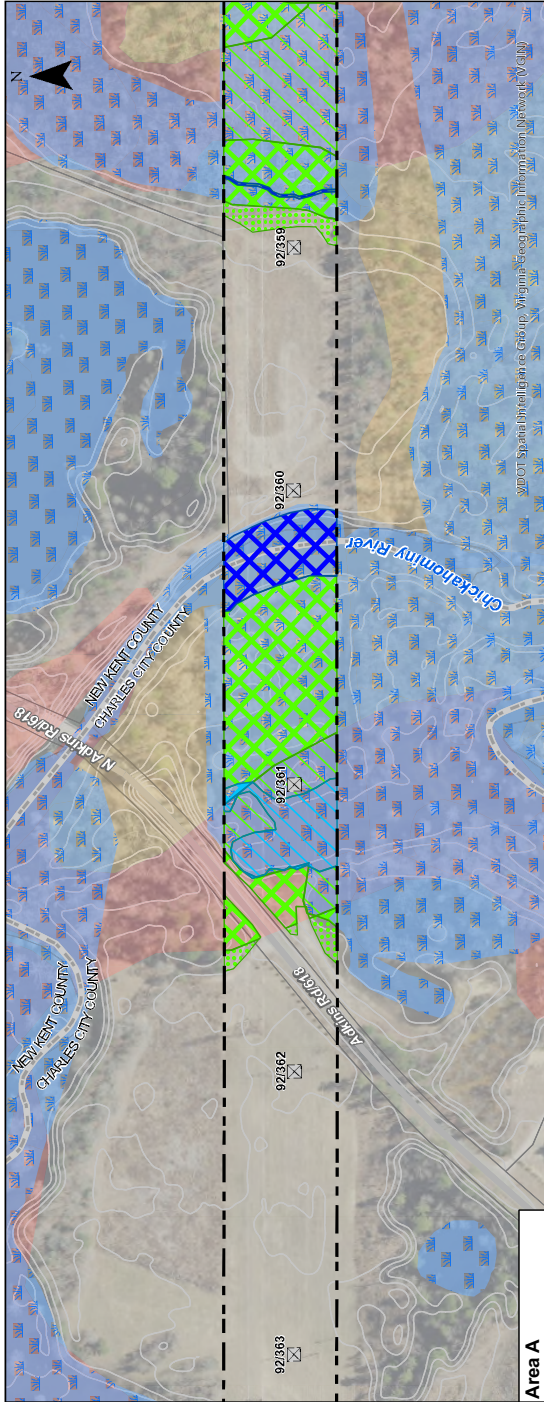
Client:
 Dominion Energy Virginia

C2 Env Project: 0368
 Prepared By: ZTW
 Date: 07/29/25

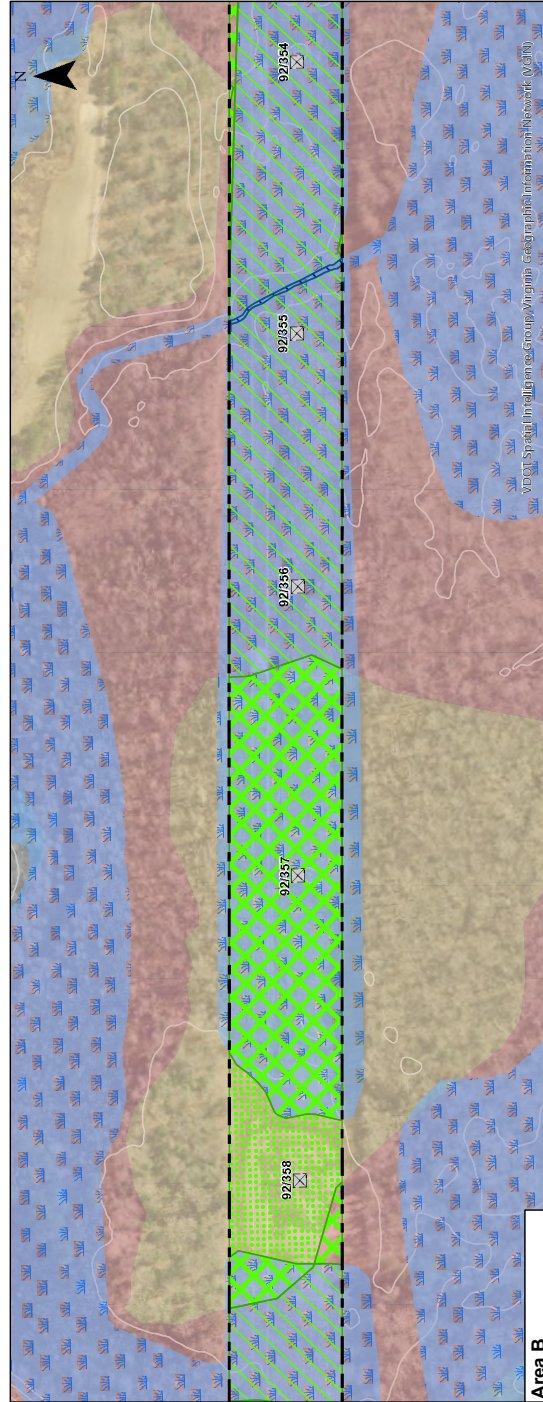


SITE DATA

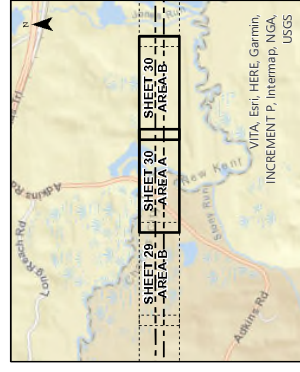
- Existing Structure Location
- Wetland Probability
 - High Stream Channel
 - High PFM/SS Wetland
 - High PUB Open Water
 - High LUB Open Water
 - High Jurisdictional Ditch
 - High PFM/SS
 - Medium High Stream Channel
 - Medium High PFM/SS
 - Medium High PUB Open Water
 - Medium High LUB Open Water
- Medium High Jurisdictional Ditch
- Medium Stream Channel
- Medium PFM/SS Wetland
- Medium LUB Open Water
- Medium PUB Open Water
- Medium Jurisdictional Ditch
- USGS NHD Stream Centerline
- NWI Limits
- Hydric Soils
- Partially Hydric Soils
- Nonhydric Soils
- Parcel Boundary
- Existing 1 FT Contour



Area A



Area B



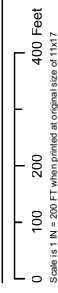
VITA, Esri, HERE, Garmin,
 INCREMENT P, Intermap, NGA,
 USGS



SHEET 30 OF 40

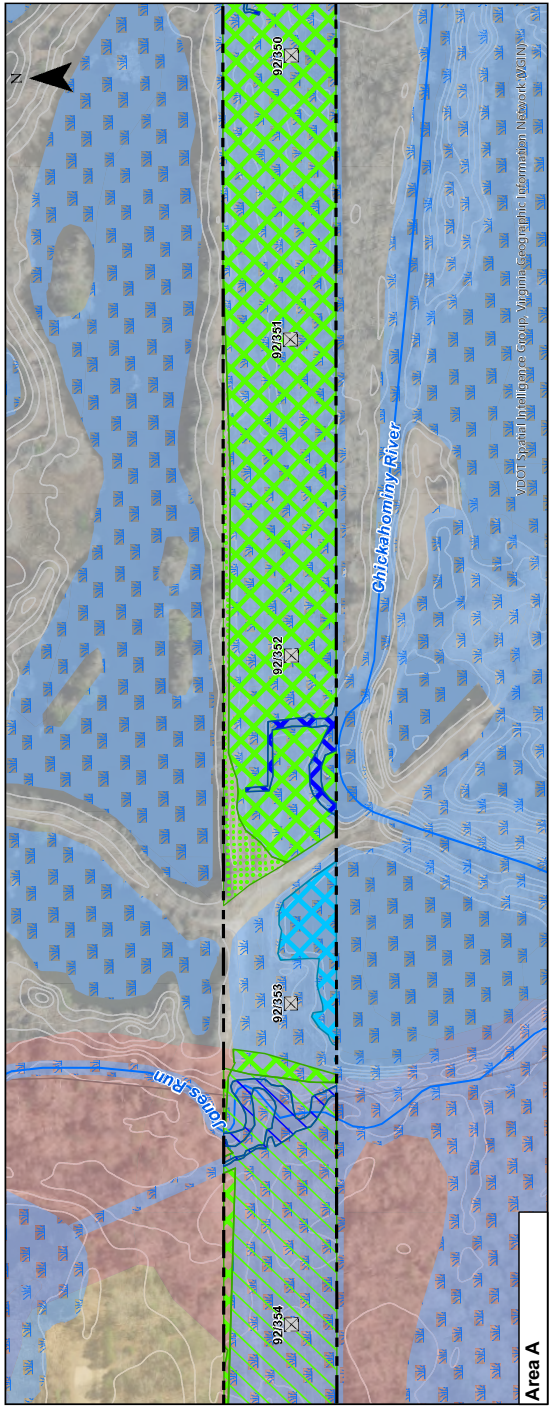
DESKTOP WETLAND REVIEW MAP
 Chesterfield-Lanexa Corridor
 Lines #92, #192, #217, #287, and #42129 Partial Rebuild
 Charles City, Henrico, and New Kent Counties, Virginia
 Client:
 Dominion Energy Virginia

C2 Env Project: 0368
 Prepared By: ZTW
 Date: 07/29/25

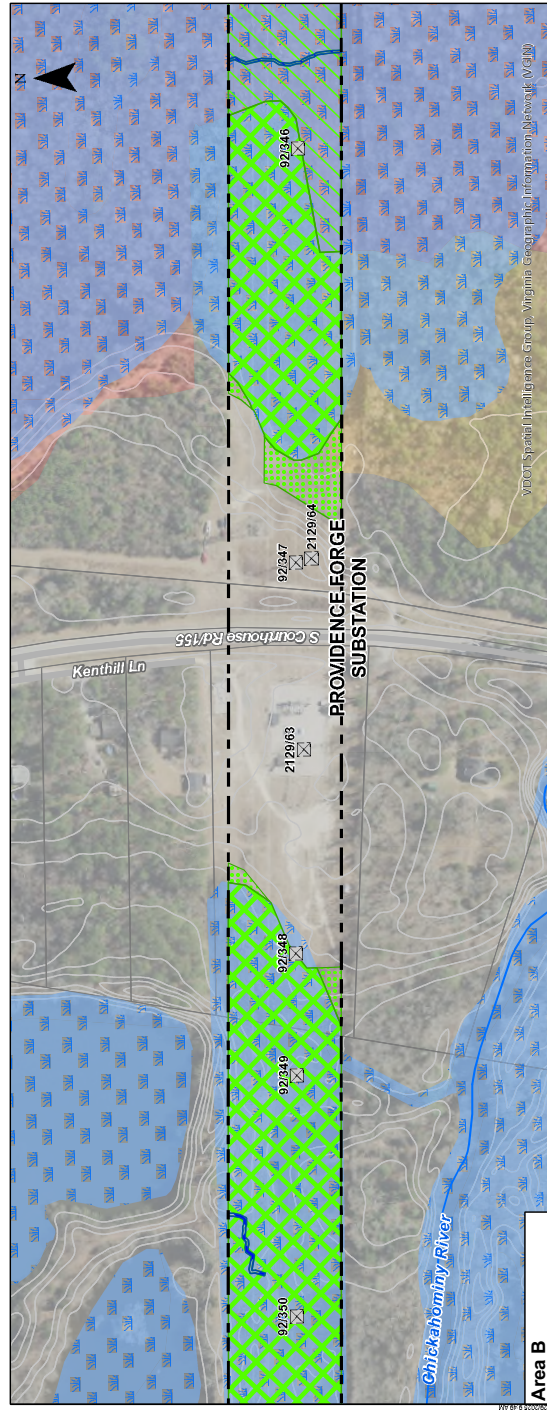


SITE DATA

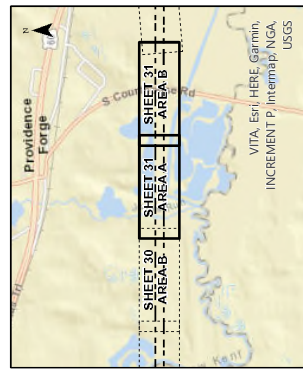
- Existing Structure Location
- Wetland Probability
- High Stream Channel
- High PEMFSS Wetland
- High PUB Open Water
- High JUR Open Water
- High JUR Stream Centerline
- NWI Limits
- Partially Hydric Soils
- Medium High PEMFSS
- Medium High PUB Wetland
- Medium High PUB Open Water
- Medium High PUB Open Water
- Medium High PUB Open Water
- Medium Stream Channel
- Medium PEMFSS Wetland
- Medium PUB Open Water
- Medium JUR Open Water
- Medium JUR Stream Centerline
- NWI Limits
- Partially Hydric Soils
- Medium High PEMFSS
- Medium High PUB Wetland
- Medium High PUB Open Water
- Existing 1 FT Contour



Area A



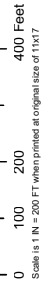
Area B



DESKTOP WETLAND REVIEW MAP
 Chesterfield-Lanexa Corridor
 Lines #92, #92, #217, #287, and #2129 Partial Rebuild
 Charles City, Henrico, and New Kent Counties, Virginia

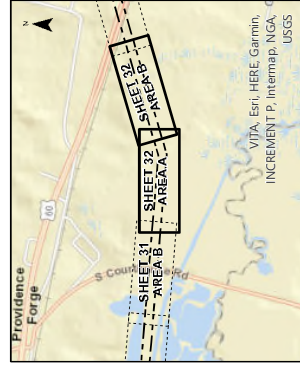
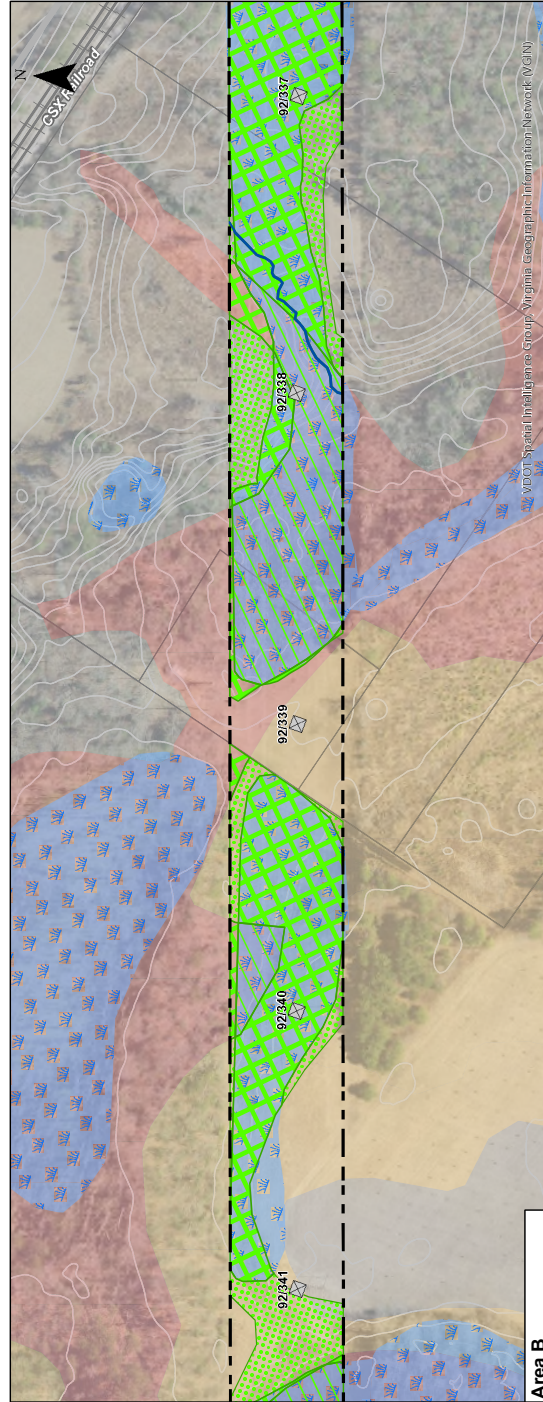
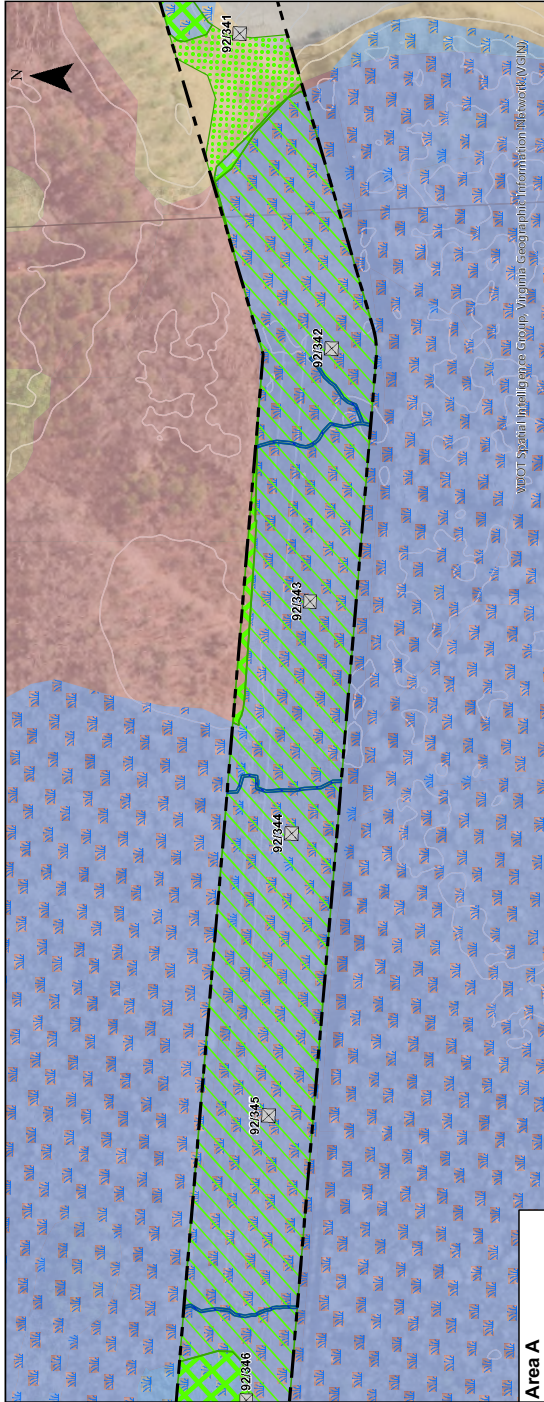
Client:
 Dominion Energy Virginia

C2 Env Project: 0368
 Prepared By: ZTW
 Date: 07/29/25



SITE DATA

- Existing Structure Location
- Wetland Probability
- High Stream Channel
- High PUB Open Water
- High Jurisdictional Ditch
- Medium High Stream Channel
- Medium High PUB Open Water
- Medium High LUB Open Water
- Medium High Jurisdictional Ditch
- Medium Stream Channel
- Medium PFMSS Wetland
- Medium LUB Open Water
- Medium PUB Open Water
- Medium Jurisdictional Ditch
- NWD Stream Centerline
- NW Limits
- Hydraulic Soils
- Partially Hydric Soils
- Nonhydric Soils
- Parcel Boundary
- Existing 1 FT Contour

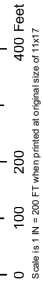


SHEET 32 OF 40

DESKTOP WETLAND REVIEW MAP

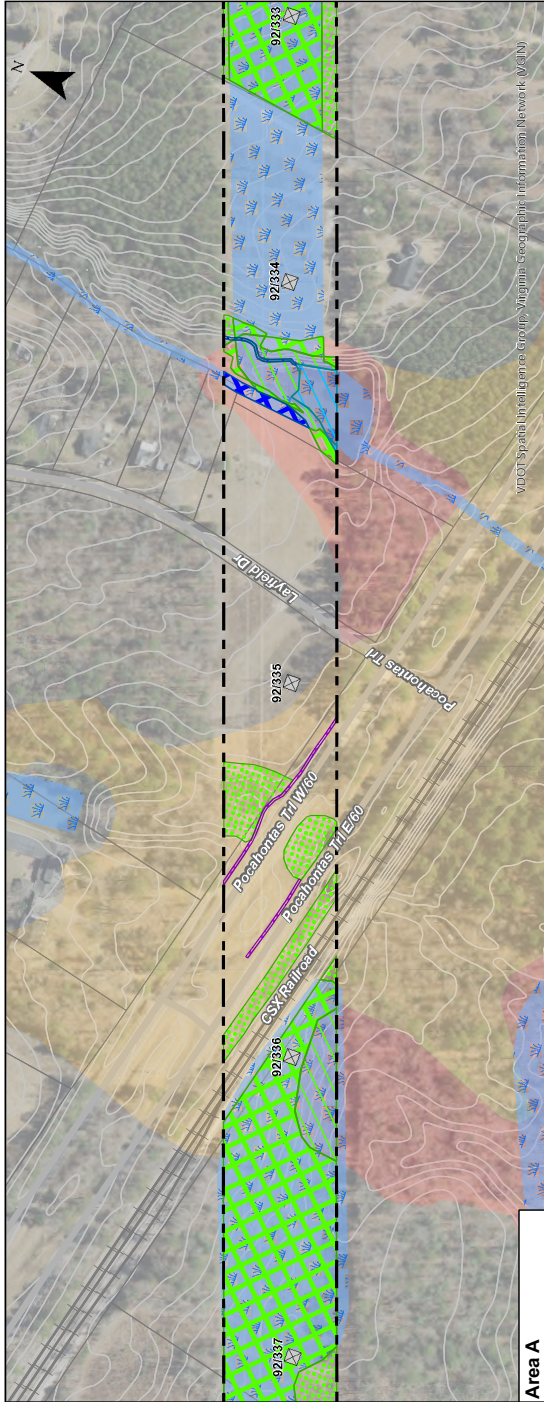
Chesterfield-Lanexa Corridor
Lines #92, #192, #217, #287, and #2129 Partial Rebuild
Charles City, Henrico, and New Kent Counties, Virginia
Client:
Dominion Energy Virginia

C2 Env Project: 0368
Prepared By: ZTW
Date: 07/29/25

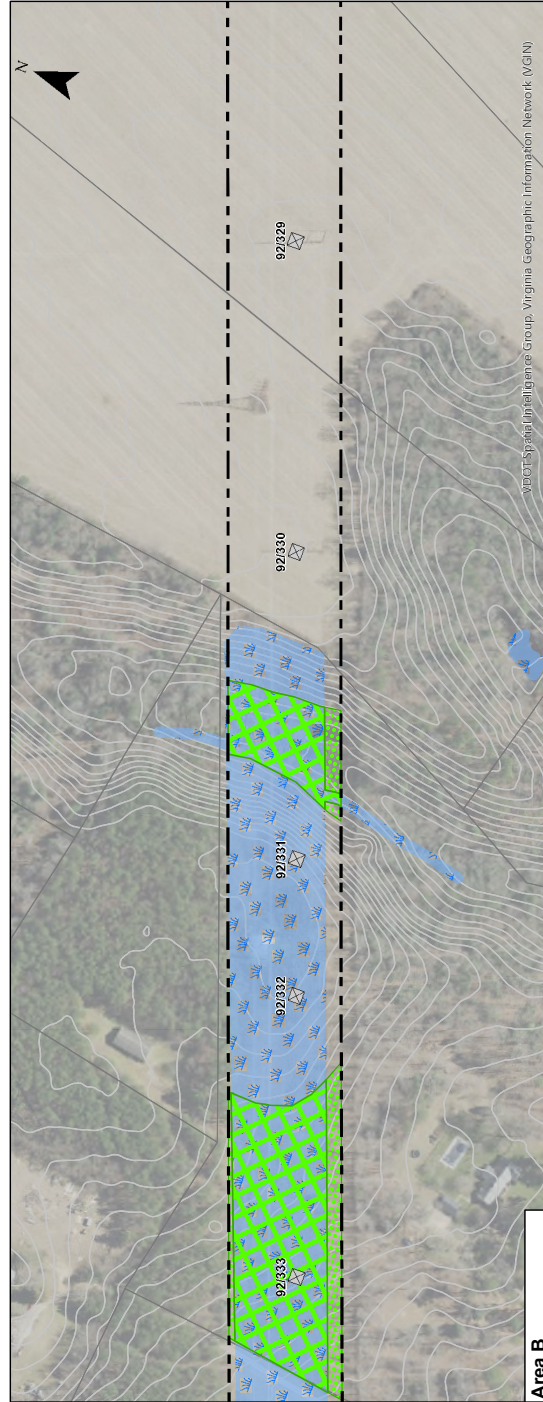


SITE DATA

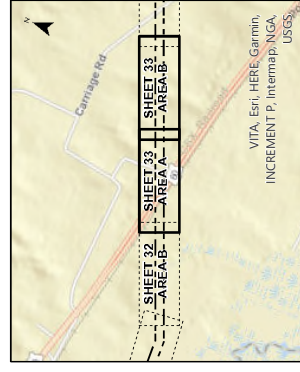
- Existing Structure Location
- Wetland Probability**
 - High Stream Channel
 - High PEMFSS Wetland
 - High PUB Open Water
 - High JUR Open Water
 - High JUR Jurisdictional Ditch
 - Medium High Stream Channel
 - Medium High PEMFSS
 - Medium High PHO Wetland
 - Medium High PUB Open Water
 - Medium High LUB Open Water
 - Medium High Jurisdictional Ditch
 - Medium Stream Channel
 - Medium PEMFSS Wetland
 - Medium LUB Open Water
 - Medium JUR Open Water
 - USCS NHD Stream Centerline
 - NWI Limits
 - Hydraulic Soils
 - Partially Hydric Soils
 - Nonhydric Soils
 - Parcel Boundary
 - Existing 1 FT Contour



Area A



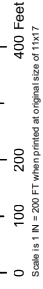
Area B



DESKTOP WETLAND REVIEW MAP
 Chesterfield-Lanexa Corridor
 Lines #92, #192, #217, #287, and #42129 Partial Rebuild
 Charles City, Henrico, and New Kent Counties, Virginia

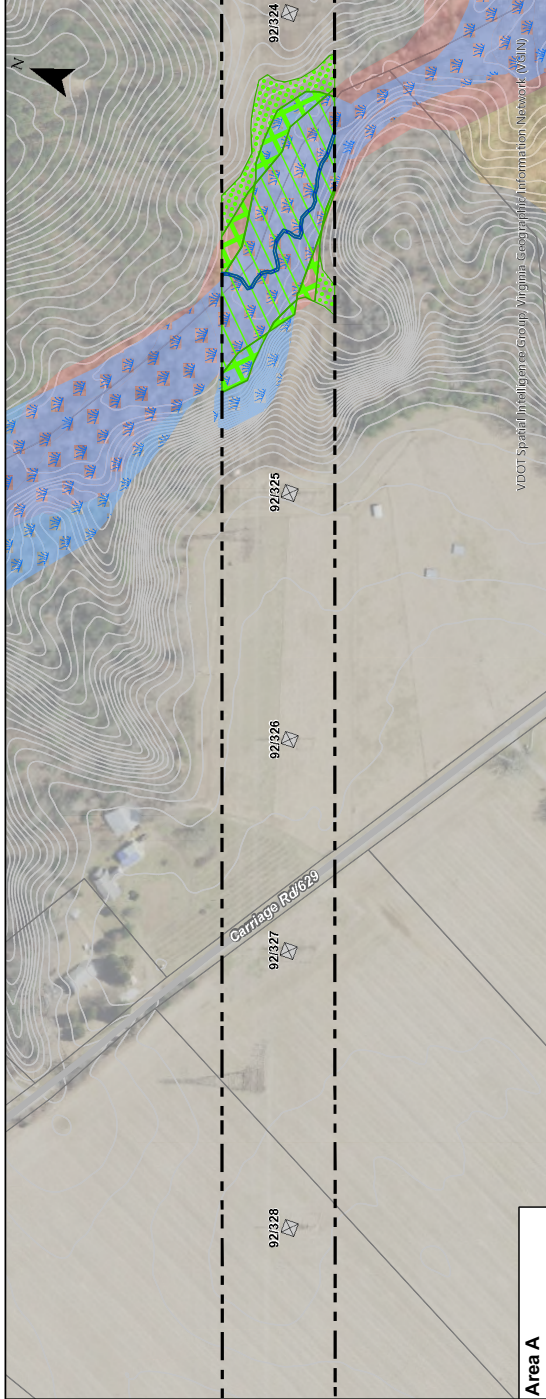
Client:
 Dominion Energy Virginia

C2 Env Project: 0368
 Prepared By: ZTW
 Date: 07/29/25

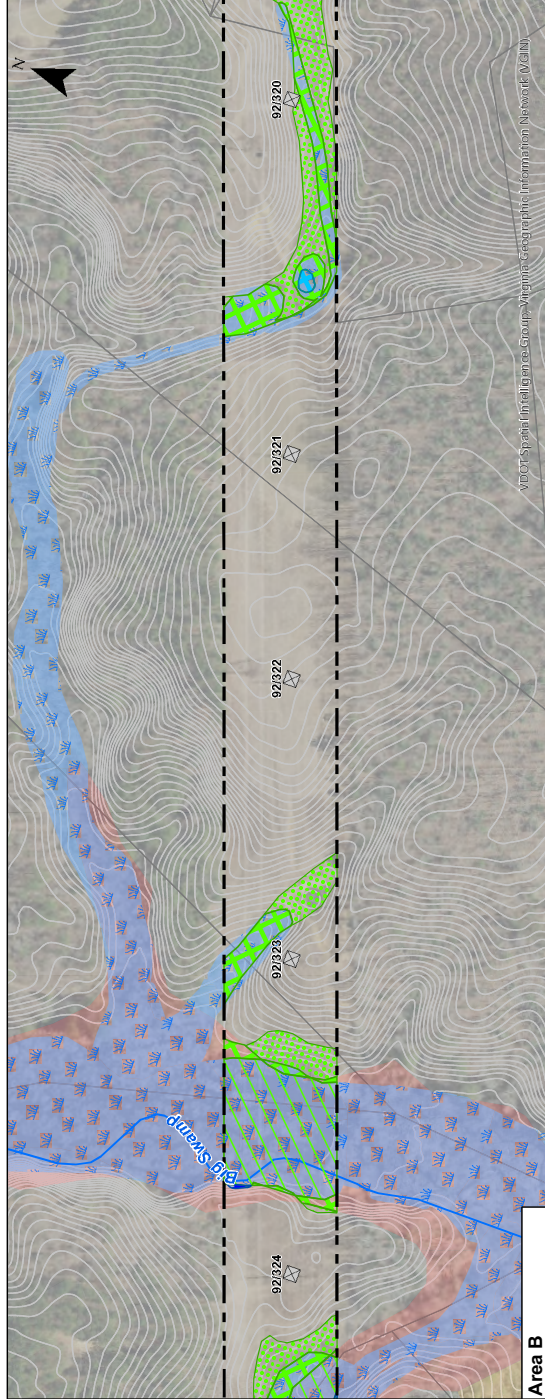


SITE DATA

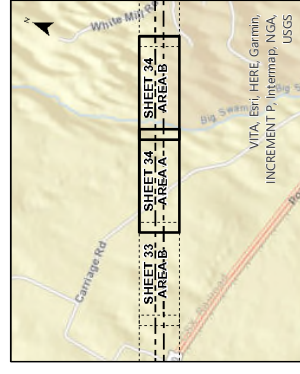
- Project Area
- Existing Structure Location
- Wetland Probability**
 - High Stream Channel
 - High PFM/SS Wetland
 - High PUB Open Water
 - High LUB Open Water
 - High Jurisdictional Ditch
 - Medium High Stream Channel
 - Medium High PFM/SS Wetland
 - Medium High PUB Open Water
 - Medium High LUB Open Water
- Medium High Jurisdictional Ditch
- Medium Stream Channel
- Medium PFM/SS Wetland
- Medium LUB Open Water
- Medium PUB Open Water
- Medium Jurisdictional Ditch
- USGS NHD Stream Centerline
- NWI Limits
- Hydric Soils
- Partially Hydric Soils
- Nonhydric Soils
- Parcel Boundary
- Existing 1 FT Contour



Area A



Area B

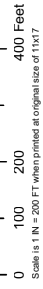


DESKTOP WETLAND REVIEW MAP

Chesterfield-Lanexa Corridor
 Lines #92, #192, #217, #287, and #429 Partial Rebuild
 Charles City, Henrico, and New Kent Counties, Virginia

Client:
 Dominion Energy Virginia

C2 Env Project: 0368
 Prepared By: ZTW
 Date: 07/29/25

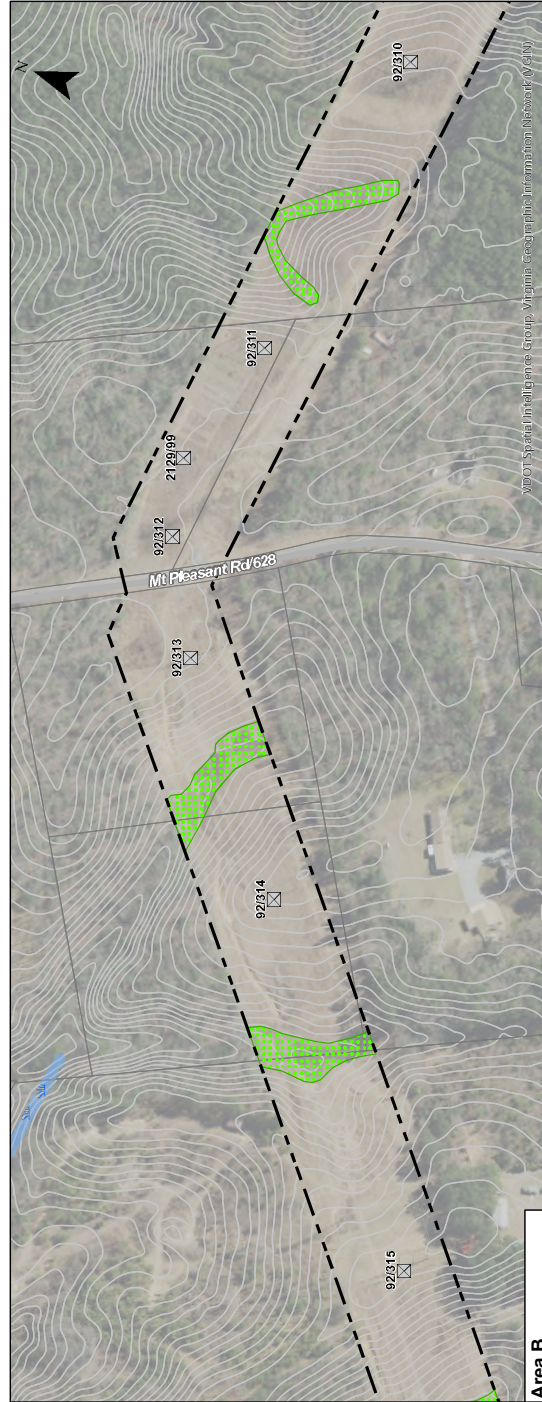


SITE DATA

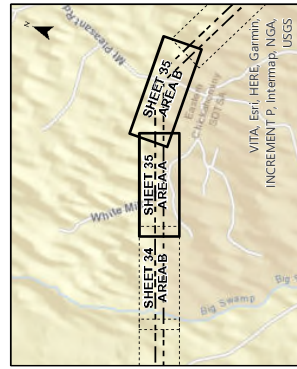
- Existing Structure Location
- Wetland Probability
 - High Stream Channel
 - High PFM/SS Wetland
 - High PUB Open Water
 - High LUB Open Water
 - High Jurisdictional Ditch
 - Medium/High Stream Channel
 - Medium/High PFM/SS
 - Medium/High PUB Open Water
 - Medium/High LUB Open Water
- Medium/High Jurisdictional Ditch
- Medium Stream Channel
- Medium PFM/SS Wetland
- Medium LUB Open Water
- Medium PUB Open Water
- Medium Jurisdictional Ditch
- USGS NHD Stream Centerline
- NWI Limits
- Hydraulic Soils
- Partially Hydric Soils
- Nonhydric Soils
- Parcel Boundary
- Existing 1 FT Contour



Area A



Area B

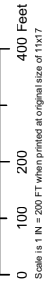


DESKTOP WETLAND REVIEW MAP

Chesterfield-Lanexa Corridor
Lines #92, #192, #217, #287, and #2129 Partial Rebuild
Charles City, Henrico, and New Kent Counties, Virginia

Client:
Dominion Energy Virginia

C2 Env Project: 0368
Prepared By: ZTW
Date: 07/29/25

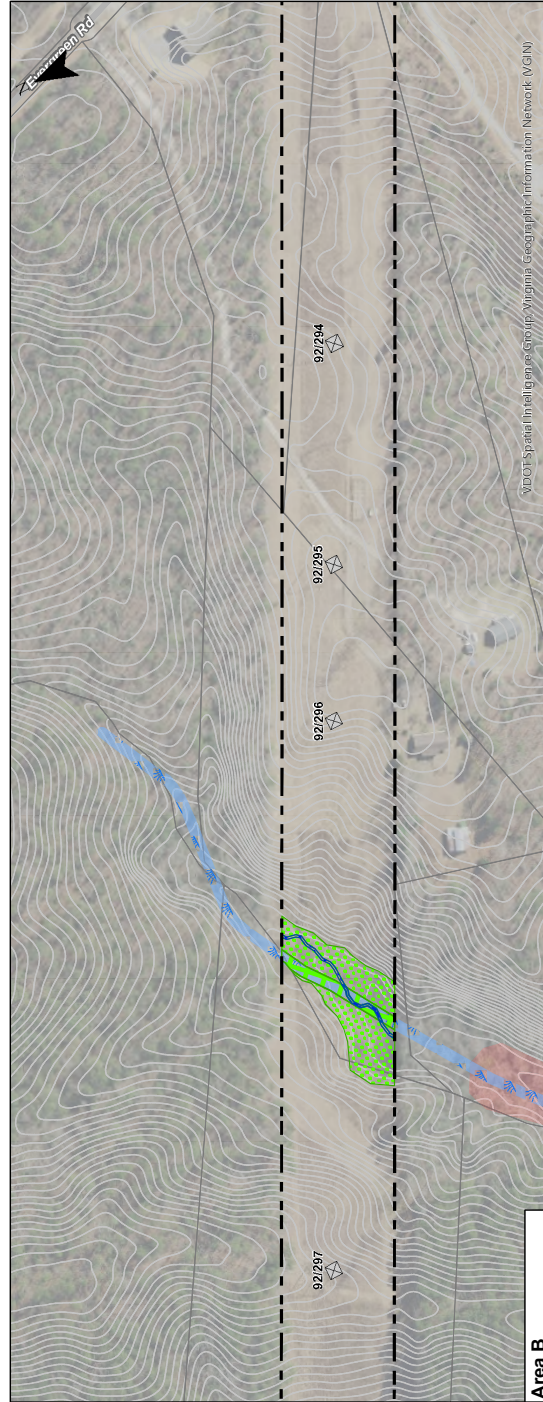


SITE DATA

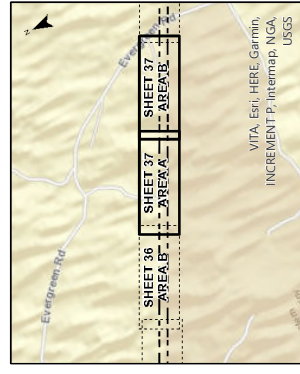
- Existing Structure Location
- Wetland Probability
 - High Stream Channel
 - High PEMFSS Wetland
 - High PUB Open Water
 - High JUR Open Water
 - High JUR Stream Channel
 - Medium High Stream Channel
 - Medium High PEMFSS
 - Medium High PUB Open Water
 - Medium High JUR Open Water
- Medium High Jurisdictional Ditch
- Medium Stream Channel
- Medium PEMFSS Wetland
- Medium LUB Open Water
- Medium PUB Open Water
- Medium Jurisdictional Ditch
- USCS NHD Stream Centerline
- NWI Limits
- Hydric Soils
- Partially Hydric Soils
- Nonhydric Soils
- Parcel Boundary
- Existing 1 FT Contour



Area A



Area B

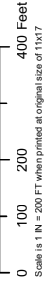


SHEET 37 OF 40

DESKTOP WETLAND REVIEW MAP
 Chesterfield-Lanexa Corridor
 Lines #92, #192, #287, and #219 Partial Rebuild
 Charles City, Henrico, and New Kent Counties, Virginia

Client:
 Dominion Energy Virginia

C2 Env Project: 0368
 Prepared By: ZTW
 Date: 07/29/25

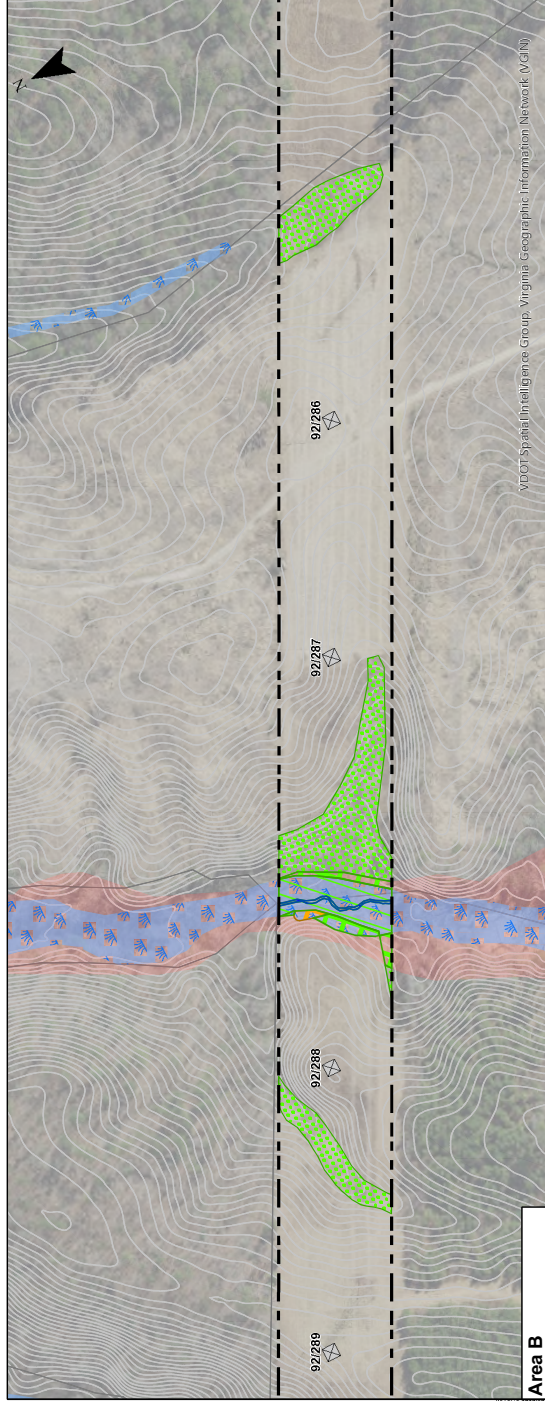


SITE DATA

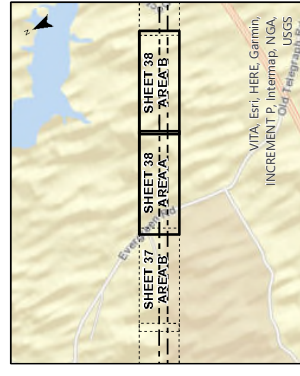
- Existing Structure Location
- Wetland Probability**
- High Stream Channel
- High PEMFSS Wetland
- High PUB Open Water
- High LUB Open Water
- High Jurisdictional Ditch
- Medium High Stream Channel
- Medium High PEMFSS
- Medium High PUB Open Water
- Medium High LUB Open Water
- Medium High Jurisdictional Ditch
- Medium Stream Channel
- Medium PEMFSS Wetland
- Medium LUB Open Water
- Medium PUB Open Water
- Medium Jurisdictional Ditch
- USCS NHD Stream Centerline
- NWI Limits
- Hydric Soils
- Partially Hydric Soils
- Nonhydric Soils
- Parcel Boundary
- Existing 1 FT Contour



Area A



Area B



SHEET 38 OF 40