

# THORNBURG-FREDERICKSBURG

## 500 & 230 kV Rebuild Project

### Typical Existing Structure

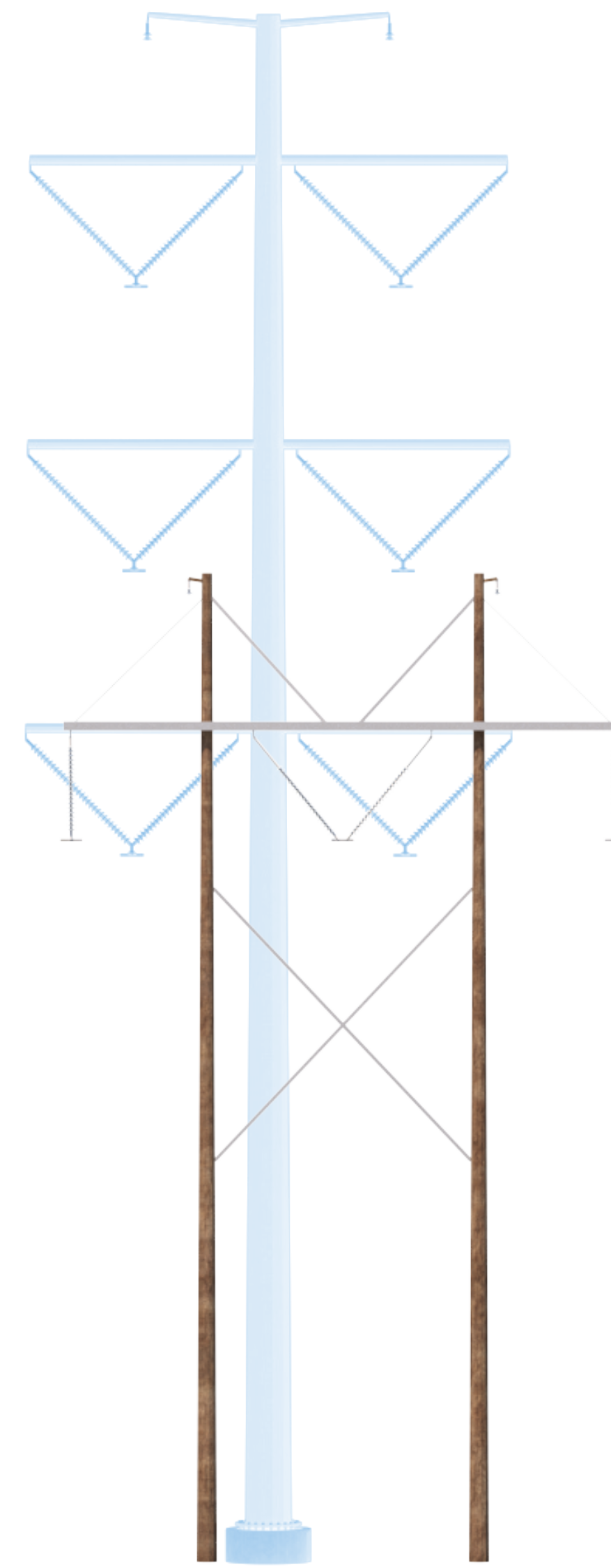
Visualization is for discussion purposes only.  
Final design is subject to change pending public,  
engineering, and regulatory review.



#### Existing H-Frame

Wood

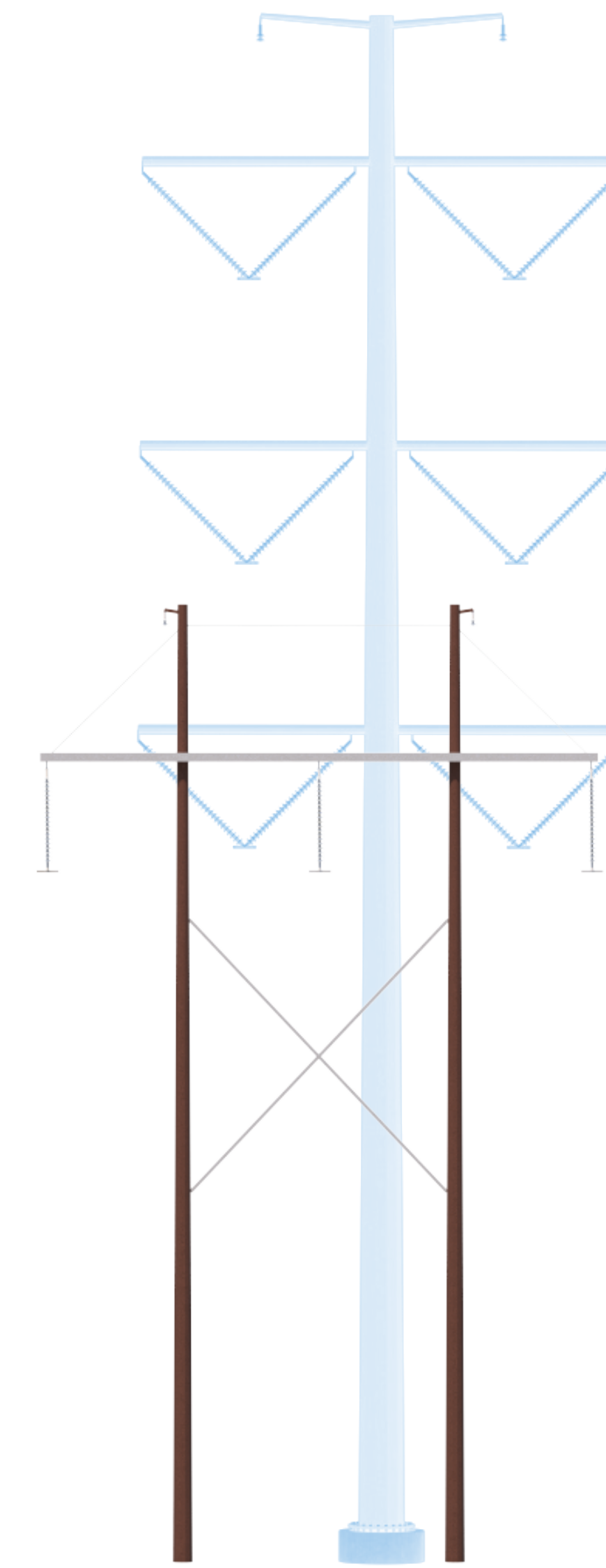
**71' Tall**  
on average



#### Existing H-Frame

Weathering Steel

**65' Tall**  
on average



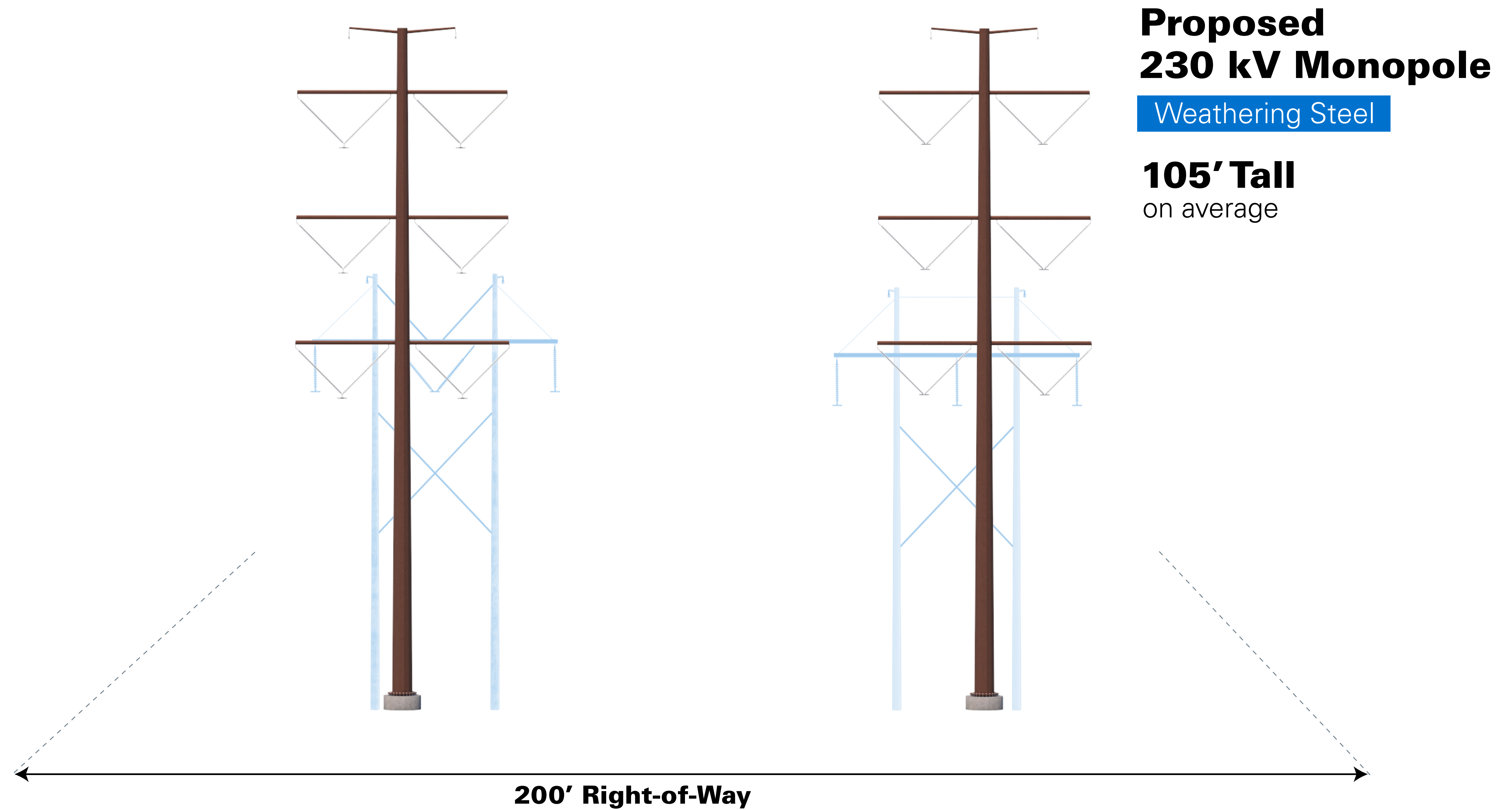
200' Right-of-Way

# THORNBURG-FREDERICKSBURG

500 & 230 kV Rebuild Project

## Typical Proposed Structure

Visualization is for discussion purposes only.  
Final design is subject to change pending public,  
engineering, and regulatory review.

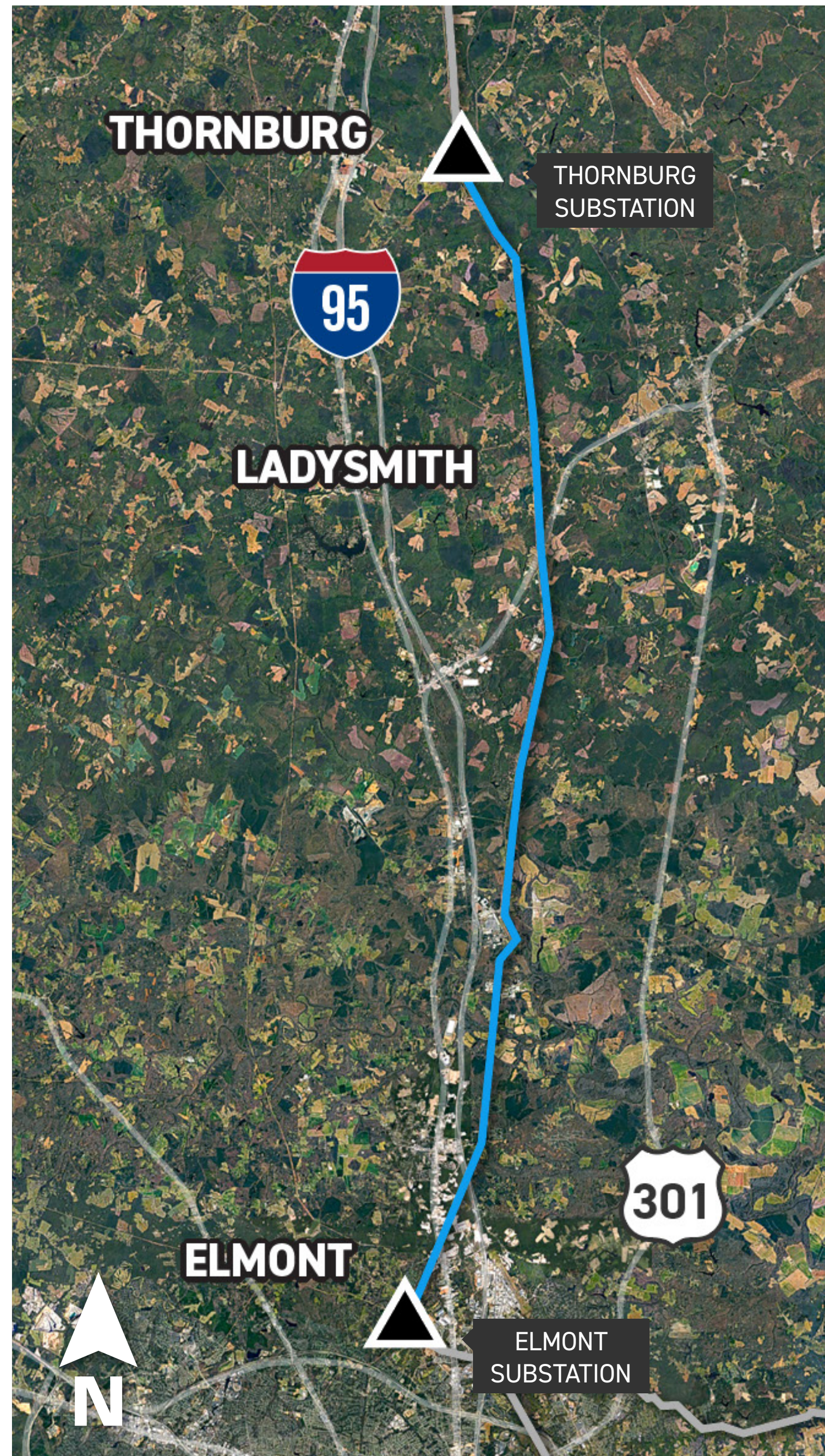


# ELMONT- THORNBURG

230 kV Rebuild Project

## Typical Existing Structure

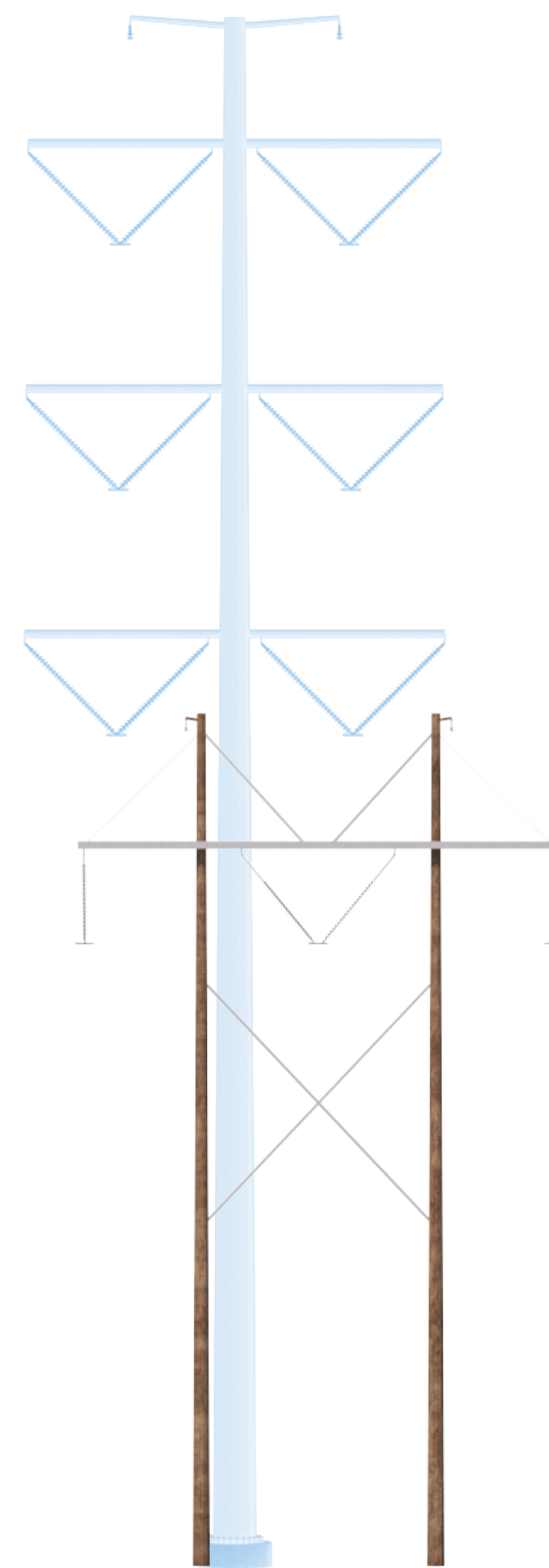
Visualization is for discussion purposes only.  
Final design is subject to change pending public,  
engineering, and regulatory review.



### Existing H-Frame

Wood

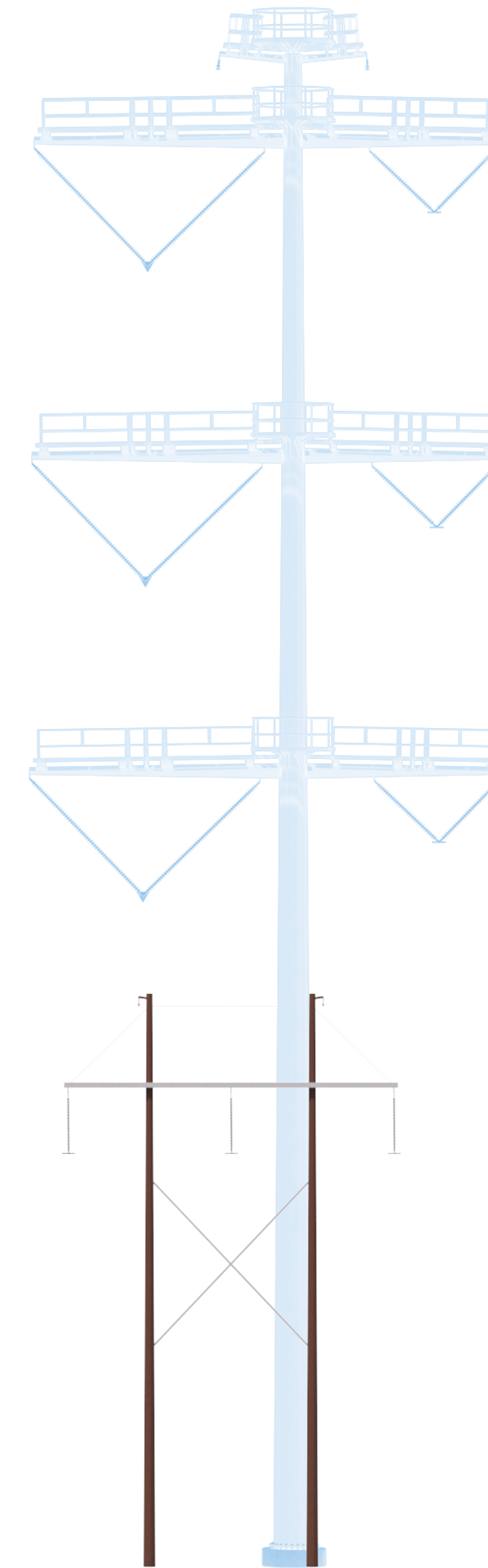
**71' Tall**  
on average



### Existing H-Frame

Weathering Steel

**65' Tall**  
on average



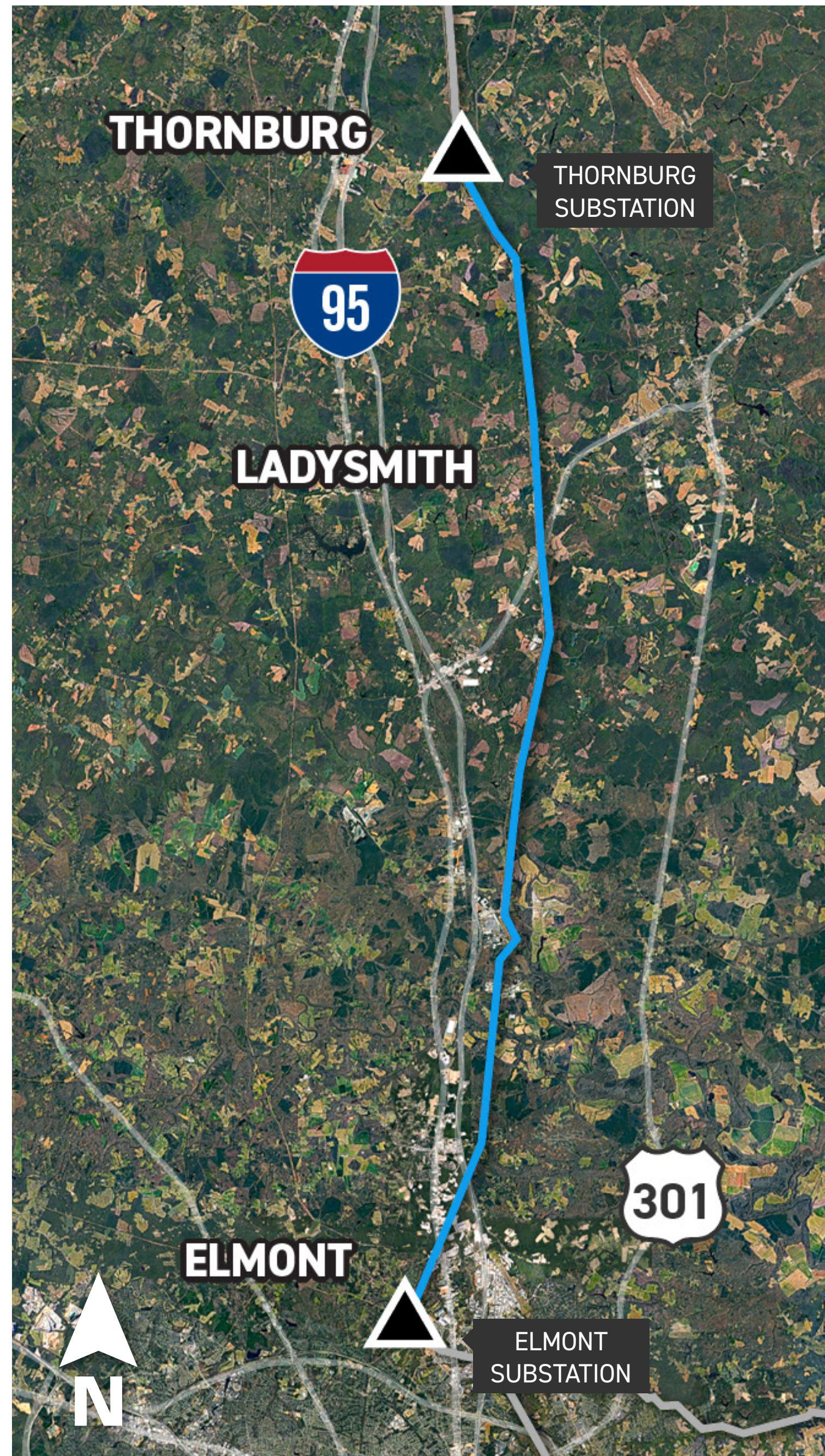
200' Right-of-Way

# ELMONT- THORNBURG

230 kV Rebuild Project

## Typical Proposed Structure

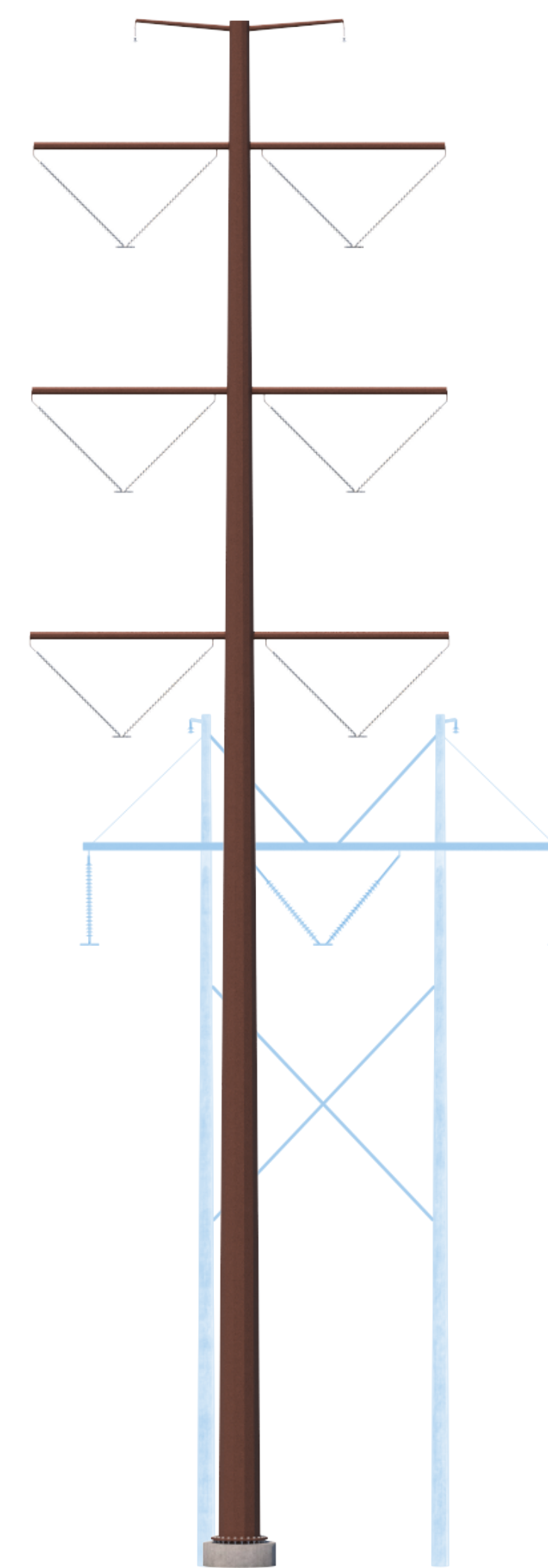
Visualization is for discussion purposes only.  
Final design is subject to change pending public,  
engineering, and regulatory review.



### Proposed 230 kV Monopole

Weathering Steel

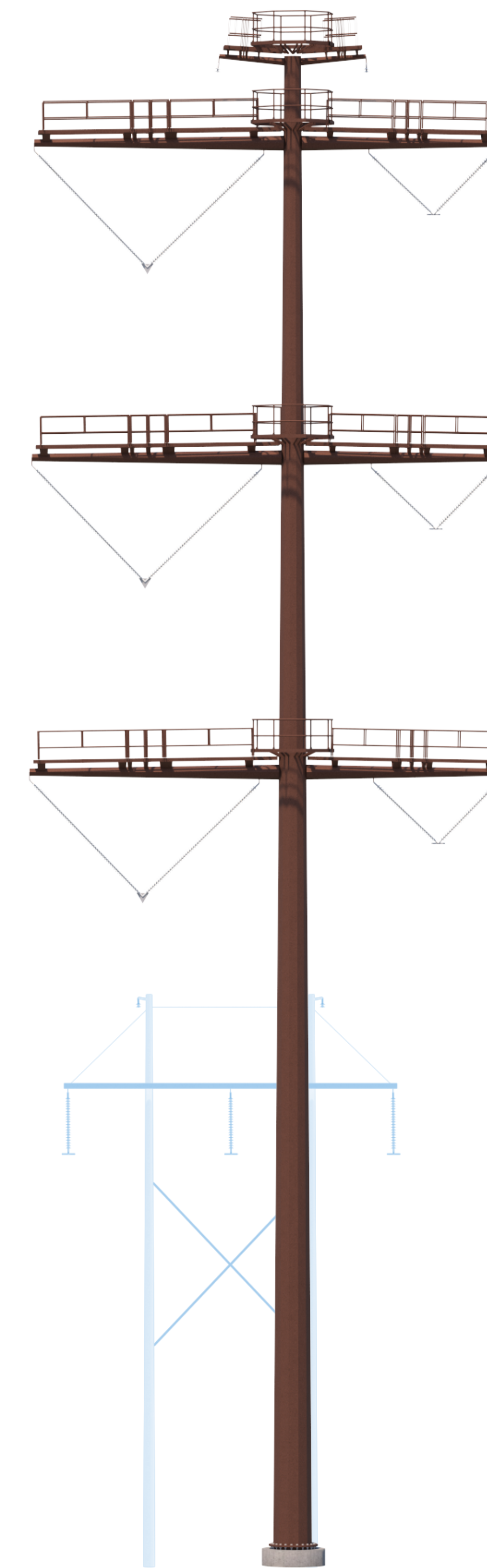
**125' Tall**  
on average



### Proposed 500 - 230 kV Monopole

Weathering Steel

**180' Tall**  
on average



200' Right-of-Way