

**Viewpoint 07** - Shreve Road - Looking Southeast toward Substation - ***Proposed View (10 Year Growth)***

For on-screen display:  
Scale bar to be 4 inches (101.6 mm) wide  
Viewing distance 19.7 inches (50 cm)



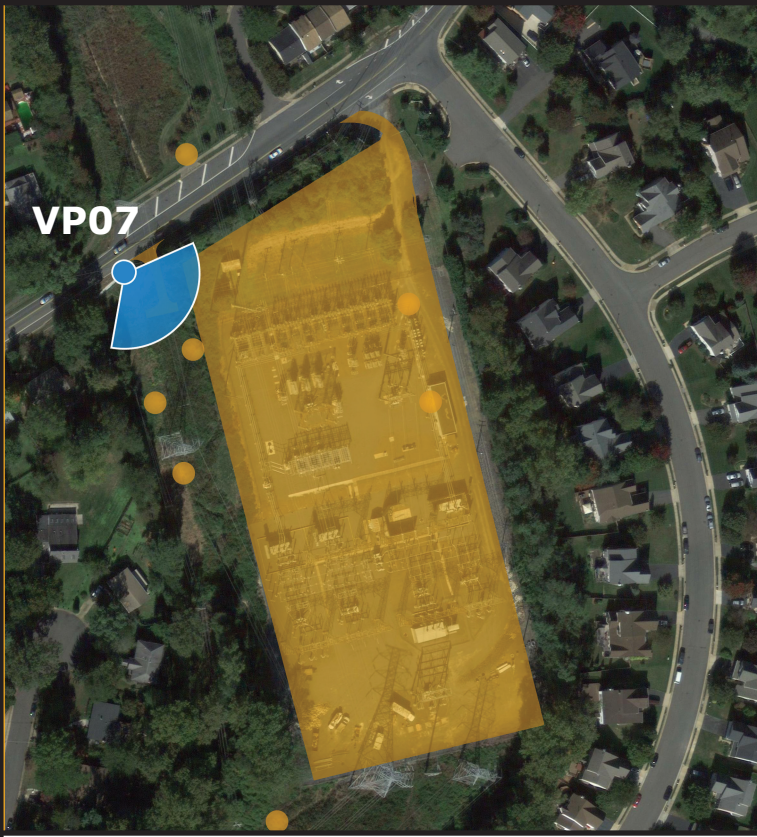
**Idylwood Substation**

**Viewpoint 07**

Shreve Road  
Looking Southeast toward Substation  
Falls Church, VA 22043

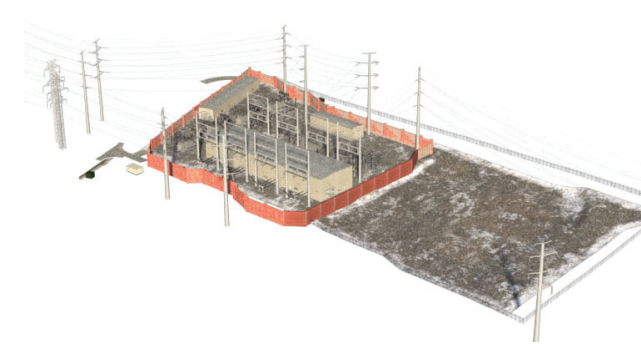
**Proposed View (10 Year Growth)**

- Viewpoint Location
- Proposed Substation

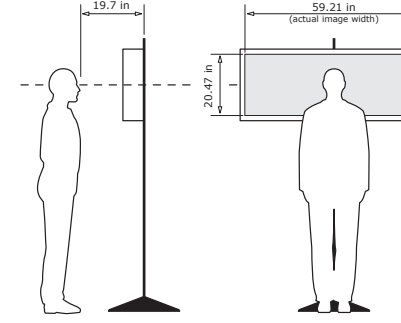


Easting Position (Virginia North Zone,NAD 83):11849903.6  
Northing Position (Virginia North Zone,NAD 83):7008454.5  
Elevation of Viewpoint Position (NAD 88 / ft): 374.5  
Height of Camera Above Ground (ft): 5.4  
Date of Photography: 30-Jan-2014 at 1:42 pm  
Orientation of View: SE  
Horizontal Field of View: 124°  
Vertical Field of View: 55°

3d Model



Correct Viewing of TrueView™  
Photosimulations



**NOTES:**

Viewpoint locations have been precision surveyed by

**Dewberry**  
Gainesville, Virginia  
13575 Heathcote Boulevard  
Suite 130  
Gainesville, VA 20155  
703-468-2211

Heights are above mean sea level.

No part of this photosimulation shall be altered in any way.  
Substation model subject to final engineering.

Photosimulation Created Using  
TrueView™ Technology  
(Patent No.: US 8,184,906 B2)

Provided by

**TRUESCAPE**  
Stakeholder engagement consultants

www.truescape.com