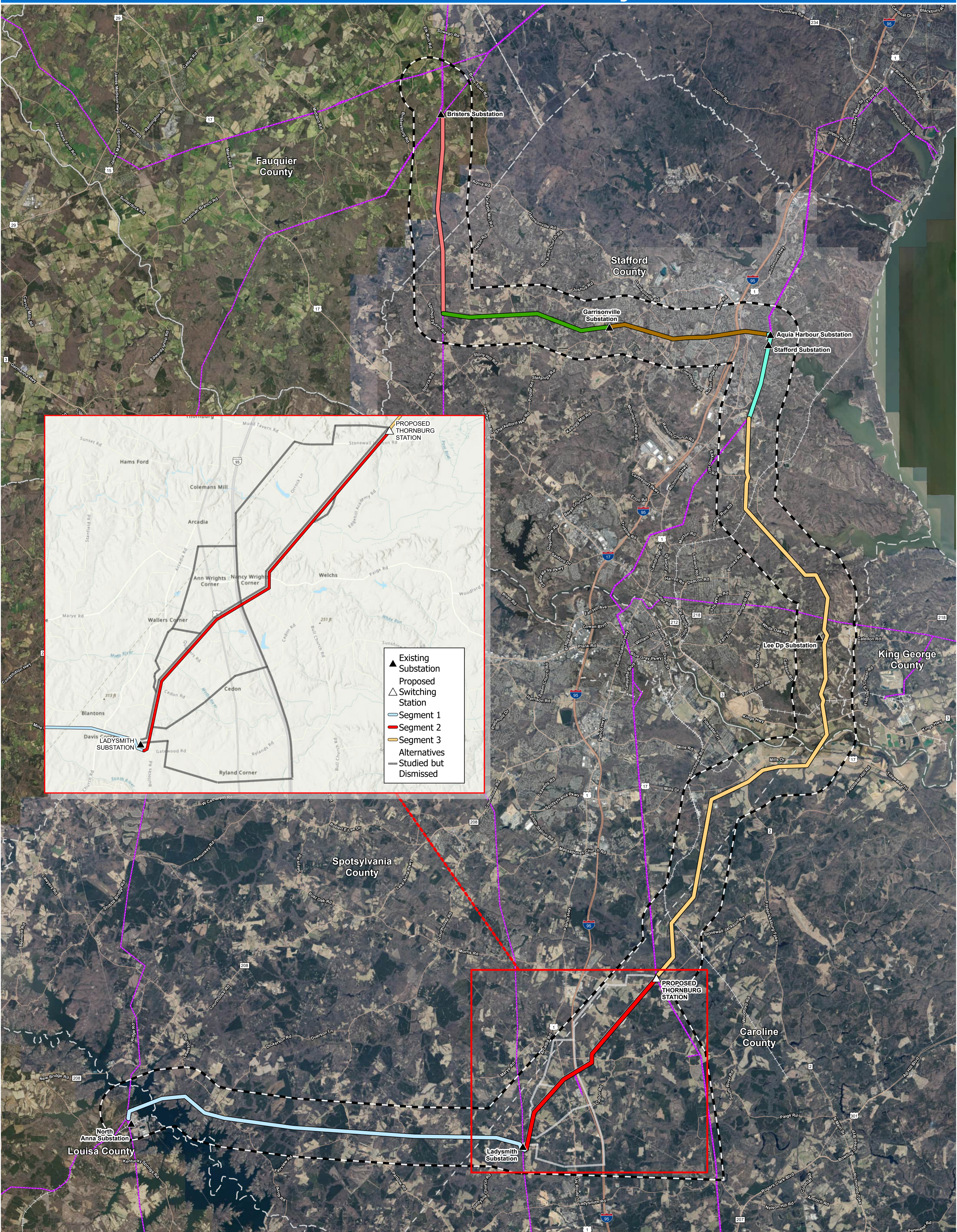


Project Overview

North Anna - Bristers 500 kV and 230 kV Electric Transmission Line Project



▲ Existing Substation
 ▲ Proposed Switching Station
 — Segment 1
 — Segment 2
 — Segment 3
 — Alternatives Studied but Dismissed

[Dashed Box] Study Area
Dominion Facilities
 ▲ Existing Substation
 ▲ Proposed Switching Station
 — Existing Dominion Transmission Line

Project Components
 — Segment 1
 — Segment 2
 — Segment 3
 — Segment 4
 — Segment 5
 — Segment 6
 — Segment 7
 — Alternatives Studied but Dismissed

Credits: Sources: Esri, U.S. Department of Commerce, Census Bureau, U.S. Department of Commerce (DOC), National Oceanic and Atmospheric Administration (NOAA), National Ocean Service (NOS), National Geodetic Survey (NGS), Esri, USGS, Virginia Geographic Information Network (VGIN), VGIN, Earthstar Geographics, Sources: Esri, TomTom, Garmin, FAO, NOAA, USGS, © OpenStreetMap contributors, and the GIS User Community, Esri, NASA, NGA, USGS, FEMA 04/30/2020

For Review Purposes Only - Routes Subject to Change