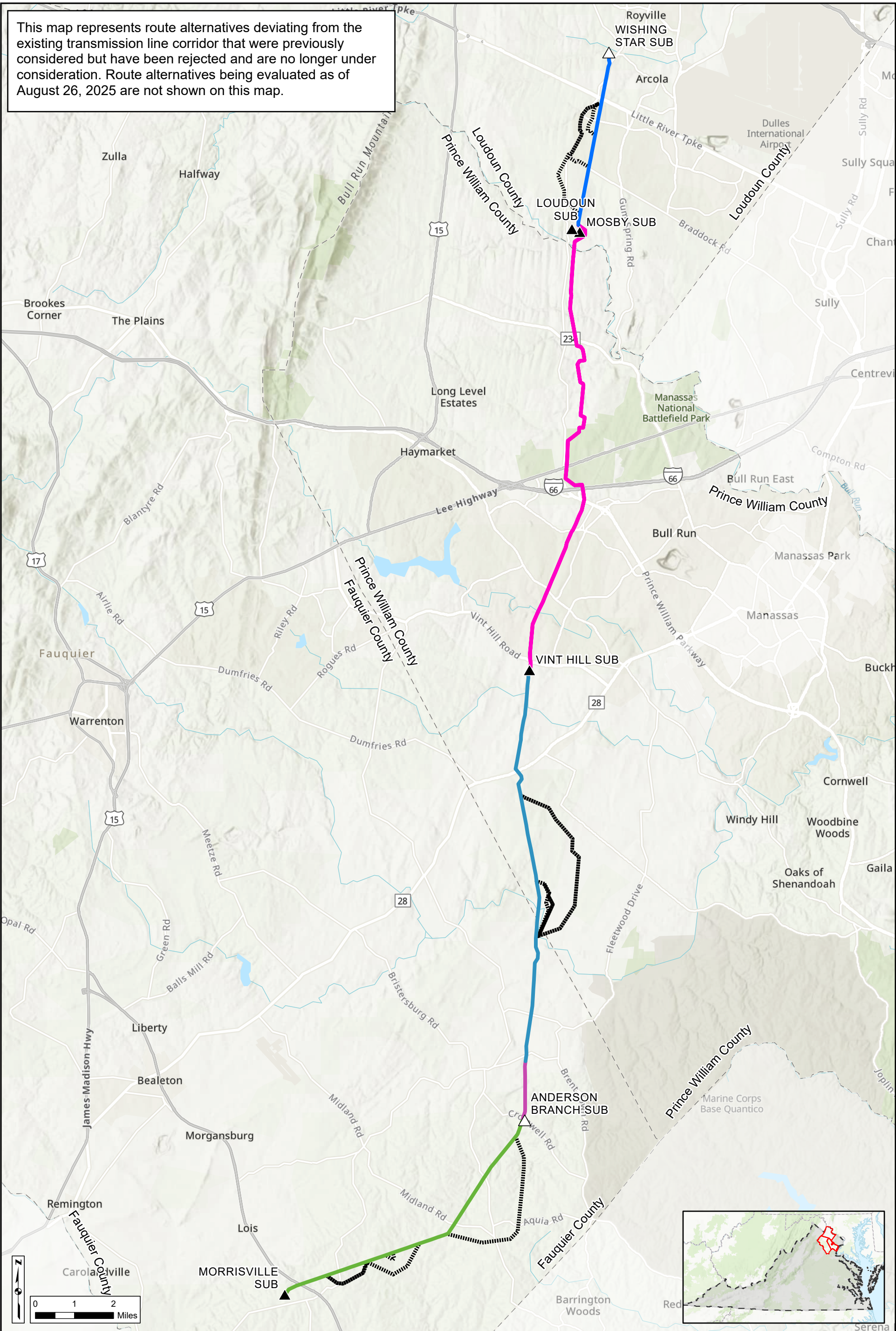


This map represents route alternatives deviating from the existing transmission line corridor that were previously considered but have been rejected and are no longer under consideration. Route alternatives being evaluated as of August 26, 2025 are not shown on this map.



- Dominion Facilities**
- ▲ Existing Substation
 - △ Future Substation
 - Route Rejected from Further Consideration

- Existing Corridor Project Segments**
- Segment 1
 - Segment 2A
 - Segment 2B
 - Segment 3
 - Segment 4

Previous Route Alternatives Rejected from Further Consideration
Morrisville to Wishing Star 500 and 230 kV Electric Transmission Project
Dominion Energy Virginia
Loudoun, Prince William, and Fauquier Counties, Virginia



For environmental review use only.