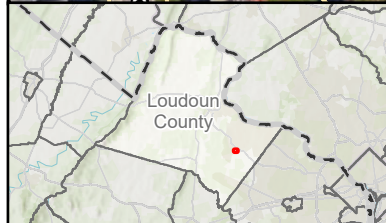
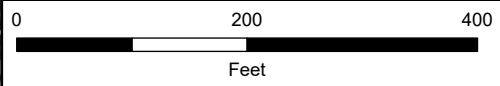
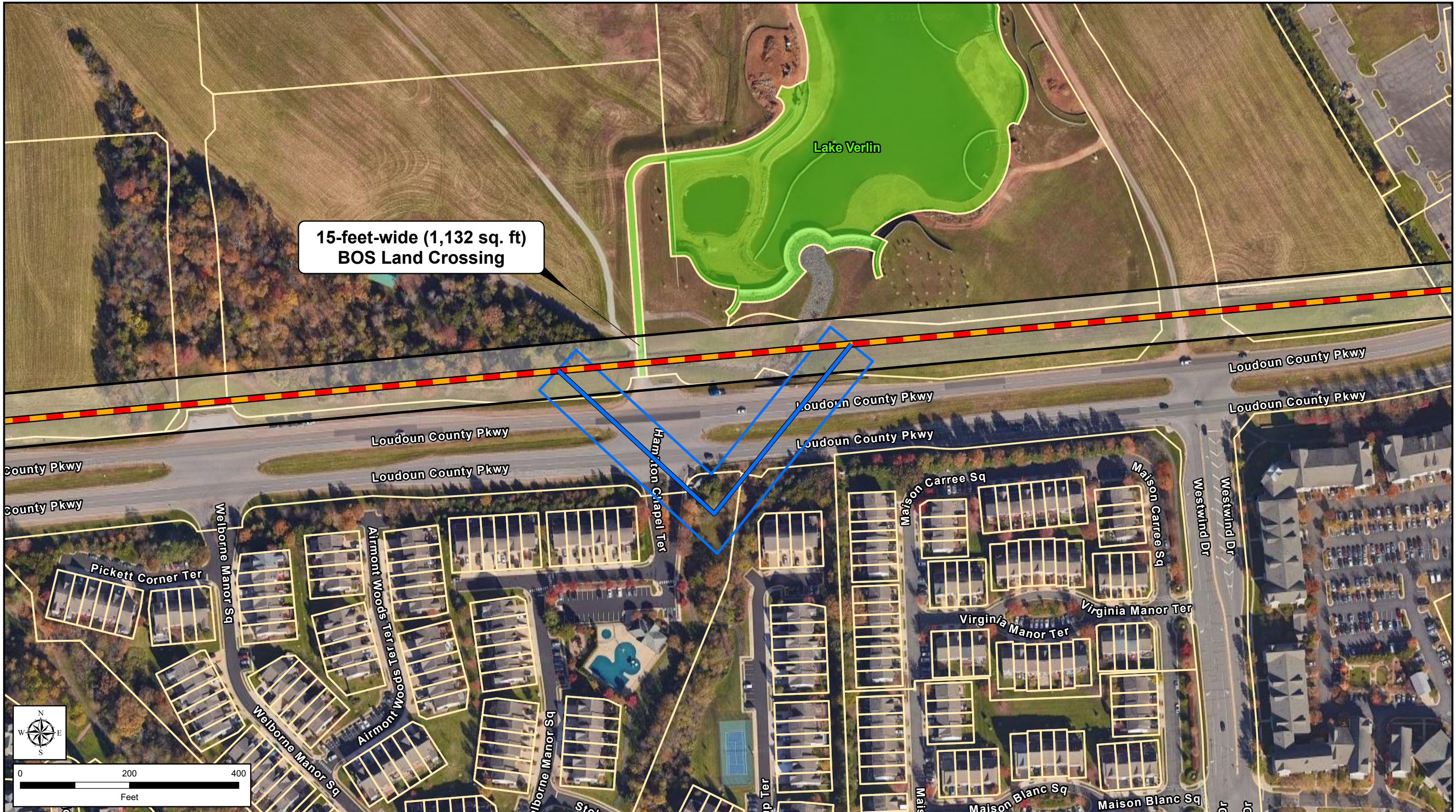


15-foot-wide (1,132 sq. ft)
BOS Land Crossing



- Project Components**
- Golden-Mars Route 1
 - Golden-Mars Route 5
 - BOS Avoidance Variation
 - Existing Dominion Transmission Line
 - Parcels
 - Loudoun County Land

Routes 1 and 5 BOS Avoidance Variation
Golden-Mars 500-230 kV Electric Transmission Project
Dominion Energy Virginia
 Loudoun County, Virginia

