

Map Page 1

Golden-Mars 500-230 kV Electric Transmission Project



- | | | | | | |
|-----------------------|-------------------------------------|------------------------------|---|--|---------------------------|
| ▲ Existing Substation | Route 5 | ☪ Cemetery | Planned Single Family Attached Dwelling | ▨ Planned Data Center | ■ MWAA Property |
| ▲ Future Substation | Lockridge 230 kV Loop | ◆ Cultural/Historic Resource | Planned Multi Family Dwelling | ▨ Planned Substation | ■ BOS Open Space Easement |
| — Route 1 | Existing Dominion Transmission Line | ☼ Bald Eagle Nest | Planned Mixed Commercial/Residential Building | ▨ Planned Parking | ■ Loudoun County Park |
| — Route 2 | Proposed ROW | ☼ Loudoun County Trail | Planned Commercial/Office Building | ▨ Planned Public Facilities & Institutions | ■ HOA Park |
| — Route 3 | School | ☼ Waterbody | Planned Industrial/Manufacturing | ▨ Loudoun County School Board Property | ▨ FAA Max Heights < 150' |
| — Route 4 | Place of Worship | ☼ W&OD Trail | | | ▨ FEMA Floodplains |

Map Page 2

Golden-Mars 500-230 kV Electric Transmission Project



▲ Existing Substation	— Existing Dominion Transmission Line	🦅 Bald Eagle Nest	▨ Planned Mixed Commercial/Residential Building	▨ Parcel Boundary	🌳 HOA Park
— Route 1	▨ Proposed ROW	— Loudoun County Trail	▨ Planned Commercial/Office Building	▨ Loudoun County School Board Property	▨ 1,100' Doppler Radar Buffer
— Route 2	🏫 School	— Waterbody	▨ Planned Data Center	▨ NOAA Property	▨ FAA Max Heights < 150'
— Route 3	🏪 Cemetery	— W&OD Trail	▨ Planned Substation	▨ MWA Property	🌊 FEMA Floodplains
— Route 4	🏛️ Cultural/Historic Resource	▨ Planned Single Family Attached Dwelling	▨ Planned Parking	▨ BOS Open Space Easement	
— Route 5	📡 NOAA Doppler Radar Tower	▨ Planned Multi Family Dwelling	▨ Planned Public Facilities & Institutions	▨ Loudoun County Park	
— Lockridge 230 kV Loop					

Map Page 3

Golden-Mars 500-230 kV Electric Transmission Project



<div>Route 1</div> <div>Route 2</div> <div>Route 3</div> <div>Route 4</div> <div>Route 5</div> <div>Lockridge 230 kV Loop</div>	<div>Existing Dominion Transmission Line</div> <div>Proposed ROW</div> <div>School</div> <div>Cemetery</div> <div>NOAA Doppler Radar Tower</div>	<div>Loudoun County Trail</div> <div>Waterbody</div> <div>Planned Single Family Attached Dwelling</div> <div>Planned Multi Family Dwelling</div> <div>Planned Mixed Commercial/Residential Building</div>	<div>Planned Commercial/Office Building</div> <div>Planned Data Center</div> <div>Planned Substation</div> <div>Planned Parking</div> <div>Planned Public Facilities & Institutions</div> <div>Parcel Boundary</div>	<div>Loudoun County School Board Property</div> <div>Loudoun Water</div> <div>NOAA Property</div> <div>MWAA Property</div> <div>BOS Open Space Easement</div>	<div>Loudoun County Park</div> <div>HOA Park</div> <div>1,100' Doppler Radar Buffer</div> <div>FAA Max Heights < 150'</div> <div>FEMA Floodplains</div>
---	--	---	--	---	--

Map Page 4

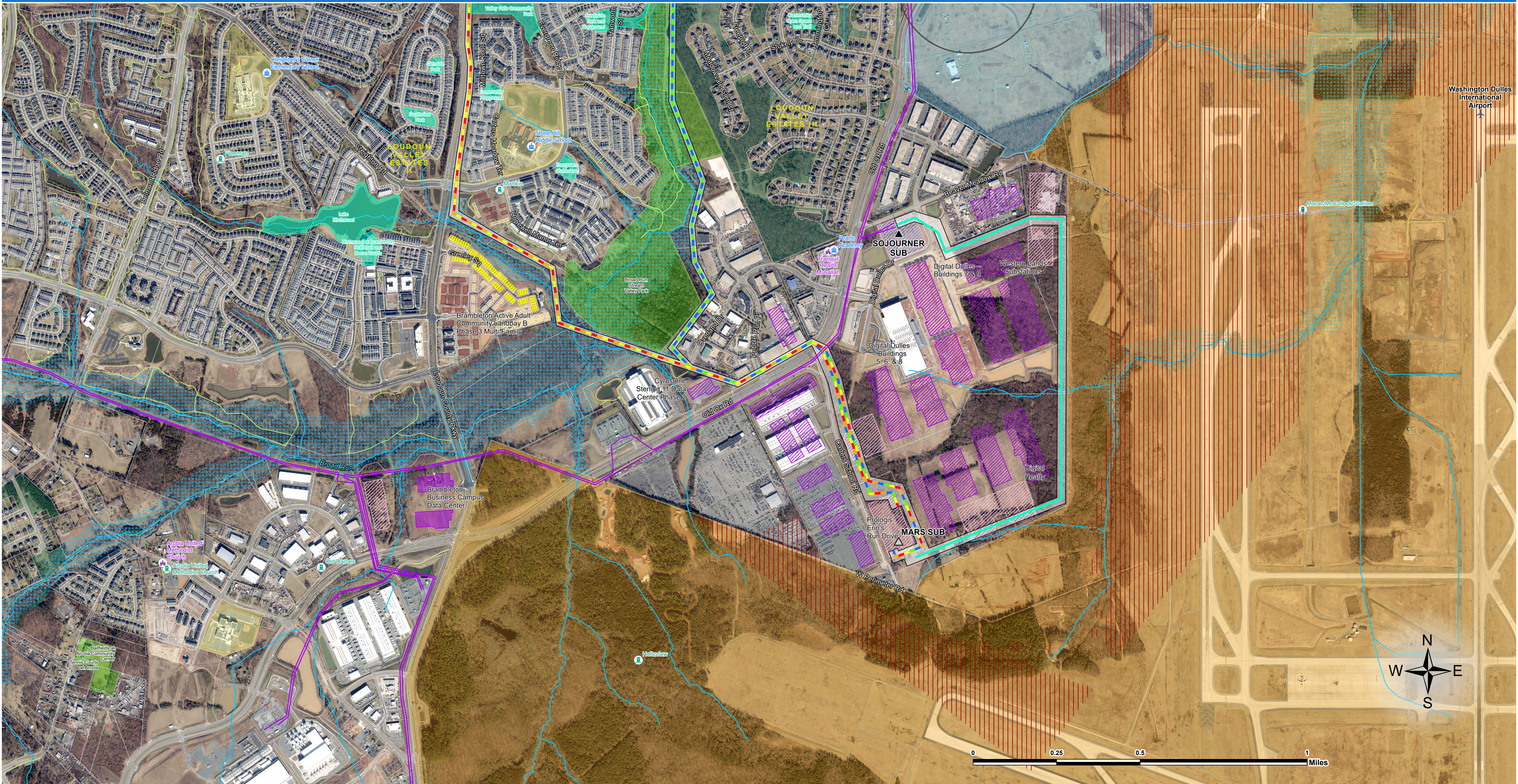
Golden-Mars 500-230 kV Electric Transmission Project



▲ Existing Substation	— Sojourner 230 kV Loop	Ⓜ Cemetery	■ Planned Single Family Attached Dwelling	▭ Parcel Boundary	■ Loudoun County Park
— Route 1	— Existing Dominion Transmission Line	Ⓜ NOAA Doppler Radar Tower	■ Planned Multi Family Dwelling	▭ Loudoun County School Board Property	■ HOA Park
— Route 2	▭ Proposed ROW	— Loudoun County Trail	■ Planned Commercial/Office Building	▭ NOAA Property	▭ 1,100' Doppler Radar Buffer
— Route 3	Ⓜ School	— Waterbody	■ Planned Data Center	▭ MWAA Property	▭ FAA Max Heights < 150'
— Route 4	Ⓜ Place of Worship	■ Planned Single Family Dwelling	■ Planned Substation	▭ BOS Open Space Easement	▭ FEMA Floodplains
— Route 5					

Map Page 5

Golden-Mars 500-230 kV Electric Transmission Project



	Existing Substation		Route 4		School		Planned Single Family Dwelling		Planned Substation		BOS Open Space Easement
	Future Substation		Route 5		Place of Worship		Planned Single Family Attached Dwelling		Parcel Boundary		Loudoun County Park
	Route 1		Sojourner 230 kV Loop		Cemetery		Planned Multi Family Dwelling		Loudoun County School Board Property		HOA Park
	Route 2		Existing Dominion Transmission Line		Loudoun County Trail		Planned Industrial/Manufacturing		NOAA Property		1,100' Doppler Radar Buffer
	Route 3		Proposed ROW		Waterbody		Planned Data Center		MWA Property		FAA Max Heights < 150'
											FEMA Floodplains