

# MARSH RUN TO REMINGTON

Transmission Line Project

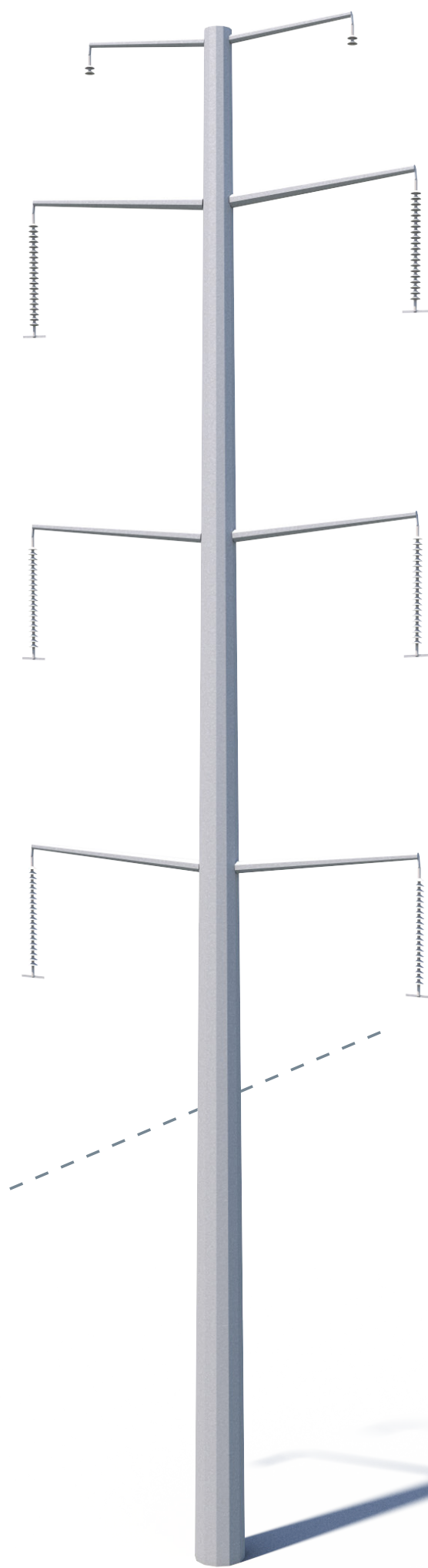
## Typical Proposed Structures

Visualization is for discussion purposes only.  
Final design is subject to change pending public,  
engineering, and regulatory review.



**121' Tall**  
on average

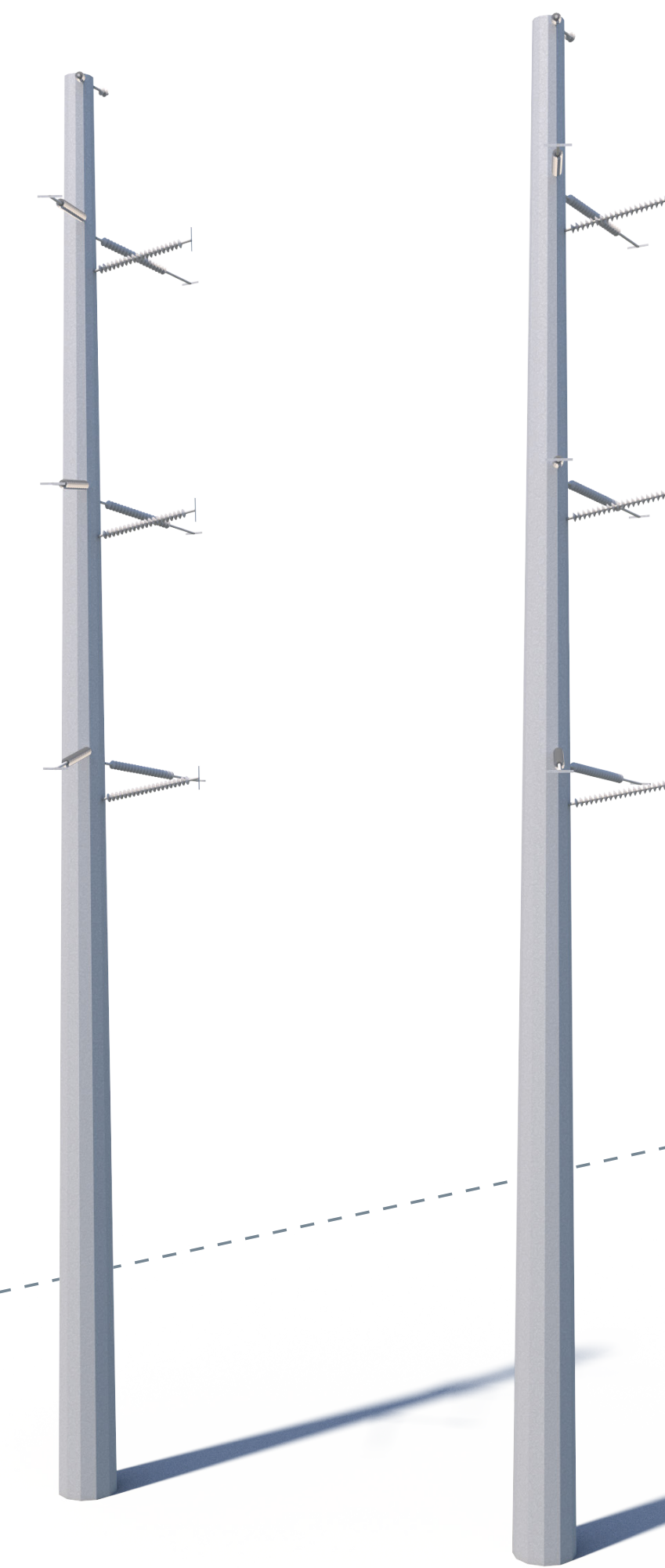
**Monopole  
Suspension**  
Galvanized



**130' Right-of-Way**

**120' Tall**  
on average

**Two Pole**  
Galvanized



**135' Right-of-Way**