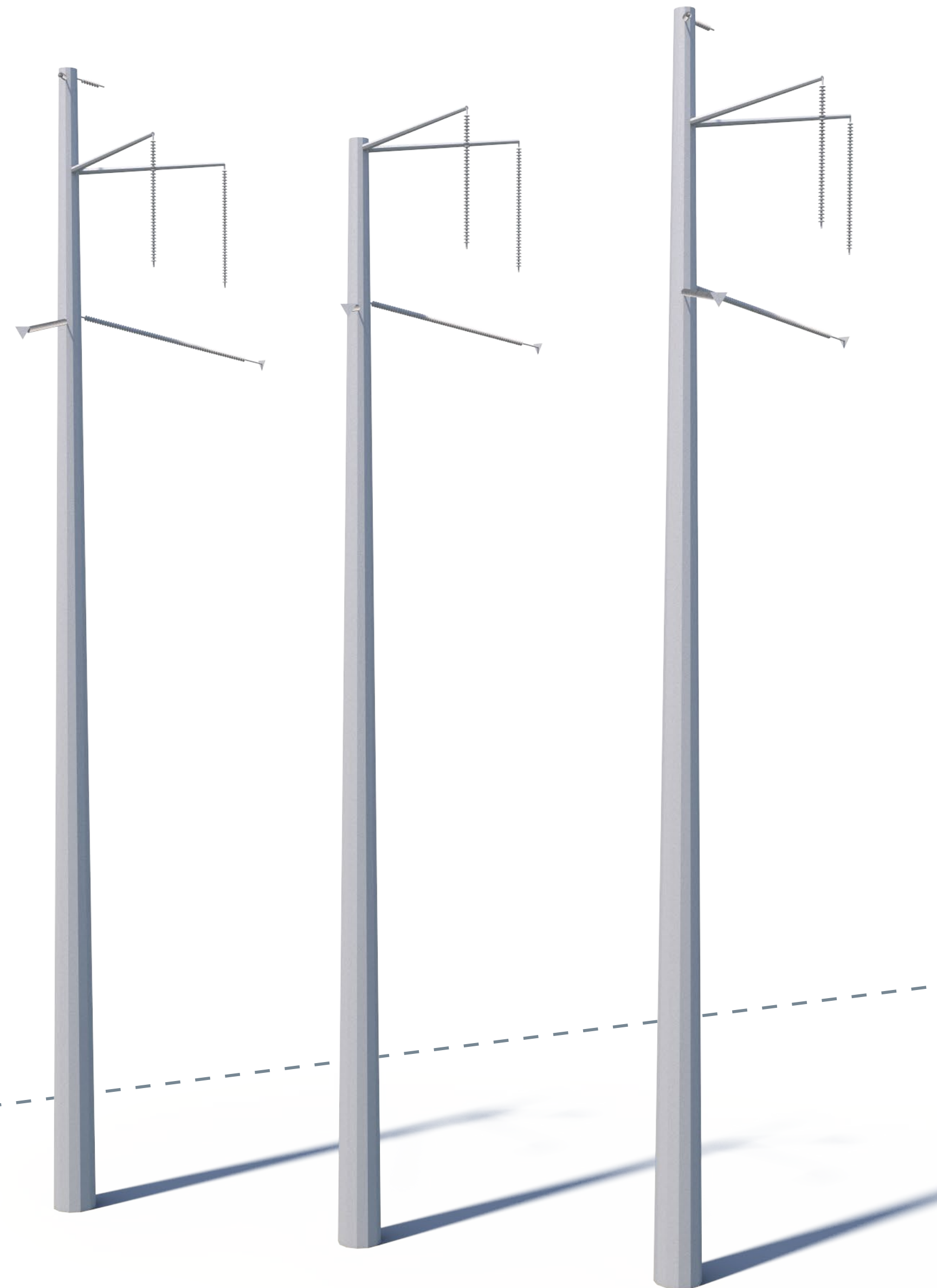


**119' Tall**  
on average

**3 Pole**

Galvanized Steel

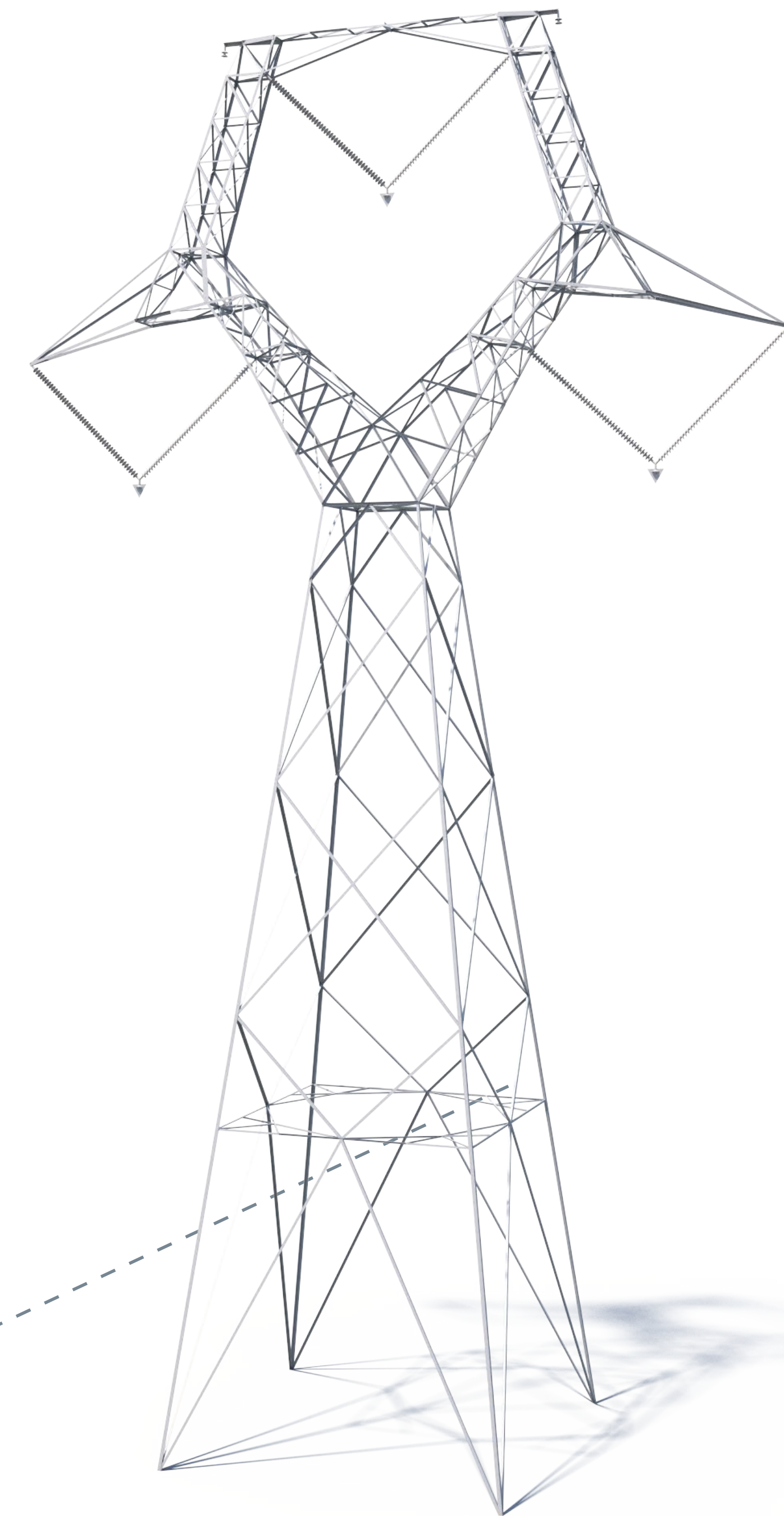


**150' Right-of-Way**

**137' Tall**  
on average

**Lattice**

Galvanized Steel



**150' Right-of-Way**

**SEPTA TO  
YADKIN**

Electric Transmission Line Rebuild Project

Typical Proposed Structures

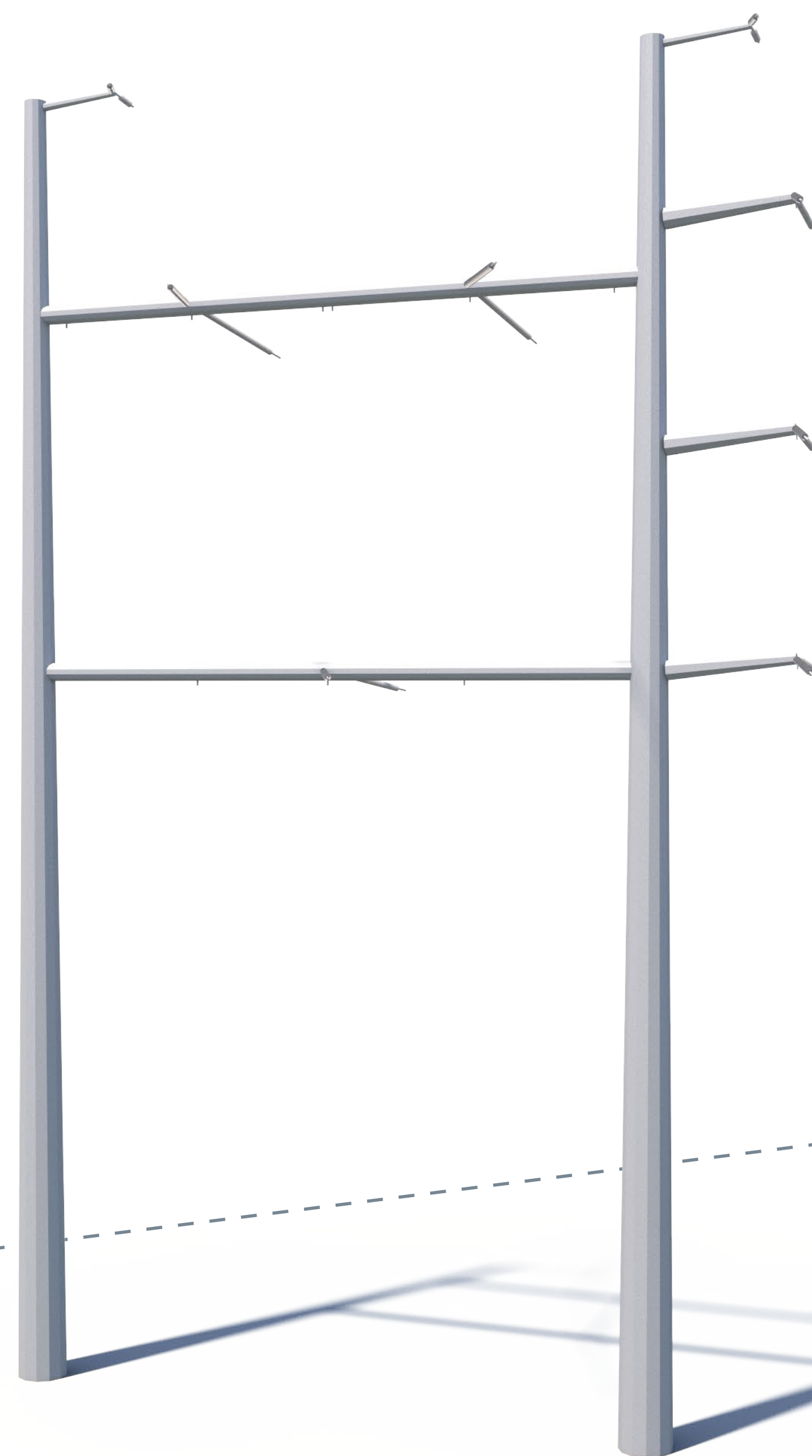
Visualization is for discussion purposes only.  
Final design is subject to change pending public,  
engineering, and regulatory review.



**138' Tall**  
on average

**H-Frame**

Galvanized Steel

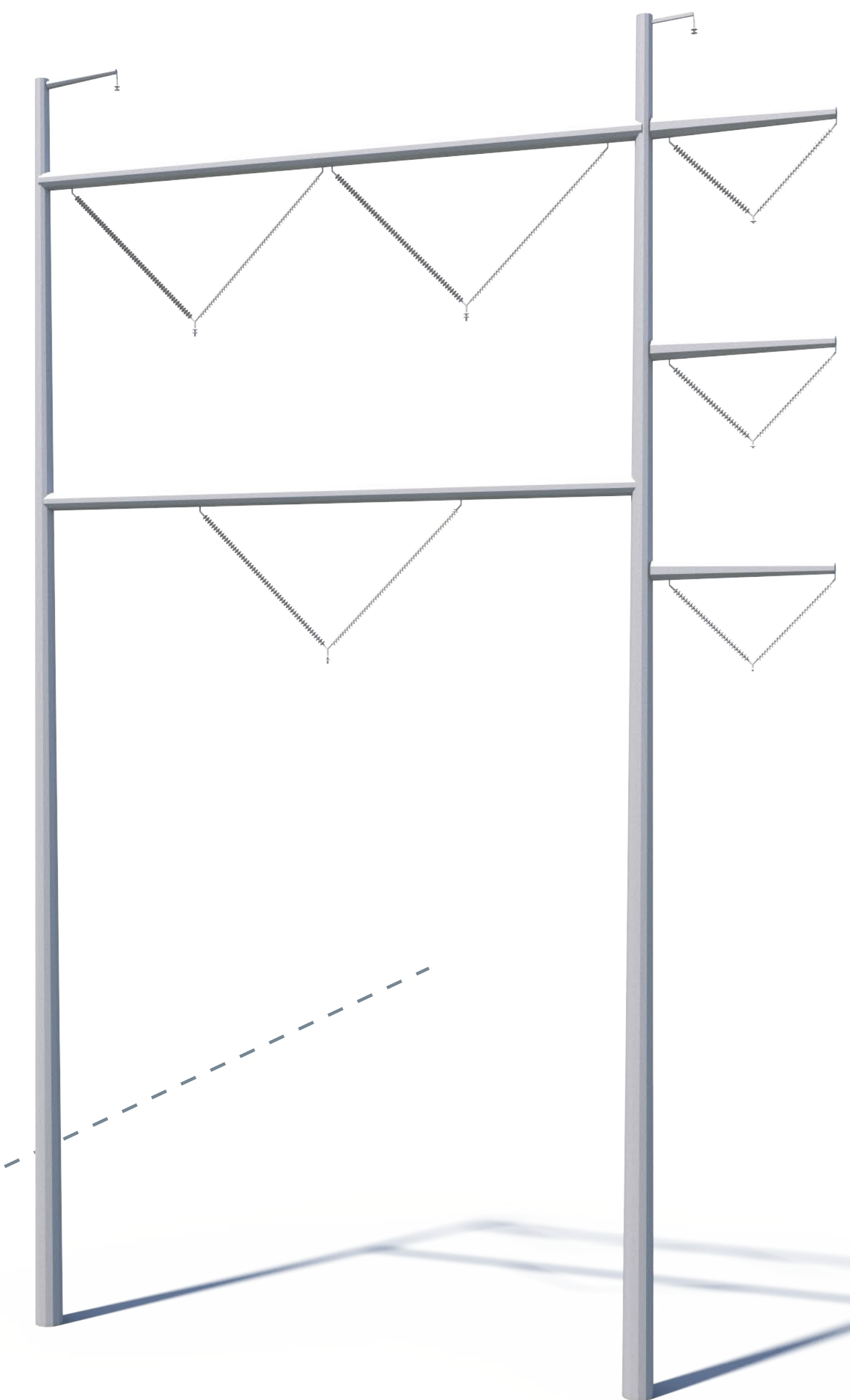


**150' Right-of-Way**

**139' Tall**  
on average

**H-Frame**

Galvanized Steel



**150' Right-of-Way**

**SEPTA TO  
YADKIN**

Electric Transmission Line Rebuild Project

Typical Proposed Structures

Visualization is for discussion purposes only.  
Final design is subject to change pending public,  
engineering, and regulatory review.

