



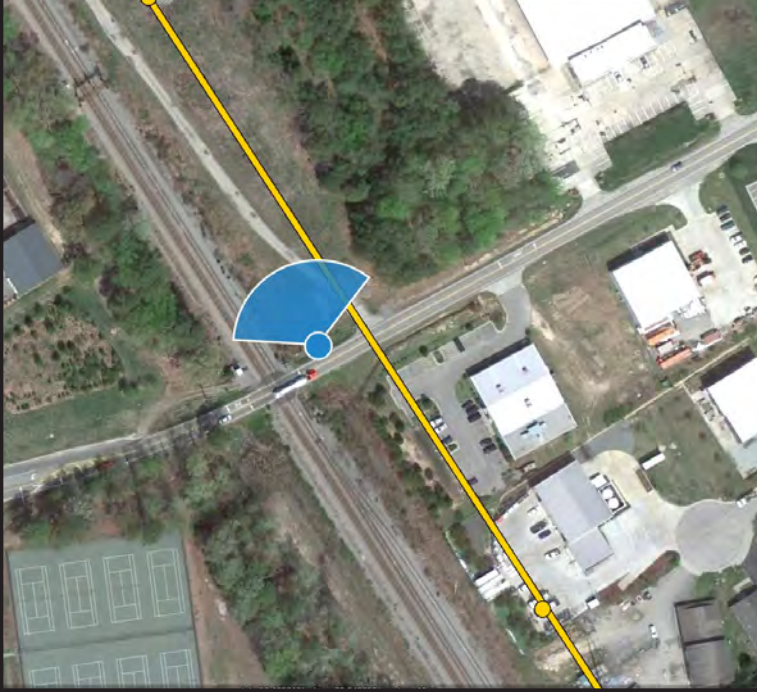
Viewpoint 07 - Industrial Park Drive - Looking Northwest - Proposed View



Surry-Skiffes Creek 500 kV Transmission Line  
Skiffes Creek-Wheaton 230 kV Transmission Line  
Skiffes Creek 500-230-115 kV Switching Station

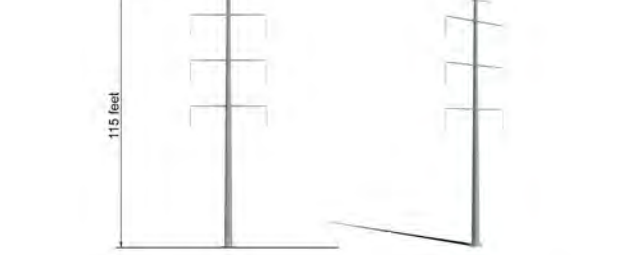
Viewpoint 07  
Industrial Park Drive  
Looking Northwest

Viewpoint Location  
Transmission Line

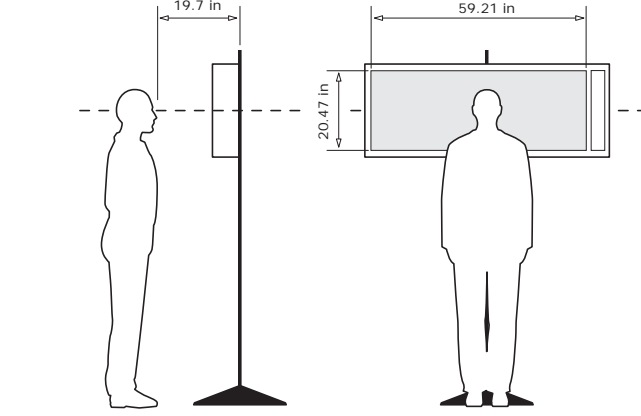


Easting Position (Virginia South Zone, NAD 83): 12051068.9  
Northing Position (Virginia South Zone, NAD 83): 3589597.8  
Elevation of Viewpoint Position (NAD 83 / Ft): 35.8  
Height of Camera Above Ground (ft): 5.4  
Date of Photography: 25th November 2011 at 11:59 a.m.  
Orientation of View: NW  
Horizontal Field of View: 124°  
Vertical Field of View: 55°

3D Model Data - Proposed 230kV Pole



Correct Viewing of TrueView™  
Photosimulations



NOTES:  
Viewpoint locations have been precision surveyed by  
Dominion Virginia Power  
Coordinator - Survey Services  
Larry Hedblom, L.S.  
701 East Cary Street  
Richmond, Va. 23219  
No part of this photosimulation shall be altered in any way.  
Visual Assessments should be made from the full size TrueView™ only.

Photosimulation Created Using  
TrueView™2 Technology  
PROVIDED BY  
TRUESCAPE  
VISUAL COMMUNICATION  
www.truescape.com

Tower placement in simulations is preliminary - final tower locations may change upon final design and survey





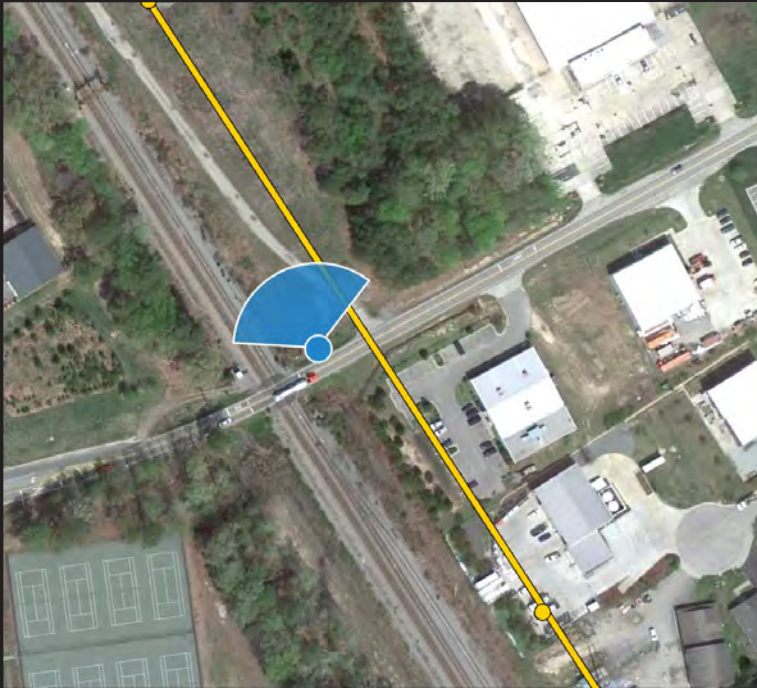
Viewpoint 07 - Industrial Park Drive - Looking Northwest - Proposed View



Surry-Skiffes Creek 500 kV Transmission Line  
Skiffes Creek-Wheaton 230 kV Transmission Line  
Skiffes Creek 500-230-115 kV Switching Station

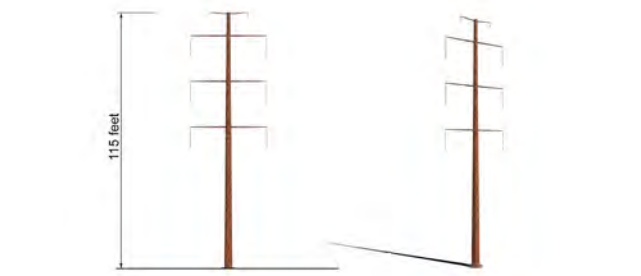
Viewpoint 07  
Industrial Park Drive  
Looking Northwest

Viewpoint Location  
Transmission Line

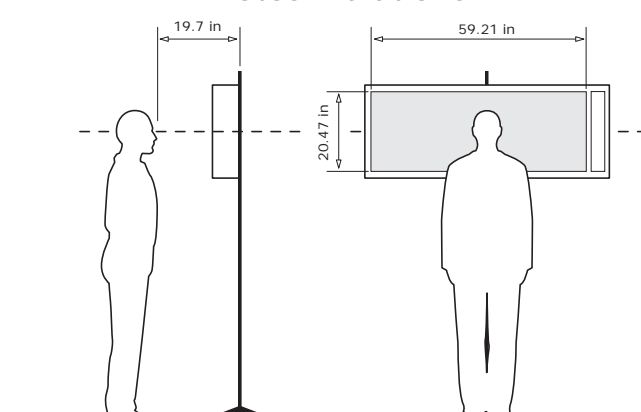


Easting Position (Virginia South Zone, NAD 83): 12051068.9  
Northing Position (Virginia South Zone, NAD 83): 3589597.8  
Elevation of Viewpoint Position (NAD 83 / Ft): 35.8  
Height of Camera Above Ground (ft): 5.4  
Date of Photography: 25th November 2011 at 11:59 a.m.  
Orientation of View: NW  
Horizontal Field of View: 124°  
Vertical Field of View: 55°

3D Model Data - Proposed 230kV Pole



Correct Viewing of TrueView™  
Photosimulations



NOTES:  
Viewpoint locations have been precision surveyed by  
Dominion Virginia Power  
Coordinator - Survey Services  
Larry Hedblom, L.S.  
701 East Cary Street  
Richmond, Va. 23219  
No part of this photosimulation shall be altered in any way.  
Visual Assessments should be made from the full size TrueView™ only.

Photosimulation Created Using  
TrueView™2 Technology  
PROVIDED BY  
TRUESCAPE  
VISUAL COMMUNICATION  
www.truescape.com

Tower placement in simulations is preliminary - final tower locations may change upon final design and survey