

Skiffes Creek-Yorktown 230 kV Electric Transmission Rebuild Project

YORK COUNTY, VIRGINIA



DOMINION ENERGY is committed to providing reliable, affordable, and increasingly clean energy to the communities we serve.

This project proposes rebuilding this 6-mile segment of existing 230kV transmission line between the Skiffes Creek substation and C&O Junction. After five decades of reliable service, the infrastructure is nearing the end of its service life and needs to be rebuilt. This project will utilize the existing right of way.

QUICK FACTS

- **Project length:** 6 miles
- **Location:** York County, VA
- **Voltage:** 230 kV; Lines #209 and #58
- Interruption to your electric service is **not** anticipated because of this project
- **Project website:** DominionEnergy.com/skiffescreekyorktown



SCAN HERE TO LEARN MORE

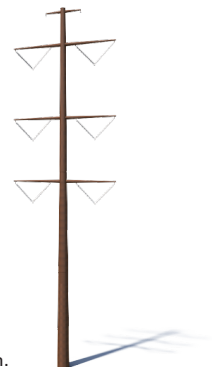
EXISTING CONDITIONS

Type: Wooden, Double-Circuit, H-Frames
Existing Average Height: 67 ft

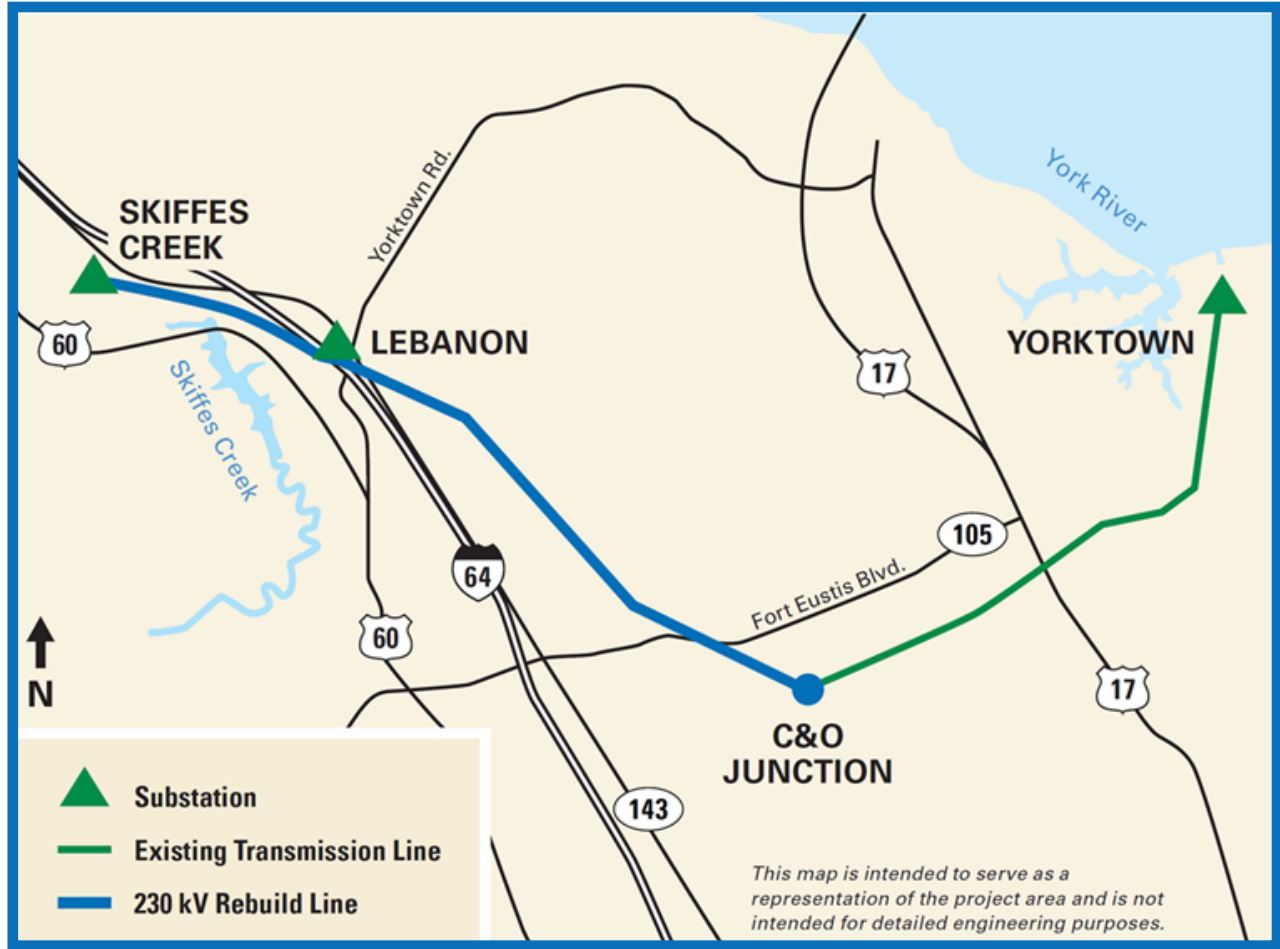


PROPOSED CONDITIONS

Type: Weathering Steel, Double-Circuit, Monopoles
Proposed Average Height: 102 ft
Number of Structures: 58



NOTE: Proposed structure heights are based on preliminary engineering calculations and are subject to change with final engineering design.



PROJECT SCHEDULE

SUBJECT TO CHANGE

TIMEFRAME	ACTIVITY
MAY 2026	Project announcement
JUNE 2026	Community meeting
SUMMER 2026	File application with the Virginia State Corporation Commission (SCC)
SPRING 2027	Anticipated SCC ruling
FALL 2028	Construction to begin
LATE 2029	Construction completed

YOUR FEEDBACK MATTERS

The purpose of our public engagement is to share, listen and learn. The SCC considers public input in its review process. There are multiple ways to share feedback with our team:

- Contact us by email: powerline@dominionenergy.com
- Call: 888-291-0190
- Leave your comments in our GeoVoice tool, available on the project website: DominionEnergy.com/skiffescreekyorktown