



South Hill

Transmission Line Project

Aerial Rendering 1

Northern Solution

Typical Structure:
120' - 2 Single Circuit
Monopoles

Right-of-Way Width:
120 Feet

Structure Material:
Galvanized Steel

Viewing Direction:
Southeast

Visualization is for discussion purposes only.
Final design is subject to change pending public,
engineering, and regulatory review.



South Hill

Transmission Line Project

Aerial Rendering 1

Northern Solution

Typical Structure:

120' - 2 Single Circuit
Monopoles

Right-of-Way Width:

120 Feet

Structure Material:

Weathering Steel

Viewing Direction:

Southeast

Existing Conditions



Proposed Conditions

Visualization is for discussion purposes only.
Final design is subject to change pending public,
engineering, and regulatory review.



Existing Conditions



Proposed Conditions

South Hill

Transmission Line Project

Aerial Rendering 2

Eastern Solution

Typical Structure:

120' - 2 Single Circuit
Monopoles

Right-of-Way Width:

120 Feet

Structure Material:

Galvanized Steel

Viewing Direction:

Northeast

Visualization is for discussion purposes only.
Final design is subject to change pending public,
engineering, and regulatory review.



Existing Conditions



Proposed Conditions

South Hill

Transmission Line Project

Aerial Rendering 2

Eastern Solution

Typical Structure:

120' - 2 Single Circuit Monopoles

Right-of-Way Width:

120 Feet

Structure Material:

Weathering Steel

Viewing Direction:

Northeast

Visualization is for discussion purposes only.
Final design is subject to change pending public,
engineering, and regulatory review.





Existing Conditions



Proposed Conditions

South Hill

Transmission Line Project

Ground Rendering

Eastern & Northern Solution

Typical Structure:

120' - 2 Single Circuit Monopoles

Right-of-Way Width:

120 Feet

Structure Material:

Galvanized Steel

Viewing Direction:

West

Visualization is for discussion purposes only.
Final design is subject to change pending public,
engineering, and regulatory review.





Existing Conditions



Proposed Conditions

South Hill

Transmission Line Project

Ground Rendering

Eastern & Northern Solution

Typical Structure:

120' - 2 Single Circuit Monopoles

Right-of-Way Width:

120 Feet

Structure Material:

Weathering Steel

Viewing Direction:

West

Visualization is for discussion purposes only.
Final design is subject to change pending public,
engineering, and regulatory review.





South Hill

Transmission Line Project

Aerial Rendering 3

Substation Interconnects Solution

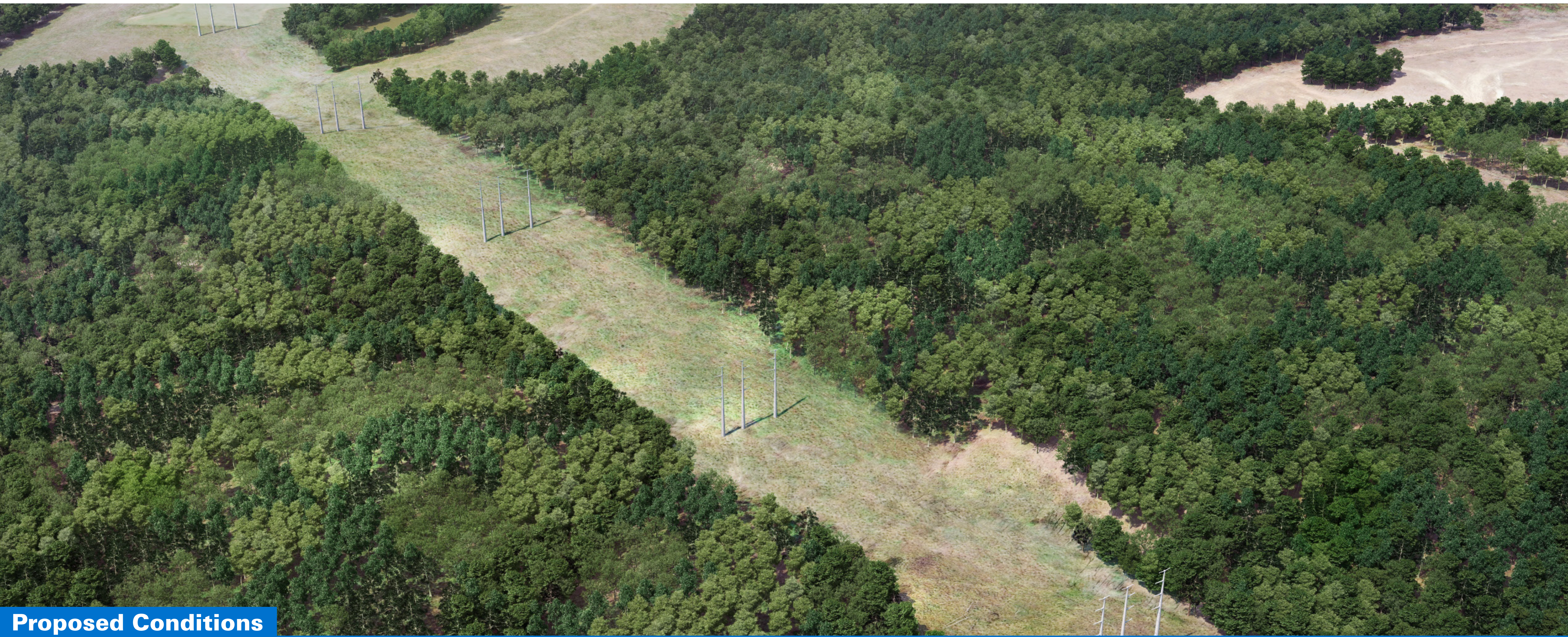
Typical Structure:
120' - 3 Single Circuit
Monopoles

Right-of-Way Width:
160 Feet

Structure Material:
Galvanized Steel

Viewing Direction:
East

Visualization is for discussion purposes only.
Final design is subject to change pending public,
engineering, and regulatory review.





Existing Conditions



Proposed Conditions

South Hill

Transmission Line Project

Aerial Rendering 3

Substation Interconnects Solution

Typical Structure:

120' - 3 Single Circuit
Monopoles

Right-of-Way Width:

160 Feet

Structure Material:

Weathering Steel

Viewing Direction:

East

Visualization is for discussion purposes only.
Final design is subject to change pending public,
engineering, and regulatory review.

