



Dominion Energy image. Not project specific.

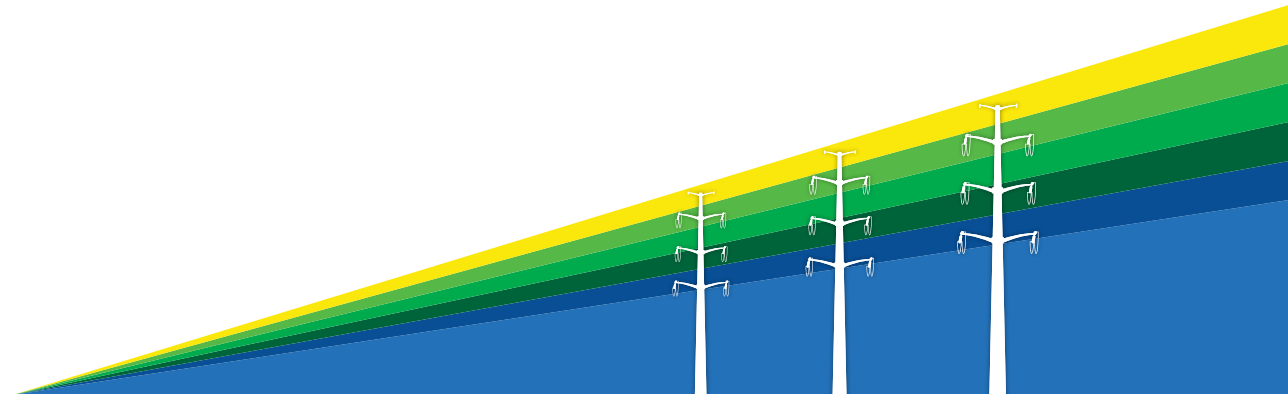


Electric Transmission
P.O. Box 26666
Richmond, VA 23261

**Learn more about upgraded transmission lines
in Edgecombe and Pitt counties, North Carolina.**



**SCAN HERE
TO LEARN
MORE**



Work in Your Community

Tarboro to Parmele 115 kV Electric Transmission Line Rebuild Project

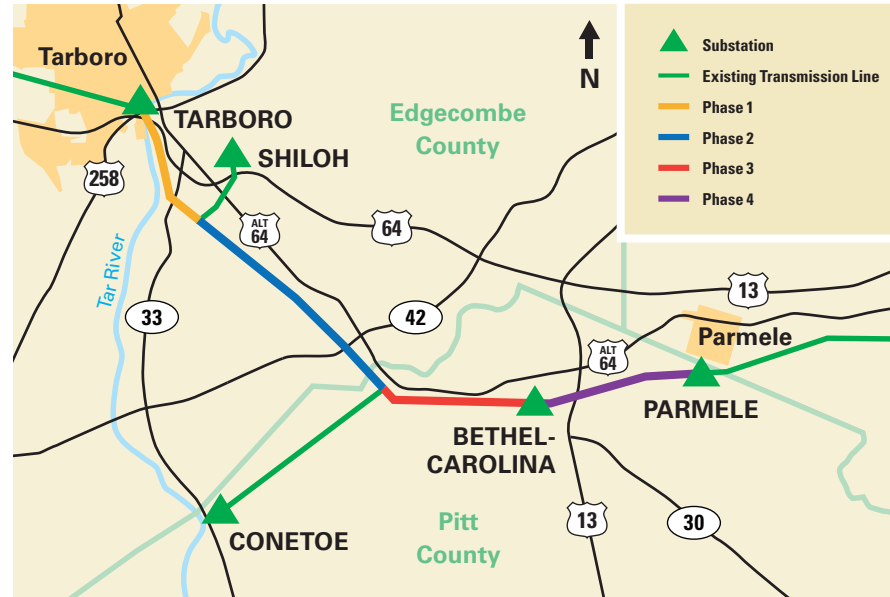
At Dominion Energy, we are committed to providing safe, reliable, and affordable electricity to the communities we serve. You are receiving this postcard because we would like to provide an update on the Tarboro to Parmele 115 Kilovolt (kV) Electric Transmission Line Rebuild Project.



SCAN HERE
TO LEARN
MORE

The transmission structures and related components on the 15.7-mile line between our Tarboro and Parmele substations in the counties of Edgecombe and Pitt, North Carolina are at the end of their service life. Rebuilding this line will ensure safe and reliable service for decades to come. We have completed Phase 1 of this project and are very close to completing Phase 2. Phase 3 construction will start in early August and we will move into Phase 4 towards the end of the year. Phase 5 and restoration activities will conclude in 2025.

Your electric service is not expected to be interrupted as a result of this work. Thank you for your patience and understanding as we complete this important reliability project.



This map is intended to serve as a representation of the project area and is not intended for detailed engineering purposes.

Protecting the grid against natural and man-made acts is a top priority. You can learn more about our commitment to safety at powerlines101.dominionenergy.com.

CONSTRUCTION SCHEDULE

- **Phase 1 Tarboro to Shiloh:**
Jan – Mar 2024 (COMPLETE)
- **Phase 2 Shiloh to Conetoe:**
Mar – Aug 2024
- **Phase 3 Conetoe to Bethel-Carolina:**
Aug – Nov 2024
- **Phase 4 Bethel-Carolina to Parmele:**
Late 2024 – spring 2025
- **Phase 5 Tarboro:**
spring 2025



Crews
in your area



New
infrastructure



Work
in your area

CONTACT US

Website: DominionEnergy.com/Parmele
Email: powerline@dominionenergy.com
Phone: 888-291-0190