

West Creek 230 kV Electric Transmission Project



Goochland County, Virginia

AT DOMINION ENERGY, we are committed to providing the reliable, affordable, and increasingly clean energy that powers your every day. The West Creek 230 kV Electric Transmission Project proposes to build new electric infrastructure in Goochland County. This project includes:

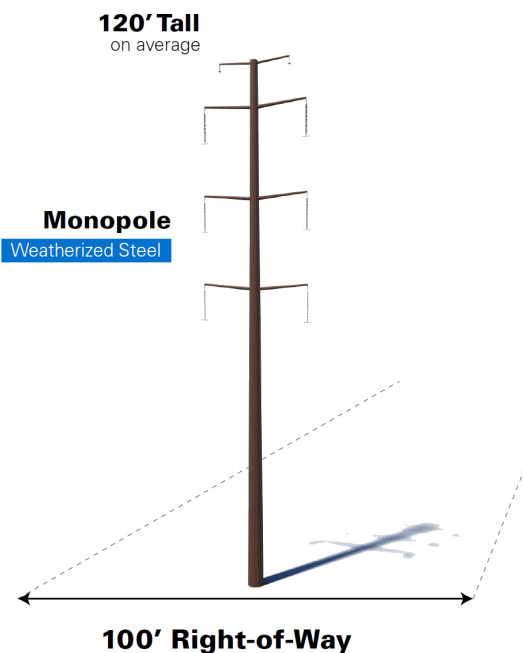
- A new substation
- A new, double-circuit 230 kV transmission line
- New right of way

This new infrastructure is needed to ease the load on the local distribution network serving Goochland County, to support recently announced development projects and to maintain reliable electric service in your area.

PRELIMINARY ROUTES AND STUDY AREA



PROPOSED STRUCTURE TYPE



PROJECT TIMELINE

DATE	ACTIVITY
November 2025	Project Announcement
December 2025	Community Meeting
Early 2026	File application with the Virginia State Corporation Commission (SCC)
Summer 2026	Anticipated SCC ruling
Summer 2027	Construction to begin
Winter 2028	Construction complete
DominionEnergy.com/WestCreek	

West Creek 230 kV Electric Transmission Project

CONTINUED

Goochland County, Virginia

WEST CREEK INTERACTIVE MAP

Interested in learning more about this project? Check out the Interactive Mapping Tool on our project website.

Step 1: Go to [DominionEnergy.com/WestCreek](https://www.dominionenergy.com/WestCreek)

Step 2: Click the West Creek Interactive Map graphic

Step 3: Use the tool to:

- Search for your address and view nearby structures
- View simulation photos and examine routes
- Submit comments and stay informed about the project



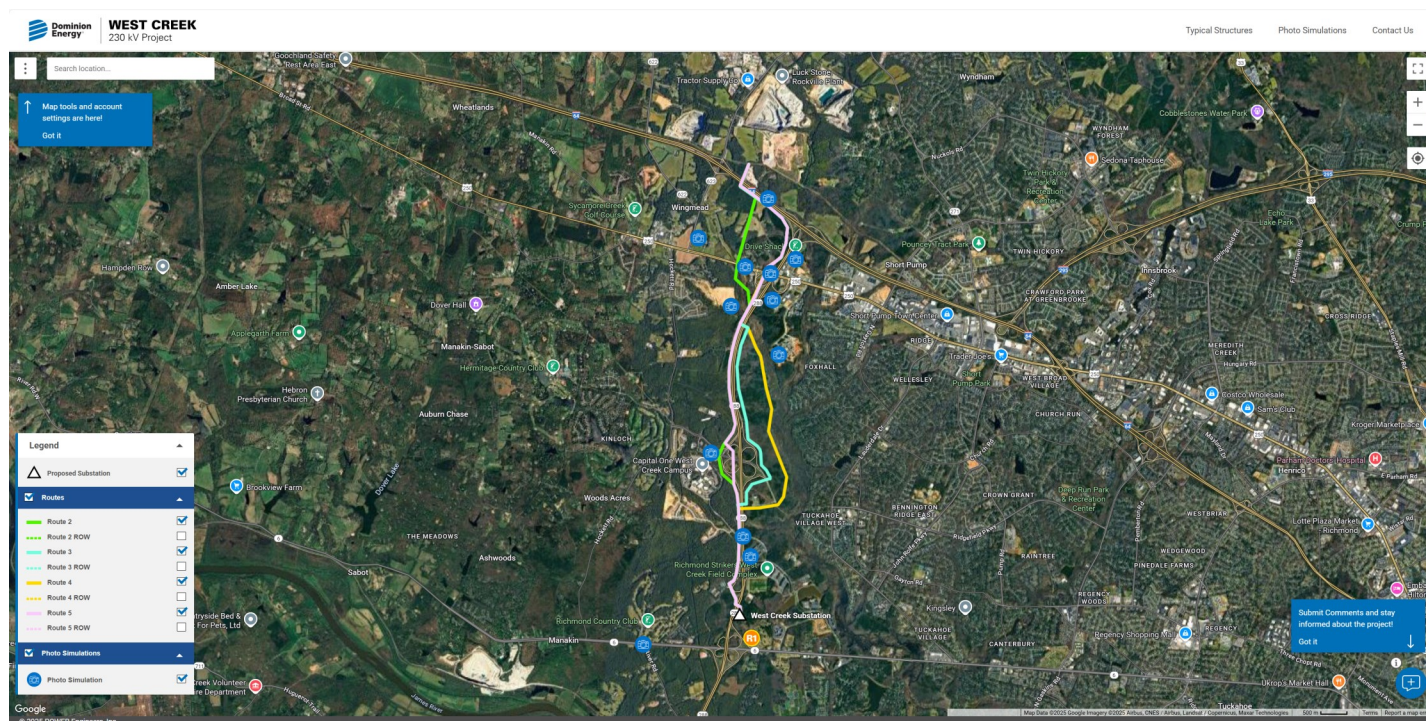
SCAN HERE TO LEARN MORE

ROUTING AND APPROVAL

Planning an electric transmission route is one of the most challenging things we do at Dominion Energy. To avoid or lessen community impacts, multiple factors are considered when deciding where to build a new line, such as:

- **Land Use**
- **Historic and cultural resources**
- **Environmental disruption**

The Virginia State Corporation Commission (SCC) is the regulatory body that will review the necessity of the project and ultimately chooses the route the company must build. While they are the primary agency reviewing and approving the project, there may be additional permits needed from various agencies. Once filed, our application and associated documents are available to view on the legal section of the West Creek project website.



The routes shown in the interactive map are conceptual and subject to change.