

# WESTERN CHESTERFIELD

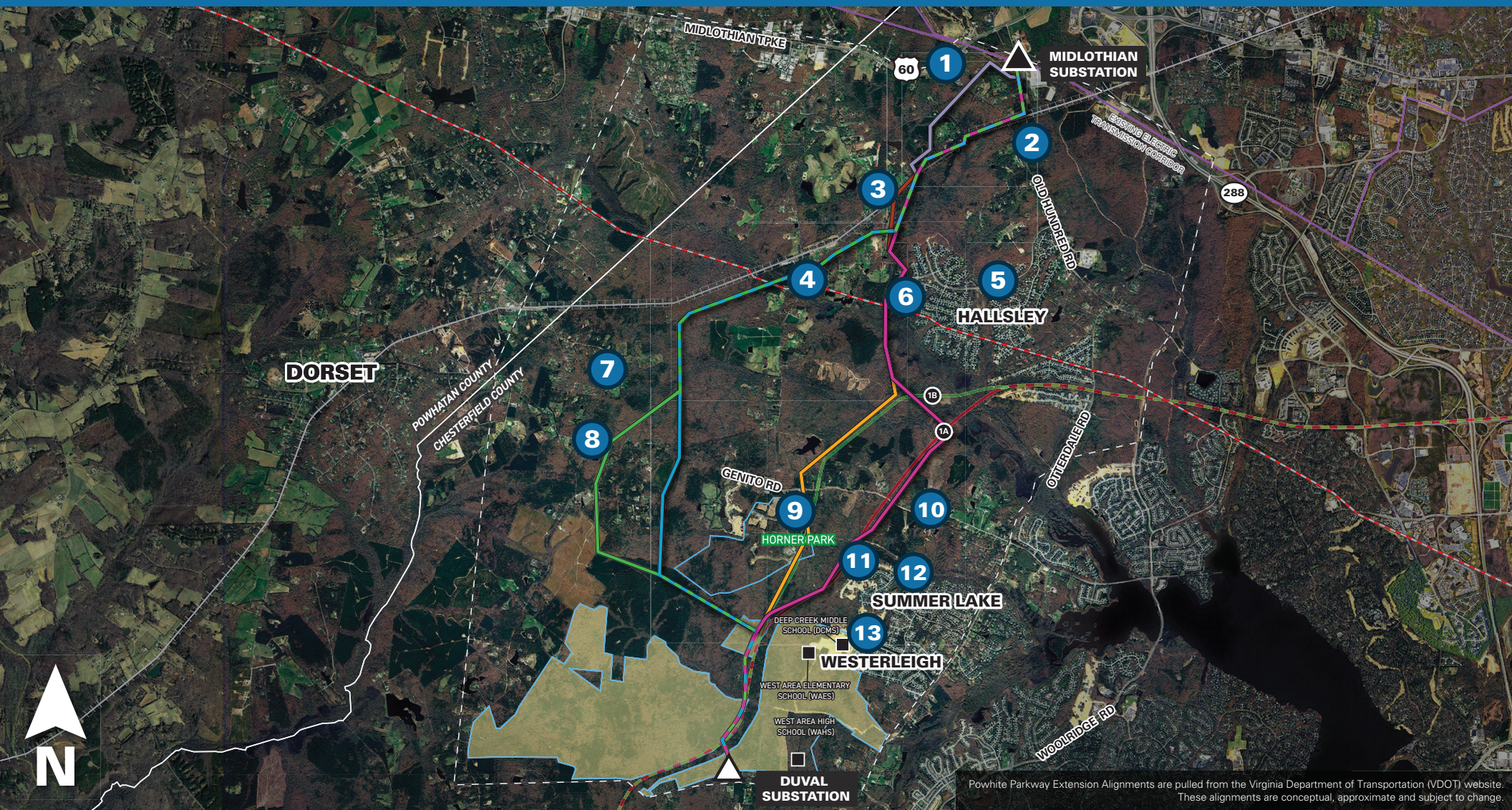
230KV ELECTRIC TRANSMISSION PROJECT

- ▲ Existing Substation
- △ Proposed Substation
- Existing Dominion Transmission Lines
- Existing 16" Colonial Pipeline
- Powwhite Extension Conceptual Alignment 1A
- Powwhite Extension Conceptual Alignment 1B

- Study Area
- ⊢ Railroad
- Upper Magnolia Green
- Chesterfield County Public Parcels

- Overhead Route Alternatives (160' ROW)**
- Route 2A
  - Route 2B
  - Route 3

- Route Variations (160' ROW)**
- Railroad Collocation Variation
  - Mount Hermon Variation Route 2
  - Powwhite Parkway Variation



Powwhite Parkway Extension Alignments are pulled from the Virginia Department of Transportation (VDOT) website. These alignments are conceptual, approximate and subject to change.



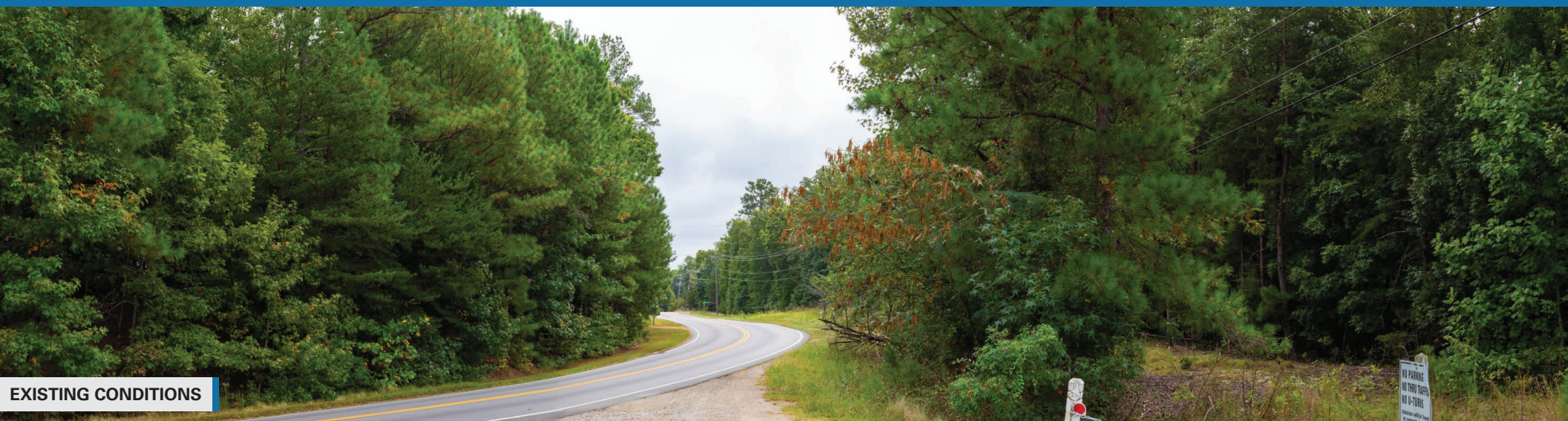
# WESTERN CHESTERFIELD

230KV ELECTRIC TRANSMISSION PROJECT

## Viewpoint 1

Date: 09/16/2024 Time: 10:25 am Viewing Direction: Southeast

- 1 Viewpoint Location
- ▲ Existing Substation
- Mount Hermon Variation Route 2



EXISTING CONDITIONS



PROPOSED CONDITIONS

Photo simulations are for discussion purposes only. Final design is subject to change pending public, engineering, and regulatory review.



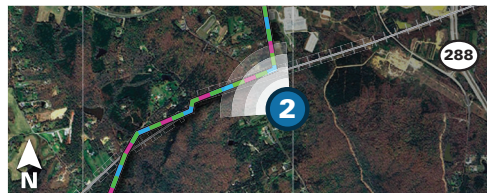
# WESTERN CHESTERFIELD

230KV ELECTRIC TRANSMISSION PROJECT

## Viewpoint 2

Date: 09/16/2024 Time: 9:15 am Viewing Direction: Northwest

- 2 Viewpoint Location
- ▲ Existing Substation
- Route 3
- Route 2B
- Route 2A



EXISTING CONDITIONS



PROPOSED CONDITIONS

OVERLAY

Distance to nearest proposed structure: 1,590 feet

Objects displayed in yellow will be fully or partially obscured by terrain and vegetation.

Photo simulations are for discussion purposes only. Final design is subject to change pending public, engineering, and regulatory review.



# WESTERN CHESTERFIELD

230KV ELECTRIC TRANSMISSION PROJECT

## Viewpoint 3

Date: 09/16/2024 Time: 10:53 am Viewing Direction: Northeast  
3 Viewpoint Location — Railroad Collocation Variation



Photo simulations are for discussion purposes only. Final design is subject to change pending public, engineering, and regulatory review.



# WESTERN CHESTERFIELD

230KV ELECTRIC TRANSMISSION PROJECT

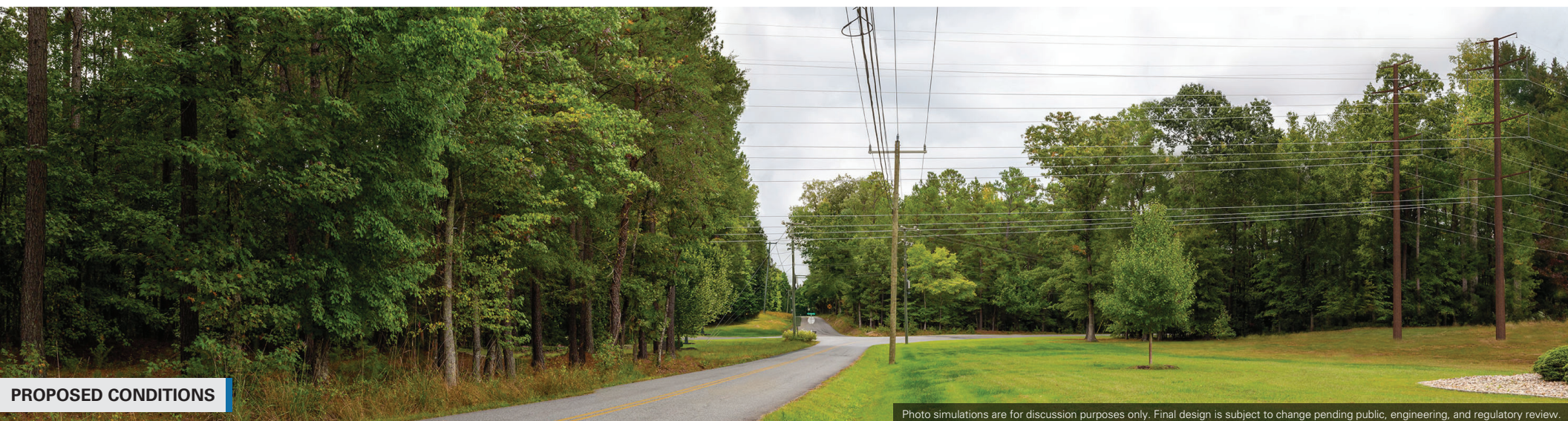
## Viewpoint 4

Date: 09/16/2024 Time: 1:10 pm Viewing Direction: North

4 Viewpoint Location — Route 2A  
— Route 2B



EXISTING CONDITIONS



PROPOSED CONDITIONS

Photo simulations are for discussion purposes only. Final design is subject to change pending public, engineering, and regulatory review.



# WESTERN CHESTERFIELD

230KV ELECTRIC TRANSMISSION PROJECT

## Viewpoint 5

Date: 09/16/2024 Time: 8:59 am Viewing Direction: West

5 Viewpoint Location — Route 3



EXISTING CONDITIONS



PROPOSED CONDITIONS

OVERLAY

Distance to nearest proposed structure: 4,664 feet

Objects displayed in yellow will be fully or partially obscured by terrain, vegetation and existing buildings.

Photo simulations are for discussion purposes only. Final design is subject to change pending public, engineering, and regulatory review.



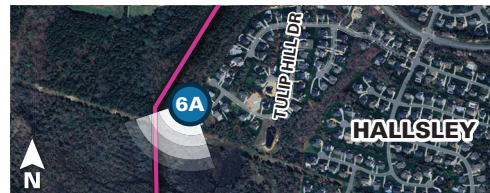
# WESTERN CHESTERFIELD

230KV ELECTRIC TRANSMISSION PROJECT

## Viewpoint 6A

Date: 09/16/2024 Time: 8:31 am Viewing Direction: Southwest

6A Viewpoint Location — Route 3



EXISTING CONDITIONS



PROPOSED CONDITIONS

OVERLAY

Distance to nearest proposed structure: 391 feet

Objects displayed in yellow will be fully or partially obscured by terrain, vegetation and existing buildings.

Photo simulations are for discussion purposes only. Final design is subject to change pending public, engineering, and regulatory review.



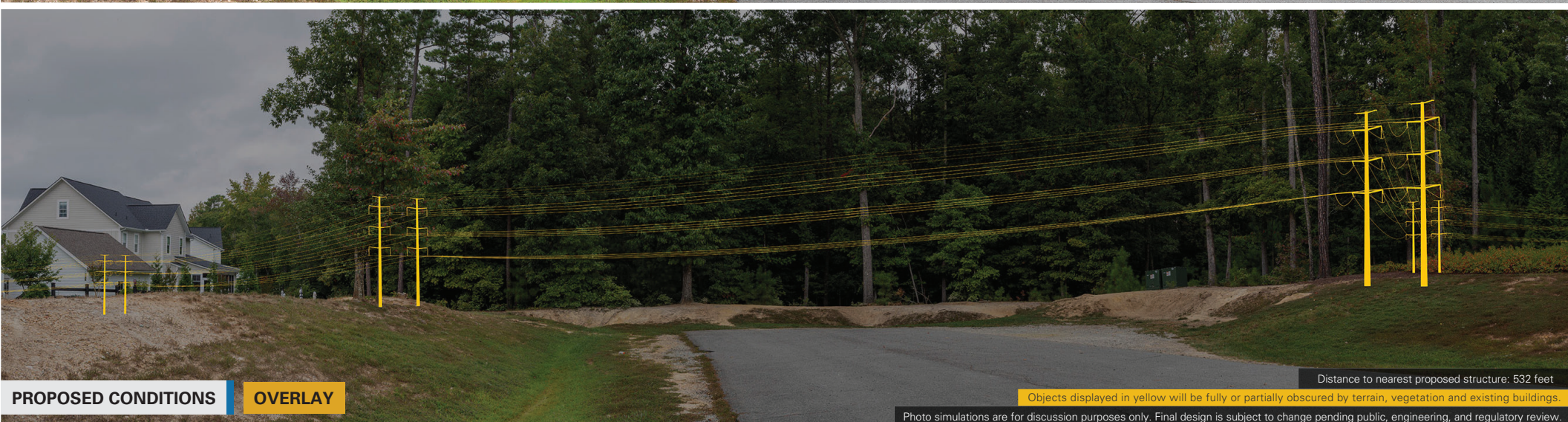
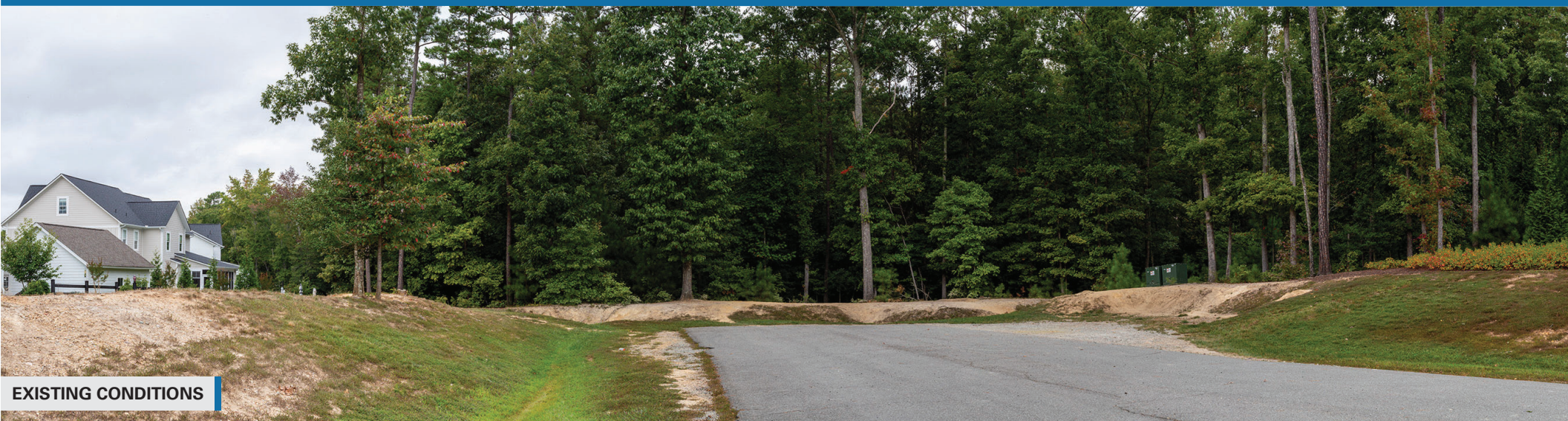
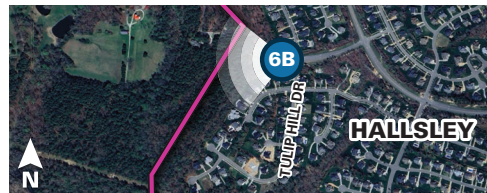
# WESTERN CHESTERFIELD

230KV ELECTRIC TRANSMISSION PROJECT

## Viewpoint 6B

Date: 09/16/2024 Time: 8:40 am Viewing Direction: West

6B Viewpoint Location — Route 3



PROPOSED CONDITIONS

OVERLAY

Distance to nearest proposed structure: 532 feet

Objects displayed in yellow will be fully or partially obscured by terrain, vegetation and existing buildings.

Photo simulations are for discussion purposes only. Final design is subject to change pending public, engineering, and regulatory review.