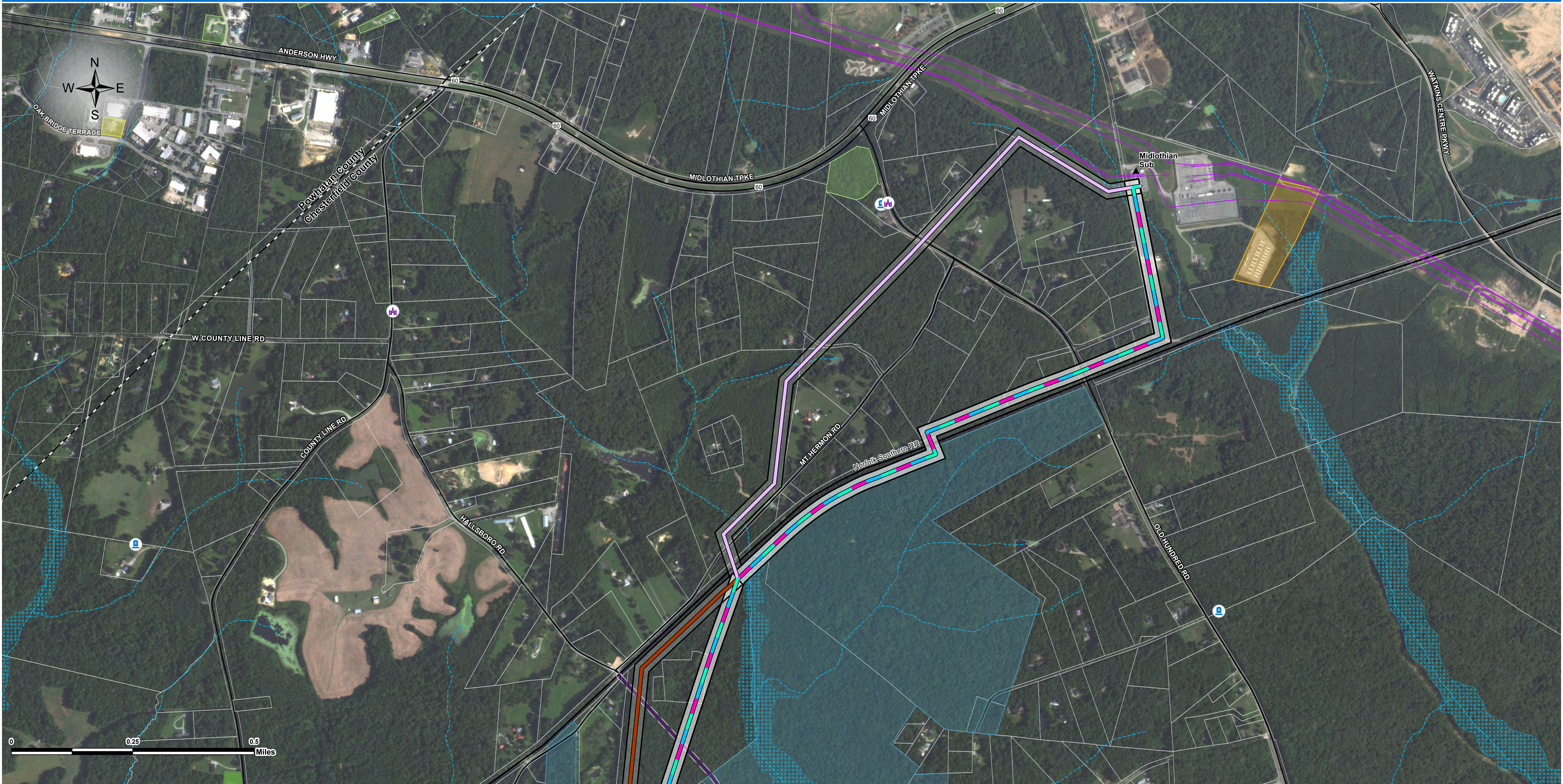


Route Overview Map- Page 1

Western Chesterfield 230 kV Electric Transmission Improvement Project Chesterfield and Powhatan Counties, Virginia



Overhead Route Alternatives (160' ROW)

- Route 2A
- Route 2B
- Route 3

Route Variations

- Mount Hermon Variation Route 2
- Powwhite Parkway Variation
- Railroad Collocation Variation

Dominion Facilities

- Existing Substation
- Proposed Substation
- Existing Dominion Transmission Line

Cemeteries, Schools, Places of Worship

- Places of Worship
- Historic Cemetery
- School

Utility Data

- Existing 16" Colonial Pipeline

Transportation Features

- Railroad
- Planned Powwhite Parkway
- Project Conceptual Alignments
- Planned Major Arterial/Collector Road

Natural Resources

- NHD Streams
- FEMA Floodplains

Planned Developments

- Commercial
- Community Resource
- Utility/Renewable Energy
- Residential

Easements, Public Lands, and Open Space

- North American Land Trust Easement
- Irvin G. Horner Park (Chesterfield County)

Route Overview Map- Page 2

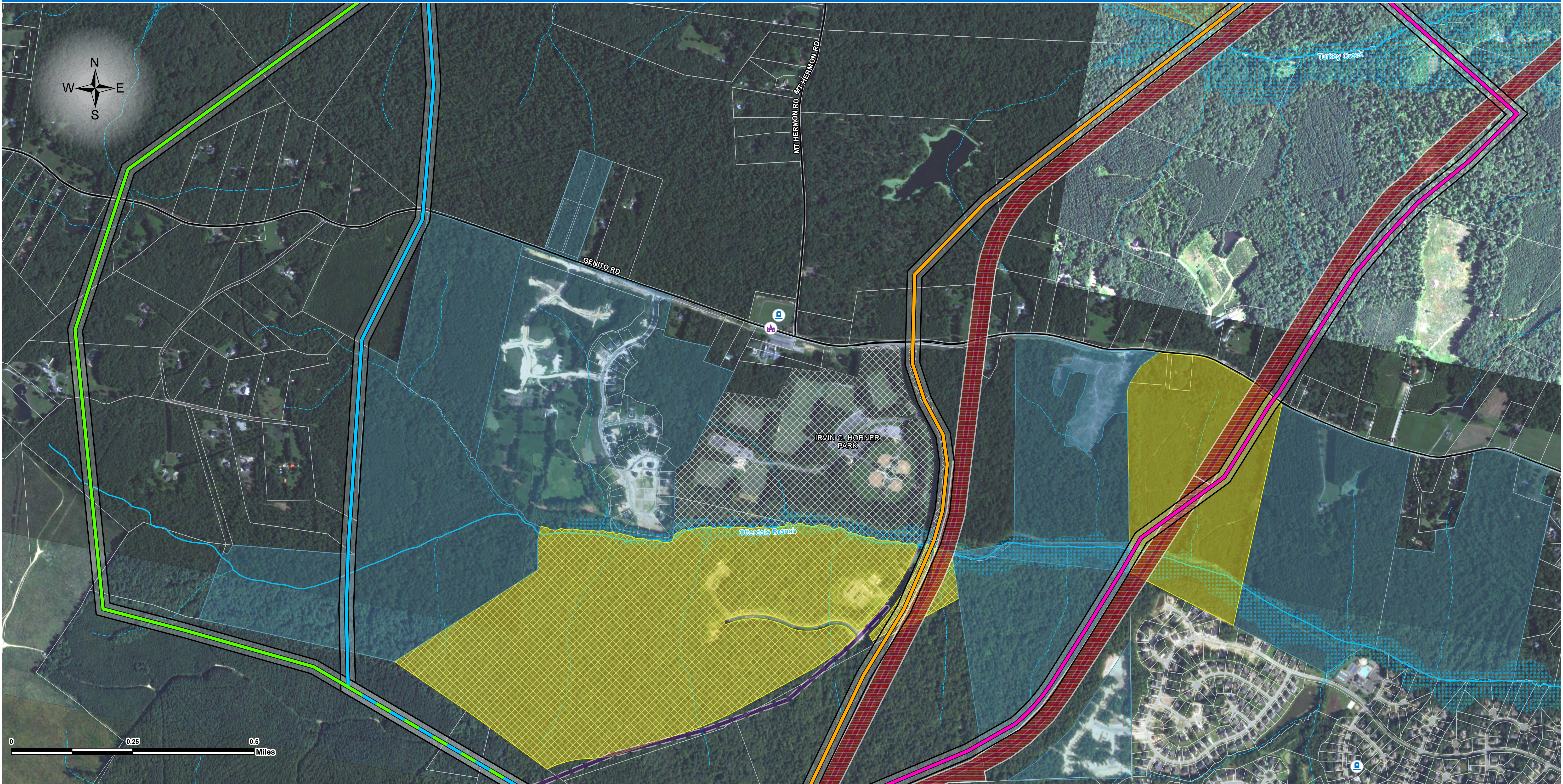
Western Chesterfield 230 kV Electric Transmission Improvement Project Chesterfield and Powhatan Counties, Virginia



Overhead Route Alternatives (160' ROW)			
Route 2A			
Route 2B			
Route 3			
Route Variations			
Mount Hermon Variation Route 2			
Powwhite Parkway Variation			
Railroad Collocation Variation			
Dominion Facilities			
Existing Substation			
Proposed Substation			
Existing Dominion Transmission Line			
Cemeteries, Schools, Places of Worship			
Places of Worship			
Historic Cemetery			
School			
Utility Data			
Existing 16" Colonial Pipeline			
Transportation Features			
Railroad			
Planned Powwhite Parkway			
Project Conceptual Alignments			
Planned Major Arterial/Collector Road			
Natural Resources			
NHD Streams			
FEMA Floodplains			
Planned Developments			
Utility/Renewable Energy			
Residential			
Easements, Public Lands, and Open Space			
North American Land Trust Easement			
Irvin G. Horner Park (Chesterfield County)			

Route Overview Map- Page 3

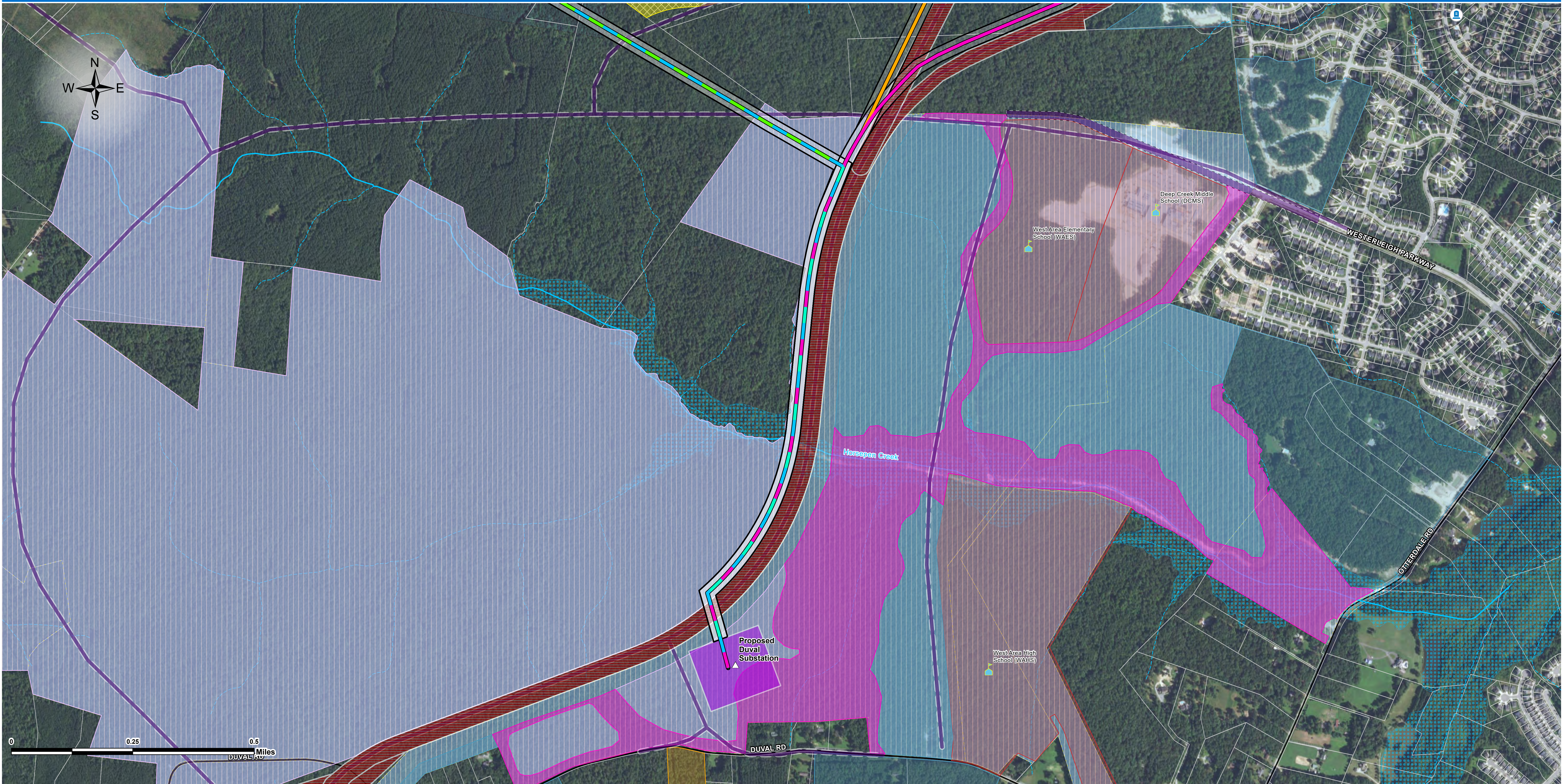
Western Chesterfield 230 kV Electric Transmission Improvement Project Chesterfield County, Virginia



Overhead Route Alternatives (160' ROW) <ul style="list-style-type: none">Route 2ARoute 2BRoute 3 Route Variations <ul style="list-style-type: none">Mount Hermon Variation Route 2Powhite Parkway VariationRailroad Collocation Variation	Dominion Facilities <ul style="list-style-type: none">Existing SubstationProposed SubstationExisting Dominion Transmission Line Cemeteries, Schools, Places of Worship <ul style="list-style-type: none">Places of WorshipHistoric CemeterySchool	Utility Data <ul style="list-style-type: none">Existing 16" Colonial Pipeline Transportation Features <ul style="list-style-type: none">RailroadPlanned Powhite ParkwayProject Conceptual AlignmentsPlanned Major Arterial/Collector Road Natural Resources <ul style="list-style-type: none">NHD StreamsFEMA Floodplains	Planned Developments <ul style="list-style-type: none">Community ResourceUtility/Renewable EnergyResidential Easements, Public Lands, and Open Space <ul style="list-style-type: none">Irvin G. Horner Park (Chesterfield County)
---	---	--	---

Route Overview Map- Page 4

Western Chesterfield 230 kV Electric Transmission Improvement Project Chesterfield County, Virginia



Overhead Route Alternatives (160' ROW)	Dominion Facilities	Utility Data	Planned Developments
Route 2A	Existing Substation	Existing 16" Colonial Pipeline	Community Resource
Route 2B	Proposed Substation	Transportation Features	Utility/Renewable Energy
Route 3	Existing Dominion Transmission Line	Railroad	Industrial
Route Variations	Cemeteries, Schools, Places of Worship	Natural Resources	Easements, Public Lands, and Open Space
Mount Hermon Variation Route 2	Places of Worship	Planned Powhite Parkway	Irvin G. Horner Park (Chesterfield County)
Powhite Parkway Variation	Historic Cemetery	Project Conceptual Alignments	Open Space
Railroad Collocation Variation	School	Planned Major Arterial/Collector Road	Upper Magnolia Green (Chesterfield County EDA)
	Proposed School	NHD Streams	
		FEMA Floodplains	