



Sept. 24, 2024

Proposed Western Chesterfield 230 kV Electric Transmission Improvement Project

Dear Neighbor,

At Dominion Energy, we are committed to providing the reliable, affordable, and increasingly clean energy that powers our customers every day. Western Chesterfield County is outgrowing the current electric distribution network feeding the substantial residential and commercial growth. As such, we are proposing new electric infrastructure to serve the growing needs of the region and maintain reliable electric service with the proposed Western Chesterfield 230 kV Electric Transmission Improvement Project.

The project proposes the following key components:

1. A new substation will be needed to reinforce the electric distribution network.
2. A new electric transmission right of way corridor will be needed to connect the new substation to the existing electric transmission grid.

We are currently in the planning stages of the project; our team is reviewing all electrical and construction options. No routes have been finalized; however, preliminary routes have been identified [see enclosure]. We are now looking for community feedback to refine our conceptual plans.

The process begins with evaluating multiple routing options. Ultimately, we will file an application with the Virginia State Corporation Commission (SCC) with one proposed route, and alternatives for the SCC's review. If approved, the SCC will determine which one route will be selected for us to construct.

Public engagement is a key part of the project planning process. Our team is committed to listening to your feedback and incorporating community perspective prior to filing an application with the SCC in 2025. We plan to hold public meetings beginning in fall 2024 to review the project need, routing details, gather feedback and answer your questions.

More information will be sent in the coming weeks. In the meantime, you can view information about the project on our website, [DominionEnergy.com/westernchesterfieldET](https://www.dominionenergy.com/westernchesterfieldET). You can also contact our project team by email at powerline@dominionenergy.com or by phone at 888-291-0190.

Thank you for your understanding while we plan for long-term reliability investments in your community.

Sincerely,

The Electric Transmission Project Team

Enclosures: Initial routes map, fact sheet

Western Chesterfield 230 kV Electric Transmission Improvement Project

CHESTERFIELD COUNTY, VIRGINIA



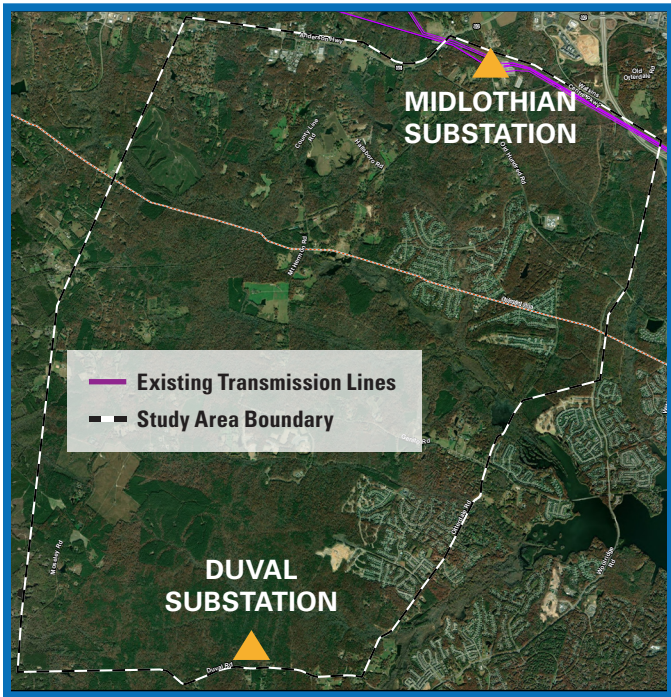
AT DOMINION ENERGY, we are committed to providing the reliable, affordable, and increasingly clean energy that powers our customers every day. Western Chesterfield County has experienced increased energy demands due to residential and commercial growth. Therefore, Dominion Energy is proposing new electric infrastructure to serve the growing needs of the region and maintain reliable electric service with the Western Chesterfield 230 kV Electric Transmission Improvement Project.

This project proposes a new substation and corresponding 230 kV electric transmission lines to connect to the existing electric transmission grid.

QUICK FACTS

- **Location:**
 - The proposed Duval Substation will be located within the Upper Magnolia site off Duval Road.
 - A new electric transmission corridor to place 230 kV electric transmission lines will be routed from our existing Midlothian Substation to the future Duval Substation, approximately 6.5 miles away. Routes are expected to be approximately 7–9 miles in length.
- **Study Area:** The area currently under consideration for new corridors to connect the future substation to an existing transmission line.
- Dominion Energy will review multiple route options for the new 160 ft. wide corridor, and list one proposed route to the Virginia State Corporation Commission (SCC), with alternatives. The SCC will only select one route for the company to construct.
- Overhead, underground, and hybrid (overhead-underground combination) options are under consideration for this project.
- The routes shown in the early stages of the project are subject to change. Stay up to date by visiting our interactive mapping tool on our project website.
- Attend our community meetings or contact our team to share feedback on the routes.

PROJECT STUDY AREA



This map is intended to serve as a representation of the project area and is not intended for detailed engineering purposes.

PROJECT SCHEDULE SUBJECT TO CHANGE

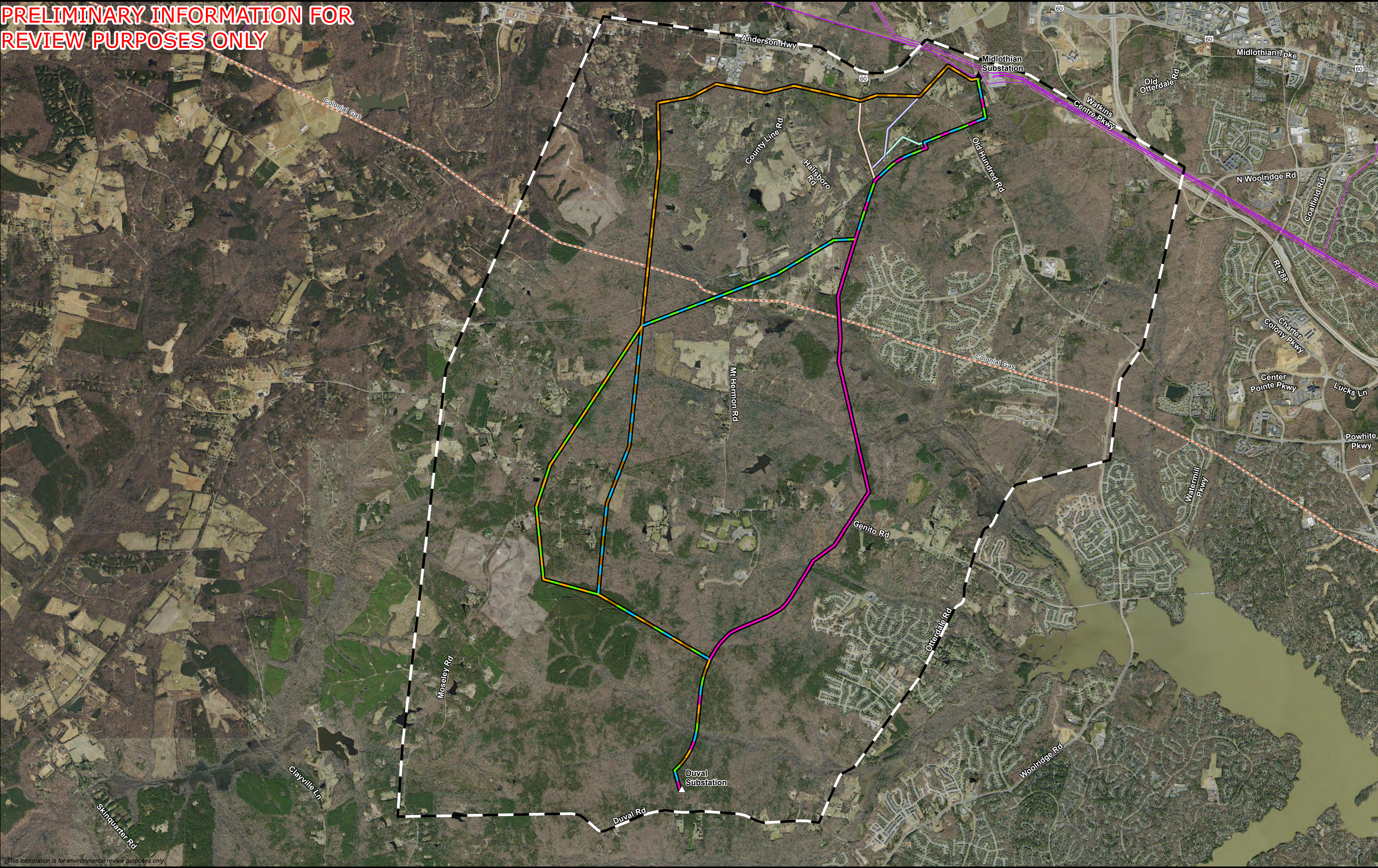
DATE	ACTIVITY
Fall 2024	Project announcement Community Engagement Begins
Early Spring 2025	File application with the Virginia State Corporation Commission (SCC)
Spring 2026	Anticipated SCC ruling
2025 – Summer 2026	<ul style="list-style-type: none">• Permitting• Finalize engineering• Pre-construction outreach
2027 – 2028	Construction

PLANNING FOR FUTURE GROWTH

- Dominion Energy is proposing a 160 ft. wide right of way corridor to accommodate a double-circuit 230 kV electric transmission line to support growing for the upcoming residential and commercial demand.
- This right of way width can accommodate additional circuits in the same corridor if additional load materializes in the western Chesterfield area.

CONTINUED ON BACK

PRELIMINARY INFORMATION FOR
REVIEW PURPOSES ONLY



**Preliminary Overhead
Route Overview**

Western Chesterfield Electric
Transmission Improvement Project
Chesterfield and Powhatan Counties
Virginia

- ▲ Existing Substation
- △ Proposed Substation
- Existing 16" Colonial Pipeline
- Existing Dominion Transmission Lines
- Study Area

Overhead Route Alternatives (160' ROW)

- Route 1A
- Route 1B
- Route 2A
- Route 2B
- Route 3

Mount Hermon Variation (160' ROW)

- Mount Hermon Variation Route 1
- Mount Hermon Variation Route 2
- Mount Hermon Variation Route 3

