

Wishing Star Substation

Willowsford Homeowners Associations
January 26, 2023

Clean Energy – Our Commitment to the Environment



Dominion Energy is taking immediate action to reduce emissions through the development of:

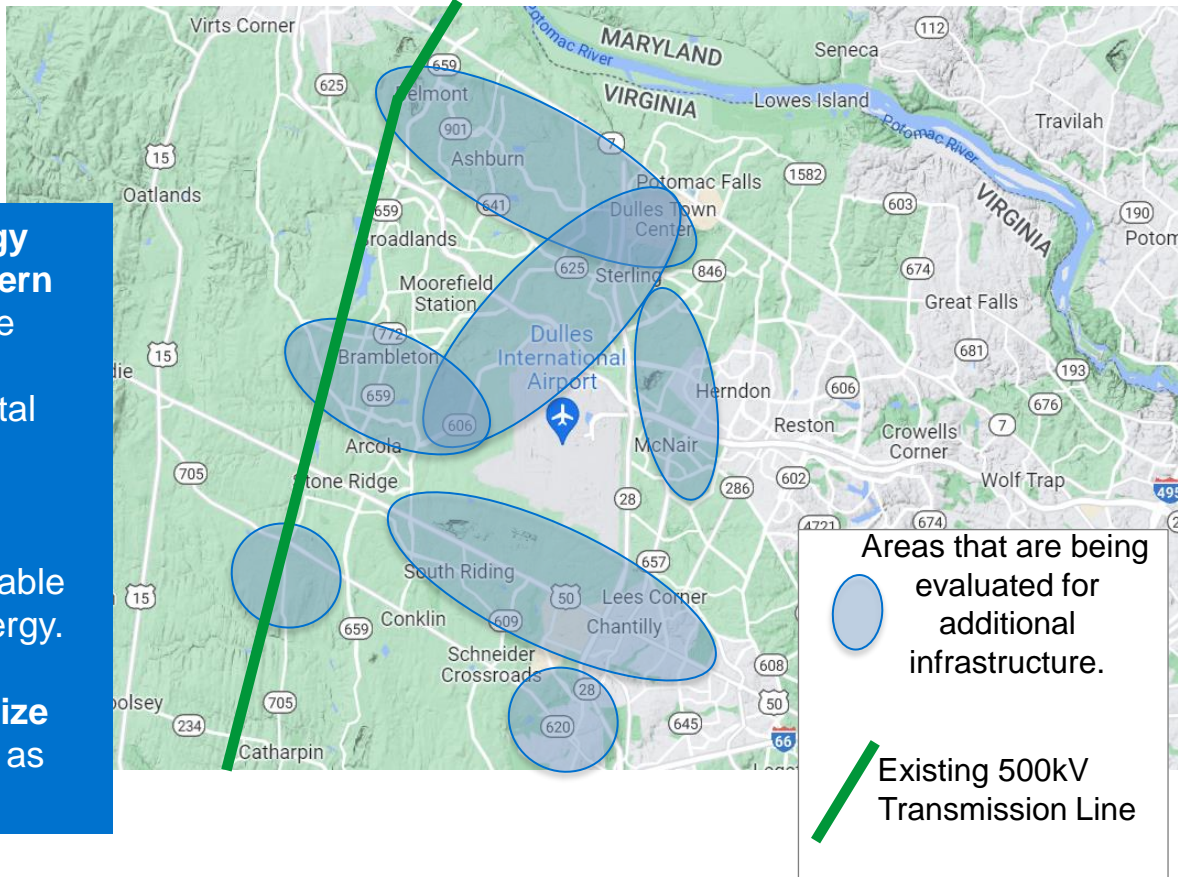
- Solar Generation
- Offshore Wind
- Zero Carbon Nuclear Energy
- Reducing Methane Emissions
- Investing in Innovation

NOVA Reliability

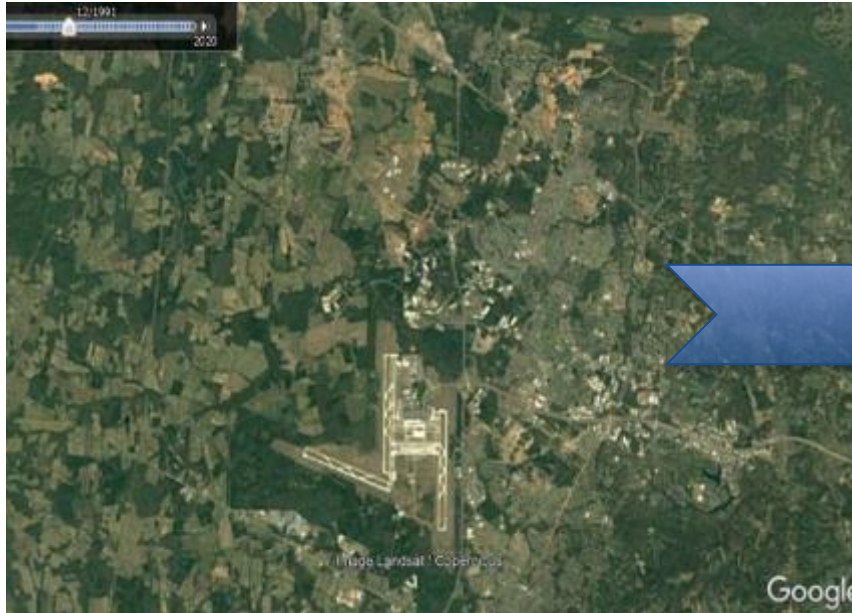
We need to upgrade and add new energy infrastructure in Loudoun and the western areas of Fairfax County to ensure reliable energy supporting residential homes, commercial buildings, data centers, and vital government services.

New electric infrastructure will improve reliability for all regional customers, enable EV growth, and help distribute cleaner energy.

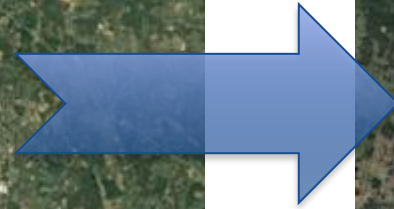
Dominion is exploring all options to minimize community and environmental impacts as much as possible.



Loudoun County Growth

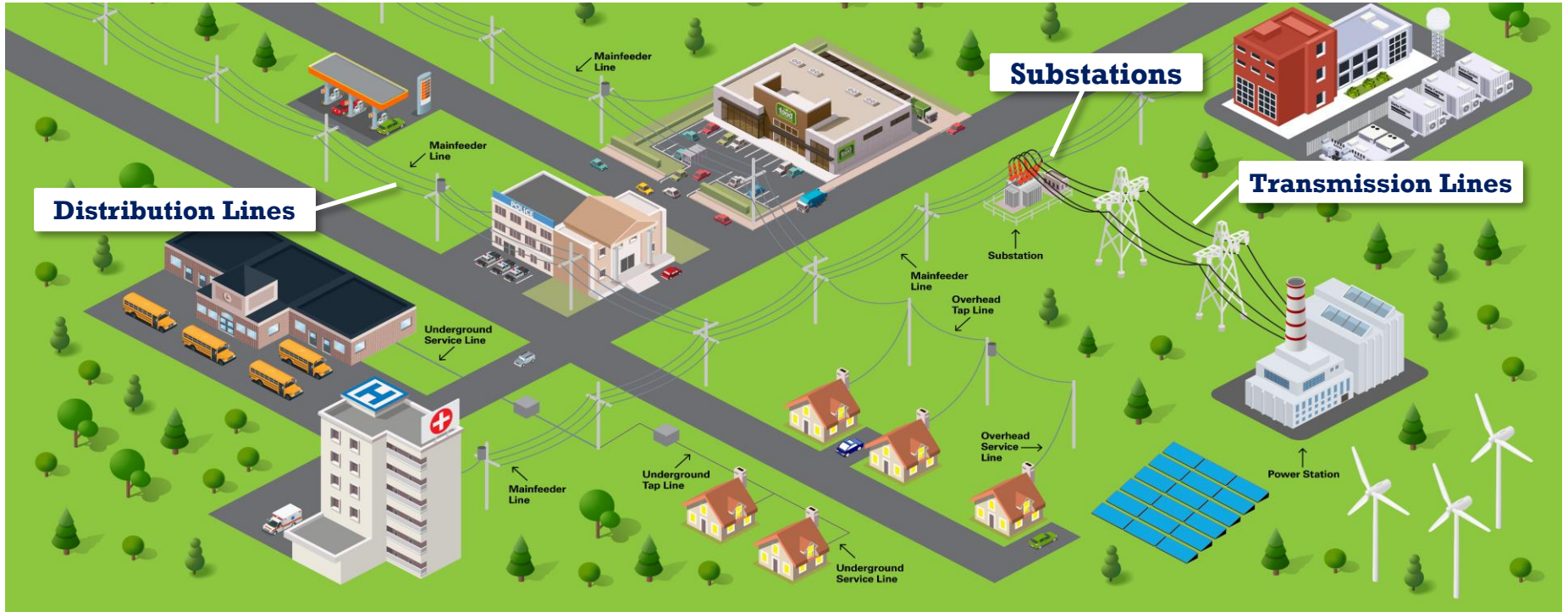


1991



2020

The Electric Grid

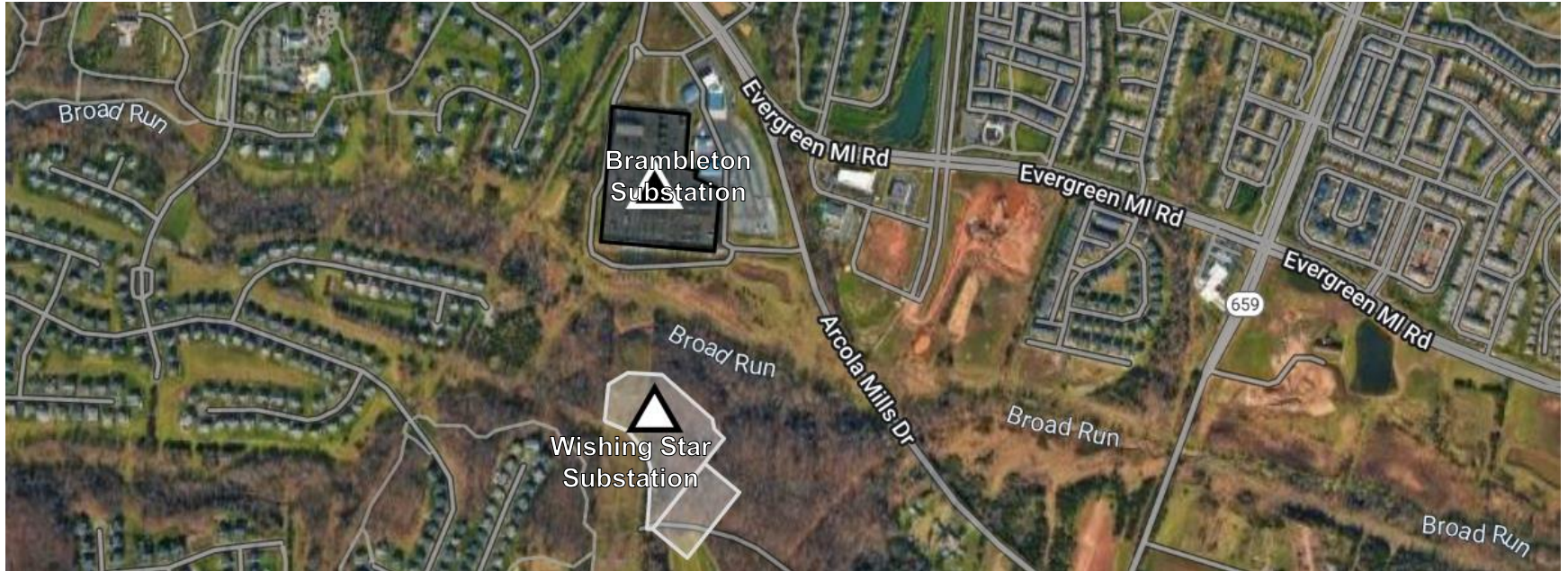


Wishing Star to Mars

- \$715.7 million to construct two substations, a 230 kilovolt (kV) and a 500 kV transmission line.
- The lines will be approximately 3.55 miles in length



Wishing Star Substation



Nearby Residential Communities



Key Dates (Targets)

Oct. 27, 2022 SCC application submitted

Apr. 25, 2023 Requested final order

Sep. 2023 Construction begins

Dec. 2025 Construction completed

Substations Basics



A substation is a facility that changes the voltage of the incoming electricity.

Substations can be:

- Transmission-to-transmission
- Transmission-to-distribution









Substation Aesthetics

- We are committed to working with stakeholders to find location-appropriate visual elements for our substations.
- Substation fences and walls are vetted through a rigorous process to ensure our equipment is protected and operating efficiently.
- All visual enhancements must meet our security and operations standards.

Fence/Wall Type More Info

- 20' DOUBLE MESH**
Multiple paint color options available.
- 20' DECORATIVE WALL**
Multiple pattern and color options available. Use only if highly requested, decorative walls are approximately 74% more expensive than the standard fence.

Wall Pattern More Info

<input type="checkbox"/>  BRICK	<input type="checkbox"/>  PAINTED BRICK	<input type="checkbox"/>  LIME STONE	<input type="checkbox"/>  LEDGE STONE
<input type="checkbox"/>  BRICK-LEDGE MIX	<input type="checkbox"/>  LEDGE STONE PUEBLO	<input type="checkbox"/>  LEDGE STONE CHARCOAL	<input type="checkbox"/>  COBBLE STONE

Substation Security



Physical security measures are in place at our existing and future transmission substations and other critical infrastructure to protect against physical threats and natural disasters.

Reinforced perimeter barriers around substations are designed to defeat attempts to cut through, climb over, or otherwise breach our facilities.

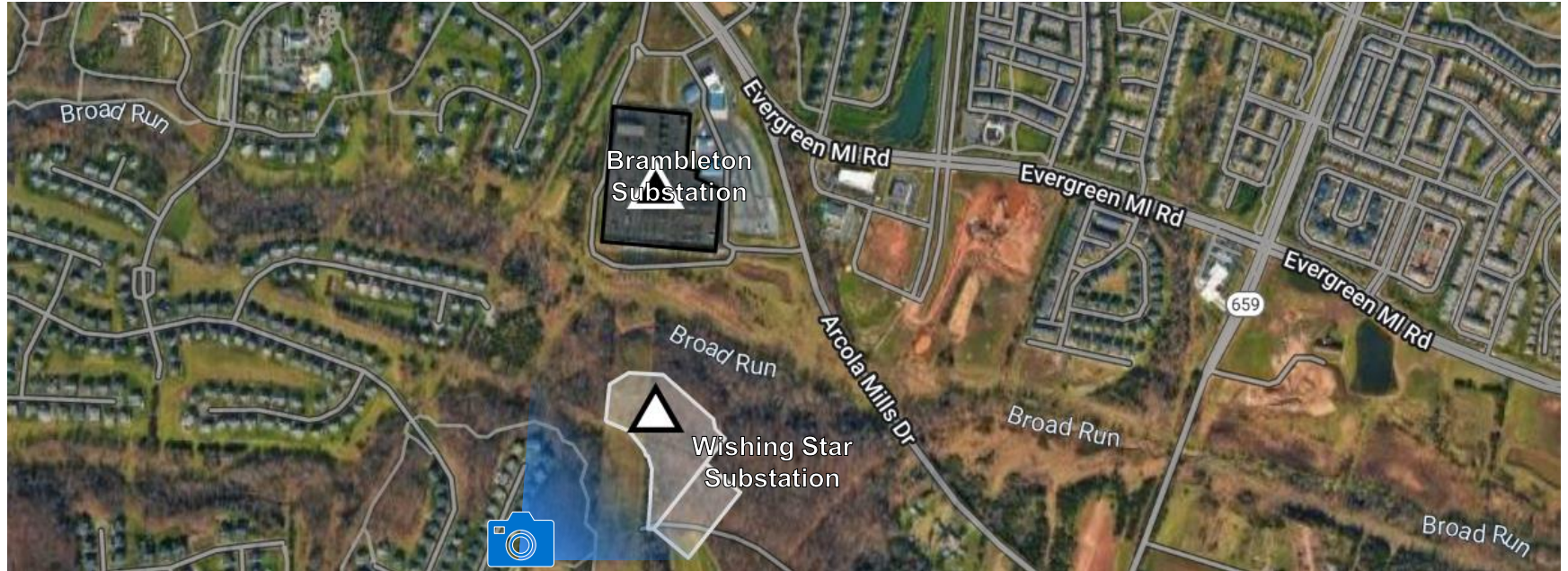
Viewpoint Renderings



View from Marigold Mill Place cul-de-sac



Viewpoint Renderings



Arial View above Weathervane Pl



Overview

