

January 30, 2026

BY ELECTRONIC DELIVERY

K. Beth Clowers, Esq.
Mary B. Adams, Esq.
Andrew F. Major, Esq.
Office of General Counsel
State Corporation Commission
1300 E. Main Street, Tyler Bldg., 10th Fl.
Richmond, VA 23219

Application of Virginia Electric and Power Company for approval and certification of electric transmission facilities: Fentress-Yadkin 500 kV Line #588 Rebuild and New 500 kV Fentress-Yadkin Line #5005

Case No. PUR-2024-00105

Dear Counsel:

Please find enclosed for submission to Commission Staff in the above-captioned proceeding Virginia Electric and Power Company's Report to Staff on Results of Negotiations within the Constraint Design Segment.

Please feel free to reach out if you have any questions or if a follow-up meeting between the Company and Staff would be helpful.

Highest regards,

/s/ Jennifer D. Valaika

Jennifer D. Valaika

Enclosures

cc: Mr. Yousuf Malik
David J. DePippo, Esq.
Charlotte P. McAfee, Esq.
Annie C. Larson, Esq.
Vishwa B. Link, Esq.
Briana M. Jackson, Esq.
Sarah B. Nielsen, Esq.

COMMONWEALTH OF VIRGINIA
STATE CORPORATION COMMISSION

APPLICATION OF)	
)	
VIRGINIA ELECTRIC AND POWER COMPANY)	Case No. PUR-2024-00105
)	
For approval and certification of electric)	
transmission facilities: Fentress-Yadkin 500 kV)	
Line #588 Rebuild and New 500 kV Fentress-)	
Yadkin Line #5005)	

VIRGINIA ELECTRIC AND POWER COMPANY'S
REPORT TO STAFF ON RESULTS OF
NEGOTIATIONS WITHIN THE CONSTRAINT
DESIGN SEGMENT

January 30, 2026

Application of Virginia Electric and Power Company
For approval and certification of electric transmission facilities:
Fentress-Yadkin 500 kV Line #588 Rebuild and New 500 kV Fentress-Yadkin Line #5005
Case No. PUR-2024-00105

Report to Staff on Results of Negotiations within the Constraint Design Segment

Introduction and Background

On June 13, 2024, Virginia Electric and Power Company (“Dominion Energy Virginia” or the “Company”) filed with the State Corporation Commission (“Commission”) an application and supporting documents (the “Application”)¹ for a certificate of public convenience and necessity (“CPCN”) pursuant to § 56-46.1 of the Code of Virginia (“Va. Code” or “Code”) and the Utility Facilities Act, Va. Code § 56-265.1 *et seq.*, to rebuild the Company’s existing 13.5-mile overhead single circuit 500 kilovolt (“kV”) Line #588, which is approaching its end of service life (“Line #588 Rebuild”); construct a new 13.5-mile overhead single circuit 500 kV Line #5005 originating at the Company’s existing Fentress Substation and terminating at the existing Yadkin Substation (“Fentress-Yadkin Line #5005” or “Line #5005”); and perform substation-related work at the Company’s existing Fentress and Yadkin Substations, all within the City of Chesapeake, Virginia. The Line #588 Rebuild, the Fentress-Yadkin Line #5005, and the substation-related work at the Fentress and Yadkin Substations are collectively referred to as the “Project.”²

The Project is needed in order to maintain the structural integrity and reliability of its transmission system in compliance with mandatory North American Electric Reliability Corporation (“NERC”) Reliability Standards by addressing the condition of Line #588, which is approaching its end of service life, through the rebuild of existing infrastructure.³ In addition, the Project will support generator deliverability by allowing generation to reliably and successfully integrate with the transmission system, thereby allowing the Company to maintain the overall long-term reliability of the transmission system for its customers.⁴ The desired in-service target date for the proposed Project is January 1, 2027.⁵

As noted in the Application, the total length of the existing corridor, which is currently maintained at 150 feet in width, is approximately 13.5 miles.⁶ While the 13.5-mile right-of-way currently is maintained at 150 feet, for approximately 5.7 miles from the existing Fentress Substation to Structure #588/223, the Company’s easements are 235 feet in width.⁷

¹ As defined herein, the “Application” includes the Appendix, Direct Testimony, DEQ Supplement and supporting documents filed on June 13, 2024, as well as the errata filed by the Company on November 22, 2024, and the Company’s January 2, 2025 supplemental filing.

² Ex. 2 Application at ¶ 3.

³ Ex. 2 Application at ¶ 3 and ¶ 4.

⁴ *Id.*

⁵ Ex. 2 Appendix at Section I.H at 33.

⁶ Ex. 2 Application at ¶ 5.

⁷ Ex. 2 Application at n.4. For the remaining 7.8 miles to the existing Yadkin Substation, the existing Line #588 right-of-way is 150 feet wide. *Id.*

For construction of the Line #588 Rebuild and proposed Line #5005, the Company proposed to replace all the existing single circuit 500 kV structures supporting Line #588 from Structure #588/186A to Structure #588/254 with two side-by-side single circuit 500 kV dilled galvanized steel monopole structures in order to support the rebuilt Line #588 and proposed Line #5005 entirely within the existing 13.5-mile right-of-way currently maintained at 150 feet wide (the “Proposed Design”).⁸

Within the 13.5-mile right-of-way, an approximately 1.6-mile segment between Structures #588/240 and #588/249 is subject to easement constraints that limit the proposed Line #588 and Line #5005 structure heights to 150 feet. This segment sits within the 5.7-mile portion of right-of-way that is 235 feet wide but maintained at 150 feet. Prior to filing the Application, the Company began coordinating with landowners along this 1.6-mile segment to remove the constraints and construct the Project as proposed, noting that, in the event the height constraints could not be removed, that 1.6-mile segment would require two side-by-side single circuit 500 kV monopoles in a delta configuration (the “Constraint Design”), necessitating use and clearing of the full 235-foot-wide right-of-way (the “Constraint Design Segment”).⁹ The delta configuration is not the Company’s or Commission Staff’s (“Staff”) preferred configuration.¹⁰ Instead, the Company and Staff prefer the structures as proposed in the Application that utilize the 150-foot-width of right-of-way that the Company currently maintains. For that reason, the Company continued coordinating with landowners for removal of the easement constraints after filing the Application and throughout the course of the proceeding.

In an effort to continue coordination after issuance of the Final Order, Company Witness Lane E. Carr’s rebuttal testimony stated the Company’s request that:

[T]o the extent the Company reaches agreements with landowners along a contiguous segment or segments of the Constraint Design Segment, the Company requests the Final Order allow the Company to construct the Project along the contiguous segment or segments as proposed in the Application, meaning without the Constraint Design Segment. For those segments where the Company is unable to reach agreement with landowners for a contiguous segment or segments, the Company requests the Final Order direct it to proceed with construction of the Project as set forth in the Application for the Constraint Design Segment, meaning with the delta configuration. The Company will notify Staff once all negotiations with landowners are complete and will work with Staff on reporting the final configuration of structures within that 1.6-mile segment of the Proposed Route.¹¹

⁸ Ex. 2 Appendix at Section I.F at 24.

⁹ A delta configuration means arms on both sides of the structures as shown in Appendix Attachment I.F.1, as compared to the proposed structures shown in Appendix Attachment II.A.5.b. See Ex.2 Appendix at 24-26, 207-208.

¹⁰ Ex. 8 Staff Report at Summary; 23.

¹¹ Ex. 6 Carr at 6-7.

At the hearing, the Company requested the following with respect to its negotiations with landowners regarding the Constraint Design Segment:

- (1) Continue discussions and negotiations with landowners through 2025;
- (2) Provide Staff with a map, similar to the Appendix Attachment II.B.3.d map that would be specific to the 1.6-mile segment after completion of the discussions in 2025;
- (3) The map would identify each section along the 1.6-mile segment of the Proposed Route that would utilize the structures for the Project as proposed (meaning in those areas where the Company successfully negotiated removal of the easement constraints with a contiguous segment of landowners) and the delta configured monopoles for the Constraint Design Segment (meaning in those areas where the Company has been unable to successfully negotiate removal of the easement constraints with a contiguous segment of landowners);
- (4) The map will indicate the varying right-of-way widths (150-foot-wide versus 235-foot-wide) depending on whether the structures as proposed or the delta configured monopoles are used along each contiguous segment; and,
- (5) The Company will provide the updated map to Staff no later than January 31, 2026.¹²

Constraint Design Segment Reporting Requirement

The January 30, 2025, Report of M. Renae Carter, Senior Hearing Examiner (“Hearing Examiner Report” or “Report”) thoroughly summarized the history of the case, the record, and the applicable law, and also included an analysis of the record and a presentation of Findings and Recommendations.¹³ On February 28, 2025, the Commission issued its Final Order approving the Project in this case. In relevant part, the Commission adopted Finding No. (6) of the Report, which states:

Any Commission approval for the Project should provide flexibility for the Company to continue, through the end of 2025, negotiations with landowners along the Constraint Design Segment, with the provisions that (i) the Project’s in-service date not be impacted by the negotiations, and (ii) the Company tender to Staff, by January 31, 2026, a report on the results of these negotiations with the information the Company has proposed for inclusion therein[.]¹⁴

In accordance with the Commission’s February 28, 2025 Final Order, the Company submits this report on the results of the negotiations with the landowners along the 1.6-mile Constraint Design Segment to Staff.

¹² Tr. 14:13-15:14 (Nielsen).

¹³ Report at 26-28 (Findings and Recommendations).

¹⁴ Report at 6.

Outreach and Negotiations with Landowners

The approximately 1.6-mile Constraint Design Segment traverses the Lakes of Etheridge, Etheridge Pointe, and Glasser Landing neighborhoods and includes approximately 40 parcels subject to a 1973 easement limitation capping electric transmission structure heights at 150 feet. Specifically, under that limitation: (i) poles and wires may not exceed 150 feet; (ii) wire transitions will remain compliant with the easement restriction; (iii) some vegetation removal is required; and (iv) full right-of-way clearing is required for vegetation presenting risk to the lines.

Following the Final Order, the Company continued to conduct extensive outreach to inform landowners of the preferred design and its benefits, and to seek removal of the height restriction to enable use of taller structures entirely within the 150-foot maintained right-of-way (*i.e.*, the Proposed Design) rather than the shorter delta-configured structures (*i.e.*, the Constraint Design), which requires a 235-foot-wide right-of-way. This outreach included meetings and other in-person engagement, phone calls, targeted mailings, and other informational materials made available to landowners:

- ***Construction Access Postcard*** mailed to all landowners within public outreach Phase 3 of Project construction,¹⁵ which includes the landowners in the Constraint Design Segment in June 2025 and available on the Company's website (www.dominionenergy.com/yadkin-fentress) (Attachment 1).
- ***Project Fact Sheet*** updated in June 2025 and made available to all landowners along the Project route at meetings and in door-to-door outreach, as well as on the Company's website (www.dominionenergy.com/yadkin-fentress) (Attachment 2) until updated and replaced in September 2025.
- ***Meeting Details Postcard*** mailed to undecided landowners within the Constraint Design Segment on June 30, 2025 (17 recipients at that time), with details of the upcoming meeting on July 10, 2025 (Attachment 3). Prior to mailing this postcard in June 2025, the Company's Real Estate representatives personally contacted undecided landowners to "save the date" and be on the lookout for the invitation in the mail.
- **Meeting** held on July 10, 2025 with seven of the undecided landowners within the Constraint Design Segment in attendance, representing four parcels.
- ***Easement Progress Update*** presented to landowners at the meeting held on July 10, 2025 (Attachment 4).
- ***Constraint Design Segment Fact Sheet*** prepared in July 2025 that initially was made available to landowners in the Constraint Design Segment within public outreach Phase 3 of the Project route at meetings and in door-to-door outreach (Attachment 5), until updated and replaced in September 2025, when it was uploaded in final, public format on the Company's website (www.dominionenergy.com/yadkin-fentress).
- **Door-to-Door Outreach** by the Company's Real Estate and Communications representatives with both the decided and undecided landowners within the Constraint

¹⁵ The Company notes that the public outreach "Phase 3" of Project construction noted herein and in Attachment 1 hereto correlates to the permitting "second phase" of Project construction described on page 11 of the Appendix, which extends between Structure #588/226-254 and between Structure #5005/43-72 for approximately 5.1 miles.

Design Segment on Corby Glen Avenue and Broadwinsor Crescent on August 5, 2025, so as to ensure that all of the landowners within this segment understood the potential outcome of the negotiations if 100% consent was not received.

- **Community Office Hours Postcard** mailed to all landowners within the Constraint Design Segment of the Project route on August 13, 2025, with the Company's Community Office Hours on August 21, 2025 ([Attachment 6](#)).
- **Community Office Hours** available to all landowners within the Constraint Design Segment of the Project route on August 21, 2025. Two attendees from the Constraint Design Segment came.
- **Meeting Details Postcard** mailed to all landowners and nearby properties within the Constraint Design Segment on September 2, 2025, with details of the upcoming meeting on September 17, 2025 ([Attachment 7](#)). Information about this meeting was also posted publicly on the Company's website (www.dominionenergy.com/yadkin-fentress).
- **Meeting** held on September 17, 2025 with eight landowners along the Constraint Design Segment in attendance.
- **Project Fact Sheet** updated in September 2025 that was made available to landowners within the Project route at meetings, as well as on the Company's website (www.dominionenergy.com/yadkin-fentress) ([Attachment 8](#)).
- **Constraint Design Segment Fact Sheet** updated in September 2025 that was made available to landowners within the Project route, including the Constraint Design Segment at meetings, as well as on the Company's website (www.dominionenergy.com/yadkin-fentress) ([Attachment 9](#)).
- **Constraint Design Segment Update** presented to landowners at the meeting held on September 17, 2025, and also made available on the Company's website (www.dominionenergy.com/yadkin-fentress) ([Attachment 10](#)).
- **Simulation Boards** of the Constraint Design Segment updated in June 2025 that initially were made available in July 2025 to landowners within the Constraint Design Segment of the Project route at meetings and in door-to-door outreach, and in September 2025 were added on the Company's website with the September 17, 2025 meeting materials (www.dominionenergy.com/yadkin-fentress) and in GeoVoice (<https://geovoice.wsp.com/dominion/Yadkin-Fentress/#modal-sims>) ([Attachment 11](#)).
- **Tree Clearing Graphic** of the Constraint Design Segment prepared in June 2025 that was made available to landowners within the Constraint Design Segment of the Project route at meetings and in mailers, as well as in September 17, 2025 meeting materials on the Company's website (www.dominionenergy.com/yadkin-fentress) ([Attachment 12](#)).
- **Project Update Postcard** regarding upcoming vegetation and tree removal resulting from the outcome of Constraint Design Segment notifications that was mailed to all landowners within the Constraint Design Segment of the Project route on December 30, 2025, and added on the Company's website (www.dominionenergy.com/yadkin-fentress) ([Attachment 13](#)).

- ***Other Informational Materials*** were provided on the Company's website (www.dominionenergy.com/safety/rights-of-way-usage-and-safety) as well as at all of the meetings, including brochures generally related to the construction process, right-of-way easements, and approved shrub species within easements.

As a result of the Company's outreach efforts, 35 of 44 affected landowners have executed updated easements removing the height restrictions, enabling the Company's Proposed Design along a contiguous, approximately 1.0-mile portion of the original 1.6-mile Constraint Design Segment. This allows the Company to maintain a 150-foot right-of-way, reduce overall environmental impacts to the area, and minimize vegetation removal.

The Company will implement the Constraint Design in the remaining 0.6 mile of the 1.6-mile Constraint Design Segment utilizing delta-configured monopoles, which will require clearing of the full 235-foot-wide existing right-of-way in order to stay within the 150-foot height easement restriction. This 0.6-mile segment that will utilize the Constraint Design falls between Structures #588/245 and #588/246.

See Attachment 14 for an updated map that depicts, for each contiguous section of the segment, where the Proposed Design will be used versus where Constraint Design will be used, along with the corresponding 150-foot or 235-foot right-of-way widths.

Conclusion

Through sustained outreach and negotiation occurring since pre-filing and extending past issuance of the Final Order, the Company secured removal of the 1973 easement height restriction from 35 of 44 landowners' parcels along the 1.6-mile Constraint Design Segment, enabling construction of the Proposed Design along two contiguous segments totaling approximately 1.0 mile. The remaining approximately 0.6-mile contiguous segment will be constructed utilizing the Constraint Design. Accordingly, as of this submission, the Company has begun foundation installation along the approximately 0.6-mile Constrained Design Segment in preparation for the Project's scheduled outages and in order to maintain the proposed in-service date for the Project of January 1, 2027, along the Project route as noticed in the Application.



Dominion Energy image. Not project specific.

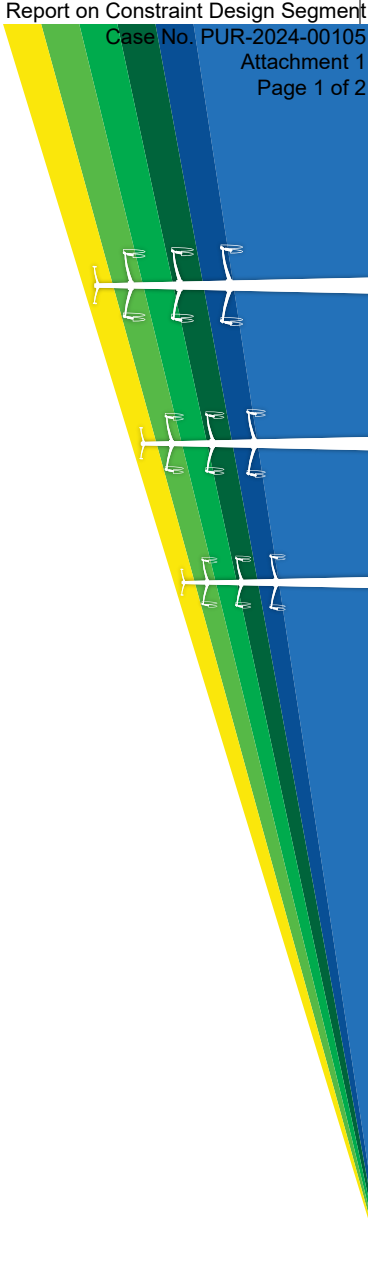


Electric Transmission
P.O. Box 26666
Richmond, VA 23261

**Learn more about upgraded transmission lines
in the City of Chesapeake, Virginia.**



**SCAN HERE
TO LEARN
MORE**



We are working in your community

Yadkin-Fentress 500 kV Electric Transmission Project

At Dominion Energy, we provide the reliable, affordable, and increasingly clean energy that powers your every day. We are replacing 13.5 miles of an existing 500 kilovolt (kV) transmission line with two 500 kV lines between our Yadkin and Fentress substations in the City of Chesapeake, Virginia. This project will maintain reliability of the transmission system and integrate new electric generation with the grid.

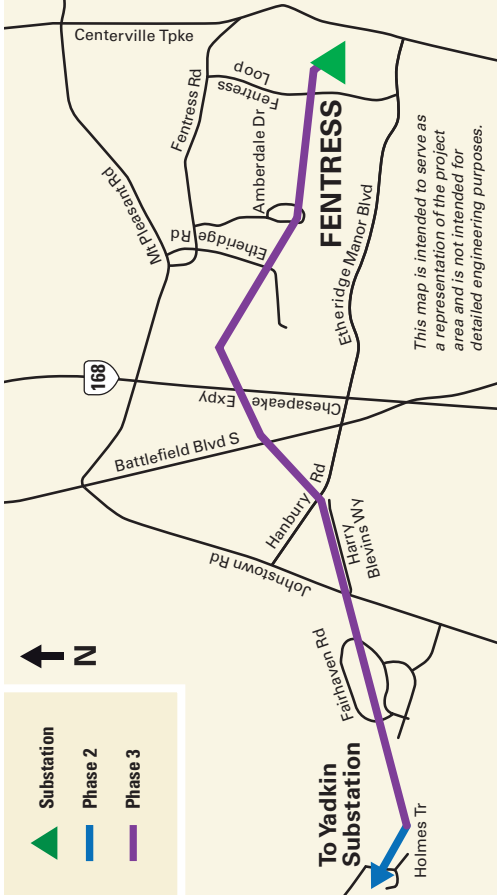
Preconstruction activities on Phase 3 of the project, between Holmes Trail and Fentress Substation, will begin this summer. We will install access to the right of way, which may include gravel or wooden mats. We expect construction in Phase 3 to occur between fall 2025 and late 2026, followed by right of way restoration.

We take responsibility for acting courteously in your community and proactively minimizing impacts. Some residents' yards may require a safety perimeter, which will serve as reminders of the work zone boundaries and help keep you safe while we work on and over your property.

This safety perimeter will be customized for individual yards. Where possible, we will minimize removal of private permanent fencing. During overhead activities, we want you to be able to use as much of your yard as safely feasible.

If you have questions about access installation or what temporary safety perimeter is best for your property, feel free to contact us. Email us at powerline@dominionenergy.com, or call 1-888-291-0190.

To learn more about this project, we invite you to scan the QR code to access GeoVoice, our structure comparison tool. Thank you for your patience as we work on this important reliability project.



Protecting the grid against natural and man-made acts is a top priority. You can learn more about our commitment to safety at powerlines101.dominionenergy.com.



SCAN HERE
TO LEARN
MORE

CONTACT US

Website: DominionEnergy.com/Yadkin-Fentress
Phone: 888-291-0190
Email: powerline@dominionenergy.com

PHASE 3 CONSTRUCTION SCHEDULE

June 2025: Access installation begins
October 2025: Foundation and structure installation begins
March 2026: Wire installation begins
June 2026: Finish rebuilding Line 588
December 2026: Finish building Line 5005

Schedule is subject to change pending final approvals, permits, weather, and progress. Upon completion, we will restore the right of way.



Crews
in your area



New
infrastructure



Work
in your area

Yadkin-Fentress 500 kV Electric Transmission Project City of Chesapeake, Virginia

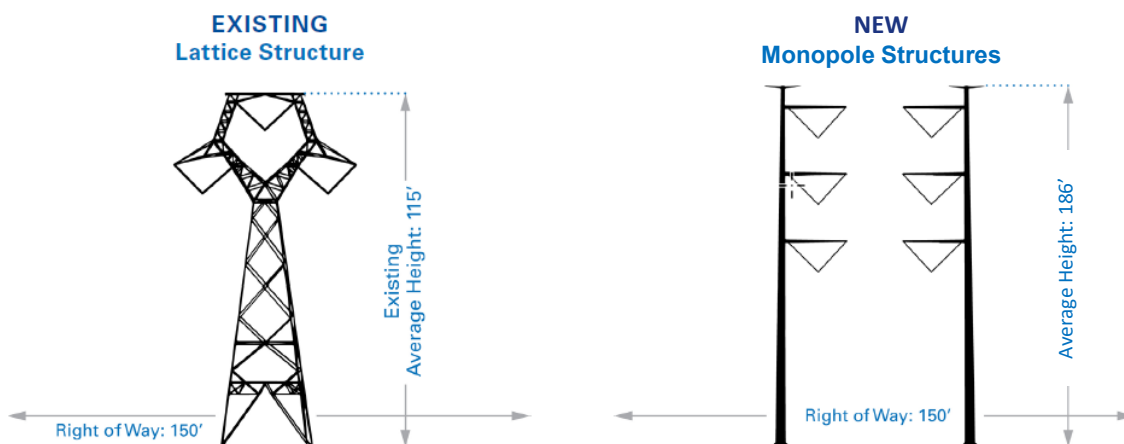


This project will rebuild an existing line (#588) and will build a new line (#5005.) This work will maintain system reliability and successfully integrate new electric generation with the current transmission system.



Project Fast Facts:

- 13.5 miles between Yadkin and Fentress substations.
- Plan to use existing, maintained right of way.*
**Pending easements on 1.6-mile Constraint Design Segment (235 feet wide existing right of way)*
- The existing lattice tower structures with one 500 kV line will be replaced by 2 dull galvanized monopole structures with two 500 kV lines.
- New monopoles will be an average of 186 feet tall, which is 71 feet taller than the existing structures.
- Where possible, new poles will be placed in similar locations as the existing structures.



Want to know more? Go to GeoVoice!

- GeoVoice is your key to discovering more about the new structures along the route.
- Search for a specific address to see proximity to structures.
- Leave a message for the project team.
- A project team member may follow up for any additional details or discussion. **What matters to you, matters to us.**
- Scan the QR code or find GeoVoice on the project website.



website: [DominionEnergy.com/Yadkin-Fentress](https://www.dominionenergy.com/Yadkin-Fentress)

email: powerline@dominionenergy.com **phone:** 888-291-0190

¿Habla español? Escanee este código QR o visite [DominionEnergy.com/Yadkin-Fentress](https://www.dominionenergy.com/Yadkin-Fentress) para solicitar estos documentos en español.

Yadkin-Fentress 500 kV Electric Transmission Project City of Chesapeake, Virginia



This project will rebuild an existing line (#588) and will build a new line (#5005.) This work will maintain system reliability and successfully integrate new electric generation with the current transmission system.



Project Timeline:

- Phase 1 will be completed in 2025, except for a few structures at I-64/Yadkin Substation in 2026.
- Phases 2 and 3 will begin in spring and summer 2025, starting from Yadkin Substation and working towards Fentress Substation.
- Line #588 will be rebuilt by June 2026. Crews will then double-back to finish building Line #5005 in Phases 2 and 3 by December 2026.

Schedule is subject to change pending final approvals, permits, weather, and progress.

Line
#588

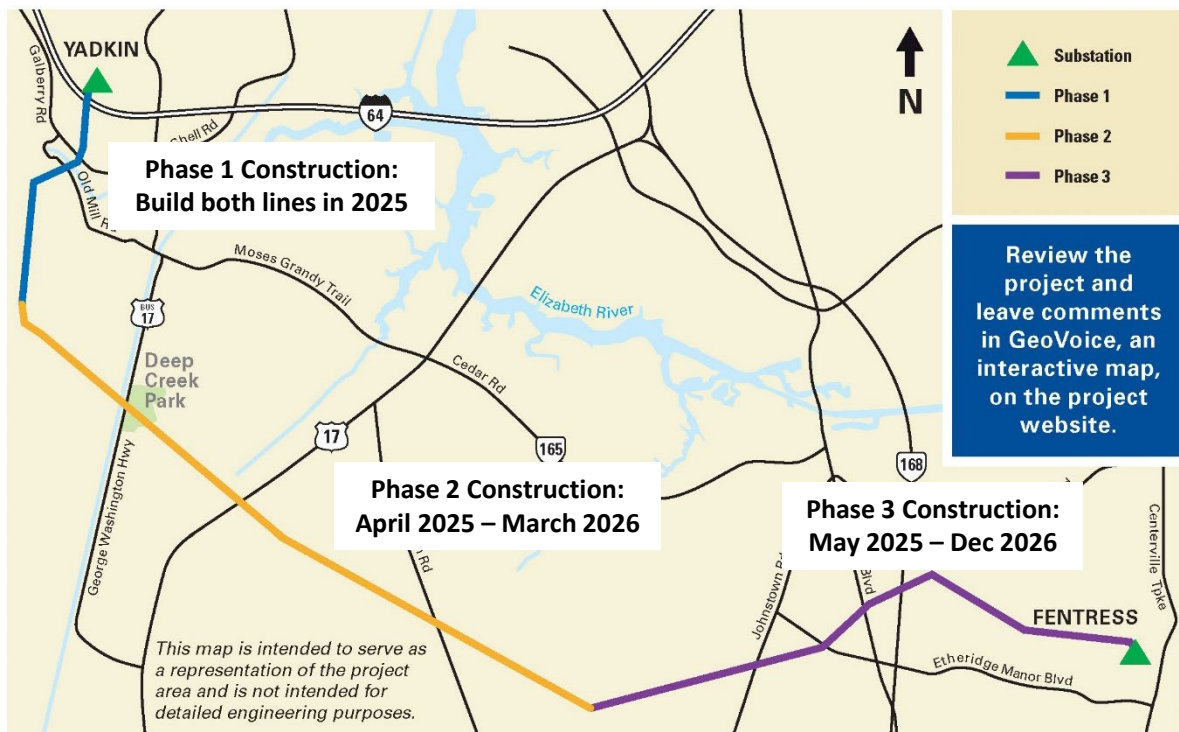
March - July 2025:
Yadkin -Weiss Lane

April 2025 - June 2026:
Appaloosa Tr - Fentress

Line
#5005

March - Sept 2025:
Yadkin -Weiss Lane

April 2025 - Dec 2026:
Appaloosa Tr - Fentress



website: [DominionEnergy.com/Yadkin-Fentress](https://www.dominionenergy.com/Yadkin-Fentress)

email: powerline@dominionenergy.com **phone:** 888-291-0190

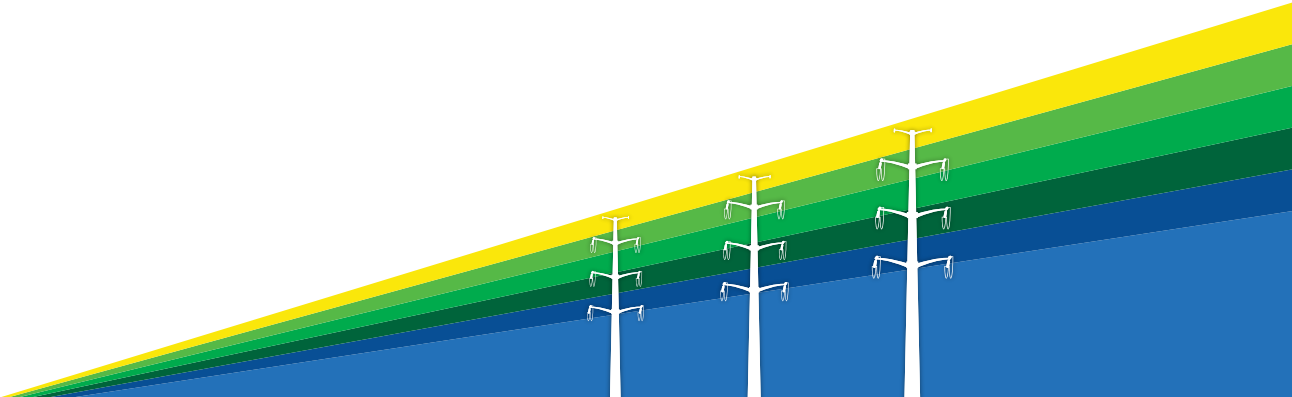


Electric Transmission
P.O. Box 26666
Richmond, VA 23261

Learn more about upgraded transmission lines
in the City of Chesapeake, Virginia.



SCAN HERE
TO LEARN
MORE



Investing in
Our Communities



Dominion Energy image. Not project specific.

Join us for a community update

Yadkin-Fentress 500 kV Electric Transmission Project

At Dominion Energy, we provide the reliable, affordable, and increasingly clean energy that powers your every day. We are replacing 13.5 miles of an existing 500 kilovolt (kV) transmission line with two 500 kV lines between our Yadkin and Fentress substations in the City of Chesapeake, Virginia. This project will maintain reliability of the transmission system and integrate new electric generation with the grid.



SCAN HERE
TO LEARN
MORE

We want to provide an update on the 1.6-mile portion of the project called the “Constraint Design Segment” near you. To stay consistent with the rest of this project, we prefer to construct this segment with structures 177-192 feet tall within the existing 150-foot-wide right-of-way. However, the original 1973 easement has a 150-foot height restriction on the transmission poles. This easement affects approximately 40 present-day parcels in the Lakes of Etheridge, Etheridge Pointe and Glasser Landing neighborhoods and prevents Dominion from building taller structures. **If 100% of the affected property owners do not agree to update their easement to remove the 1973 height restriction, we must clear all trees within the entire 235-foot-wide right of way to build the Constraint Design Segment with shorter structures.**

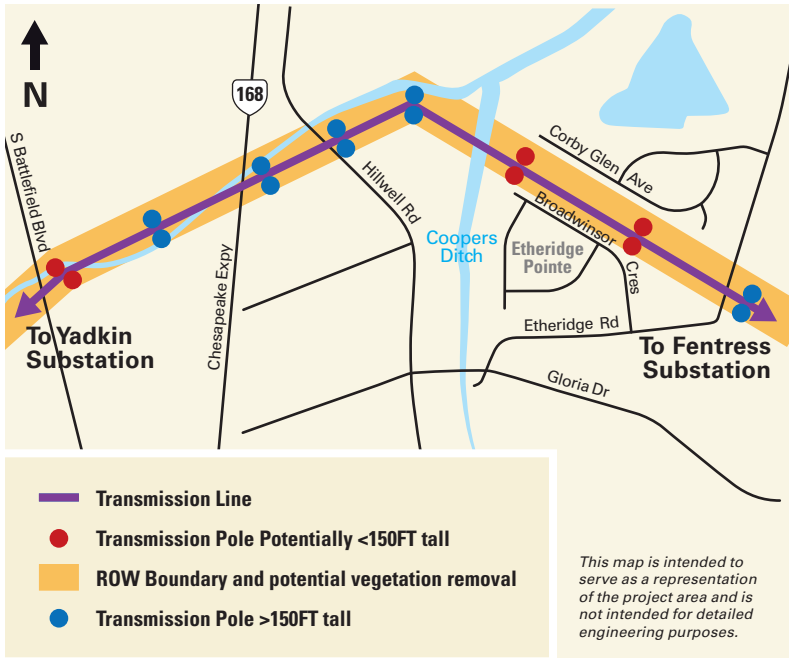
We have worked to minimize impacts to our neighbors as much as feasible. Through ongoing real estate

negotiations and creative engineering modifications, we have shortened the potential Constraint Design Segment to two structures east of S Battlefield Boulevard and four structures between Etheridge Pointe and Etheridge Road. The map shows the six structures where we will need to shorten the pole heights to 150 feet tall. The map also shows the additional 85 feet of right-of-way that will need to be cleared if the Constraint Design Segment must be constructed.

To comply with safety regulations, any vegetation within the 235-foot-wide right of way that poses a risk to the new power lines will be removed. Additionally, some tall trees outside the right of way may need to be removed from front yards on Corby Glen Avenue and Oakford Crescent because of proximity to the new wires.

Whether or not you decide to update your easement, work for Phase 3 of the Yadkin-Fentress project will progress in late summer. **We are hosting a community meeting for our undecided neighbors who are impacted by the potential Constraint Design Segment.** We invite you to learn more, speak directly with the project team, and receive property-specific information from real estate, right of way, forestry, and construction representatives. If you are unable to attend, please contact us and we will be glad to schedule a meeting one-on-one to assist with your decision.

We will update you and your neighborhood of the easement status as information becomes available.



Protecting the grid against natural and man-made acts is a top priority. You can learn more about our commitment to safety at powerlines101.dominionenergy.com.



EXISTING CONDITIONS



PROPOSED CONDITIONS

Photo simulations are for discussion purposes only. Final design is subject to change pending public, engineering, and regulatory review.

MEETING DETAILS

Thursday, July 10, 2025

Dinner: 5:30 p.m. – 6:00 p.m.
(Families are welcome. Please contact us in advance if you have dietary restrictions.)

Presentation: 6:00 p.m. – 6:20 p.m.

Open House: 6:20 p.m. – 7:30 p.m.
(Discussion continues in an open house format).

Dominion Energy Office
801 S. Battlefield Blvd.
Chesapeake, Virginia 23322-4261



Save
the date



Ask
questions



In person
meeting

CONTACT US

Website: DominionEnergy.com/Yadkin-Fentress
Email: powerline@dominionenergy.com
Phone: 888-291-0190

Yadkin – Fentress 500 kV Electric Transmission Line Project in the City of Chesapeake, Virginia Easement Progress Update Thursday, July 10, 2025



**Dominion
Energy®**

Project Team



Carrie
Communications



Frank
Project Manager



Lane
Siting and Permitting



Melissa
Right of Way



Lonnie
Transmission Lines



Cliff
Access



Jen
Forestry



Heather
Environmental
Permitting

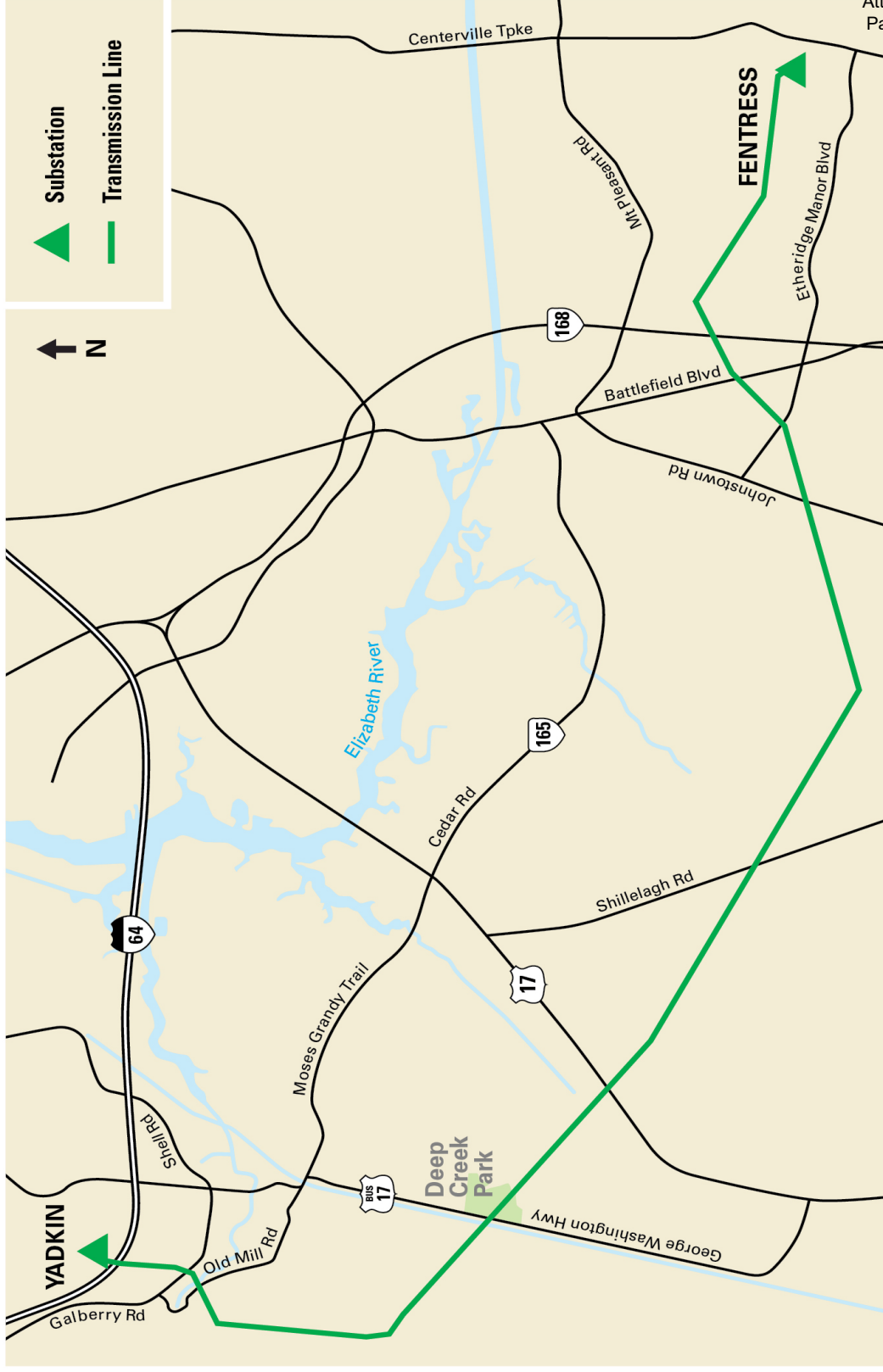
**Steve
Ben
Nathan**
Real Estate

Project Overview

- **NEED:** To maintain structural integrity and reliability of the transmission system, and to integrate new electric generation with the transmission system
- **TO DO:** Replace the existing overhead single circuit 500 kV electric transmission line with two new overhead single circuit 500 kV transmission lines between our Yadkin and Fentress substations

• QUICK FACTS:

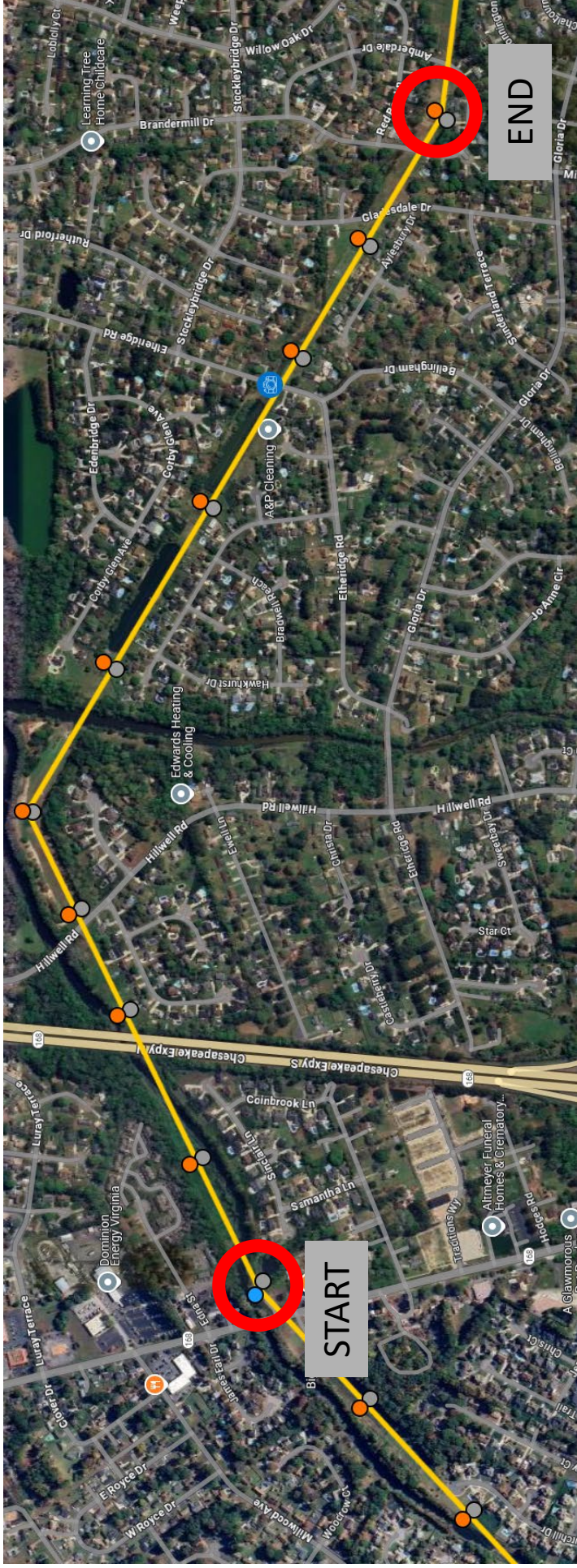
- ~13.5 miles long
- Plan to use existing, maintained 150-foot-wide right of way
- Rebuild Line #588 – end of life
- New Build Line #5005 – new generation interconnection



Constraint Design Segment

Fast Facts

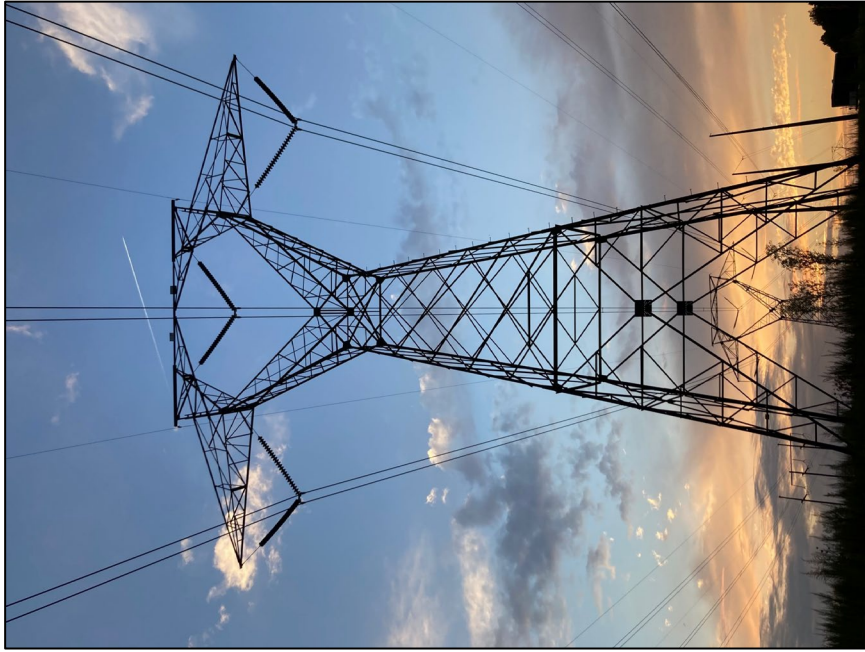
- Affects ~40 present-day parcels in the Lakes of Etheridge, Etheridge Pointe and Glasser Landing neighborhoods
- Has a height restriction: transmission poles can't exceed 150 FT
- Use existing, maintained 150-foot-wide right of way
- Build taller structures to match the rest of the project



Structures

Existing

- Weathering Steel Lattice
- Single-Circuit 500 kV (Line #588)
- Average structure height: 115 feet
- Built in 1975



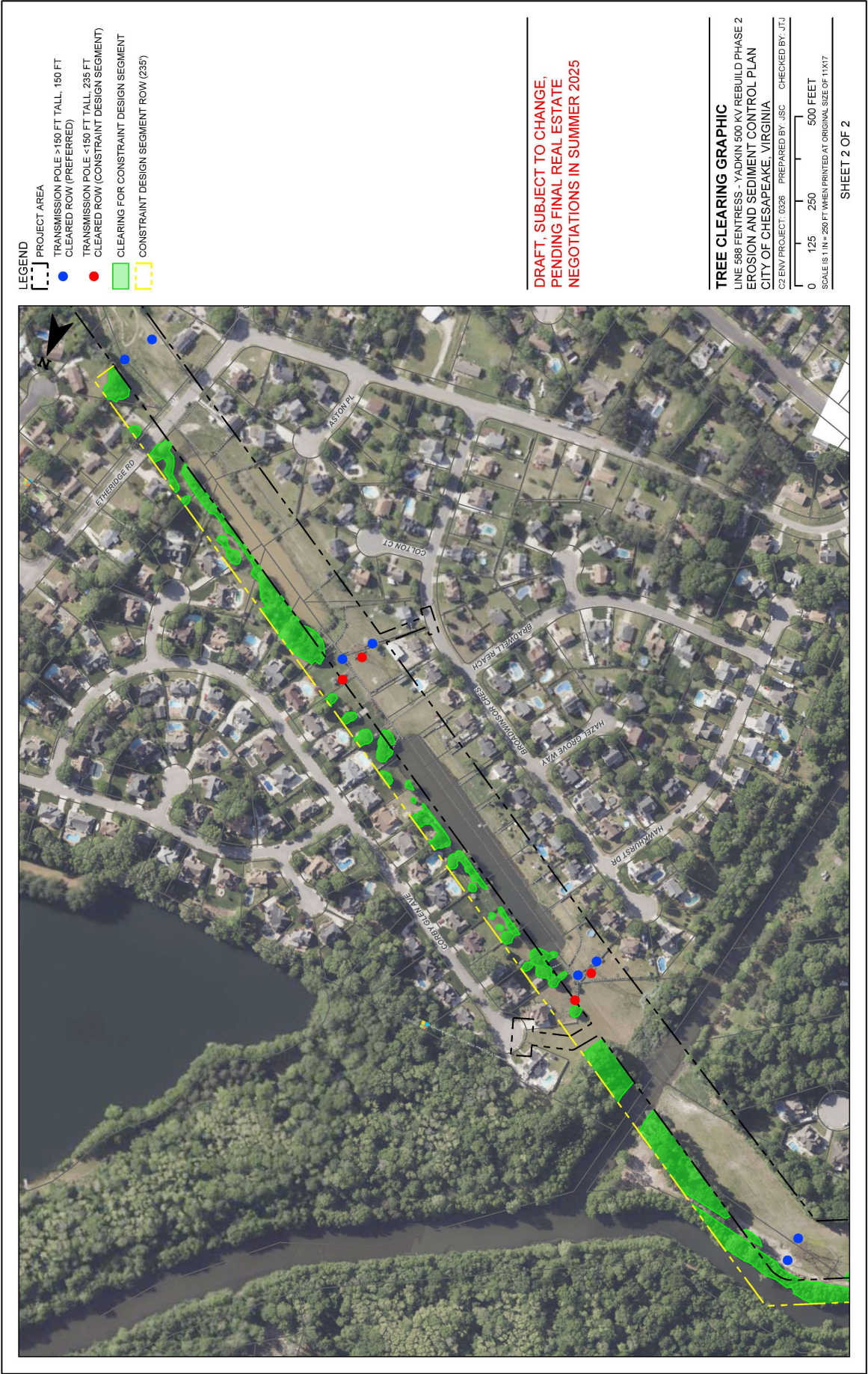
- Min height 175 FT*
- Max height 210 FT

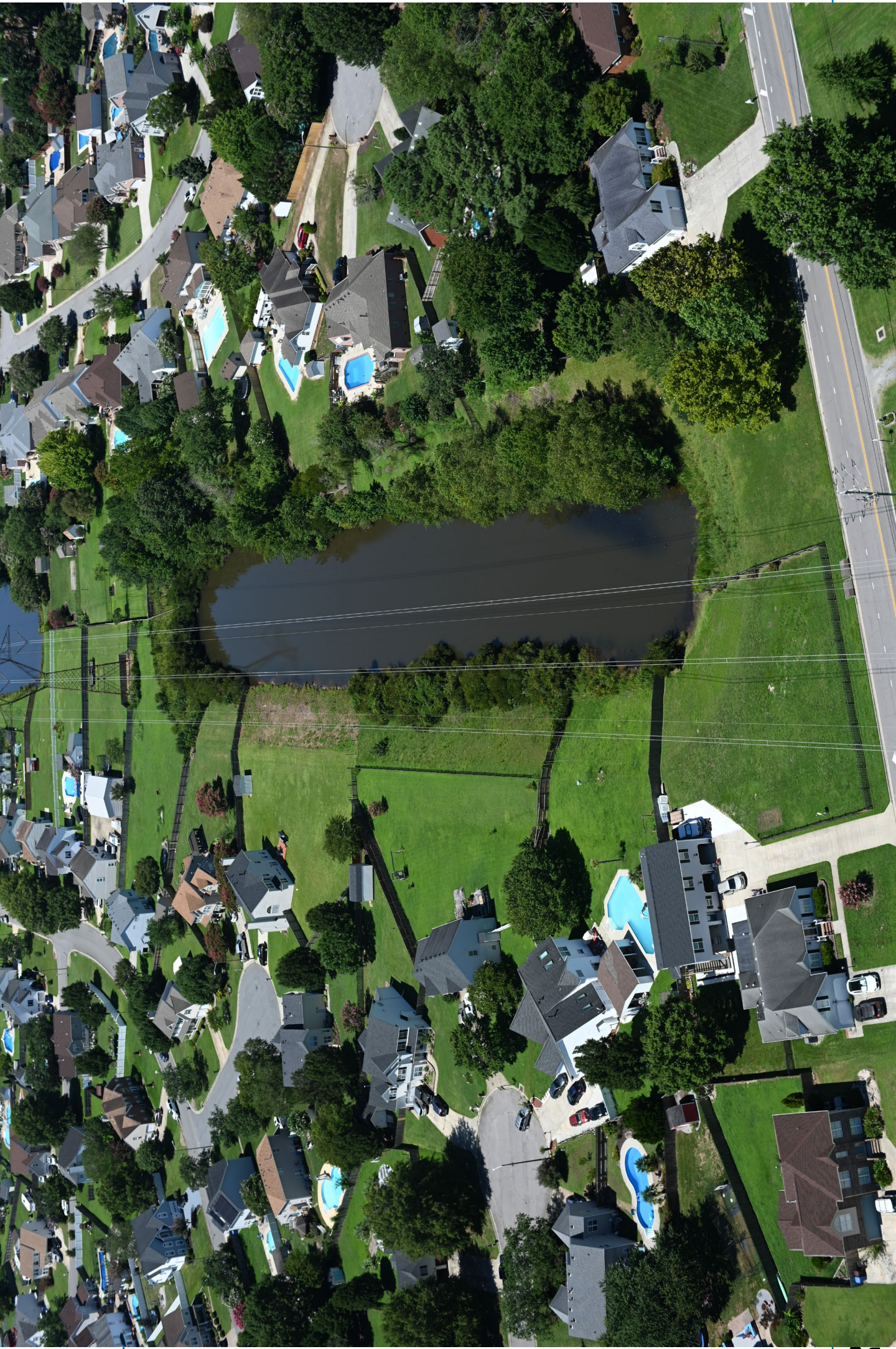


Constraint Design Solution – O&M will maintain/remove vegetation over time

Vegetation Removal

Constraint Design Solution – O&M will maintain/remove vegetation over time







Approximate area
of concern for tree
removal:

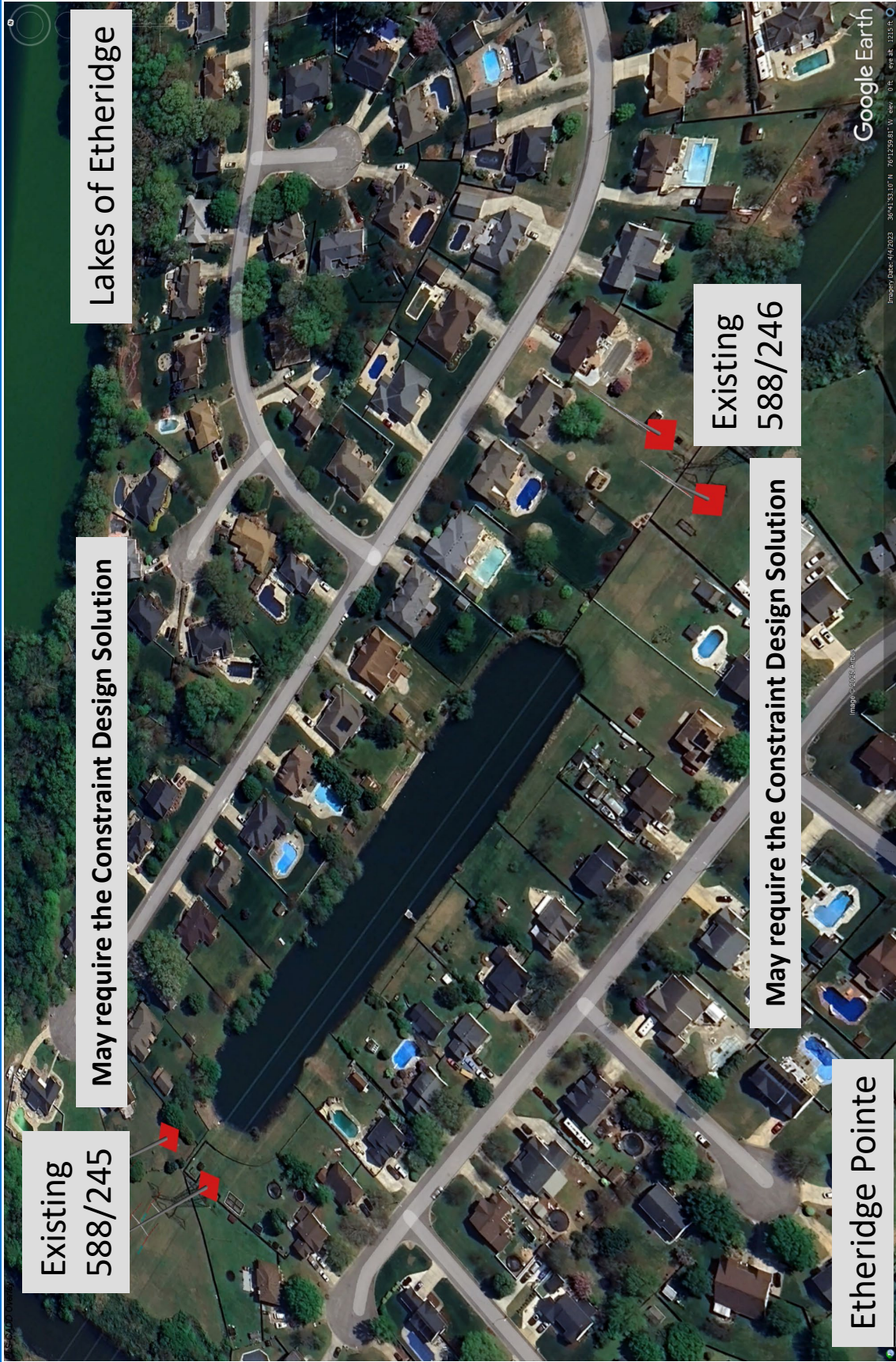
- 235 FT existing
right of way
- Any sited trees
tall enough to
threaten the
wires



Approximate area
of concern for tree
removal:

- 235 FT existing
right of way
- Any sited trees
tall enough to
threaten the
wires

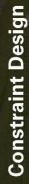
Affected Area in Lakes of Etheridge and Etheridge Pointe



Photosimulation at Etheridge Road Looking Northwest – O&M will maintain/remove vegetation over time

Transmission Line Project

Date: 6/30/2023 **Time:** 9:05 am **Viewing Direction:** Northwest



Comparing Constraint Design & Preferred Solutions

Preferred Design

- Structure height: 177 to 192 feet
- Existing right of way: 150-foot-wide
- Vegetation removal:
 - *Mostly* within the right of way
 - Preserves more vegetation within the unmaintained 235-foot-wide right of way
- More removal is required within right of way
- Some tall trees outside the right of way may need to be removed from *front yards* on Corby Glen Avenue and Oakford Crescent due to proximity to new wires

The Virginia State Corporation Commission authorized Dominion Energy to build either solution in its Final Order for this project.

What's Next?

Final Real Estate Negotiations

- Easements must be signed no later than **August 15, 2025**
- If we have **100% consent**, we will build the **Preferred Solution** within the existing maintained 150-foot-wide right of way
- If we do **not achieve 100% consent**, we must build the **Constraint Design Solution** within the existing 235-foot-wide right of way
- We will hold a community meeting on August 21 to publicly share the outcome with neighbors

**Questions?
Let's Discuss!**

Thank you for your time!

Please connect with your Real Estate representative to complete easement negotiations.

Yadkin-Fentress 500 kV Electric Transmission Project City of Chesapeake, Virginia



This project will rebuild an existing line (#588) and will build a new line (#5005.) This work will maintain system reliability and successfully integrate new electric generation with the current transmission system. Constraint Design Segment construction begins in fall 2025 and ends in late 2026.



Constraint Design Segment Fast Facts:

- 1.6-miles long section between Battlefield Boulevard South and Etheridge Road
- Original 1973 easement:
 - Affects ~40 present-day parcels in the Lakes of Etheridge, Etheridge Pointe and Glasser Landing neighborhoods
 - Has a height restriction: transmission poles cannot exceed 150 feet tall
 - Existing right of way here is 235 feet wide. Historically, we have maintained vegetation in only 150 feet of this right of way for the existing transmission line.
- *All easements here must be updated to remove the height restriction* for us to build the preferred design and *minimize vegetation removal* impacts in the neighborhood.
- Regardless of which design we build, *all encroachments within the 235-foot-wide right of way must be remediated or authorized by Dominion Energy Right of Way.*

Preferred Design	Constraint Design
Taller structures with a smaller footprint	Shorter structures with a wider footprint
New structure heights: 177 to 192 feet	New structure heights: 150 feet (maximum)
Existing, maintained footprint: 150-foot-wide	Uses full 235-foot-wide right of way
Vegetation removal: <ul style="list-style-type: none"> • Mostly within the existing, maintained 150-foot-wide right of way • Preserves more vegetation within the unmaintained right of way along Corby Glen Avenue and Oakford Crescent 	Vegetation removal: <ul style="list-style-type: none"> • More removal is required from full 235-foot-wide right of way • Some tall trees outside the right of way may need to be removed from front yards on Corby Glen Avenue and Oakford Crescent due to proximity to new wires
If we have 100% property owner consent to remove the height restriction, we will build the Preferred Solution within the existing maintained 150-foot-wide right of way.	If we do not achieve 100% property owner consent, we must build the Constraint Design Solution within the existing 235-foot-wide right of way, clearing more vegetation.

The Virginia State Corporation Commission authorized Dominion Energy to build either solution in its Final Order for this project.

website: [DominionEnergy.com/Yadkin-Fentress](https://www.dominionenergy.com/Yadkin-Fentress)
email: powerline@dominionenergy.com **phone:** 888-291-0190



YADKIN TO FENTRESS

Transmission Line Project

Viewpoint 10B

Date: 6/30/2023 Time: 9:05 am Viewing Direction: Northwest
Viewpoint Location Transmission Line



LEGEND

- PROJECT AREA
- TRANSMISSION POLE >150 FT TALL, 150 FT CLEARED ROW (PREFERRED)
- TRANSMISSION POLE <150 FT TALL, 235 FT CLEARED ROW (CONSTRAINT DESIGN SEGMENT)
- CLEARING FOR CONSTRAINT DESIGN SEGMENT
- CONSTRAINT DESIGN SEGMENT ROW (235')

TREE CLEARING GRAPHIC
LINE 588 FENTRESS - YADKIN 500 KV REBUILD
EROSION AND SEDIMENT CONTROL PLAN
CITY OF CHESAPEAKE, VIRGINIA
C2 ENV PROJECT: 0326 PREPARED BY: JSC CHECKED BY: JTJ

0 125 250 500 FEET
SCALE IS 1 IN = 250 FT WHEN PRINTED AT ORIGINAL SIZE OF 11X17



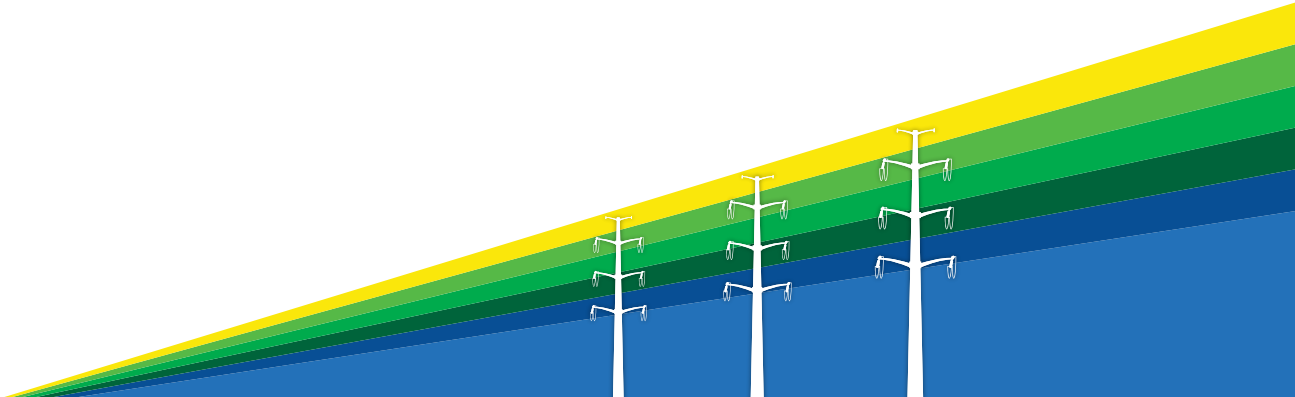


Electric Transmission
P.O. Box 26666
Richmond, VA 23261

Learn more about upgraded transmission lines
in the City of Chesapeake, Virginia.



SCAN HERE
TO LEARN
MORE



Investing in
Our Communities



Dominion Energy image. Not project specific.

Join us for community office hours

Yadkin-Fentress 500 kV Electric Transmission Project

At Dominion Energy, we provide the reliable, affordable, and increasingly clean energy that powers your every day. 13.5 miles of an existing 500 kilovolt (kV) transmission line will be replaced by two 500 kV lines between our Yadkin and Fentress substations in the City of Chesapeake, Virginia. This project will maintain reliability of the transmission system and integrate new electric generation with the grid.



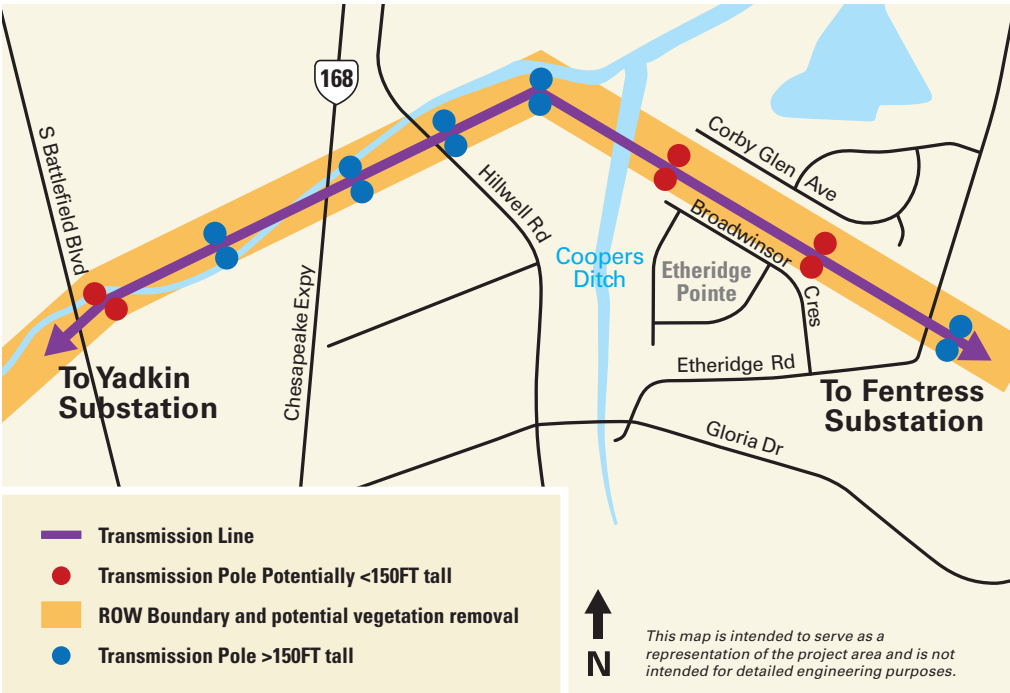
SCAN HERE
TO LEARN
MORE

You are invited to connect with project representatives to discuss a portion of the project near you called the “Constraint Design Segment.” The original easement on this segment has a height restriction on utility poles. To minimize vegetation removal in your neighborhood, all easements here must be updated to release the transmission pole height restriction.

Regardless of pole height, all encroachments within the existing 235-foot-wide right of way must be remediated or authorized by Dominion Energy Right of Way.

We are hosting community office hours for neighbors in the Constraint Design Segment. You are invited to learn more, speak directly with the project team, and receive property-specific information. If you are unable to attend, please contact us and we will be glad to assist with your decision by the end of summer. You and your neighborhood will be invited to a community meeting in early fall 2025 to learn the outcome of easement negotiations.

Whether or not you decide to update your easement, work for Phase 3 of the Yadkin-Fentress project will progress. In your neighborhood, construction access will be installed between late September and mid-October 2025. Foundations will be installed between November 2025 and March 2026. Poles will be placed in spring 2026. We are on pace to complete line work in summer 2026 in your neighborhood.



Protecting the grid against natural and man-made acts is a top priority. You can learn more about our commitment to safety at powerlines101.dominionenergy.com.



EXISTING CONDITIONS



PROPOSED CONDITIONS

Photo simulations are for discussion purposes only. Final design is subject to change pending public, engineering, and regulatory review.

COMMUNITY OFFICE HOURS

Thursday, August 21, 2025,
3:00 p.m. – 7:00 p.m.

There is no formal presentation;
please come when
convenient for you

Dominion Energy Office
801 S. Battlefield Blvd.
Chesapeake, Virginia 23322-4261



Save
the date



Ask
questions



In person
meeting

CONTACT US

Website: DominionEnergy.com/Yadkin-Fentress
Email: powerline@dominionenergy.com
Phone: 888-291-0190

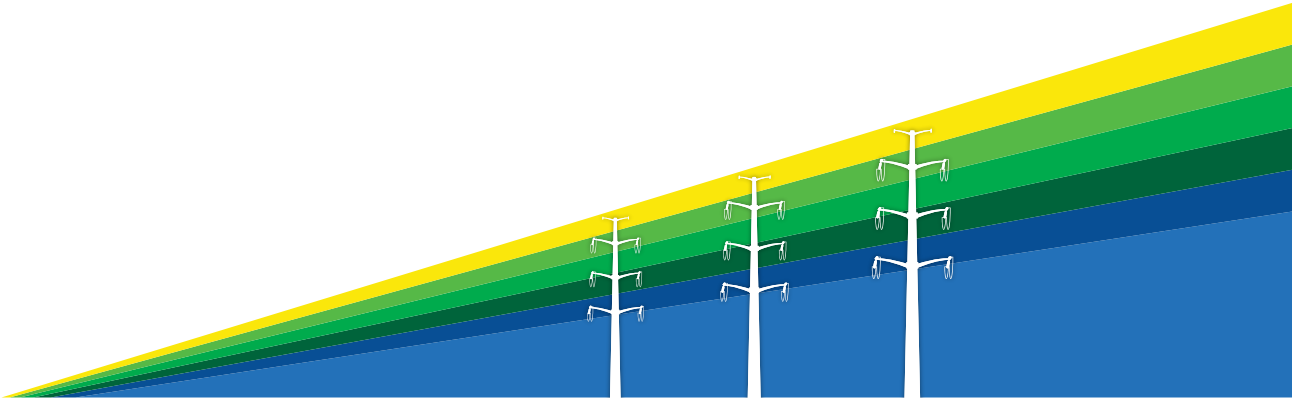


Electric Transmission
P.O. Box 26666
Richmond, VA 23261

Learn more about upgraded transmission lines
in the City of Chesapeake, Virginia.



SCAN HERE
TO LEARN
MORE



Investing in
Our Communities



Join us for a community update

Yadkin-Fentress 500 kV Electric Transmission Project

At Dominion Energy, we provide the reliable, affordable, and increasingly clean energy that powers your every day. 13.5 miles of an existing 500 kilovolt (kV) transmission line will be replaced by two 500 kV lines between our Yadkin and Fentress substations in the City of Chesapeake, Virginia. This project will maintain reliability of the transmission system and integrate new electric generation with the grid.

There's a portion of the project near you called the "Constraint Design Segment." The original easement on this segment has a height restriction on utility poles, which could affect the vegetation within the right of way corridor. Although real estate negotiations and creative engineering modifications have minimized the Constraint Design Segment impacts as much as possible, we would still like to discuss these impacts with you.



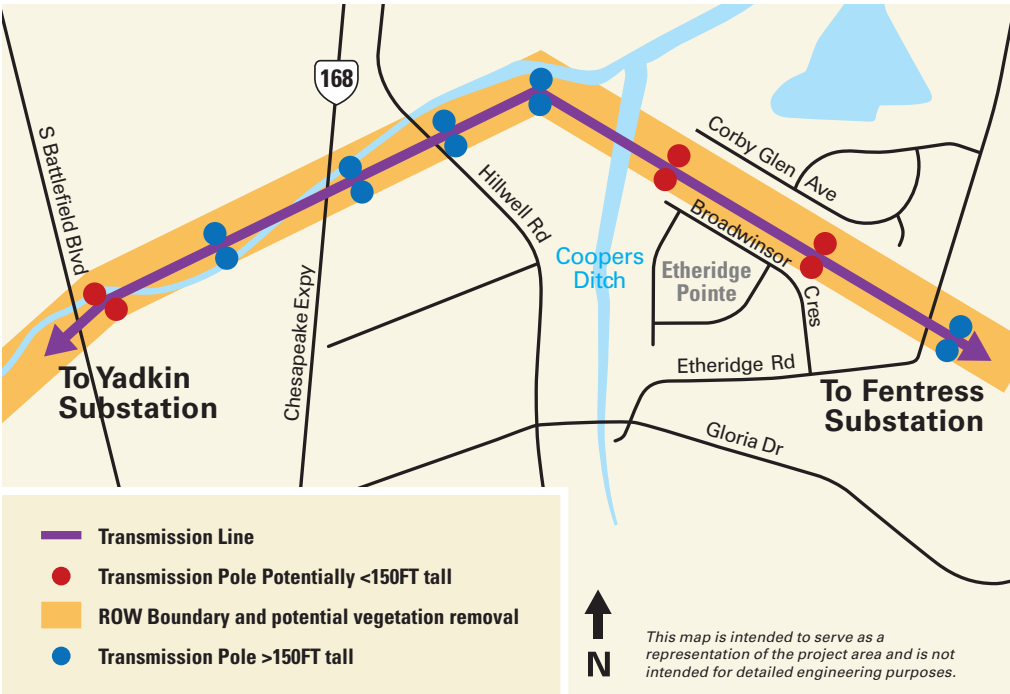
SCAN HERE
TO LEARN
MORE

To comply with safety regulations, any vegetation that poses a risk to the new power lines will be removed. A forester will contact you if vegetation needs to be removed from your property.

All encroachments within the existing 235-foot-wide right of way must be remediated or authorized by Dominion Energy Right of Way. If you receive a letter about an encroachment, please connect with your Right of Way Representative listed.

We are hosting a community meeting for neighbors in the Constraint Design Segment. You are invited to learn more, speak directly with the project team, and receive property-specific information.

Work for Phase 3 of the Yadkin-Fentress project will progress. In your neighborhood, construction access will be installed between late September and mid-October 2025. Foundations will be installed between November 2025 and March 2026. Poles will be placed in spring 2026. Work is on pace to finish in summer 2026 in your neighborhood. Thank you for your patience.



Protecting the grid against natural and man-made acts is a top priority. You can learn more about our commitment to safety at powerlines101.dominionenergy.com.



EXISTING CONDITIONS



NEW CONDITIONS

Photo simulations are for discussion purposes only. Final design is subject to change pending public, engineering, and regulatory review.

MEETING DETAILS

Wednesday, September 17, 2025

Open House
5:30 p.m. – 7:30 p.m.

Presentation
6:00 p.m. – 6:20 p.m.

Dominion Energy Office
801 S. Battlefield Blvd.
Chesapeake, Virginia 23322-4261



Save
the date



Ask
questions



In person
meeting

CONTACT US

Website: DominionEnergy.com/Yadkin-Fentress
Email: powerline@dominionenergy.com
Phone: 888-291-0190

Yadkin-Fentress 500 kV Electric Transmission Project City of Chesapeake, Virginia

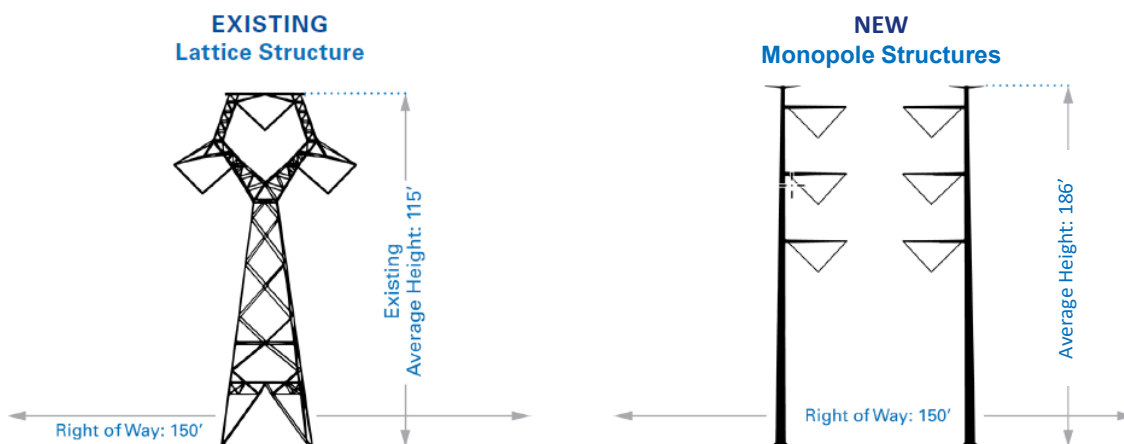


This project will rebuild an existing line (#588) and will build a new line (#5005.) This work will maintain system reliability and successfully integrate new electric generation with the current transmission system.



Project Fast Facts:

- 13.5 miles between Yadkin and Fentress substations.
- Plan to use existing, maintained right of way.*
**Except portion of Constraint Design Segment (235 feet wide existing right of way)*
- The existing lattice tower structures with one 500 kV line will be replaced by 2 dull galvanized monopole structures with two 500 kV lines.
- New monopoles will be an average of 186 feet tall, which is 71 feet taller than the existing structures.
- Where possible, new poles will be placed in similar locations as the existing structures.



Want to know more? Go to GeoVoice!

- GeoVoice is your key to discovering more about the new structures along the route.
- Search for a specific address to see proximity to structures.
- Leave a message for the project team.
- A project team member may follow up for any additional details or discussion. **What matters to you, matters to us.**
- Scan the QR code or find GeoVoice on the project website.



website: [DominionEnergy.com/Yadkin-Fentress](https://www.dominionenergy.com/Yadkin-Fentress)

email: powerline@dominionenergy.com **phone:** 888-291-0190

¿Habla español? Escanee este código QR o visite [DominionEnergy.com/Yadkin-Fentress](https://www.dominionenergy.com/Yadkin-Fentress) para solicitar estos documentos en español.

Yadkin-Fentress 500 kV Electric Transmission Project City of Chesapeake, Virginia



This project will rebuild an existing line (#588) and will build a new line (#5005.) This work will maintain system reliability and successfully integrate new electric generation with the current transmission system.



Project Timeline:

- Phase 1 will be completed in 2025, except for a few structures at I-64/Yadkin Substation in 2026.
- Phases 2 and 3 will begin in spring and summer 2025, starting from Yadkin Substation and working towards Fentress Substation.
- Line #588 will be rebuilt by June 2026. Crews will then double-back to finish building Line #5005 in Phases 2 and 3 by December 2026.

Schedule is subject to change pending final approvals, permits, weather, and progress.

Line
#588

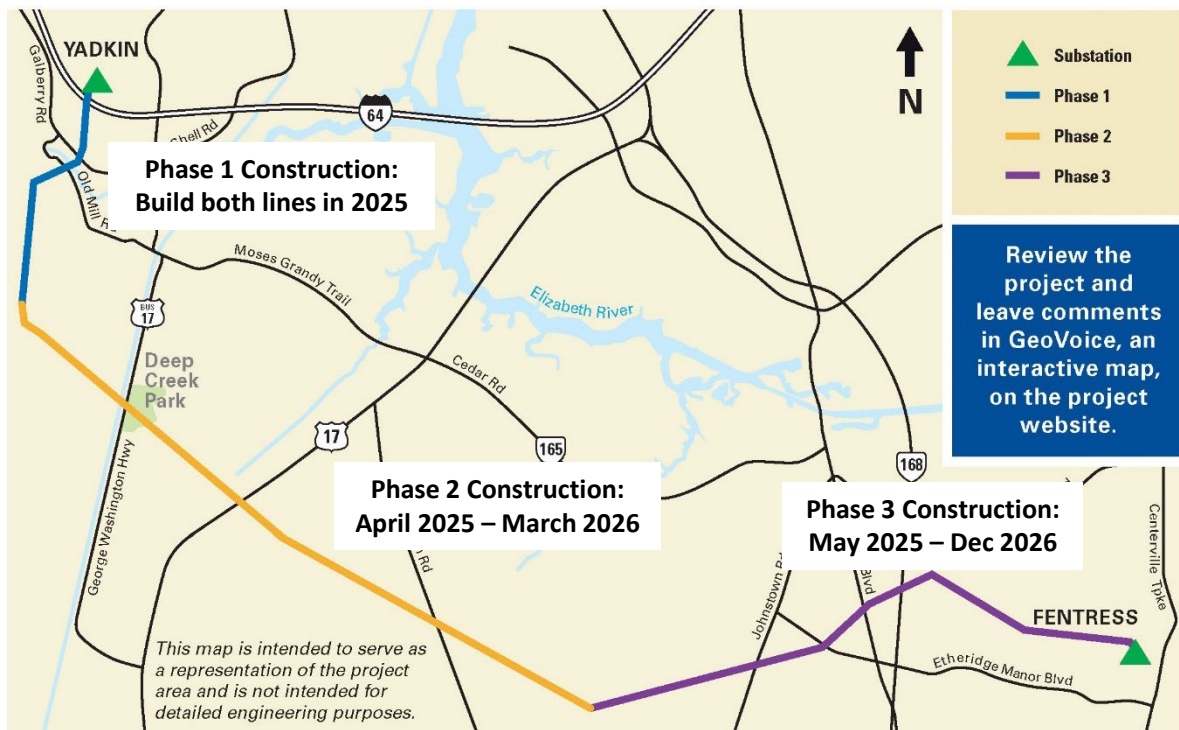
March - July 2025:
Yadkin -Weiss Lane

April 2025 - June 2026:
Appaloosa Tr - Fentress

Line
#5005

March - Sept 2025:
Yadkin -Weiss Lane

April 2025 - Dec 2026:
Appaloosa Tr - Fentress



website: [DominionEnergy.com/Yadkin-Fentress](https://www.dominionenergy.com/Yadkin-Fentress)

email: powerline@dominionenergy.com **phone:** 888-291-0190

Yadkin-Fentress 500 kV Electric Transmission Project City of Chesapeake, Virginia



This project will rebuild an existing line (#588) and will build a new line (#5005.) This work will maintain system reliability and successfully integrate new electric generation with the current transmission system. Constraint Design Segment construction begins in fall 2025 and ends in late 2026.



Constraint Design Segment Fast Facts:

- 1.6-miles long section between Battlefield Boulevard South and Etheridge Road
- Original 1973 easement:
 - Affects ~40 present-day parcels in the Lakes of Etheridge, Etheridge Pointe and Glasser Landing neighborhoods
 - Has a height restriction: transmission poles cannot exceed 150 feet tall
 - Existing right of way here is 235 feet wide. Historically, we have maintained vegetation in only 150 feet of this right of way for the existing transmission line.
- *All encroachments within the 235-foot-wide right of way must be remediated or authorized by Dominion Energy Right of Way.*

Constraint Design Segment Outcome:

S Battlefield Blvd – 588/245 Preferred Design	588/245 – Etheridge Rd Constraint Design
Taller structures with a smaller footprint	Shorter structures with a wider footprint
New structure heights: 177 to 192 feet	New structure heights: 150 feet (maximum)
Uses existing, maintained 150-foot-wide right of way	Uses full 235-foot-wide right of way
Vegetation removal: <ul style="list-style-type: none"> • Mostly within the existing, maintained 150-foot-wide right of way • Preserves more vegetation along Poplar Branch Ditch 	Vegetation removal: <ul style="list-style-type: none"> • More removal is required from full 235-foot-wide right of way, including at Coopers Ditch • Some tall trees outside the right of way may need to be removed from front yards on Corby Glen Avenue and Oakford Crescent due to proximity to new wires
We will build the Preferred Solution within the existing, maintained 150-foot-wide right of way.	We will build the Constraint Design Solution within the existing 235-foot-wide right of way.

The Virginia State Corporation Commission authorized Dominion Energy to build either solution in its Final Order for this project.

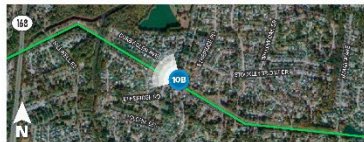
website: [DominionEnergy.com/Yadkin-Fentress](https://www.dominionenergy.com/Yadkin-Fentress)
email: powerline@dominionenergy.com **phone:** 888-291-0190



**YADKIN TO
FENTRESS**
Transmission Line Project

Viewpoint 10B

Date: 8/30/2023 Time: 9:05 am Viewing Direction: Northwest
Viewpoint Location Transmission Line



EXISTING CONDITIONS



PROPOSED CONDITIONS

Constraint Design

Photo simulations are for discussion purposes only. Final design is subject to change pending public, engineering, and regulatory review.

LEGEND

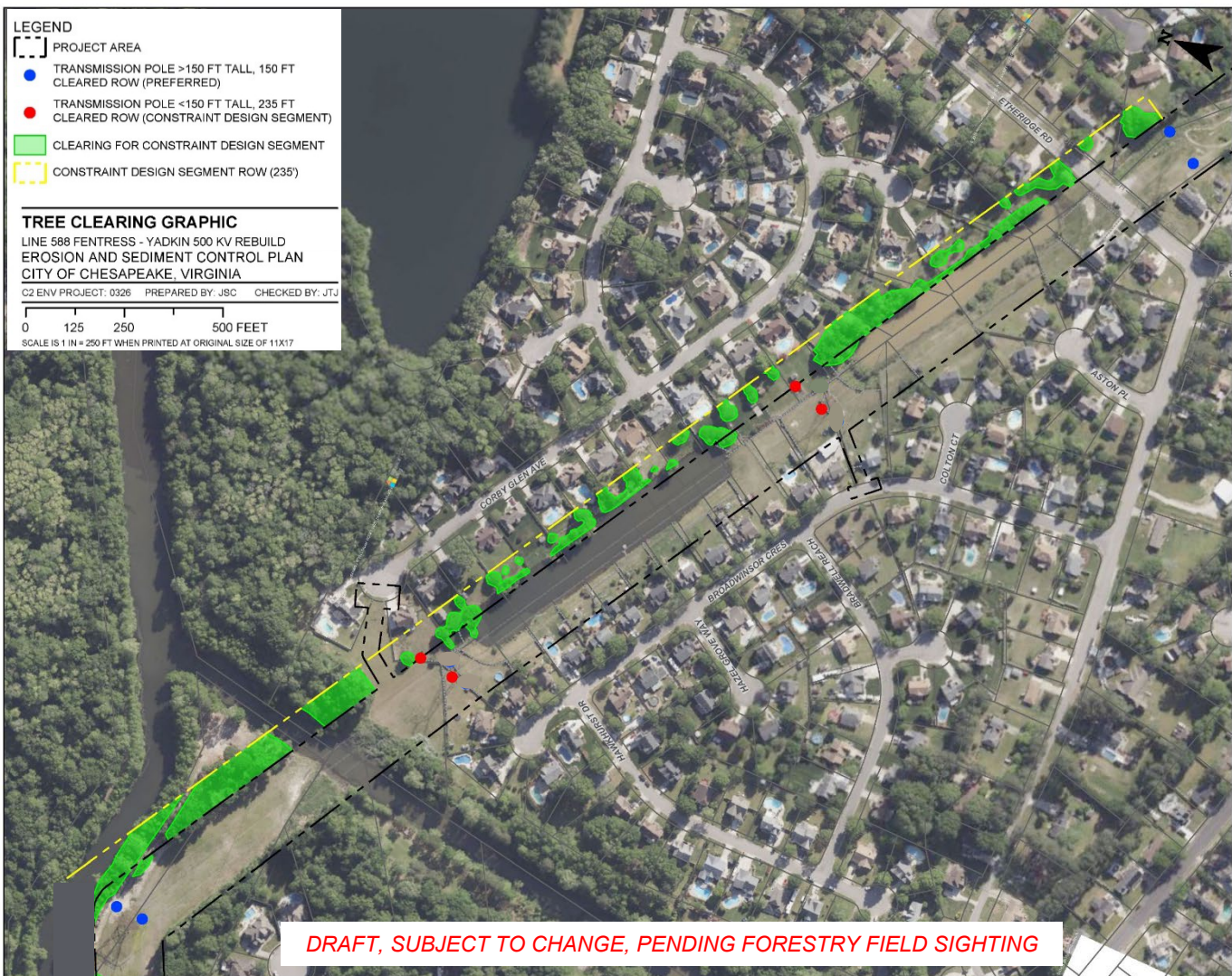
- PROJECT AREA
- TRANSMISSION POLE >150 FT TALL, 150 FT CLEARED ROW (PREFERRED)
- TRANSMISSION POLE <150 FT TALL, 235 FT CLEARED ROW (CONSTRAINT DESIGN SEGMENT)
- CLEARING FOR CONSTRAINT DESIGN SEGMENT
- CONSTRAINT DESIGN SEGMENT ROW (235')

TREE CLEARING GRAPHIC

LINE 588 FENTRESS - YADKIN 500 KV REBUILD
EROSION AND SEDIMENT CONTROL PLAN
CITY OF CHESAPEAKE, VIRGINIA

C2 ENV PROJECT: 0326 PREPARED BY: JSC CHECKED BY: JJJ

0 125 250 500 FEET
SCALE IS 1 IN = 250 FT WHEN PRINTED AT ORIGINAL SIZE OF 11X17



DRAFT, SUBJECT TO CHANGE, PENDING FORESTRY FIELD SIGHTING

Yadkin – Fentress 500 kV Electric Transmission Line Project in the City of Chesapeake, Virginia Constraint Design Segment Update Wednesday, September 17, 2025



**Dominion
Energy®**

Project Team



Carrie
Communications



Melissa
Right of Way



Lonnie
Transmission Lines

**Steve
Ben**
Real Estate



Clif
Access



Jen
Forestry



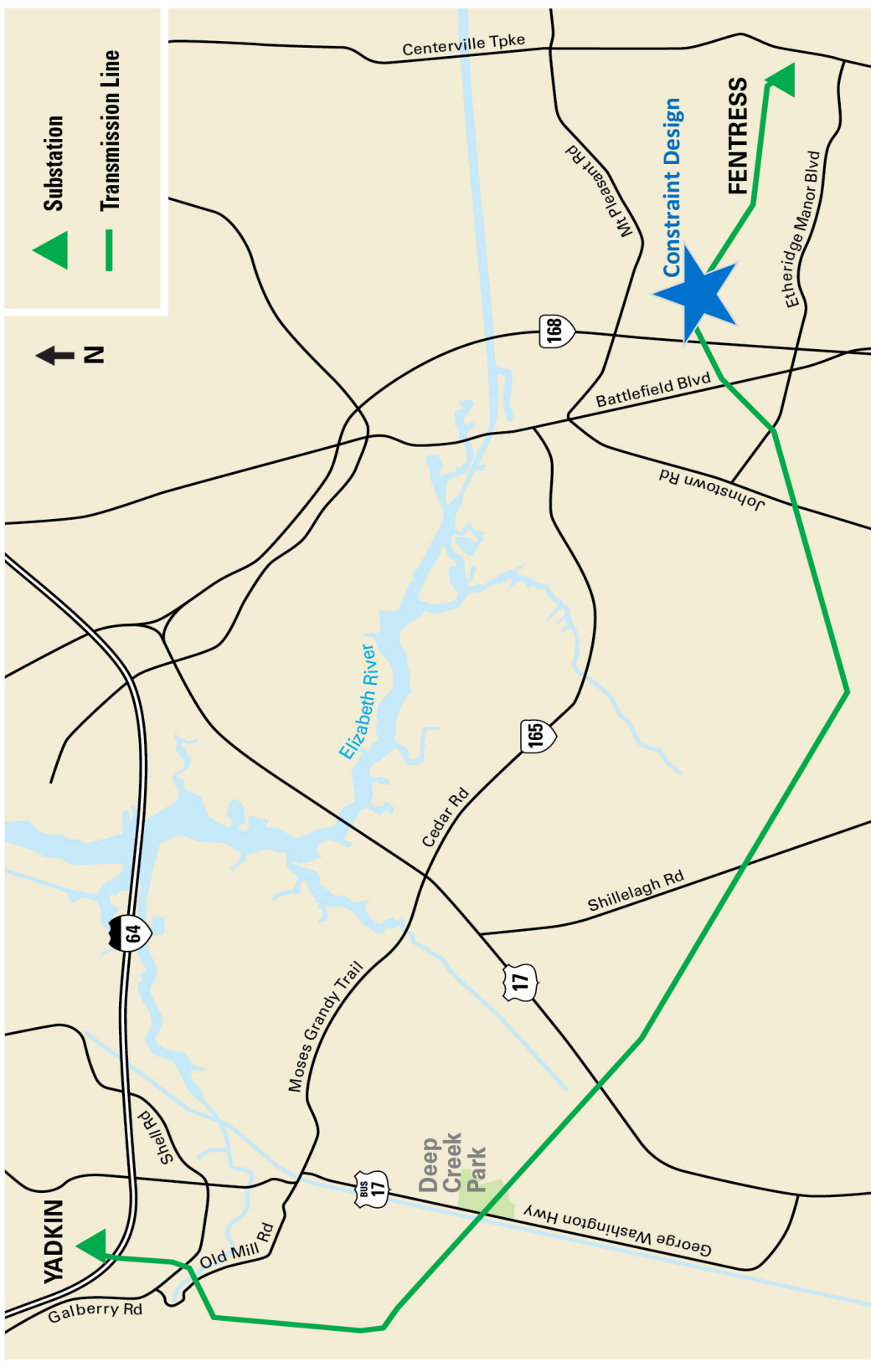
Heather
Environmental
Permitting

Project Overview

- **NEED:** To maintain structural integrity and reliability of the transmission system, and to integrate new electric generation with the transmission system
- **TO DO:** Replace the existing overhead single circuit 500 kV electric transmission line with two new overhead single circuit 500 kV transmission lines between our Yadkin and Fentress substations

• QUICK FACTS:

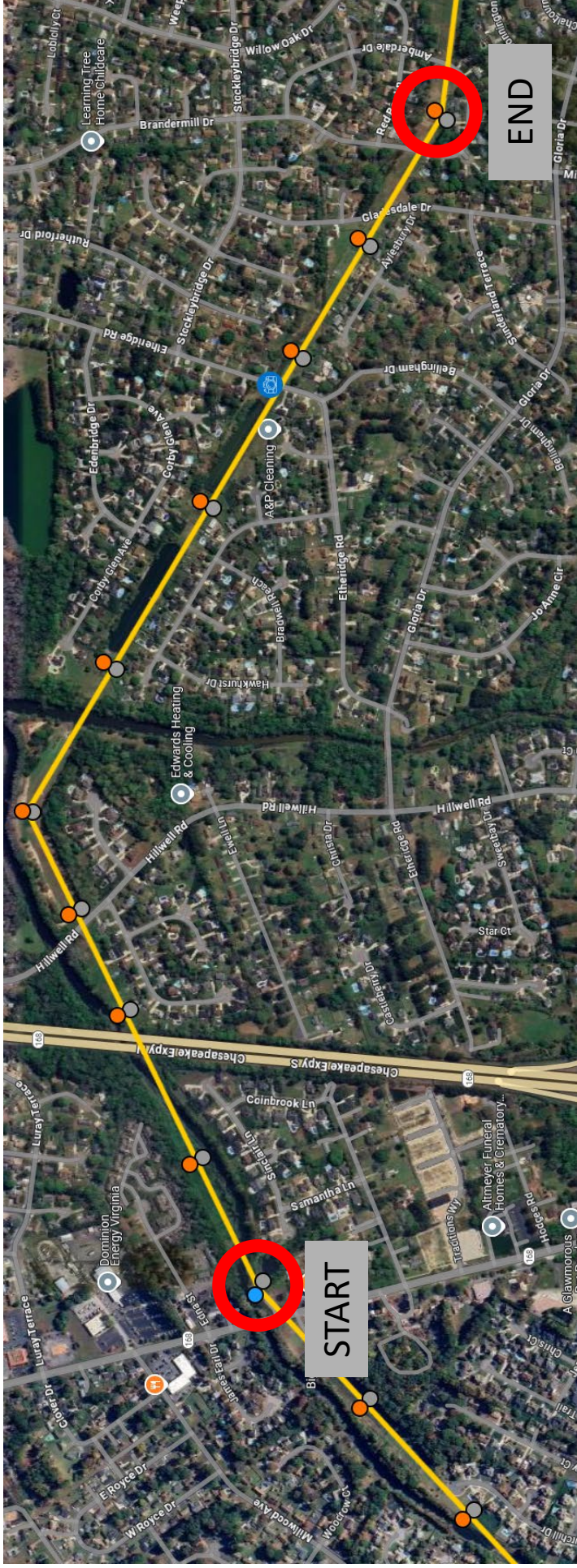
- ~13.5 miles long
- Use existing, maintained 150-foot-wide right of way*
- Rebuild Line #588 – end of life (built in 1975)
- New Build Line #5005 – new generation interconnection



Constraint Design Segment

Fast Facts

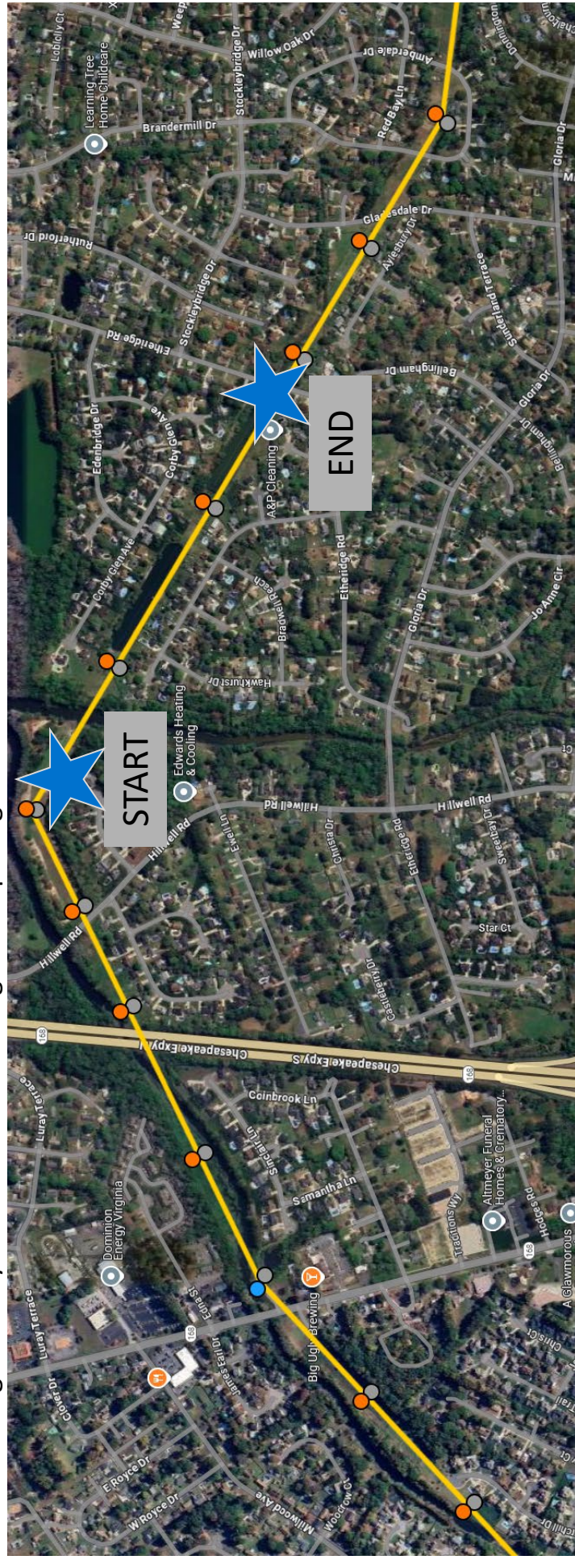
- Affects ~40 present-day parcels in the Lakes of Etheridge, Etheridge Pointe and Glasser Landing neighborhoods
- Has a height restriction: transmission poles can't exceed 150 FT
- Existing 235-foot-wide right of way; previously maintained 150-foot-wide portion under original line



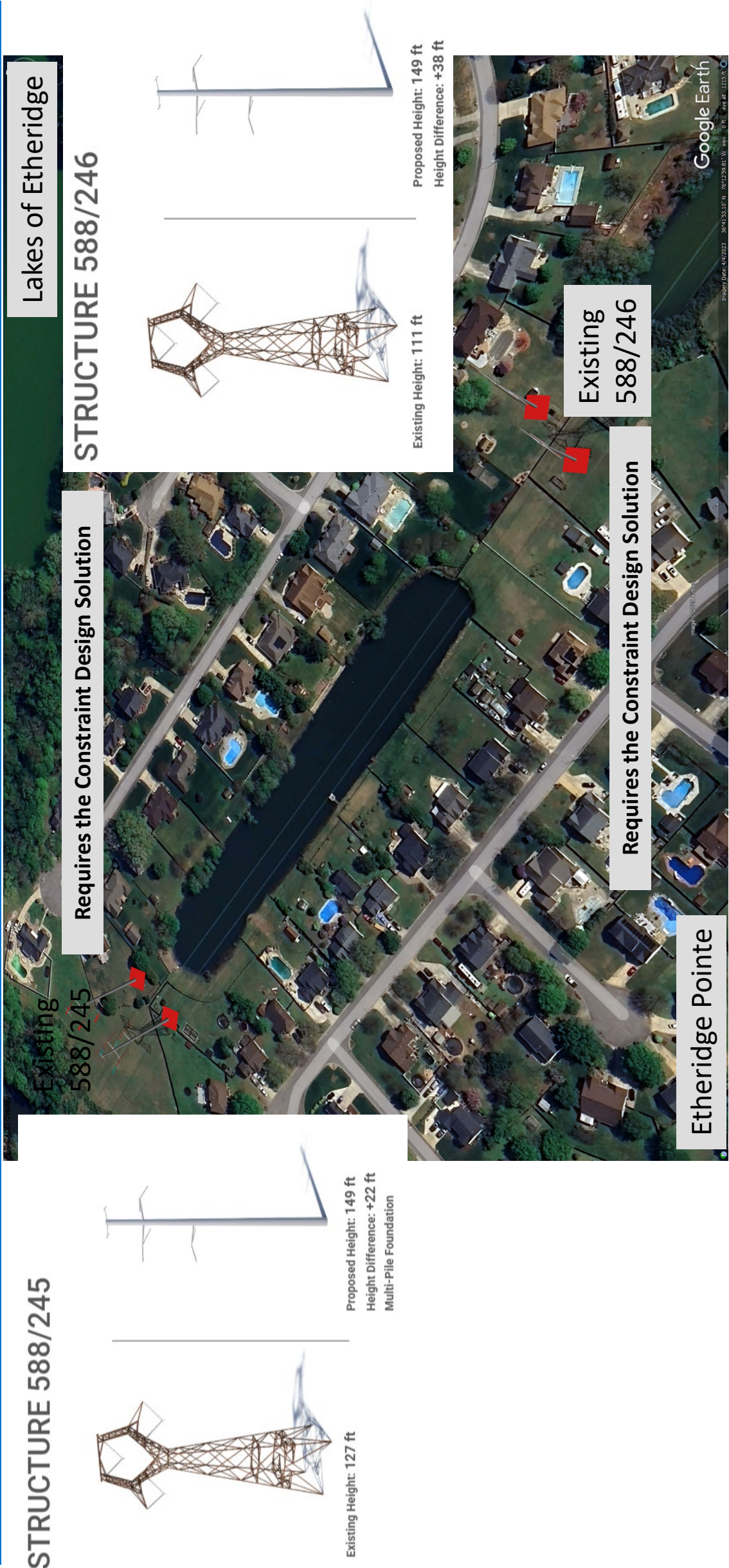
Constraint Design Segment

Final Outcome

- This minimizes environmental impacts and vegetation removal required along Poplar Branch Ditch
- Transmission poles and wires can't exceed 150 FT
- Wires transitioning out of these structure locations comply
- Some vegetation removal required along Coopers Ditch to Etheridge Road
- Full 235-foot-wide right of way must be cleared of vegetation posing a risk to the transmission lines



Affected Area in Lakes of Etheridge and Etheridge Pointe



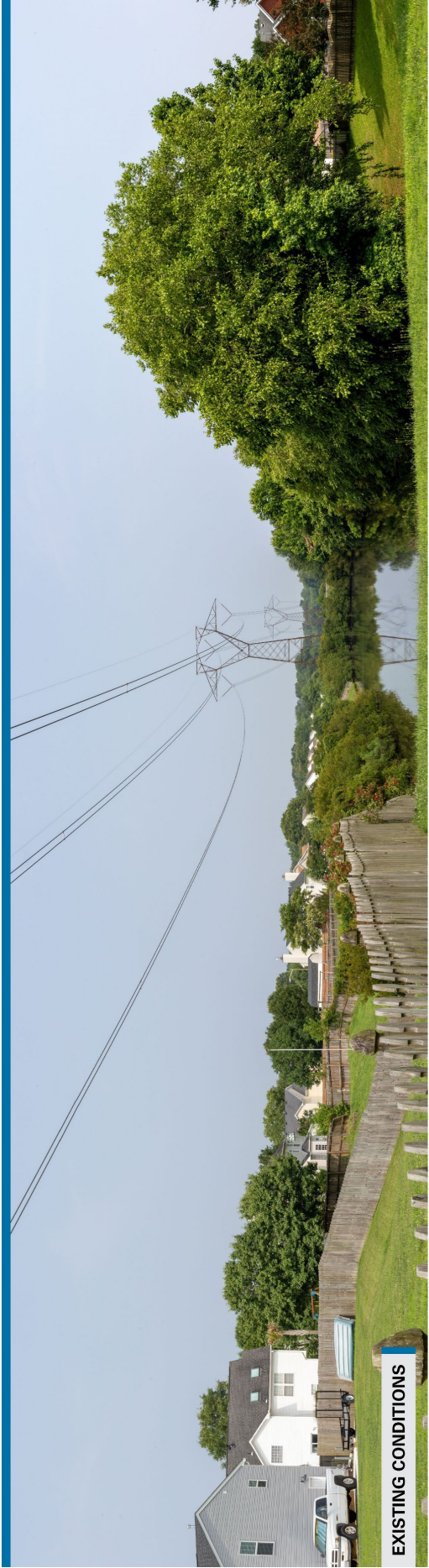
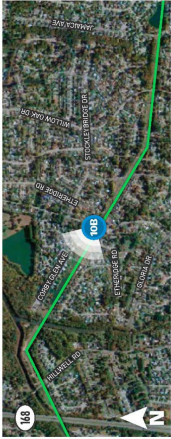
Comparing Existing and Constraint Design

Photosimulation at Etheridge Road Looking Northwest – O&M will maintain/remove vegetation over time

**YADKIN TO
FENTRESS**
Transmission Line Project

Viewpoint 10B

Date: 6/30/2023 Time: 9:05 am Viewing Direction: Northwest
Viewpoint Location Transmission Line



Constraint Design

Photo simulations are for discussion purposes only. Final design is subject to change pending public, engineering, and regulatory review.

Vegetation Removal

Constraint Design – O&M will maintain/remove vegetation over time



LEGEND

PROJECT AREA

TRANSMISSION POLE >150 FT TALL, 150 FT CLEARED ROW (PREFERRED)

TRANSMISSION POLE <150 FT TALL, 235 FT CLEARED ROW (CONSTRAINT DESIGN SEGMENT)

CLEARING FOR CONSTRAINT DESIGN SEGMENT

CONSTRAINT DESIGN SEGMENT ROW (235')

SAFE TREE

SWING RADIUS/SAFE ZONE OF TRANSMISSION WIRE

10'

10'

TREE FALL LINE FOR DANGER TREE CLEARING

DANGER TREE

RIGHT OF WAY

DANGER TREES are trees that are in the swing radius of a transmission wire and have the potential to come within 10 feet of the transmission wires or structures if they were to fall.

DANGER TREES are trees that are in the swing radius of a transmission wire and have the potential to come within 10 feet of the transmission wires or structures if they were to fall.

Danger Tree Cutting Guidelines

Monopole Structure

LANDOWNERS: CONTACT DOMINION ENERGY before planning any tree cutting work. Call 800-251-5022 or email etow@dominionenergy.com. For more information, visit DominionEnergy.com/rightofway.

Dominion Energy®

TREE CLEARING GRAPHIC

LINE 588 FENTRESS - YADKIN 500 KV REBUILD PHASE 2

EROSION AND SEDIMENT CONTROL PLAN

CITY OF CHESAPEAKE, VIRGINIA

C2 ENV PROJECT 0026 PREPARED BY: JSC CHECKED BY: JTJ

Report on Constraint Design Segment

Case No.

500 FEET

250

125

0

SCALE IS 1" = 250 FT WHEN PRINTED AT ORIGINAL SIZE OF 11X17

SHEET 2 OF 2

Dominion Energy®

PUR-2024-00105

Attachment 10

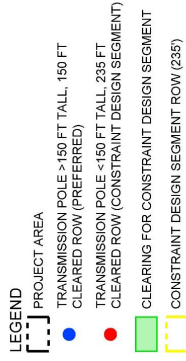
Page 8 of 23

8

What's Next?

Construction Arrives

- **October 2025:** Install temporary construction access materials
- **December 2025 – February 2026:** Install multipile foundation at 588/245
- **December 2025 – March 2026:** Install vibratory caisson foundations
- **Early 2026:** Forestry crews remove any vegetation posing a risk to the new lines
- **March 2026:** Remove existing wires
- **March – April 2026:** Install new structures and remove original towers
- **May 2026:** Install new wires on 588 line
- **July 2026:** Install new wires on 5005 line



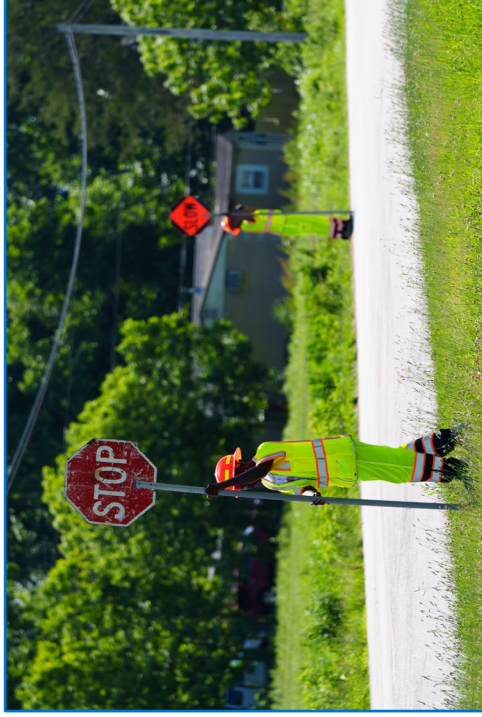
TREE CLEARING GRAPHIC

LINE 588 FENTRESS - YADKIN 500 KV REBUILD PHASE 2
EROSION AND SEDIMENT CONTROL PLAN
CITY OF CHESAPEAKE, VIRGINIA
C2 ENV PROJECT: 0326 PREPARED BY: JSC CHECKED BY: JTT
Report on Constraint Design Segment
Case No. PUR-2024-00105
Attachment 10
Page 9 of 23
0 125 250 500 FEET
SCALE IS 1"=250 FT WHEN PRINTED AT ORIGINAL SIZE OF 11X17
SHEET 2 OF 2

Safety Topic

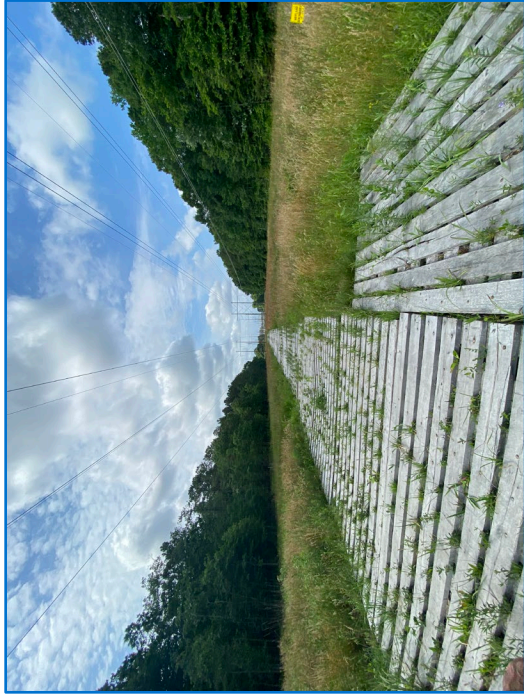
Work Zones

- Please do not enter work zones, which may be marked by cones, fencing, or other temporary barriers
 - Please keep an eye on kids and pets, especially when the work zone is in your yard
 - Follow any crew instructions or posted signage
-
- There will be construction vehicles moving in and out of our construction entrances
 - In residential neighborhoods, please stay aware of traffic and move personal vehicles when necessary
 - Please follow flagger instructions during temporary traffic pauses



Construction Access

- Where possible, we will access the right of way using existing roads.
- Construction entrances and/or additional access roads may be temporarily installed.
- Fences may need to be temporarily removed for access.
- Timber supports beneath the mats help to minimize disturbance to the ground or surface below.
- Matted support systems provide access through wetlands, swamps, and other sensitive areas.



Construction Activities

- Installing access roads
- Preparing the site
- Handling and staging materials
- Installing foundations
- Erecting structures
- Stringing wires (conductor + fiber)
- Removing the original structures along the rebuilt line segment
- Restoring the right of way



Foundation Types on Yadkin – Fentress

All require a crane and hammer:

- **Vibratory Caisson** (hollow cylinder, no excavation) – *most common type on this project*
- **Pipe Pile** (excavate, set anchor bolt cage and pour concrete) – *least common type on this project*
- **Multipile/H-pile** (drive h-piles in ground, excavate and install rebar, and pour concrete) – *at 26 locations*

Vibratory Caisson



Pipe Pile



Multipile



Vibratory Caisson

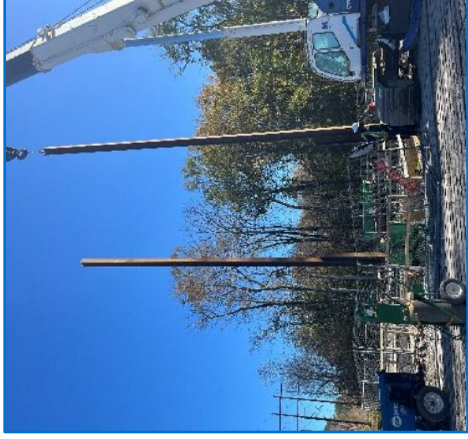
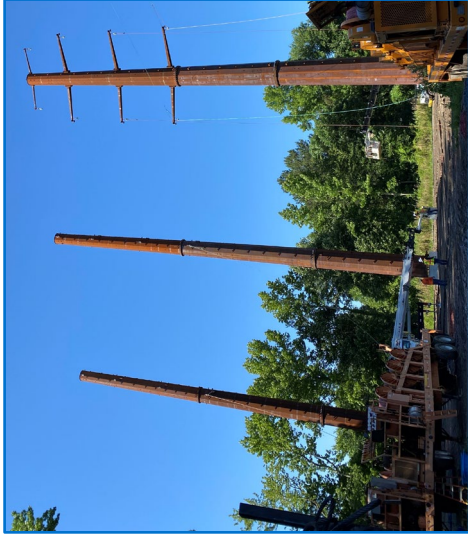
- 8' – 9' wide, 50' – 65' deep
- Vibratory hammer on a crane installs the caisson, pausing three times to measure and align
 - If no tough soil layers to get through, caisson can be fully installed within minutes
- Once installed, sand mixture may be poured inside the cylinder to mitigate standing water and mosquitos/bugs
 - No excavation, no concrete
- Crane assembles the pole – base is secured to the caisson with anchor bolts
- Start to finish: as little as a day



Multipile Foundation

Necessary for higher load locations

- Large construction footprint
 - Buried when finished
- Install steel h-piles to depth
 - Several weeks with noise and vibration
- Excavate the square pit
- Install rebar and pour concrete
- Concrete cure time between pours
- Attach pole base to anchor bolt cage (above ground)
- Takes 45-60 days to build



What to expect during foundation installation

- **You may...**
 - Feel vibrations
 - Sense high or low frequency hums
 - Hear metal rattling or pounding from the worksite
 - See tall pieces of equipment at work
 - Hear concrete trucks beeping and frequently making deliveries
 - Delicate and elevated items in house may rattle
 - Windows and doors may shake
- **If you live near a multiple/h-pile foundation:**
 - There will be several weeks of hammer work to install steel beams into the ground
 - There will be *many* concrete delivery trucks
- **If you live near a vibratory caisson foundation:**
 - Although this is usually a *faster* installation method, it can be intense for the closest neighbors



Noise and vibrations
will be monitored in
real time.

What to expect during pole and line installation



Cranes help assemble the pole pieces.



Helicopter helps install lines.

Interactive Project Map (GeoVoice)

Structure locations, types, and heights

Step 1:

Go to DominionEnergy.com/Yadkin-Fentress

Step 2:

Click on this link



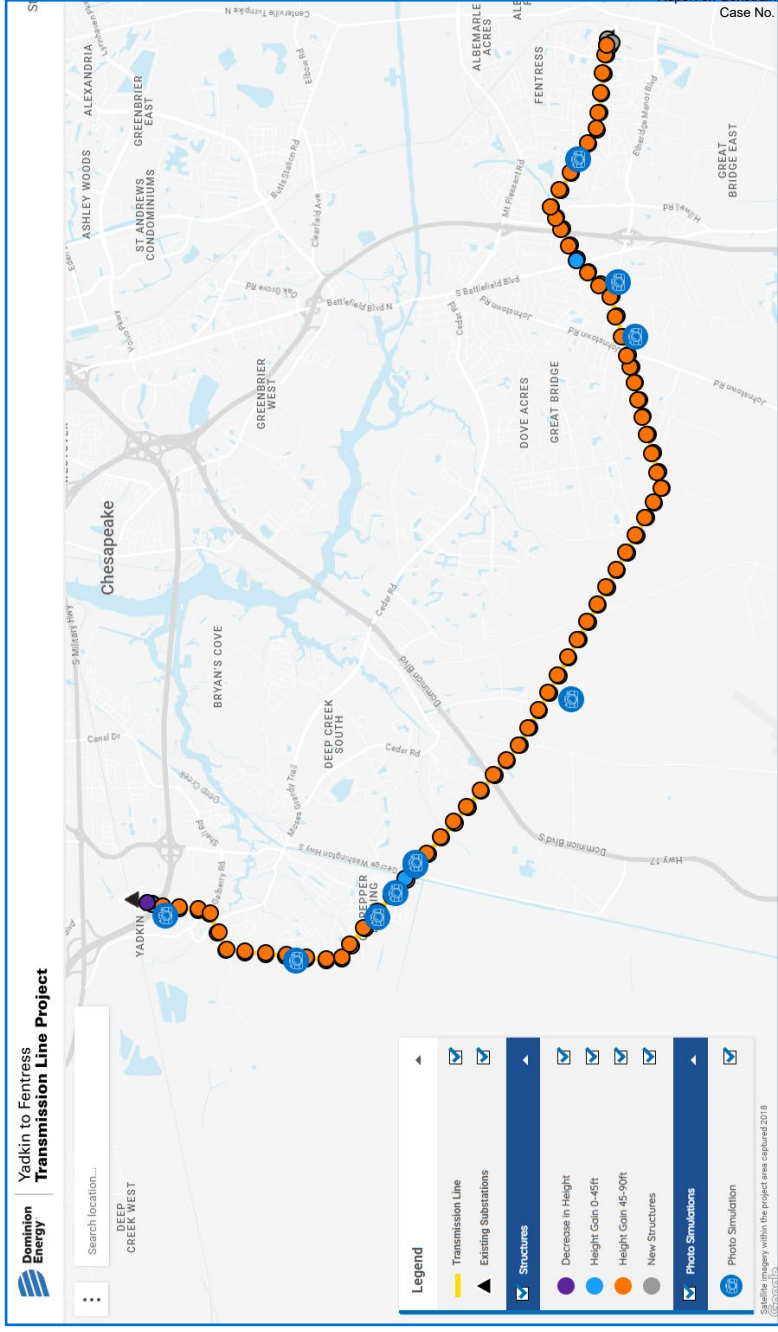
GeoVoice: Structure Comparison Tool

[Explore The Yadkin-Fentress Interactive Structure Comparison Tool, GeoVoice](#)

- Use the address search to see structure locations in your area.
- View details about individual structures by clicking on structure location marker.
- View simulations of existing and proposed structures.

Step 3:

- Click on structure icons to view specific info.
- Click on photo icons to see simulations.
- Search by address to see what's nearby.
- Explore the construction phases timeline.



Click [HERE](#) for the GeoVoice link.

**Questions?
Let's Discuss!**

Thank you for your time!

Connect with us if you have questions or feedback:
888-291-0190
powerline@dominionenergy.com

Resource Slides

Construction Schedule

*Pending final permits, weather and progress

Phase 1: Yadkin Substation – Weiss Lane

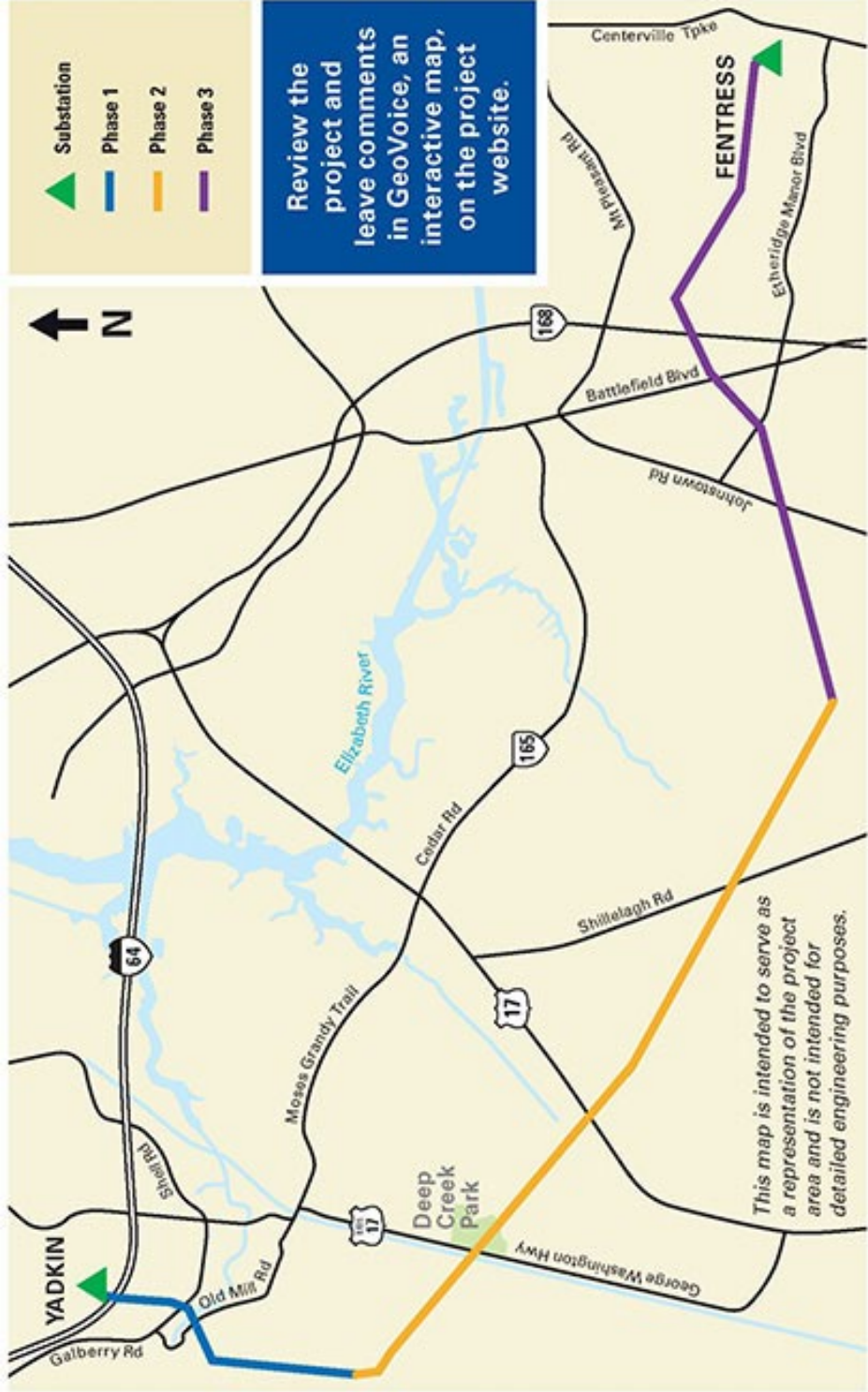
- March 2025: Construction begins
- July 2025: Finish rebuilding Line 588
- September 2025: Finish building Line 5005

Phase 2: Appaloosa Trail – Holmes Trail

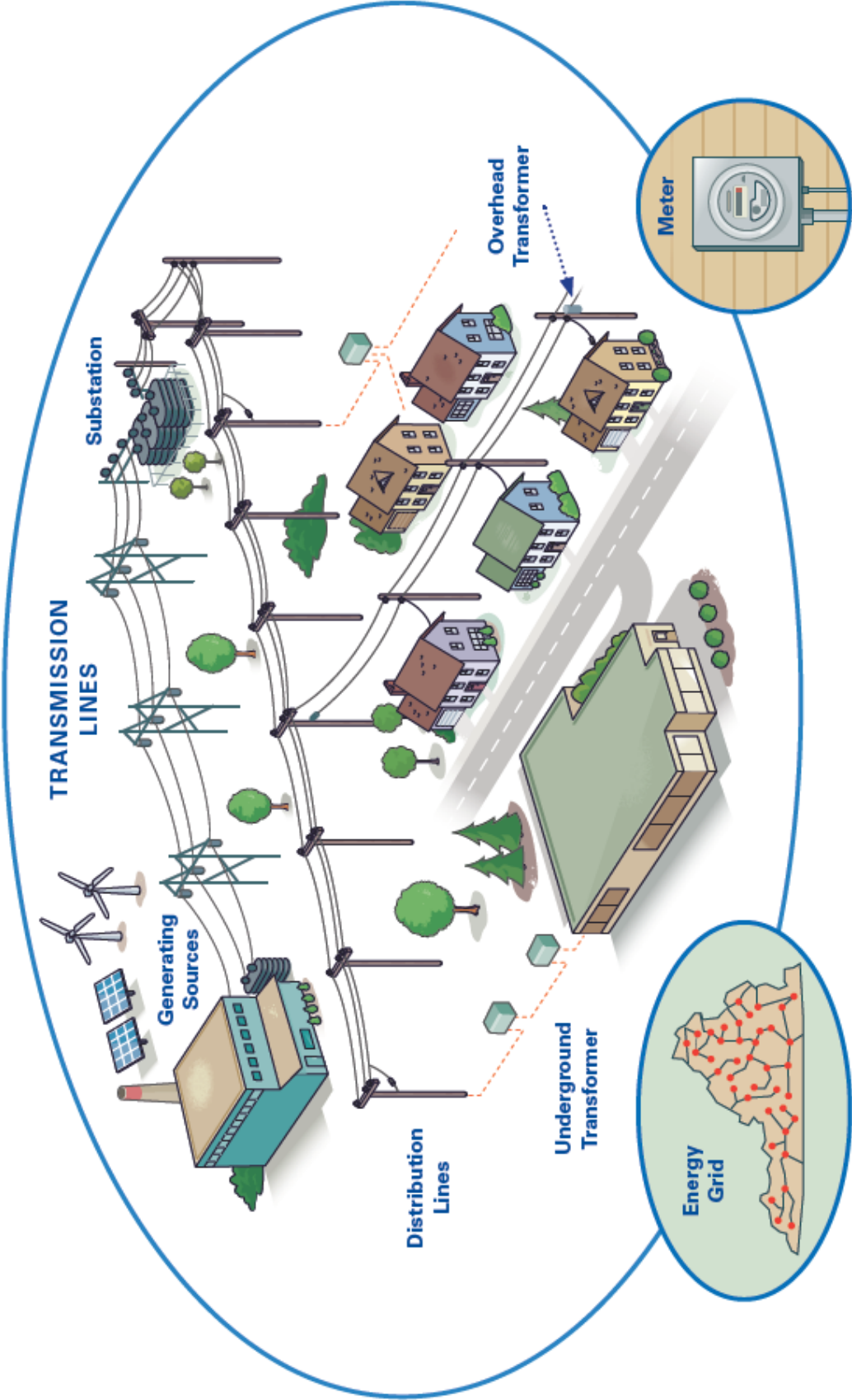
- April 2025: Construction begins
- March 2026: Finish rebuilding Line 588 and finish building Line 5005

Phase 3: Holmes Trail – Fentress Substation

- May 2025: Construction begins
- June 2026: Finish rebuilding Line 588
- December 2026: Finish building Line 5005



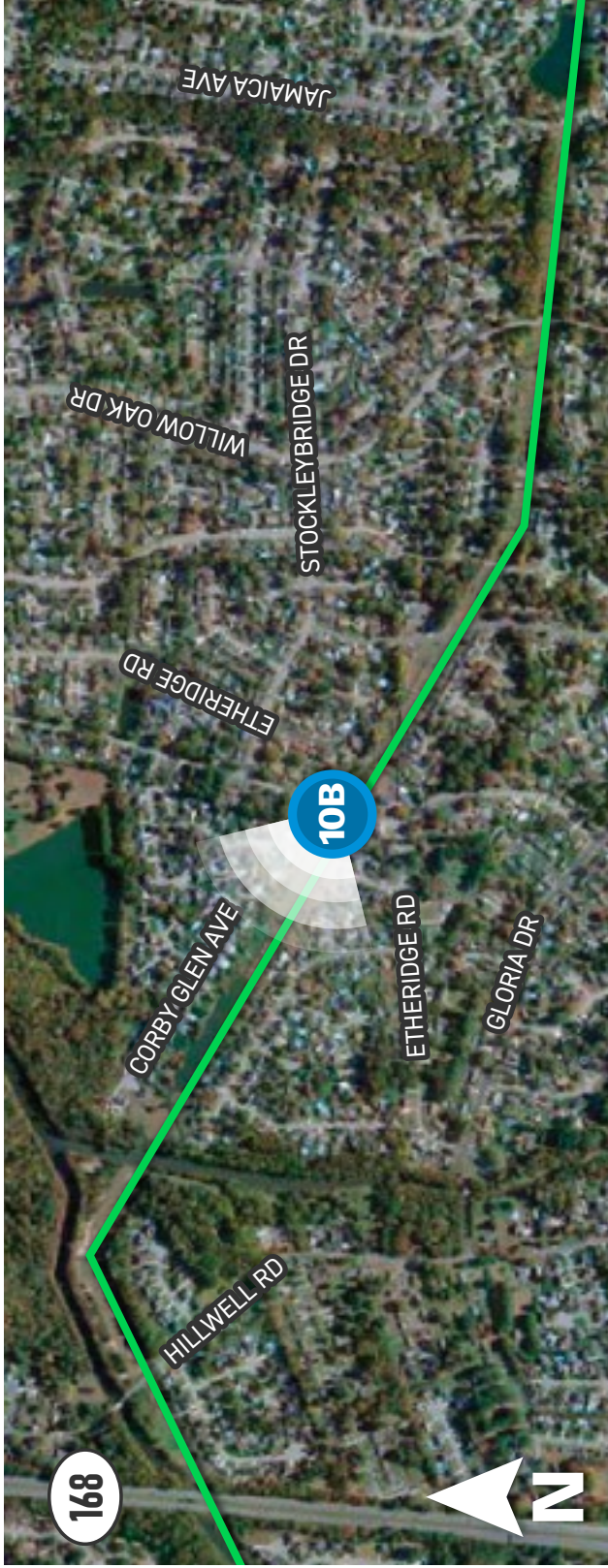
Electric Grid Overview



YADKIN TO FENTRESS

Transmission Line Project

Viewpoint 10B
Date: 6/30/2023 **Time:** 9:05 am **Viewing Direction:** Northwest
10B Viewpoint Location — Transmission Line



EXISTING CONDITIONS



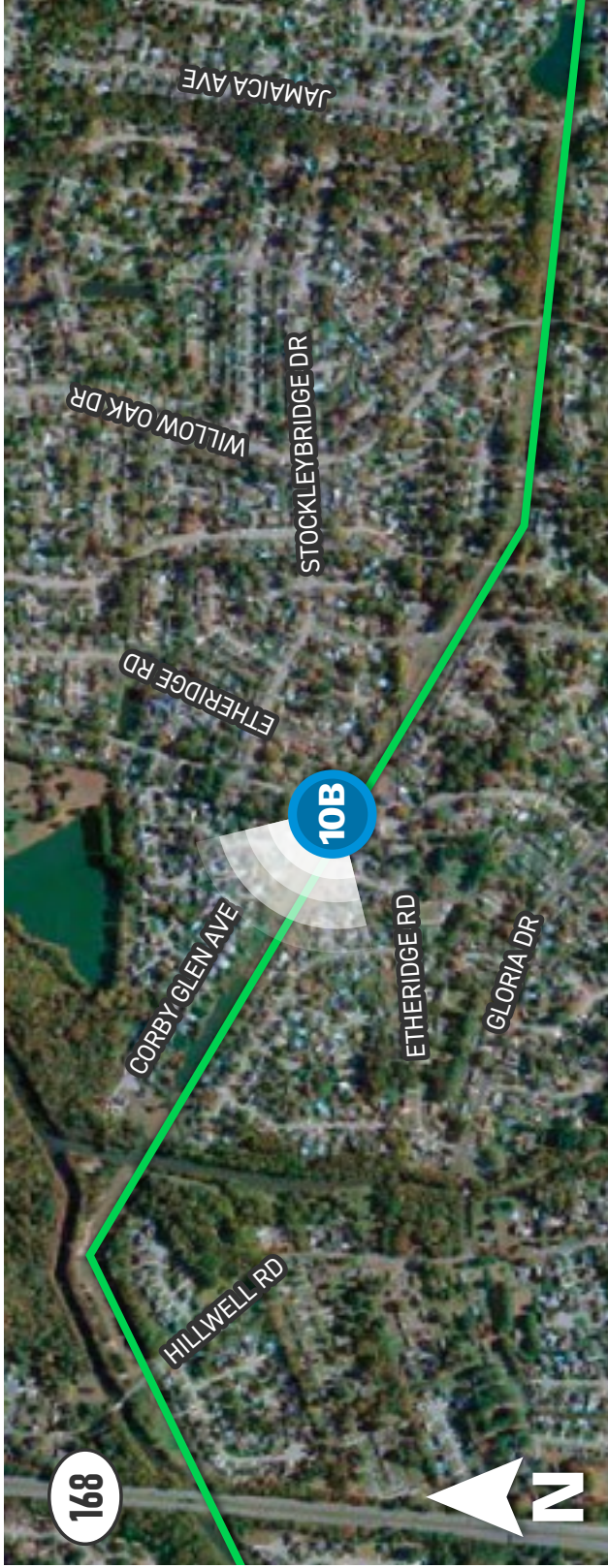
PROPOSED CONDITIONS

Constraint Design

YADKIN TO FENTRESS

Transmission Line Project

Viewpoint 10B
Date: 6/30/2023 **Time:** 9:05 am **Viewing Direction:** Northwest
10B Viewpoint Location — Transmission Line



EXISTING CONDITIONS



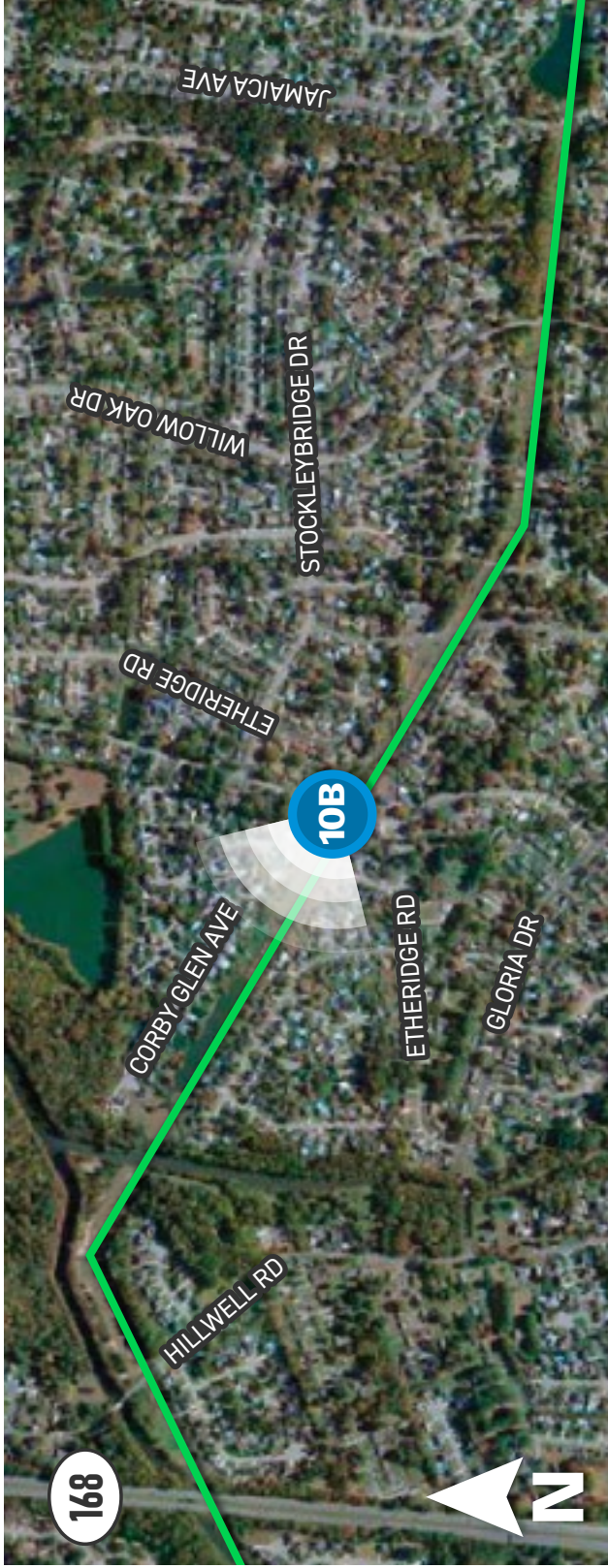
PROPOSED CONDITIONS

Original Height Design

YADKIN TO FENTRESS

Transmission Line Project

Viewpoint 10B
Date: 6/30/2023 **Time:** 9:05 am **Viewing Direction:** Northwest
10B Viewpoint Location — Transmission Line



Original Height Design

PROPOSED CONDITIONS



Constraint Design

PROPOSED CONDITIONS

LEGEND

PROJECT AREA

TRANSMISSION POLE >150 FT TALL, 150 FT
CLEARED ROW (PREFERRED)

TRANSMISSION POLE <150 FT TALL, 235 FT
CLEARED ROW (CONSTRAINT DESIGN SEGMENT)

CLEARING FOR CONSTRAINT DESIGN SEGMENT

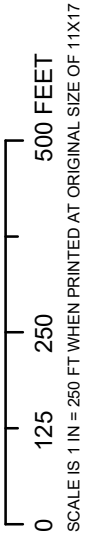
CONSTRAINT DESIGN SEGMENT ROW (235')



TREE CLEARING GRAPHIC

LINE 588 FENTRESS - YADKIN 500 KV REBUILD PHASE 2
EROSION AND SEDIMENT CONTROL PLAN
CITY OF CHESAPEAKE, VIRGINIA

C2 ENV PROJECT: 0326 PREPARED BY: JSC CHECKED BY: JTJ



SHEET 1 OF 2

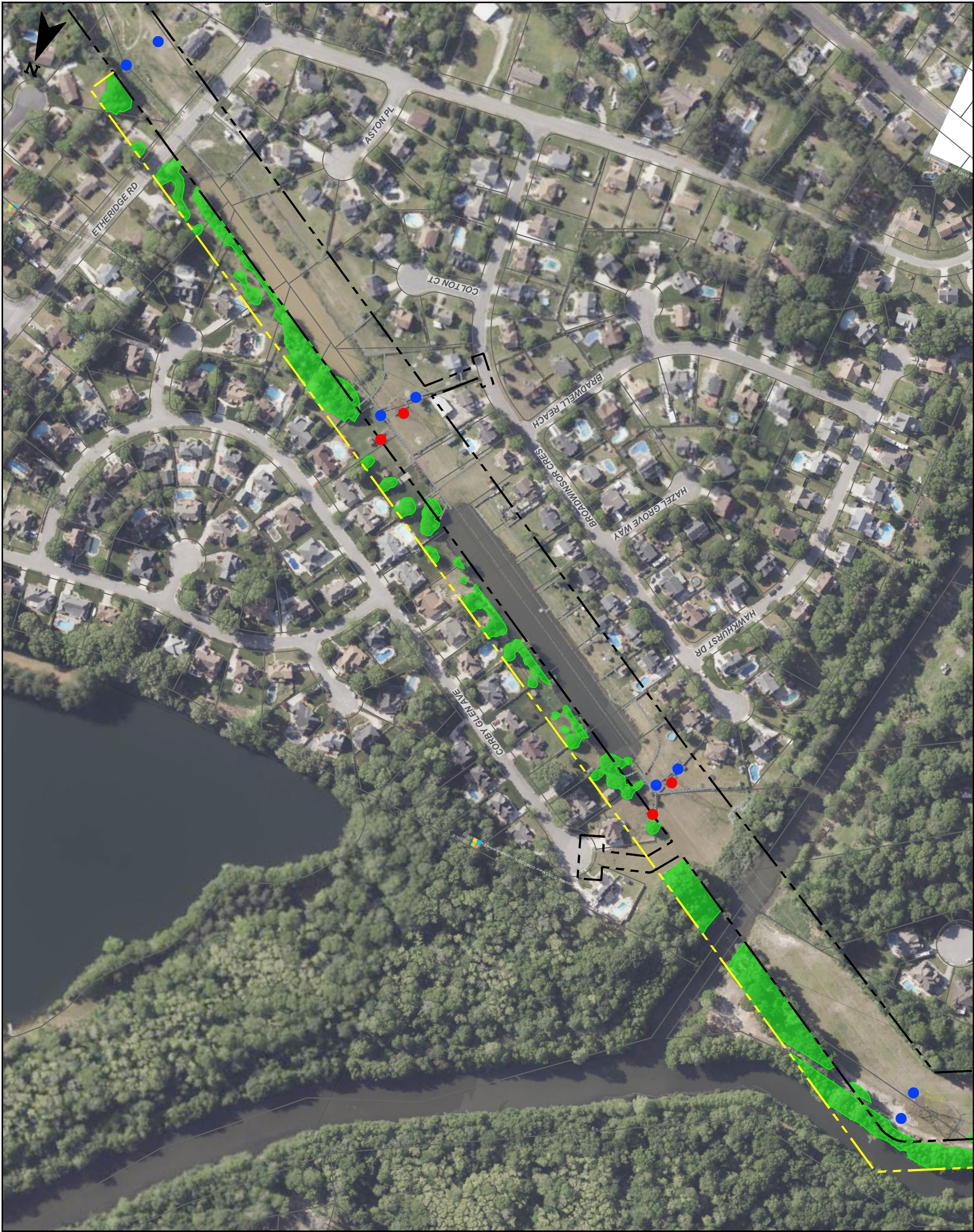
- LEGEND
- PROJECT AREA

TRANSMISSION POLE >150 FT TALL, 150 FT CLEARED ROW (PREFERRED)

TRANSMISSION POLE <150 FT TALL, 235 FT CLEARED ROW (CONSTRAINT DESIGN SEGMENT)

CLEARING FOR CONSTRAINT DESIGN SEGMENT

CONSTRAINT DESIGN SEGMENT ROW (235')



TREE CLEARING GRAPHIC

LINE 588 FENTRESS - YADKIN 500 KV REBUILD PHASE 2
EROSION AND SEDIMENT CONTROL PLAN
CITY OF CHESAPEAKE, VIRGINIA

C2 ENV PROJECT: 0326 PREPARED BY: JSC CHECKED BY: JTJ

0

125

250

500 FEET

SCALE IS 1 IN = 250 FT WHEN PRINTED AT ORIGINAL SIZE OF 11X17

SHEET 2 OF 2



Investing in Our Communities

Dominion Energy image. Not project specific.

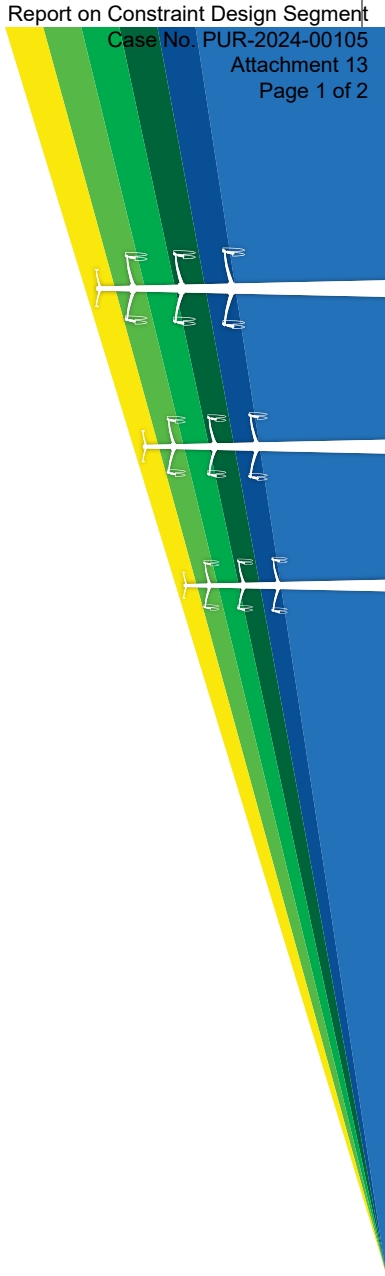


Electric Transmission
P.O. Box 26666
Richmond, VA 23261

**Learn more about upcoming forestry work
in the City of Chesapeake, Virginia.**



**SCAN HERE
TO LEARN
MORE**



We are removing vegetation in your community for your safety

Yadkin-Fentress 500 kV Electric Transmission Project

At Dominion Energy, we provide the reliable, affordable, and increasingly clean energy that powers your every day. You are receiving this postcard to update you on the Yadkin to Fentress 500 Kilovolt (kV) Project, which will maintain electric reliability and integrate new generation with the grid. To support

this project, vegetation

inside and outside the right of way corridor may need to

be removed. In the coming weeks, you may be contacted by a Dominion Energy forester

to coordinate necessary vegetation removal in your area or on your property.



**SCAN HERE
TO LEARN
MORE**

Danger Trees are outside the right of way and are large enough to potentially cause power outages to large areas. Identifying Danger Trees is a mathematically objective process based on tree height and proximity to the transmission lines. For your safety and to ensure reliable electric service, Danger Trees will be removed.

To comply with environmental regulations, trees can only be felled during certain times of year to avoid hibernation or pup/nesting

seasons. In your neighborhood, we may be felling trees through mid-March 2026. Crews will remove debris during and after felling operations. Cleanup to a reasonable standard of care will be targeted within two weeks of completion of your property.

Once the lines are energized, the vegetation will be maintained to proactively minimize the risk of potential power outages.

Trees are an important part of your property, and we are dedicated to being respectful and providing as much information as possible regarding the vegetation and tree removal process. Thank you for your patience as work is completed in your community.

CONTACT US

Website: DominionEnergy.com/Yadkin-Fentress
Email: powerline@dominionenergy.com
Phone: 888-291-0190

Protecting the grid against natural and man-made acts is a top priority. You can learn more about our commitment to safety at powerlines101.dominionenergy.com.



This map is intended to serve as a representation of the project area and is not intended for detailed engineering purposes.

- Transmission Line
- Transmission Pole <150FT tall
- ROW Boundary (235 feet wide)
- Transmission Pole >150FT tall



UPCOMING VEGETATION AND TREE REMOVAL

WHERE

Right of way corridor between
the Coopers Ditch area and near
Etheridge Road

WHEN

Before mid-March 2026

Schedule is subject to change pending final approvals, permits, weather, and progress. Upon completion, we will restore the right of way.



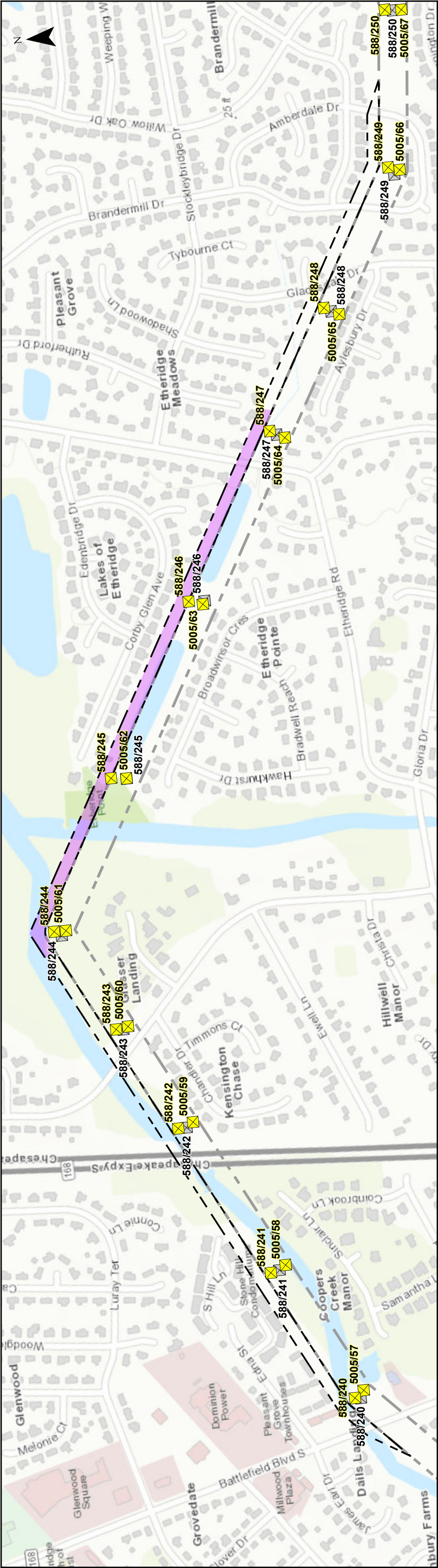
Tree
work



Crews
in your area



Work
in your area

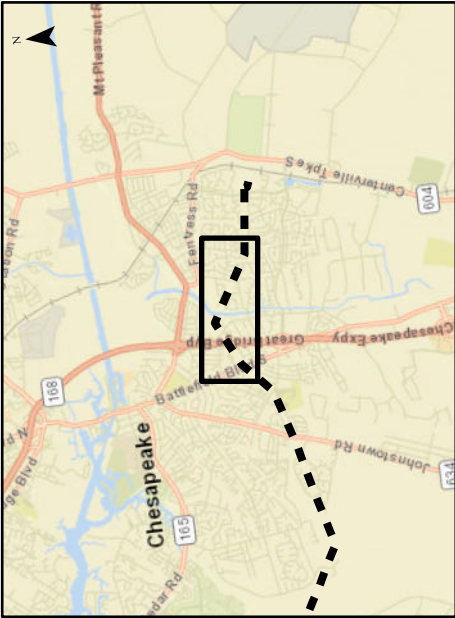


STRUCTURE TABLE

Existing Line #588 Structure Number	588/240	588/241	588/242	588/243	588/244	588/245	588/246	588/247	588/248	588/249
Existing Height (FT)	136	121	116	90	97	127	111	110	100	107
Proposed Line #588 Structure Number	588/240	588/241	588/242	588/243	588/244	*588/245	*588/246	588/247	588/248	588/249
Proposed Height (FT)	177	182	182	182	172	150	150	177	177	172
Proposed Line #5005 Structure Number	5005/57	5005/58	5005/59	5005/60	5005/61	*5005/62	*5005/63	5005/64	5005/65	5005/66
Proposed Height	187	182	187	177	182	150	150	177	177	177

*Structure locations and heights reflect the delta configuration.

- Notes:
- Structure locations and heights provided by Dominion Energy Virginia.
 - Project and structures are subject to change based on final engineering design. The proposed structure heights are above ground level, and exclude foundation reveal.
 - Basemap from ESRI Topographic and World Street Map.



- Existing Line #588 Right-of-Way (maintained at 150 FT)
- Constraint Design Segment
- Right-of-Way Clearing for Delta Configuration Structures (85 FT)
- Existing Structure
- Proposed Structure



CDS STRUCTURE LOCATION MAP

Fentress-Yadkin 500 kV Line #588 Rebuild and New 500 kV Fentress-Yadkin Line #5005

City of Chesapeake, Virginia

Owner/ Applicant:

Dominion Energy Virginia

C2 Env Project: 0326
Prepared By: BTW
Date: 01/22/2026

SHEET 6 OF 6