

Yadkin-Fentress 500 kV Electric Transmission Project City of Chesapeake, Virginia

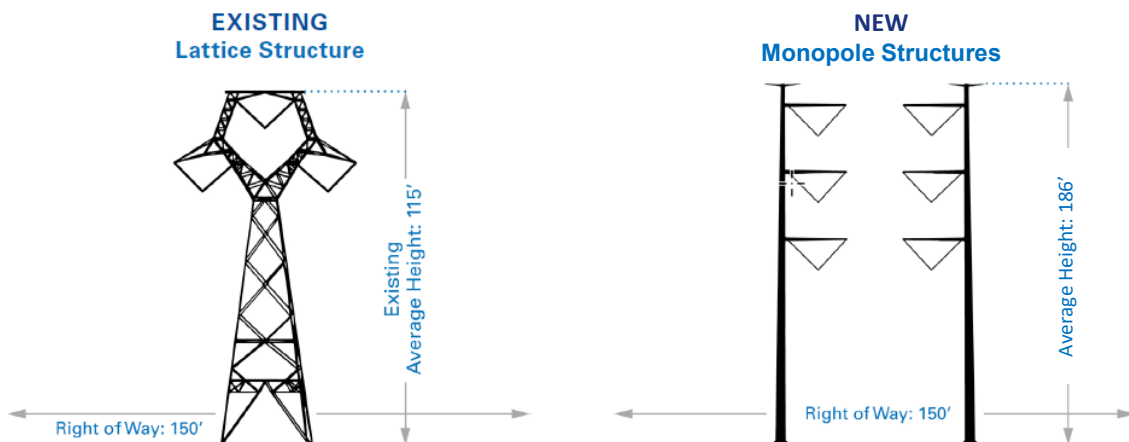


This project will rebuild an existing line (#588) and will build a new line (#5005.) This work will maintain system reliability and successfully integrate new electric generation with the current transmission system.



Project Fast Facts:

- 13.5 miles between Yadkin and Fentress substations.
- Plan to use existing, maintained right of way.*
**Except portion of Constraint Design Segment (235 feet wide existing right of way)*
- The existing lattice tower structures with one 500 kV line will be replaced by 2 dull galvanized monopole structures with two 500 kV lines.
- New monopoles will be an average of 186 feet tall, which is 71 feet taller than the existing structures.
- Where possible, new poles will be placed in similar locations as the existing structures.



Want to know more? Go to GeoVoice!

- GeoVoice is your key to discovering more about the new structures along the route.
- Search for a specific address to see proximity to structures.
- Leave a message for the project team.
- A project team member may follow up for any additional details or discussion. **What matters to you, matters to us.**
- Scan the QR code or find GeoVoice on the project website.



website: [DominionEnergy.com/Yadkin-Fentress](https://www.dominionenergy.com/Yadkin-Fentress)

email: powerline@dominionenergy.com **phone:** 888-291-0190

¿Habla español? Escanee este código QR o visite [DominionEnergy.com/Yadkin-Fentress](https://www.dominionenergy.com/Yadkin-Fentress) para solicitar estos documentos en español.

Yadkin-Fentress 500 kV Electric Transmission Project City of Chesapeake, Virginia



This project will rebuild an existing line (#588) and will build a new line (#5005.) This work will maintain system reliability and successfully integrate new electric generation with the current transmission system.



Project Timeline:

- Phase 1 will be completed in 2025, except for a few structures at I-64/Yadkin Substation in 2026.
- Phases 2 and 3 will begin in spring and summer 2025, starting from Yadkin Substation and working towards Fentress Substation.
- Line #588 will be rebuilt by June 2026. Crews will then double-back to finish building Line #5005 in Phases 2 and 3 by December 2026.

Schedule is subject to change pending final approvals, permits, weather, and progress.

Line
#588

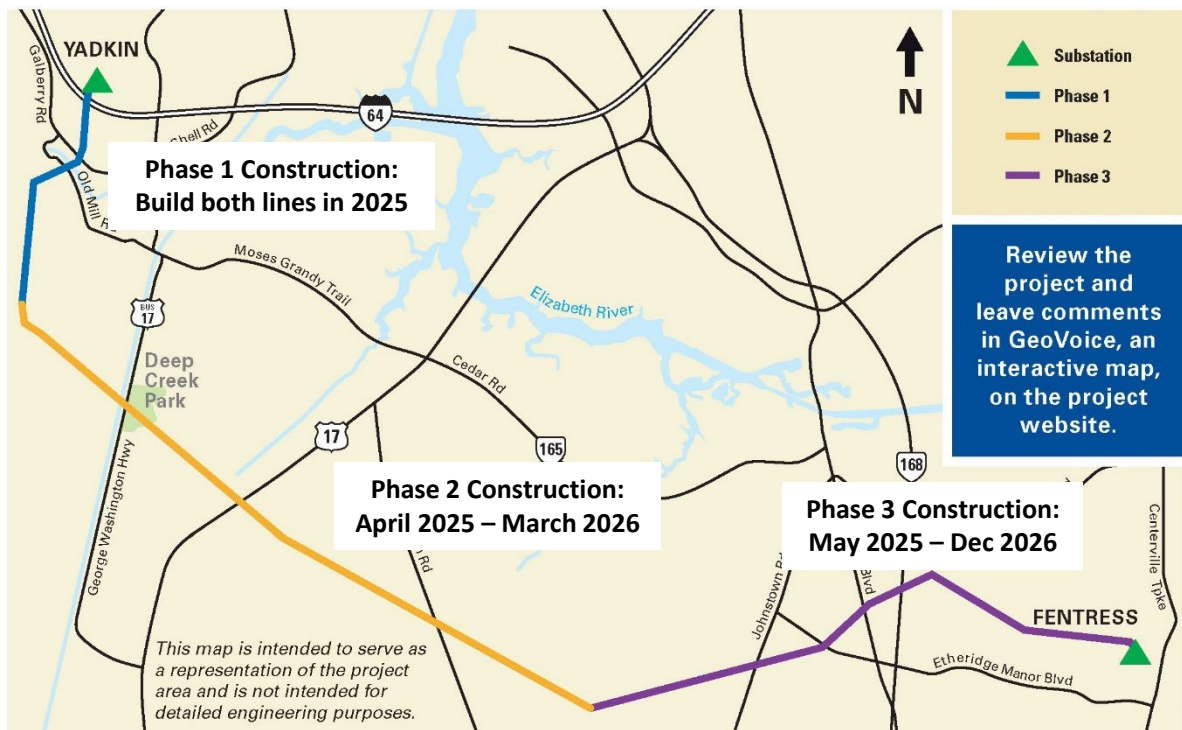
March - July 2025:
Yadkin -Weiss Lane

April 2025 - June 2026:
Appaloosa Tr - Fentress

Line
#5005

March - Sept 2025:
Yadkin -Weiss Lane

April 2025 - Dec 2026:
Appaloosa Tr - Fentress



website: [DominionEnergy.com/Yadkin-Fentress](https://www.dominionenergy.com/Yadkin-Fentress)

email: powerline@dominionenergy.com **phone:** 888-291-0190