



Electric Transmission
P.O. Box 26666
Richmond, VA 23261

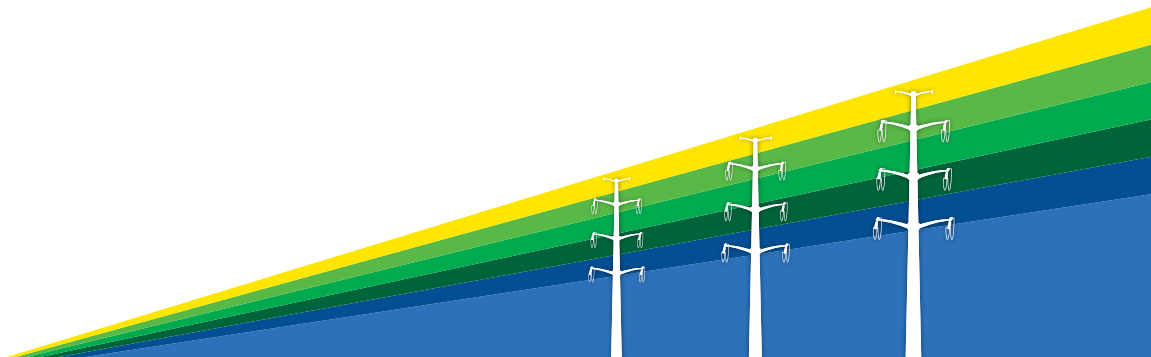
**Learn more about upgraded transmission lines
in the City of Chesapeake, Virginia.**



**SCAN HERE
TO LEARN
MORE**

Investing in Our Communities

Dominion Energy image. Not project specific.



We are working in your community

Yadkin-Fentress 500 kV Electric Transmission Line Project

At Dominion Energy, we provide the reliable, affordable, and increasingly clean energy that powers your every day. You are receiving this postcard to inform you of upcoming transmission line activities.



SCAN HERE
TO LEARN
MORE

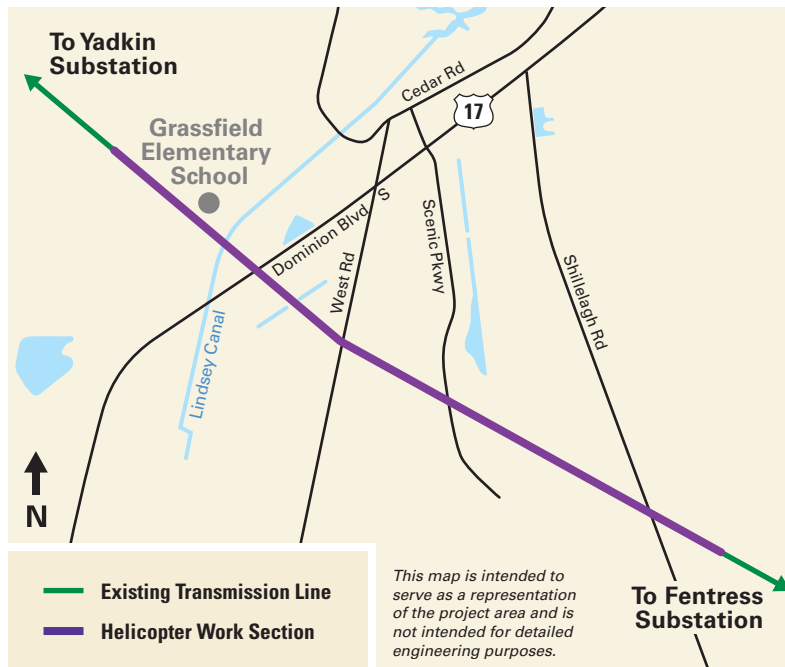
Existing wires are being removed in January 2026. In February, a non-Dominion Energy helicopter will help install new transmission lines and communication fiber from the Grassfield Elementary School area to near Shillelagh Road in the City of Chesapeake, Virginia.

The work is scheduled for Monday to Saturday, between 8:30 a.m. and 5:00 p.m. Flights

are weather-dependent and subject to change. To ensure everyone's safety, temporary traffic interruptions will occur (less than five minutes at a time) when the helicopter pulls lines over the road. Traffic signs will be posted, and flaggers or police will be present to temporarily stop traffic. Spotters will also be present on adjacent sidewalks and shared use paths.

We respectfully remind neighbors who reside near the work zone to remain outside the right of way during overhead work. Safety is our highest priority, and this is an active construction zone. Safety perimeters serve as reminders of the work zone boundaries and help keep you safe while we work overhead.

Thank you for your patience while we complete this work. Construction near you is expected to end in late spring 2026, and we will restore the right of way with grass, low-growth vegetation, or wetland species through summer. Please connect with us if you have questions.



— Existing Transmission Line
— Helicopter Work Section

This map is intended to serve as a representation of the project area and is not intended for detailed engineering purposes.

Protecting the grid against natural and man-made acts is a top priority. You can learn more about our commitment to safety at powerlines101.dominionenergy.com.

TEMPORARY TRAFFIC IMPACTS

WHY

To ensure your safety while line work is completed by helicopter

WHEN

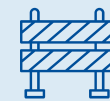
February 2026
Monday – Saturday
8:30 a.m. – 5:00 p.m.

WHERE

Between Grassfield Elementary School area and near Shillelagh Road



New
infrastructure



Temporary traffic
impacts



Helicopter work
in your area

CONTACT US

Website: DominionEnergy.com/Yadkin-Fentress
Phone: 888-291-0190
Email: powerline@dominionenergy.com