

Cumberland Energy Center

May 28, 2026



Agenda

- 1 Dominion Energy in Cumberland County**
- 2 How the Grid Works**
- 3 Project Overview**
- 4 Project Considerations & Visuals**
- 5 Community Benefits**
- 6 Next Steps & Opportunities for Feedback**

Dominion Energy in Cumberland County



2,993 customers



80+ constituents



105 community members participated in regulated energy conservation programs



40+ miles of middle-mile broadband fiber

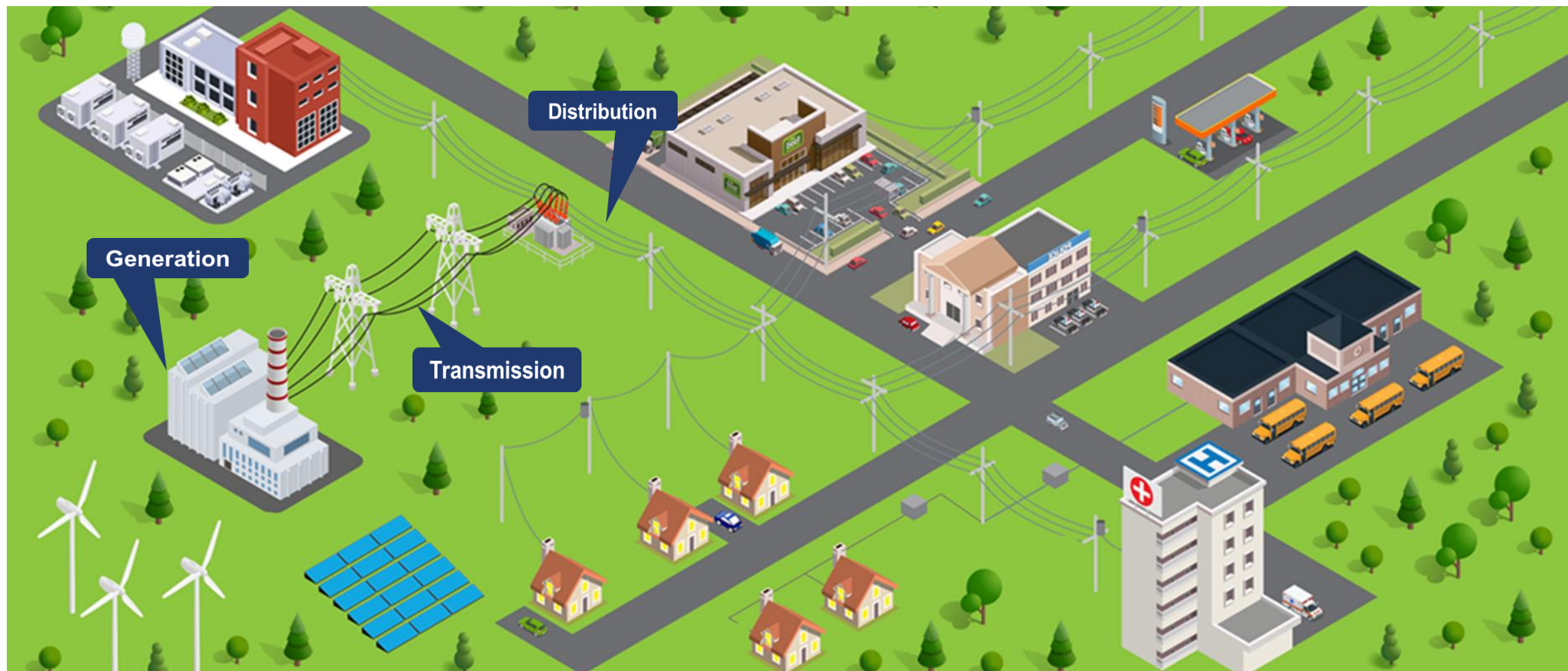


\$24,000 in area charitable contributions



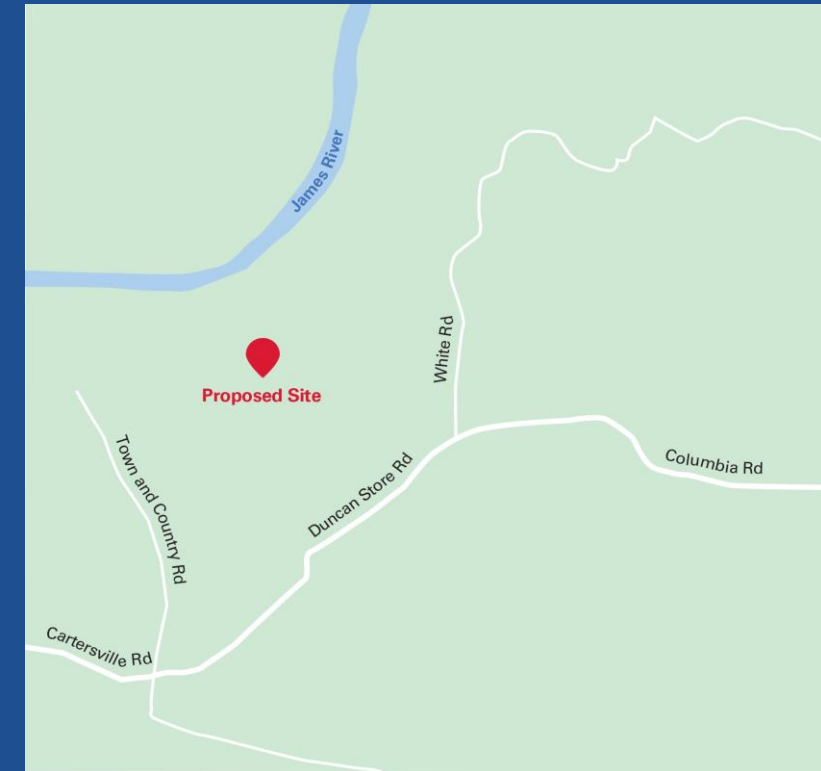
\$320,000+ property taxes paid

How the Grid Works



Project Overview

- Two, 2-on-1 combined-cycle units producing ~3 gigawatts (GW) of power
 - Enough to power up to 750,000 homes
- Combined-cycle units operate as baseload, around-the-clock, units
 - Use of natural gas and steam turbines
 - Flexibility in load level operation
 - Meet everyday power demands efficiently
- Located off Duncan Store Road
 - District 1
 - ~150 acres of project property
 - ~972 acres of total property



Project Overview



Renderings subject to change

Project Considerations



Emissions

- Utilizing Best Available Control Technology (BACT) to reduce emissions
- Implementation of emissions control and advance class technologies



Sound

- During normal operations, sound will not exceed 75 dB at the property boundary
- During normal operations, sound should not exceed 65 dB at nearest residence



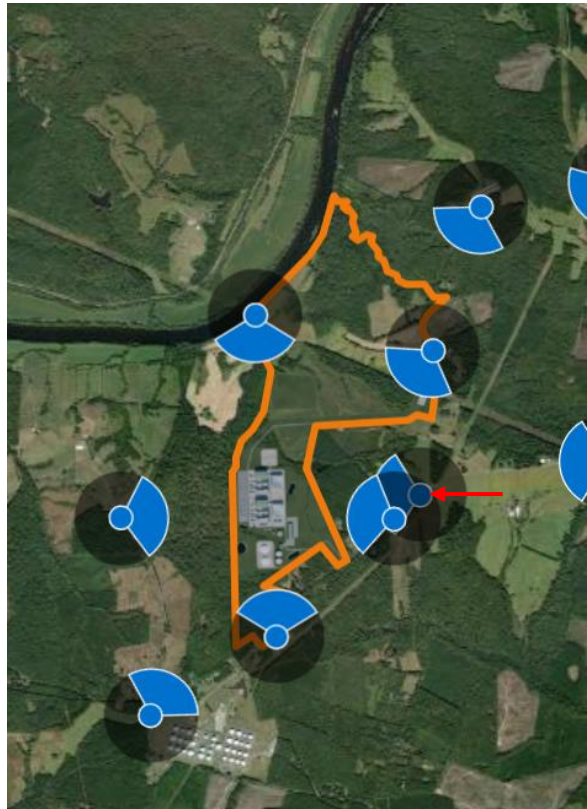
Visual

- Initial analysis shows limited viewshed impact due to natural land characteristics
- Efforts to minimize viewshed impact to the community

Visualizations



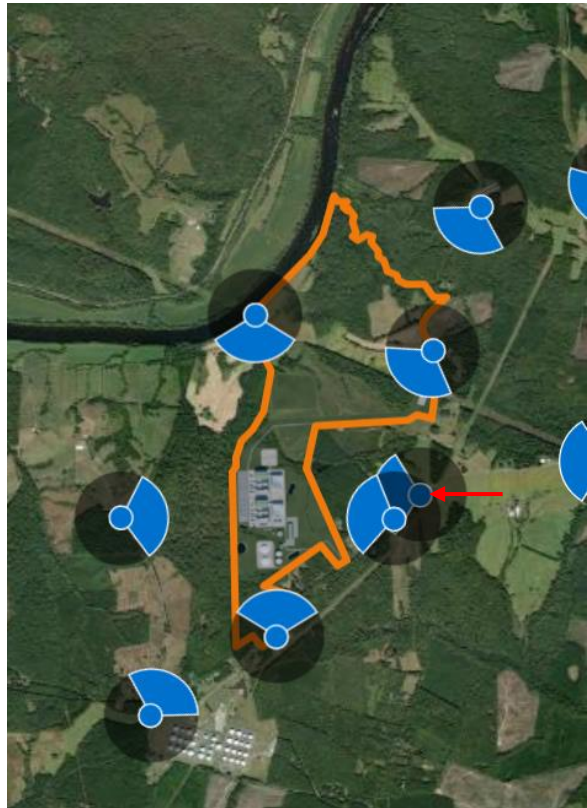
Visualizations



View facing West from Duncan Store Road



Visualizations

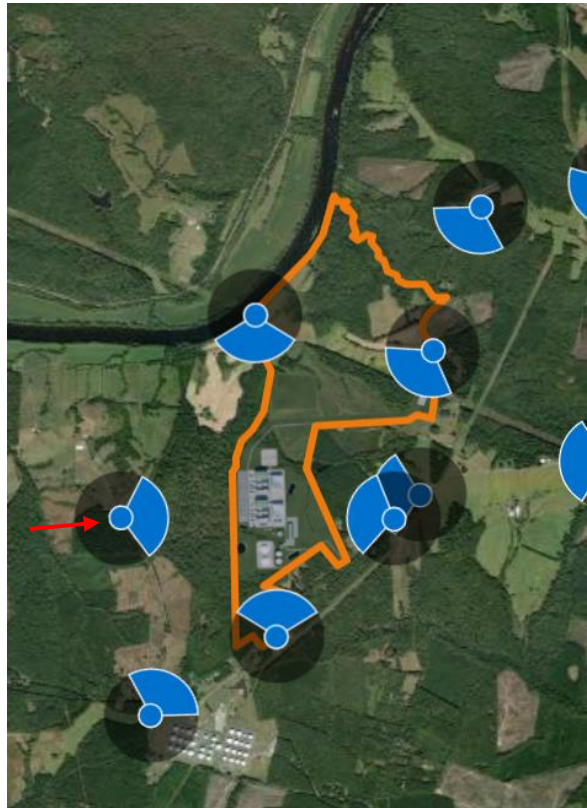


View facing West from Duncan Store Road



① Infrastructure is not visible from this Key Observation Point

Visualizations

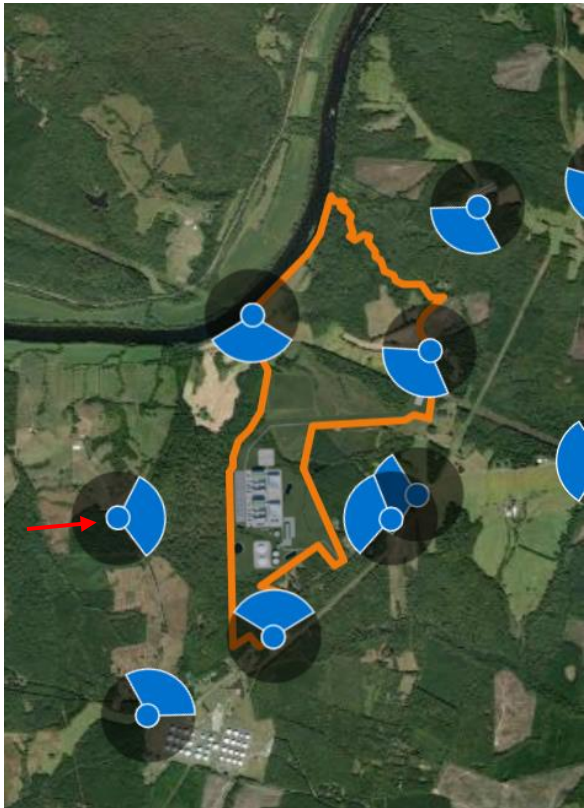


View facing East from Town and Country Road



Zoomed In

Visualizations

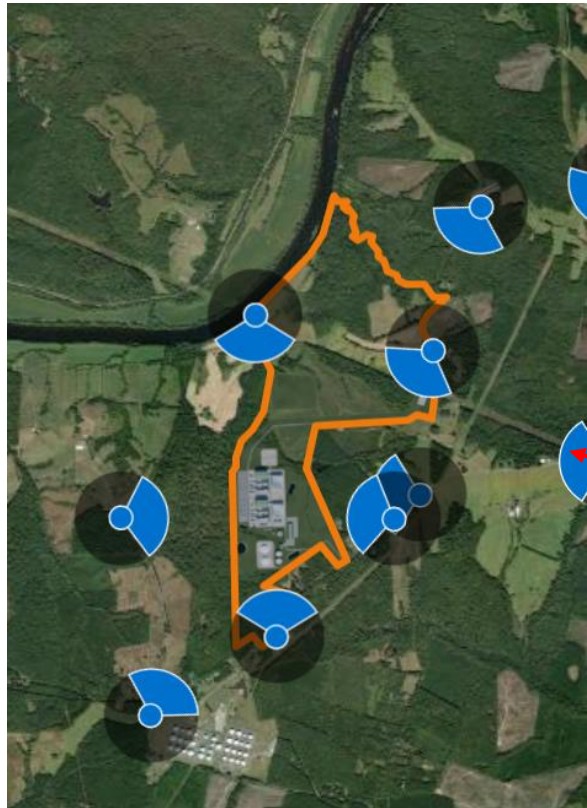


View facing East from Town and Country Road



① Infrastructure is not visible from this Key Observation Point

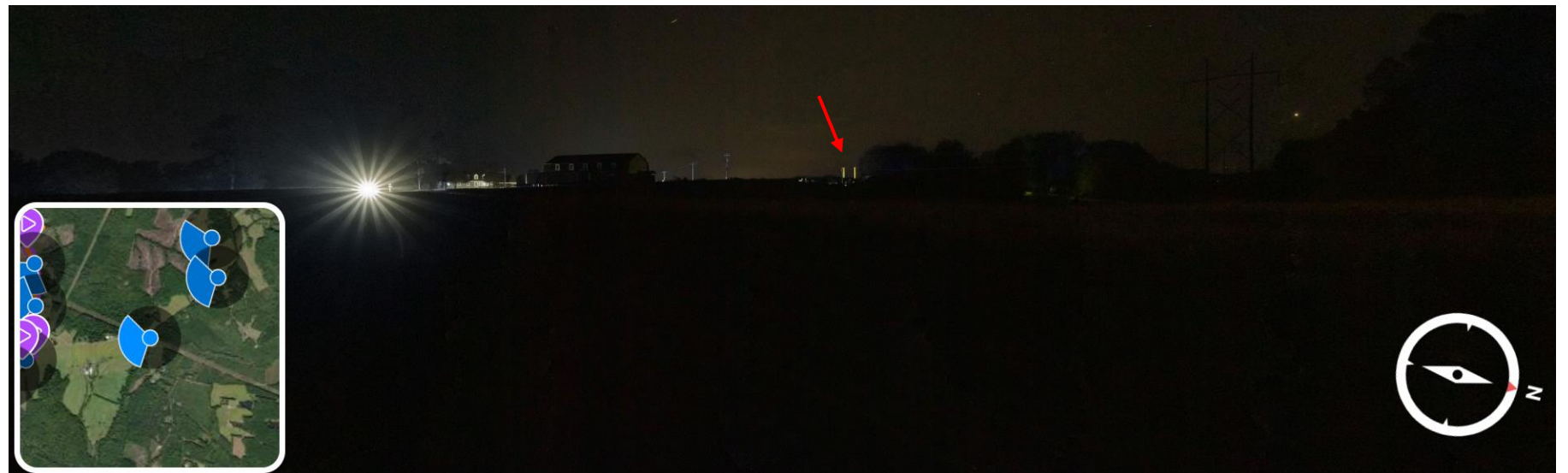
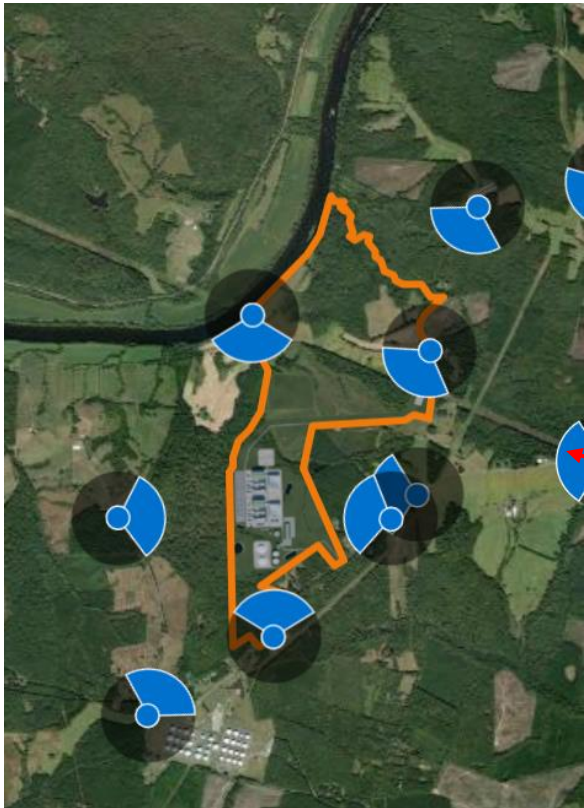
Visualizations



*View facing West from
Columbia Road*



Visualizations



*View facing West from
Columbia Road*

Cumberland County Benefits

During Construction



336 direct and indirect jobs



\$71.8 Million in economic activity



\$16 Million in wages and benefits

During Operations



102 direct and indirect jobs



\$142 Million in annual economic activity



Over \$500 Million in tax revenue to Cumberland County (over 1st 35 years)

Anticipated Project Timeline



**June-December
2026**

**January-May
2027**

2029

2033/2034

Submit CUP to
Cumberland County

Submit CPCN to VA
SCC

Begin Construction

Begin Operations

Submit Air Permit to
VA DEQ

Community engagement and project development will take place throughout the permitting processes

Public Engagement Opportunities



Conditional Use Permit

- Community Meetings and Open Houses
- Planning Commission Public Hearing
- Board of Supervisors Public Hearing



Air Permit

- DEQ Informational Briefing
- DEQ Public Comment Period
- DEQ Public Hearing
- DEQ Comment Public Hearing



CPCN

- SCC Public Comment Period
- SCC Public Testimony

Dominion Energy will host community meetings and open houses throughout the permitting process

Project Contact Information



Website

[Dominionenergy.com/cumberlandenergy](https://dominionenergy.com/cumberlandenergy)



Phone

434-842-4179



Email

cumberlandenergy@dominionenergy.com



Next Community Meeting

June 8, 5:30PM-7:00PM

Cartersville Volunteer Fire Dept.



**Dominion
Energy[®]**

Powering Your Every Day.

APPENDIX

Combined Cycle

