



**Dominion
Energy[®]**

Welcome to the Large Customer Seminar

May 21, 2026

Agenda

9:00 AM – 9:30 AM	Introduction & Housekeeping	Charles Newton , Manager – Large Customer Group
	Welcome	Keller Kissam , President - DESC
9:30 AM – 9:40 AM	Safety	Doug Hemminghaus , Manager – Physical Security
9:40 AM – 10:00 AM	Large Customer Account Services	Charles Newton
10:00 AM – 10:20 AM	Regulatory and Legislative Update	John Raftery , Vice President – Regulatory Affairs
10:20 AM – 10:40 AM	Integrated Resource Plan Overview	Betty Best , Director – Strategic Planning
10:40 AM – 11:00 AM	Break	
11:00 AM – 11:20 AM	System Reliability & Storm Season Preparation	Brandon Ashley , Vice President – Transmission & Delivery
11:20 AM – 11:40 AM	Electric Construction Projects	Kelvin Rogers , General Manager – Electric Transmission & Construction
11:40 AM – 12:00 PM	Natural Gas Business Update	John Beier , Manager – Gas Supply
12:00 PM	Lunch & Learn Session	
	Electrical Energy Efficiency Incentives Natural Gas Rebates	

Housekeeping

- ✓ Please place your cell phones on vibrate or silent.
- ✓ Virtual participants, please type your questions in the chat.
- ✓ Bathrooms are located to the left of the Check In table.
- ✓ In case of an emergency, the nearest exit is outside the OSC 163 doors and down the hallway.
- ✓ All seminar activities will be held in OSC 163 & 120A. Please do not roam the building.

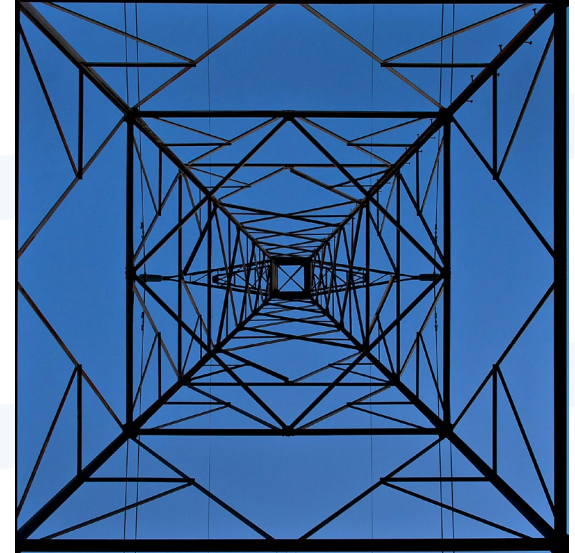


**Dominion
Energy®**

Welcome

Keller Kissam

President – Dominion Energy South Carolina



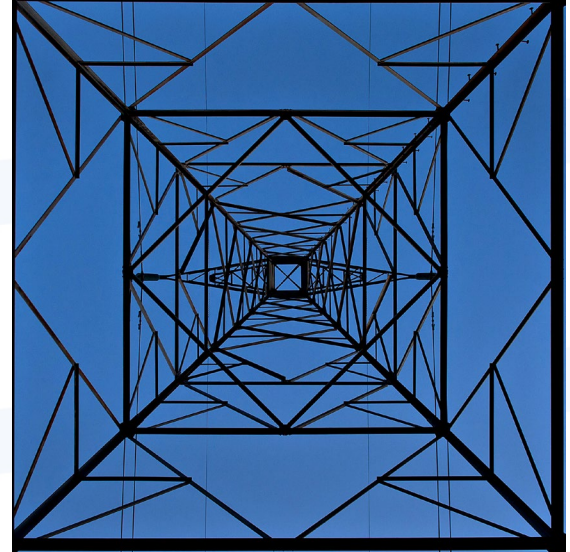


**Dominion
Energy®**

Safety

Doug Hemminghaus

Manager – Physical Security





Large Customer Group

Energy to Meet Your Goals

Our goal is to provide reliable and increasingly clean energy along with the latest information to assist you in meeting your energy goals.

Charles Newton

Manager – Customer Service & Strategic Partnerships



Website - Large Business Services

- <http://www.dominionenergy.com/south-carolina/large-business-services>



Alerts



Location - SC



Support



Search



Sign In

Pay My Bill ▾

Start, Stop or Move ▾

Outage or Emergency ▾

Save Energy & Money ▾

Products & Services ▾



NOTICE: Scheduled website updates in progress. If you experience a temporary issue, please refresh your page – things should be back t... ▾ ×

Large Business Services

We help large businesses and federal agencies manage their energy solutions.

Feedback

Website - Large Business Services

- <http://www.dominionenergy.com/south-carolina/large-business-services>



Large Customer Account Services

Access information about available services and account manager contact information.

[View Account Services](#) →



Presentations

Download presentations from past customer meetings and workshops.

[View & Download Presentations](#) →

Website - Large Business Services

- <http://www.dominionenergy.com/south-carolina/large-business-services>



Government Solutions

We partner with federal agencies to deliver mission-critical energy services.

[Federal Energy Solutions](#) →



Large Volume Business Rates

Find a rate plan that fits the way your company uses energy.

[View Rates](#) →

Website - Large Business Services

- <http://www.dominionenergy.com/south-carolina/large-business-services>

MV-WEB™ for Interval-Metered Customers

Dominion Energy South Carolina offers an interactive meter data analysis service (MV-WEB™) for interval-metered customers to perform load profiling.

Through our MV-WEB™ service, you can:

- View load profile for any date range and interval (15 min, hourly, daily, weekly, monthly, etc.) in tabular and graph forms
- Aggregate or compare profiles for any grouping of meters
- Report options include load profile, peak day, load duration, and contributors report
- Automate reports on a schedule
- Export interval data for further analysis (CSV format to Excel, etc.)

[Log Into MV-WEB](#) →

Interruptible Service Program

This program is available to industrial customers on Rate Schedules 23 or 24, that can contract for 1,000 KW of interruptive demand or greater during the months of June through September.

Participating customers receive a discount on their demand charges for shedding load when Dominion Energy South Carolina is short of capacity. This program has limited capacity, so contact your account manager to discuss this option in more detail.

[View the Interruptible Service Rider](#) →



Website - Large Business Services

- <http://www.dominionenergy.com/south-carolina/large-business-services>

CME Group Website

Natural Gas & Other Energy Futures

The CME Group website contains the latest information about natural gas futures and options contracts and other energy futures traded on the CME.

Disclaimer: This information is provided for informational purposes. Dominion Energy does not control or maintain this information. CME Group provides and maintains this information and Dominion Energy does not guarantee or warrant the accuracy, completeness, or timeliness of the information on the CME Group site.

To learn more, visit cmegroup.com →

Natural Gas Contracting

On October 2, 2023, the Public Service Commission of South Carolina issued an order that requires all Rate 34, Rate 35, and interruptible customers to select a natural gas rate for which they qualify by January 1, 2025. Customers were required to begin taking service under their new rate effective April 1, 2025.

There are four rate options for which a customer may qualify:

1. Rate 34 (Firm Sales)
2. Rate 36 (Firm Transportation)
3. Rate 54 (Interruptible Sales)
4. Rate 55 (Interruptible Transportation)

Customers who select one of the transportation tariffs (Rate 36 or Rate 55) are required to use an approved marketing/pooler.

Your assigned account manager is available to discuss contracting options. You can reach us at [866-913-9782](tel:866-913-9782).

[View Rates and Tariffs](#)

[View a list of approved marketers/poolers](#) →



Customer Offerings

- Account Reviews
- Load Profiling
- Best Rate Analyses
- Power Quality Technical Services
- Electric Service Information for Arch Flash Studies
- Consolidated Billing



Customer Tools

- Online Account Access for Billing and Usage Retrieval
- MV-WEB – Online Electric Data for Analysis
- Gas EBB – Online Natural Gas Data for Analysis



Customer Tools

Online Account Access for Billing and Usage Retrieval

Accounts Sign Out

Account: [Redacted] Show Full [Report Outage](#) Menu

Skip the Paper Bills
Go paperless and get an email when your bill is ready to view online. [Yes! Sign me up.](#) [Maybe later](#)

Current Balance
\$36,810.67
Due May 22, 2026
[Make Payment](#)

[Need Help or Time to Pay?](#)

Charges	Due	
Current	May 22, 2026	\$36,810.67

- My Latest Bill**
View your bill and payment history. [>](#)
- Start Automatic Payments**
Never miss a payment again. [>](#)
- Payment Settings**
Update your payment method and more. [>](#)
- Messages**
Stay informed with account-related messages. [>](#)

INTERACTIVE

Analyze My Energy Use
Explore monthly energy trends and bill differences!

[Go to Energy Analyzer](#)

My Usage History

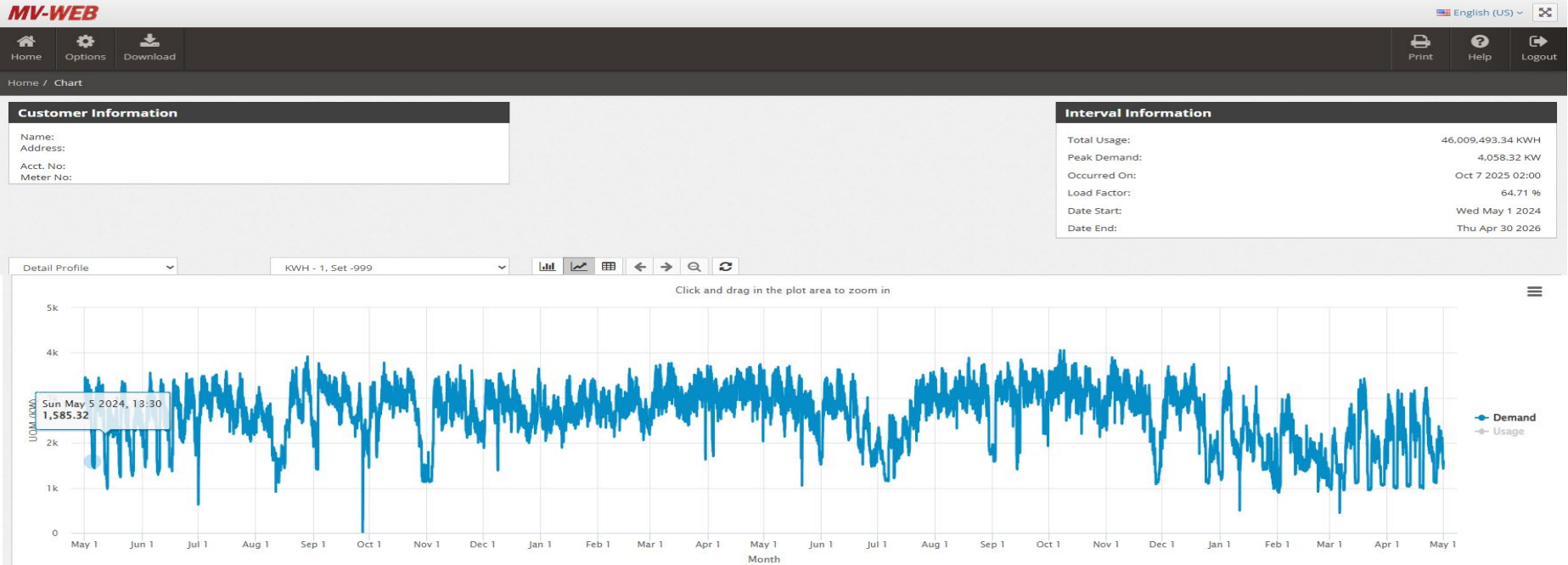
[Create a Report](#) [Bill History](#) [Load Analysis](#)

Bill Date	Read Date	Billing Days	kWh Used	Peak kW	Peak kVA
05/01/26	04/30/26	30	8,731,760	40,960	43,689
04/01/26	03/31/26	31	8,307,920	49,760	54,635
03/02/26	02/28/26	28	3,531,640	53,760	66,913
02/02/26	01/31/26	31	8,862,840	52,960	61,960
01/02/26	12/31/25	31	4,272,280	51,520	69,764
12/01/25	11/30/25	30	7,782,160	47,680	61,120
11/03/25	10/31/25	31	7,473,760	33,920	37,852
10/01/25	09/30/25	30	7,046,120	32,640	36,211
09/02/25	08/31/25	31	8,931,400	39,040	43,227
08/01/25	07/31/25	31	8,352,880	49,920	51,698
07/01/25	06/30/25	30	5,958,120	29,760	32,589
06/02/25	05/31/25	31	5,081,400	24,320	30,400



Customer Tools

- MV-WEB – Online Electric Data for Analysis





Customer Tools

- Gas EBB – Online Natural Gas Data for Analysis

Hourly Measurement

Gas Day From = 5/1/2026 Gas Day To = 5/12/2026, Customer =

Acct#	Rate(s)	Meter	CCF	MCF	Dth	BTU Gas Day	From	To
2-1512-0001-0590	55	00125687	270.00	27.0	28.4	1.0530 05/01/2026	10:00	10:59
		7						
2-1512-0001-0590	55	00125687	250.00	25.0	26.3	1.0530 05/01/2026	11:00	11:59
		7						
2-1512-0001-0590	55	00125687	260.00	26.0	27.4	1.0530 05/01/2026	12:00	12:59
		7						
2-1512-0001-0590	55	00125687	270.00	27.0	28.4	1.0530 05/01/2026	13:00	13:59
		7						
2-1512-0001-0590	55	00125687	230.00	23.0	24.2	1.0530 05/01/2026	14:00	14:59
		7						
2-1512-0001-0590	55	00125687	220.00	22.0	23.2	1.0530 05/01/2026	15:00	15:59
		7						
2-1512-0001-0590	55	00125687	220.00	22.0	23.2	1.0530 05/01/2026	16:00	16:59
		7						
2-1512-0001-0590	55	00125687	140.00	14.0	14.7	1.0530 05/01/2026	17:00	17:59
		7						
2-1512-0001-0590	55	00125687	130.00	13.0	13.7	1.0530 05/01/2026	18:00	18:59
		7						
2-1512-0001-0590	55	00125687	110.00	11.0	11.6	1.0530 05/01/2026	19:00	19:59
		7						
2-1512-0001-0590	55	00125687	130.00	13.0	13.7	1.0530 05/01/2026	20:00	20:59
		7						
2-1512-0001-0590	55	00125687	120.00	12.0	12.6	1.0530 05/01/2026	21:00	21:59
		7						
2-1512-0001-0590	55	00125687	110.00	11.0	11.6	1.0530 05/01/2026	22:00	22:59
		7						
2-1512-0001-0590	55	00125687	120.00	12.0	12.6	1.0530 05/01/2026	23:00	23:59
		7						



Customer Programs

- Interruptible Program
- Energy Wise for Your Business
- Electric Vehicles
- Lighting Solutions



Interruptible Program

- Current rate proposal settlement expands the offering (150-225 MW)
- Maximum credits proposed to increase from \$4.50 to \$5.50
- Ideal candidates can drop load quickly to a designated firm level or can shift most or all load via backup electric generation
- Monthly credits paid based of the difference between peak usage during exposure hours and your contracted firm demand level (FDL)
- Observed annual electric savings can be substantial
- Please contact your account manager to discuss program details and potential savings for your business



Key Account Managers

- Charles Newton
 - charles.newton@dominionenergy.com
 - 803-206-6422
- Sharon Lynn
 - sharon.lynn@dominionenergy.com
 - 803-394-5569
- John Jarratt
 - john.jarratt@dominionenergy.com
 - 803-394-2375
- Brendan Levesque
 - brendan.levesque@dominionenergy.com
 - 843-296-7843
- Larki Robinson
 - larki.robinson@dominionenergy.com
 - 803-351-5004
- Will Reid
 - william.w.reid@dominionenergy.com
 - 843-614-0883
- Phonecia Myers
 - phonecia.h.myers@dominionenergy.com
 - 803-260-2652



Key Account Support Team

- Will Reid
 - william.w.reid@dominionenergy.com
 - 843-614-0883
- Shari Hammond
 - shari.hammond@dominionenergy.com
- Marilyn Townsend
 - marilyn.townsend@dominionenergy.com
- Laurie McCullough
 - Laurie.mccullough@dominionenergy.com

Future Possibilities

- Portal Access for customers -
 - Account reviews
 - Best rate analyses
 - Power quality requests
 - Load profile reports
 - Arch flash data
 - Minor electric and gas service requests
 - Lighting requests

Questions?



Dominion Energy South Carolina

2026 Large Customer Seminar

Regulatory Update

John Raftery

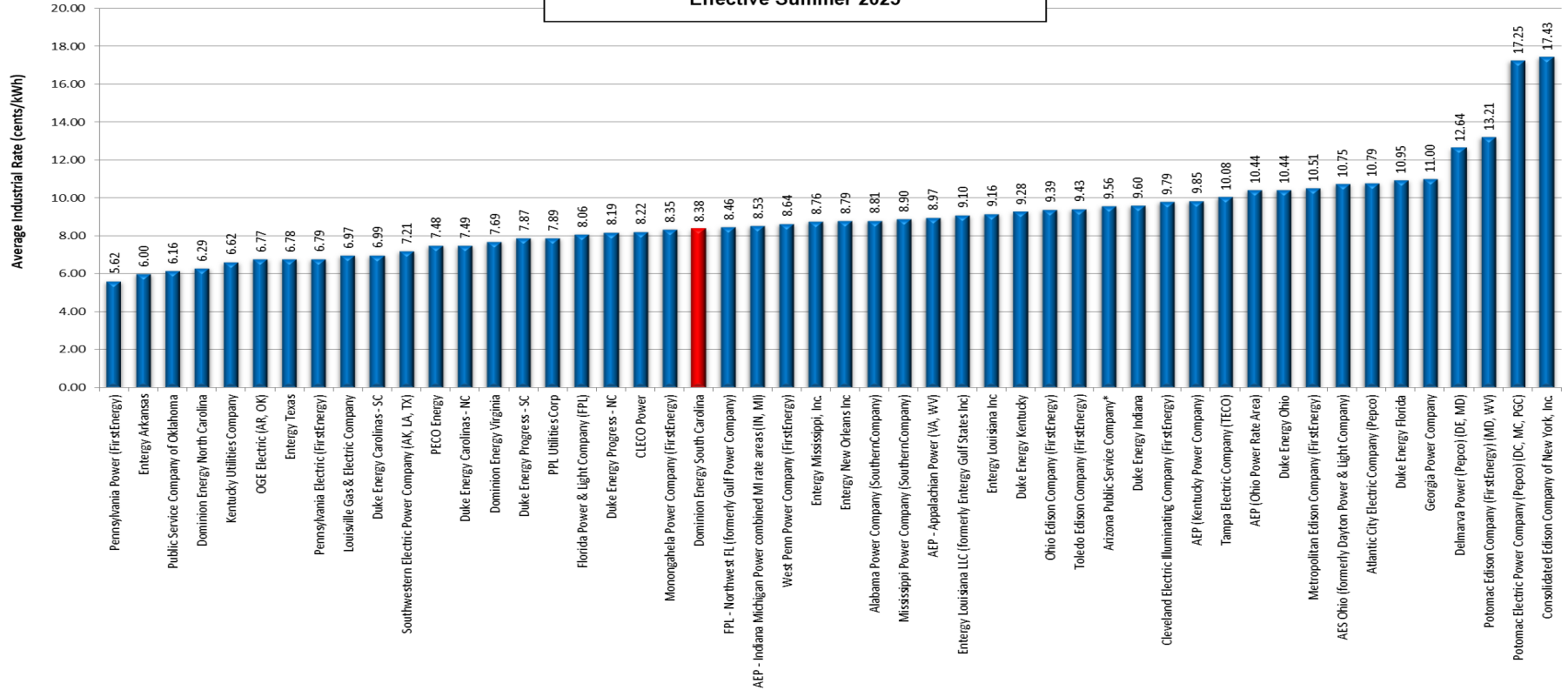
Vice President – Regulatory Affairs

Agenda

- **Electric Rates**
 - **Edison Electric Institute Rate Comparisons**
 - **Fuel Factor Changes**
 - **Rate Case Update**
- **Merger Announcement**

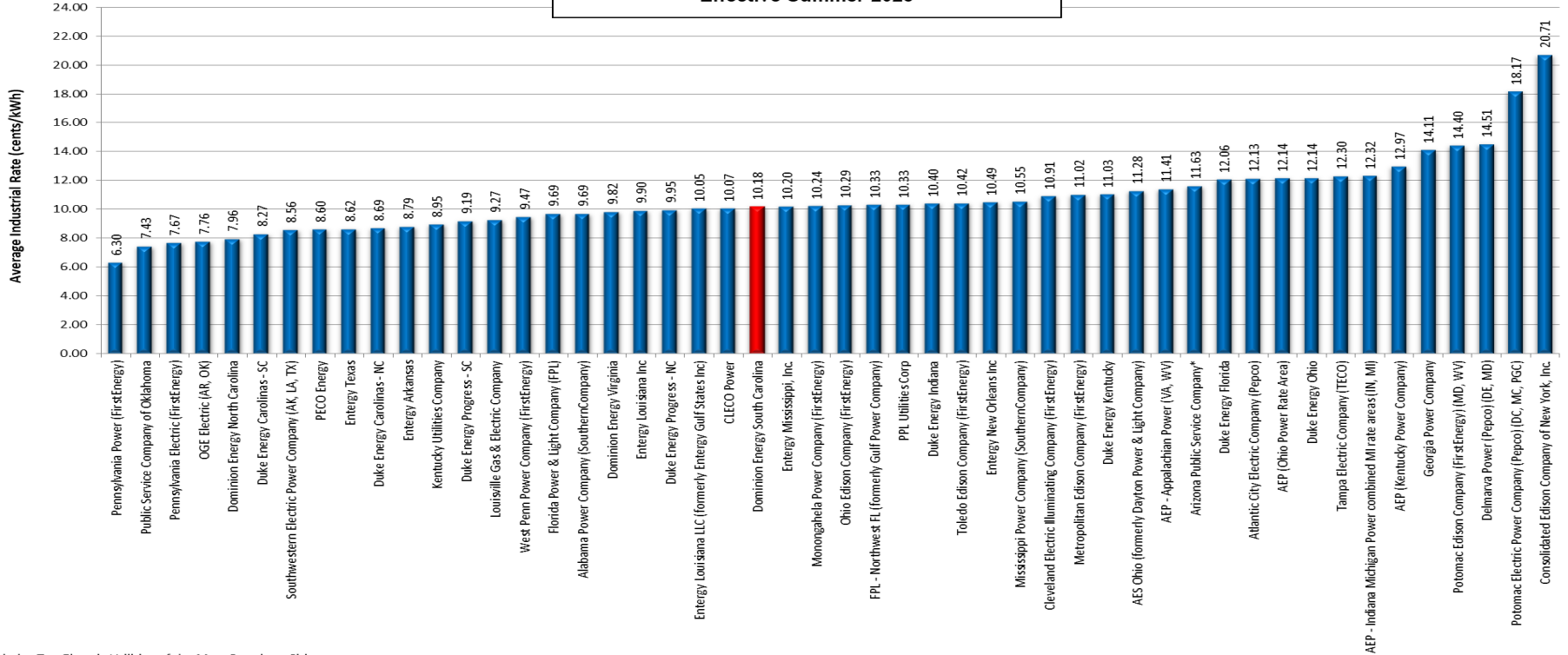
Edison Electric Institute

Dominion Energy South Carolina Rate Comparison High Load Factor Effective Summer 2025



Edison Electric Institute

Dominion Energy South Carolina Rate Comparison Medium Load Factor Effective Summer 2025



Includes Top Electric Utilities of the Most Populous Cities

Source: Edison Electric Institute | Typical Bills and Average Rates Report Summer 2025

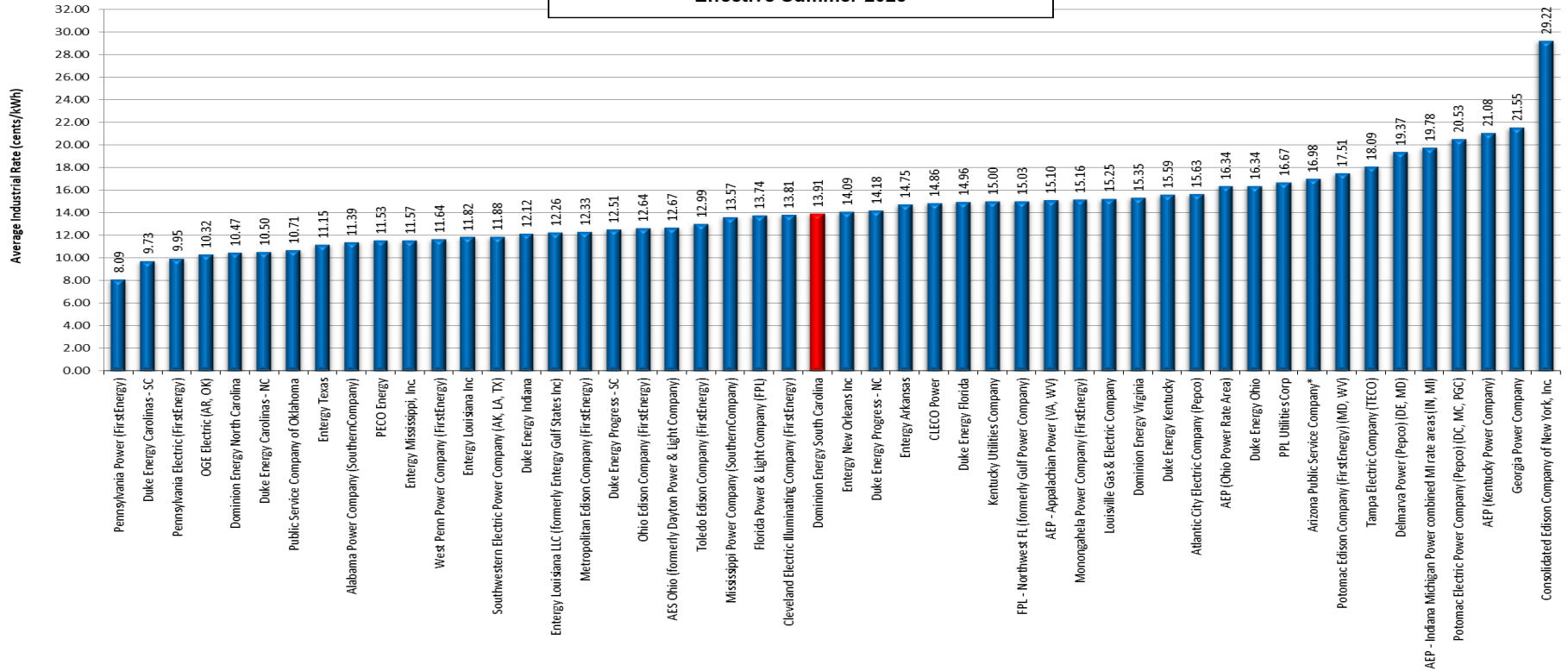
Factors: Industrial Customer, 1000 kW, 400,000 kWh, 55% Load Factor

Based on participation, the data includes Southeastern Electric Exchange Member Companies and several of the top 10 Most Populous Metropolitan Areas and the Electric Utilities that serve them.

Bills and averages compiled by the Regulatory Affairs Department of the Edison Electric Institute, using rates in effect July 1, 2025 and average revenue data from the year preceding July 1, 2025.

Edison Electric Institute

Dominion Energy South Carolina Rate Comparison Low Load Factor Effective Summer 2025



Includes Top Electric Utilities of the Most Populous Cities

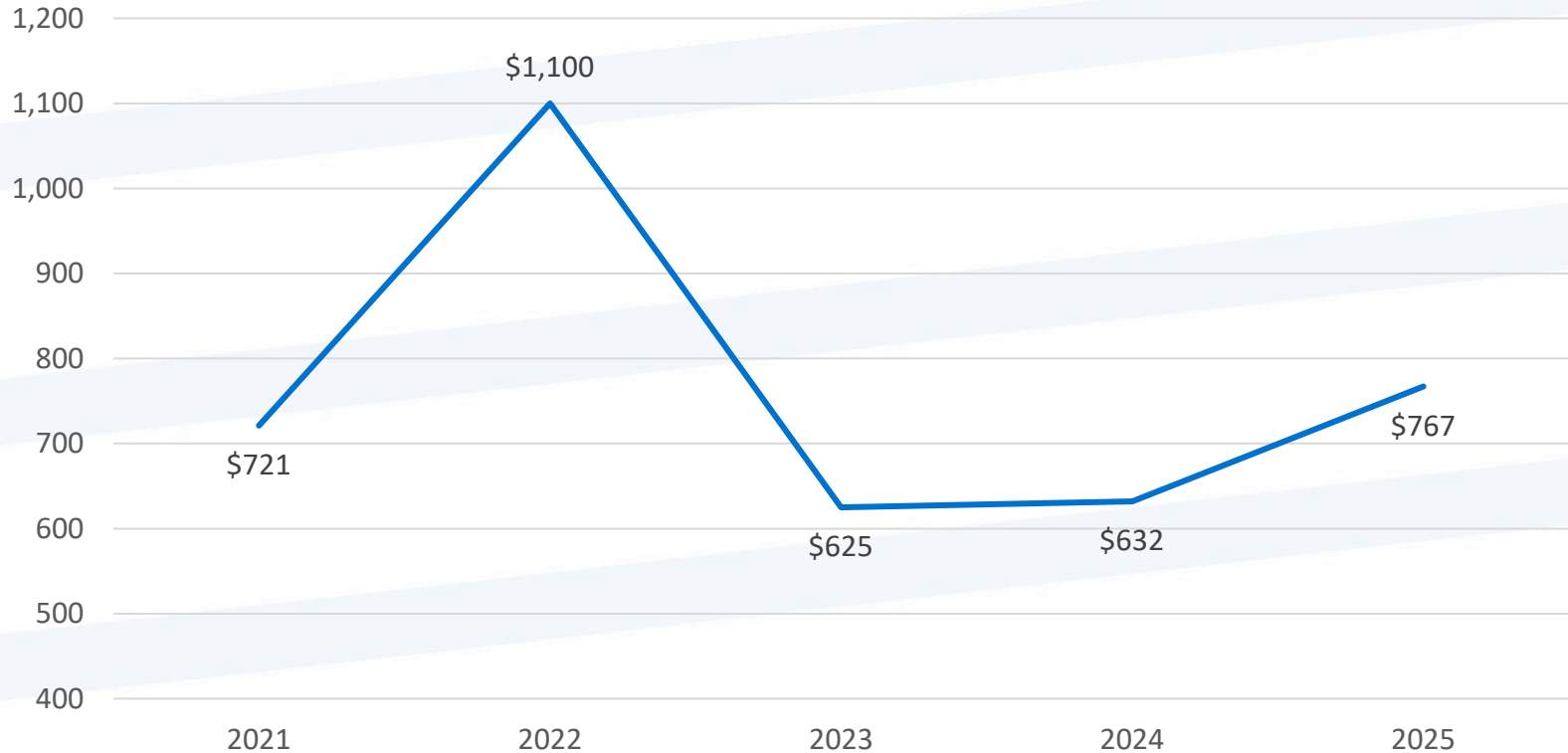
Source: Edison Electric Institute | Typical Bills and Average Rates Report Summer 2025

Factors: Industrial Customer, 1000 kW, 200,000 kWh, 27% Load Factor

Based on participation, the data includes Southeastern Electric Exchange Member Companies and several of the top 10 Most Populous Metropolitan Areas and the Electric Utilities that serve them.

Bills and averages compiled by the Regulatory Affairs Department of the Edison Electric Institute, using rates in effect July 1, 2025 and average revenue data from the year preceding July 1, 2025.

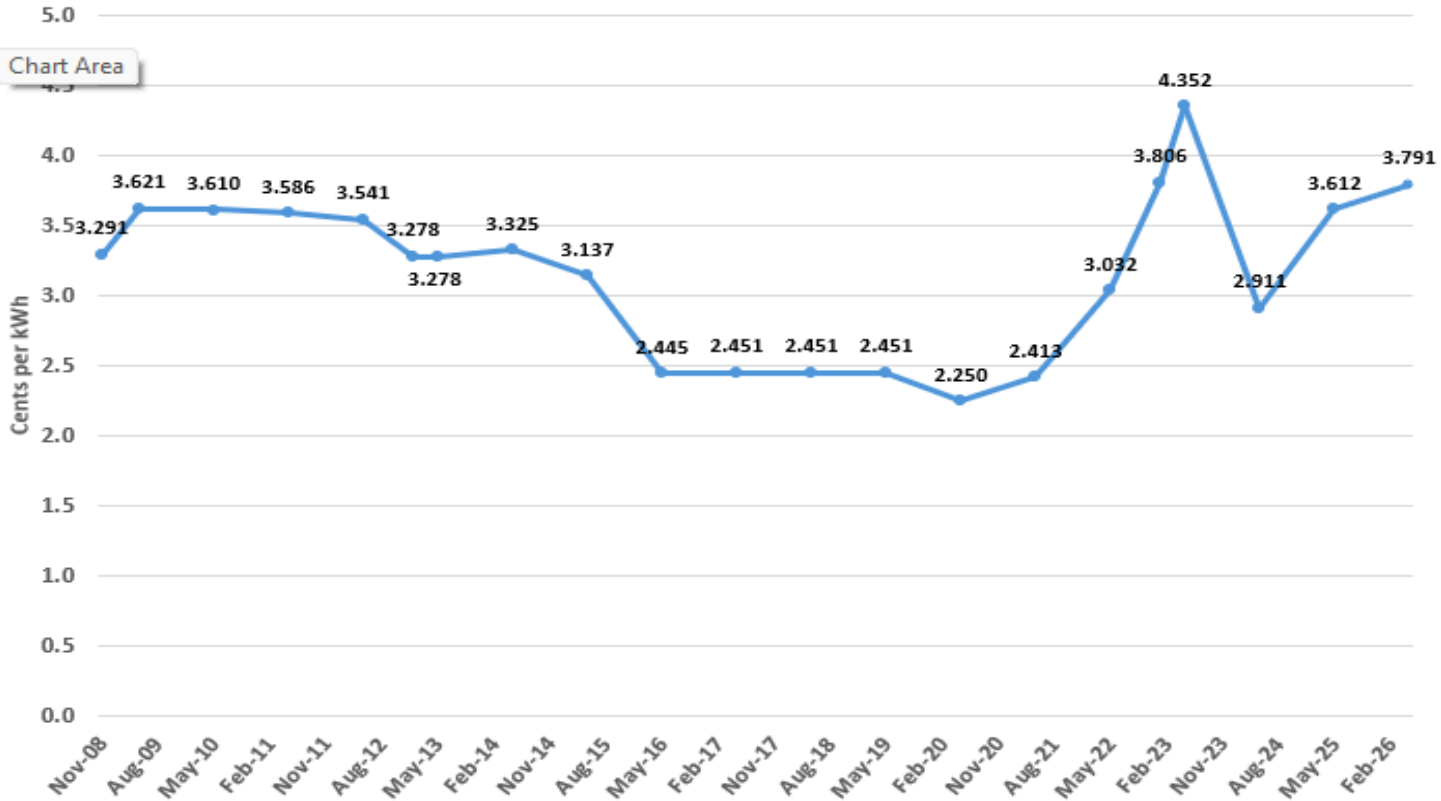
DESC Annual Fuel Expense (\$M)



Base Fuel Under/(Over) Collection Balances



Base Fuel Component History



Electric Rate Case Update

Why file an electric rate case?

- Added ~23,000 customers
- **~\$1.4B capital investment for system reliability, growth and environmental upgrades**
- \$32M property tax increases
- \$120M Hurricane Helene expenses

	Application	Settlement
Annual Revenue Increase	\$322M	\$207M
Industrial %	14.86%	9.02%

What is NOT in it?

- Canadys New CC Gas Plant
- Prospective Data Centers or Large Loads
- ✓ Filed - January
- ✓ Settlement filed – May 8
- ✓ Evidentiary hearing – May 12-13
- ☐ PSC vote - June
- ☐ New rates effective - **July**

Additional Settlement Details

- Increases to Interruptible Service Availability and Credits
- Increases to High Voltage Discount
- Participation in Large Load Tariff Docket
- **\$6M of Shareholder Funding for Low-Income Customer Assistance and Weatherization**

Merger Announcement

News Release:

[Dominion Energy Newsroom - NextEra Energy and Dominion Energy to Combine, Creating the World's Largest Regulated Electric Utility Business and North America's Premier Energy Infrastructure Platform Benefiting Customers](#)

Investor Presentation:

[Events & Presentations | Dominion Energy](#)

Questions?

Dominion Energy South Carolina 2026 Integrated Resource Plan

Betty Best
Director – Strategic Planning



**Dominion
Energy[®]**

DESC 2026 IRP

Agenda

- 2026 IRP Overview
- 2026 Build Plans
- Peak Demand and Energy Forecast
- 2026 Preferred Build Plan

DESC 2026 IRP

Introduction & Executive Summary

- Modeling & Methodology
 - Created an evaluated fourteen Build Plans and twenty-six Cases
 - Used the same modeling methods and evaluation metrics
 - Analysis focuses on three **Core Build Plans**
 - Modeled three **Alternative Core Build Plans**

- Results of the Modeling and Resource Additions under the 2026 Preferred Plan
 - 2026 Reference Build Plan shown to be superior build plan
 - 2026 Reference Build Plan is comparable to the initial years of the other thirteen build plans
 - All Build Plans require an “all of the above” approach

DESC 2026 IRP

Executive Summary

- The South Carolina Energy Security Act – Act 41 of 2025
 - Signed into law May 12, 2025
 - Passed with bipartisan supermajorities in both changes of the South Carolina General Assembly
 - Authorized Santee Cooper to jointly own with DESC one or more natural gas-fired generation facilities
 - Act 41 encouraged DESC and Santee Cooper to complete their evaluation of the project
 - Both an energy infrastructure and brownfield electric generation project under the terms of Act 41



DESC 2026 IRP

Executive Summary

- The Canadys Station
 - Need for a new gas-fired generation was initially identified in the 2023 IRP
 - Canadys Station will anchor a major expansion of natural gas pipeline capacity serving the South Carolina Lowcountry
 - DESC will lead the overall development, construction, and eventual operation of Canadys Station
 - DESC has executed equipment reservation agreements
 - DESC and Santee Cooper intend to select the EPC contractor later in 2026
 - On December 15, 2025, DESC and Santee Cooper filed a Joint Application for a CECPCN

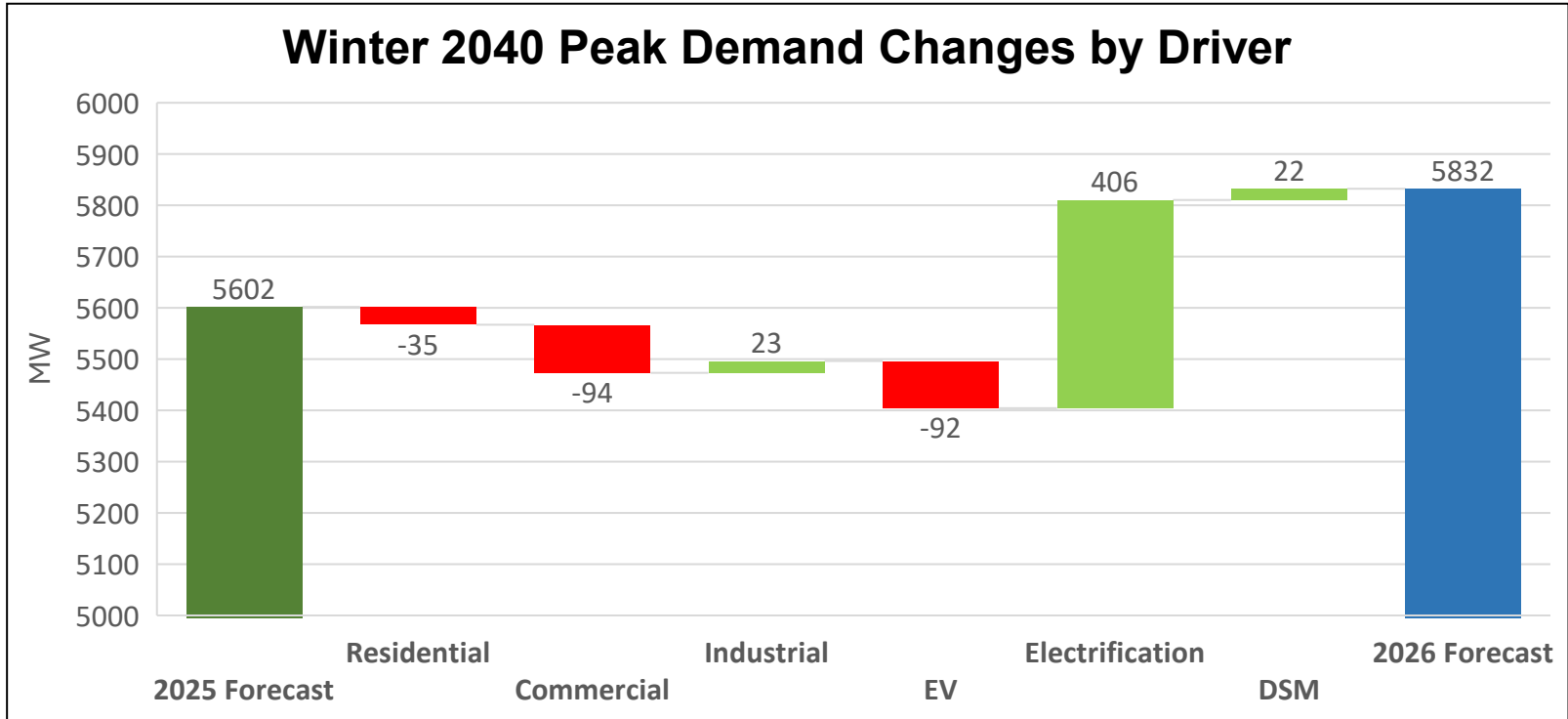


DESC 2026 IRP – Build Plans

Key Metrics	Driven By	Build Plan	Env Regs	Forced Retire 12/31/___ (Wat/Wil)	Fuel	CO2	Load Forecast	DSM
2026 Reference Build Plan	Statute; PSC Order	Core	Without GHG	32/34	Medium	\$0	Reference	Medium
High Fossil Fuel Prices Build Plan	Statute; PSC Order	Core	Without GHG	32/34	High	\$0	Reference	Medium
Medium Carbon Cost Build Plan	Statute; PSC Order	Core	Without GHG	32/34	Medium	Medium	Reference	Medium
Near-Term Load Growth Build Plan	PSC Order	Sensitivity	Without GHG	34/34	Low	\$0	High	Medium
Energy Conservation Build Plan	Stakeholder	Sensitivity	Without GHG	32/34	High	Medium	Low	Medium
Aggressive Regulation Build Plan	Statute	Sensitivity	Without GHG	34/34	High	High	High	Medium
High DSM Build Plan	Statute	Sensitivity	Without GHG	32/34	Medium	\$0	Reference	High
Low DSM Build Plan	Statute	Sensitivity	Without GHG	32/34	Medium	\$0	Reference	Low
Optimized Retirements – Reference Build Plan	PSC Order	Supplemental	Without GHG	N/A	Medium	\$0	Reference	Medium
Optimized Retirements - High Load Build Plan	PSC Order	Supplemental	Without GHG	N/A	Medium	\$0	High	Medium
Deep Decarbonization Build Plan	Climate Test	Supplemental	Without GHG	32/34	Medium	\$0	Reference	Medium
GHG Reference Build Plan	Statute; PSC Order	GHG Analysis	With GHG	32/32	Medium	\$0	Reference	Medium
GHG High Fossil Fuel Prices Build Plan	Statute; PSC Order	GHG Analysis	With GHG	32/32	High	\$0	Reference	Medium
GHG Medium Carbon Cost Build Plan	Statute; PSC Order	GHG Analysis	With GHG	32/32	Medium	Medium	Reference	Medium

DESC 2026 IRP

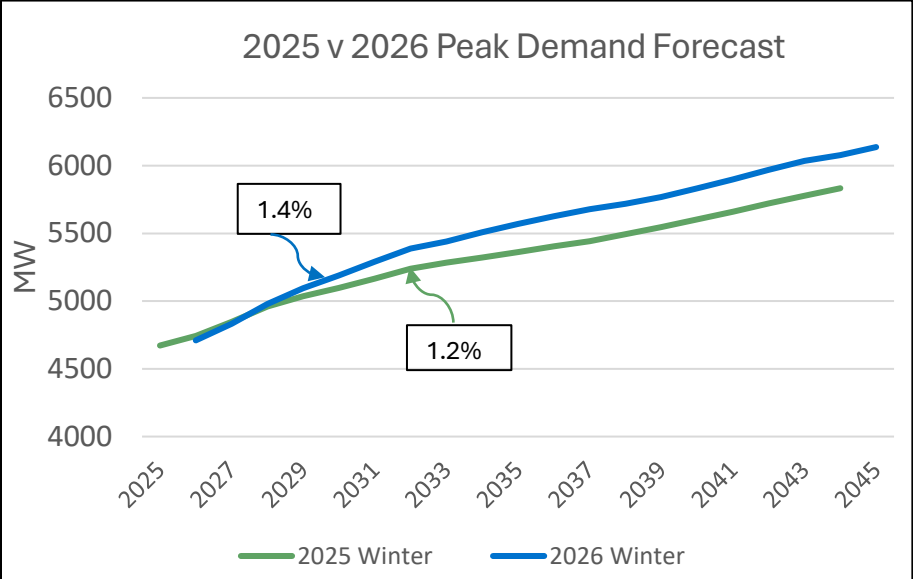
Load Forecast Drivers



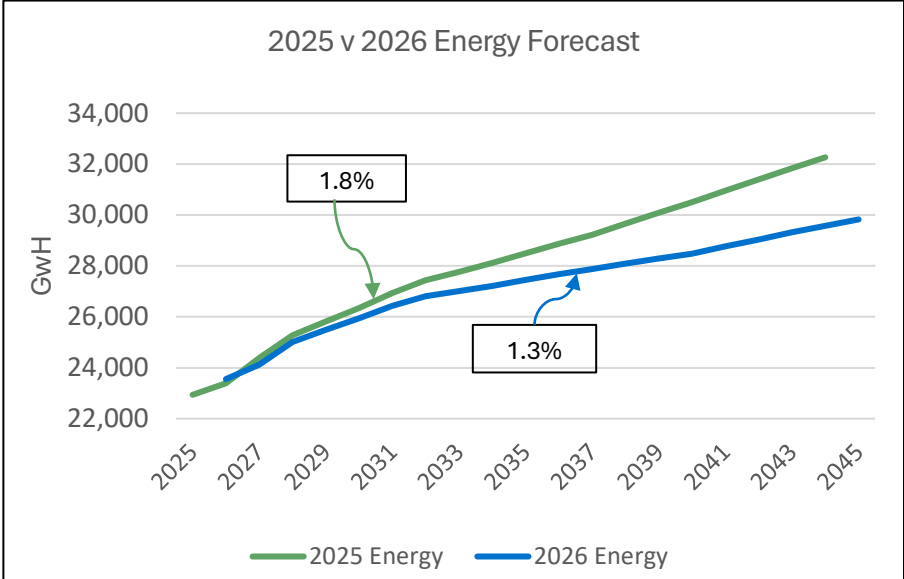
DESC Load Forecast

Peak Demand and Energy Forecast

Gross Winter Peak Forecast (MW)



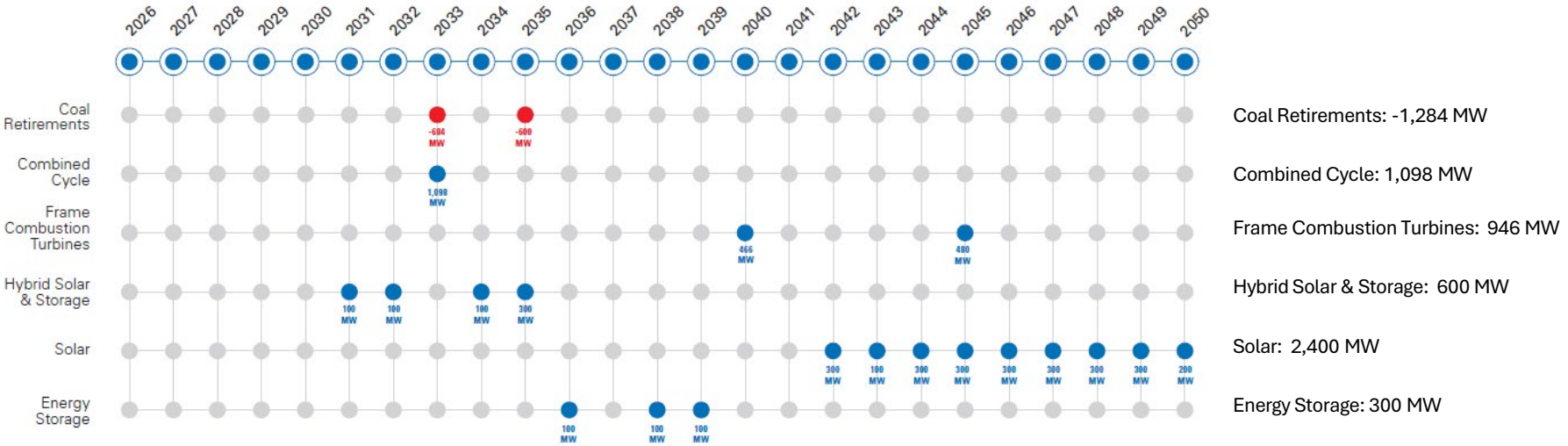
Energy Forecast (GWh)



Note: The Reference Forecast includes only known, contracted projects (i.e., it does not consider any uncommitted or speculative projects).

DESC 2026 IRP - 2026 Reference Build Plan

Preferred Plan – 2026 Reference Build Plan



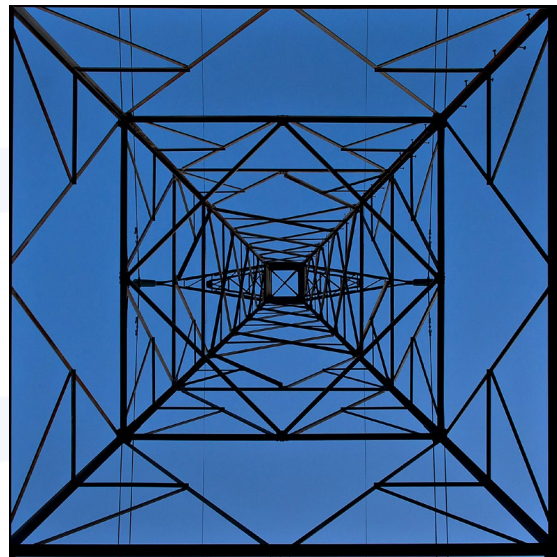
Questions?





**Dominion
Energy®**

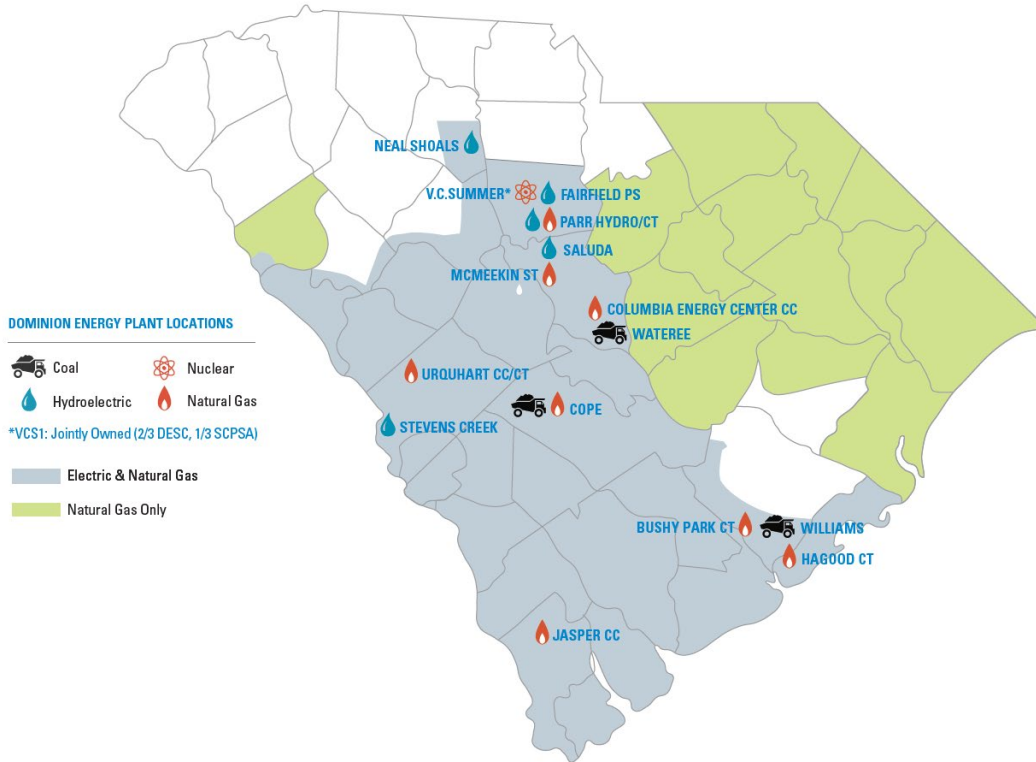
Break



System Reliability

Brandon Ashley
Vice President – Transmission & Delivery

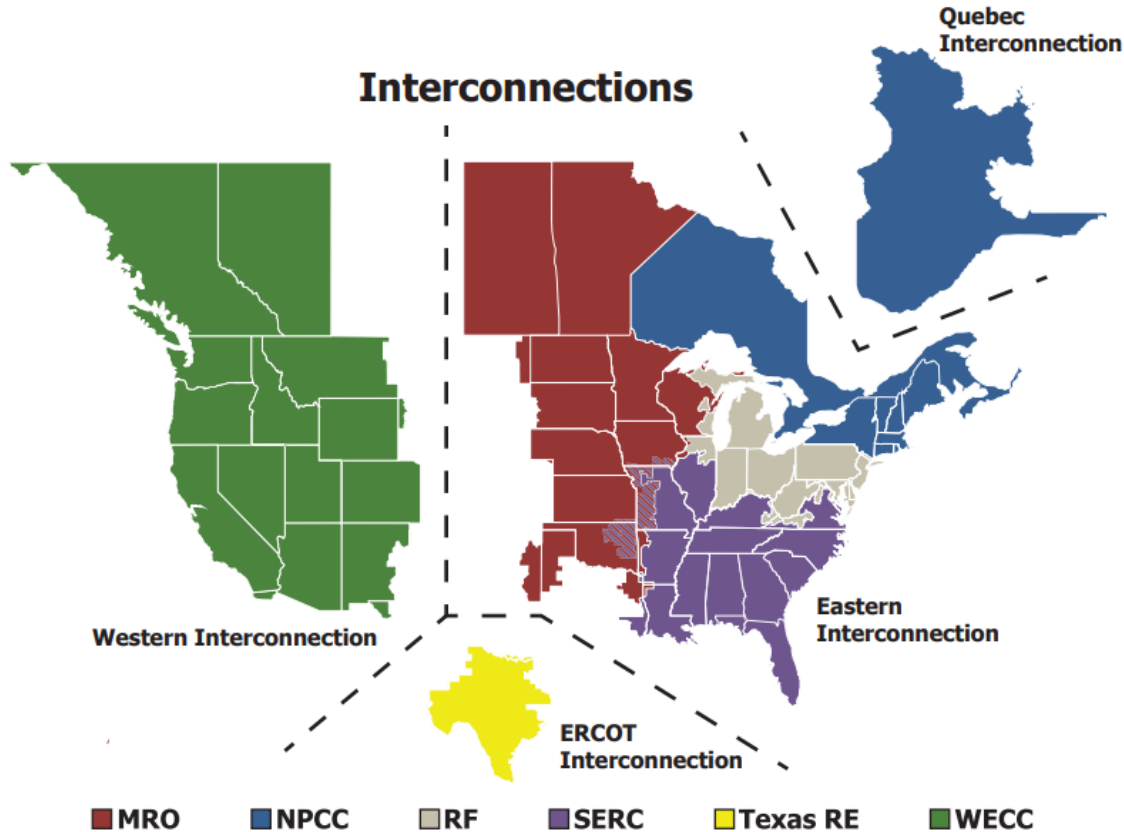
Where does our energy come from?



Total dispatchable generation 5604MW

- 1 jointly owned nuclear unit (653 MW)
- 4 coal units (415, 342, 342, 605 MW)
 - Had 12 in 2000
- 4 combined cycle units
 - Urquhart two 1-on-1 (456 MW)
 - CEC one 2-on-1 (519 MW)
 - Jasper one 3-on-1 (902 MW)
- 1 pumped storage (576 MW)
- 4 hydro facilities (208 MW)
- Various small CTs (239 MW)

Interconnections



- **FERC – Federal Energy Regulatory Commission**

Regulates interstate transmission of electricity, natural gas, and oil

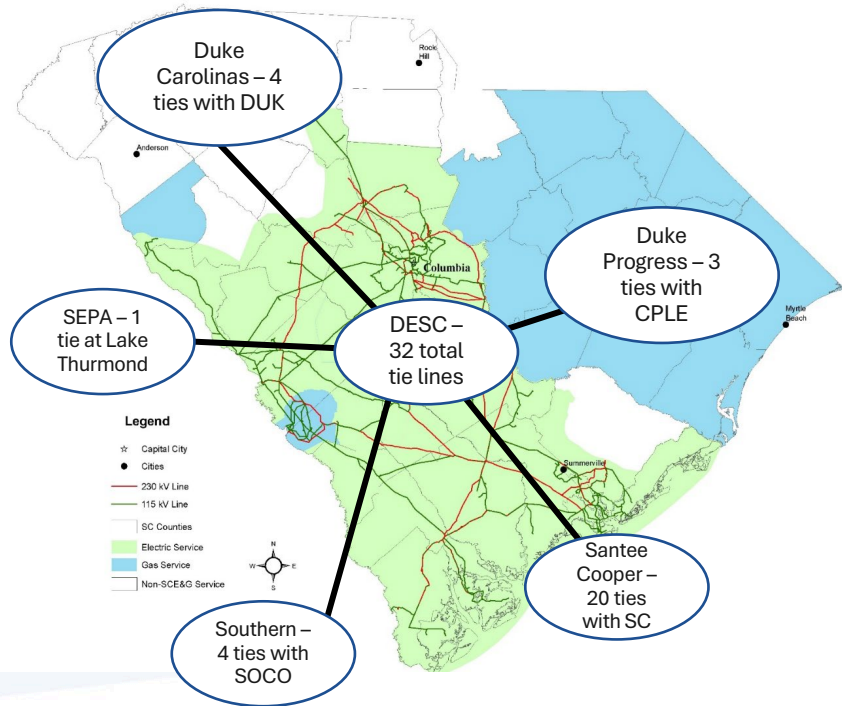
- **NERC – North American Electric Reliability Corporation**

Responsible for assuring the reliability and security of the bulk power system

- **SERC – Southeastern Electric Reliability Corporation**

Responsible for assessing and enforcing NERC Reliability Standards

Interconnections With Other Utilities



DESC is registered as a Balancing Authority with NERC

- Ensure grid stability
- Economic dispatch of generation fleet
- Optimize generation units to balance renewables

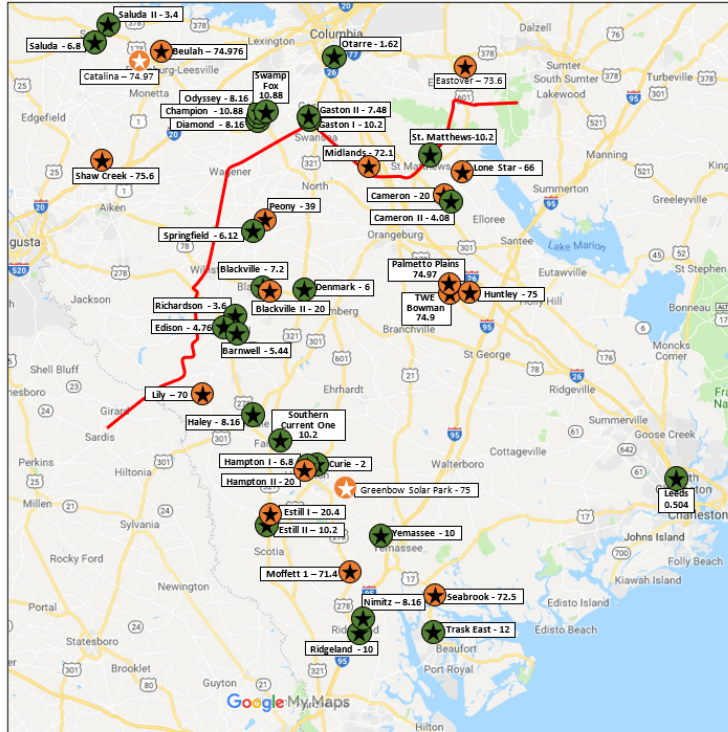
Service Territory

- 22,600 square miles
- 458 substations
- 3,827 pole miles of line (33-230kV) transmission
- 19,241 pole miles of distribution
- ~820,000 electric customers

DESC Solar Generation Summary

Solar Projects
IN-SERVICE and UNDER CONSTRUCTION

1-17-24

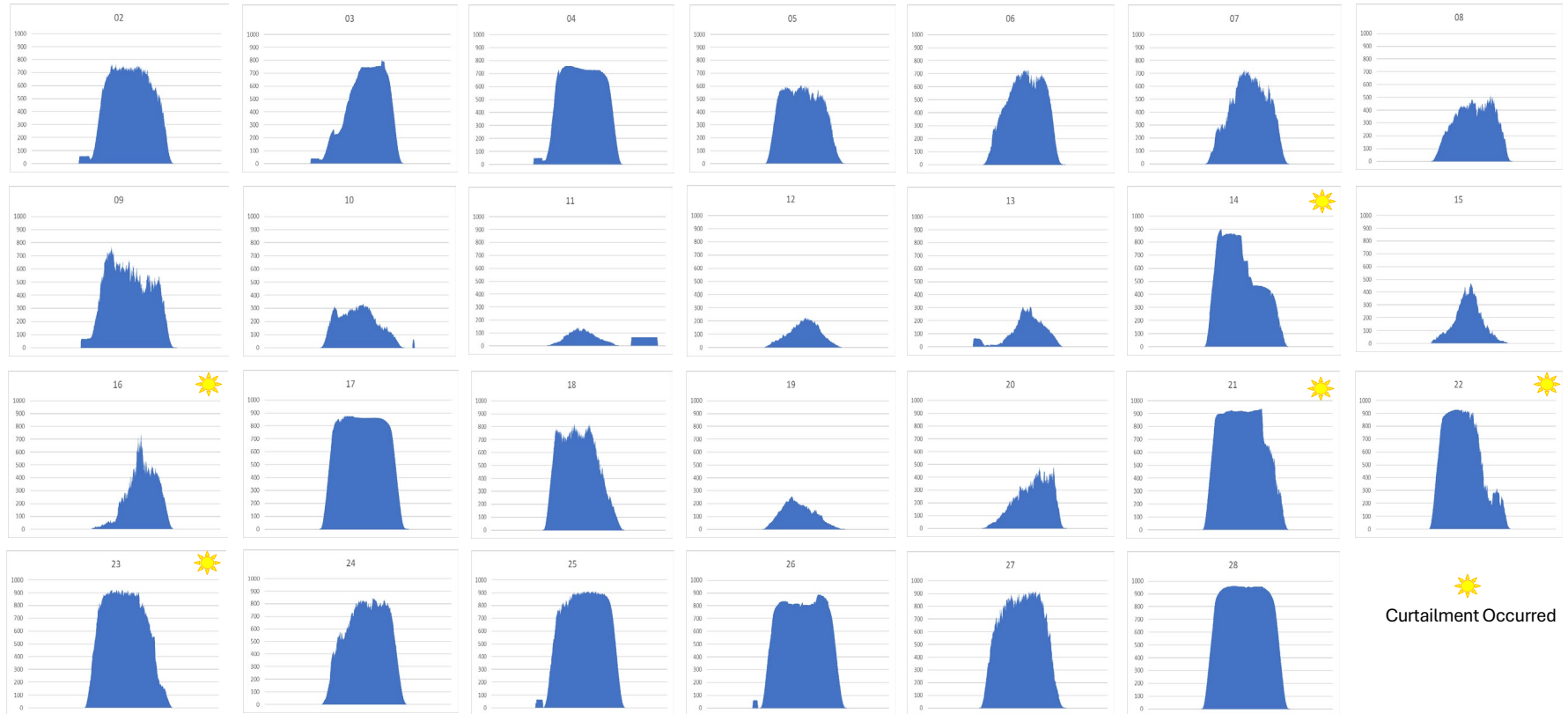


Utility Scale Solar in Service: 1,187 MW
Customer Scale (>20kW) Solar in Service: 52.4 MW

- 49.5% of the DESC BA Load (instantaneous) was served by solar on 4/8/2026
- Flexible, dispatchable generation needed to pair with solar

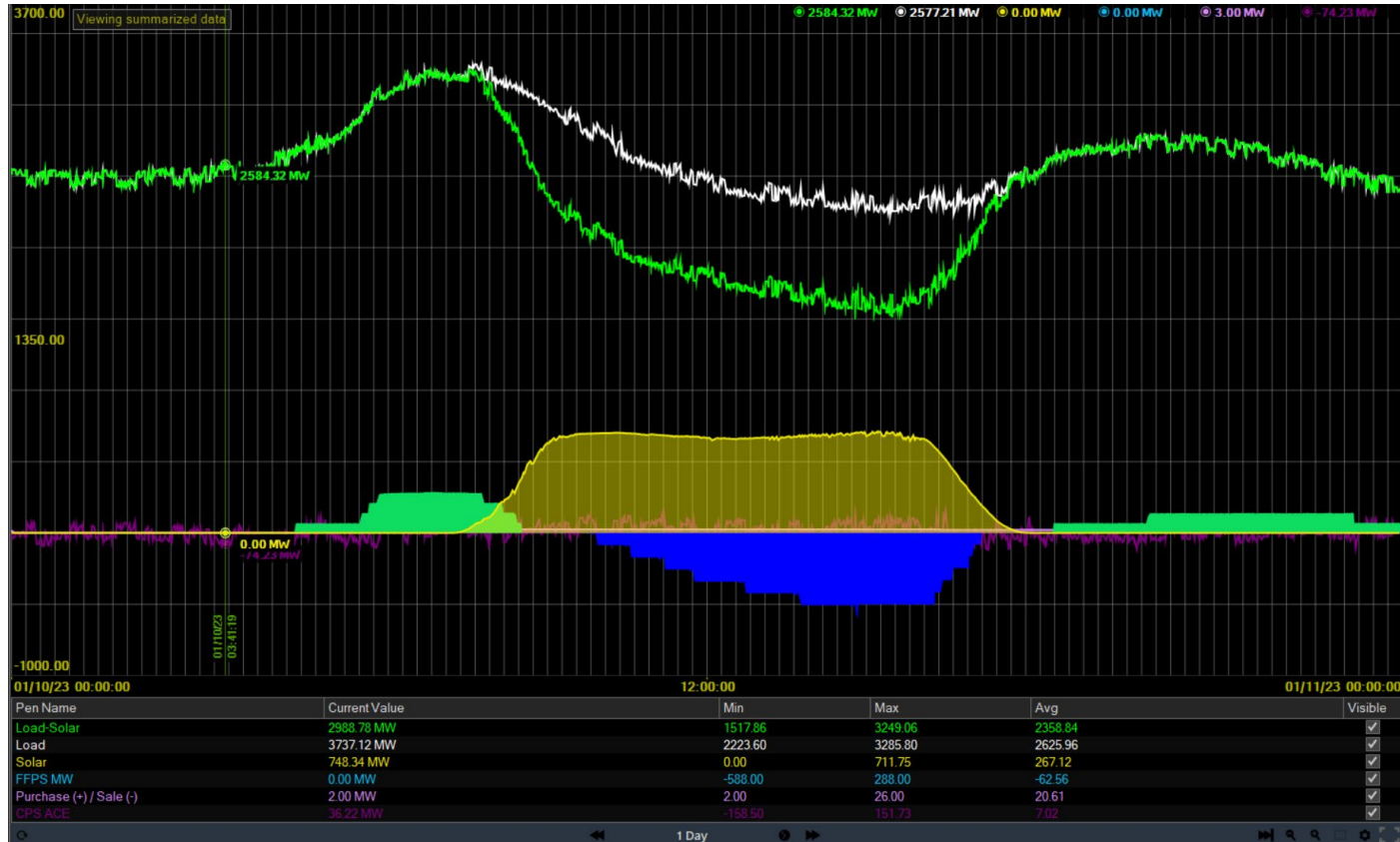
Actual Utility Scale Solar Production

February 2025



 Curtailment Occurred

Dispatchable Resource Ramping



Fairfield Pumped Storage



Fairfield Pumped Storage

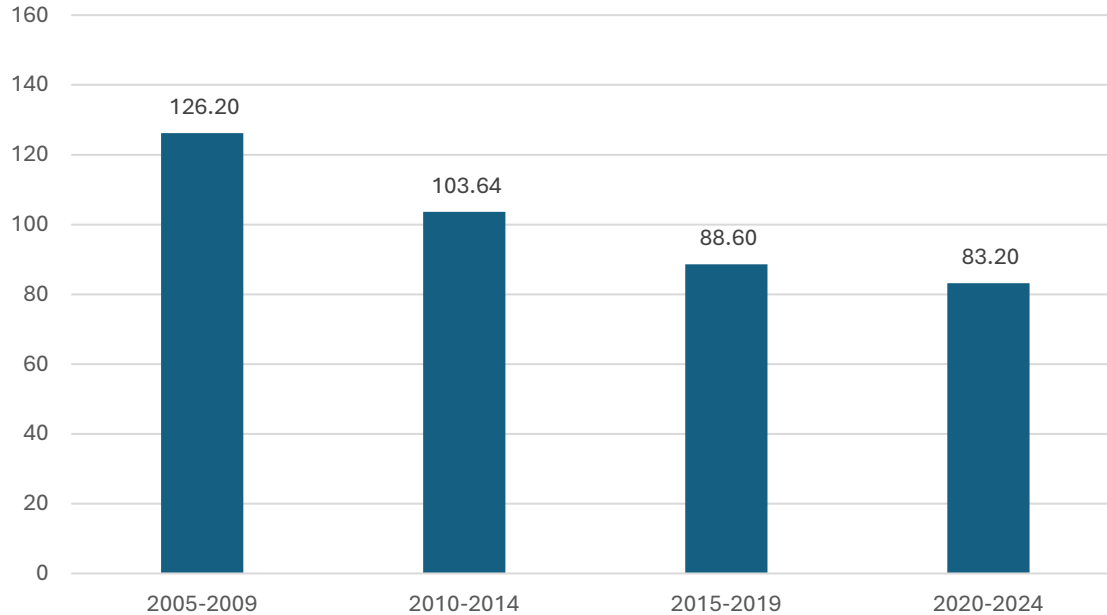
Jenkinsville, SC

576 MW, 1978



2025 System Reliability

SAIDI = System Average Interruption Duration Index



2025 SAIDI = 81.15 min

2025 Outage Causes

Where is the Majority of our SAIDI?

- 549 Vehicle related incidents (638 in 2024) – 6.5 minutes (8%)
- Weather has accounted for 31.8 minutes this year (39%)
- Vegetation has accounted for 15.82 minutes this year (19.5%)
- Total from those three = 54.12 minutes (66.7%)

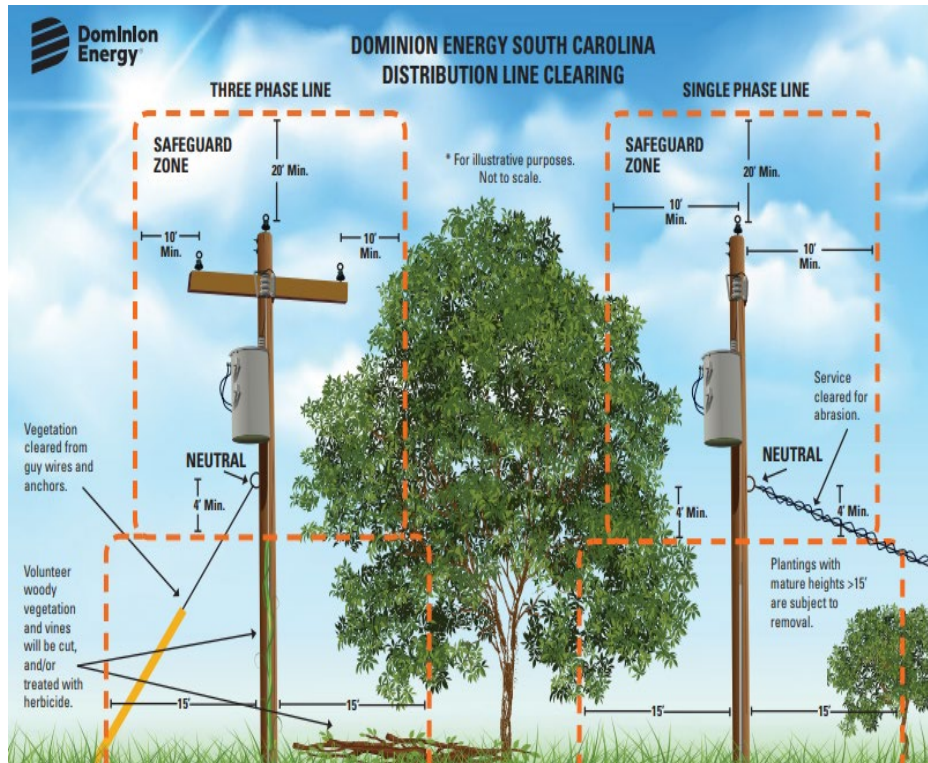
Other Outage Causes:

- 21 balloon outages
- 260 outside contractor/dig in events
- 41 snake outages
- 2,230 squirrel outages
- These events have added over 3.5 minutes to SAIDI in 2025



Vegetation Management

- **Right Tree, Right Place**
- A robust vegetation management program is vital to system performance during high wind and rain events.
- Maintaining rights-of-way through cyclical tree trimming and selective herbicide application helps reduce the impacts of severe weather events and enhances safety and access during the restoration process.



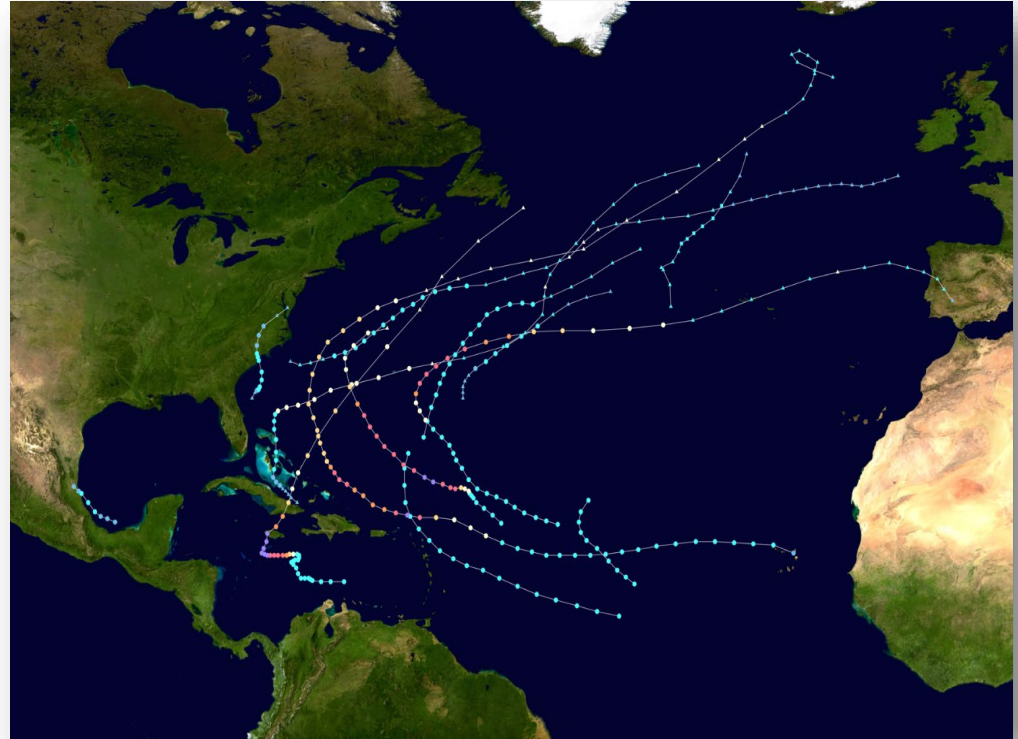
System Reliability & Resiliency

- Transmission & Distribution System Planning
- Circuit Inspection & Correction
- Circuit Coordination
- Capital replacement projects
- End-of-life & grid hardening
- Replacement of guyed wood structures with self-supporting steel on the transmission system
- Deployment of advanced technology
 - AMI
 - SCADA/Fault sensors
 - ADMS & OMS
 - Energy Analyzer
- Emergency response preparation



2025 Season Review

	Average	Forecast	Actual
Named Storms	14.4	17	13
Hurricanes	7.2	9	5
Major Hurricanes	3.2	4	4
ACE Index	132	155	133



2026 Season Forecast

Seasonal Forecasts:

Average:	14.4	7.2	3.2	123
Year	Tropical Storms	Hurricanes	Major Hurricanes	* ACE
2026	13	6	2	90
2025	17 (13)	9 (5)	4 (4)	155 (132.6)
2024	18 (23)	11 (11)	5 (5)	162 (161.6)
2023	20 (13)	7 (6)	3 (2)	145.6 (148.2)
2022	14 (19)	8 (9)	2 (4)	95.1 (94.6)
2021	21 (17)	7 (8)	4 (4)	145.6
2020	30	13	6	180.4
2019	18	6	3	132.2
2018	15	8	2	132.6
2017	17	10	6	224.9
2016	15	7	4	141.3
2015	11	4	2	62.7
2014	8	6	2	66.7
2013	14	2	0	36.1
2012	19	10	2	132.6
2011	19	7	4	126.3
2010	19	12	5	165.5
2009	9	3	2	52.6
2008	16	8	5	145.7
2007	15	6	2	73.9
2006	10	5	2	83.3
2005	28	15	7	245.3
2004	15	9	6	226.9
2003	16	7	3	176.3
2002	12	4	2	67.4
2001	15	9	4	110.1

First Storm:

Year	Date	Name
2026		Arthur
2025	June 19	Andrea
2024	June 19	Alberto
2023	June 1	Arlene
2022	June 5	Alex
2021	May 22	Ana
2020	May 16	Arthur
2019	May 20	Andrea
2018	May 25	Alberto
2017	April 19	Arlene
2016	January 13	Hurricane Alex
2015	May 7	Ana
2014	June 30	Hurricane Arthur
2013	June 5	Andrea
2012	May 19	Alberto
2011	June 28	Arlene
2010	June 25	Hurricane Alex
2009	August 11	Ana
2008	May 31	Arthur
2007	May 9	Andrea
2006	June 10	Alberto
2005	June 8	Arlene
2004	July 31	Hurricane Alex
2003	April 20	Ana
2002	July 14	Arthur
2001	June 5	Allison

* ACE = Accumulated Cyclone Energy

Questions?



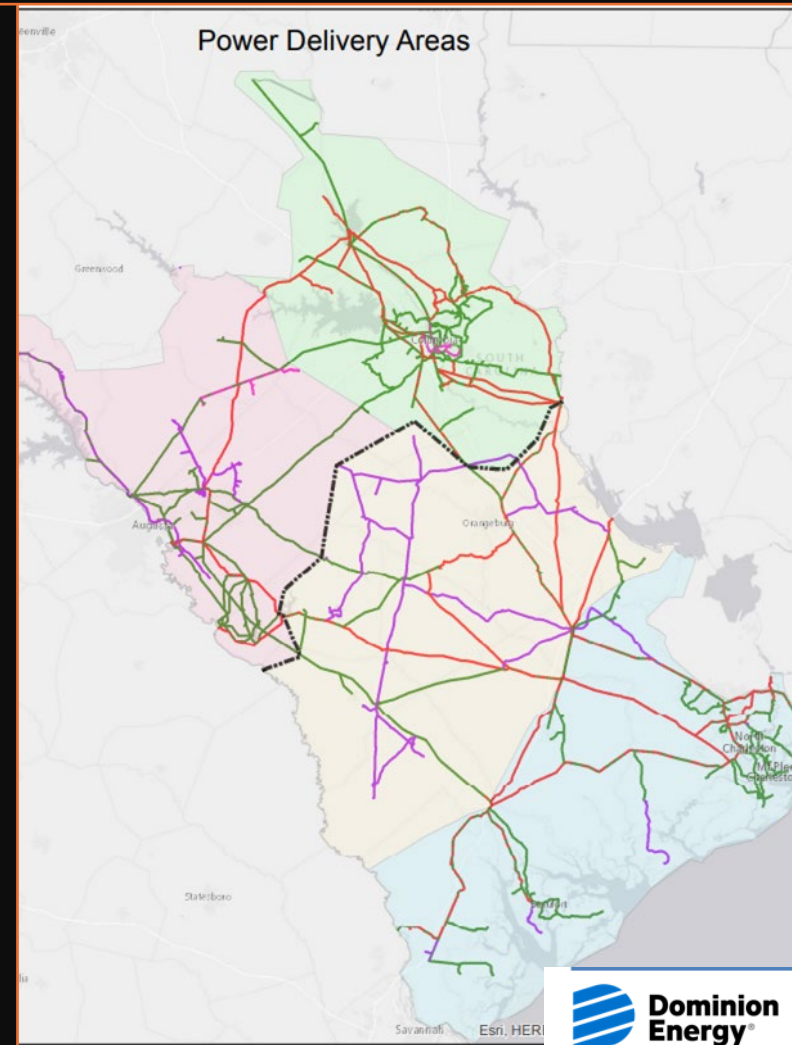


DESC Electric Transmission Construction Projects

- Electric Transmission System
- Electric Transmission Lines
- Construction Projects
 - Engineering
 - Procurement
 - Construction

Kelvin Rogers
General Manager – Electric Transmission & Construction

Electric Transmission System



Electric Transmission Lines

- ~4,000 Miles System Wide
 - 1,400 - 230 kV
 - 2,000 - 115 kV
 - 475 - 46 kV
 - 45 - 33 kV
 - Averaging approximately 80 –100 miles of new/rebuilt transmission per year
 - Dating back to 2012, have rebuilt 40% of the 230 kV and 115 kV system
-





Construction Projects

Reliability/Contingency:

- System Improvement Projects

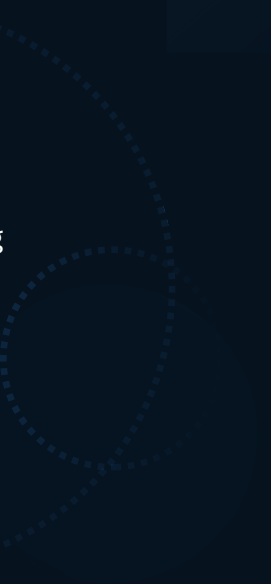
Load Growth Projects

- System Operating Limit Projects
- New Customer Substation
- Customer Substation Expansion

Engineering

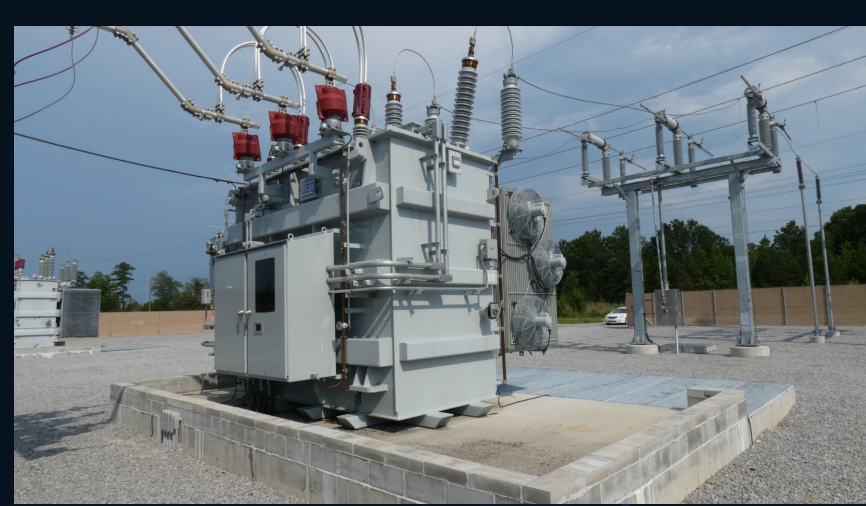


- Substation Site Location
- Transmission System Upgrades
- Transmission Line Tap or Fold-in
- New Transmission Line Right-of-Way
- 230kV – PSC Approval
- Permits
 - Stormwater
 - US Army Corp of Engineers
- Easement, and Access
- Soil Borings
- Substation - Civil, Structural, Electrical Engineering
- Transmission Line Design –
 - Drilled Pier Foundations
 - Vibratory Caissons
 - Direct Embed
- Survey
- Affected Property Owner Communications



Procurement

- Equipment Lead Time:
 - Transformers – 3 years
 - 115kV/230kV Breakers - 3 years
 - Circuit Switchers – 2.5 years
- Equipment Costs:
 - Increase of 200% over the past 5 years



Construction

- Constructability
 - System Outages
 - Plant Outages
- Access
- Drilled Pier Foundations
- Caissons



Construction

- Crews:
 - Availability
 - DESC/Contractor
- Substation/Transmission Inspectors





Construction

Environmental Compliance

- US Army Corp of Engineering
- DNR - Endangered Species Management Plans
- SWPPP Weekly Inspections
 - Silt Fences
 - Access/Matting



Project Completion

- Energize Transmission lines and Phase-out
- Energize Substation and Transformers
 - System Protection Checkout
- Stabilization – DES Notice of Termination





Questions

Dominion Energy South Carolina, Inc.

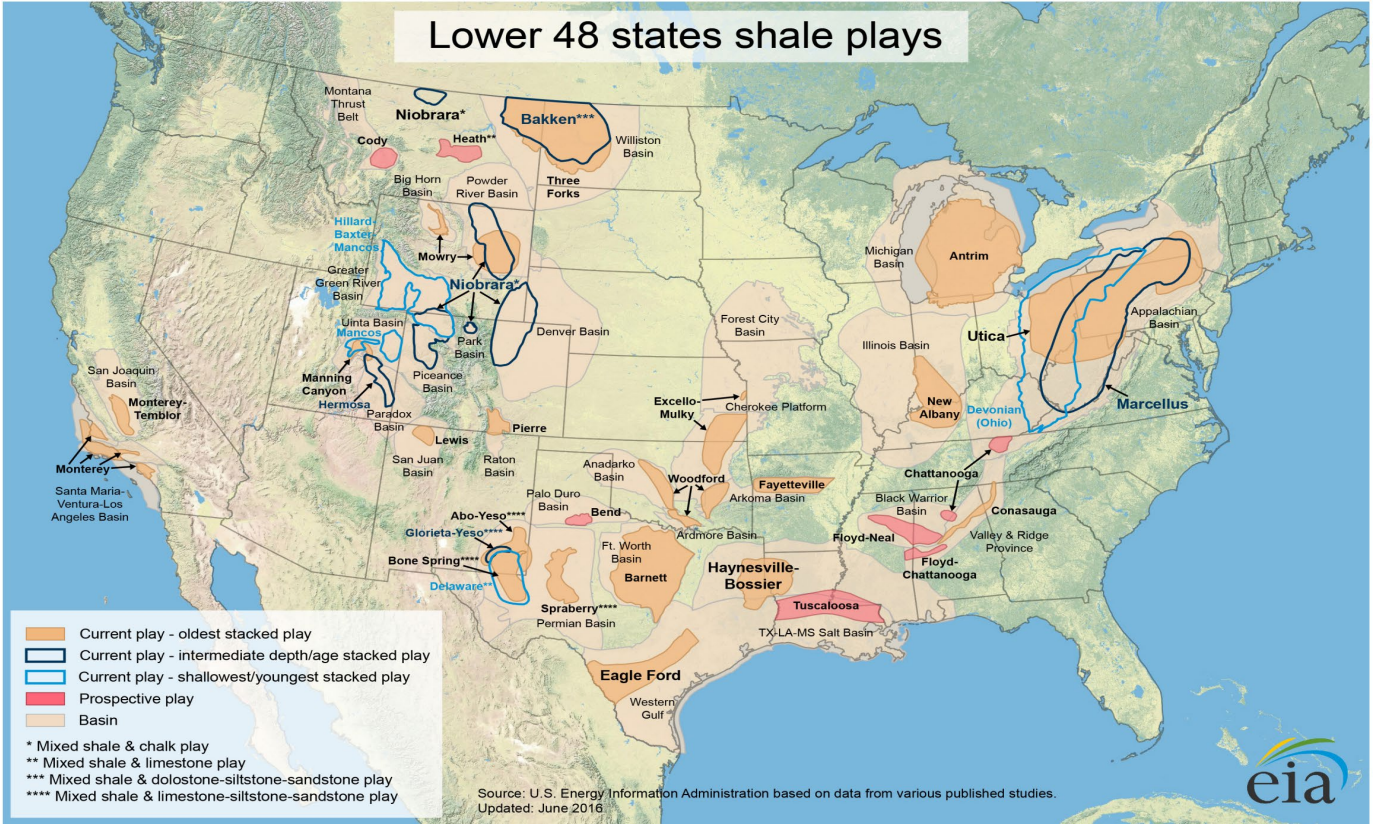
Gas Supply Update

John Beier
Manager – Gas Supply

Topics

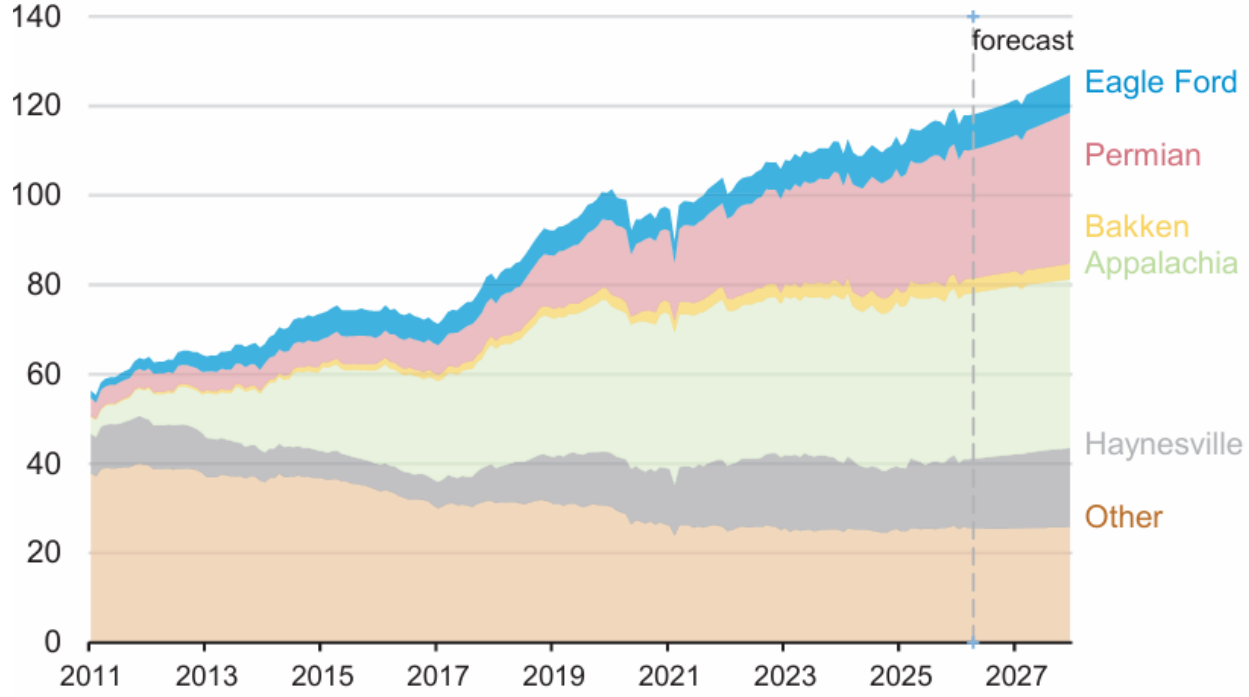
- ▶ Market Fundamentals
 - Supply & Demand
 - Storage
 - Prices
 - Weather
- ▶ Interstate Pipeline Projects

U.S. Natural Gas Production-Map



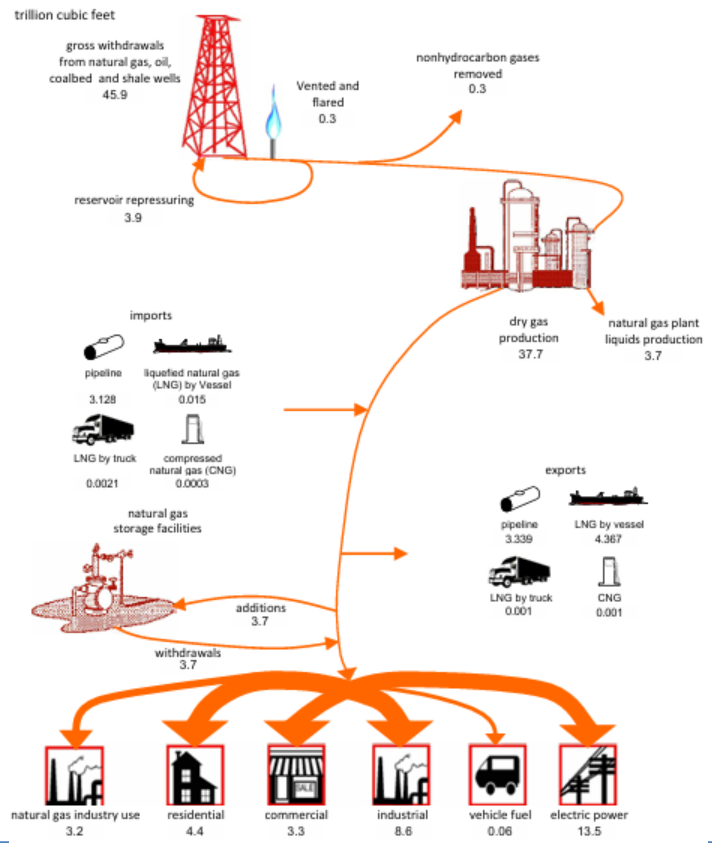
U.S. Natural Gas Production

Monthly Lower 48 natural gas production by region
billion cubic feet per day



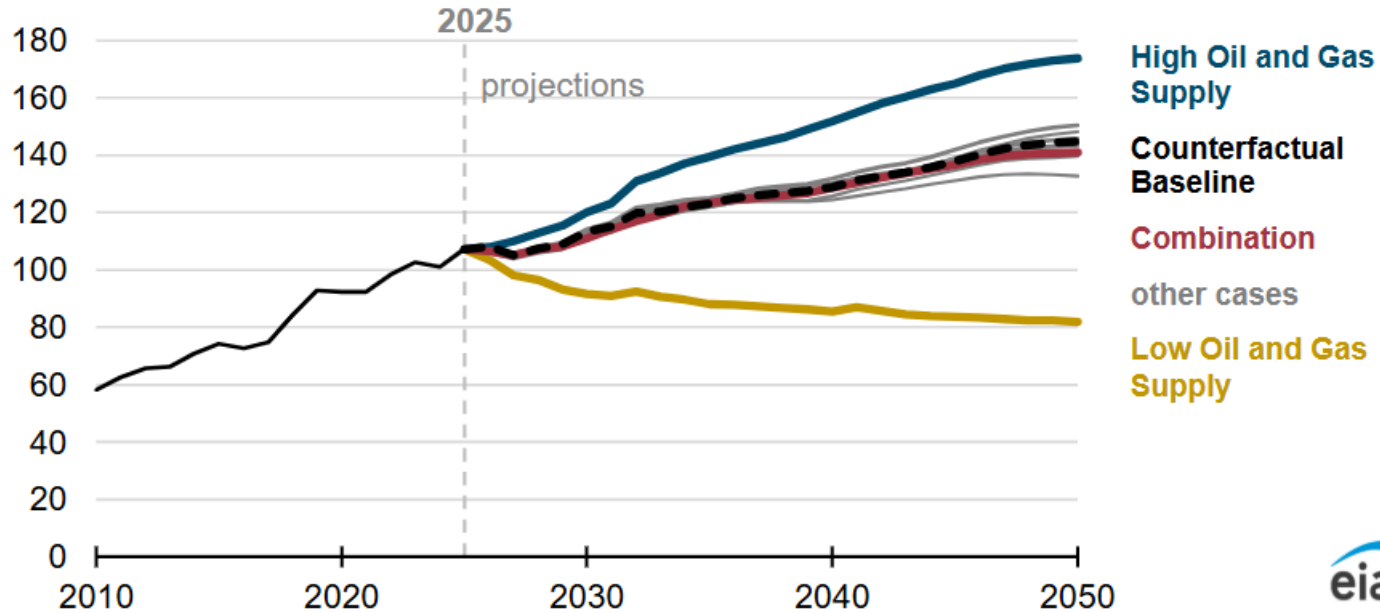
Data source: U.S. Energy Information Administration, Short-Term Energy Outlook, May 2026

Natural Gas Supply & Disposition (2024)



Natural Gas Production

U.S. dry natural gas production
billion cubic feet per day



Data source: U.S. Energy Information Administration, *Annual Energy Outlook 2026*, April 2026

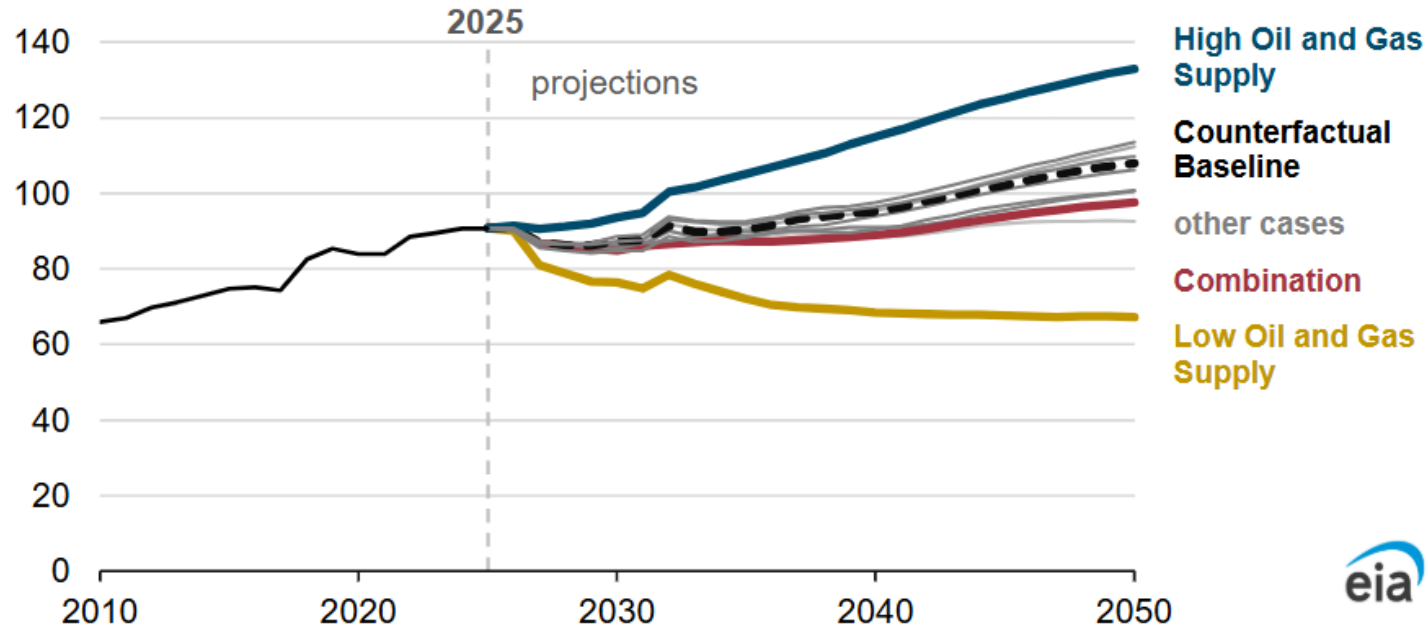
Note: Combination case assumes repeal of U.S. Environmental Protection Agency (EPA) 111 rule and greenhouse gas tailpipe emissions rule.



presented w/expressed AGA consent

Natural Gas Consumption

U.S. natural gas consumption
billion cubic feet per day



Data source: U.S. Energy Information Administration, *Annual Energy Outlook 2026*, April 2026

Note: Combination case assumes repeal of U.S. Environmental Protection Agency (EPA) 111 rule and greenhouse gas tailpipe emissions rule.

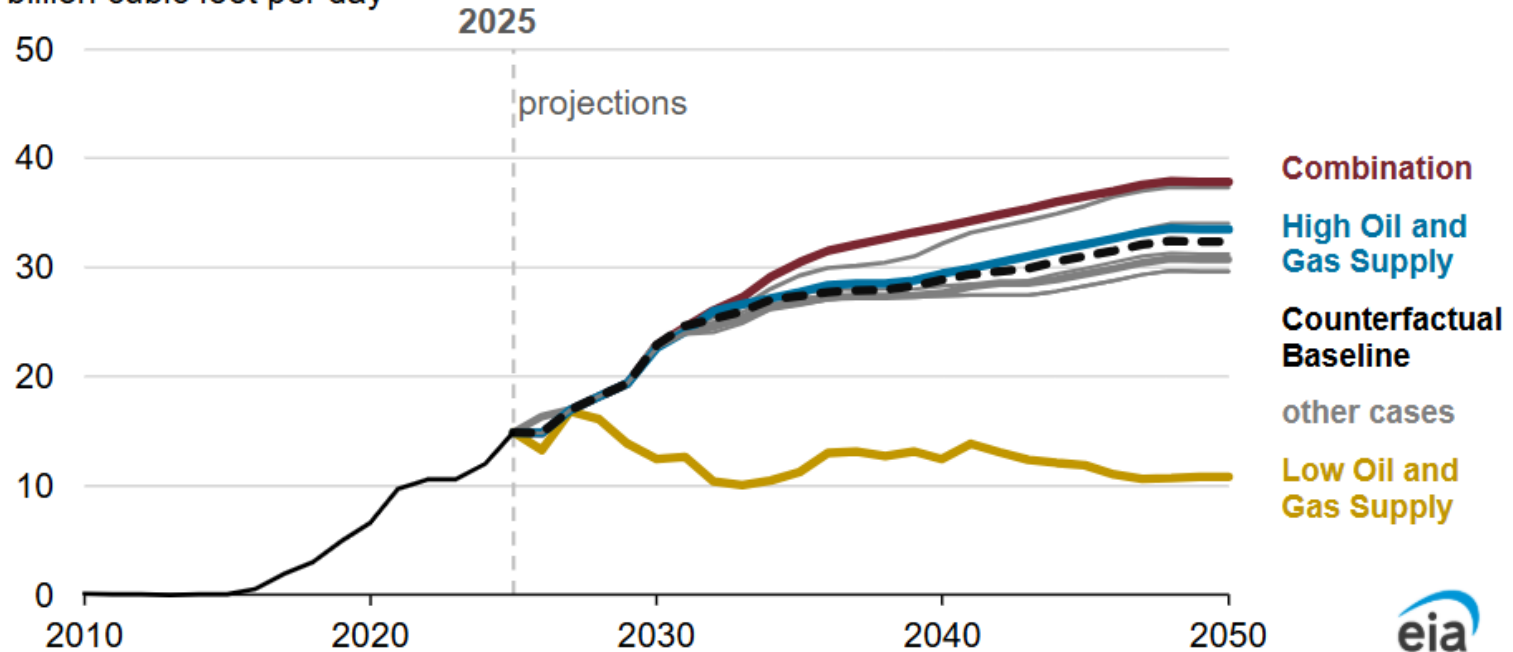


presented w/expressed AGA consent

Natural Gas Exports

U.S. liquefied natural gas exports

billion cubic feet per day

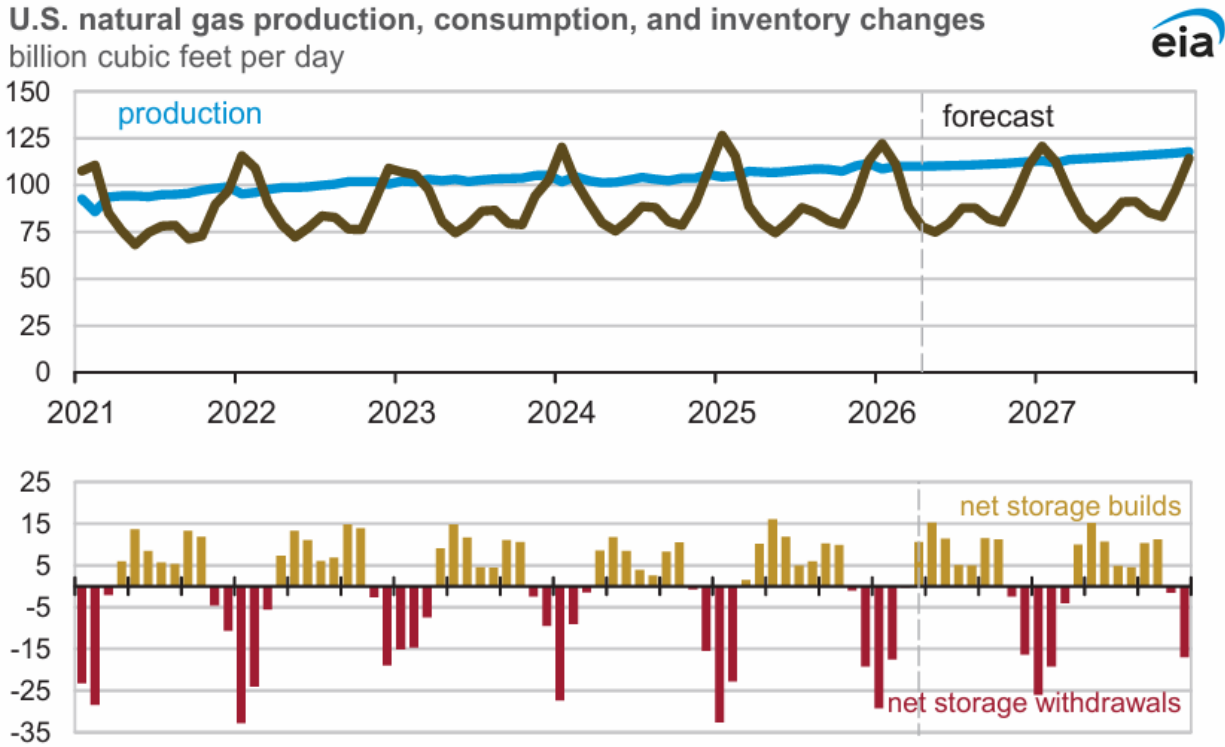


Data source: U.S. Energy Information Administration, *Annual Energy Outlook 2026*, April 2026

Note: Combination case assumes repeal of U.S. Environmental Protection Agency (EPA) 111 rule and greenhouse gas tailpipe emissions rule.

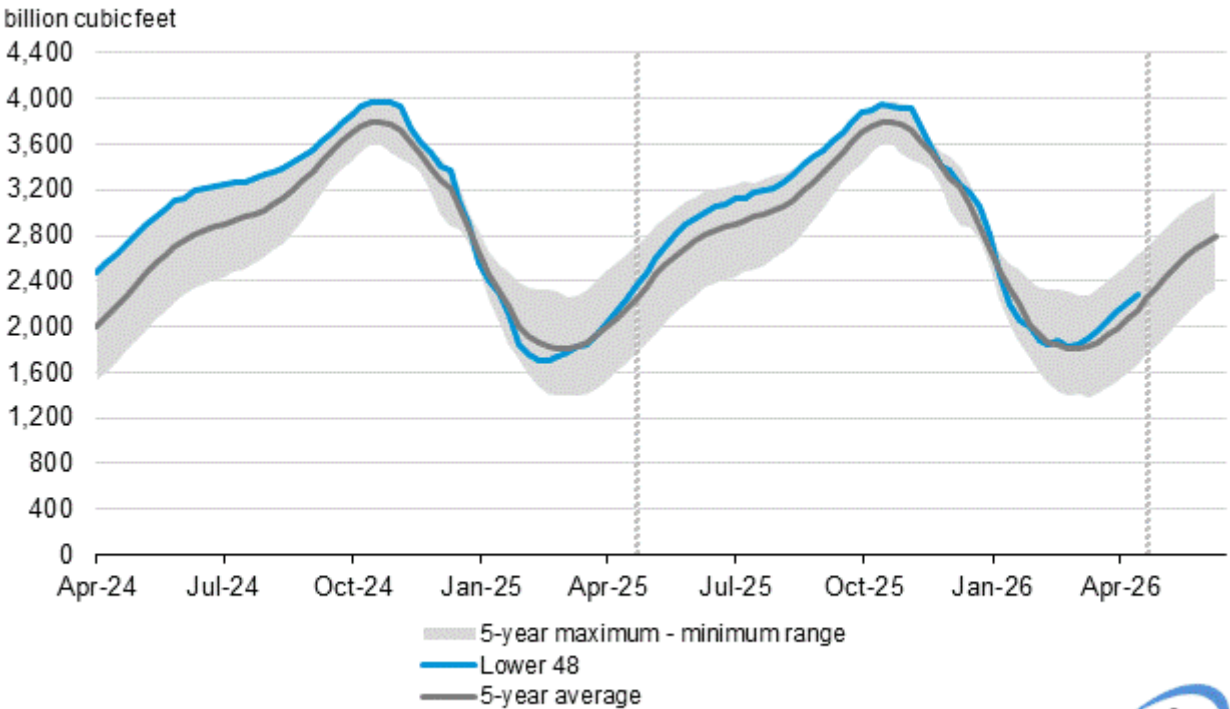
presented w/expressed AGA consent

U.S. Production, Consumption and Inventory Changes



Data source: U.S. Energy Information Administration, Short-Term Energy Outlook, May 2026

U.S. Natural Gas Storage

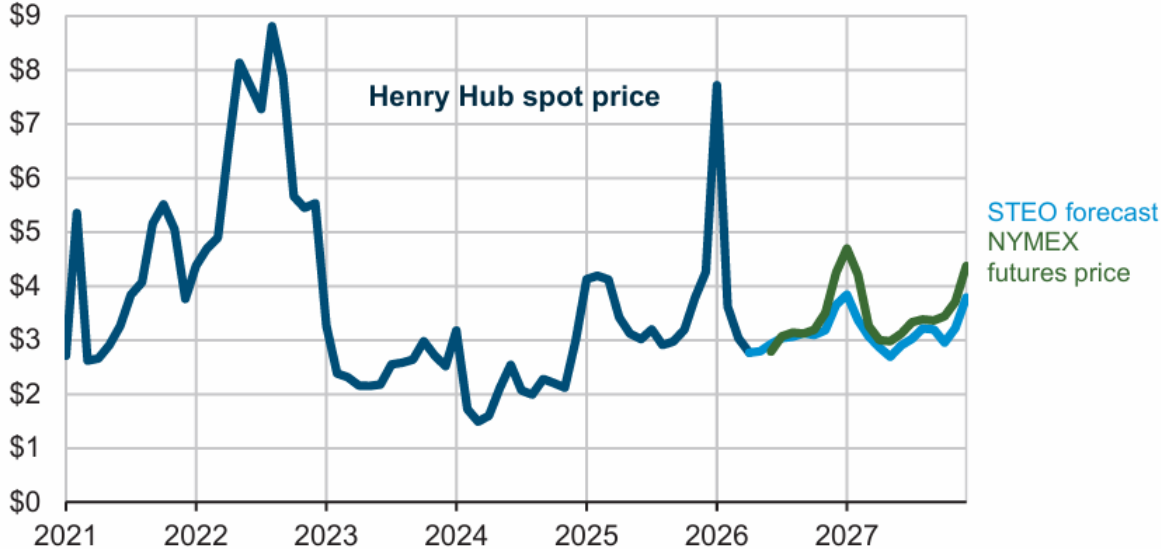


Data source: U.S. Energy Information Administration



Henry Hub Prices

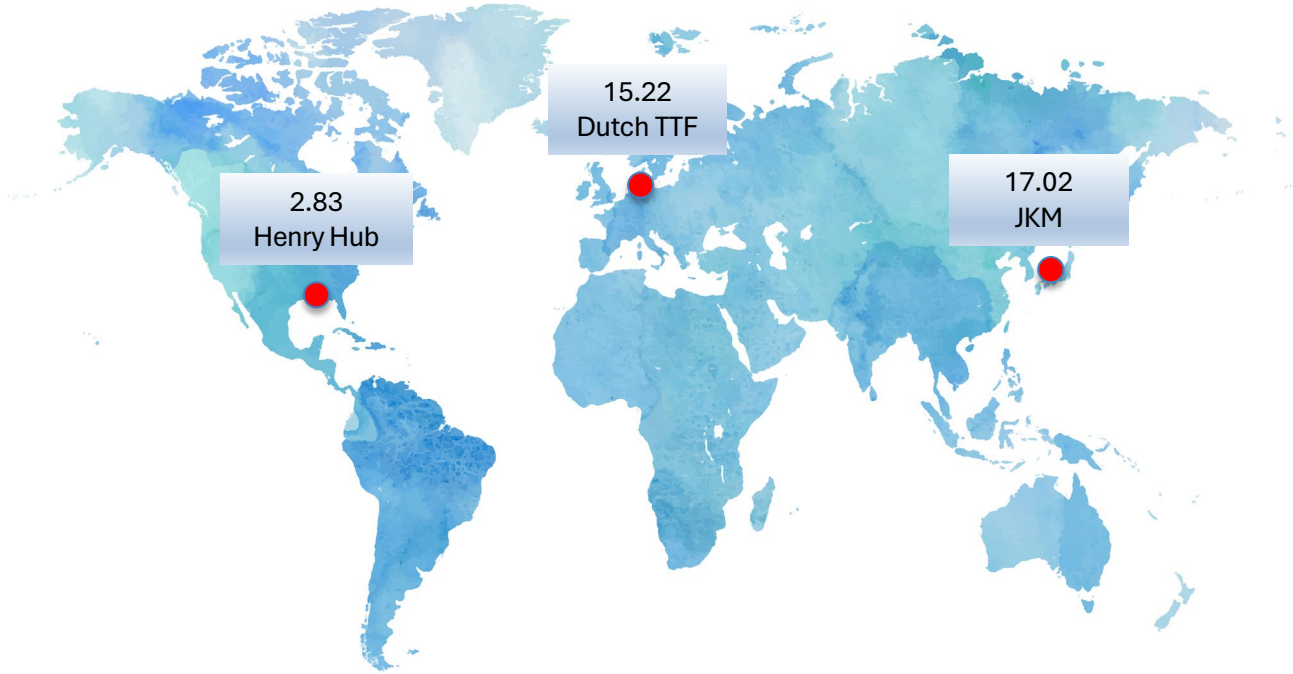
Henry Hub natural gas price and NYMEX futures price
dollars per million British thermal units



Data source: U.S. Energy Information Administration, Short-Term Energy Outlook, May 2026, Bloomberg L.P., and LSEG Data

Note: Futures curve is the average settlement price for five trading days ending May 7, 2026.

Global Natural Gas Prices (\$/mmbtu)

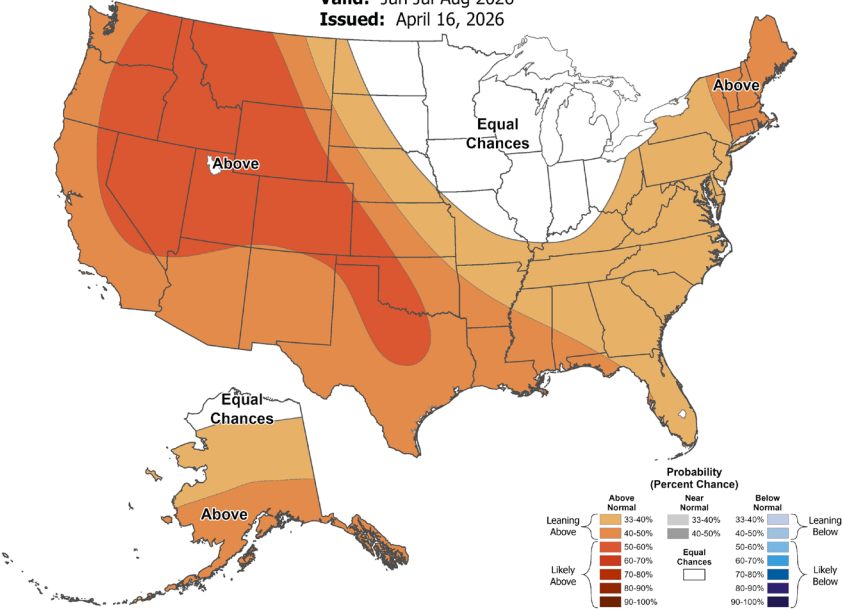


Summer Weather Forecast



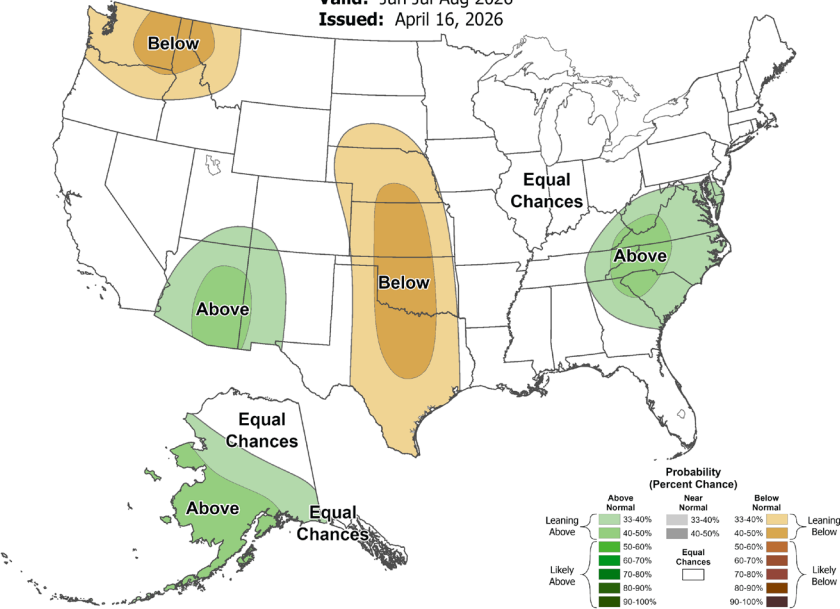
Seasonal Temperature Outlook

Valid: Jun-Jul-Aug 2026
 Issued: April 16, 2026



Seasonal Precipitation Outlook

Valid: Jun-Jul-Aug 2026
 Issued: April 16, 2026

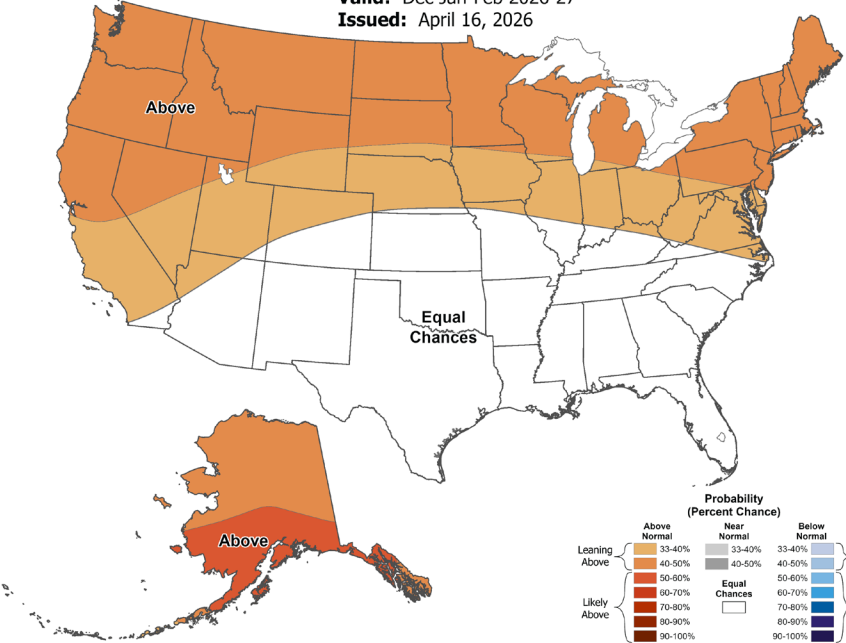


Winter Weather Forecast



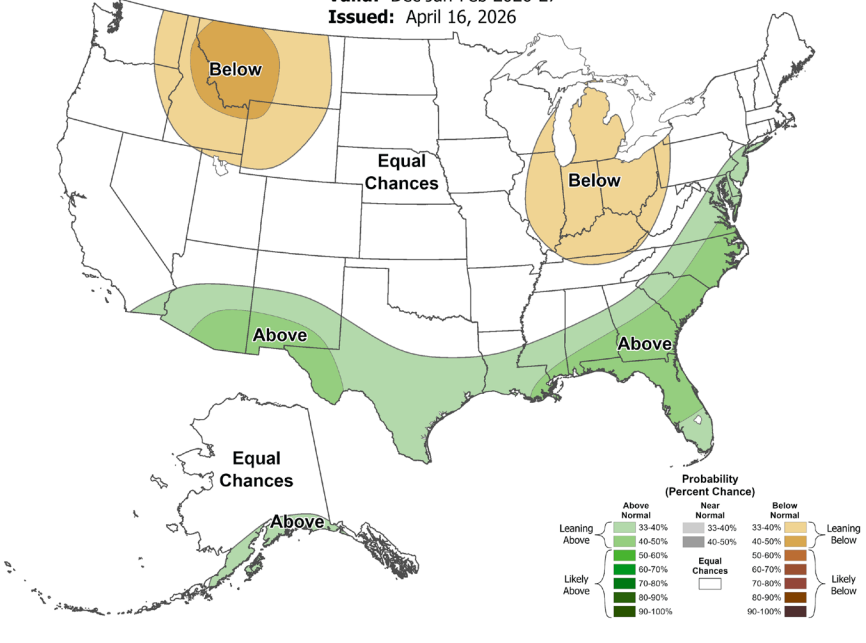
Seasonal Temperature Outlook

Valid: Dec-Jan-Feb 2026-27
Issued: April 16, 2026



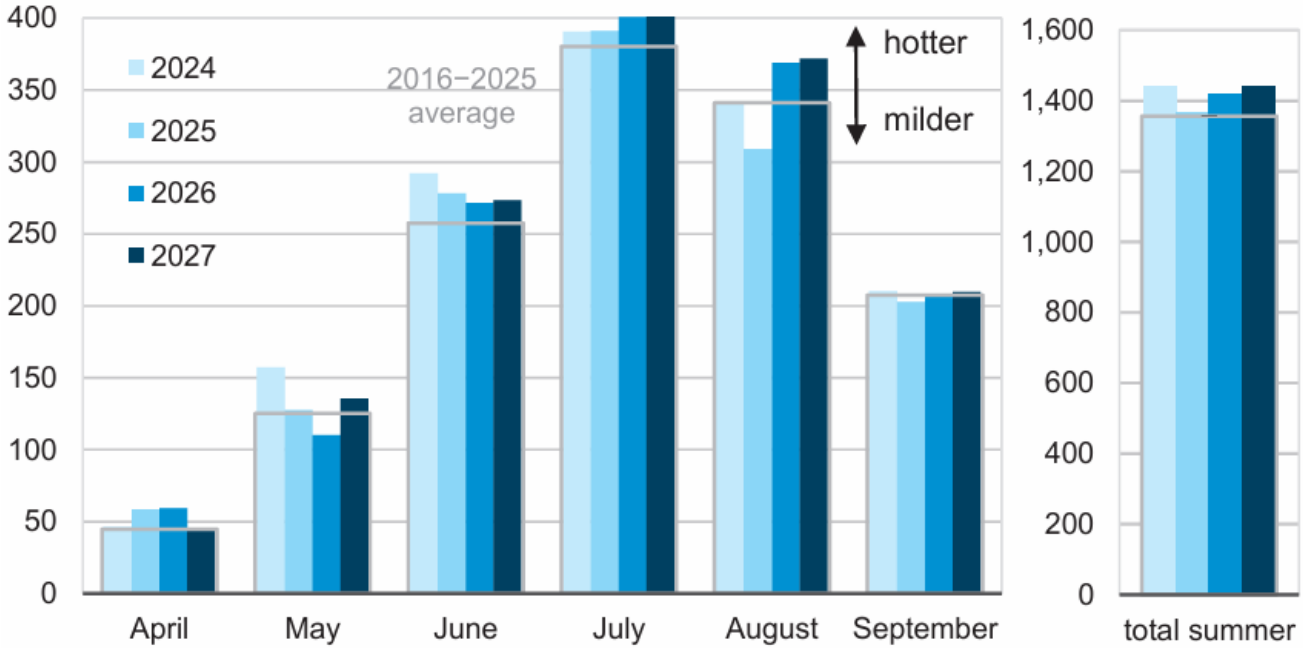
Seasonal Precipitation Outlook

Valid: Dec-Jan-Feb 2026-27
Issued: April 16, 2026



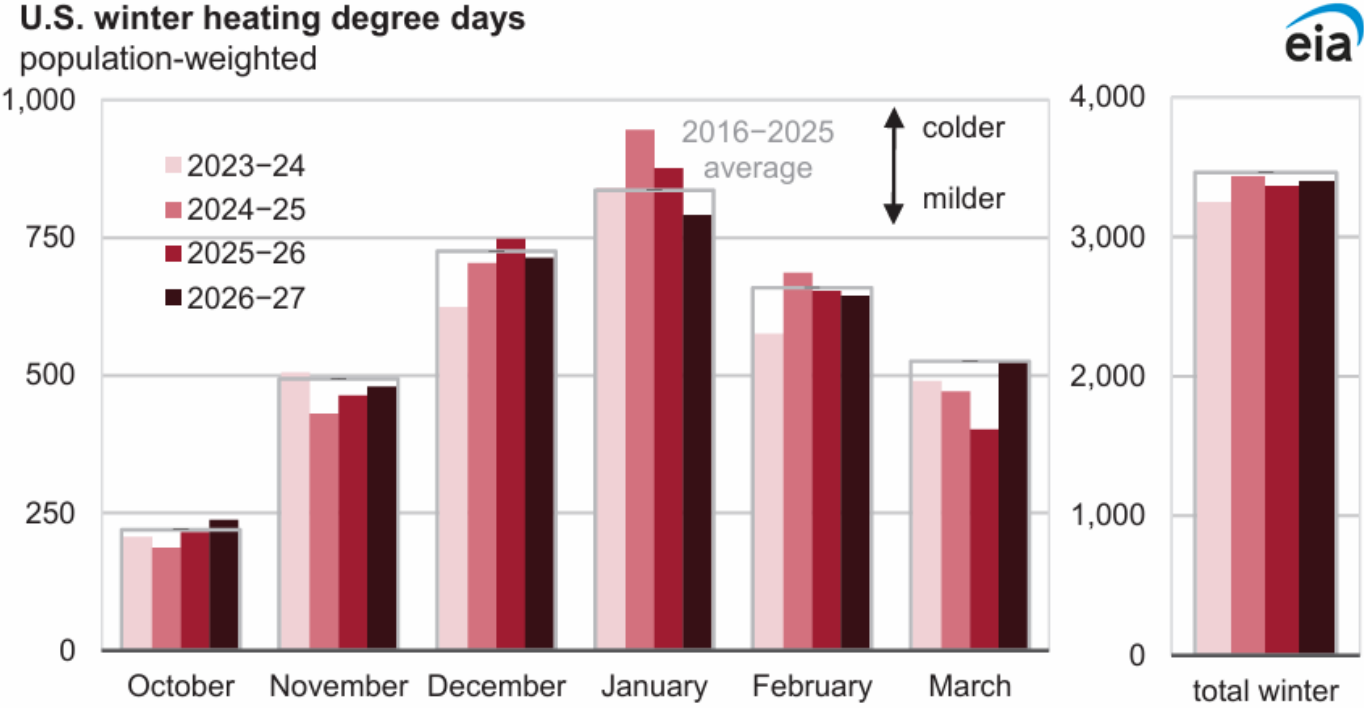
Summer Cooling Degree Days

U.S. summer cooling degree days
population-weighted



Data source: U.S. Energy Information Administration, Short-Term Energy Outlook, May 2026
 Note: EIA calculations based on National Oceanic and Atmospheric Administration (NOAA)

Heating Degree Days



Data source: U.S. Energy Information Administration, Short-Term Energy Outlook, May 2026

Note: EIA calculations based on National Oceanic and Atmospheric Administration (NOAA) data.

Topics

- ▶ Market Fundamentals
 - Supply & Demand
 - Storage
 - Prices
 - Weather
- ▶ Interstate Pipeline Projects

Interstate Pipeline Projects – Kinder-SNG, TN, & EE

- Southern Natural Gas South System Expansion 4 (SSE4)
 - 1.3 MMDth/d capacity increase
 - 291 miles pipeline looping
 - 239,650 ISO HP increase
 - \$3.5 B investment
 - In-service: 11/2028 (P1); 11/2029 (P2)
- Tennessee Gas Pipeline MS Crossing (MSX)
 - 2.1 MMDth/d capacity increase
 - 199 miles pipeline
 - 182,970 ISO HP increase
 - \$1.7 B investment
 - In-service 11/2028
- Elba Express Bridge Project
 - 325 MDth/d lateral into SC
 - 71 miles of 30" pipe
 - No compression
 - \$431 M investment
 - In-Service 6/2030



Interstate Pipeline Projects-Williams-Transco

Executing on ~2.3 Bcf/d of Transco Expansions

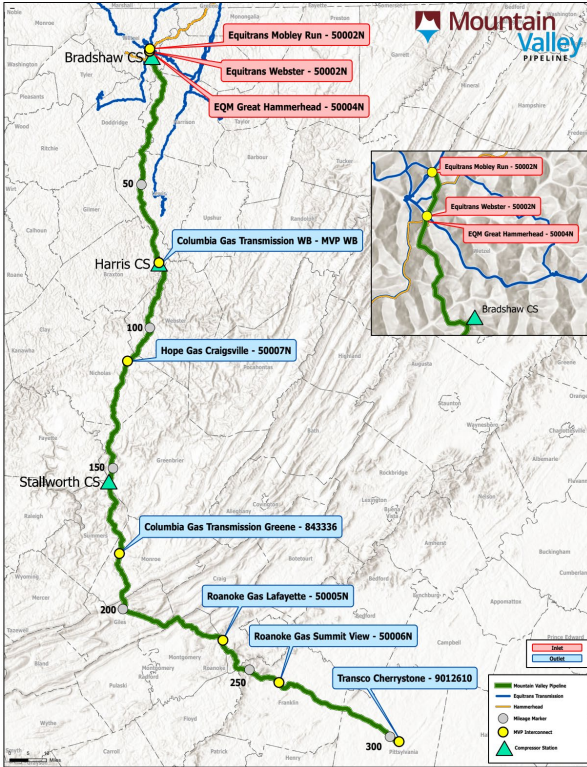


Project	Target In-Service	Current Status	Project Capacity
Southeast Supply Enhancement	1 4Q'27	Filed FERC application	1,597 MMcf/d
Commonwealth Energy Connector	2 4Q'25	In Construction	105 MMcf/d
Alabama to Georgia Connector	3 4Q'25	In Construction	64 MMcf/d
Gillis West	4 4Q'25	Executed PA w/ Open Season	115 MMcf/d
Dalton Lateral Expansion II	5 4Q'29	PA Executed	460 MMcf/d

Project	In-Service Date	Current Status	Project Capacity
Southeast Energy Connector	6 4/1/2025	★ In Service	150 MMcf/d
Texas to Louisiana Energy Pathway	7 4/1/2025	★ In Service	364 MMcf/d

Dekatherms converted to cubic feet at 1,000 cubic feet = 1 dekatherm;

Interstate Pipeline Projects- MVP – Transco Impact



- 303 mile of 42” pipeline
- Access to Utica & Marcellus Supply
- NW WV to S VA - Transco Zone 5
- Up to 2 Bcf/d
- FERC Certificate October 13, 2017
- In Service Date June 14, 2024

Transco Zonal Receipts (MDth/d)

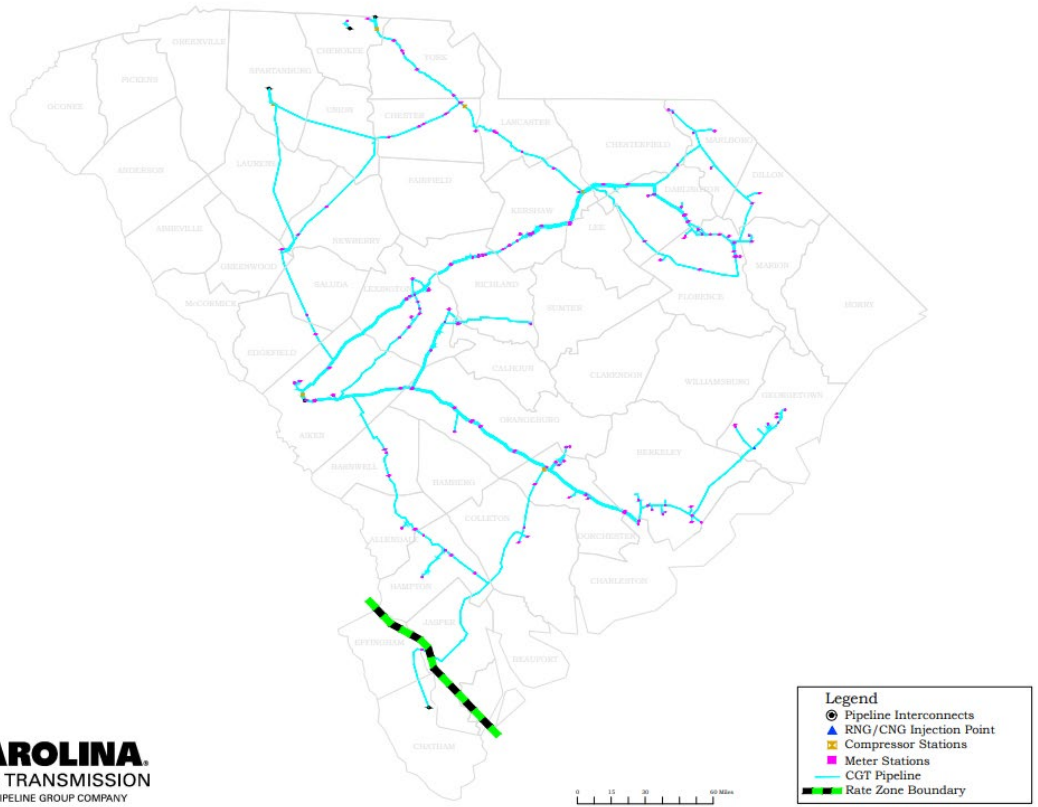
Supply Area	Apr '20 - Mar '21	Apr '21 - Mar '22	Apr '22 - Mar '23	Apr '23 - Mar '24	Apr '24 - Mar '25
Zone 1	163	238	343	335	346
Zone 2	359	596	724	529	545
Zone 3	2,001	2,094	2,031	1,991	2,022
Zone 4	3,646	3,908	3,866	3,691	3,481
Zone 5	331	452	429	440	1,309
Zone 6	6,219	6,412	6,262	6,388	5,976
Daily Average	12,719	13,700	13,654	13,373	13,680

WILLIAMS © 2025 The Williams Companies, Inc. All rights reserved

NYSE: WMB | www.williams.com 4/13/2025 | 11

Interstate Pipeline Projects-Carolina Gas Transmission

Carolina Growth Project
Non-Binding Solicitation
ISD Nov 2030?



Questions?



Thank You!

Please join us in OSC 120A for the
Lunch & Learn session.

Please share your experience
following the Lunch & Learn session.

