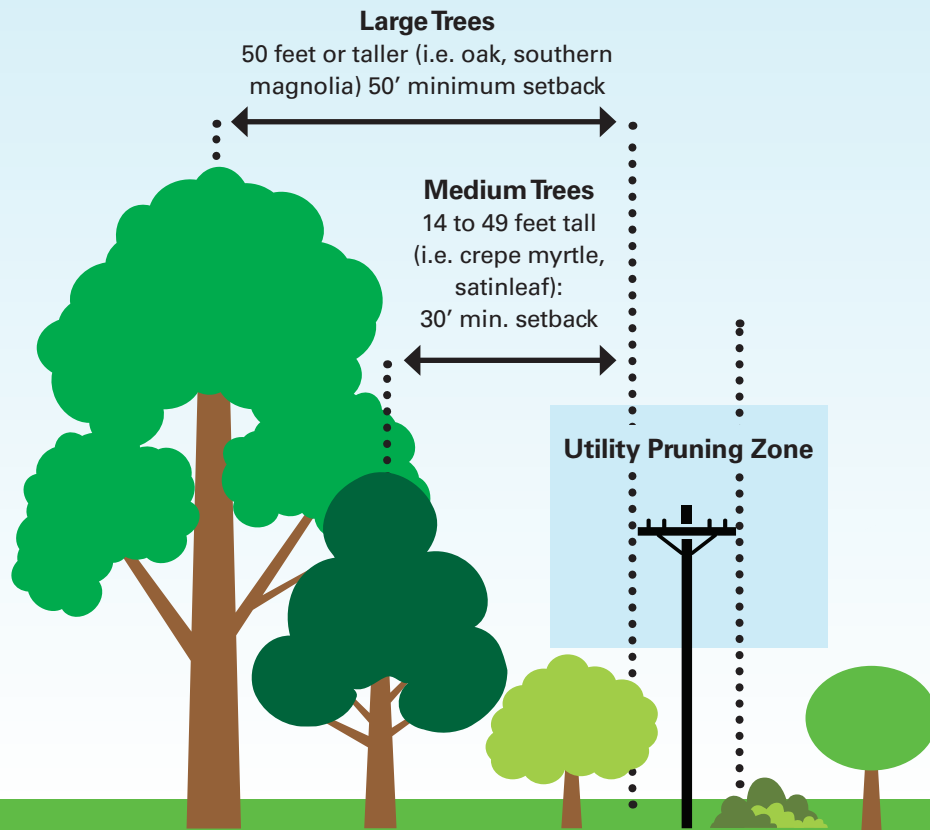


## What can you do?

One of the most important things businesses and homeowners can do is remember and **follow our Right Tree, Right Place guidelines**. If you're planting trees on your property, look up and note the location of power lines. Before you plant, keep in mind the potential growth of the trees (see diagram below). Think about how your tree will impact existing utility lines as it grows taller, wider and deeper. Keeping trees away from power lines means that, in the event they blow over or tree limbs become loose, they're much less likely to hit a power line and knock out power. This also keeps debris farther away from the lines which helps speed up restoration efforts after a storm. If you notice a tree or limb that is in need of trimming, you can submit a request to us online when you sign in to your Dominion Energy account. Don't wait for a hurricane or other major event. No amount of trimming can substitute for smart landscaping and responsible maintenance of trees and other vegetation by property owners.



A list of native plants that generally will not grow taller than 15 ft. at their maturity is available for you at [dominionenergy.com/treetrimming](https://www.dominionenergy.com/treetrimming).

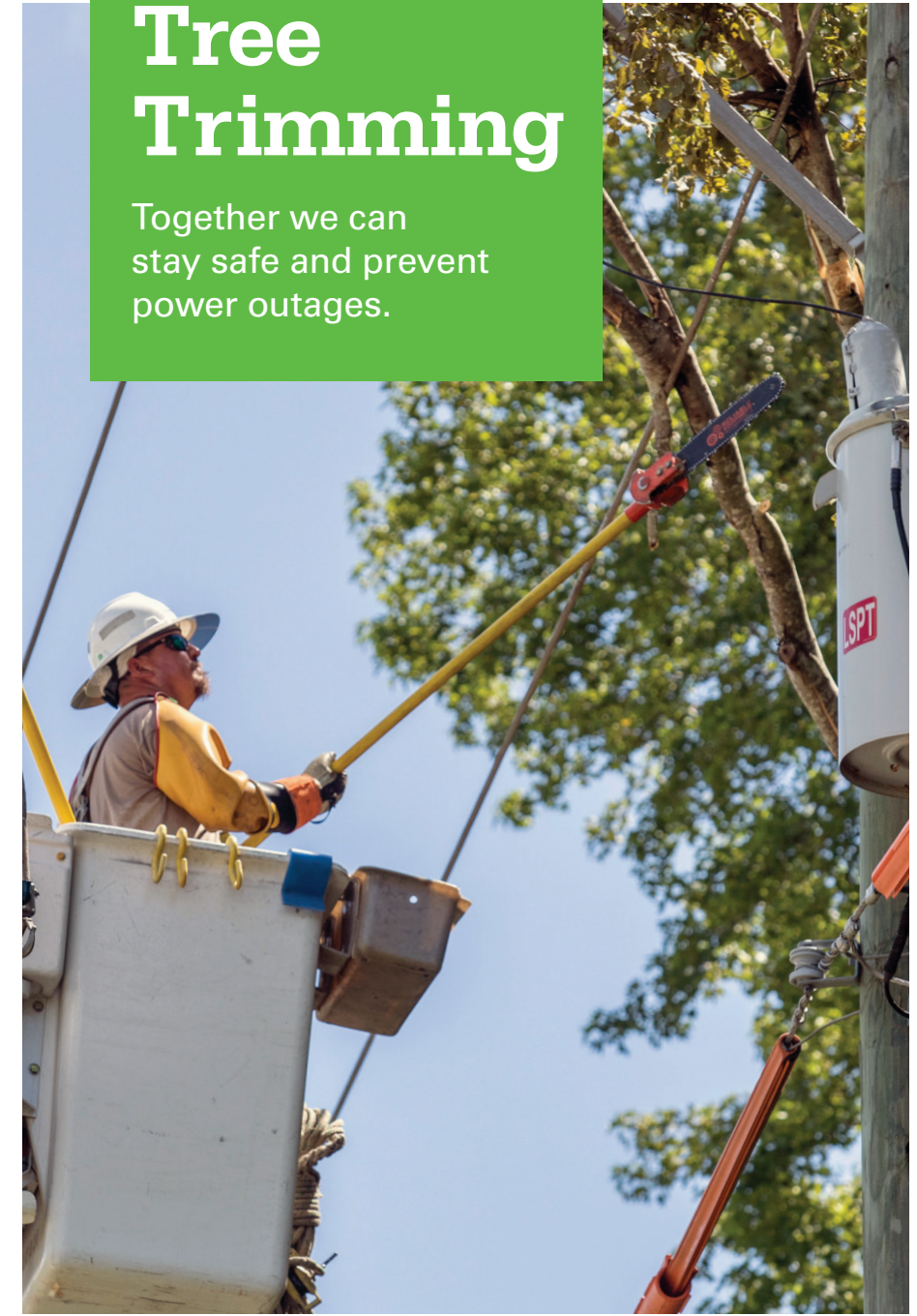


For more information about Tree Trimming in Virginia or North Carolina, visit [DominionEnergy.com/Trees](https://www.dominionenergy.com/trees).

100026R10834 03/26

## Tree Trimming

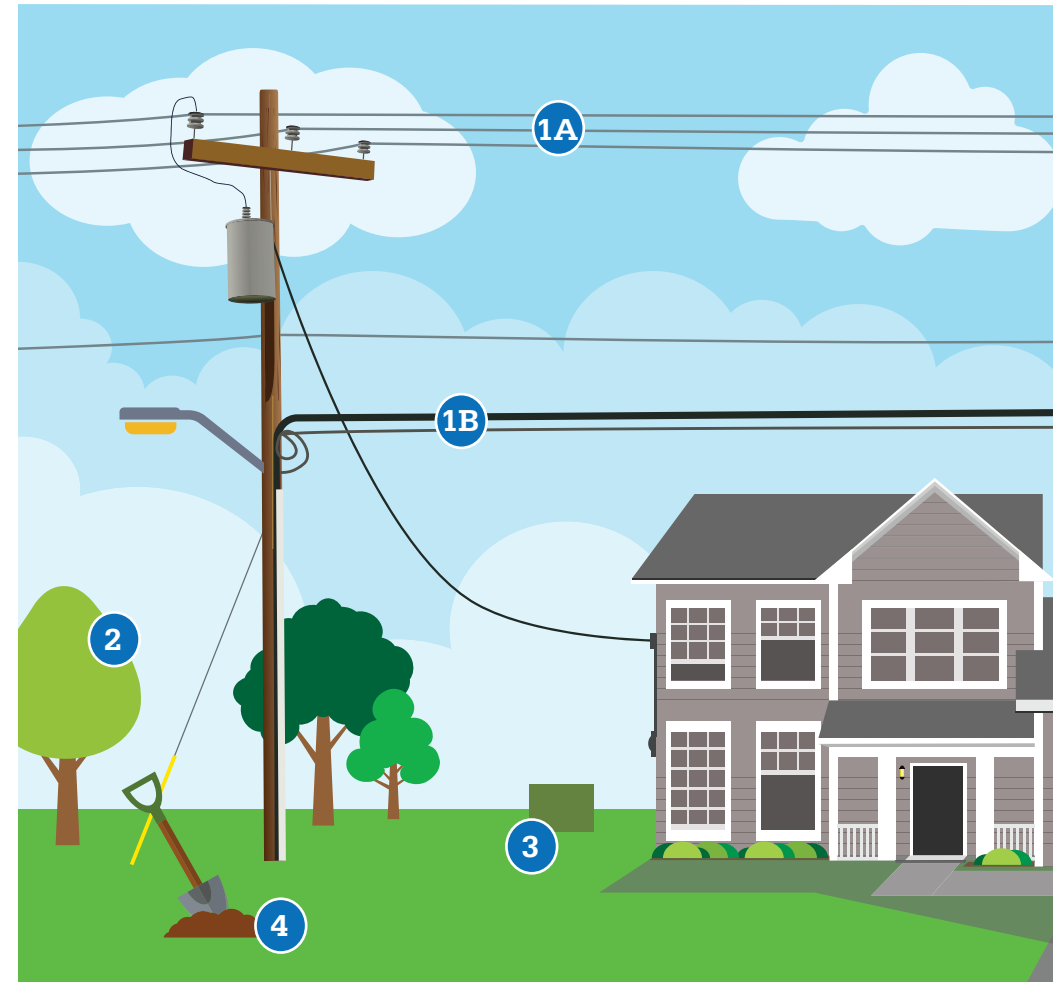
Together we can stay safe and prevent power outages.



## Right tree, right place.

When considering what tree and where to plant it, remember the phrase **“Right Tree, Right Place.”** Choosing the right tree depends on many factors including soil type, climate, and the amount of space the tree will have to grow both underground and overhead without any interference.

- 1 Where are the power lines? (1A)** Power lines are usually located at the top of the utility pole, farthest from the ground. **(1B)** Cable and phone lines run closer to the ground, below power lines.
- 2 Pick the right tree for the right place.** Consider how tall, wide, and deep your tree will be at maturity. Then, prior to planting, make sure trees are not planted within any utility rights of way. Trees planted under or beside an electric line inside the rights of way can be dangerous and are subject to pruning and/or removal. For a tree to achieve its natural shape and thrive it is important to choose a suitable site that does not have any interference under or above the ground.
- 3 Keep the transformers clear.** Keep any bushes or trees away from the transformer boxes to allow for maintenance and repairs. Maintain at least 12 feet of clear zone in the front and at least 4 feet in the back and sides.
- 4 Call Before You Dig.** If you'll be performing work in your yard that involves digging, South Carolina law requires you contact 811 before you begin to locate, and mark buried utility lines. Call at least four business days before you begin to avoid accidentally hitting underground utility lines. This free service helps keep everyone safe.



## Together we can prevent power outages.

Did you know trees are among the most common causes of outages and flickers, especially during storms? When trees and other forms of vegetation contact overhead power lines, this can cause interruptions to your service. Maintaining the area around the power lines is an important process to ensure you receive the safe, reliable service you expect and deserve.

- ✓ You can request tree trimming on your property when you sign in to your account. You can also upload a picture showing us the area and the tree of concern.
- ✓ You can view our online tree trimming map that shows where and when tree trimming will be done in your area.

### REMEMBER...

Only qualified utility line clearance contractors who meet OSHA qualifications are legally permitted to work within 10 feet of distribution power lines or work on a tree that has branches within 10 feet of distribution power lines. To learn more, visit [OSHA.gov](https://www.osha-slc.gov). Safety is our top priority. We urge property owners and contractors to notify us in advance of beginning any work near overhead lines to ensure a safe work zone.

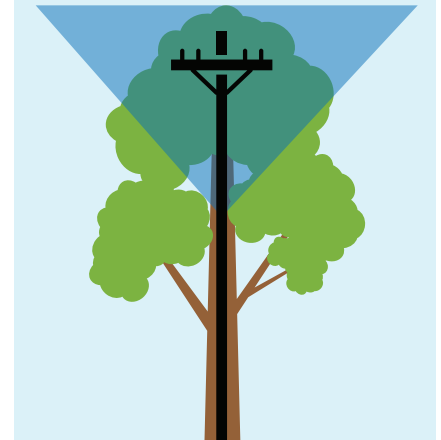
## How trees are trimmed.

The purpose of tree trimming is to protect the power lines and safely maintain service reliability for you.

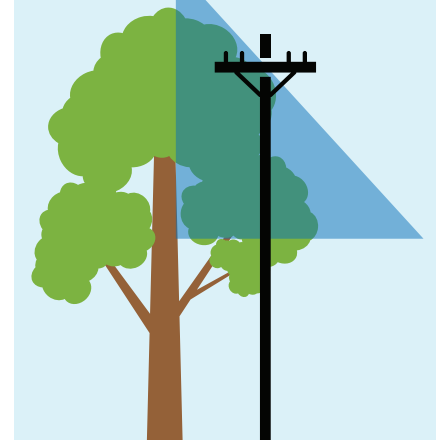
Dominion Energy's maintenance trimming is done on cycles typically ranging from four to five years. Trained line-clearing professionals follow ANSI – A300 Standards, which are the generally accepted industry standards for tree care practices. These professionals consider the tree structure and minimum clearance requirements before pruning.

We use directional pruning to guide tree growth away from power lines. The diagram below shows a typical “V” shaped approach on the left; on the right is an “L” shaped trim. We may use other types of trimming methods as well.

### V-shaped Trim



### L-shaped Trim



### Proper Pruning for Tree Health

**NO**  
Topping trees or leaving branch stubs severely damages trees and encourages rapid regrowth.

**YES**  
Pruning cuts should be made just outside the branch collar to respect natural growth patterns and direct future growth away from power lines.

