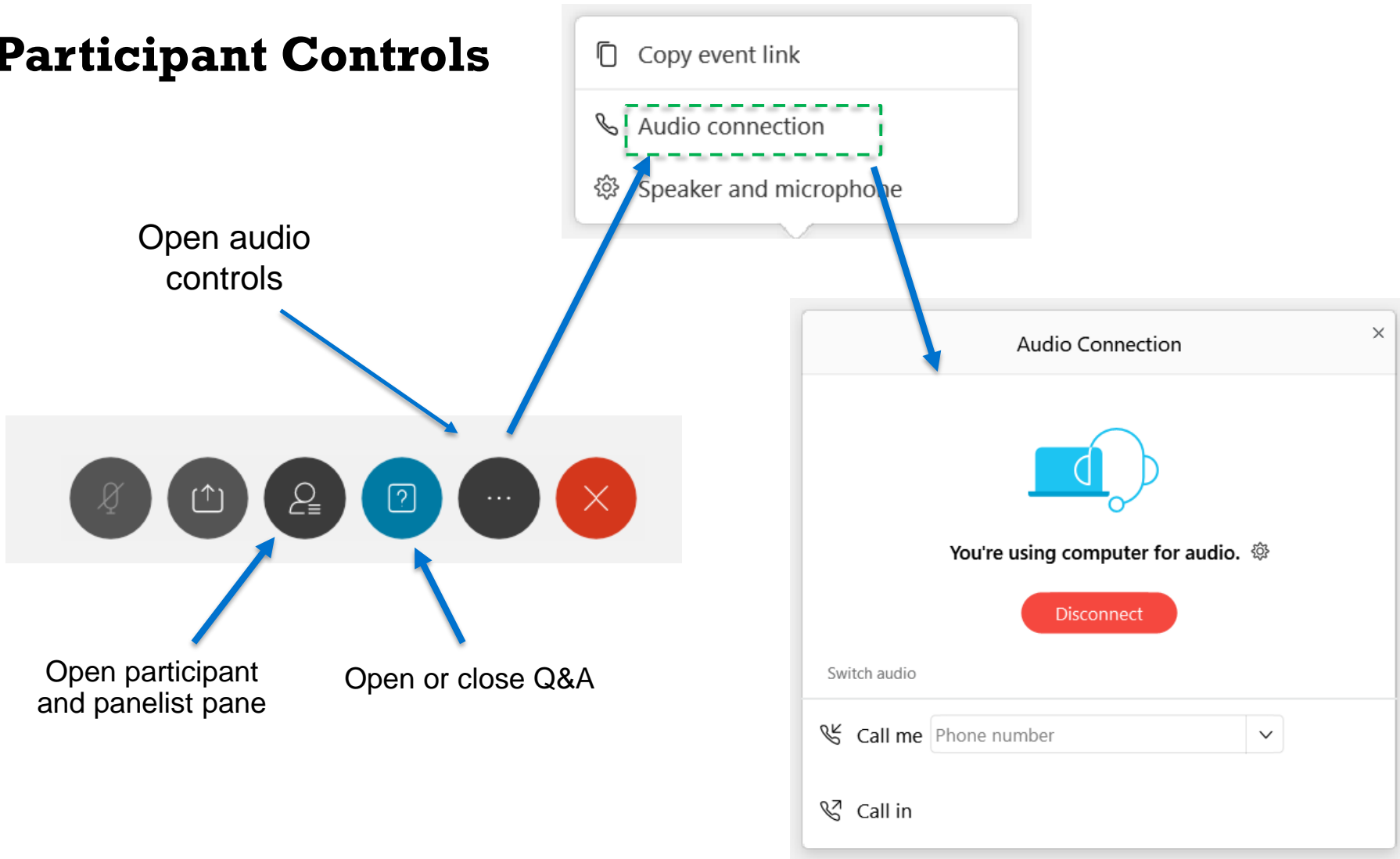


Chesterfield Power Station Coal Ash Removal Project

January 2020

Participant Controls

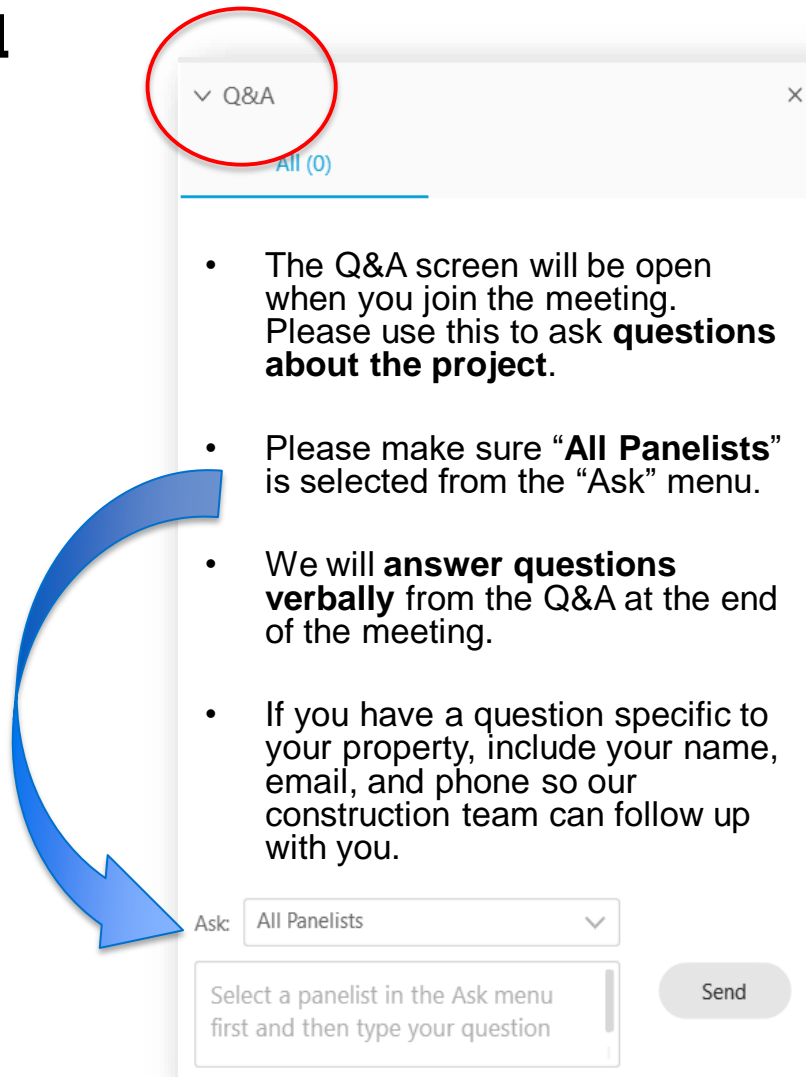


Open audio controls

Open participant and panelist pane

Open or close Q&A

Q&A Panel



Q&A

All (0)

- The Q&A screen will be open when you join the meeting. Please use this to ask **questions about the project.**
- Please make sure “**All Panelists**” is selected from the “Ask” menu.
- We will **answer questions verbally** from the Q&A at the end of the meeting.
- If you have a question specific to your property, include your name, email, and phone so our construction team can follow up with you.

Ask: All Panelists

Select a panelist in the Ask menu first and then type your question

Send

The Project Team



Shane,
Station Director



Jannina,
Station Environmental



Lisa ,
Environmental (Water)



Brennen,
Outside Counsel



Liz,
Environmental (Air)



Ginger,
Project Manager



James,
Public Policy



Spencer,
Construction Projects



Chris,
Construction Projects



Jenn,
Public Policy



Adena,
Outside Counsel



Alex,
Public Policy



Kelly,
Environmental



Thomas,
Environmental

Our Core Values



Safety

Our highest priority is keeping our employees and communities safe



Ethics

Doing right and doing well are inseparable



Excellence

Striving for excellence in everything we do



Embrace Change

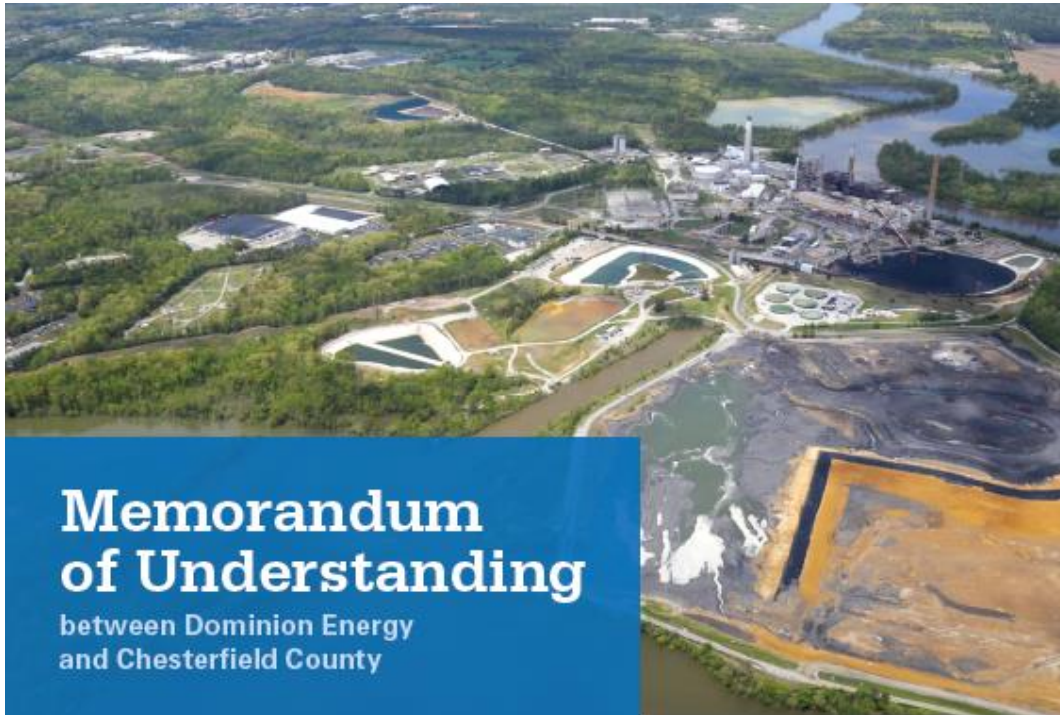
Changing the way we think about the today and tomorrow of our businesses



One Dominion Energy (Teamwork)

Sustainable performance depends on how well we support one another

Background – 2019 MOU



Legislation passed during the 2019 Virginia General Assembly requires Dominion Energy to remove all coal ash currently stored at Chesterfield Power Station within 15 years. The coal ash must be recycled or placed in a lined landfill.

The volume of coal ash to be removed from the Upper and Lower Ash Ponds at the station totals ~15 million cubic yards. This represents approximately half of the coal ash stored at the four Dominion Energy power stations in Virginia affected by the legislation.

As a result, it is anticipated that Chesterfield Power Station will face the longest timeline for coal ash closure. The station is also unique among Dominion Energy facilities impacted by the new law in that it is traversed by public roads and adjoins popular recreational and historical areas.

Background – 2019 MOU



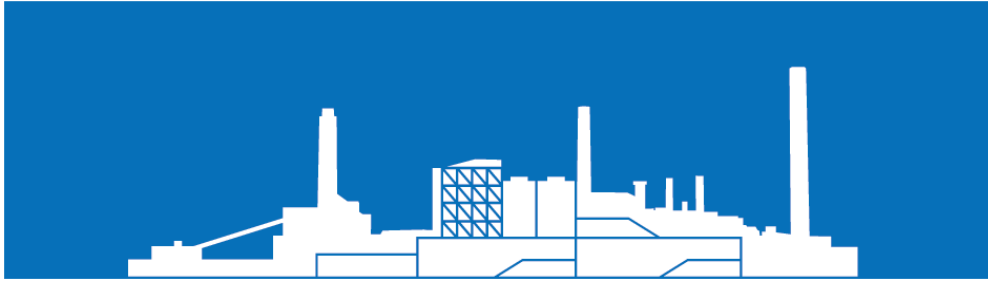
What is the purpose of the Memorandum of Understanding?

Chesterfield Power Station lies in close proximity to Chesterfield County's Henricus Historical Park, Dutch Gap Conservation Area, and the Dutch Gap Boat Launch, which attract about 500,000 visitors and 240,000 vehicles each year. Coal ash pond closure activities will impact the flow of traffic on roads that provide access to these important areas, as well as serve the local area. The legislation requires Dominion Energy to consult with the County on a plan to address various transportation-related impacts, including fugitive dust.

Given the station's unique location, Dominion Energy and Chesterfield County developed a Memorandum of Understanding that creates a framework for safety mitigating traffic impacts and preserving public access to the historical and recreational areas during the closure project. The Memorandum of Understanding first was signed on August 28, 2019. Since then, the parties have worked cooperatively to develop a comprehensive plan to address these issues.

The concepts outlined in the document and its attachments are subject to change as the parties complete their evaluations, and the plan must ultimately represent a prudent and cost-effective approach to managing impacts from the closure project.

Background – 2019 MOU



What does the Memorandum of Understanding specify?

Representatives from Dominion Energy and Chesterfield County met on a recurring basis to develop a plan that minimizes the impact of coal ash transport on adjacent property owners and the community at large.

Among other things, the plan addresses public access via Coxendale Road, alternative access to Henricus Historical Park and Dutch Gap Conservation Area, relocation of the Dutch Gap Boat Launch, and other improvements.

Dominion Energy reimbursed up to \$1.1 million in costs Chesterfield County incurred by engaging third-party consultants to undertake a comprehensive study of potential improvements to these facilities.

Working together during the global pandemic, the parties have amended and updated the MOU, which was finalized in December 2020. It provides a prudent, reasonable, and cost-effective approach for Dominion Energy's customers and complies with the transportation requirements outlined in the landmark coal ash legislation.

It provides funding commitments for constructing certain improvements necessary to manage impacts from the pond closure project. Those costs ultimately must be approved by the Virginia State Corporation Commission.

The Case for the 2020 MOU



Dominion Energy is required by 2019 Virginia House Bill 2786 and Senate Bill 1355 to remove coal ash from the two sites at Chesterfield Power Station and consult with the county on a transportation plan.

The 2020 Amended and Restated MOU reflects a cooperative understanding and agreement between Dominion Energy and the County and is entered into for the mutual benefit of both parties.

- 15 million cubic yards of coal ash is stored at Chesterfield Power Station.
- Chesterfield Power Station will face the longest timeline for coal ash pond closure.
- Local recreational and historical areas attract 500,000 visitors and 240,000 vehicles each year.
- Subject to the 2019 MOU, Dominion Energy funded a \$1.1 million county study on alternative access to Dutch Gap areas.
- Critical part of a transportation plan that minimizes the impact of any transport of coal ash on adjacent property owners and surrounding communities.

The Case for the 2020 MOU



Dominion Energy's Coal Ash Project is likely to interrupt the flow of traffic on public roads that provide access to and from county facilities.

Dominion Energy has agreed to provide up to \$68 million in funding to Chesterfield County for improvement projects to limit traffic impacts.

The funding and plan must be prudent, reasonable, and cost-effective, and is subject to oversight by the Virginia State Corporation Commission.

Funding Projects include:

- A new boat landing.

- Construction of a new access and pedestrian bridge on Coyote Drive.

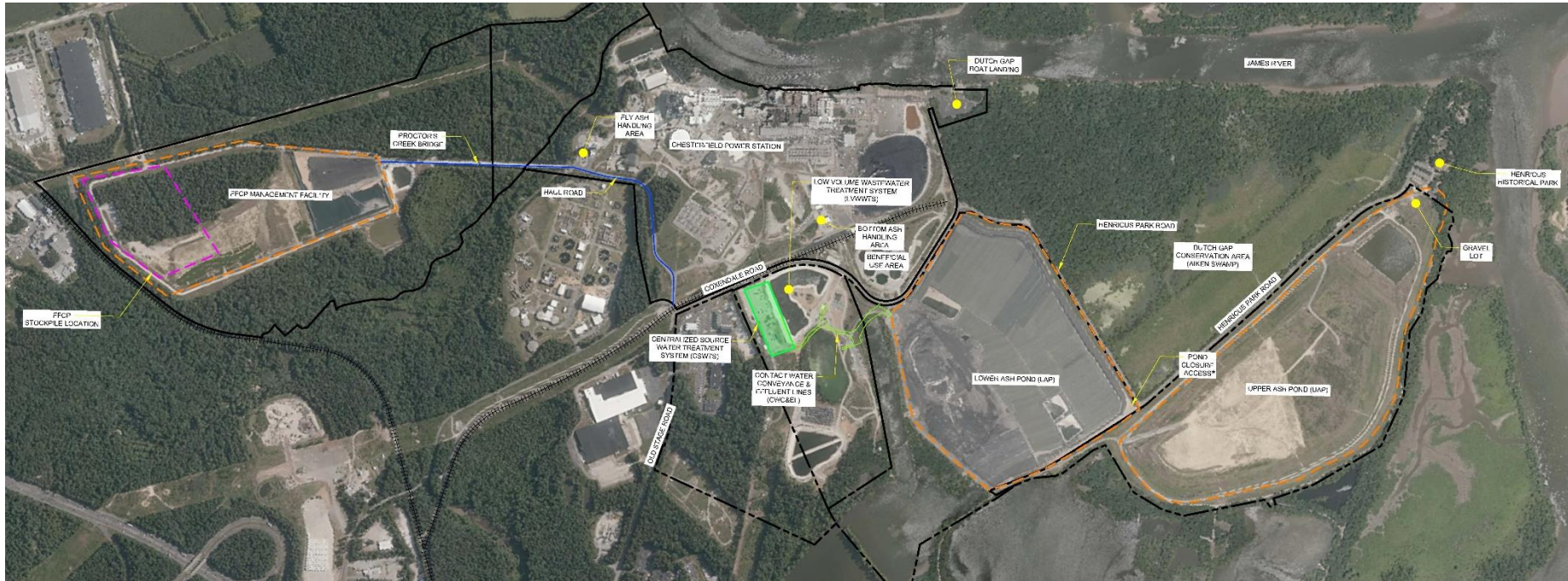
- Construction of a new stairway and trail improvements for access to Henricus Park.

- New Bridge-Access to Henricus Park

Conditional Use Permit Amendment

- Adds location for leachate storage east of Proctor's Creek bridge
- Modifies elevation of FFCP Management Facility stockpile adjacent to James River Industrial Park to AMSL
- Modifies the acreage from 10 to 40 that can be active at any one time
 - Increased due to EPA timelines for completing closure
 - Increased due to volume of FFCPs to be placed into Management Facility at any given time

Conditional Use Permit Amendment



Conditional Use Permit Amendment

- Ash from various FFCP Handling facilities will be moved to Management Facility
 - Fly Ash and Bottom Ash Handling Systems
 - Beneficial Use Area
 - Low Volume Wastewater and Centralized Source Treatment Systems
 - Upper and Lower Ash Ponds
- Maintains Henricus Park overflow gravel parking lot
 - Until FFCP removal begins
 - Easement for parking lot after FFCP project complete

Conditional Use Permit Amendment

- Modifies use of public roads and maintenance
 - Shared use of Coxendale and Henricus Park Roads during transportation of ash to FFCP Facility
 - Provides for maintenance and repair of public roads
 - Anticipates that certain sections of Coxendale and Henricus Park Roads will become private after new access roads in place (MOU)

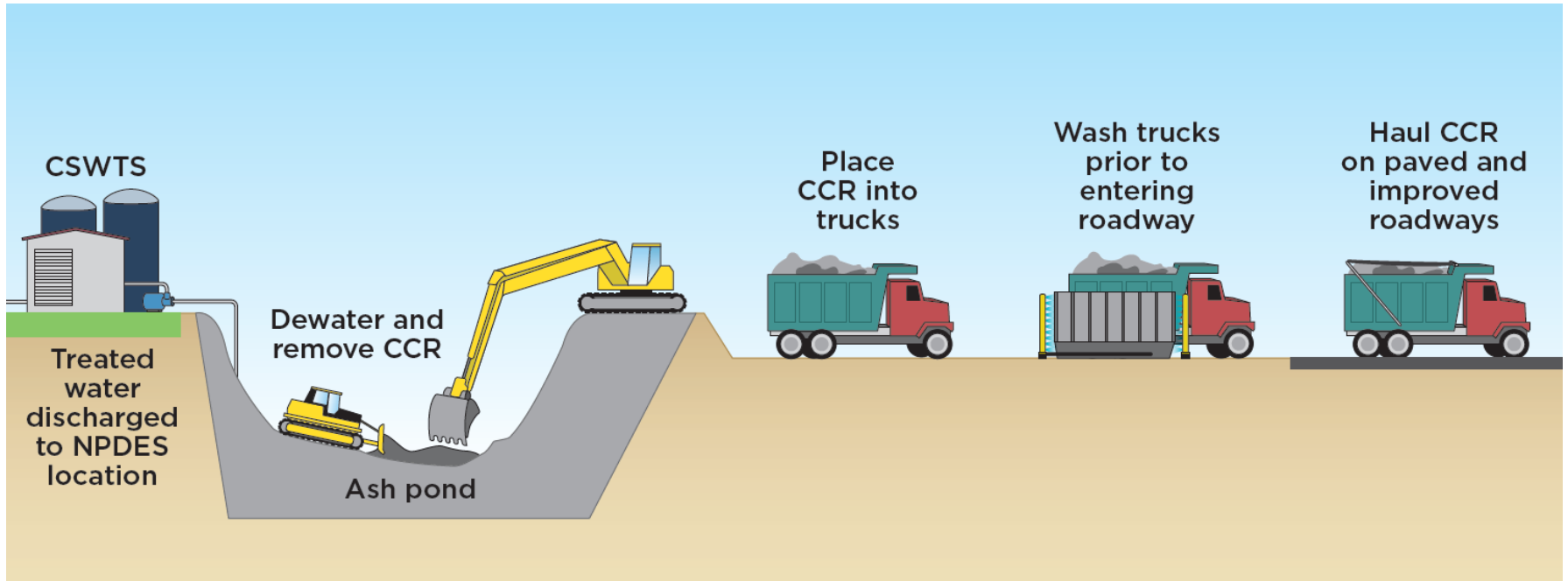
Moving Coal Ash – Coxendale/Henricus Park Roads



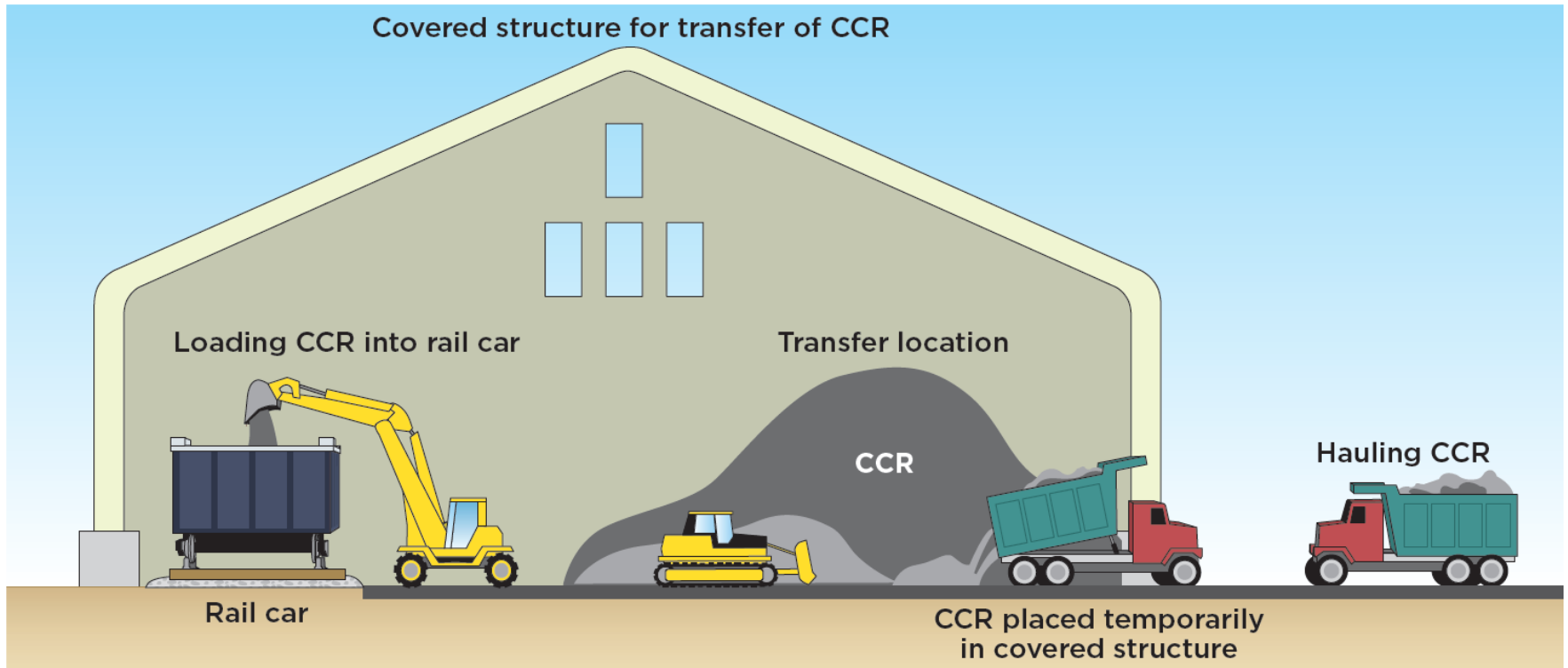
These intersections are as follows and are shown above:

1. Dominion Energy Entrance at Coxendale Road
2. Coxendale Road at Old Stage Road
3. Coxendale Road at Existing Lower Ash Pond Entrance and Beneficial Use facility
4. Henricus Park Road at Coxendale Road
5. Henricus Park Road at Proposed Lower Ash Pond Entrance

LANDFILL METHOD



Beneficial Use Method - Railroad



Looking Ahead



Although Dominion Energy's Coal Ash Project will increase traffic on Coxendale and Henricus Park roads, **access to these facilities/boat launch will continue** until new facilities are constructed by the county.

- After construction of the traffic and pedestrian bridges, the County will abandon the County-owned portion of Henricus Park Road as a public right-of-way.
- The County will also abandon and vacate the portion of Coxendale Road east of its intersection with Old Stage Road, surrounding the power station.
- The County will continue to have emergency access to Henricus Historical Park and Dutch Gap Conservation Area.

Next Steps in 2021

We remain committed to working with Chesterfield County and power station neighbors

Coal Ash Clean-Up Efforts

- Dominion Energy will begin safely moving coal ash as soon as the 3rd quarter of 2021
- Approximately 7 million cubic yards will be transported offsite using rail and recycled
- The rest will be stored in an adjacent state of the art landfill, adjoining Chesterfield Power Station

Coal Ash Communication Avenues

- Residents can view the MOU and transportation plan via www.dominionenergy.com/chesterfieldccr
- A virtual meeting will be held on January 14, 2021 to learn more about our efforts



Safety



Ethics



Excellence



Embrace
Change

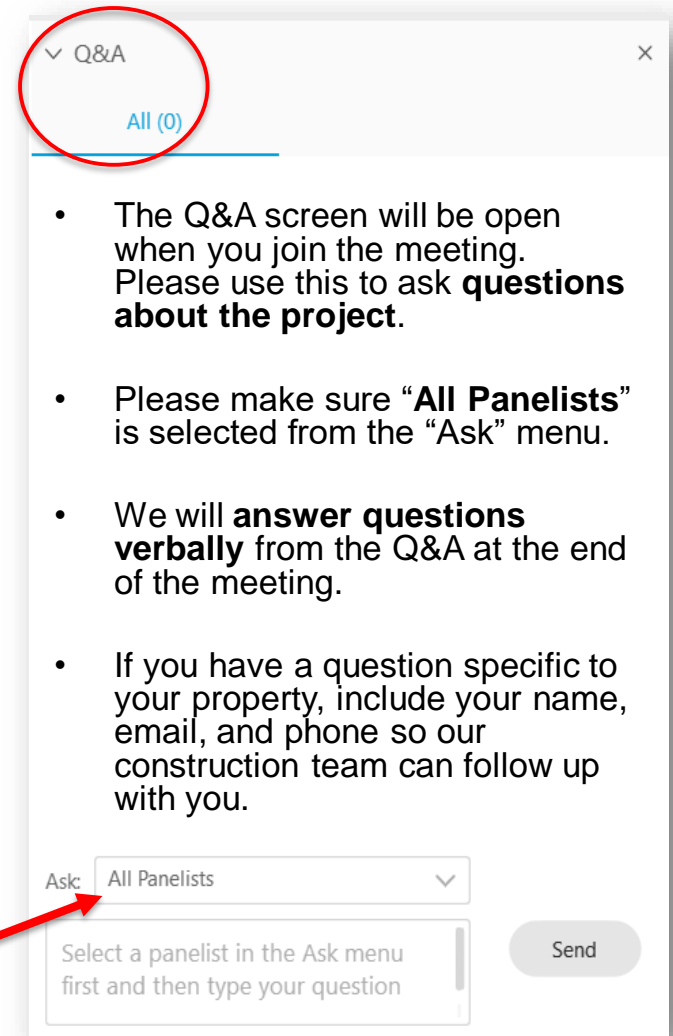


One Dominion
Energy

Q & A

Please submit all questions in the Q&A form.

Be sure “All Panelists” is selected in the dropdown box.



The screenshot shows a Q&A interface. At the top, there is a dropdown menu labeled "Q&A" with a downward arrow, which is circled in red. Below it, the text "All (0)" is displayed. The main content area contains a list of instructions:

- The Q&A screen will be open when you join the meeting. Please use this to ask **questions about the project**.
- Please make sure “**All Panelists**” is selected from the “Ask” menu.
- We will **answer questions verbally** from the Q&A at the end of the meeting.
- If you have a question specific to your property, include your name, email, and phone so our construction team can follow up with you.

At the bottom of the interface, there is a dropdown menu labeled "Ask:" with "All Panelists" selected. A red arrow points to this dropdown menu. Below the dropdown menu, there is a text input field with the placeholder text "Select a panelist in the Ask menu first and then type your question". To the right of the input field is a "Send" button.

Thank you!!!

**Chesterfield Coal Ash
Removal Project**

833-742-0462

ChesterfieldCCR@dominionenergy.com