

**Possum Point CCR Update**

**Public Informational Meeting**

**January 20, 2022**



**Dominion  
Energy<sup>®</sup>**

# Welcome – Participation Keys

---

## How To Participate

- Your audio will remain muted throughout the presentation
- If you're participating on the web or the mobile app, the Q&A screen is now open. Select "all panelists" and type in your question
- You only need to submit your question once; it will not appear on the screen
- If you are unable to use the web or mobile app and are accessing the meeting by calling the dial in number, you are not able to submit questions to the panel
- You can also submit questions by emailing [brendon.e.shaw@dominionenergy.com](mailto:brendon.e.shaw@dominionenergy.com)
- This meeting is being recorded and will be available on [dominionenergy.com](http://dominionenergy.com)

# Dominion Energy Core Values



**Safety**

*Our highest priority is keeping our employees and communities safe*



**Ethics**

*Doing right and doing well are inseparable*



**Excellence**

*Striving for excellence in everything we do*



**Embrace Change**

*Changing the way we think about the today and tomorrow of our businesses*



**One Dominion Energy  
(Teamwork)**

*Sustainable performance depends on how well we support one another*

# Possum Point Power Station





# Aerial View of Ponds



# Background – SB-1355

- ❑ **Requires removal of coal combustion residuals (CCR) from ash ponds - ~ 27.3 million cubic yards (Mcy)**
  - Bremo Power Station – 6.2 Mcy
  - Chesapeake Energy Center – 2.2 Mcy
  - Chesterfield Power Station – 14.9 Mcy
  - Possum Point Power Station – 4.0 Mcy
  
- ❑ **Requirements for Dominion Energy**
  - Beneficiate at least 6.8 million cubic yards from at least 2 sites
  - Utilize local workforce
  - Develop transportation plan for any offsite hauling of CCR materials
  - Cost recovery subject to an annual cap, over a 15-year time frame

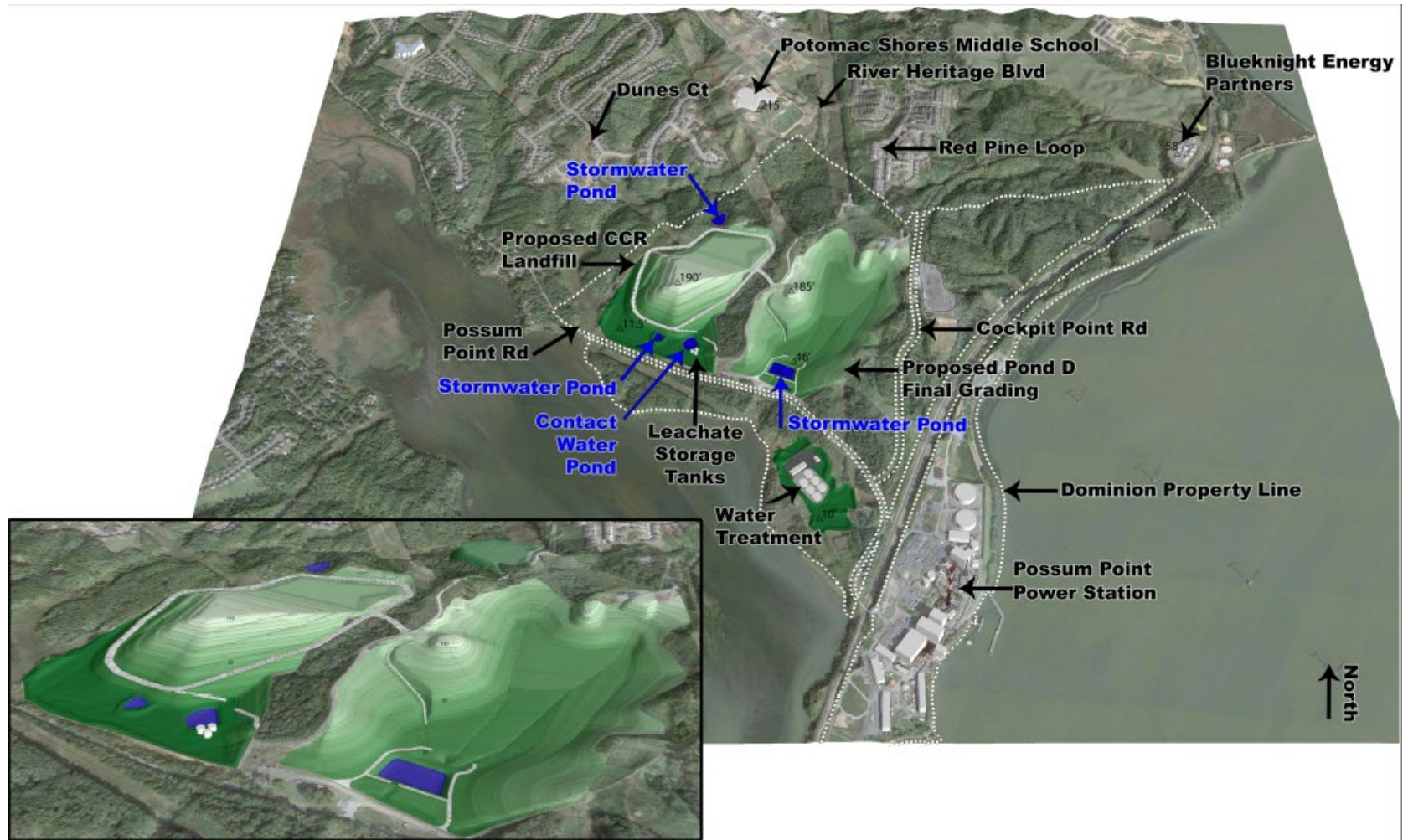


# Possum Point – CCR Disposal Options (SB-1355)

	On site landfill	Recycle Ash (50%) by rail; remainder to landfill by truck	Recycle Ash (50%) by rail; remainder to landfill by rail	Rail – all ash to offsite landfill
Cost	\$347M	\$703M	\$943M	\$1.19B
% recycled	0% (all to on site landfill)	50% (remainder to offsite landfill)	50% (remainder to offsite landfill)	0% (all taken to offsite landfill)
Transportation/ Duration	All ash to remain on site, 8 years	100+ trucks/day and 200+ railcars/week, 12 years	200+ railcars/week, 12 years	200+ railcars /week, 10 years
Technology	New landfill with double-liner system	Cement replacement, remainder to offsite landfill	Cement replacement, remainder to offsite landfill	Subtitle D permitted offsite landfill
Local Permitting	Site Plan, LD/E&S, Bldg. Permit PFR Determination	Site Plan, LD/E&S, Bldg. Permit Transportation Plan	Site Plan, LD/E&S, Bldg. Permit Transportation Plan	Site Plan, LD/E&S, Bldg. Permit Transportation Plan
Environmental Permitting	Solid Waste Closure Solid Waste New Landfill Minor Air Permit Wetlands Permit	Solid Waste Closure Major air permit (for onsite ash processing facility)	Solid Waste Closure Major Air Permit (for onsite ash processing facility)	Solid Waste Closure Minor Air Permit



# On Site Landfill – Rendering of Site Closure



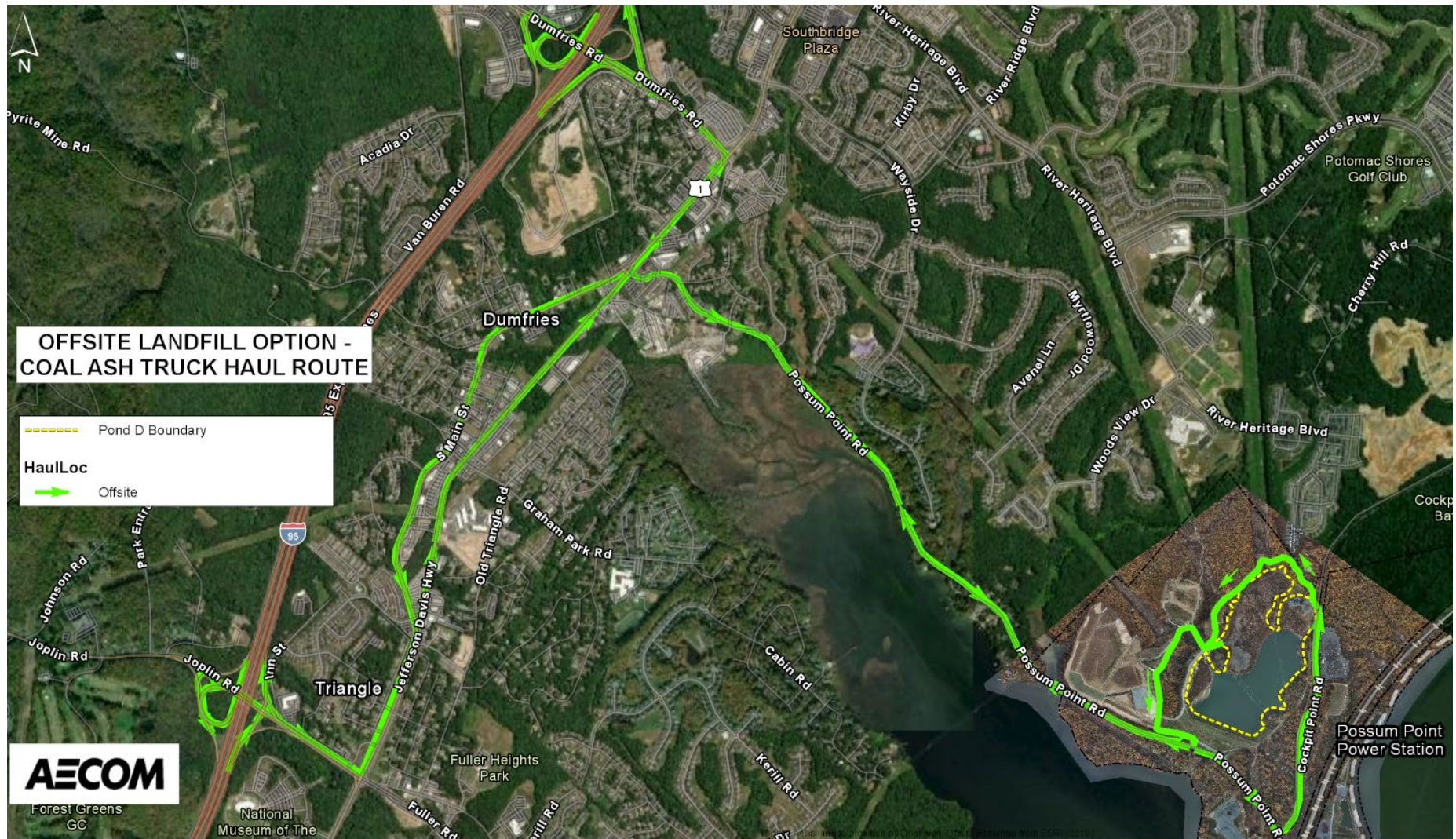


# On Site Landfill Option – Truck Route



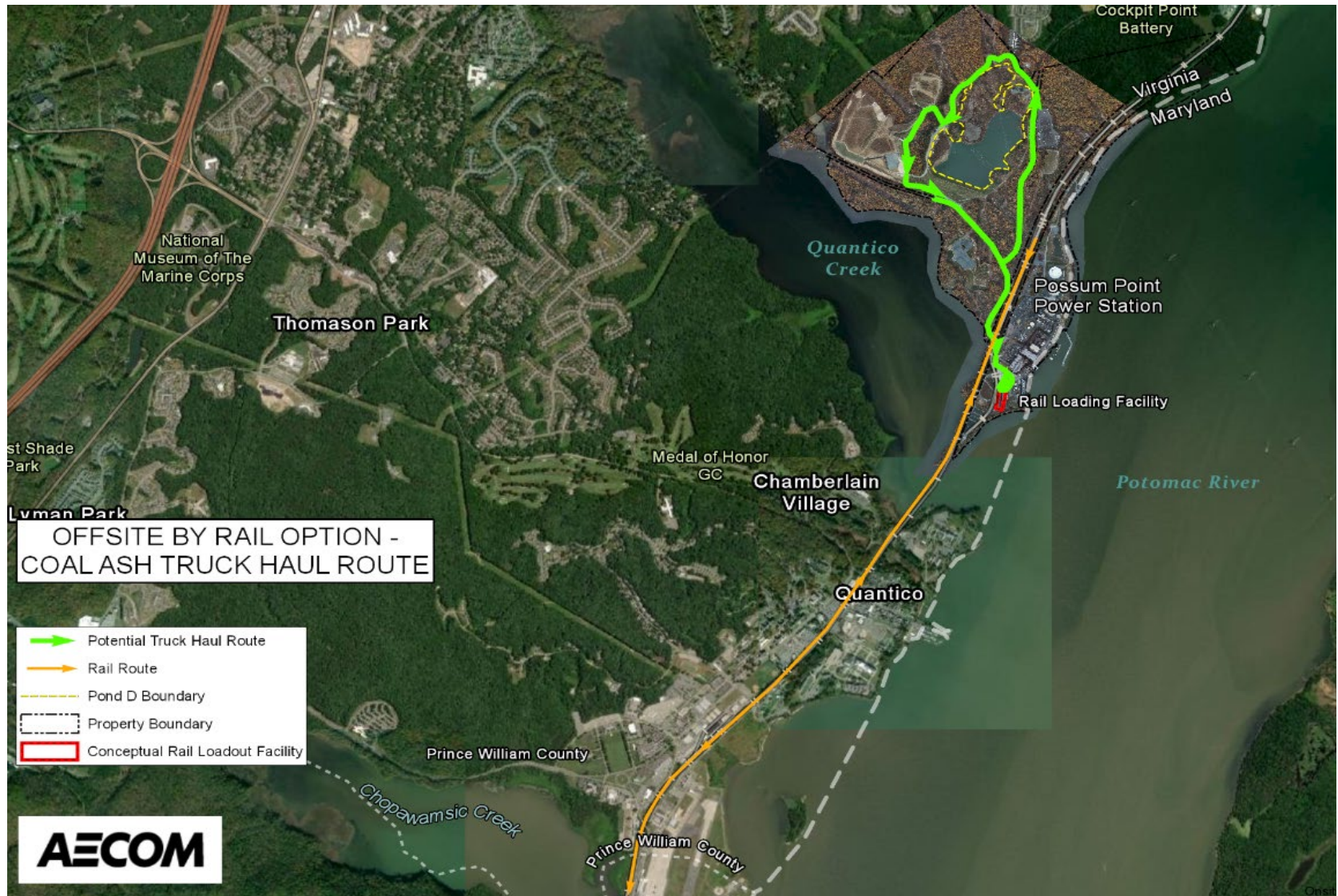


# Off Site Landfill Option – Truck Route





# Off Site Landfill Option – Rail / Truck

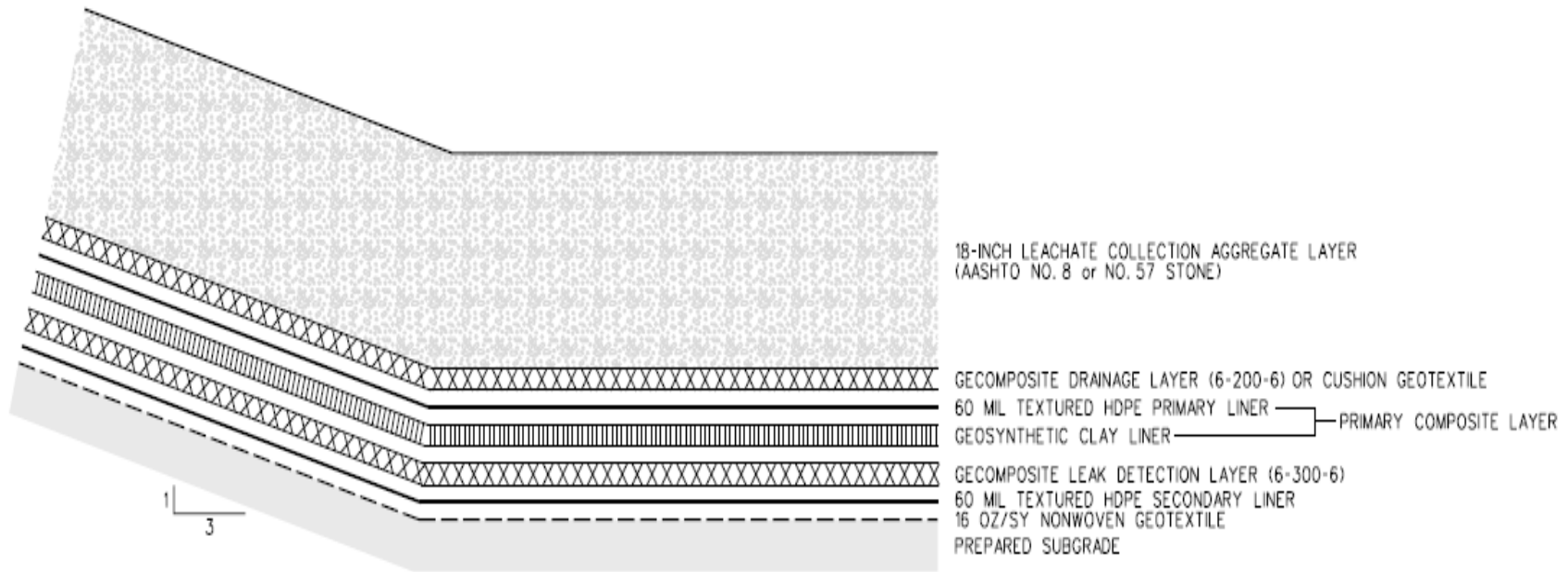




# Possum Point – Proposed Liner System

## □ Landfill Design – Double Liner System

- Above and beyond the regulatory requirements



**BASE LINER SYSTEM** 1  
NOT TO SCALE

# Possum Point – Summary of Options

---

## ☐ On Site Landfill is recommended option

- Overwhelmingly lowest cost to customers
- Shortest construction duration
  - Minimizes noise and fugitive dust impacts
- Minimizes truck traffic to local neighborhood
  - Trucks will be needed to transport equipment, material, soil, etc. and items other than CCR material
- Closure of Ponds A, B, C and E completed with no impacts to local neighborhood
- Dominion Energy is responsible for all closure and post-closure activities of landfill once constructed
  - Meets or exceeds all DEQ requirements
  - Inspections are performed to ensure all requirements are met
- Post construction land use options