



**Class III Landfill
Groundwater Monitoring System Certification
per 40 CFR 257.91(f)**

**Cope Generating Station
Cope, South Carolina**

September 29, 2023

*Prepared For
Dominion Energy South Carolina*

A handwritten signature in blue ink, reading "Nakia W. Addison".

Nakia W. Addison, P.E.
Senior Engineer

*TRC Environmental Corporation | Dominion Energy South Carolina
Groundwater Monitoring System Certification
Cope Station, Cope, South Carolina*

\\employees.root.local\env\ECC\Greenville\WPGVL\PJT2\416559\0007 Cope\R4165590007-017 Cope Station GW Monitoring Network Certification.docx

Regulatory Requirement

Pursuant to 40 CFR 257.91(a), the Dominion Energy South Carolina Cope Generating Station has installed a groundwater monitoring system around its Class III Industrial Landfill. Per 40 CFR 257.91(f), the owner or operator must obtain a certification from a qualified professional engineer stating the groundwater monitoring system has been designed and constructed to meet the requirements of 40 CFR 257.91.

In January 2023, Dominion Energy installed four (4) new groundwater monitoring wells (MW-LF-07 through MW-LF-10) along the northern and eastern edge of the Class III Industrial Landfill. The newly installed wells were sampled monthly from January 2023 through August 2023, to collect eight rounds of background monitoring data. To ensure the groundwater monitoring network meets the requirements of 40 CFR 257.91, the monitoring well network is being updated to include existing wells AS-LF-01, AS-LF-02, MW-LF-01, MW-LF-03, MW-LF-04 and newly installed wells MW-LF-07, MW-LF-08 and MW-LF-09. The revised monitoring network is presented on Figure 1: CCR Rule Compliance Monitoring Well Network. A groundwater potentiometric map from March 2023 is included as Figure 2.

Certification

I, the undersigned South Carolina Professional Engineer, hereby certify that I am familiar with the technical requirements of 40 CFR 257.91. I also certify that it is my professional opinion that, to the best of my knowledge, information, and belief, the groundwater monitoring system has been designed and constructed in accordance with current good and accepted engineering practice(s) and standard(s) appropriate to the nature of the project and the technical requirements of 40 CFR 257.91.

For the purpose of this document, “certify” and “certification” shall be interpreted and construed to be a “statement of professional opinion”. The certification is understood and intended to be an expression of my professional opinion as a South Carolina Licensed Professional Engineer, based upon knowledge, information, and belief. The statement(s) of professional opinion are not and shall not be interpreted or construed to be a guarantee or a warranty of the monitoring system.

Nakia W. Addison

31497

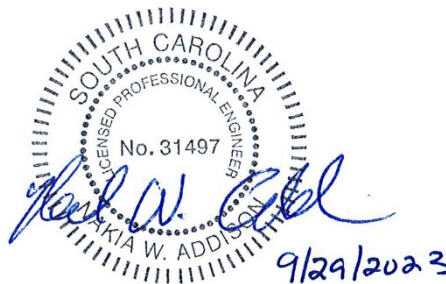
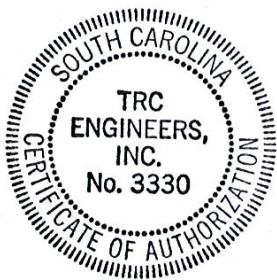
Printed Name of Professional Engineer

State of South Carolina License Number

September 29, 2023

Signature of Professional Engineer

Date



Coordinate System: NAD 1983 StatePlane South Carolina FIPS 3800 Feet, Map Rotation: 0
 -- Saved By: LILL on 9/28/2023, 16:29:37 PM, File Path: T:\PROJECTS\Dominion\South Carolina\17_Copec_SCI-A-APRX\2023_Figures.aprx, Figures.aprx, Layout Name: Fig 2 SLM



LEGEND

- CCR BACKGROUND MONITORING WELL
- CCR DOWNGRADIENT MONITORING WELL
- EVENT PIEZOMETER
- CLASS III LANDFILL
- CLOSED CLASS II LANDFILL
- CLASS III LANDFILL POND
- PROPERTY BOUNDARY

NOTES:

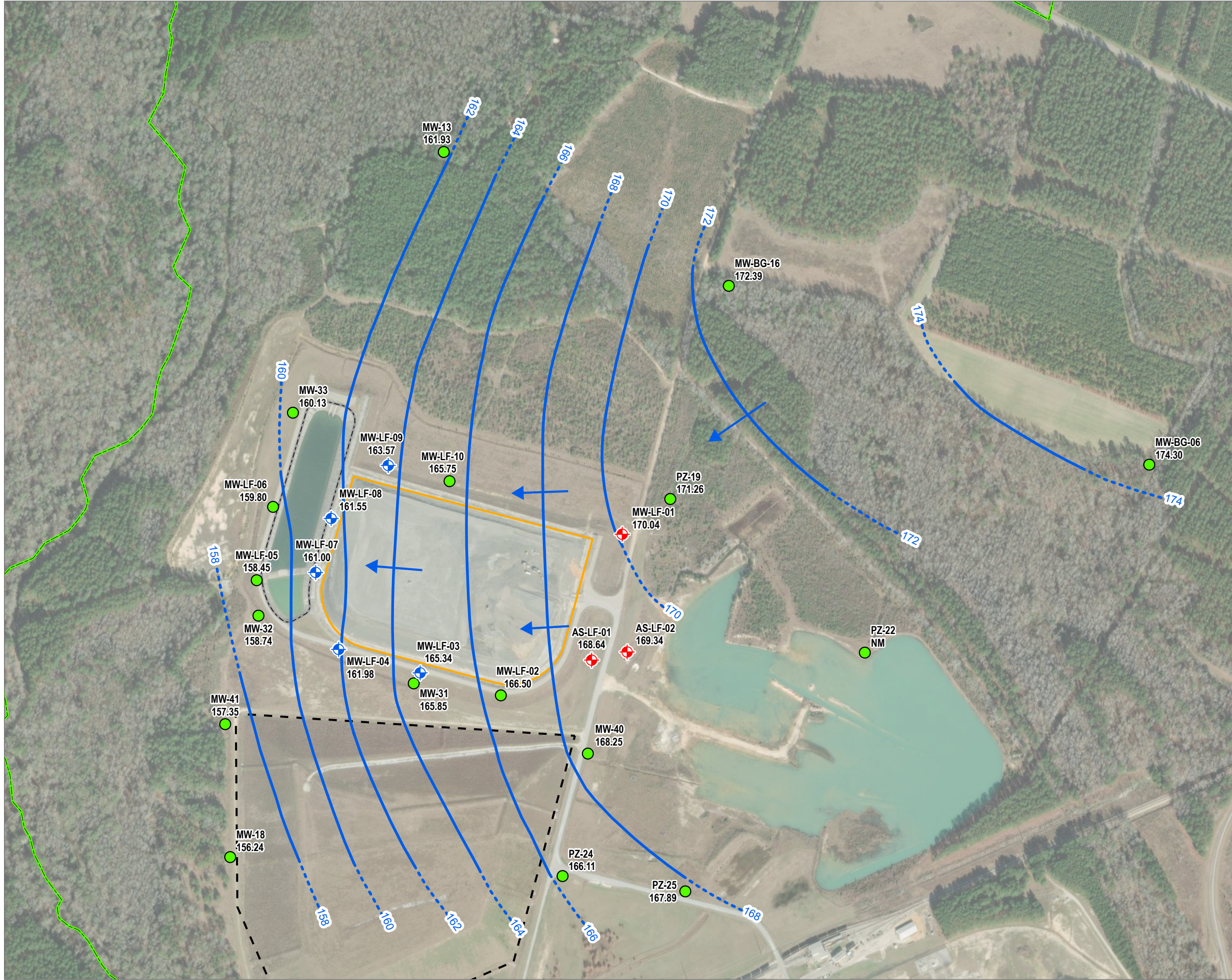
1. AERIAL IMAGE FROM ESRI WORLD IMAGERY DATED JANUARY 2020.



1:6,000
 1" = 500'
 0 250 500 FEET

PROJECT:		DESC COPE STATION CLASS III LANDFILL COPE, SOUTH CAROLINA	
TITLE:		CCR RULE COMPLIANCE MONITORING WELL NETWORK	
DRAWN BY:	H. BEST	PROJ. NO.:	416559.0007.0000
CHECKED BY:	A. KAILAS	FIGURE 1	
APPROVED BY:	J. YONTS		
DATE:	SEPTEMBER 2023		
		50 INTERNATIONAL DRIVE PATEWOOD PLAZA THREE, SUITE 150 GREENVILLE, SC 29615 PHONE: 864.281.0030	
		FILE: 2023_Figures.aprx	

Coordinate System: NAD 1983 StatePlane South Carolina FIPS 3900 Feet; Map Rotation: 0
 Saved By: LULL on 9/29/2023, 09:05:33 AM; File Path: T:\PROJECTS\Dominion\South Carolina\17_Copec - SC15-APRX\2023_Figures\2023_Figures.aprx; Layout Name: Fig02_Copec - CHILF_WF_20230307_V2



LEGEND

- CCR BACKGROUND MONITORING WELL
- CCR DOWNGRADIENT MONITORING WELL
- EVENT PIEZOMETER
- CLASS III LANDFILL
- CLOSED CLASS II LANDFILL
- CLASS III LANDFILL POND
- PROPERTY BOUNDARY
- WATER TABLE ELEVATION IN FEET ABOVE MEAN SEA LEVEL (2' CONTOUR INTERVALS) - DASHED WHERE INFERRED
- APPROXIMATE GROUNDWATER FLOW DIRECTION

169.34 WATER ELEVATION (FT. MSL)

- NOTES:**
1. AERIAL IMAGE FROM ESRI WORLD IMAGERY DATED JANUARY 2020.
 2. NM = NOT MEASURED.

1:6,000
 1" = 500'

0 250 500 FEET

PROJECT:		DESC COPE STATION CLASS III LANDFILL COPE, SOUTH CAROLINA	
TITLE:		GROUNDWATER POTENTIOMETRIC MAP MARCH 7, 2023	
DRAWN BY:	H. BEST	PROJ. NO.:	416559.0007.0000
CHECKED BY:	A. KAILAS	FIGURE 2	
APPROVED BY:	J. YONTS		
DATE:	SEPTEMBER 2023		
		50 INTERNATIONAL DRIVE PATEWOOD PLAZA THREE, SUITE 150 GREENVILLE, SC 29615 PHONE: 864.281.0030	
FILE:	2023_Figures.aprx		