



INITIAL SAFETY FACTOR ASSESSMENT

A world of
capabilities
delivered locally

INITIAL SAFETY FACTOR ASSESSMENT

Possum Point Power Station CCR Surface
Impoundments: Ponds ABC



Submitted To: Possum Point Power Station
19000 Possum Point Road
Dumfries, VA 22026

Submitted By: Golder Associates Inc.
2108 W. Laburnum Avenue, Suite 200
Richmond, VA 23227

April 2018

Project No. 16-62150





Table of Contents

1.0	Certification	1
2.0	Introduction	2
3.0	Slope Stability Assessment Methodology	2
3.1	Normal Storage Pool.....	2
3.2	Maximum Surcharge Pool.....	2
3.3	Pseudostatic Stability Analysis	3
3.4	Post-Earthquake Liquefaction Loading Conditions.....	3
3.5	Rapid Drawdown Conditions.....	3
4.0	Slope Stability Assessment Results.....	3
5.0	Conclusion	4
6.0	References	4

Tables

Table 1	Slope Stability Assessment Results
---------	------------------------------------

Attachments

Attachment 1	Material Properties Calculation Package
Attachment 2	Seismic Hazard Calculation Package
Attachment 3	Liquefaction Assessment Calculation Package
Attachment 4	Stability Figures

1.0 CERTIFICATION

This Initial Safety Factor Assessment for the Possum Point Power Station's Ponds ABC was prepared by Golder Associates Inc. (Golder). The document and Certification/Statement of Professional Opinion are based on and limited to information that Golder has relied on from Dominion and others, but not independently verified, as well as work products produced by Golder.

On the basis of and subject to the foregoing, it is my professional opinion as a Professional Engineer licensed in the Commonwealth of Virginia that this document has been prepared in accordance with good and accepted engineering practices as exercised by other engineers practicing in the same discipline(s), under similar circumstances, at the same time, and in the same locale. It is my professional opinion that the document was prepared consistent with the requirements of the United States Environmental Protection Agency's "Standards for the Disposal of Coal Combustion Residuals in Landfills and Surface Impoundments," published in the Federal Register on April 17, 2015, with an effective date of October 19, 2015 [40 CFR §257.73(e)], as well as with the requirements in §257.100 resulting from the EPA's "Hazardous and Solid Waste Management System: Disposal of Coal Combustion Residuals From Electric Utilities; Extension of Compliance Deadlines for Certain Inactive Surface Impoundments; Response to Partial Vacatur" published in the Federal Register on August 5, 2016 with an effective date of October 4, 2016 (40 CFR §257.100).

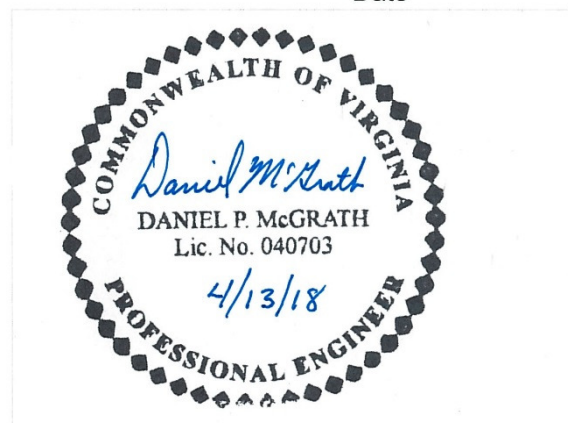
The use of the word "certification" and/or "certify" in this document shall be interpreted and construed as a Statement of Professional Opinion, and is not and shall not be interpreted or construed as a guarantee, warranty, or legal opinion.

Daniel McGrath
Print Name

Associate and Senior Consultant
Title

Daniel McGrath
Signature

4/13/18
Date



2.0 INTRODUCTION

This document discusses Golder's stability evaluation of the Ponds ABC impoundment structure at Dominion Energy Virginia's Possum Point Power Station in Dumfries, VA as it relates to the requirements in the USEPA's 2015 Final Rule on the Disposal of Coal Combustion Residuals (CCR; EPA Rule). According to section §257.73(e) of the *Rule*, stability of earth structures must be assessed under the following four loading conditions:

- Normal Storage Pool (§ 257.73(e)(i))
- Maximum Surcharge Pool (§ 257.73(e)(ii))
- Seismic Loading Conditions (§ 257.73(e)(iii))
- Post-Seismic Liquefaction Conditions (when liquefaction susceptible materials are present; § 257.73(e)(iv)).

3.0 SLOPE STABILITY ASSESSMENT METHODOLOGY

Stability safety factors were evaluated for each of the loading scenarios using the computer program SLIDE 7.0 Version 7.031 (2018). As required by the EPA rule, a general limit equilibrium (GLE) method (Morgenstern and Price) was used to calculate factors of safety. The factor of safety is calculated by dividing the resisting forces by the driving forces along the critical slip surface.

Stability was evaluated along three cross-sections as shown in Figure 1 in Attachment 4. Subsurface stratigraphy at each cross-section was developed from cone penetration tests (CPTs) completed during Golder's subsurface exploration in December 2017 and geotechnical data reported in Schnabel Engineering's 2014 report titled "Geotechnical Engineering Study, Possum Point Power Station Ash Ponds ABC, Dominion Resources Services, Inc., Prince William County, Virginia". Similarly, material properties were developed for the dike and foundation materials from these sources. The Material Properties Calculation Package (Attachment 1) provides more details on Golder's geotechnical exploration and evaluation of geotechnical data.

3.1 Normal Storage Pool

The water level in the ponds is maintained at or lower than elevation 4 feet mean sea level (ft-msl) through pumping efforts. Thus, the normal storage pool was set to elevation 4 ft-msl for stability analyses.

3.2 Maximum Surcharge Pool

For the maximum surcharge pool, the peak water level within the ponds was calculated for the 100-year, 24-hour rain event. This event was calculated to cause a temporary rise in water level within the ponds to approximate elevation 6.2 ft-msl. For further details, refer to the hydraulic and hydrology stormwater routing calculations presented in the *Inflow Design Flood Control System Plan* (Golder 2018).

3.3 Pseudostatic Stability Analysis

Factors of safety for stability under seismic loading conditions were calculated based on the earthquake hazard corresponding to a probability of exceedance of 2% in 50 years (2,475 year return period). Golder used the displacement-based seismic slope stability screening method as described in Bray and Travasarou (2009) to evaluate the seismic stability. For this method, a pseudo-static coefficient corresponding to an allowable displacement of six inches (15 cm) was used. The pseudo-static coefficient was calculated to be 0.01g. Details on the calculation of the pseudo-static coefficient are available in the Seismic Hazard Calculation Package (Attachment 2).

For stability analysis, Golder modeled the shear strength of each soil under seismic conditions using the minimum of the drained and the undrained strength of the soil. Please refer to Material Properties Package (Attachment 1) for more details about the drained and undrained strengths.

3.4 Post-Earthquake Liquefaction Loading Conditions

Golder evaluated the liquefaction susceptibility of the site soils as presented in the Liquefaction Assessment Calculation Package (Attachment 3). The calculated factor of safety against liquefaction is above 1.2 for all materials analyzed including dike soils and foundation soils. Thus, slope stability analyses evaluating the impact of liquefaction are not necessary. For more detail on the liquefaction analysis, please refer to the Liquefaction Assessment Calculation Package (Attachment 3).

3.5 Rapid Drawdown Conditions

Golder also considered the impacts of rapid drawdown of slopes as described in § 257.73(d)(vii) of the USEPA CCR Rule. The mapped (FIRM zone AE) 100-year flood level in the Quantico Creek is elevation 9 ft-msl. The toe areas of the downstream slopes are generally at elevation 6 ft-msl or higher; thus the dikes around Ponds ABC are not expected to be significantly impacted by rapid drawdown. Therefore, additional rapid drawdown analyses are not necessary.

4.0 SLOPE STABILITY ASSESSMENT RESULTS

The table below presents the results of the slope stability analyses of the dikes surrounding the ponds. For all cases analyzed, the calculated factors of safety are in excess of those required in Sections §257.73(e)(i) to (iv) of the EPA Rule. The detailed stability result figures are available in Attachment 4.

Table 1: Slope Stability Assessment Results

Analysis Case	Normal Storage Pool	Max. Surcharge Pool	Seismic	Post-Earthquake Liquefaction
Rule Section	§ 257.73(e)(i)	§ 257.73(e)(ii)	§ 257.73(e)(iii)	§ 257.73(e)(iv)
Target Factor of Safety	1.5	1.4	1.0	1.2
Cross-Sections	Factor of Safety			
A-A'	1.8	1.8	1.7	Soils are Calculated to Not Liquefy
B-B'	1.9	1.9	1.8	
C-C'	1.8	1.8	1.8	

5.0 CONCLUSION

Golder evaluated the slope stability of the dikes surrounding Ponds ABC at Dominion Energy’s Possum Point Power Station in accordance with the EPA Rule on the Disposal of Coal Combustion Residuals. Specifically, the dikes were evaluated for stability in the four loading scenarios presented in section §257.73(e) of the EPA Rule:

- Normal Storage Pool (§ 257.73(e)(i))
- Maximum Surcharge Pool (§ 257.73(e)(ii))
- Seismic Loading Conditions (§ 257.73(e)(iii))
- Post-Seismic Liquefaction Conditions (when liquefaction susceptible materials are present; § 257.73(e)(iv))

For each loading case, the dikes were calculated to meet or exceed the target factor of safety presented in the EPA rule.

6.0 REFERENCES

Bray, J.D., and Travasarou, T. 2009. Pseudostatic Coefficient for Use in Simplified Seismic Slope Stability Evaluation. *Journal of Geotechnical and Geoenvironmental Engineering*, Vol. 135, No. 9: pp. 1336-1340.

Golder (2018), Inflow Design Flood Control System Plan

Rocscience (2018), SLIDE Version 7.031.

Schnabel Engineering (2014). “Geotechnical Engineering Study, Possum Point Power Station Ash Pond ABC, Dominion Resources Services, Inc., Prince William County, Virginia.” December 9, 2014.

USEPA (2015), Hazardous and Solid Waste Management System; Disposal of Coal Combustion Residuals From Electric Utilities, § 40 CFR Parts 257 and 261.

ATTACHMENT 1

Material Properties Calculation Package

Date:	February 15, 2018	Made by:	G. Martin
Project No.:	1662150	Checked by:	L. Jin
Site Name:	Possum Point – Ponds ABC	Reviewed by:	G. Hebeler
Subject	MATERIAL PROPERTIES PACKAGE		

1.0 OBJECTIVE

The objective of this package is to characterize materials found at Ponds ABC of Dominion Energy's Possum Point Power Station in Dumfries, VA. Specifically, Golder assessed the dike soils and foundation soils at Ponds ABC to support stability and liquefaction analyses of the dikes.

2.0 METHODOLOGY

Site materials were grouped into five representative units for further analysis:

- Dike Fill
- Fine Grained Alluvium
- Coarse Grained Alluvium
- Terrace Deposits
- Cretaceous Sediments

For each unit, Golder developed material properties for use in stability and liquefaction analyses. Material properties were evaluated based on geotechnical data available from the following sources:

- Schnabel Engineering's 2014 report titled "Geotechnical Engineering Study, Possum Point Power Station Ash Pond ABC, Dominion Resources Services, Inc., Prince William County, Virginia"
- Golder's geotechnical exploration completed in December 2017.

2.1 Schnabel Engineering Report

Schnabel Engineering (Schnabel) completed a stability assessment of dikes surrounding Ponds ABC in December 2014. Their report includes Standard Penetration Test (SPT) borehole data and qualitative hand auger logs in the dikes surrounding Ponds ABC. Schnabel supplemented their field data with laboratory testing including two consolidated-undrained (CU) triaxial tests. One CU test was performed on the dike soils (noted as Fine-Grained Embankment Fill, Stratum A1 in the report), and the other CU test was conducted on a sample of the foundation soils (identified as Fine-Grained Alluvium, Stratum B1).



CALCULATIONS

Page 2 of 3

Project No.:	1662150	Made by:	G. Martin
Site Name:	Possum Point – Pond ABC Inactive Pond Demonstration	Checked by:	L. Jin
Date:	2/15/18	Reviewed by:	G. Hebeler

Schnabel categorized the dike and foundation soils into six groups in their report, and for each group, Schnabel determined representative total and effective strengths and unit weights. Golder used the same groupings (listed above) for analyses, except Golder modeled the dike fill soils as a single stratum. Schnabel divided the dike fill soils into a fine-grained unit and a coarse-grained unit, but this distinction was not apparent in the CPT data Golder collected in December 2017. Golder found the dike soils to be more closely represented by Schnabel's fine-grained fill.

2.2 Golder Geotechnical Explorations

Golder completed six cone penetration tests (CPTs) to characterize the dike and foundation materials. These tests were conducted by ConeTec on December 19 and 20 of 2017 under the direction and supervision of Golder engineer Sarah Fick. Table 1 lists general information for the CPTs.

Table 1: Golder CPT Locations and Testing Notes

Sounding ID	Date	Total Depth (ft)	Latitude ¹ (deg)	Longitude ¹ (deg)	Ground Surface Elevation ² (ft-msl)	Testing Notes
PP-ABC-SCPT-01	12/19/17	75.0	38.54265	-77.28434	21.3	Seismic CPT
PP-ABC-CPT-02	12/19/17	35.9	38.54145	-77.28338	21.6	
PP-ABC-CPT-03	12/20/17	33.1	38.54278	-77.28463	14.8	
PP-ABC-CPT-04	12/20/17	55.8	38.54363	-77.28575	19.0	
PP-ABC-CPT-05	12/20/17	62.3	38.54405	-77.28567	21.2	
PP-ABC-CPT-06	12/20/17	32.7	38.54183	-77.28421	21.7	

Notes:

1. Latitude/Longitude - WGS 84. Coordinates were recorded with a handheld GPS unit and should be considered approximate.

CPT logs presenting raw measurements (tip, sleeve, and pore pressure) and correlated shear strengths with depth are presented in the attachment following this text. The CPT correlation to undrained strength does not properly model the strength of the cretaceous layer; thus, Golder excluded the undrained shear strength correlation in this layer from the CPT logs.

3.0 SELECTED MATERIAL PROPERTIES

Golder selected strength parameters and unit weights for use in stability analyses based on data available in Schnabel's report and CPT data collected during Golder's geotechnical exploration. Golder found the values presented in Schnabel's report to be consistent with CPT data, so Golder used a modified version of Schnabel's properties. The following modifications were made to the values presented by Schnabel:

CALCULATIONS

Page 3 of 3

Project No.:	1662150	Made by:	G. Martin
Site Name:	Possum Point – Pond ABC Inactive Pond Demonstration	Checked by:	L. Jin
Date:	2/15/18	Reviewed by:	G. Hebler

- All dike fill was modeled as a single unit.
- Dike fill drained properties were modeled using a higher friction angle and lower cohesion than presented by Schnabel to better match conditions observed from CPT data. Dike fill undrained properties were based on Schnabel's fine-grained dike fill properties.
- The Coarse Grained Alluvium was modeled with drained strengths for all analyses. CPT data indicates this material will not behave in an undrained state during the scenarios considered in stability analyses.

The selected properties used for stability analyses are listed in Table 2. Also, the selected strengths are plotted on the attached CPT logs with the values correlated from CPT data.

Table 2: Selected Material Properties for Use in Slope Stability Analysis

Material	Drained Strength		Undrained Strength		Unit Weight (pcf)
	ϕ' (degrees)	c' (psf)	ϕ (degrees)	c (psf)	
Dike Fill	30	100	14	290	125
Fine Grained Alluvium	28	100	14	290	120
Coarse Grained Alluvium	32	200	N/A	N/A	120
Terrace Deposits	34	0	N/A	N/A	130
Cretaceous Sediments	40	0	0	3,000	125

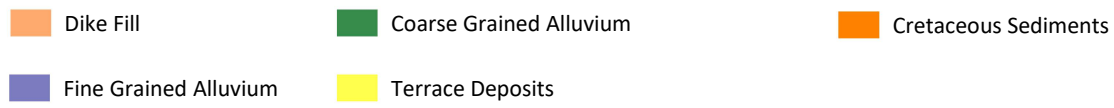
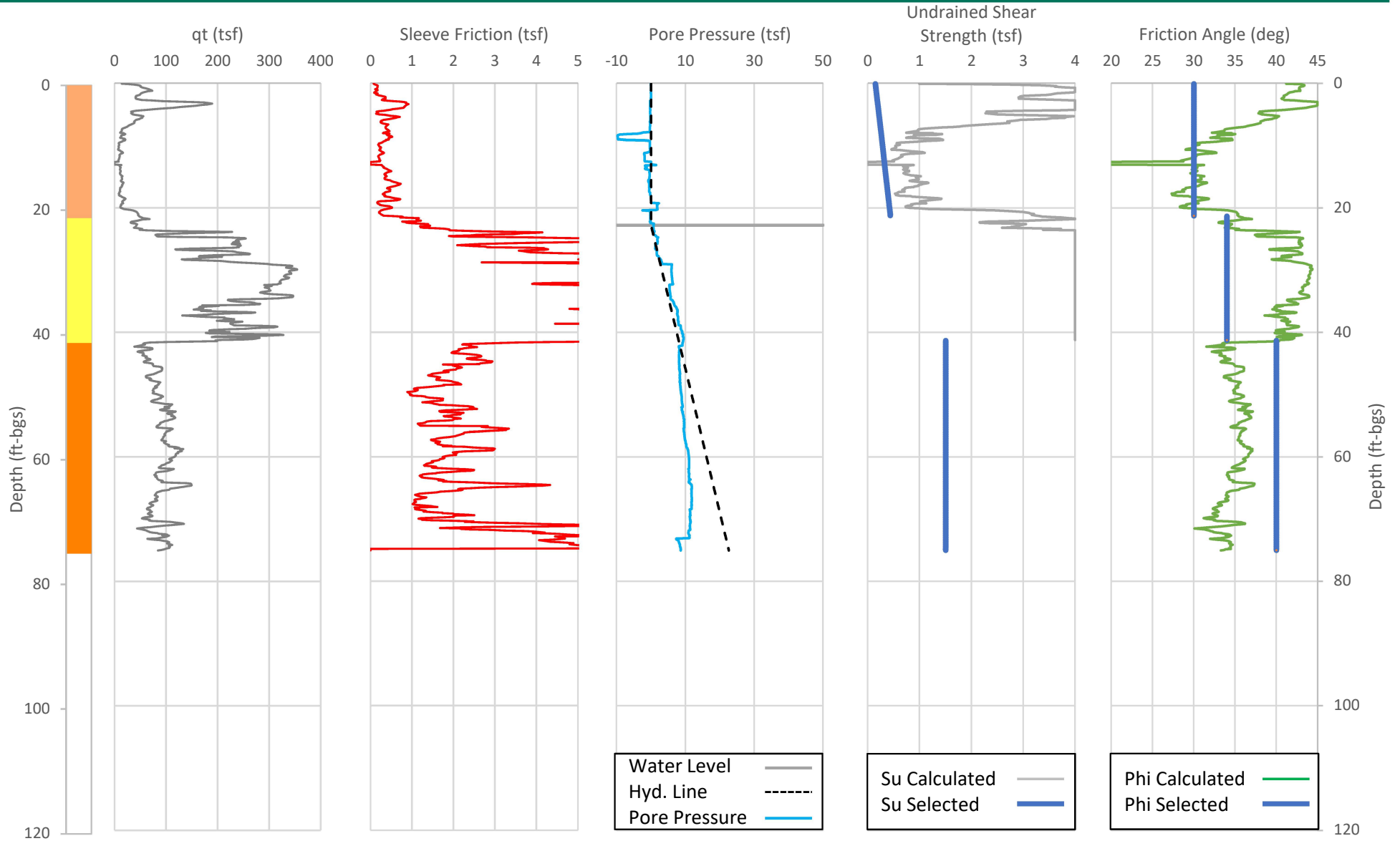
4.0 REFERENCES

Schnabel Engineering (2014). "Geotechnical Engineering Study, Possum Point Power Station Ash Pond ABC, Dominion Resources Services, Inc., Prince William County, Virginia." December 9, 2014.

Test ID: CPT-ABC-01
GS Elev. (ft-msl): 21.3
Test Depth (ft): 75.0

CPT Rig Type: Track
Location: Possum Point
Groundwater Depth (ft-bgs): 22.8

Project #: 1662150
Project Name: Inactive Pond Demonstrations
Client: Dominion Energy

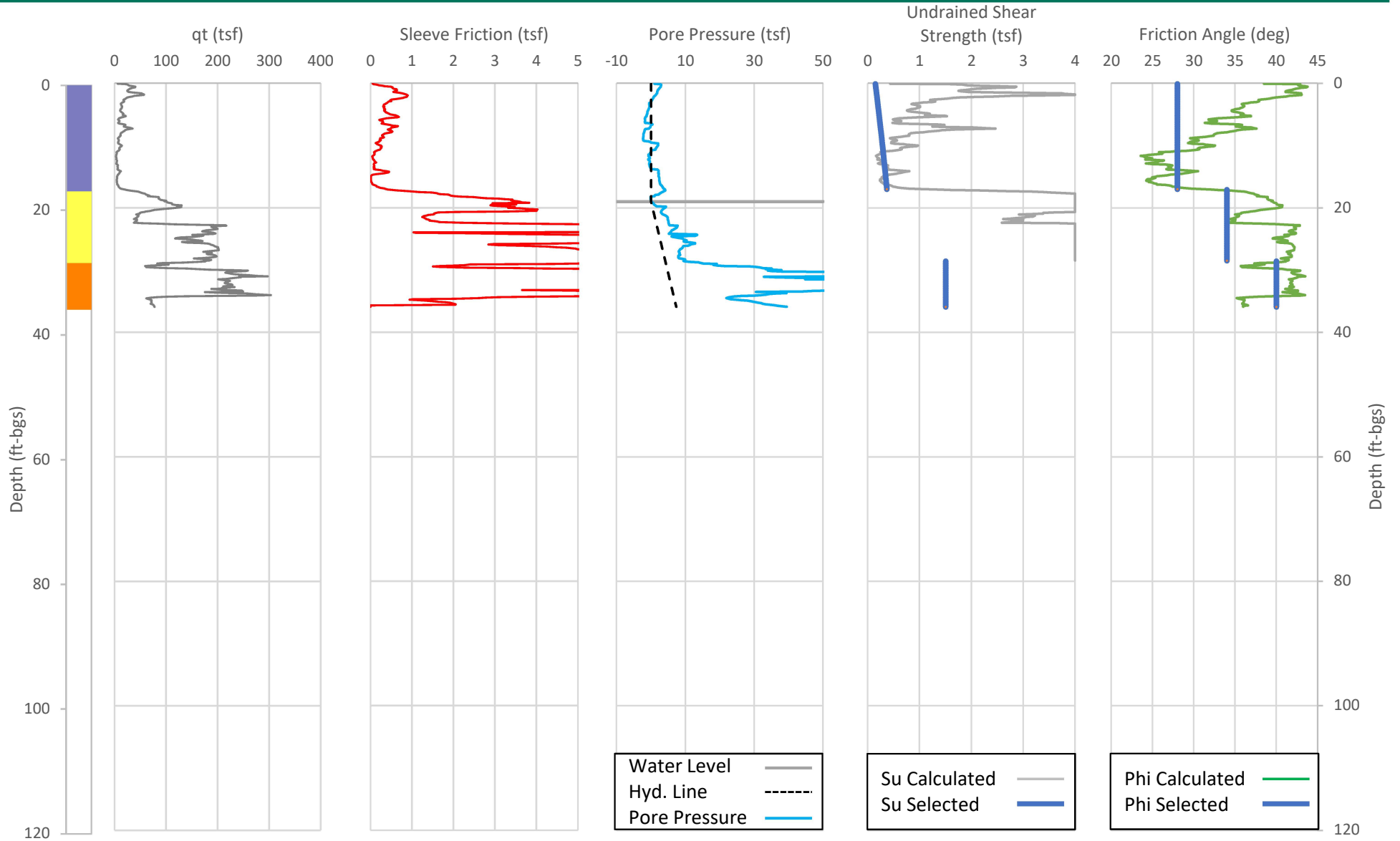


Test ID:
GS Elev. (ft-msl):
Test Depth (ft):

CPT-ABC-02
21.6
35.9

CPT Rig Type: Truck
Location: Possum Point
Groundwater Depth (ft-bgs): 19.0

Project #: 1662150
Project Name: Inactive Pond Demonstrations
Client: Dominion Energy



Dike Fill
 Coarse Grained Alluvium
 Cretaceous Sediments

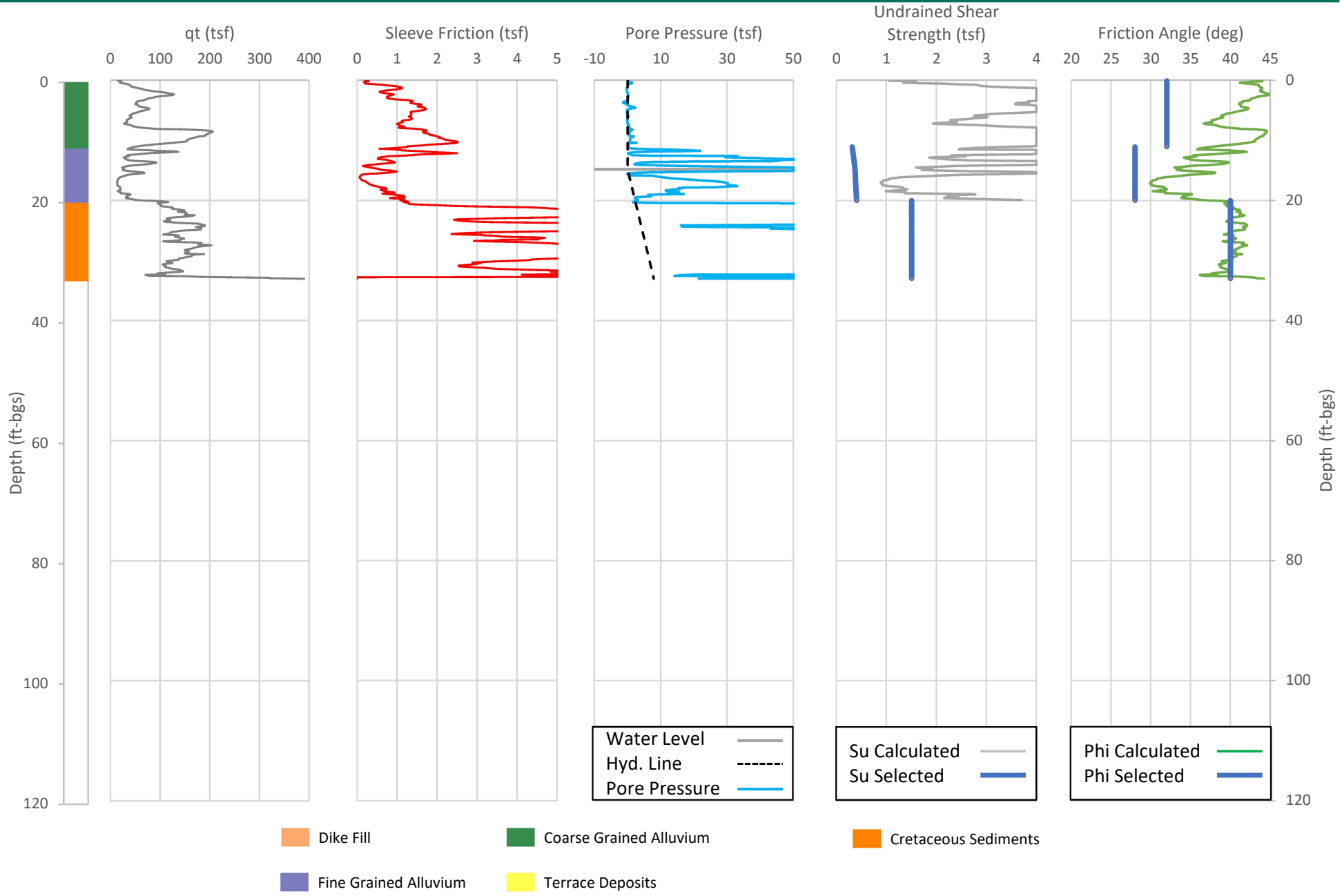
Fine Grained Alluvium
 Terrace Deposits

Test ID:
GS Elev. (ft-msl):
Test Depth (ft):

CPT-ABC-03
14.8
33.1

CPT Rig Type: Track
Location: Possum Point
Groundwater Depth (ft-bgs): 14.8

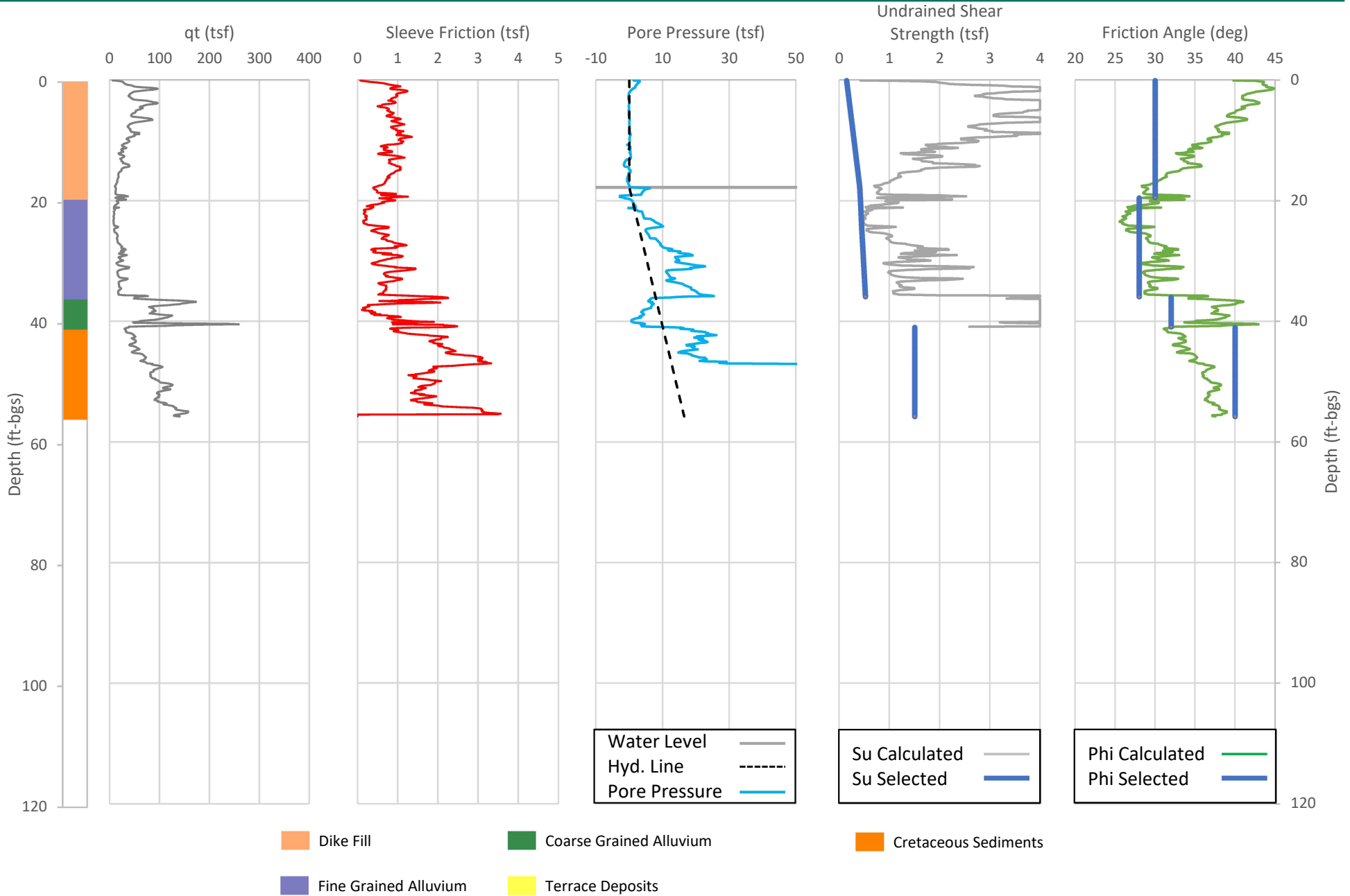
Project #: 1662150
Project Name: Inactive Pond Demonstrations
Client: Dominion Energy



Test ID: CPT-ABC-04
 GS Elev. (ft-msl): 19.0
 Test Depth (ft): 55.8

CPT Rig Type: Track
 Location: Possum Point
 Groundwater Depth (ft-bgs): 17.8

Project #: 1662150
 Project Name: Inactive Pond Demonstrations
 Client: Dominion Energy

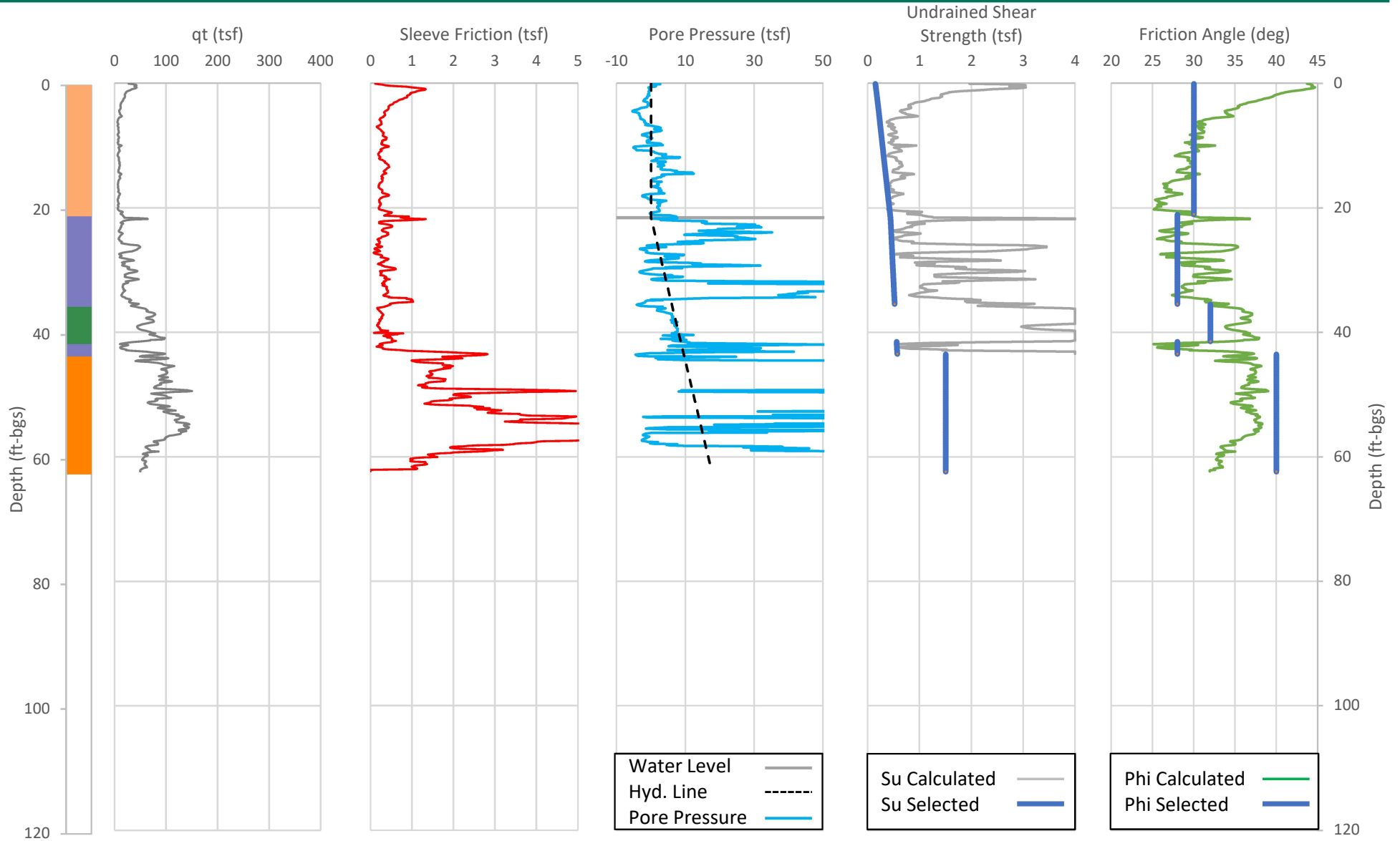


Test ID:
GS Elev. (ft-msl):
Test Depth (ft):

CPT-ABC-05
21.2
62.3

CPT Rig Type: Track
Location: Possum Point
Groundwater Depth (ft-bgs): 21.6

Project #: 1662150
Project Name: Inactive Pond Demonstrations
Client: Dominion Energy

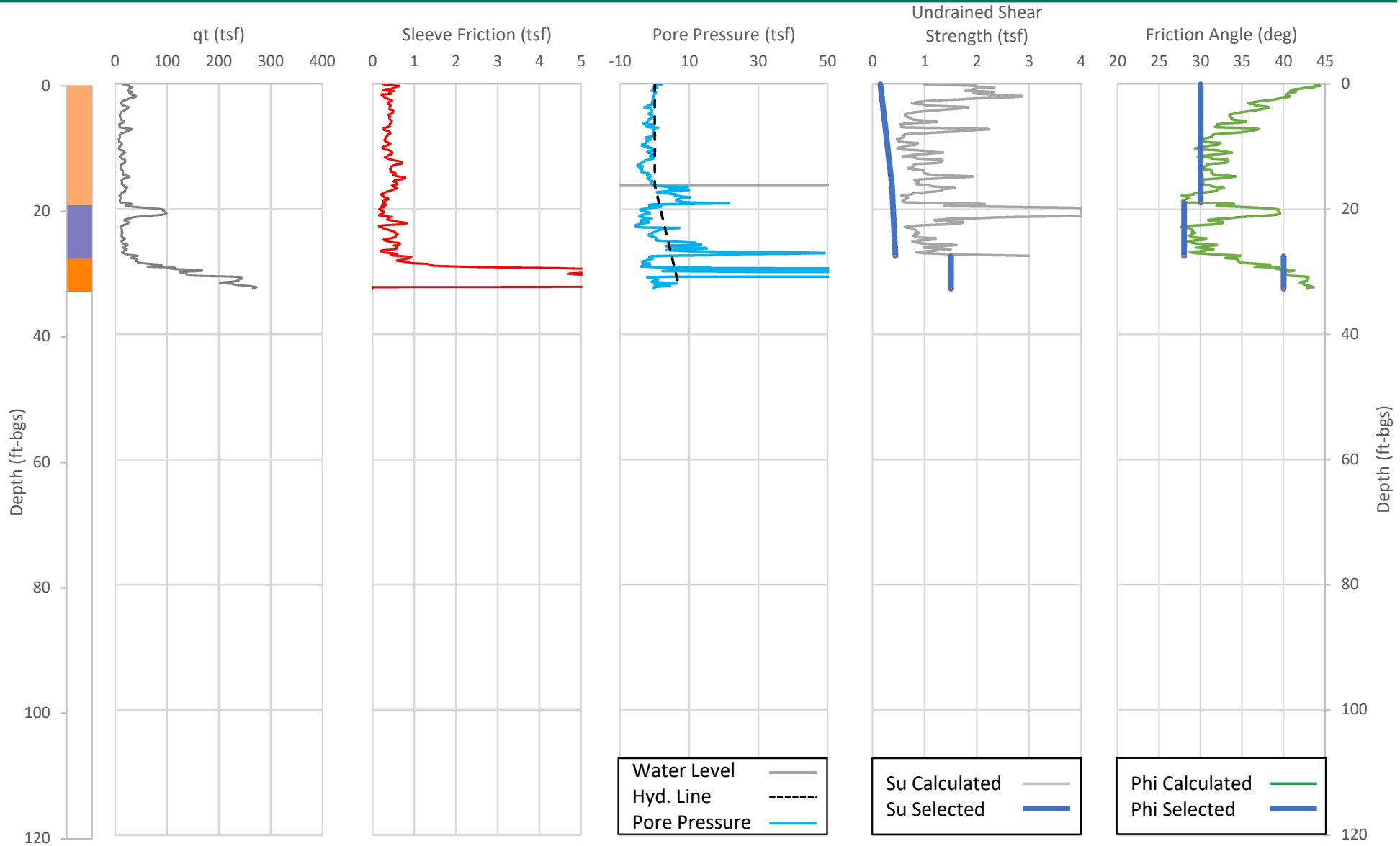


■ Dike Fill ■ Coarse Grained Alluvium ■ Cretaceous Sediments
■ Fine Grained Alluvium ■ Terrace Deposits

Test ID: CPT-ABC-06
 GS Elev. (ft-msl): 21.7
 Test Depth (ft): 32.7

CPT Rig Type: Track
 Location: Possum Point
 Groundwater Depth (ft-bgs): 16.2

Project #: 1662150
 Project Name: Inactive Pond Demonstrations
 Client: Dominion Energy



Dike Fill
 Coarse Grained Alluvium
 Cretaceous Sediments

Fine Grained Alluvium
 Terrace Deposits

ATTACHMENT 2

Seismic Hazard Calculation Package

Date:	January 9, 2018	Made by:	L. Jin
Project No.:	1662150	Checked by:	G. Martin
Subject:	Seismic Hazard Assessment	Reviewed by:	G. Hebel
Project:	POSSUM POINT PONDS ABC – INACTIVE POND DEMONSTRATION		

1.0 OBJECTIVE

This calculation package identifies and summarizes the seismic hazard at the project site located at 77.286°W and 38.547°N. The seismic hazard assessment is necessary for geotechnical design evaluations of stability under earthquake loading and liquefaction susceptibility.

2.0 SEISMIC HAZARD SUMMARY

For ash pond closures, the United State Environmental Protection Agency's (USEPA) CCR Rule has specified seismic analyses be completed for a seismic event with a 2% probability of exceedance in 50 years (2% / 50yr), equivalent to a return period of approximately 2,500 years. The United States Geological Survey (USGS) has provided online tools associated with this hazard for its 2014 seismic hazard model. The sections below detail the use of these tools to obtain seismic hazard data for use in analyses.

3.0 PEAK GROUND AND SPECTRAL ACCELERATION

The peak ground acceleration (PGA) and spectral ground accelerations (S_a) corresponding to a range of spectral periods are necessary for many engineering analyses including slope stability analysis and liquefaction analysis. For a 2% probability of exceedance (PE) in 50 years, The USGS provides a reference PGA and spectral accelerations corresponding to a reference site on the border between the National Earthquake Reductions Hazard Program (NEHRP) site classes B and C with an average shear wave velocity in the upper 30 m (V_{s30}) of 760 m/s. These reference accelerations are often referenced with a BC subscript (e.g. PGA_{BC}) and are scaled as appropriate to match site conditions and analysis input requirements. Figure 1 below shows the project site on the 2014 seismic hazard map for PGA_{BC} , and Figure 2 displays the uniform hazard response spectrum curve, which plots the reference spectral acceleration, or ground motion, for various spectral periods. The uniform hazard response spectrum curve is presented in tabular form in Table 1.



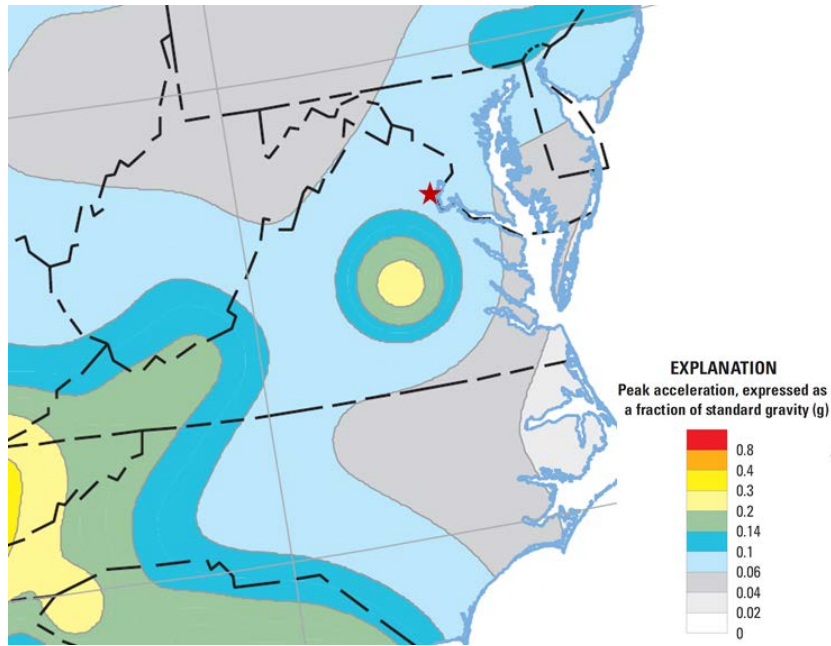


Figure 1: PGA_{BC} for the 2% PE in 50 years at the project site (red star). (USGS 2014).

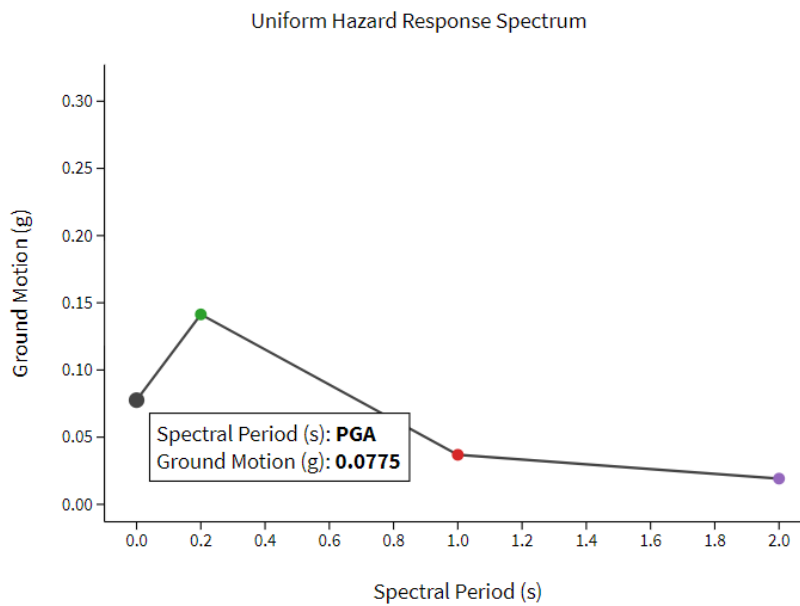


Figure 2: Uniform Hazard Response Spectrum for the 2% PE in 50 years Seismic Hazard at the Project Site (USGS 2014).

Table 1: Reference site (BC) PGA and Spectral Acceleration for the 2% PE in 50 year Seismic Hazard at the Project Site (USGS 2014).

Spectral Period (s)	Acceleration, BC (g)
0 (PGA)	0.0775
0.2	0.1414
1.0	0.0369
2.0	0.0192

3.1 Seismic Hazard Deaggregation

The seismic hazard is compiled from multiple predictive models which consider many seismic sources of varying combinations of earthquake magnitude and distance from the project site. For each magnitude and distance pair, models predict the resulting accelerations and activity rates for the project site. The results of these predictive models are aggregated to produce the seismic hazard model for specified return periods. The seismic hazard model can be deaggregated to obtain the contribution to hazard percentage of each magnitude and distance combination. This information is necessary for analyzes requiring earthquake magnitude (e.g. liquefaction susceptibility) or distance. Figure 3 below displays a deaggregation plot of the PGA_{BC} at the project site for a 2% PE in 50 years with descriptive statistics available through the USGS online tools.

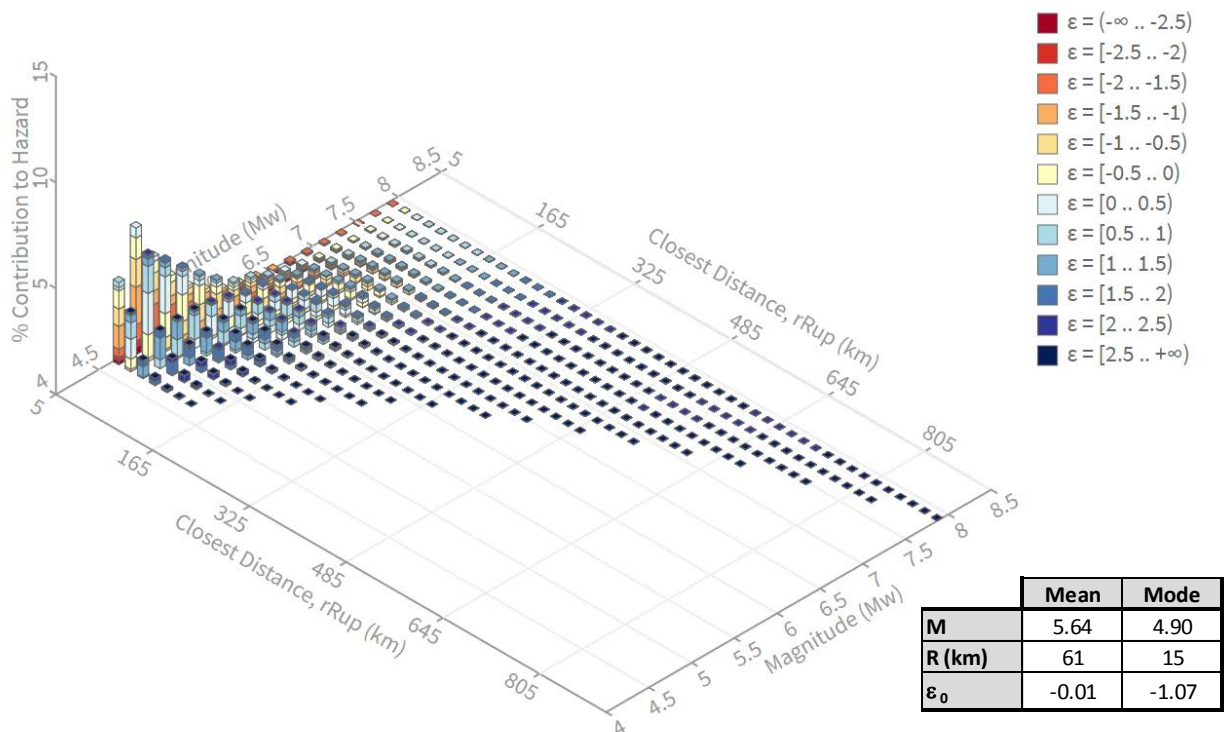


Figure 3: Deaggregation Plot of the PGA_{BC} at the Project Site for a 2% PE in 50 Years

3.2 Design Earthquake Magnitude

Some seismic analysis methods require a design earthquake magnitude as an input. One such analysis is the liquefaction screening method. Based on its application in the liquefaction screening, a design earthquake magnitude of 5.50 was selected. Additional details on the design earthquake magnitude are available in the Liquefaction Assessment Calculation Package. This design earthquake magnitude was used in all analyses for consistency.

4.0 DETERMINATION OF SITE-SPECIFIC PEAK GROUND ACCELERATION

For liquefaction analysis, the site-specific peak ground acceleration at the surface, a_{max} , was calculated from the site reference peak ground acceleration (PGA_{BC}). The PGA_{BC} was multiplied by an amplification factor calculated from the average shear wave velocity in the upper 30 meters (V_{s30}) to obtain a representative a_{max} . The shear wave velocity was directly measured every meter in one CPT (CPT-ABC-01), and a representative shear wave velocity was derived from these measurements. Figure 4 shows the measured shear wave velocities and the representative shear wave velocity profile. The V_{s30} (listed in Table 2) was calculated from the representative profile to be 1164 ft/s.

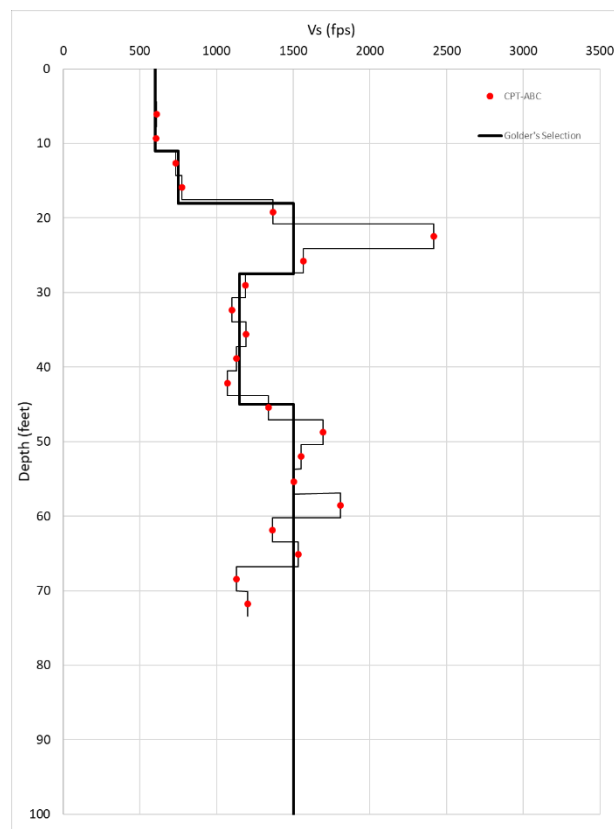


Figure 4. Shear wave velocity profile for Pond ABC

Table 2: Representative Shear Wave Velocity in the Upper 30 m (Vs30)

Pond ID	Vs30 (ft/s)	Vs30 (m/s)
ABC	1164	355

4.1 Determination of site coefficient F_a

An amplification factor was evaluated from two sources:

- Atkinson and Boore's 2006 publication on earthquake ground-motion prediction equations for Eastern North America
- the International Building Code (IBC, 2012)

Atkinson and Boore's publication provides a site response term which is used to amplify the PGA_{BC} , and the IBC provides a site coefficient F_a (amplification factor) as well. Amplification factors from these two sources were averaged to obtain a representative amplification factor.

Table 3: Site coefficient F_a

Pond ID	Atkinson and Boore (2006)	IBC (2012)	Selected for Analysis
ABC	1.36	1.41	1.39

4.2 Site-specific peak ground acceleration a_{max}

$$a_{max} = PGA_{BC} * F_a = 0.0775g * 1.39 = 0.11 g \quad (1)$$

With an amplification factor F_a of 1.39, Golder calculated the site-specific peak ground acceleration a_{max} to be 0.11 g for the considered seismic hazard.

Table 4: a_{max} at Pond E, Possum Point

Pond ID	a_{max}
ABC	0.11 g

5.0 PSEUDOSTATIC COEFFICIENT

For slope stability analyses, Golder used the Bray and Travararou (2009) screening method which models the seismic loading using a pseudostatic coefficient (k). This section details the calculation of the pseudostatic coefficient for the project site. Details on the slope stability analysis are available in a separate calculation package.

Stability under seismic conditions is calculated using the pseudo-static method to model horizontal seismic forces as the product of a seismic coefficient (k) and the weight of the sliding mass. Bray and Travararou (2009) proposed screening methodology to determine the seismic coefficient k based on the degraded period of the sliding mass and an allowable seismic displacement threshold. The screening method includes

an equation to calculate the pseudostatic coefficient for periods of 0.2 and 0.5 seconds, which encompasses the range of typical slope periods. A period of 0.2 s is more conservative, so for this analysis, Golder used the equation associated with a period of 0.2 s and an allowable seismic displacement of 15 cm:

$$k_{15\text{ cm}} = (0.036M_w - 0.004)S_a - 0.030 > 0.0, \text{ for } S_a = S_a(T = 0.2\text{ s}) < 2.0\text{ g} \quad (2)$$

Where, $k_{15\text{ cm}}$ = pseudostatic coefficient

M_w = Design Earthquake Magnitude

S_a = Spectral acceleration at the base of the sliding mass

As noted in Section 3.0, the BC spectral acceleration at a period of 0.2 s is 0.1414 g. This value is multiplied by an amplification factor to obtain the acceleration at the base of the sliding mass. Golder used an amplification factor of 1.6 as prescribed by the international building code (IBC 2012) for a site class D. The project site was classified as D according to the representative shear wave velocity in the upper 30 meters or 100 feet (V_{s30}). Thus, the spectral acceleration S_a used in the equation is 0.226 g (0.1414g x 1.6). The pseudostatic coefficient was calculated to be 0.01g as shown in the table below.

Table 5: $k_{15\text{ cm}}$ at Pond E, Possum Point

Pond ID	$k_{15\text{ cm}}$
ABC	0.01 g

6.0 REFERENCE

Atkinson, G.M. and D.M. Boore (2006) "Earthquake Ground-Motion Prediction Equations for Eastern North America," Bulletin of the Seismological Society of America, Vol. 96, No. 6, pp. 2181-2205.

Bray, J.D., and Travararou, T. (2009). Pseudostatic Coefficient for Use in Simplified Seismic Slope Stability Evaluation. Journal of Geotechnical and Geoenvironmental Engineering, Vol. 135, No. 9: pp. 1336-1340.

United States Geologic Survey (2018), Unified Hazard Tool. Accessed January 9, 2018.
<https://earthquake.usgs.gov/hazards/interactive/>.

International Code Council, Inc. (2012), "2012 International Building Code", Section 1613.3

ATTACHMENT 3

Liquefaction Assessment Calculation Package

Date:	March 7 2018	Made by:	L. Jin
Project No.:	1662150	Checked by:	G. Martin
Subject:	Liquefaction Assessment	Reviewed by:	G. Hebeler
Project:	POSSUM POINT PONDS ABC – INACTIVE POND DEMONSTRATION		

1.0 OBJECTIVE

The objective of this calculation is to assess the liquefaction potential of the foundation soils and dikes surrounding Ponds ABC at Dominion Energy's Possum Point Power Station in Dumfries, VA.

Liquefaction potential is assessed for the final closure condition of the ponds.

This liquefaction assessment uses the screening-level assessment described in Youd et al. (2001). Cone Penetration Test (CPT) data is used to characterize soils for this assessment with updates suggested by Robertson (2009).

2.0 LIQUEFACTION ASSESSMENT METHODOLOGY

Seismically-induced liquefaction susceptibility was evaluated using the National Center for Earthquake Engineering Research (NCEER) simplified procedure with CPT data (Youd et al., 2001). The simplified procedure is an empirical method used to calculate the factor of safety against liquefaction. The factor of safety is defined as a ratio of the cyclic resistance ratio (CRR) to the cyclic stress ratio (CSR). The CRR is a measure of a soils' resistance to liquefaction and was estimated using CPT data. The CSR is a measure of the seismic demand on the soil and was estimated using seismic hazard assessment resources provided by the United States Geologic Survey (USGS) as described in Golder's Seismic Hazard Assessment package.

2.1 CSR Determination

The CSR is defined as:

$$CSR = \frac{\tau_{ave}}{\sigma'_v} = 0.65 \left(\frac{a_{max}}{g} \right) \left(\frac{\sigma_v}{\sigma'_v} \right) r_d$$

where a_{max} is the peak horizontal acceleration at the ground surface, g is the acceleration due to gravity, σ_v is the total vertical overburden stress, σ'_v is the effective vertical overburden stress, and r_d is a depth-dependent stress reduction factor defined as:

$$r_d = 1.0 - 0.00765z \quad \text{for } z \leq 9.15 \text{ m}$$

$$r_d = 1.174 - 0.0267z \quad \text{for } 9.15 \text{ m} < z \leq 23 \text{ m}$$



$$r_d = 0.744 - 0.008z \quad \text{for } 23 \text{ m} < z \leq 30 \text{ m}$$

$$r_d = 0.50 \quad \text{for } z > 30 \text{ m}$$

where z is the depth in meters (m). The determination of the a_{\max} (0.11 g) is provided in the Golder's Seismic Hazard Calculation Package.

2.2 CRR Determination

The second major step in assessing the liquefaction susceptibility using the simplified approach is to estimate the CRR. Robertson and Wride (1998) developed the procedure for calculating CRR from the CPT as a function of the “clean sand” cone penetration resistance normalized to 1 atmosphere (atm; approximately 100 kilopascals; kPa) and given as $(q_{c1N})_{cs}$. The CRR is based on an earthquake magnitude of 7.5 and a magnitude scaling factor (MSF) adjusts the CRR for magnitudes other than 7.5.

The CRR for an earthquake magnitude (M) of 7.5 is given as:

$$(q_{c1N})_{cs} < 50 \quad CRR_{7.5} = 0.833 \left[\frac{(q_{c1N})_{cs}}{1000} \right] + 0.05$$

$$50 \leq (q_{c1N})_{cs} < 160 \quad CRR_{7.5} = 93 \left[\frac{(q_{c1N})_{cs}}{1000} \right]^3 + 0.08$$

where $(q_{c1N})_{cs}$ is the clean sand cone penetration resistance normalized to 1 atm (approximately 100 kPa or 1 ton per square foot; tsf).

The tip resistance (q_c) is normalized to obtain q_{c1N} as:

$$q_{c1N} = C_Q \left(\frac{q_c}{P_a} \right)$$

$$C_Q = \left(\frac{P_a}{\sigma'_v} \right)^n$$

where C_Q is the normalizing factor for cone penetration resistance, P_a is 1 atm of pressure, n is an exponent that is dependent on the soil type, and q_c is the cone tip penetration resistance (q_c is replaced by q_t the cone tip resistance corrected for geometric impacts of the pore pressure measurement in all instances).

The method adopted in this assessment calculates the exponent, n , according to a method developed by Robertson (2009) and represents a small modification from the standard NCEER approach. The exponent, n , is calculated as:

$$n = 0.381I_c + 0.05 \left(\frac{\sigma'_{vo}}{P_a} \right) - 0.15 \leq 1.0$$

where

$$I_c = [(3.47 - \log Q_{t1})^2 + (1.22 + \log F_r)^2]^{0.5}$$

$$Q_{t1} = \left[\frac{q_c - \sigma_{vo}}{\sigma'_{vo}} \right]$$

$$F_r = \left[\frac{f_s}{q_c - \sigma_{vo}} \right] \times 100\%$$

2.2.1 Clean Sand Equivalent Cone Penetration Resistance ($(q_{c1N})_{cs}$)

According to the NCEER approach, the presence of fines affects the liquefaction resistance of soils. A correction factor, K_c , is applied to the normalized penetration resistance (q_{c1N}) to determine the clean sand equivalent $(q_{c1N})_{cs}$ where

$$(q_{c1N})_{cs} = K_c q_{c1N}$$

$$\text{for } I_c \leq 1.64 \quad K_c = 1.0$$

$$\text{for } I_c > 1.64 \quad K_c = -0.403I_c^4 + 5.581I_c^3 - 21.63I_c^2 + 33.75I_c - 17.88$$

2.2.2 Magnitude Scaling Factor (MSF)

The magnitude scaling factor (MSF) adjusts the CRR for magnitudes other than 7.5 (Youd et al. 2001) where the factor of safety against liquefaction is calculated as

$$FS = \frac{CRR_{7.5}}{CSR} \times MSF$$

A number of different MSF values are discussed in the NCEER approach. The MSF values used in this assessment are the revised Idriss values (which are considered a lower bound set of values), and are calculated as:

$$MSF = \frac{10^{2.24}}{M^{2.56}}$$

Where M is the design earthquake magnitude.

A probabilistic seismic hazard analysis was used to estimate the ground acceleration, and while such an analysis includes the aggregate contributions of all possible combinations of magnitude and distance from all sources, a design earthquake magnitude is not specified in the probabilistic tools provided by the USGS.

The simplified approach requires the selection of a single earthquake magnitude. Since liquefaction is sensitive to ground motion duration, which is correlated to earthquake magnitude, this selection is an important issue in liquefaction assessments.

The selection of either the mean or modal magnitude produces inconsistent risks of liquefaction because the relationship between duration (represented by magnitude) and liquefaction potential is non-linear. Kramer (2008) suggests that the best way to handle this issue is to perform liquefaction calculations for all magnitudes and to weight the results according to the relative contribution of each magnitude.

Golder has implemented this approach by recognizing that the MSF is the only term in the simplified approach that is affected by the magnitude selection. Golder calculated a weighted-average MSF (weighted by the relative contribution of each magnitude) and then calculated the magnitude corresponding to that MSF.

Golder calculated the earthquake magnitude to be 5.50. This value is less than the mean magnitude (5.64), and is greater than the modal magnitude (4.90).

2.3 Factor of Safety Against Liquefaction

The factor of safety against liquefaction was calculated as:

$$FS = \frac{CRR_{7.5}}{CSR} \times MSF$$

The factor of safety was calculated for every recorded depth reading in each CPT. Liquefaction calculations for each CPT including the calculated factors of safety are graphically presented in the figures attached to the end of this text.

3.0 RESULTS AND CONCLUSIONS

The USEPA's 2015 Final Rule on the Disposal of Coal Combustion Residuals (CCR, EPA Rule) specify a required factor of safety of 1.2 against liquefaction for pond impoundment structures in section § 257.73(e)(iv). The dikes and foundation soils at Possum Point's Ponds ABC meet this requirement as all calculated factors of safety against liquefaction for both dike and foundation materials are in excess of 1.2 for all CPT soundings analyzed.

4.0 REFERENCES

Atkinson, G.M. and D.M. Boore (2006) "Earthquake Ground-Motion Prediction Equations for Eastern North America," *Bulletin of the Seismological Society of America*, Vol. 96, No. 6, pp. 2181-2205.

Kramer, S.L. (2008). "Evaluation of Liquefaction Hazards in Washington State" Final Research report WA-RD 668.1, December 2008.

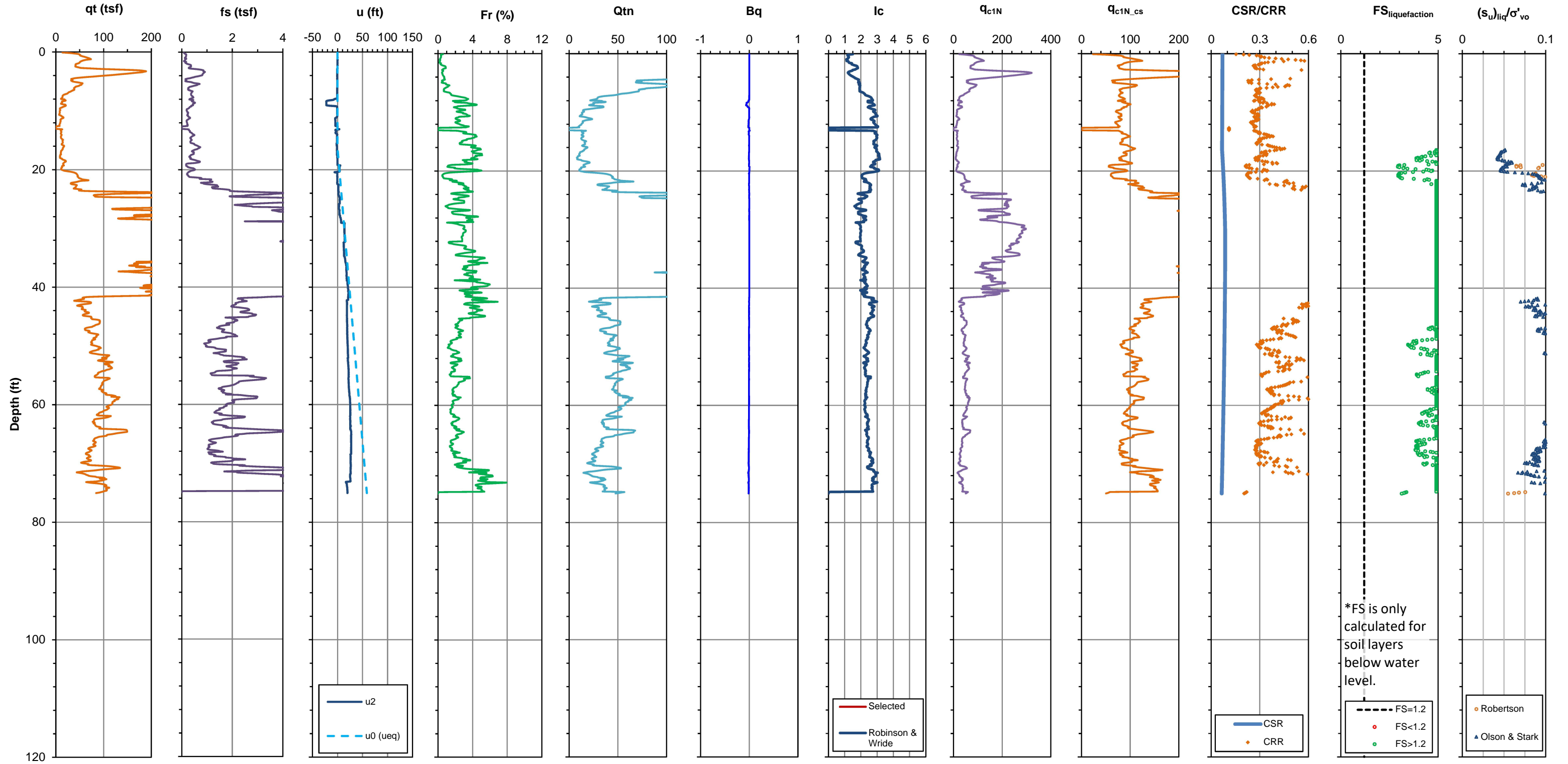
Robertson, P.K. and C.E. (Fear) Wride (1998) "Evaluating Cyclic Liquefaction Potential Using the Cone Penetration Test," *Canadian Geotechnical Journal*, Vol. 35, pp. 442-459.

Youd, T.L. et al. (2001). "Liquefaction Resistance of Soils: Summary Report from the 1996 NCEER and 1998 NCEER/NSF workshops on Evaluation of Liquefaction Resistance of Soils", *Journal of Geotechnical and Geoenvironmental Engineering*, vol. 127, No. 4, April 2001.

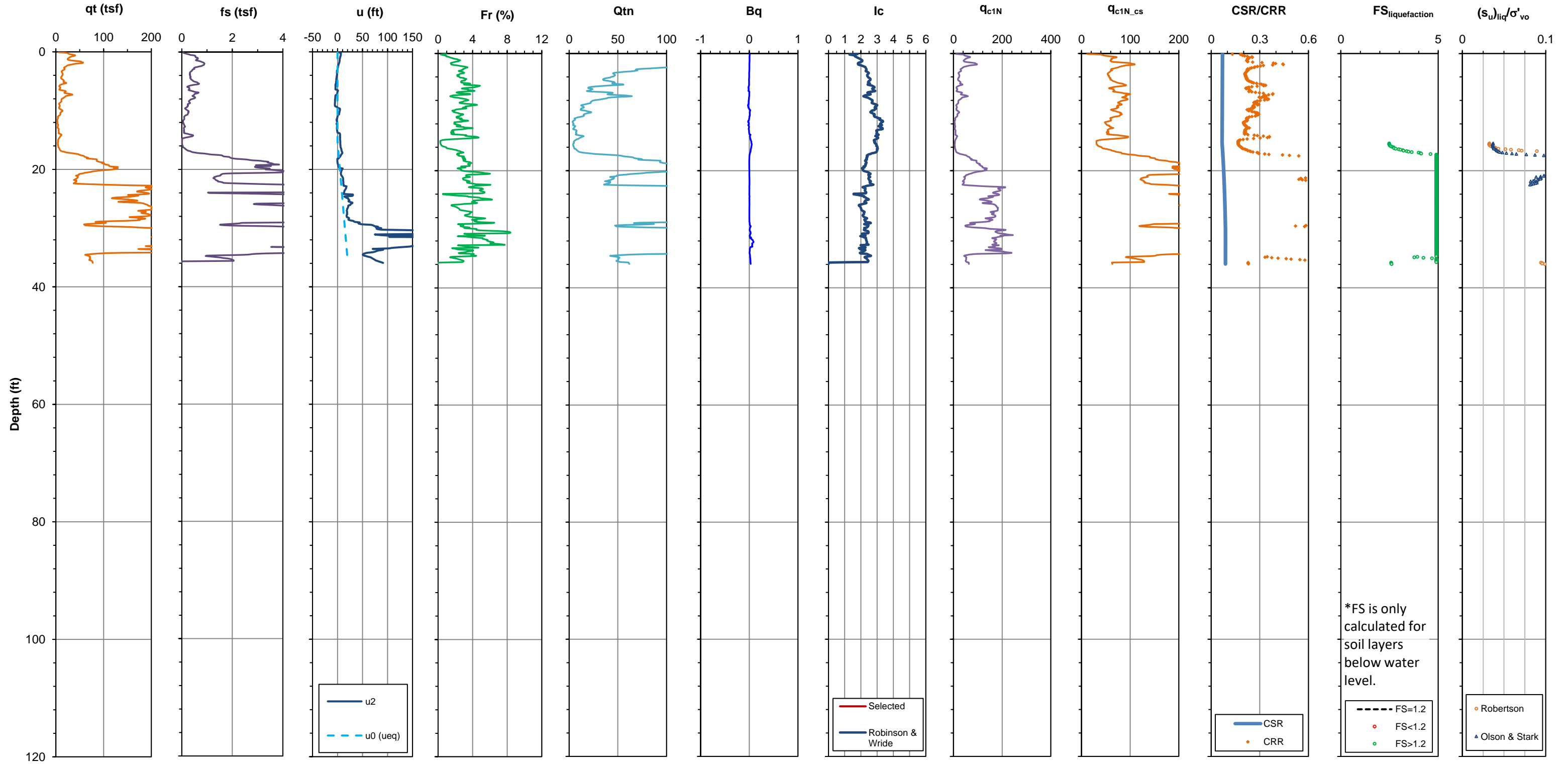
5.0 ATTACHMENTS

Liquefaction Factor of Safety Results

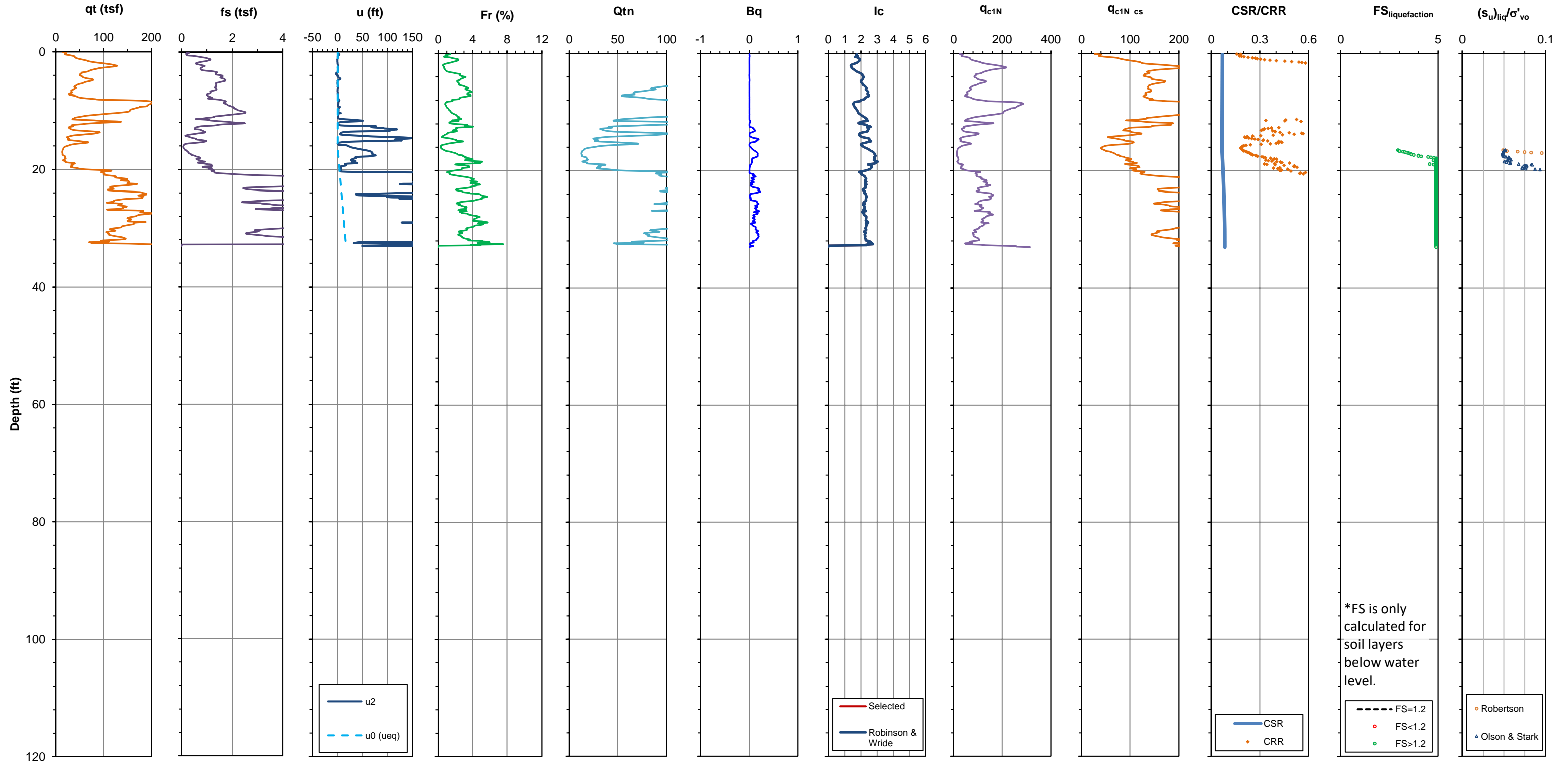
Test Date: 12/19/2017	Project: Possum Point Pond ABC	Test Type: CPTU	Water Table: 16.4 ft	2% PE in 50 years Seismic Hazard
Test ID: CPT-ABC-01	Location: Dumfries, VA	Device: 10 cm ² , Type 2 filter	Golder Eng: LJ	Magnitude: 5.5
Latitude: 38.5	Client: Dominion Energy	Standard: ASTM D5778	Check: JGM	a_{max}: 0.11 g
Longitude: -77.3	Proj No.: 1662150	Push Co.: ConeTec	Review:	
Elevation: 21.3 ft	Termination: 60.2 ft-bgs	Operator: 0		



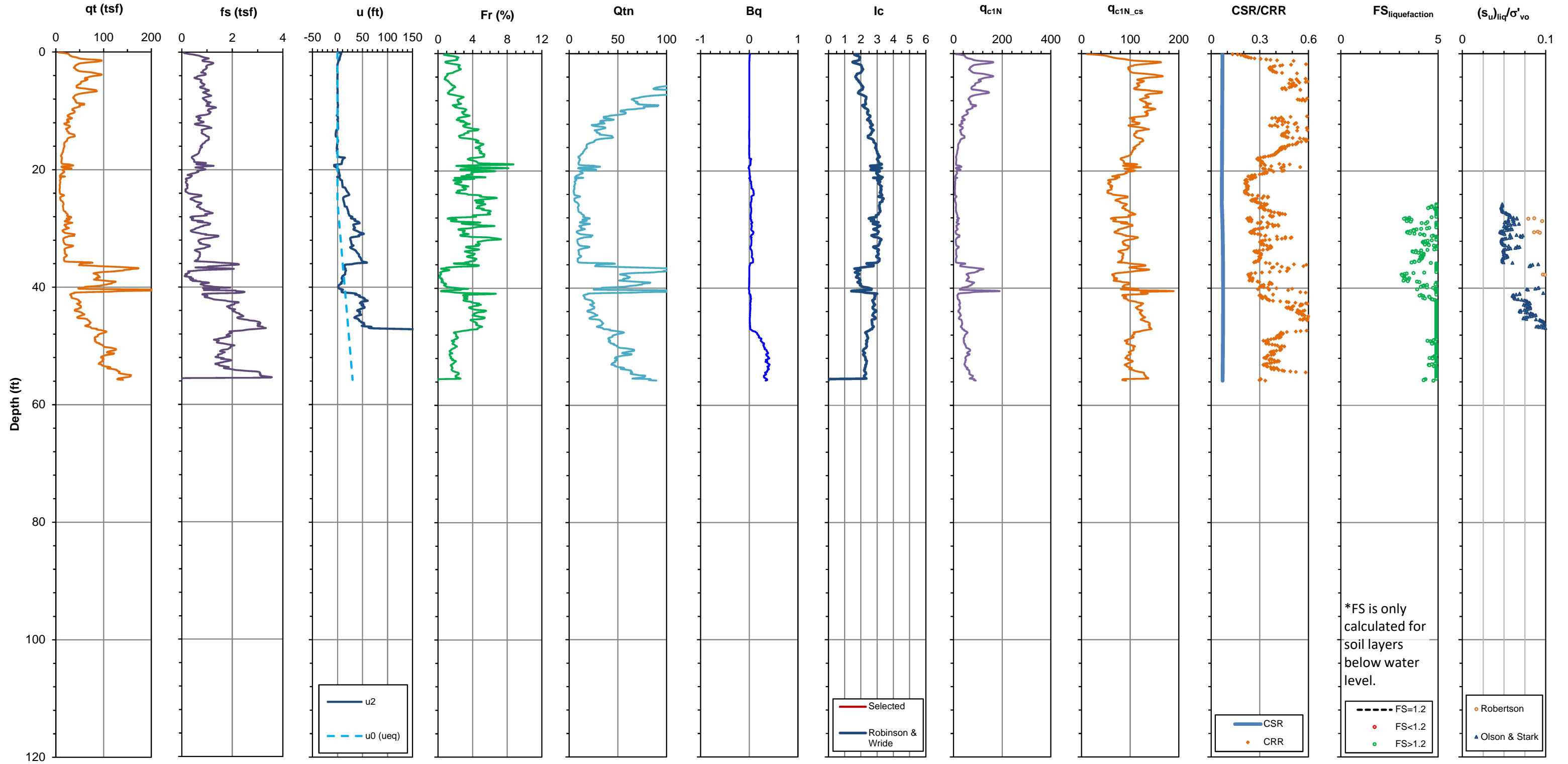
Test Date: 12/19/2017	Project: Possum Point Pond ABC	Test Type: CPTU	Water Table: 15.3 ft	2% PE in 50 years Seismic Hazard
Test ID: CPT-ABC-02	Location: Dumfries, VA	Device: 10 cm ² , Type 2 filter	Golder Eng: LJ	Magnitude: 5.5
Latitude: 38.5	Client: Dominion Energy	Standard: ASTM D5778	Check: JGM	a_{max}: 0.11 g
Longitude: -77.3	Proj No.: 1662150	Push Co.: ConeTec	Review:	
Elevation: 21.6 ft	Termination: 60.2 ft-bgs	Operator: 0		



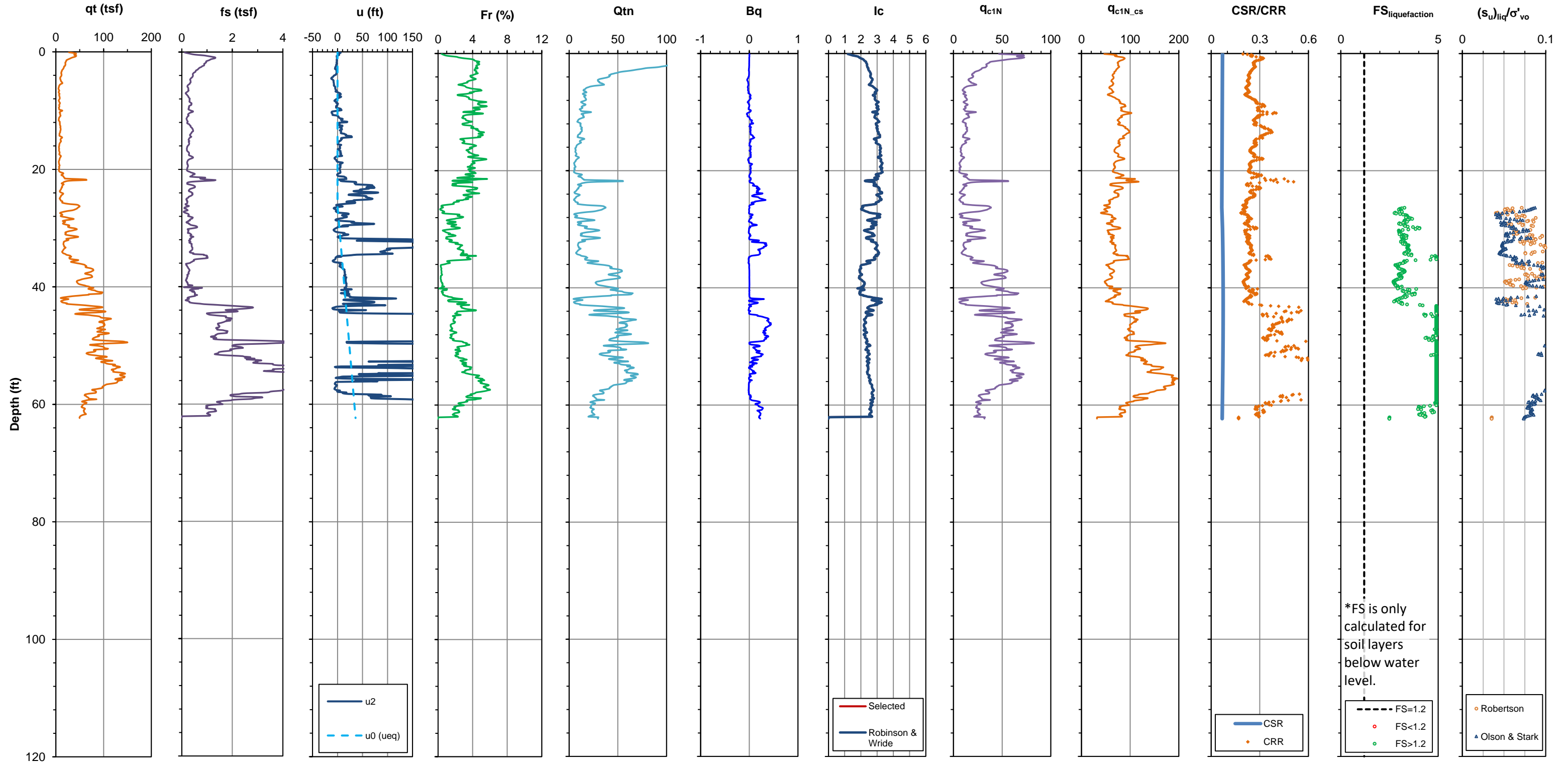
Test Date: 12/20/2017	Project: Possum Point Pond ABC	Test Type: CPTU	Water Table: 16.4 ft	2% PE in 50 years Seismic Hazard
Test ID: CPT-ABC-03	Location: Dumfries, VA	Device: 10 cm ² , Type 2 filter	Golder Eng: LJ	Magnitude: 5.5
Latitude: 38.5	Client: Dominion Energy	Standard: ASTM D5778	Check: JGM	a_{max}: 0.11 g
Longitude: -77.3	Proj No.: 1662150	Push Co.: ConeTec	Review:	
Elevation: 14.8 ft	Termination: 60.2 ft-bgs	Operator: 0		



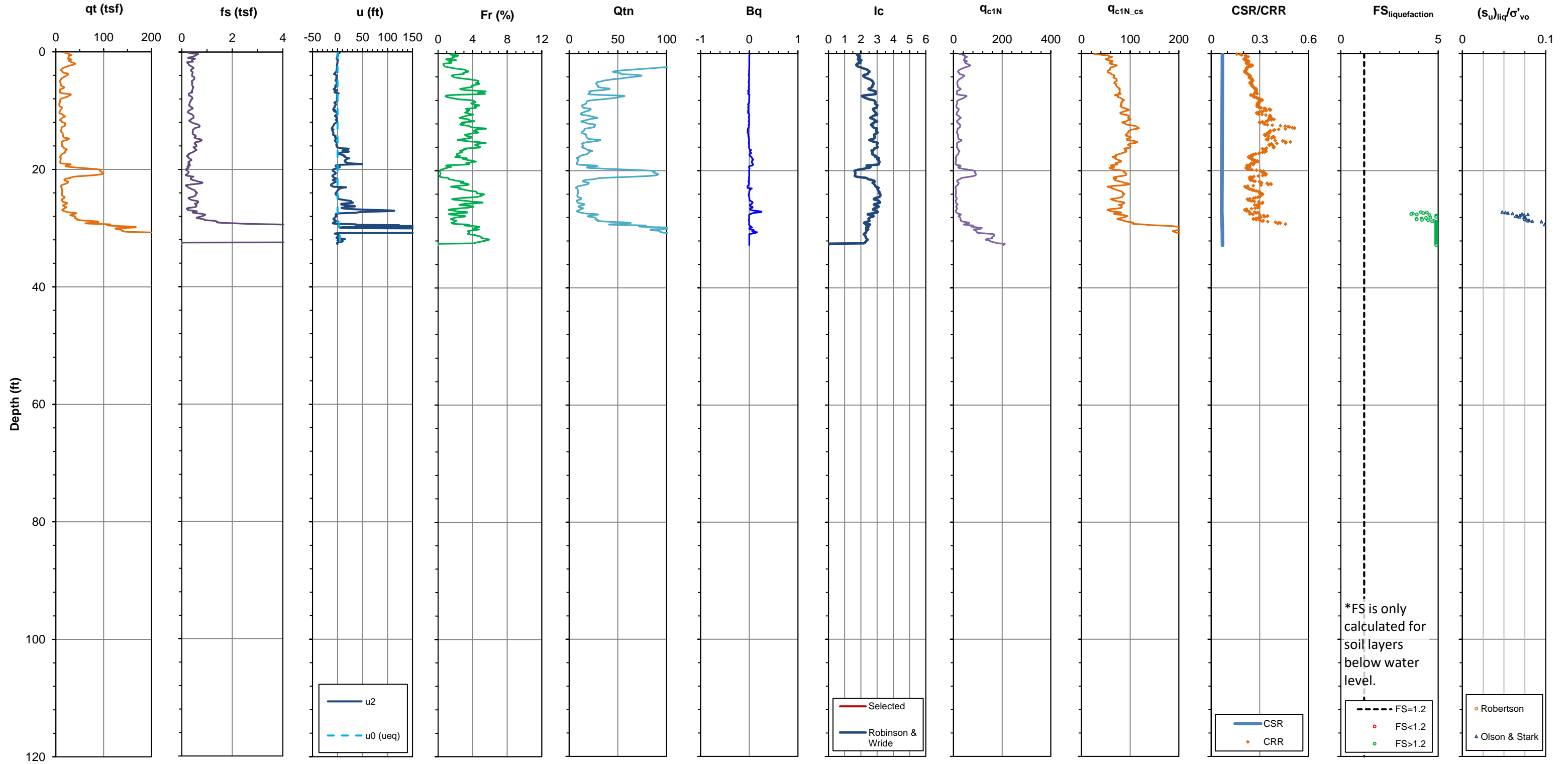
Test Date: 12/20/2017	Project: Possum Point Pond ABC	Test Type: CPTU	Water Table: 25.6 ft	2% PE in 50 years Seismic Hazard
Test ID: CPT-ABC-04	Location: Dumfries, VA	Device: 10 cm ² , Type 2 filter	Golder Eng: LJ	Magnitude: 5.5
Latitude: 38.5	Client: Dominion Energy	Standard: ASTM D5778	Check: JGM	a_{max}: 0.11 g
Longitude: -77.3	Proj No.: 1662150	Push Co.: ConeTec	Review:	
Elevation: 19.0 ft	Termination: 60.2 ft-bgs	Operator: 0		



Test Date: 12/20/2017	Project: Possum Point Pond ABC	Test Type: CPTU	Water Table: 26.3 ft	2% PE in 50 years Seismic Hazard
Test ID: CPT-ABC-05	Location: Dumfries, VA	Device: 10 cm ² , Type 2 filter	Golder Eng: LJ	Magnitude: 5.5
Latitude: 38.5	Client: Dominion Energy	Standard: ASTM D5778	Check: JGM	a_{max}: 0.11 g
Longitude: -77.3	Proj No.: 1662150	Push Co.: ConeTec	Review:	
Elevation: 21.2 ft	Termination: 60.2 ft-bgs	Operator: 0		



Test Date: 12/20/2017	Project: Possum Point Pond ABC	Test Type: CPTU	Water Table: 27.0 ft	2% PE in 50 years Seismic Hazard
Test ID: CPT-ABC-06	Location: Dumfries, VA	Device: 10 cm ² , Type 2 filter	Golder Eng: LJ	Magnitude: 5.5
Latitude: 38.5	Client: Dominion Energy	Standard: ASTM D5778	Check: JGM	a_{max}: 0.11 g
Longitude: -77.3	Proj No.: 1662150	Push Co.: ConeTec	Review:	
Elevation: 21.7 ft	Termination: 60.2 ft-bgs	Operator: 0		



ATTACHMENT 4

Stability Figures

FIGURE 1

Stability Analysis Cross Section Location Plan



LEGEND

	EXISTING CONTOURS, REF 1
	EXISTING CONTOURS, REF 2
	EXISTING UNPAVED ROAD
	EXISTING PAVED ROAD
	EXISTING EDGE OF WATER
	EXISTING STRUCTURE
	GOLDER CPT

- REFERENCE**
1. TOPOGRAPHY PROVIDED BY MCKENZIE SNYDER, INC., DATED APRIL 28, 2017.
 2. TOPOGRAPHY PROVIDED BY GAI CONSULTANTS, DATED FEBRUARY 27, 2015.



CLIENT
DOMINION ENERGY

PROJECT
POSSIUM POINT - POND ABC
INACTIVE POND DEMONSTRATION

TITLE
**POND ABC - GEOTECHNICAL
STABILITY SECTION LOCATIONS PLAN**

CONSULTANT	YYYY-MM-DD	2018/02/09
	DESIGNED	OAE
	PREPARED	RMS
	REVIEWED	JGM
	APPROVED	GLH



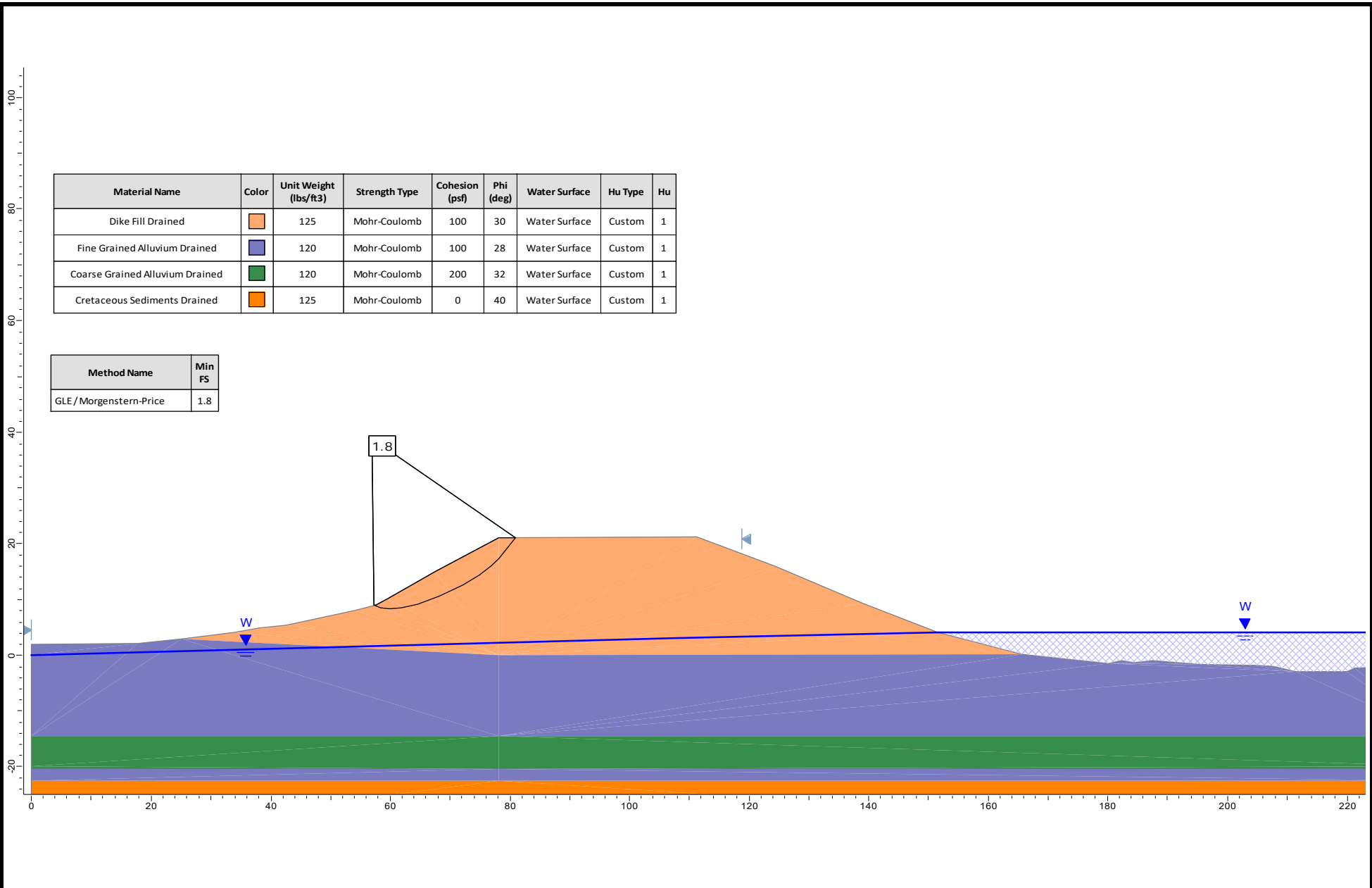
PROJECT NO. 1662150 CONTROL REV. --- FIGURE 1

Path: \\utah\cadd\dominon\1662150_Possium_Pond\PRODUCTION\GEOTECHNICAL_INVESTIGATION_1 File Name: 1662150.GEOTECH_INVESTIGATION.dwg

IF THIS MEASUREMENT DOES NOT MATCH WHAT IS SHOWN, THE SHEET SIZE HAS BEEN MODIFIED FROM ANSIB


FIGURES 2 – 5

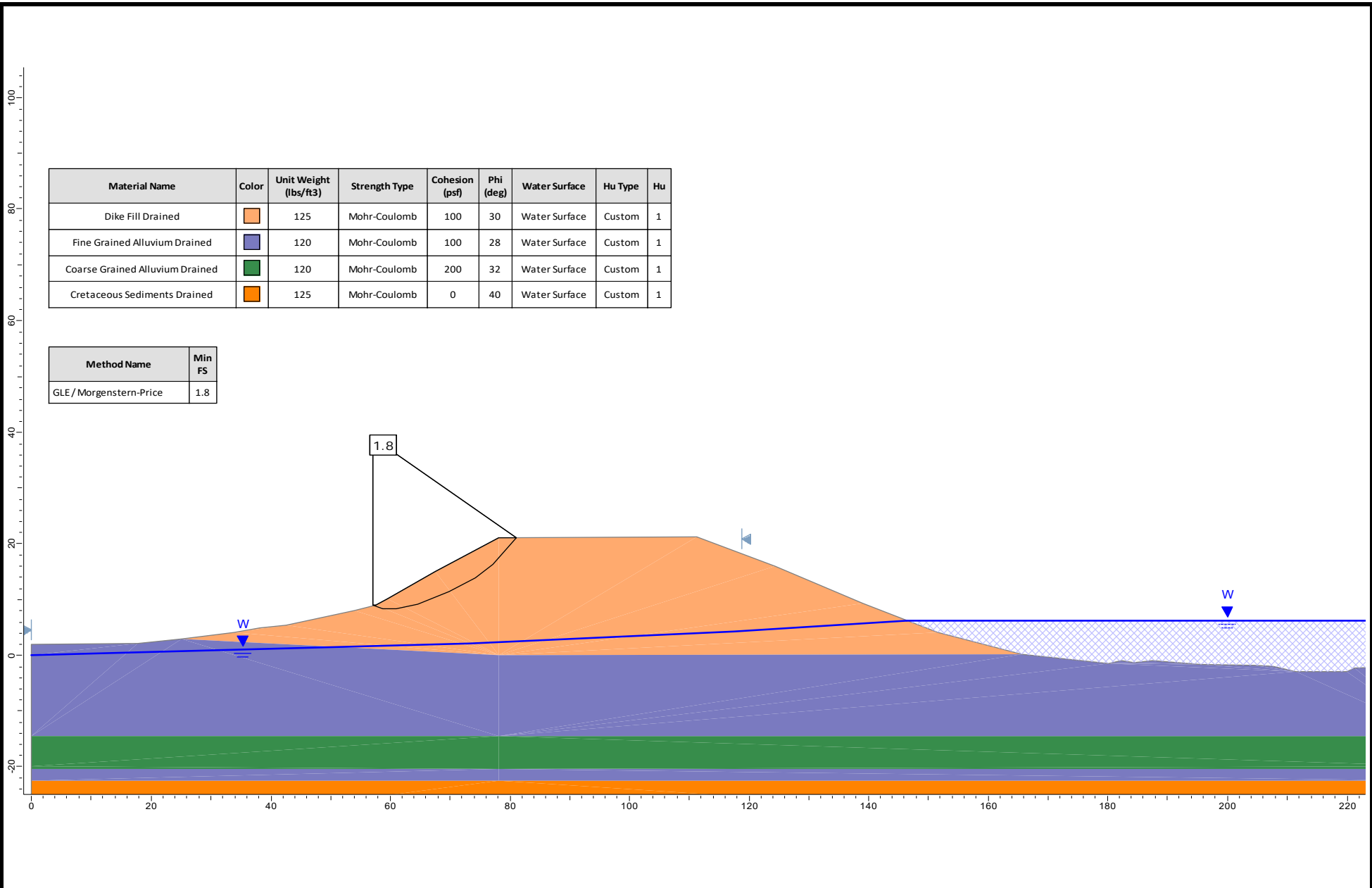
Existing Conditions Stability Assessment Results



Material Name	Color	Unit Weight (lbs/ft3)	Strength Type	Cohesion (psf)	Phi (deg)	Water Surface	Hu Type	Hu
Dike Fill Drained	Orange	125	Mohr-Coulomb	100	30	Water Surface	Custom	1
Fine Grained Alluvium Drained	Blue	120	Mohr-Coulomb	100	28	Water Surface	Custom	1
Coarse Grained Alluvium Drained	Green	120	Mohr-Coulomb	200	32	Water Surface	Custom	1
Cretaceous Sediments Drained	Orange	125	Mohr-Coulomb	0	40	Water Surface	Custom	1


Method Name	Min FS
GLE/Morgenstern-Price	1.8

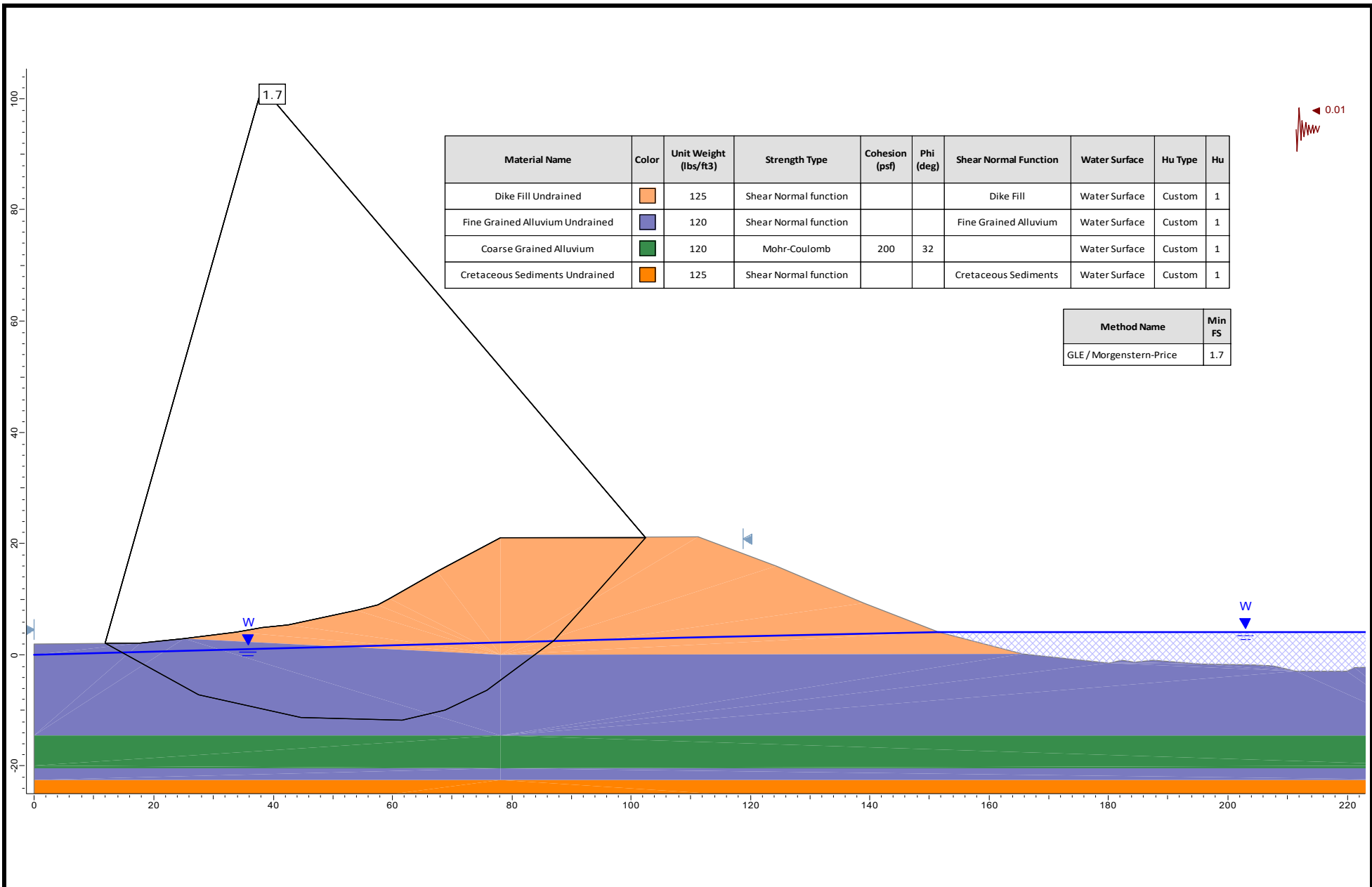
	SCALE	AS SHOWN	PROJECT	Possum Point Pond ABC - Inactive Pond Demonstration		
	DATE	Feb 2018	TITLE	<p align="center">Section A-A Long Term, Normal Storage Pool</p>		
	MADE BY	LJ				
	CAD	-				
FILE	STABILITY	CHECK	JGM	CLIENT	Dominion Energy	
PROJECT No.	1662150	REV.	0	REVIEW		
					FIGURE	2(a)



Material Name	Color	Unit Weight (lbs/ft ³)	Strength Type	Cohesion (psf)	Phi (deg)	Water Surface	Hu Type	Hu
Dike Fill Drained	Orange	125	Mohr-Coulomb	100	30	Water Surface	Custom	1
Fine Grained Alluvium Drained	Purple	120	Mohr-Coulomb	100	28	Water Surface	Custom	1
Coarse Grained Alluvium Drained	Green	120	Mohr-Coulomb	200	32	Water Surface	Custom	1
Cretaceous Sediments Drained	Dark Orange	125	Mohr-Coulomb	0	40	Water Surface	Custom	1


Method Name	Min FS
GLE / Morgenstern-Price	1.8

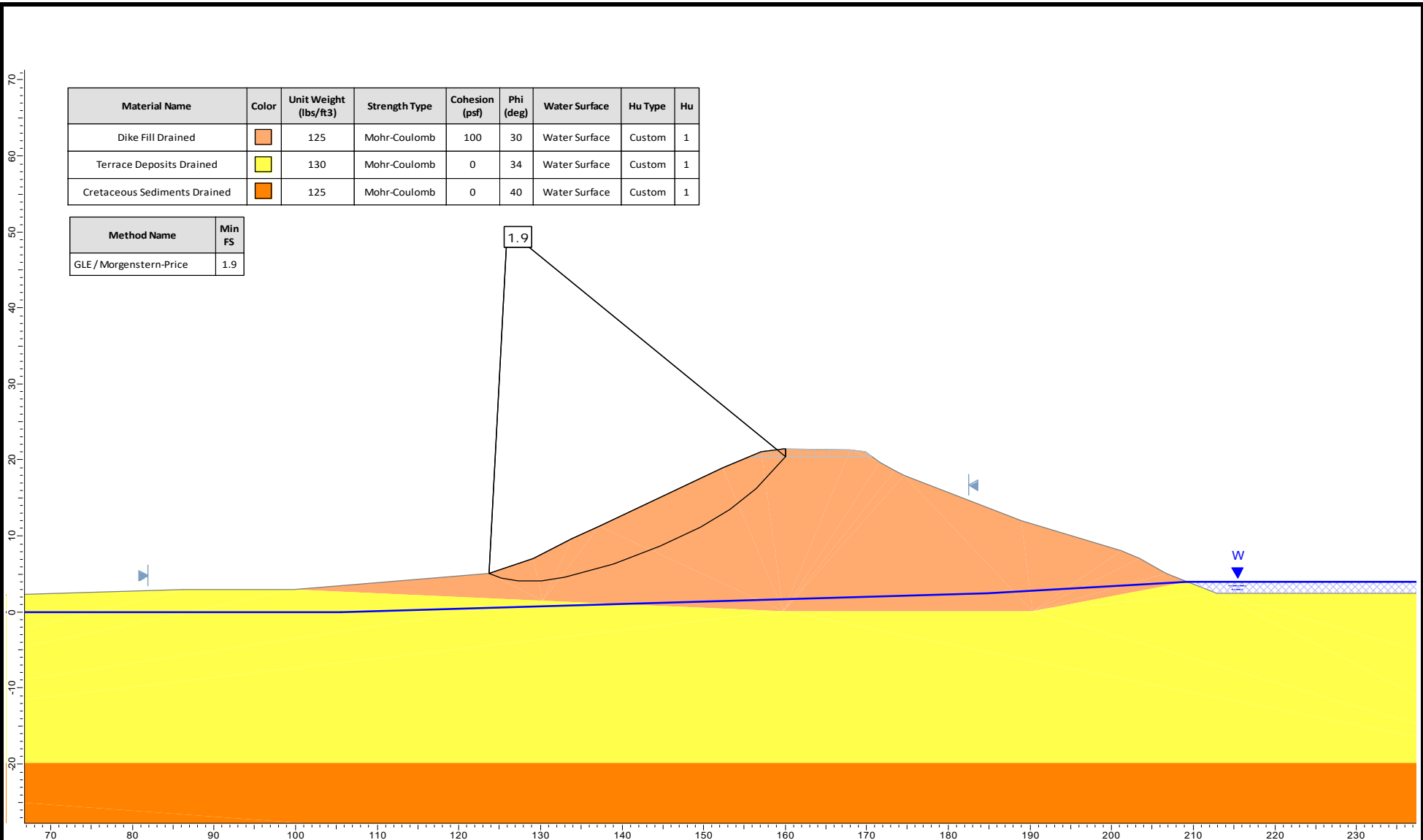
	SCALE	AS SHOWN	PROJECT	Possum Point Pond ABC - Inactive Pond Demonstration	
	DATE	Feb 2018	TITLE	Section A-A Maximum Surcharge Pool	
	MADE BY	LJ			
	CAD	-			
FILE	STABILITY	CHECK	JGM	CLIENT	Dominion Energy
PROJECT No.	1662150	REV.	0	REVIEW	
					FIGURE 2(b)



Material Name	Color	Unit Weight (lbs/ft3)	Strength Type	Cohesion (psf)	Phi (deg)	Shear Normal Function	Water Surface	Hu Type	Hu
Dike Fill Undrained	Orange	125	Shear Normal function			Dike Fill	Water Surface	Custom	1
Fine Grained Alluvium Undrained	Purple	120	Shear Normal function			Fine Grained Alluvium	Water Surface	Custom	1
Coarse Grained Alluvium	Green	120	Mohr-Coulomb	200	32		Water Surface	Custom	1
Cretaceous Sediments Undrained	Orange	125	Shear Normal function			Cretaceous Sediments	Water Surface	Custom	1

Method Name	Min FS
GLE / Morgenstern-Price	1.7

	SCALE	AS SHOWN	PROJECT	Possum Point Pond ABC - Inactive Pond Demonstration		
	DATE	Feb 2018	TITLE	Section A-A Seismic Screening		
	MADE BY	LJ				
	CAD	-				
FILE	STABILITY	CHECK	JGM	CLIENT	Dominion Energy	
PROJECT No.	1662150	REV.	0	REVIEW		
					FIGURE	2(c)



SCALE AS SHOWN
 DATE Feb 2018
 MADE BY LJ
 CAD -

PROJECT **Possum Point Pond ABC - Inactive Pond Demonstration**

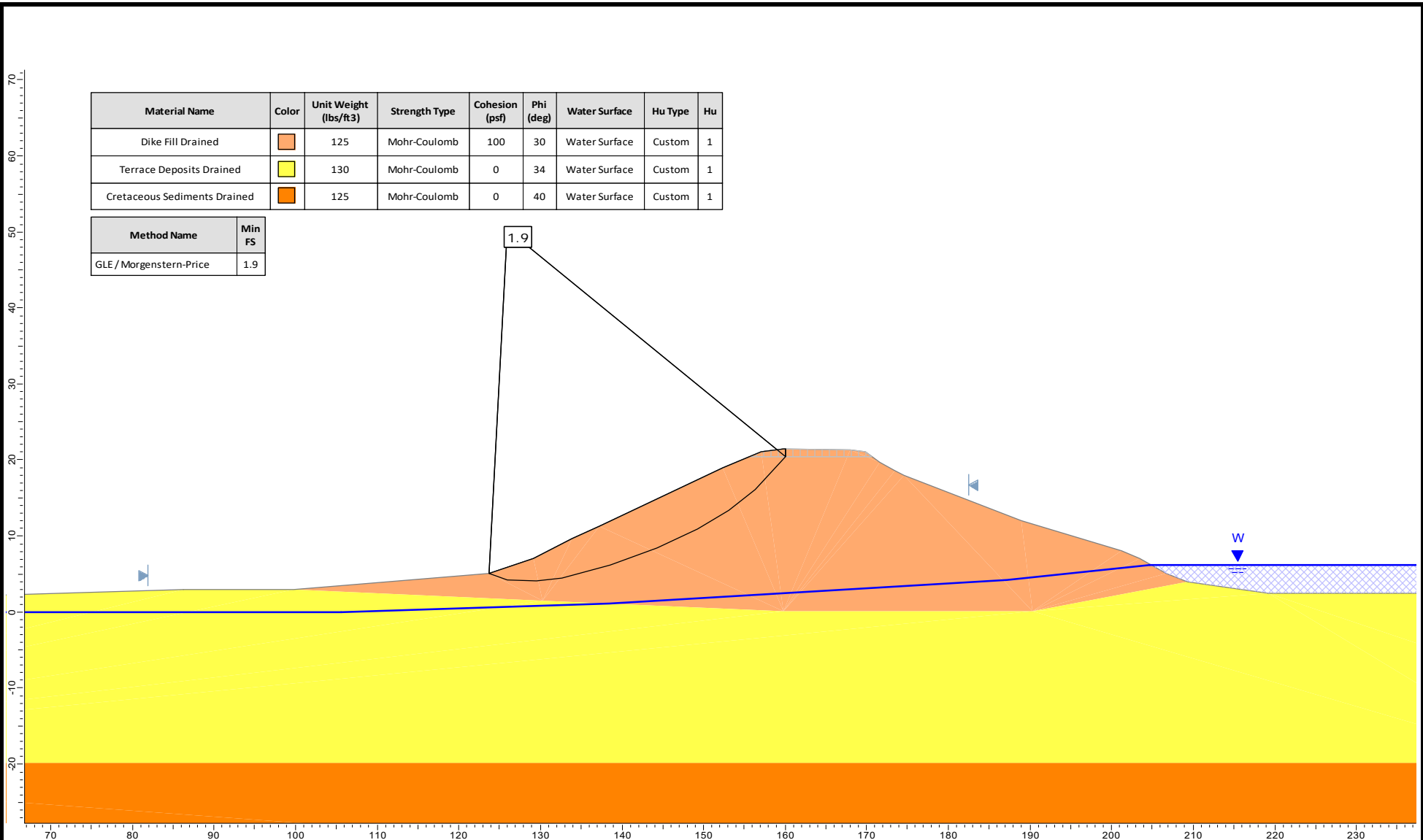
TITLE **Section B-B
 Long Term, Normal Storage Pool**

FILE STABILITY
 PROJECT No. 1662150 REV. 0

CHECK JGM
 REVIEW

CLIENT **Dominion Energy**

FIGURE **3(a)**



Material Name	Color	Unit Weight (lbs/ft3)	Strength Type	Cohesion (psf)	Phi (deg)	Water Surface	Hu Type	Hu
Dike Fill Drained	■	125	Mohr-Coulomb	100	30	Water Surface	Custom	1
Terrace Deposits Drained	■	130	Mohr-Coulomb	0	34	Water Surface	Custom	1
Cretaceous Sediments Drained	■	125	Mohr-Coulomb	0	40	Water Surface	Custom	1

Method Name	Min FS
GLE / Morgenstern-Price	1.9

1.9



SCALE	AS SHOWN
DATE	Feb 2018
MADE BY	LJ
CAD	-

PROJECT **Possom Point Pond ABC - Inactive Pond Demonstration**

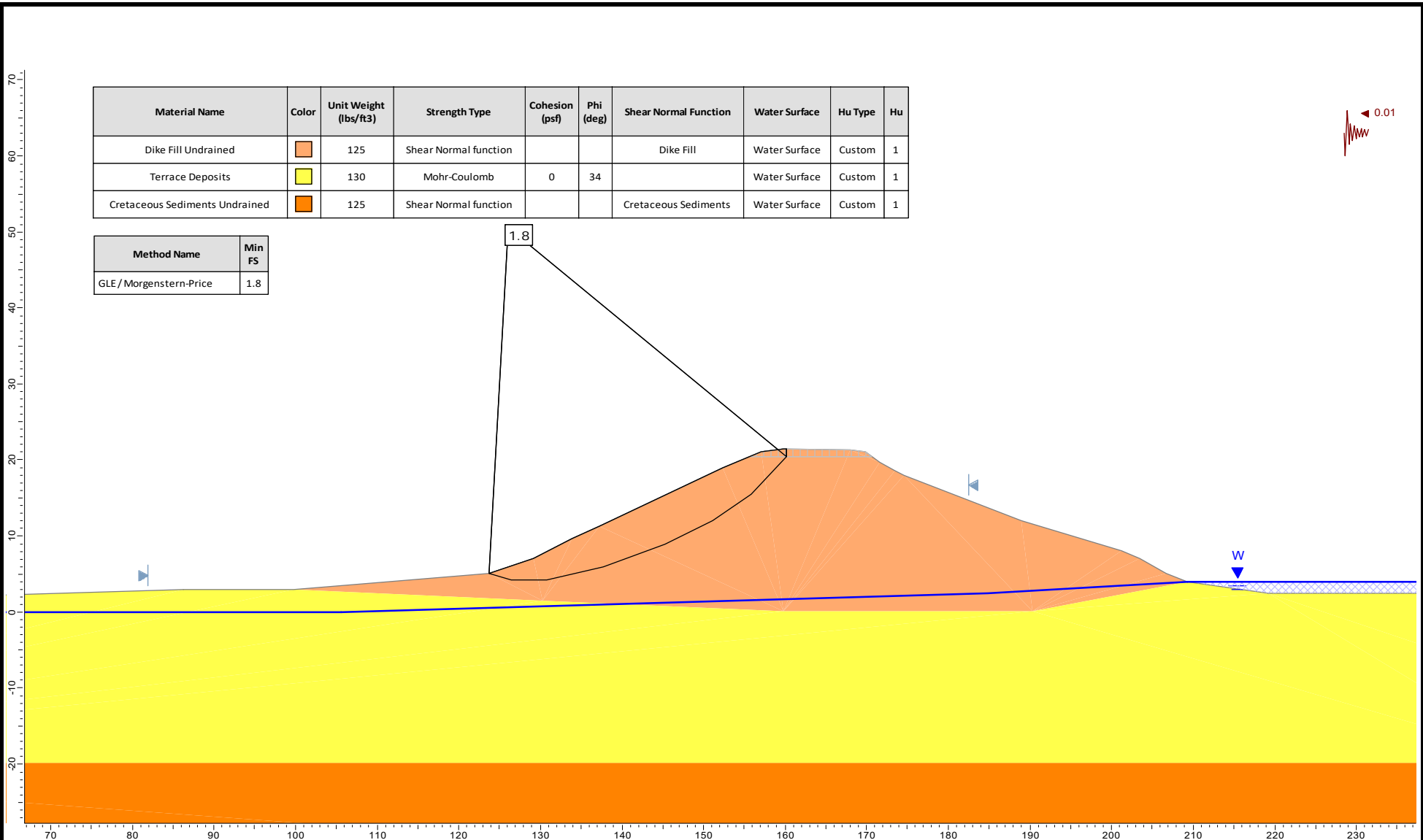
TITLE **Section B-B
Maximum Surchage Pool**

FILE	STABILITY
PROJECT No. 1662150	REV. 0

CHECK	JGM
REVIEW	

CLIENT **Dominion Energy**

FIGURE **3(b)**



SCALE AS SHOWN
 DATE Feb 2018
 MADE BY LJ
 CAD -

PROJECT **Possum Point Pond ABC - Inactive Pond Demonstration**

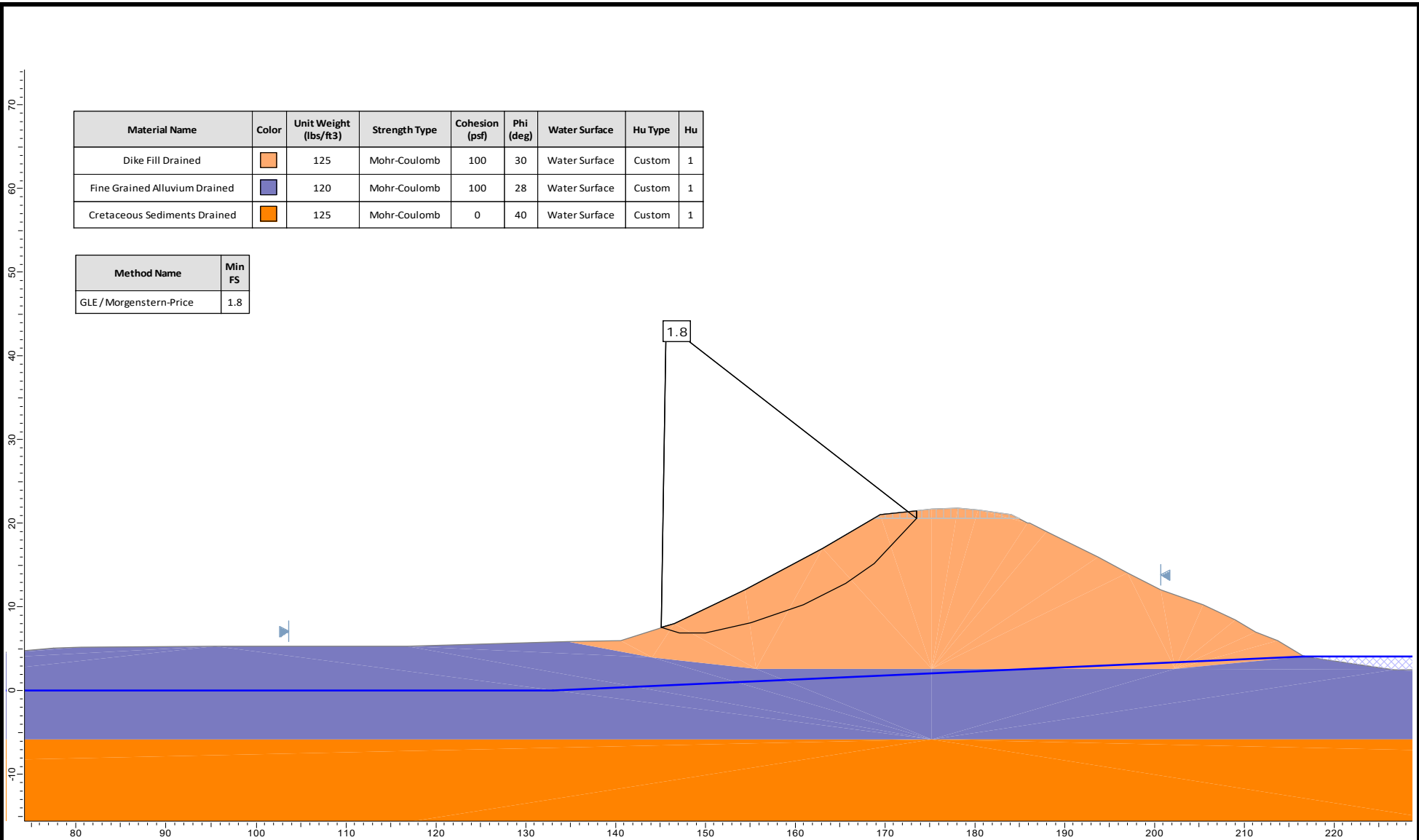
TITLE **Section B-B
Seismic Screening**

FILE STABILITY
 PROJECT No. 1662150 REV. 0

CHECK JGM
 REVIEW

CLIENT **Dominion Energy**

FIGURE **3(c)**



SCALE	AS SHOWN
DATE	Feb 2018
MADE BY	LJ
CAD	-

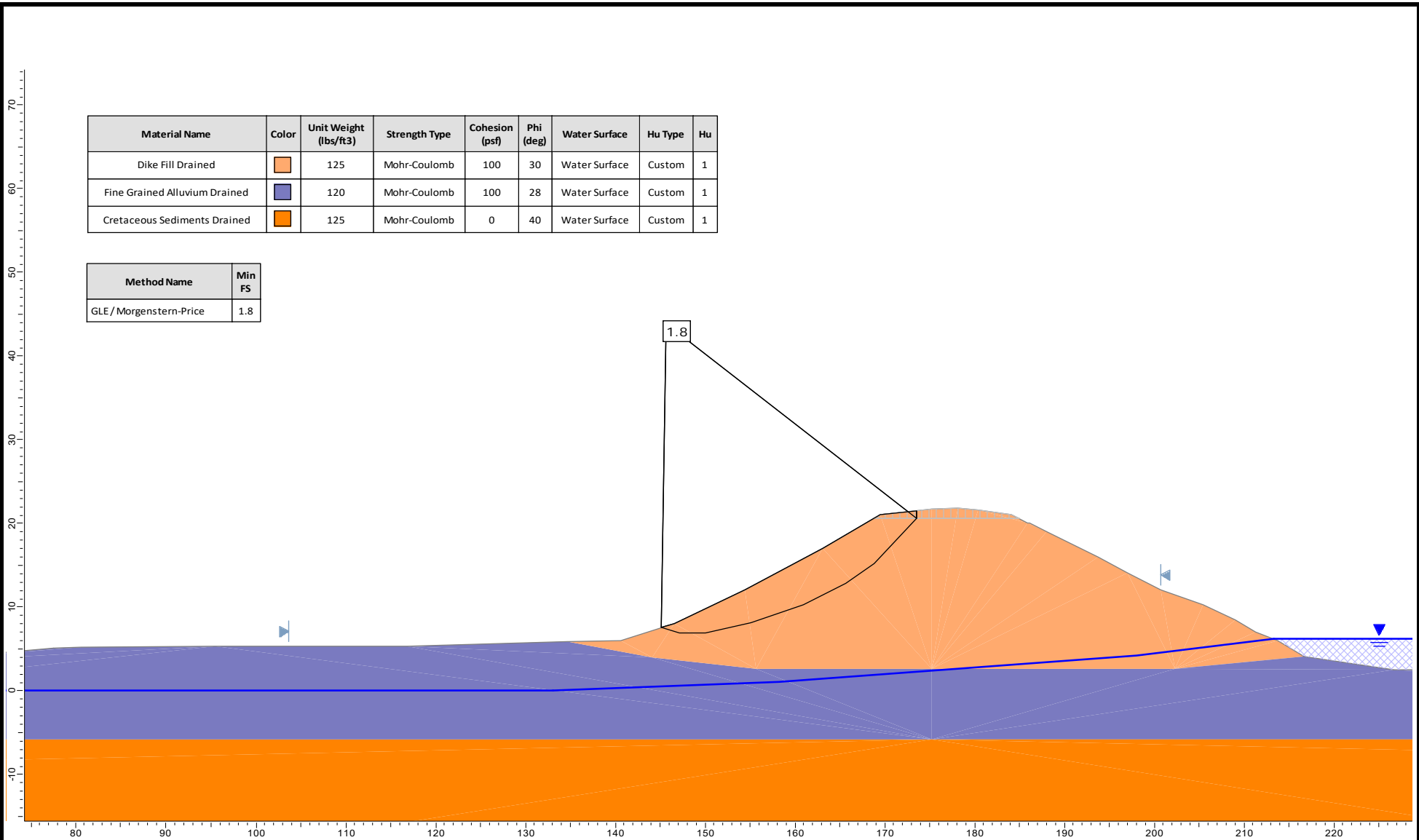
PROJECT	Possum Point Pond ABC - Inactive Pond Demonstration
TITLE	Section C-C Long Term, Normal Storage Pool

FILE	STABILITY
PROJECT No.	1662150
REV.	0

CHECK	JGM
REVIEW	

CLIENT	Dominion Energy
--------	------------------------

FIGURE	4(c)
--------	-------------



Material Name	Color	Unit Weight (lbs/ft ³)	Strength Type	Cohesion (psf)	Phi (deg)	Water Surface	Hu Type	Hu
Dike Fill Drained	Orange	125	Mohr-Coulomb	100	30	Water Surface	Custom	1
Fine Grained Alluvium Drained	Purple	120	Mohr-Coulomb	100	28	Water Surface	Custom	1
Cretaceous Sediments Drained	Dark Orange	125	Mohr-Coulomb	0	40	Water Surface	Custom	1

Method Name	Min FS
GLE/Morgenstern-Price	1.8



SCALE	AS SHOWN
DATE	Feb 2018
MADE BY	LJ
CAD	-

PROJECT **Possum Point Pond ABC - Inactive Pond Demonstration**

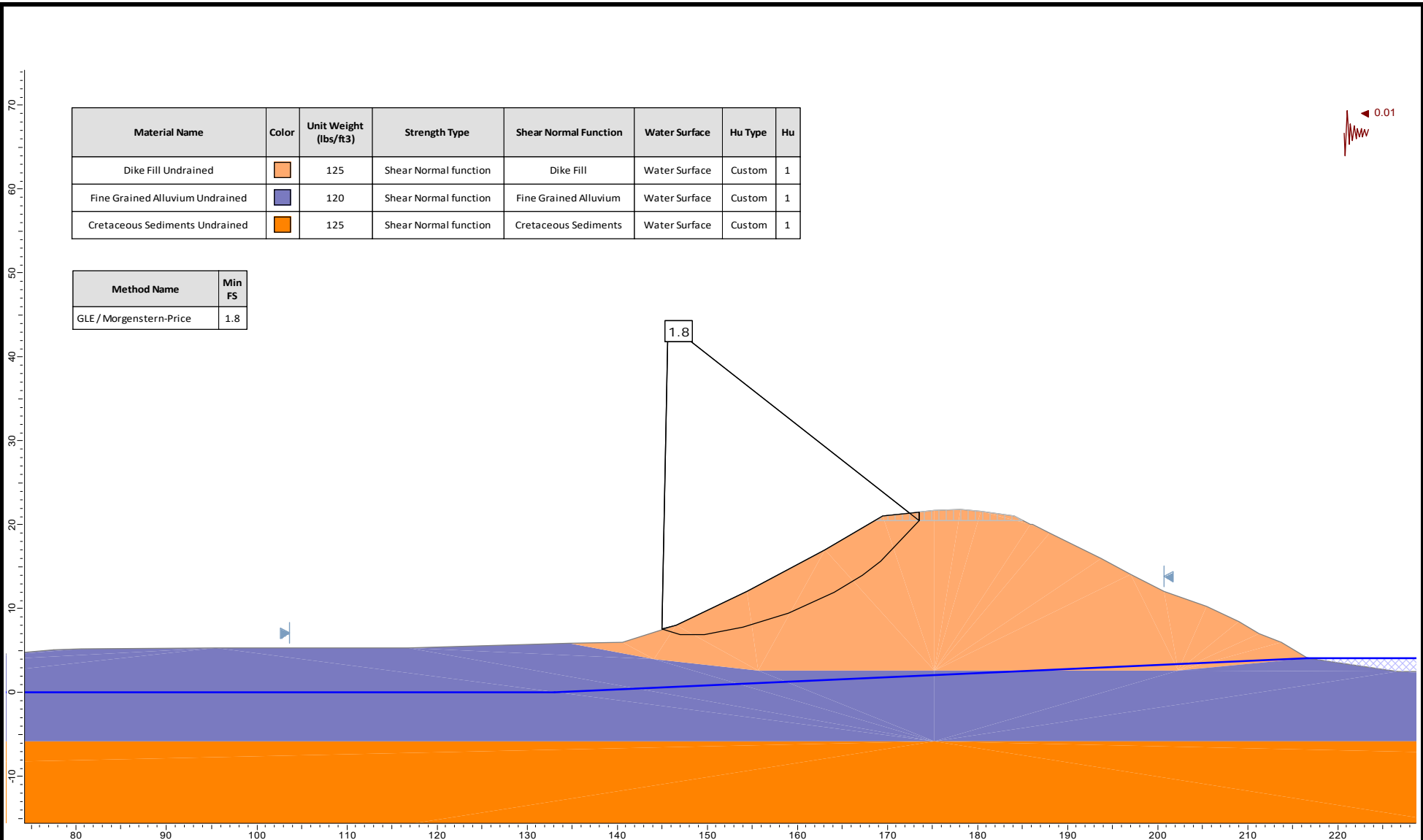
TITLE **Section C-C
Maximum Surchage Pool**

FILE	STABILITY
PROJECT No. 1662150	REV. 0

CHECK	JGM
REVIEW	

CLIENT **Dominion Energy**

FIGURE **5(a)**



Material Name	Color	Unit Weight (lbs/ft ³)	Strength Type	Shear Normal Function	Water Surface	Hu Type	Hu
Dike Fill Undrained	Orange	125	Shear Normal function	Dike Fill	Water Surface	Custom	1
Fine Grained Alluvium Undrained	Blue	120	Shear Normal function	Fine Grained Alluvium	Water Surface	Custom	1
Cretaceous Sediments Undrained	Dark Orange	125	Shear Normal function	Cretaceous Sediments	Water Surface	Custom	1

Method Name	Min FS
GLE / Morgenstern-Price	1.8



SCALE	AS SHOWN
DATE	Feb 2018
MADE BY	LJ
CAD	-

PROJECT **Possum Point Pond ABC - Inactive Pond Demonstration**

TITLE **Section C-C
Seismic Screening**

FILE	STABILITY
PROJECT No.	1662150
REV.	0

CHECK	JGM
REVIEW	

CLIENT **Dominion Energy**

FIGURE **5(b)**

Established in 1960, Golder Associates is a global, employee-owned organization that helps clients find sustainable solutions to the challenges of finite resources, energy and water supply and management, waste management, urbanization, and climate change. We provide a wide range of independent consulting, design, and construction services in our specialist areas of earth, environment, and energy. By building strong relationships and meeting the needs of clients, our people have created one of the most trusted professional services organizations in the world.

Africa	+ 27 11 254 4800
Asia	+ 852 2562 3658
Australasia	+ 61 3 8862 3500
Europe	+ 356 21 42 30 20
North America	+ 1 800 275 3281
South America	+ 56 2 2616 2000

solutions@golder.com
www.golder.com

Golder Associates Inc.
2108 W. Laburnum Avenue, Suite 200
Richmond, VA 23227 USA
Tel: (804) 358-7900
Fax: (804) 358-2900



Engineering Earth's Development, Preserving Earth's Integrity

Golder, Golder Associates and the GA globe design are trademarks of Golder Associates Corporation