



**Flue Gas Desulfurization Wastewater Pond
Groundwater Monitoring System Certification
per 40 CFR 257.91(f)**

**Wateree Generating Station
Eastover, South Carolina**

October 6, 2023

*Prepared For
Dominion Energy South Carolina*

A handwritten signature in blue ink, reading "Nakia W. Addison".

Nakia W. Addison, P.E.
Senior Engineer

*TRC Environmental Corporation | Dominion Energy South Carolina
Groundwater Monitoring System Certification
Wateree Station, Eastover, South Carolina*

Regulatory Requirement

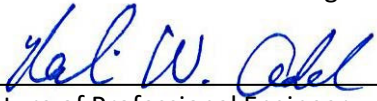
Pursuant to 40 CFR 257.91(a), the Dominion Energy South Carolina (DESC) Wateree Generating Station has installed a groundwater monitoring system around its Flue Gas Desulfurization Wastewater Pond (FGD Pond). Per 40 CFR 257.91(f), the owner or operator must obtain a certification from a qualified professional engineer stating the groundwater monitoring system has been designed and constructed to meet the requirements of 40 CFR 257.91.

In December 2022, DESC installed one (1) new groundwater monitoring well (MW-FGD-06) upgradient to the northeast of the FGD Pond. The newly installed monitoring well was sampled from January 2023 through August 2023, to collect eight rounds of background monitoring data. To ensure the groundwater monitoring network meets the requirements of 40 CFR 257.91, the monitoring well network is being updated to include existing wells MW-FGD-01, MW-FGD-02, MW-FGD-03, MW-FGD-04, MW-FGD-05, and AS-FGD-01 and newly installed well MW-FGD-06. The revised monitoring network is presented on **Figure 1: CCR Rule Compliance Monitoring Well Network**. A groundwater potentiometric map from March 2023 is included as **Figure 2: Groundwater Potentiometric Map – March 10, 2023**.

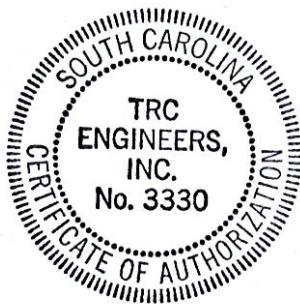
Certification

I, the undersigned South Carolina Professional Engineer, hereby certify that I am familiar with the technical requirements of 40 CFR 257.91. I also certify that it is my professional opinion that, to the best of my knowledge, information, and belief, the groundwater monitoring system has been designed and constructed in accordance with current good and accepted engineering practice(s) and standard(s) appropriate to the nature of the project and the technical requirements of 40 CFR 257.91.

For the purpose of this document, “certify” and “certification” shall be interpreted and construed to be a “statement of professional opinion”. The certification is understood and intended to be an expression of my professional opinion as a South Carolina Licensed Professional Engineer, based upon knowledge, information, and belief. The statement(s) of professional opinion are not and shall not be interpreted or construed to be a guarantee or a warranty of the monitoring system.

Nakia W. Addison
Printed Name of Professional Engineer

Signature of Professional Engineer

31497
State of South Carolina License Number
October 6, 2023
Date



Coordinate System: NAD 1983 StatePlane South Carolina FIPS 3900 Feet, Map Rotation: 0
 -- Saved By: L.LILL on 10/6/2023, 08:55:21 AM, File Path: T:\PROJECTS\Dominion\South_Carolina\5_Waterree_SCI-APRX\2023_Figures.aprx, Layout Name: Fig01 - Waterree_CCR_Well_Network



LEGEND

- CCR BACKGROUND MONITORING WELL
- CCR DOWNGRAIDENT MONITORING WELL
- CCR ASD MONITORING WELL
- EVENT PIEZOMETER
- FGD POND BOUNDARY
- CLASS III LANDFILL

NOTES:

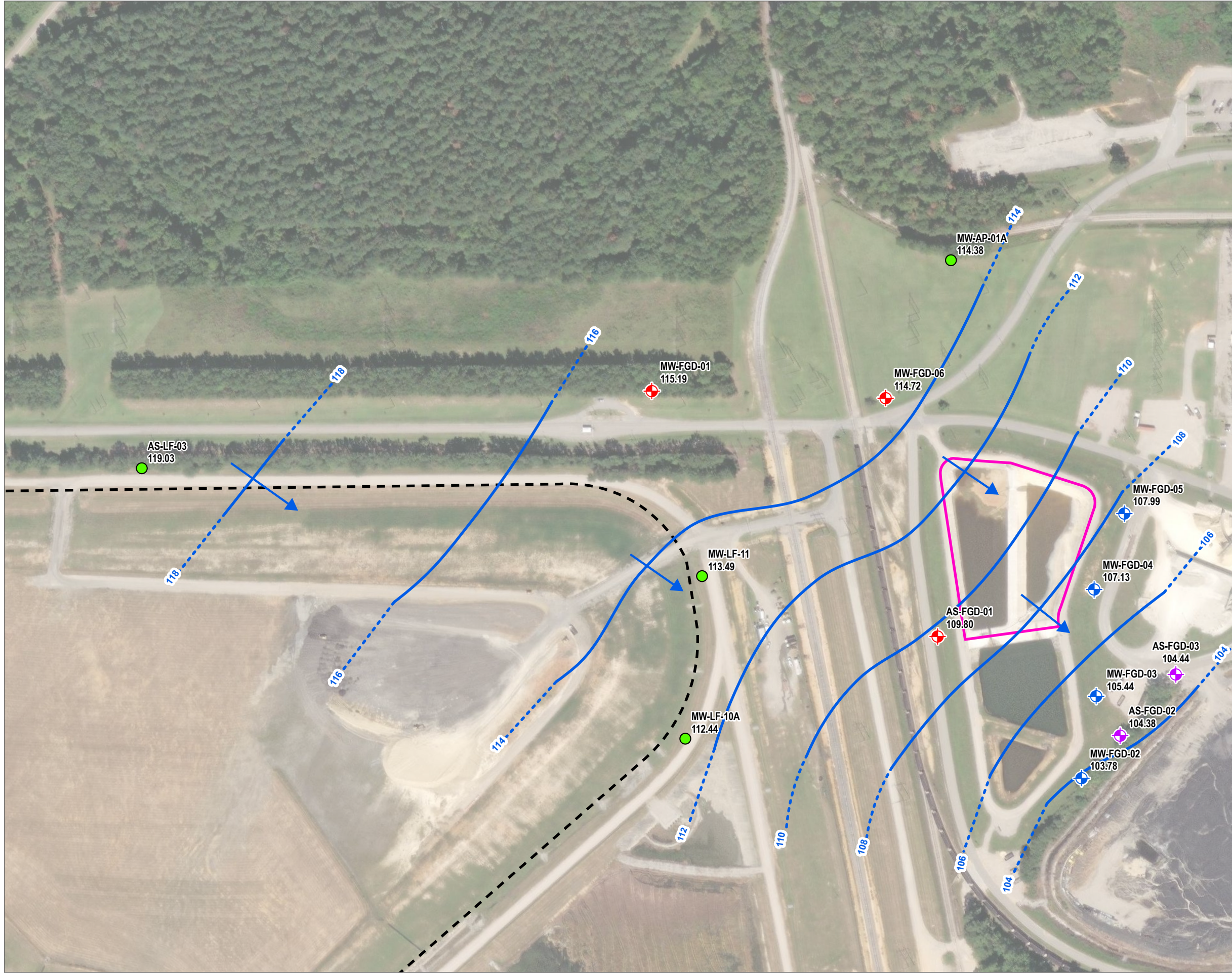
1. AERIAL IMAGE FROM ESRI WORLD IMAGERY DATED APRIL, 2021.



1:3,000
 1" = 250'
 0 125 250 FEET

PROJECT: DESC WATEREE STATION FGD POND EASTOVER, SOUTH CAROLINA	
TITLE: CCR RULE COMPLIANCE MONITORING WELL NETWORK	
DRAWN BY: L. LILL	PROJ. NO.: 416559.0005.0000
CHECKED BY: J. YONTS	FIGURE 1
APPROVED BY: R. MAYER	
DATE: OCTOBER 2023	
50 INTERNATIONAL DRIVE PATEWOOD PLAZA THREE, SUITE 150 GREENVILLE, SC 29615 PHONE: 864.281.0030	
FILE:	2023_Figures.aprx

Coordinate System: NAD 1983 StatePlane South Carolina FIPS 3900 Feet, Map Rotation: 0
 - Saved By: L.LILL on 9/26/2023, 1:38:43 PM, File Path: T:\PROJECTS\Dominion\South_Carolina\5 - Waterres_SCI-APPRX\2023_Figures\2023_Figures.aprx, Layout Name: Fig03 - Waterres_CCR_FGD Pond_WT_03102023



LEGEND

- ◆ CCR BACKGROUND MONITORING WELL
- CCR DOWNGRADE MONITORING WELL
- ◆ CCR ASD MONITORING WELL
- EVENT PIEZOMETER
- FGD POND BOUNDARY
- CLASS III LANDFILL
- ➔ APPROXIMATE GROUNDWATER FLOW DIRECTION
- WATER TABLE ELEVATION IN FEET ABOVE MEAN SEA LEVEL (2' CONTOUR INTERVALS) - DASHED WHERE INFERRED

115.19 WATER ELEVATION (FT. MSL)

- NOTES:**
1. AERIAL IMAGE FROM ESRI WORLD IMAGERY DATED APRIL, 2021.
 2. * - WATER LEVEL NOT USED TO CREATE CONTOURS.

↑
N

1:3,000
 1" = 250'

0 125 250 FEET

PROJECT:		DESC WATEREE STATION FGD POND EASTOVER, SOUTH CAROLINA	
TITLE:		GROUNDWATER POTENTIOMETRIC MAP - MARCH 10, 2023	
DRAWN BY:	L. LILL	PROJ. NO.:	416559.0005.0000
CHECKED BY:	J. YONTS	FIGURE 2	
APPROVED BY:	R. MAYER		
DATE:	SEPTEMBER 2023		
TRC		50 INTERNATIONAL DRIVE PATEWOOD PLAZA THREE, SUITE 150 GREENVILLE, SC 29615 PHONE: 864.281.0030	
FILE:		2023_Figures.aprx	