



**New Flue Gas Desulfurization Wastewater Pond
Groundwater Monitoring System Certification
per 40 CFR 257.91(f)**

**Williams Generating Station
Goose Creek, South Carolina**

September 29, 2023

*Prepared For
Dominion Energy South Carolina*

A handwritten signature in blue ink, reading "Nakia W. Addison", is written over a horizontal line.

Nakia W. Addison, P.E.
Senior Engineer

*TRC Environmental Corporation | Dominion Energy South Carolina
Groundwater Monitoring System Certification
Williams Station, Goose Creek, South Carolina*

\\employees.root.local\env\ECC\Greenville\WPGVL\PJT2\416559\0006 Williams\R4165590006-031 Williams Station New FGD Pond GW Monitoring Network Certification.docx

Regulatory Requirement

Pursuant to 40 CFR 257.91(a), the Dominion Energy South Carolina (DESC) Williams Generating Station has installed a groundwater monitoring system around its New Flue Gas Desulfurization Wastewater Pond (New FGD Pond). Per 40 CFR 257.91(f), the owner or operator must obtain a certification from a qualified professional engineer stating the groundwater monitoring system has been designed and constructed to meet the requirements of 40 CFR 257.91.

In January 2023, DESC installed three (3) new groundwater monitoring wells (MW-FGD-22, MW-FGD-23, and MW-FGD-24) along the western and southern edge of the New FGD Pond. The newly installed wells were sampled from January 2023 through August 2023, to collect eight rounds of background monitoring data. To ensure the groundwater monitoring network meets the requirements of 40 CFR 257.91, the monitoring well network is being updated to include existing wells MW-FGD-18, MW-FGD-19D, and MW-FGD-20AR and newly installed wells MW-FGD-23 and MW-FGD-24. The revised monitoring network is presented on **Figure 1: CCR Rule Compliance Monitoring Well Network**. A groundwater potentiometric map from March 2023 is included as **Figure 2: Groundwater Potentiometric Map – March 20, 2023**.

Certification

I, the undersigned South Carolina Professional Engineer, hereby certify that I am familiar with the technical requirements of 40 CFR 257.91. I also certify that it is my professional opinion that, to the best of my knowledge, information, and belief, the groundwater monitoring system has been designed and constructed in accordance with current good and accepted engineering practice(s) and standard(s) appropriate to the nature of the project and the technical requirements of 40 CFR 257.91.

For the purpose of this document, “certify” and “certification” shall be interpreted and construed to be a “statement of professional opinion”. The certification is understood and intended to be an expression of my professional opinion as a South Carolina Licensed Professional Engineer, based upon knowledge, information, and belief. The statement(s) of professional opinion are not and shall not be interpreted or construed to be a guarantee or a warranty of the monitoring system.

Nakia W. Addison

31497

Printed Name of Professional Engineer

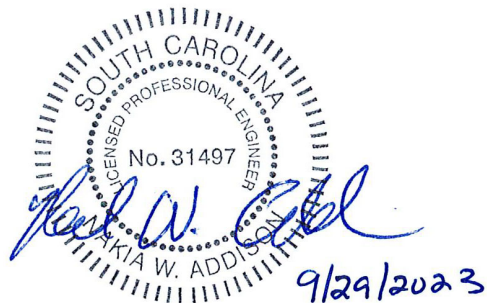
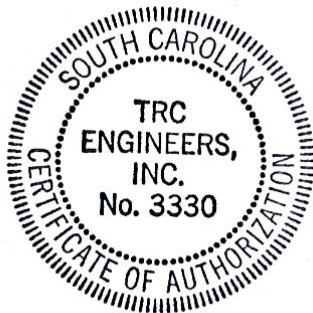
State of South Carolina License Number

Nakia W. Addison

September 29, 2023

Signature of Professional Engineer

Date

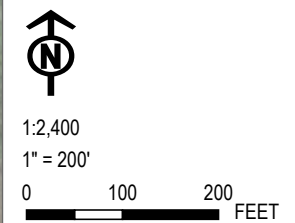


Coordinate System: NAD 1983 StatePlane South Carolina FIPS 3900 Feet, Map Rotation: 0
 -- Saved By: L.LILL on 9/29/2023, 13:15:01 PM, File Path: T:\PROJECTS\Dominion\South Carolina\6 Williams Station\2-APR\2023_Figures.aprx, Layout Name: Fig02_WWS_FGD_CCR_WellNetwork



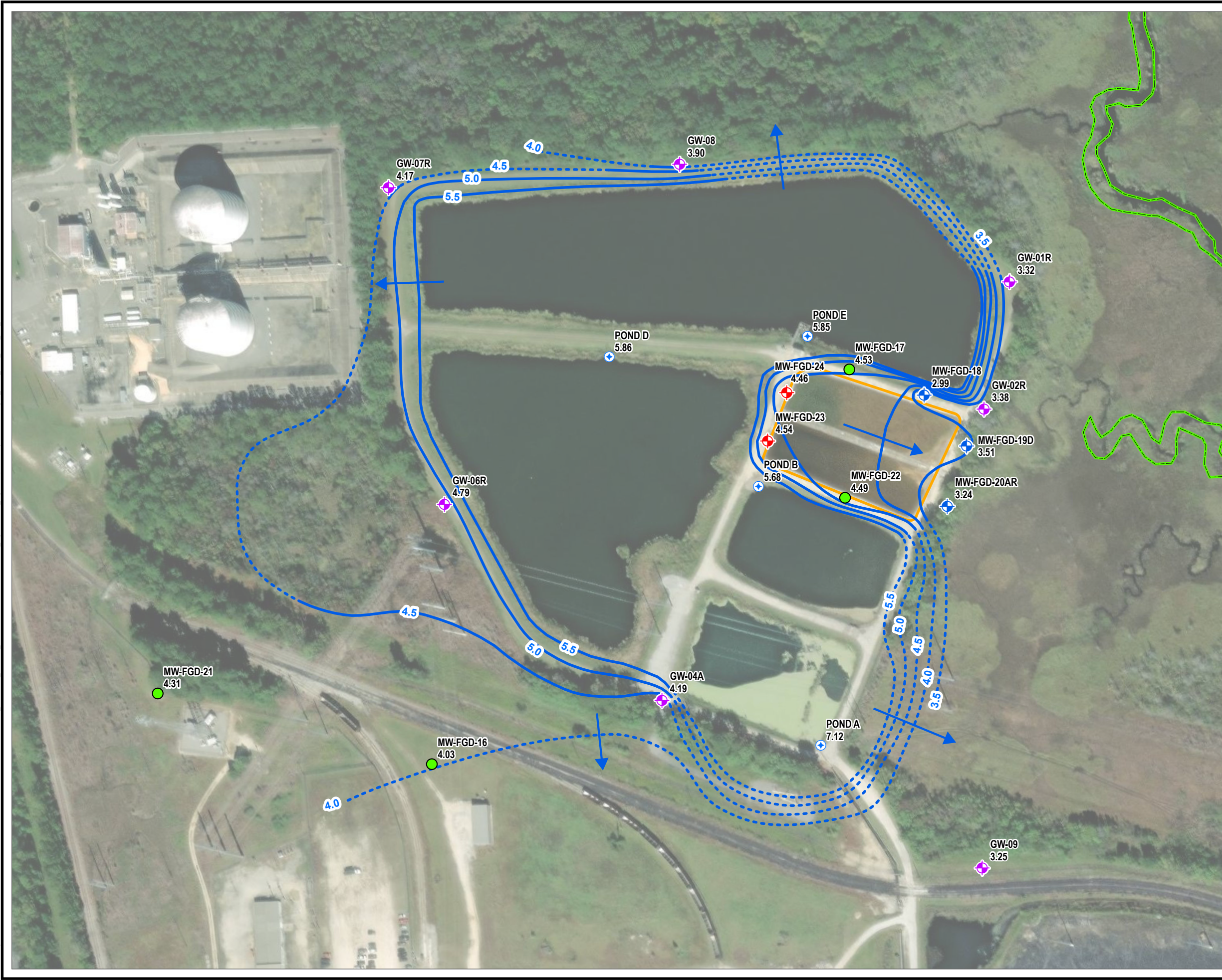
- LEGEND**
- ◆ CCR BACKGROUND MONITORING WELL
 - ◆ CCR DOWNGRAIDENT MONITORING WELL
 - ◆ NPDES MONITORING WELL
 - EVENT PIEZOMETER
 - ⊕ STAFF GAUGE
 - NEW FGD POND BOUNDARY
 - PROPERTY BOUNDARY

NOTES:
 1. AERIAL IMAGE FROM ESRI WORLD IMAGERY DATED OCTOBER, 2022.



PROJECT:		DESC WILLIAMS STATION NEW FGD POND GOOSE CREEK, SOUTH CAROLINA	
TITLE:		CCR RULE COMPLIANCE MONITORING WELL NETWORK	
DRAWN BY:	L. LILL	PROJ. NO.:	416559.0006.0000
CHECKED BY:	J. YONTS	FIGURE 1	
APPROVED BY:	R. MAYER		
DATE:	SEPTEMBER 2023		
		50 INTERNATIONAL DRIVE PATEWOOD PLAZA THREE, SUITE 150 GREENVILLE, SC 29615 PHONE: 864.281.0030	
FILE:	2023_Figures.aprx		

Coordinate System: NAD 1983 StatePlane South Carolina FIPS 3900 Feet, Map Rotation: 0
 - Saved By: L.LILL on 9/29/2023, 13:15:01 PM, File Path: T:\PROJECTS\Dominion\South_Carolina\6 - Williams - SCI\Williams Station\2-APR\2023_Figures\2023_Figures.aprx, Layout Name: Fig03 - WWS - FGD - CCR - WT - 20230320



LEGEND

- ◆ CCR BACKGROUND MONITORING WELL
- ◆ CCR DOWNGRADIENT MONITORING WELL
- ◆ NPDES MONITORING WELL
- EVENT PIEZOMETER
- ◆ STAFF GAUGE
- NEW FGD POND BOUNDARY
- PROPERTY BOUNDARY
- APPROXIMATE GROUNDWATER FLOW DIRECTION
- WATER TABLE ELEVATION IN FEET ABOVE MEAN SEA LEVEL (0.5' CONTOUR INTERVALS) - DASHED WHERE INFERRED

4.31 WATER ELEVATION (FT. MSL)

NOTES:
 1. AERIAL IMAGE FROM ESRI WORLD IMAGERY DATED OCTOBER, 2022.

↑
N

1:2,400
 1" = 200'

0 100 200
 FEET

PROJECT: DESC WILLIAMS STATION NEW FGD POND GOOSE CREEK, SOUTH CAROLINA	
TITLE: GROUNDWATER POTENTIOMETRIC MAP - MARCH 20, 2023	
DRAWN BY:	L. LILL
CHECKED BY:	J. YONTS
APPROVED BY:	R. MAYER
DATE:	SEPTEMBER 2023
PROJ. NO.:	416559.0006.0000
FIGURE 2	
 50 INTERNATIONAL DRIVE PATEWOOD PLAZA THREE, SUITE 150 GREENVILLE, SC 29615 PHONE: 864.281.0030 	
FILE:	2023_Figures.aprx