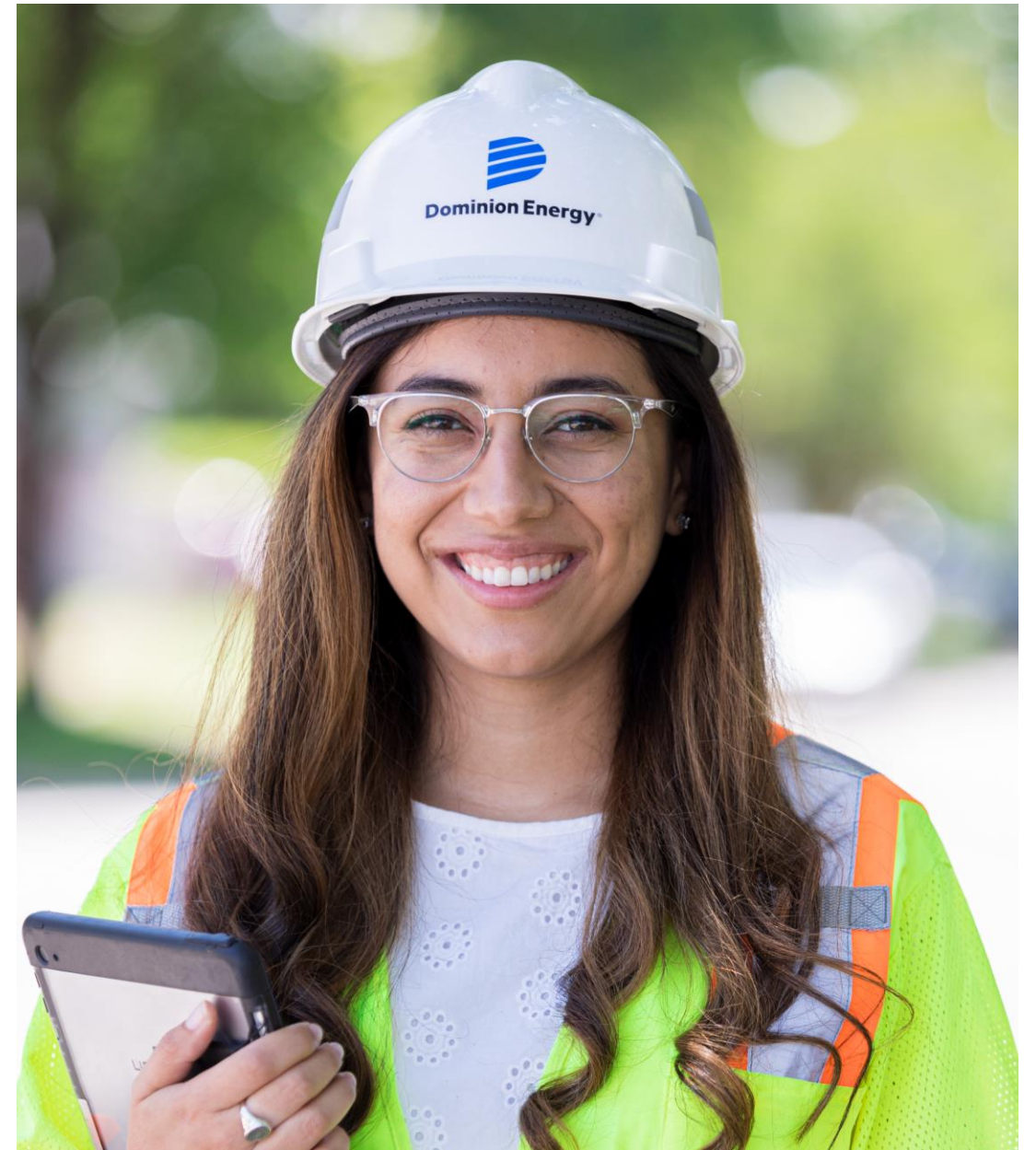


# Meeting Virginia's Energy Needs



**Dominion  
Energy®**

Actions Speak Louder



# Electric Transmission Line Planning and Approval Process

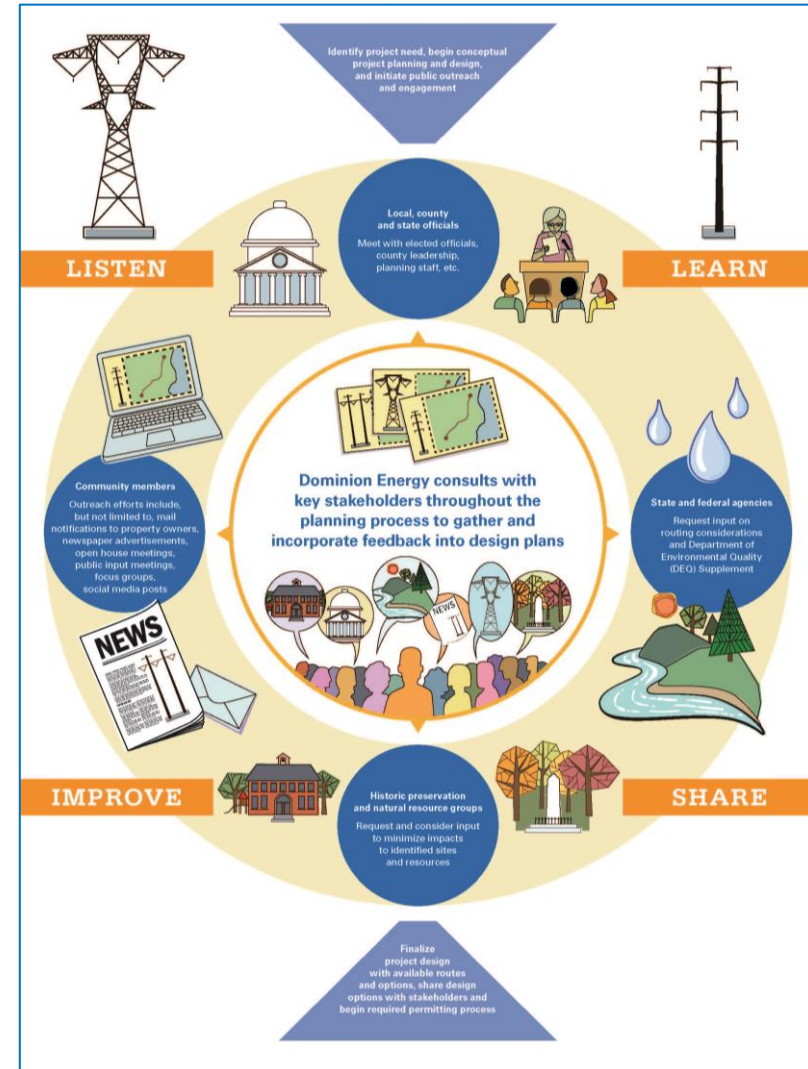


## Relationships

- Value what the community values
- Seek available mutual benefits

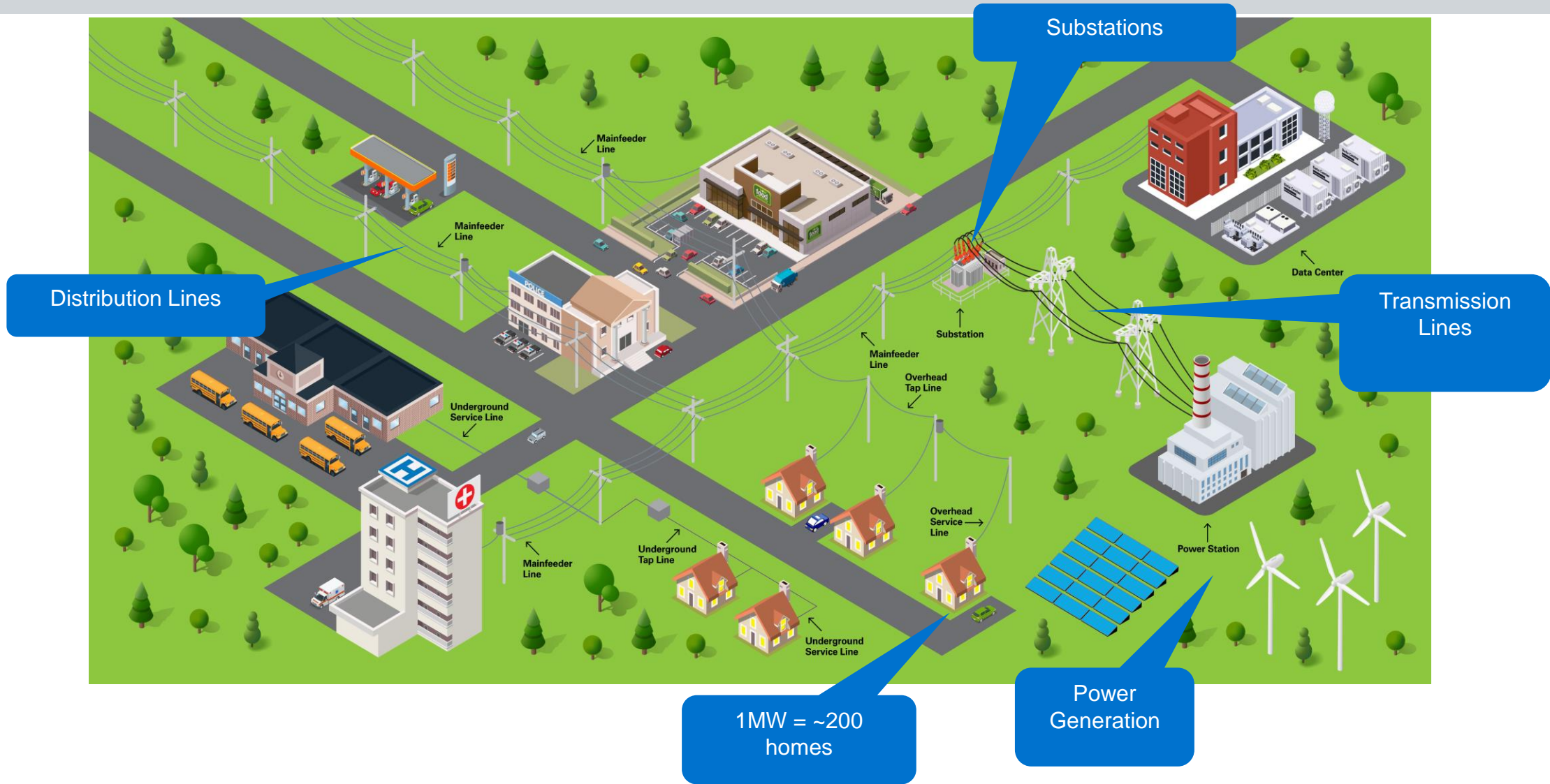
## Trust

- Discussion, connection and empathy
- Stakeholders' willingness to compromise

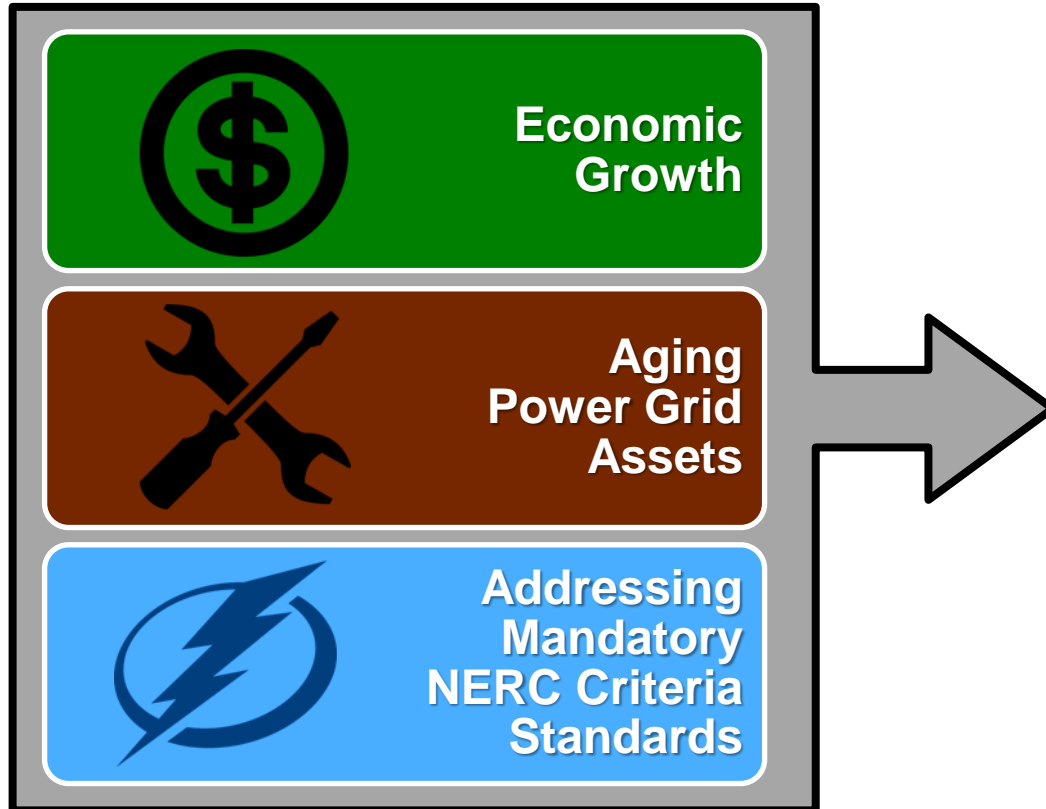




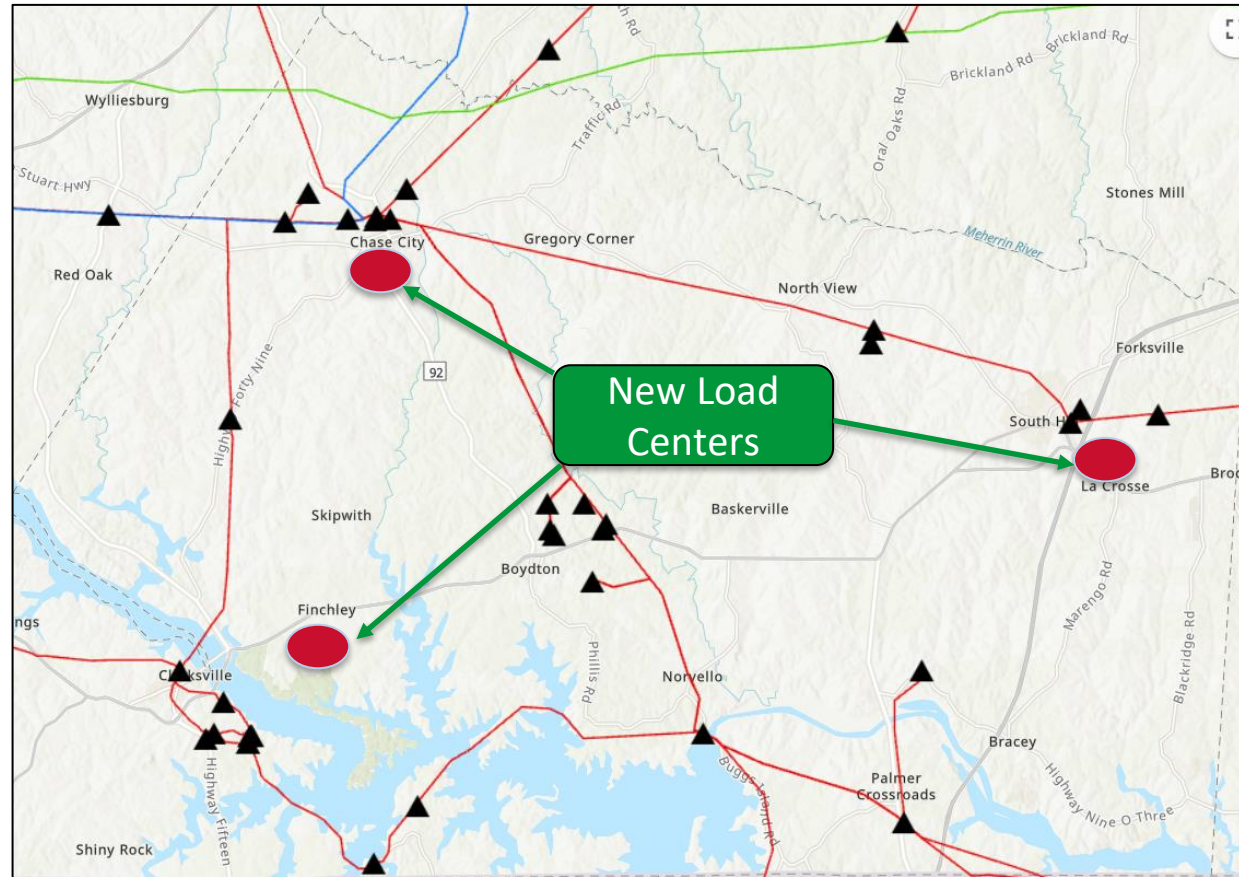
# The Grid and Obligation to Serve



# Forces Driving Infrastructure Need

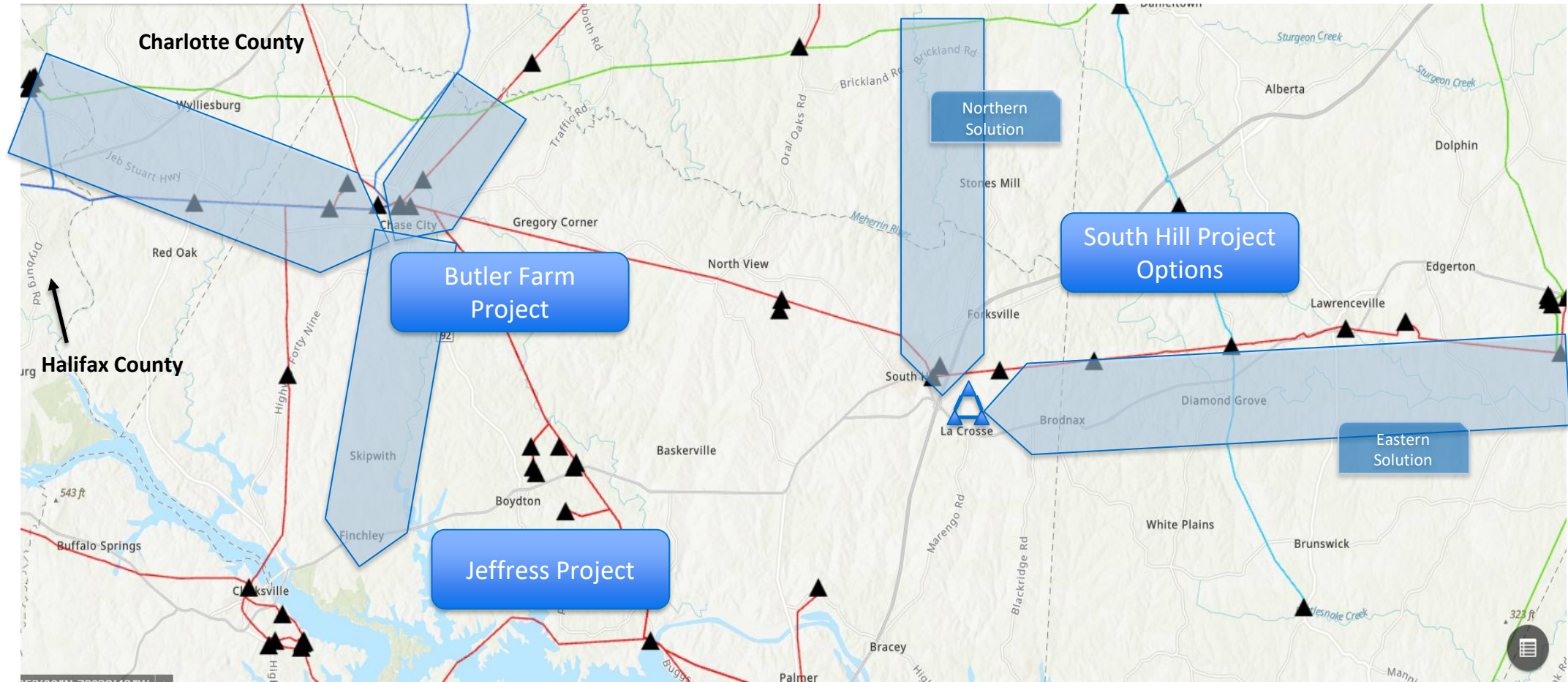


# Current System





# Southside Infrastructure Enhancements Overview

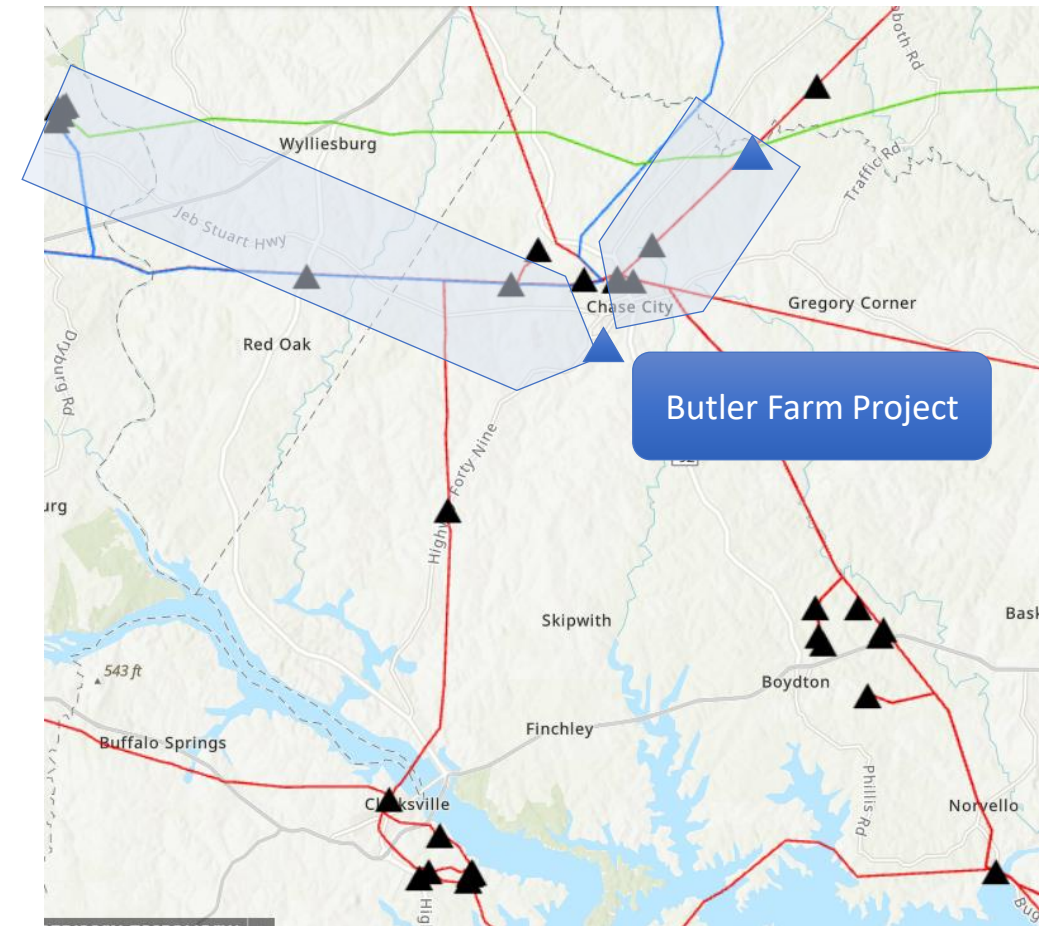


# Butler Farm Project Scope

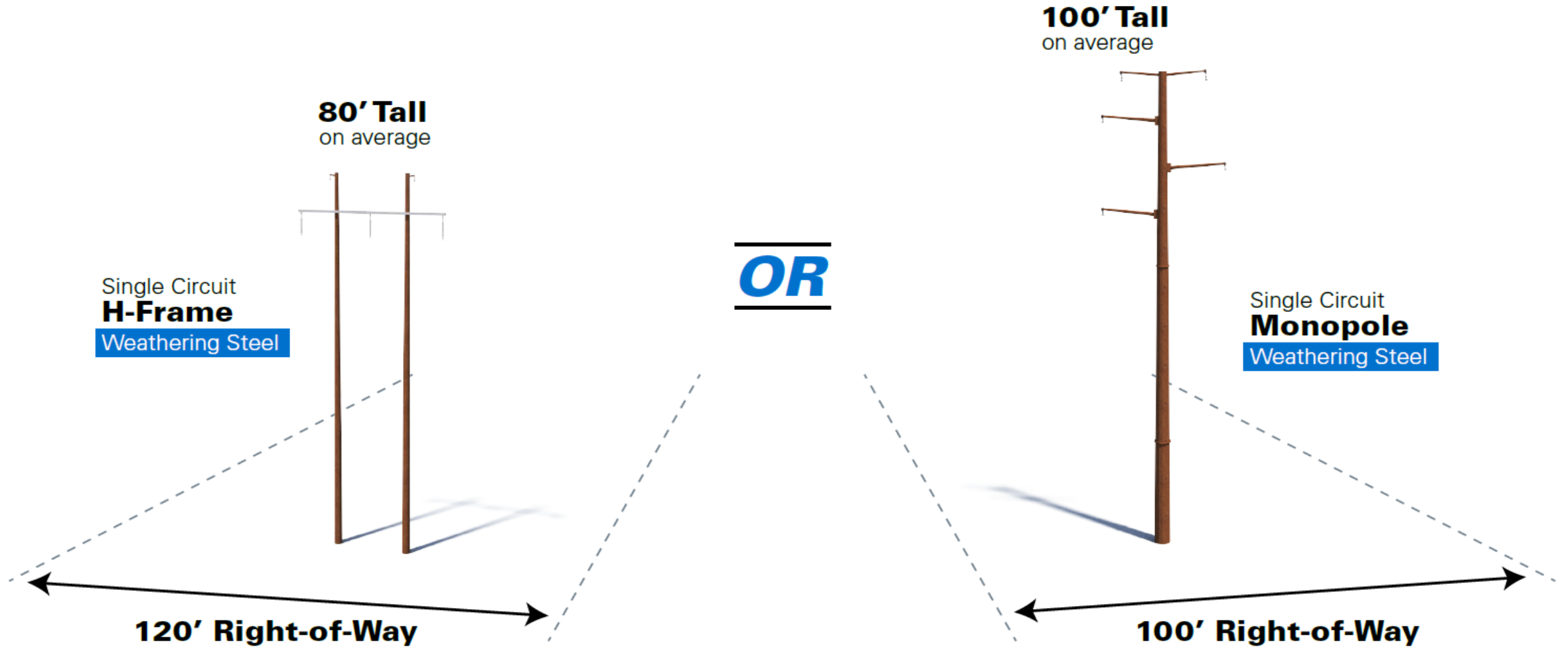
Charlotte, Halifax, and Mecklenburg counties

## Project Goal Scope:

- **Clover-Butler Farm:** Build approximately 18 miles of new single-circuit 230 kV transmission line from the existing Clover Substation to the proposed Butler Farm Substation
  - Right of way needs: ~100' wide
- **Finneywood-Butler Farm:** Build approximately 7 miles of new single-circuit 230 kV transmission line right of way between the proposed Butler Farm Substation and the proposed Finneywood 500 kV/230 kV Substation
  - Right of way needs: ~120' wide
  - An additional 230 kV transmission line may be needed in this corridor in the future



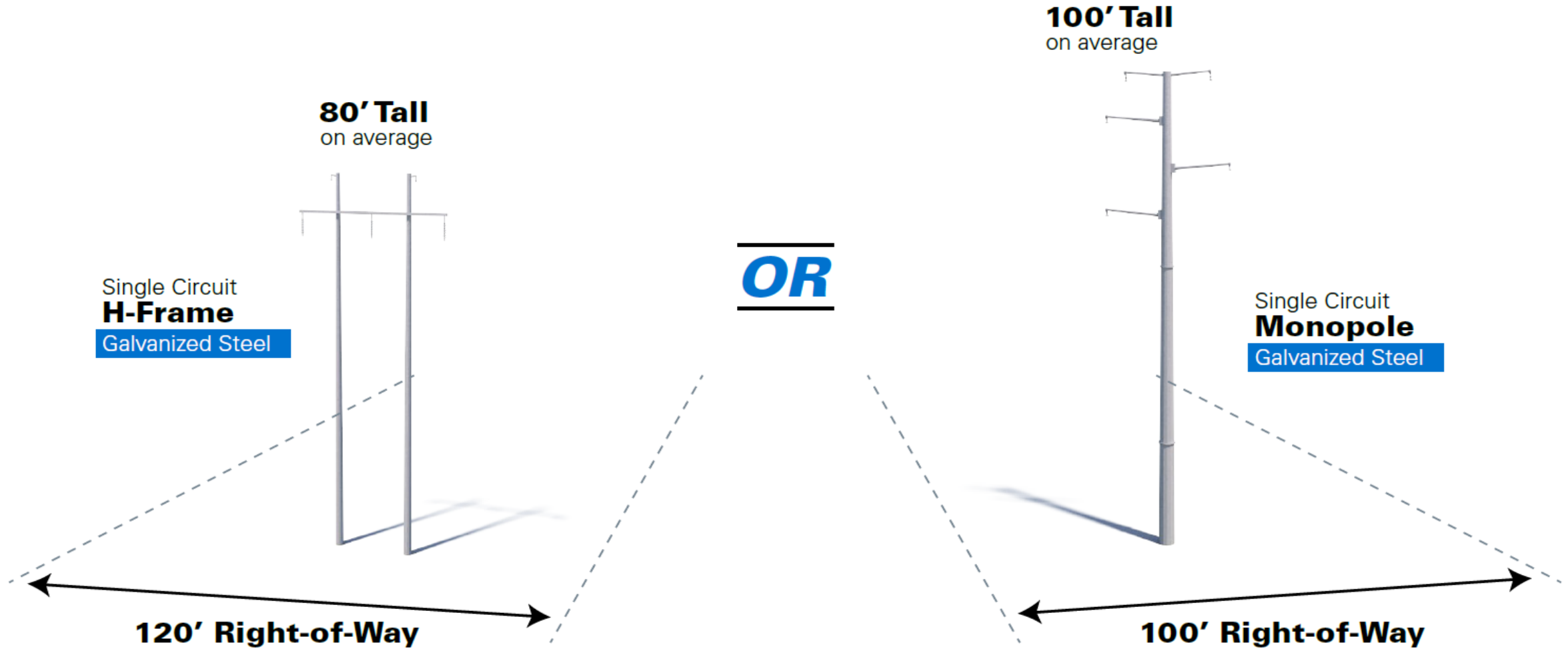
# Clover - Butler Farm Typical Structures



Visualization is for discussion purposes only. Final design is subject to change pending public, engineering, and regulatory review.

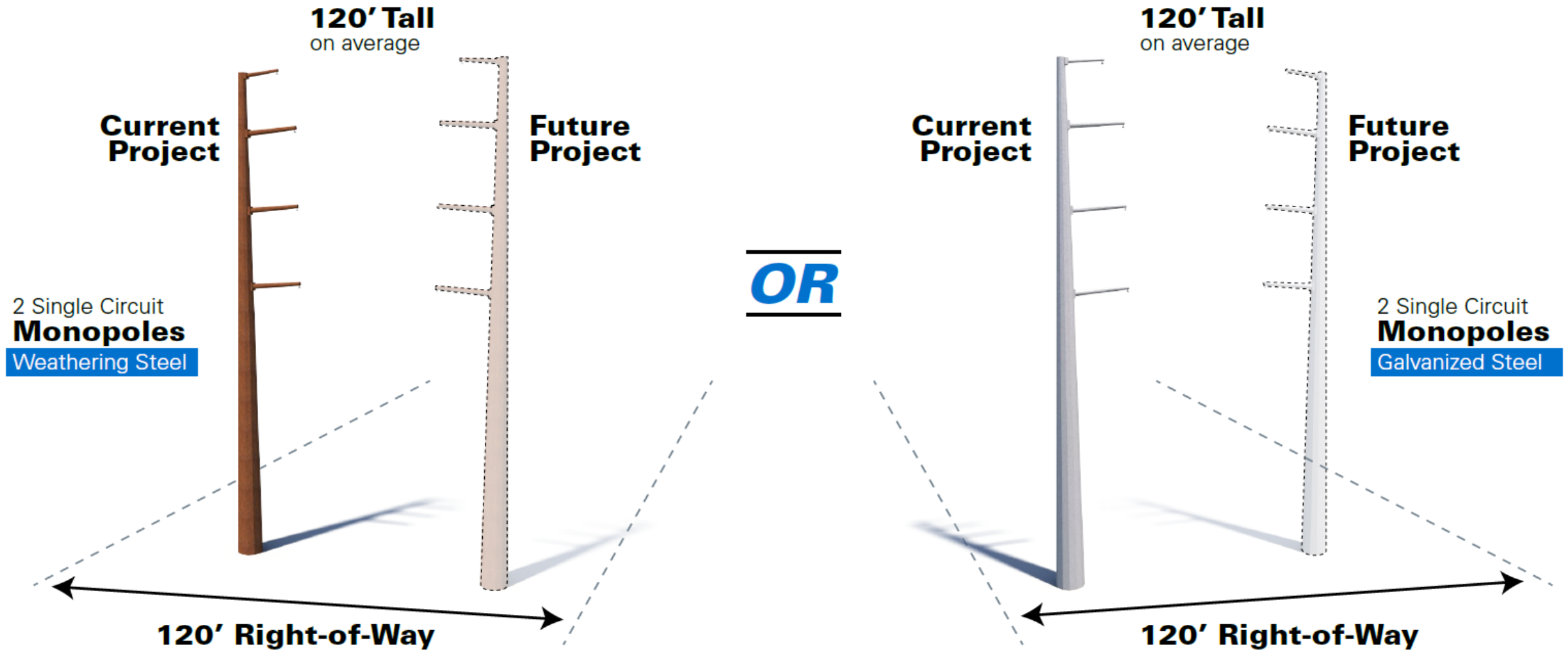


# Clover - Butler Farm Typical Structures



Visualization is for discussion purposes only. Final design is subject to change pending public, engineering, and regulatory review.

# Finneywood - Butler Farm Typical Structures



Visualization is for discussion purposes only. Final design is subject to change pending public, engineering, and regulatory review.

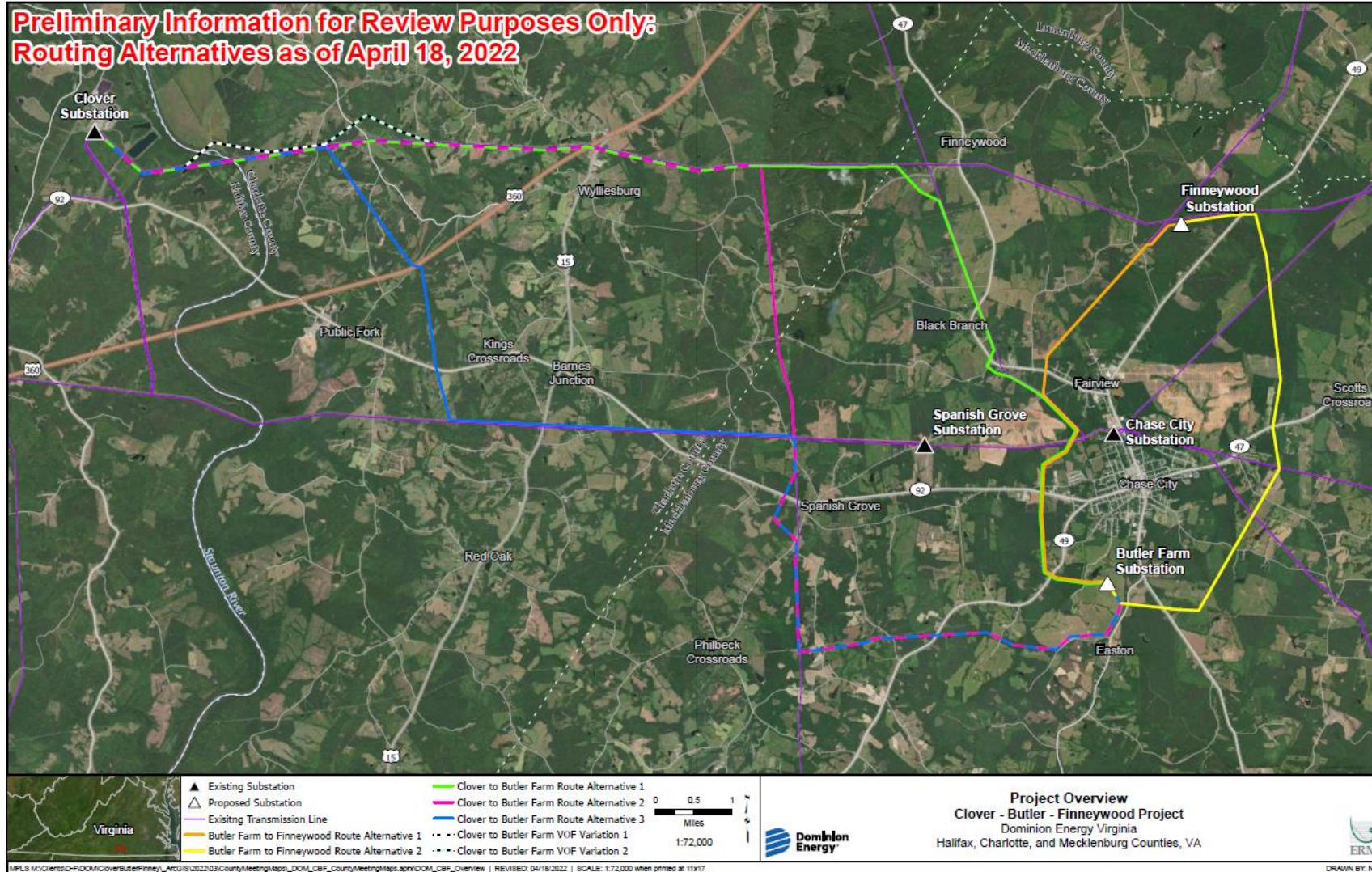
## Foundational Principles

- Process always begins with review of existing rights of way
- Respect the land use of the property owners
- Colocate with other infrastructure, where appropriate
- Stay close to property boundaries
- Minimize impact on private property, and environmental, historic, cultural and scenic resources





# Route Options





# Butler Farm

Transmission Line Project

## Aerial Rendering 1

Clover to Butler Farm

### Typical Structure:

80' - Single-Circuit H-Frame

### Right-of-Way Width:

120 Feet

### Structure Material:

Weathering Steel

### Viewing Direction:

East

Visualization is for discussion purposes only.  
Final design is subject to change pending public,  
engineering, and regulatory review.



Existing Conditions



Proposed Conditions





Existing Conditions



Proposed Conditions

# Butler Farm

Transmission Line Project

## Aerial Rendering 1

Clover to Butler Farm

**Typical Structure:**

100' Single-Circuit Monopole

**Right-of-Way Width:**

100 Feet

**Structure Material:**

Galvanized Steel

**Viewing Direction:**

East

Visualization is for discussion purposes only.  
Final design is subject to change pending public,  
engineering, and regulatory review.





- **Virginia State Corporation Commission (SCC):** Certificate of Public Convenience and Necessity
  - Alternatives Analysis
  - Routing Study
  - Department of Environmental Quality Supplement and coordinated review
- **U.S. Army Corps of Engineers**
- **Other Agency Review**
  - Department of Environmental Quality (DEQ)
  - Virginia Marine Resources Commission (VMRC)
  - Virginia Department of Transportation (VDOT)
- **Local Permitting Requirements**
  - Substations on Data Center property/part of developer's site plans
  - New Finneywood 500 kV/230 kV substation

# Transmission Line Planning and Public Engagement Process

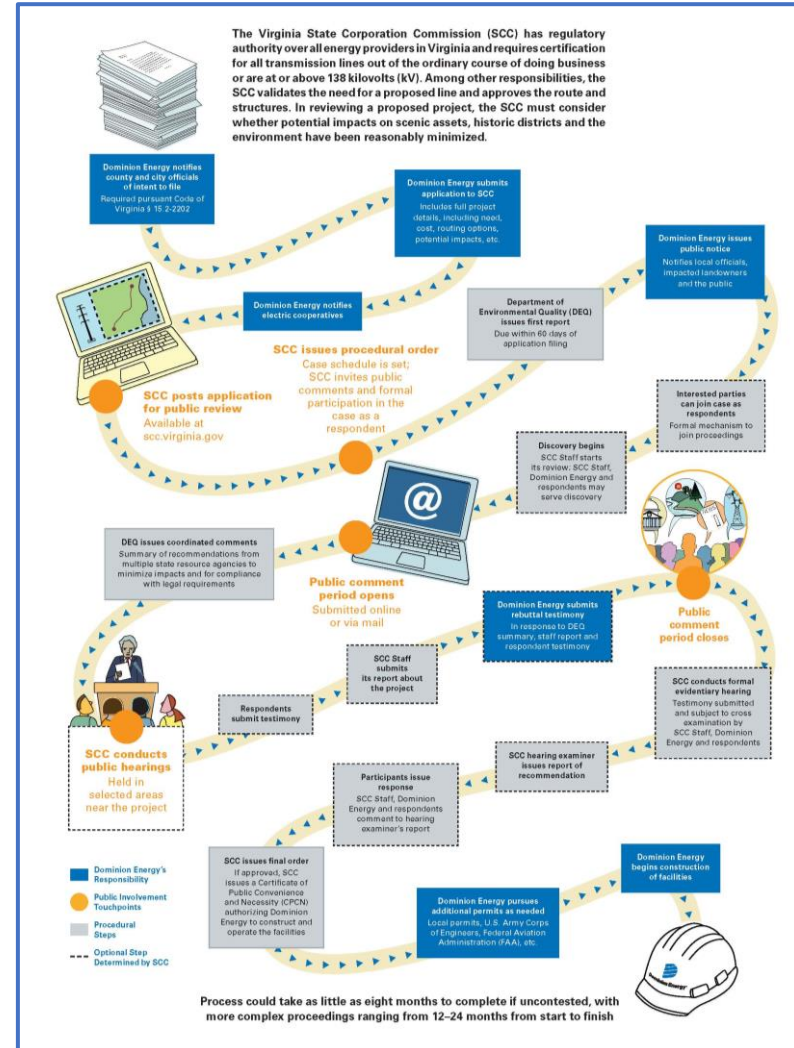
## SCC Application



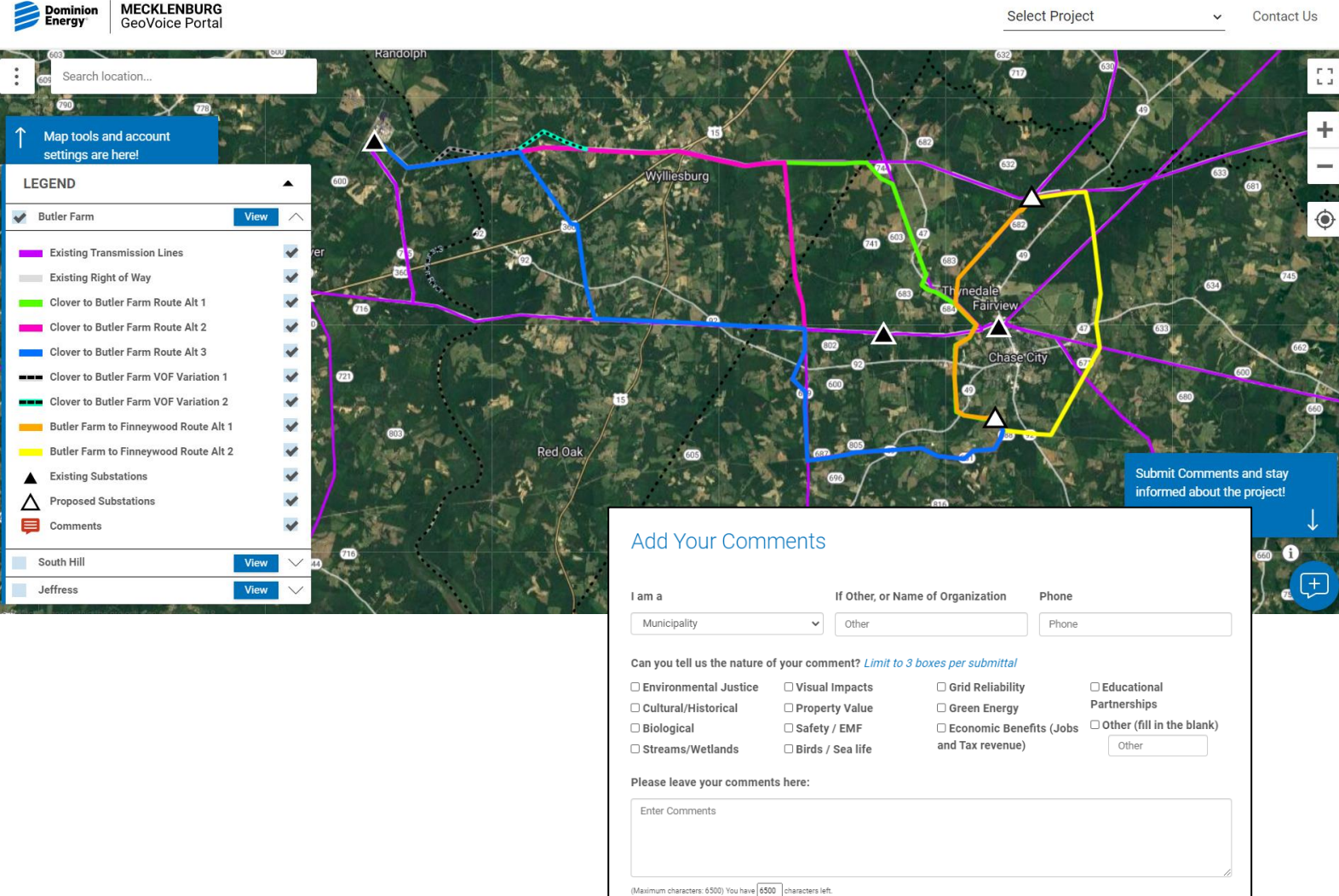
Opportunities for public involvement throughout the process, including public hearings



Process could take as little as eight months to complete if uncontested, with more complex proceedings ranging from 12–24 months from start to finish



- [DominionEnergy.com/butlerfarm](https://www.dominionenergy.com/butlerfarm)
- Review the study areas
- Interactive mapping tool
- Evolves as routing options become available and are refined
- Add comments, provide input or share insight on the location of important personal concerns or natural and historical resources
- Track project development and receive updates



The screenshot displays the Dominion Energy MECKLENBURG GeoVoice Portal. At the top, there is a search bar and a 'Select Project' dropdown menu. The main map area shows a satellite view of a region with several colored lines representing different routing options: purple for existing transmission lines, green for 'Clover to Butler Farm Route Alt 1', pink for 'Clover to Butler Farm Route Alt 2', blue for 'Clover to Butler Farm Route Alt 3', black for 'Clover to Butler Farm VOF Variation 1', dark green for 'Clover to Butler Farm VOF Variation 2', orange for 'Butler Farm to Finneywood Route Alt 1', and yellow for 'Butler Farm to Finneywood Route Alt 2'. A legend on the left side of the map lists these options and other features like existing and proposed substations. A 'Submit Comments and stay informed about the project!' button is visible in the bottom right corner of the map area.

**Add Your Comments**

I am a  If Other, or Name of Organization  Phone

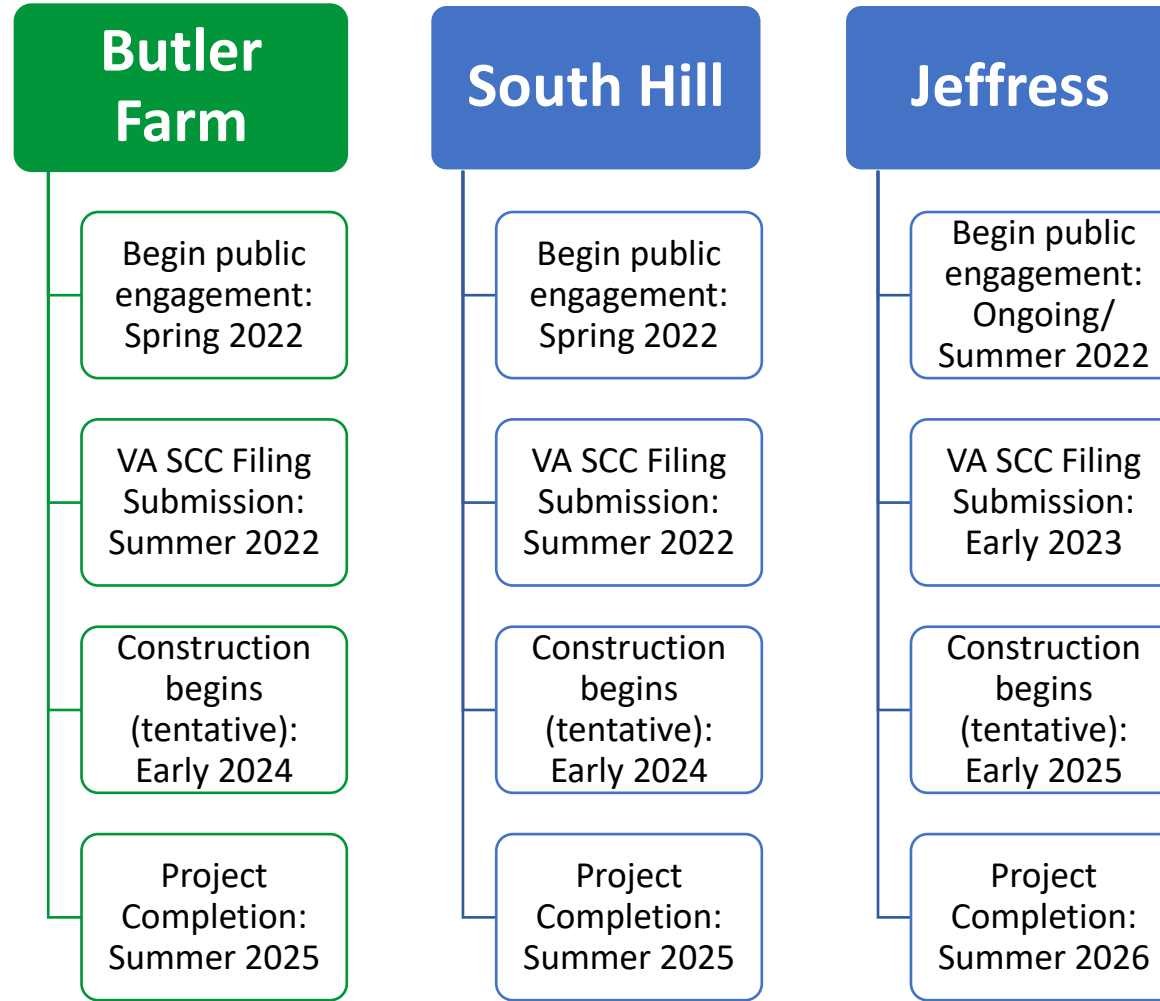
Can you tell us the nature of your comment? *Limit to 3 boxes per submittal*

<input type="checkbox"/> Environmental Justice	<input type="checkbox"/> Visual Impacts	<input type="checkbox"/> Grid Reliability	<input type="checkbox"/> Educational Partnerships
<input type="checkbox"/> Cultural/Historical	<input type="checkbox"/> Property Value	<input type="checkbox"/> Green Energy	<input type="checkbox"/> Other (fill in the blank)
<input type="checkbox"/> Biological	<input type="checkbox"/> Safety / EMF	<input type="checkbox"/> Economic Benefits (Jobs and Tax revenue)	<input type="text" value="Other"/>
<input type="checkbox"/> Streams/Wetlands	<input type="checkbox"/> Birds / Sea life		

Please leave your comments here:

(Maximum characters: 6500) You have  characters left.





# What's Next?

- Review routing options and speak to subject matter experts
- Another in-person Community Meeting later this summer once public input is received and incorporated into project planning
- For questions throughout the project, send an email to [powerline@dominionenergy.com](mailto:powerline@dominionenergy.com) or call **888-291-0190**
- For more information and to access GeoVoice, please visit: [DominionEnergy.com/butlerfarm](https://www.dominionenergy.com/butlerfarm)



**Thank you for joining!**