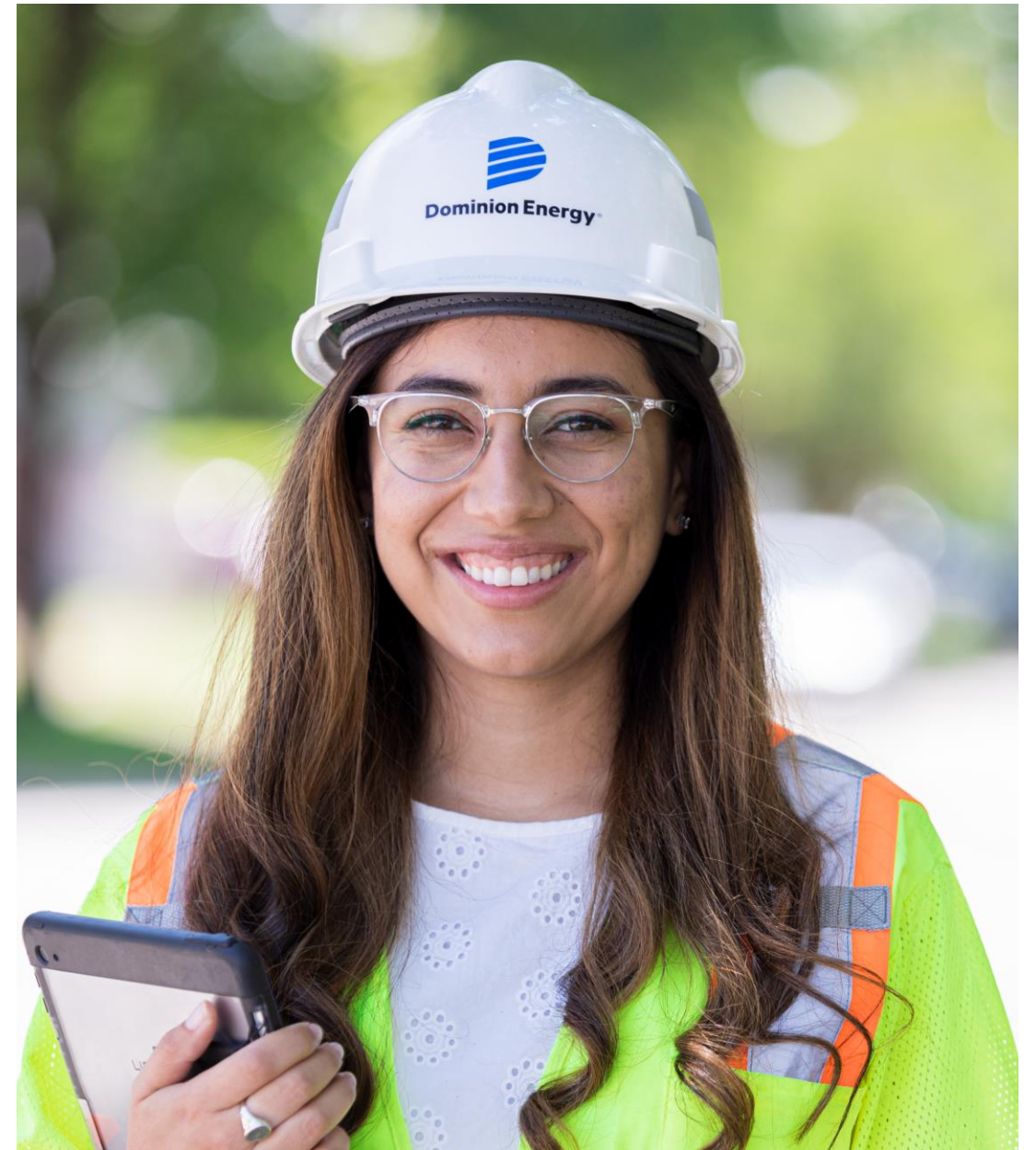


# Meeting Virginia's Energy Needs



**Dominion  
Energy®**

Actions Speak Louder



# Electric Transmission Line Planning and Approval Process

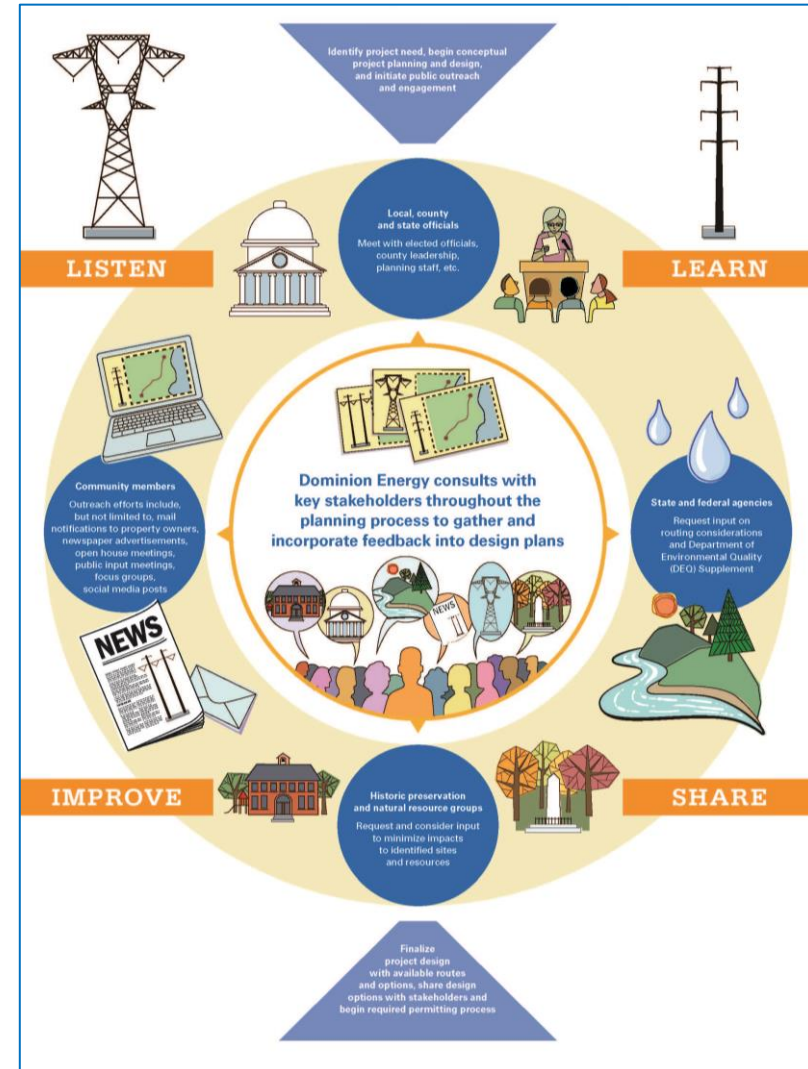


## Relationships

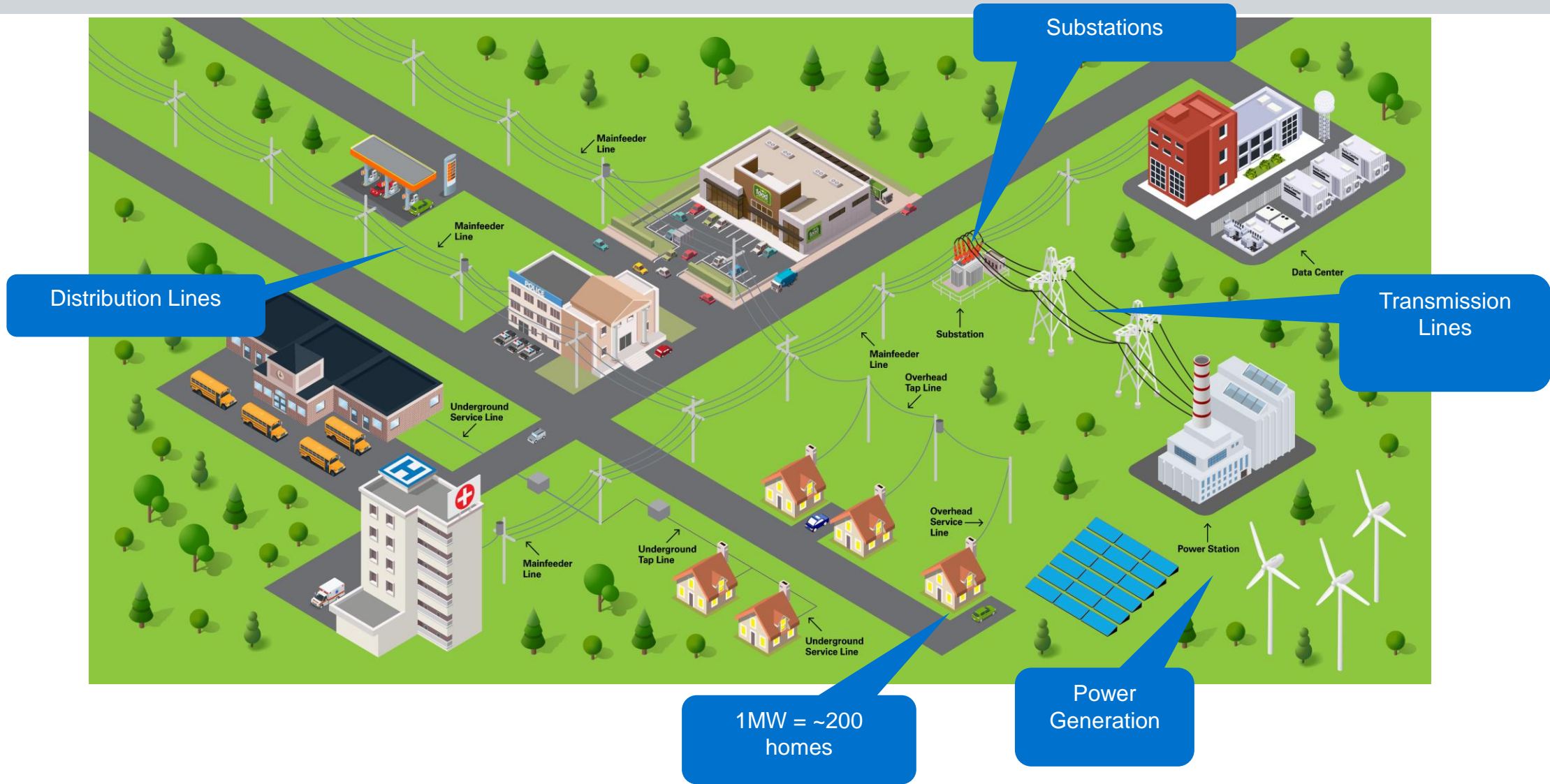
- Value what the community values
- Seek available mutual benefits

## Trust

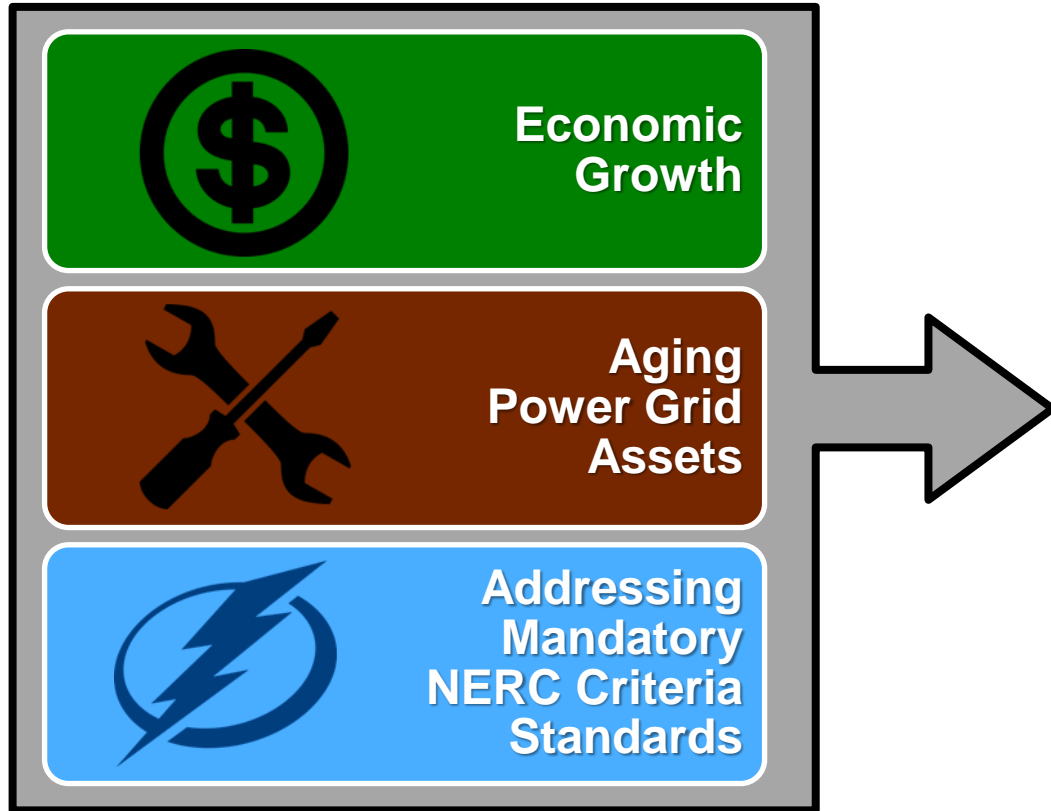
- Discussion, connection and empathy
- Stakeholders' willingness to compromise



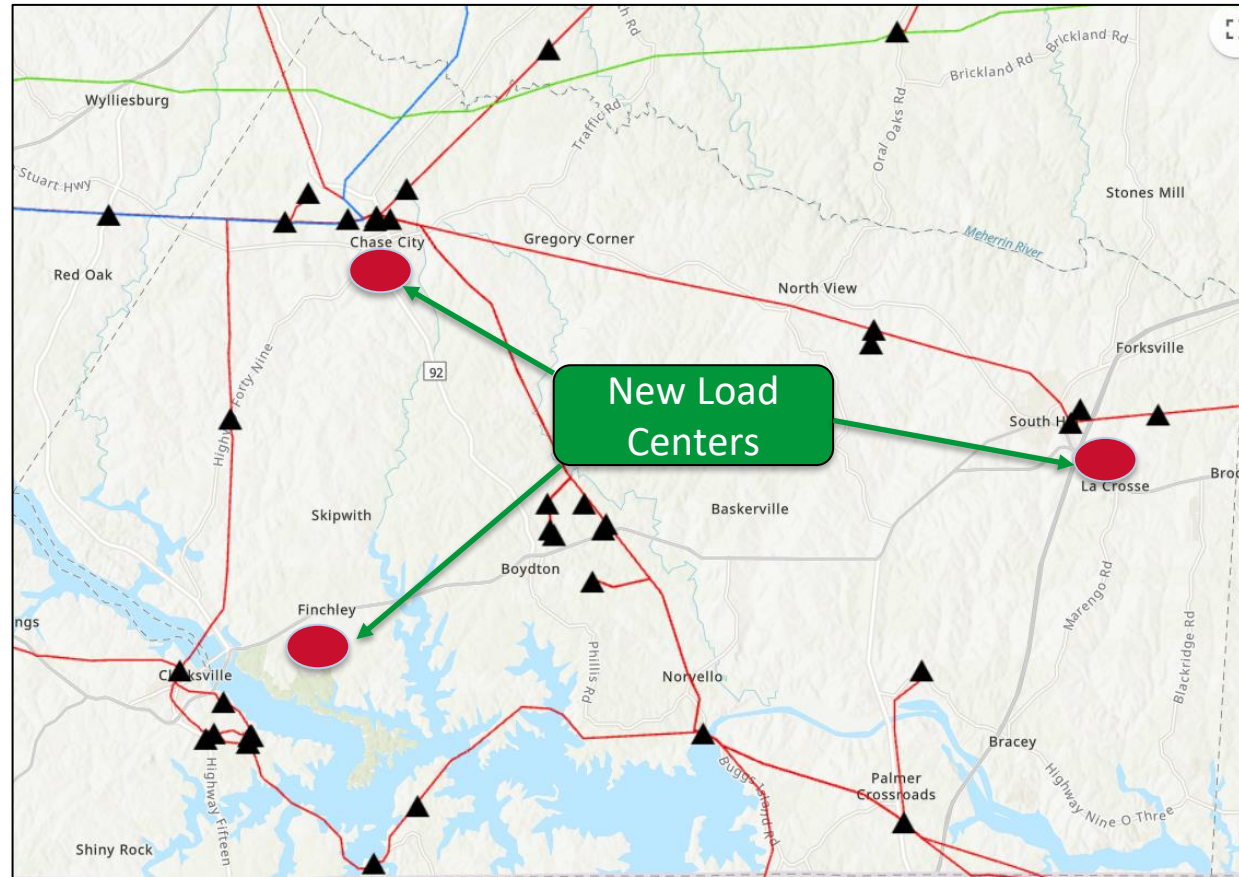
# The Grid and Obligation to Serve



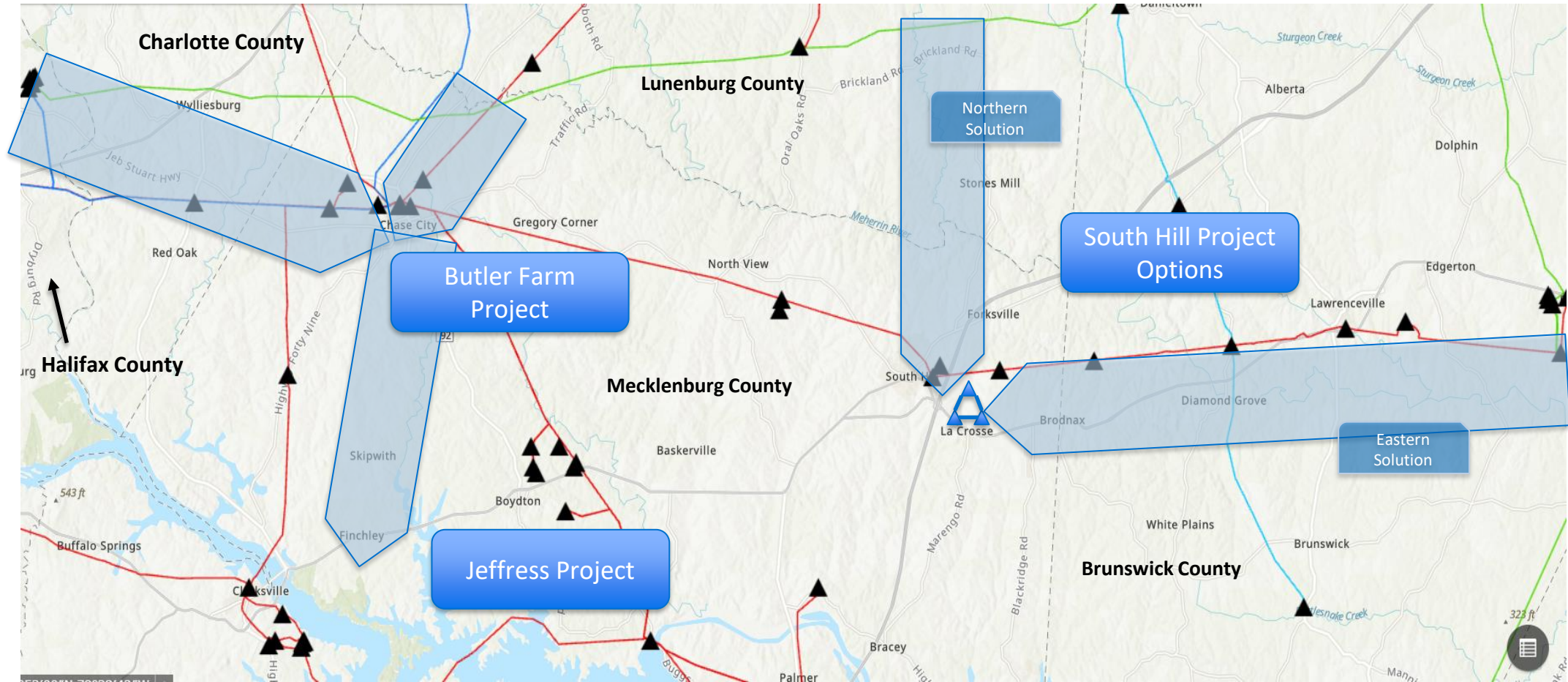
# Forces Driving Infrastructure Need



# Current System



# Southside Infrastructure Enhancements Overview

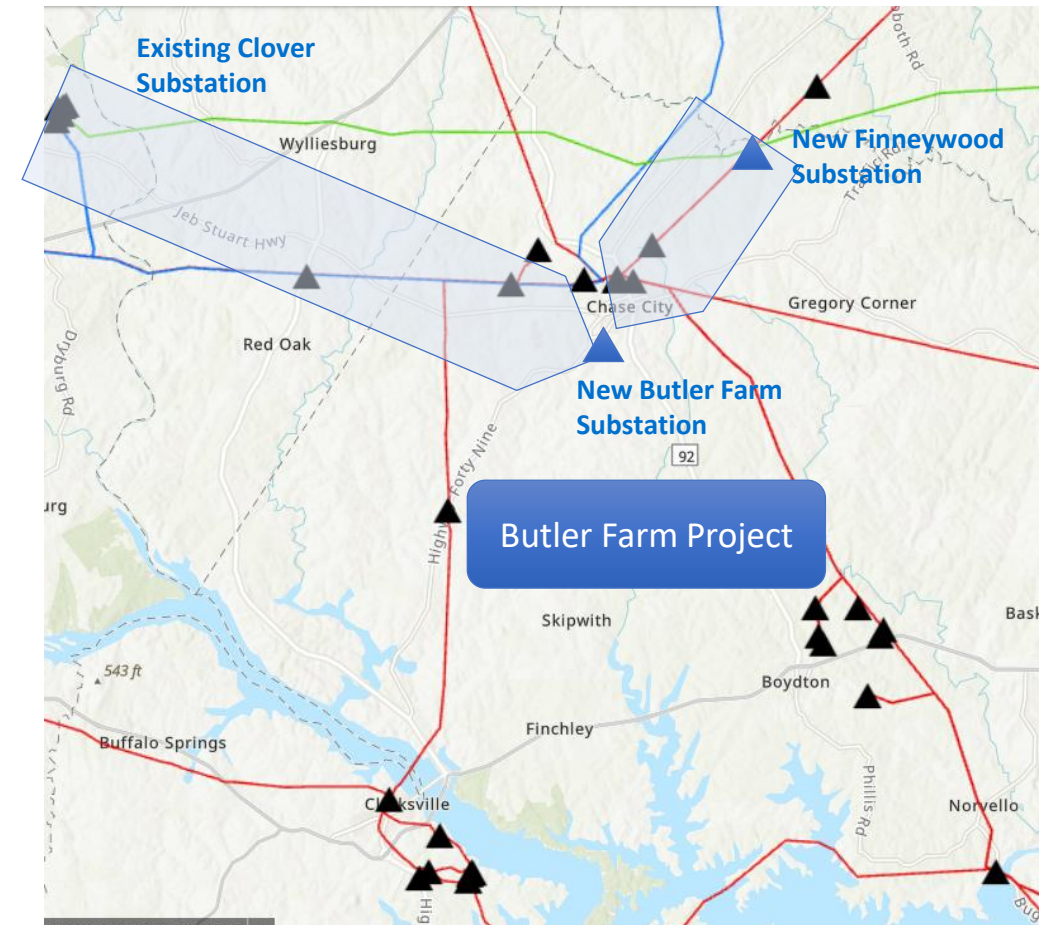


# Butler Farm Project Scope

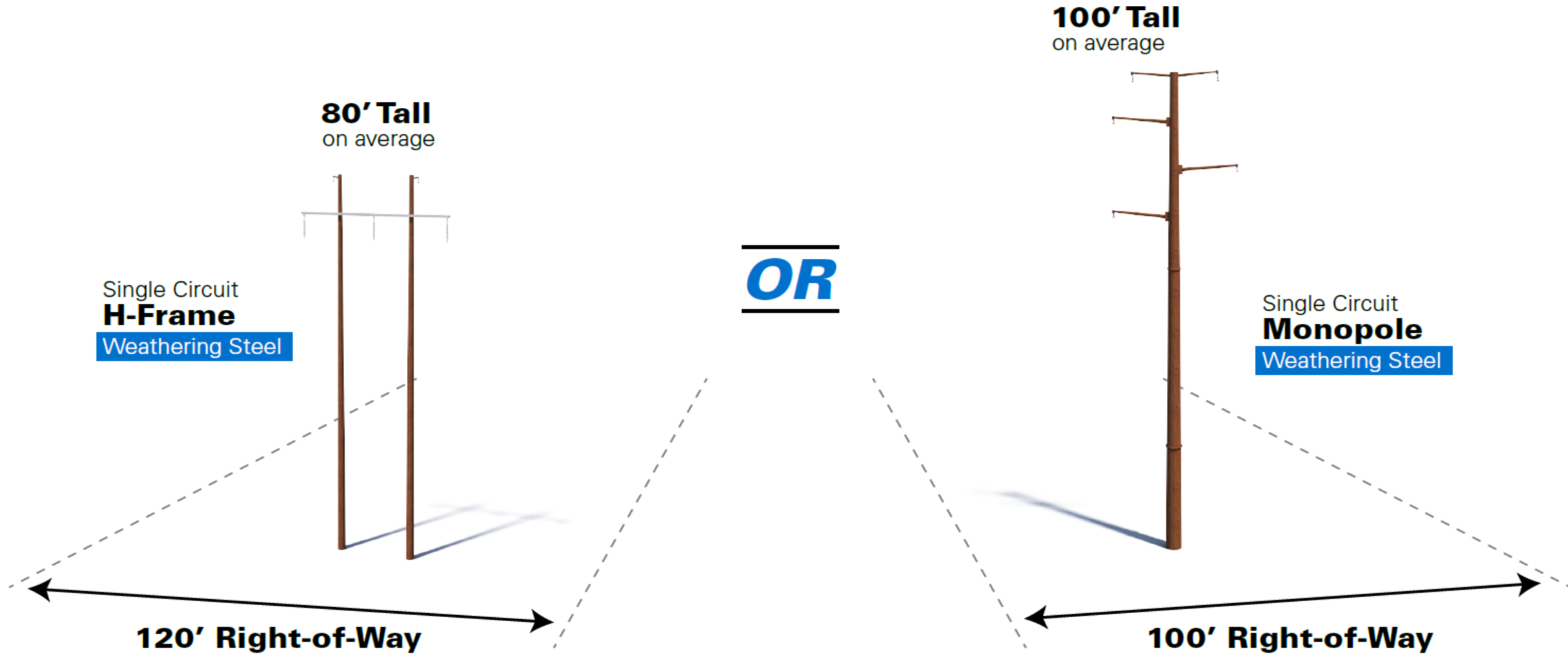
Charlotte, Halifax, and Mecklenburg counties

## Project Goal Scope:

- **Clover-Butler Farm:** Build approximately 18 miles of new single-circuit 230 kV transmission line from the existing Clover Substation to the proposed Butler Farm Substation
  - Right of way needs: ~100' wide
- **Finneywood-Butler Farm:** Build approximately 7 miles of new single-circuit 230 kV transmission line right of way between the proposed Butler Farm Substation and the proposed Finneywood 500 kV/230 kV Substation
  - Right of way needs: ~120' wide
  - An additional 230 kV transmission line may be needed in this corridor in the future



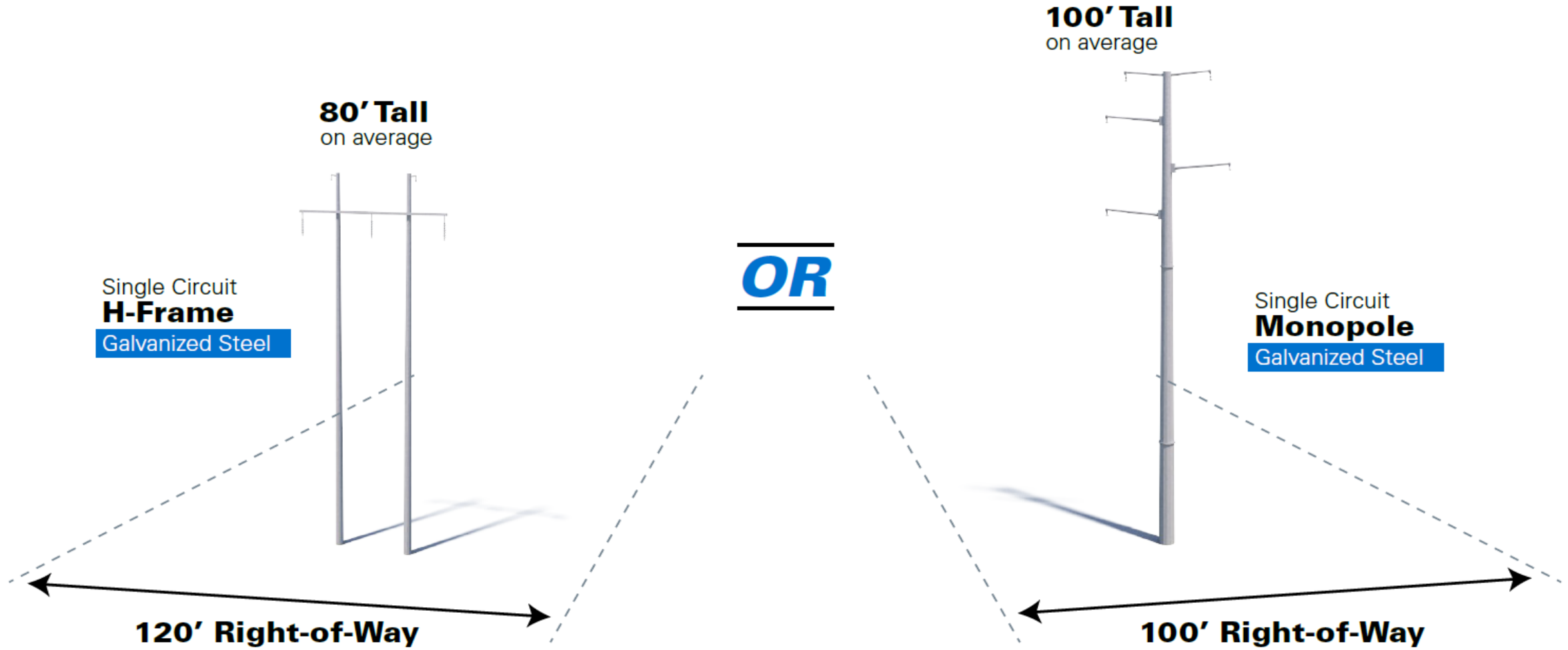
# Clover - Butler Farm Typical Structures



Visualization is for discussion purposes only. Final design is subject to change pending public, engineering, and regulatory review.

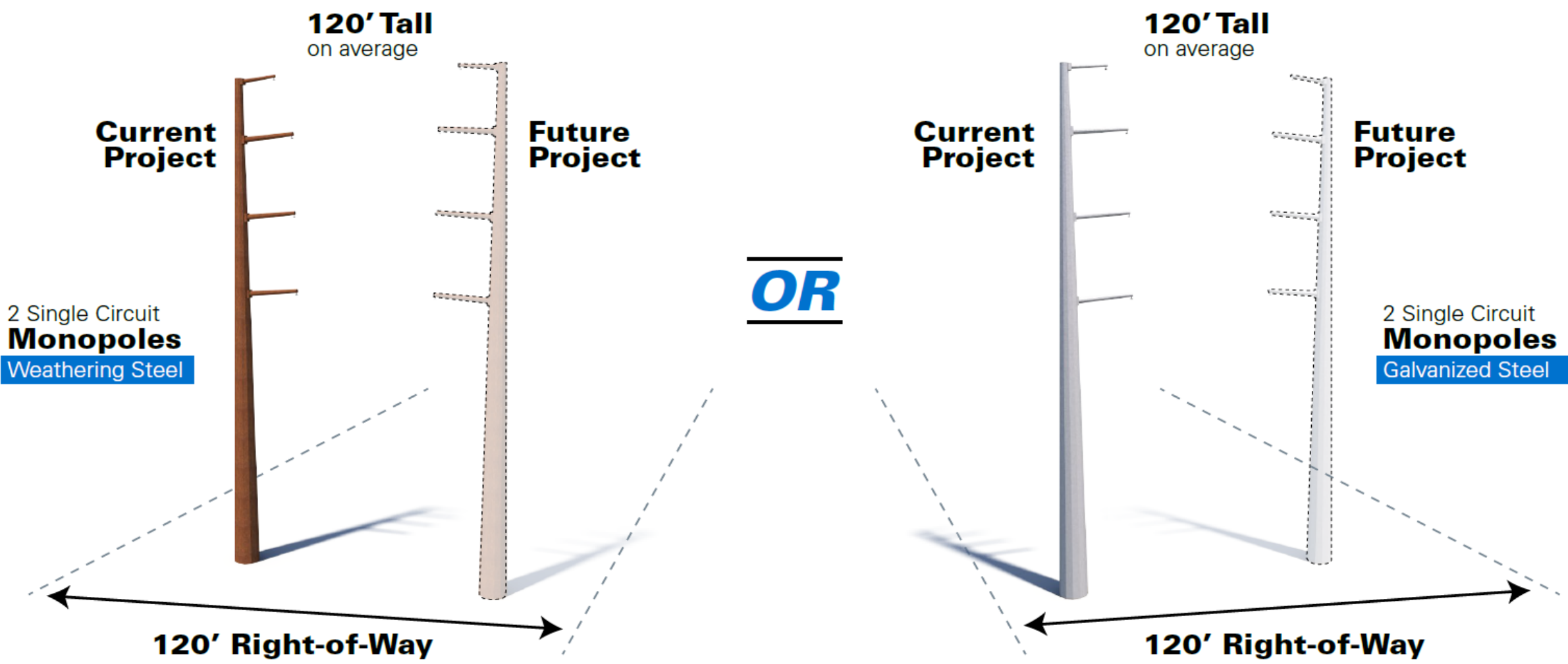


# Clover - Butler Farm Typical Structures



Visualization is for discussion purposes only. Final design is subject to change pending public, engineering, and regulatory review.

# Finneywood - Butler Farm Typical Structures



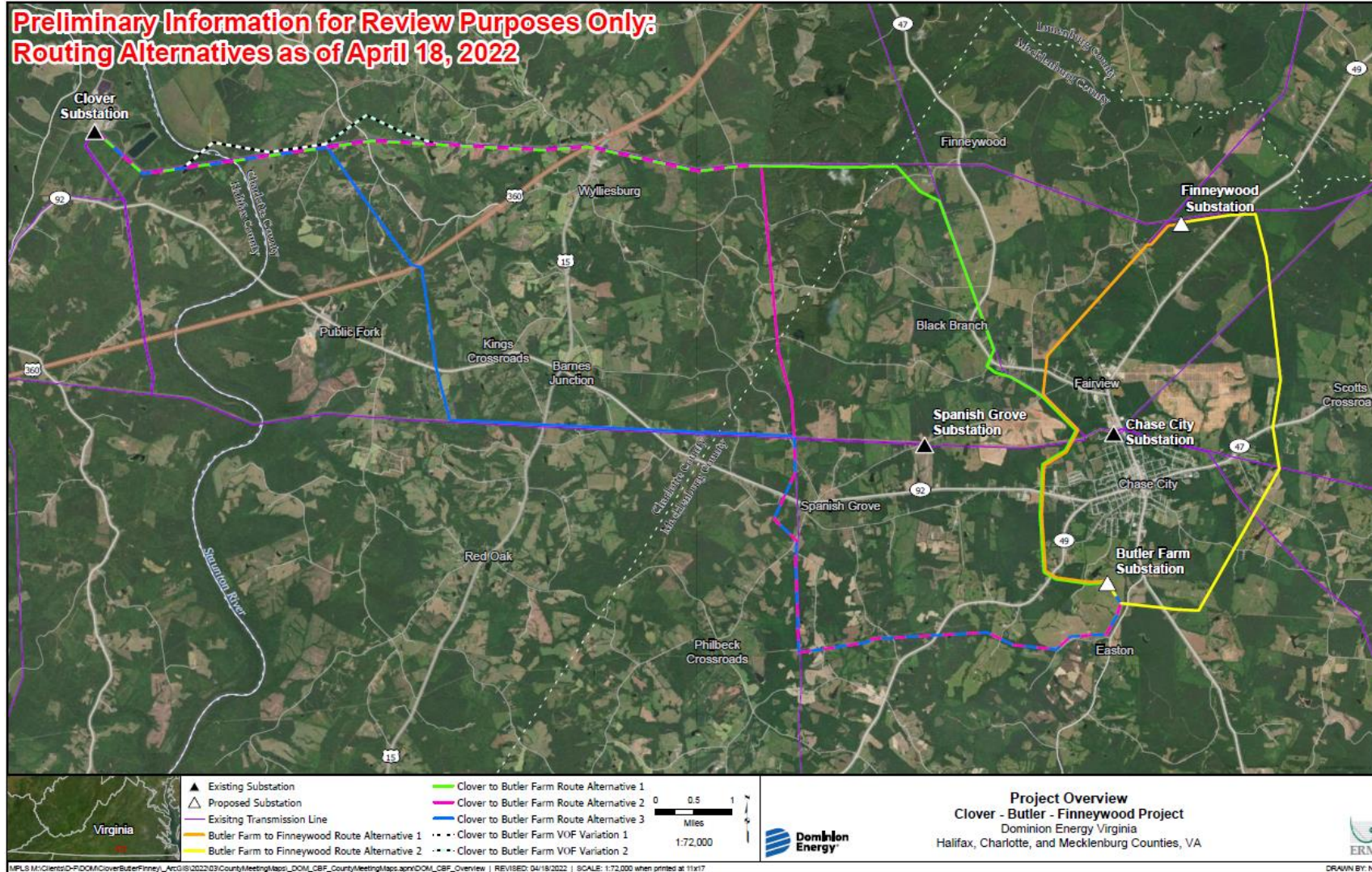
Visualization is for discussion purposes only. Final design is subject to change pending public, engineering, and regulatory review.

## Foundational Principles

- Process always begins with review of existing rights of way
- Respect the land use of the property owners
- Co-locate with other infrastructure, where appropriate
- Stay close to property boundaries
- Minimize impact on private property, and environmental, historic, cultural and scenic resources



# Route Options



# Butler Farm

Transmission Line Project

## Aerial Rendering 1

Clover to Butler Farm

### Typical Structure:

80' - Single-Circuit H-Frame

### Right-of-Way Width:

120 Feet

### Structure Material:

Weathering Steel

### Viewing Direction:

East

Visualization is for discussion purposes only.  
Final design is subject to change pending public,  
engineering, and regulatory review.



Existing Conditions



Proposed Conditions



Existing Conditions



Proposed Conditions

# Butler Farm

Transmission Line Project

## Aerial Rendering 1

Clover to Butler Farm

### Typical Structure:

100' Single-Circuit Monopole

### Right-of-Way Width:

100 Feet

### Structure Material:

Galvanized Steel

### Viewing Direction:

East

Visualization is for discussion purposes only.  
Final design is subject to change pending public,  
engineering, and regulatory review.



- **Virginia State Corporation Commission (SCC):** Certificate of Public Convenience and Necessity
  - Alternatives Analysis
  - Routing Study
  - Department of Environmental Quality Supplement and coordinated review
- **U.S. Army Corps of Engineers**
- **Other Agency Review**
  - Department of Environmental Quality (DEQ)
  - Virginia Marine Resources Commission (VMRC)
  - Virginia Department of Transportation (VDOT)
- **Local Permitting Requirements**
  - Substations on Data Center property/part of developer's site plans
  - New Finneywood 500 kV/230 kV substation

# Transmission Line Planning and Public Engagement Process

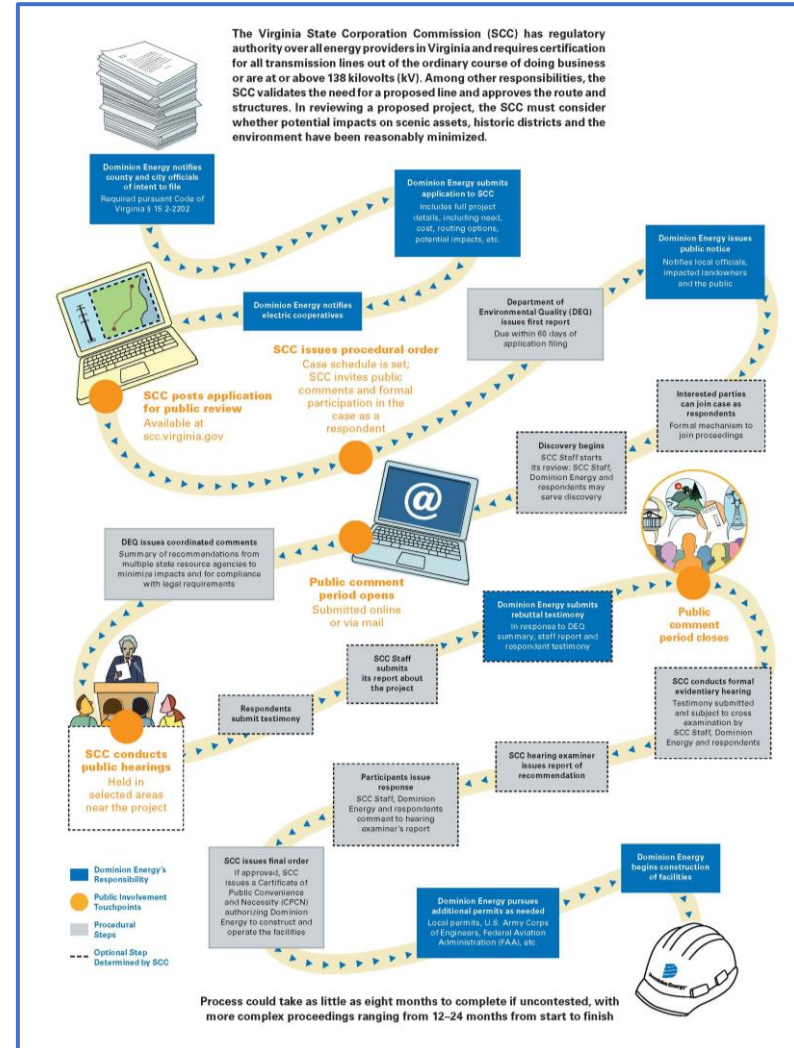
## SCC Application



Opportunities for public involvement throughout the process, including public hearings

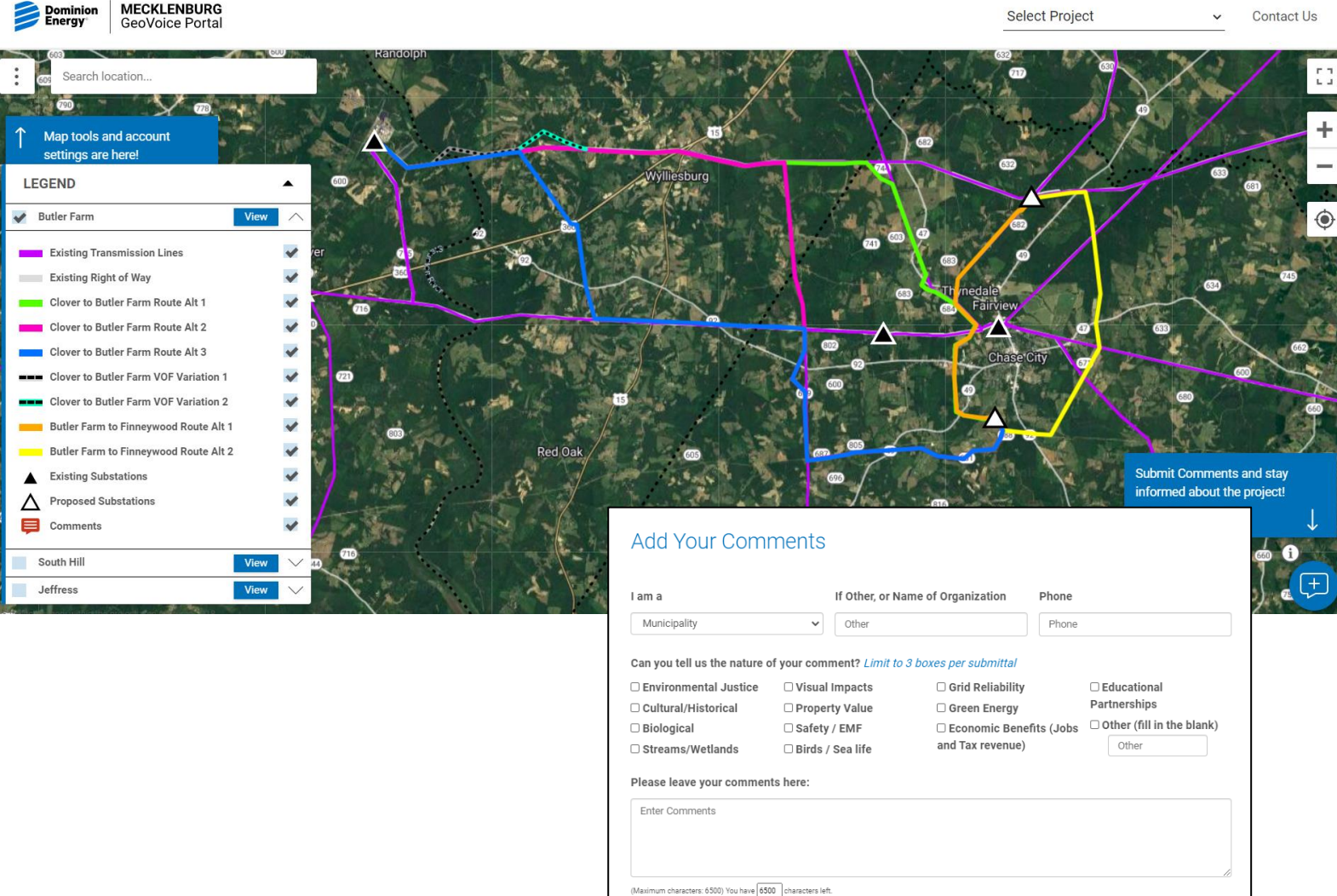


Process could take as little as eight months to complete if uncontested, with more complex proceedings ranging from 12–24 months from start to finish



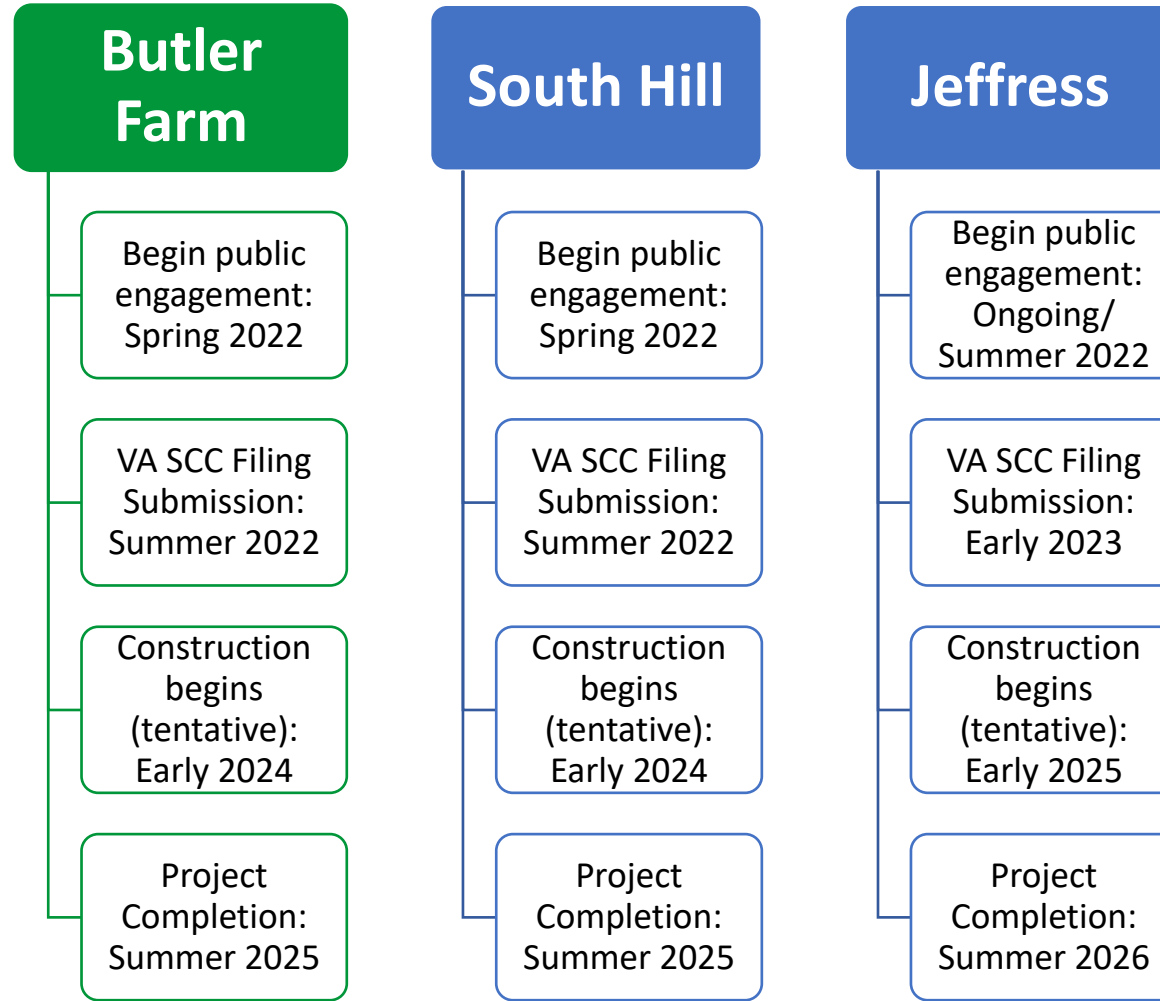


- [DominionEnergy.com/butlerfarm](https://www.dominionenergy.com/butlerfarm)
- Review the study areas
- Interactive mapping tool
- Evolves as routing options become available and are refined
- Add comments, provide input or share insight on the location of important personal concerns or natural and historical resources
- Track project development and receive updates



The screenshot displays the Dominion Energy MECKLENBURG GeoVoice Portal. At the top, there is a search bar and a 'Select Project' dropdown menu. The main area is a satellite map showing several colored lines representing different routing alternatives for the Butler Farm project. A legend on the left side of the map lists these alternatives, including 'Existing Transmission Lines', 'Existing Right of Way', and various 'Clover to Butler Farm' and 'Butler Farm to Finneywood' route alternatives. It also includes symbols for 'Existing Substations' and 'Proposed Substations'. A 'Submit Comments and stay informed about the project!' button is visible in the bottom right corner of the map area.

The 'Add Your Comments' form is overlaid on the bottom right of the map. It includes fields for 'I am a' (with a dropdown menu set to 'Municipality'), 'If Other, or Name of Organization' (with a text input field set to 'Other'), and 'Phone' (with a text input field). Below these fields, there is a section titled 'Can you tell us the nature of your comment? *Limit to 3 boxes per submittal*' with several checkboxes: Environmental Justice, Cultural/Historical, Biological, Streams/Wetlands, Visual Impacts, Property Value, Safety / EMF, Birds / Sea life, Grid Reliability, Green Energy, Economic Benefits (Jobs and Tax revenue), and Educational Partnerships. There is also an 'Other (fill in the blank)' text input field. At the bottom of the form, there is a large text area labeled 'Please leave your comments here:' with the placeholder text 'Enter Comments'. A character count at the very bottom indicates '(Maximum characters: 6500) You have 6500 characters left.'



# What's Next?

- Review routing options and speak to subject matter experts
- Another in-person Community Meeting later this summer once public input is received and incorporated into project planning
- For questions throughout the project, send an email to [powerline@dominionenergy.com](mailto:powerline@dominionenergy.com) or call **888-291-0190**
- For more information and to access GeoVoice, please visit: [DominionEnergy.com/butlerfarm](https://www.dominionenergy.com/butlerfarm)



**Thank you for joining!**