



June 10, 2023

Butler Farm 230 kV Electric Transmission Line and Substation Project

Dear Neighbor:

At Dominion Energy, we would like to provide you an update on the Butler Farm 230 kV Electric Transmission Line and Substation Project. This project will allow Dominion Energy to maintain a safe, reliable, and secure electric grid while supporting data center development in Southside Virginia.

On Oct. 21, 2022, we filed an application with the Virginia State Corporation Commission (SCC) which identifies the proposed routes with alternatives. Two routes are needed for this project and will require new right of way. On May 31, 2023, the SCC issued a final order, approving the construction of our proposed routes listed in the filing. The routes listed are below.

- Clover to Butler Farm Route Alternative 1 (Green Route)
- Butler Farm to Finneywood Route Alternative 1 (Orange Route)

You can access our filed application and final order, along with other project information on our website, [DominionEnergy.com/butlerfarm](https://www.dominionenergy.com/butlerfarm). To view the SCC documents, select the 'Legal' tab at the top of the page.

In 2023, our project team will continue the planning process to prepare for construction. We will focus on permitting, real estate, and finalizing our engineering. We will continue our outreach efforts by sending projects updates and holding additional community meetings that will focus on what to expect during construction. We anticipate construction activity to begin in early 2024, with energization in mid-2025.

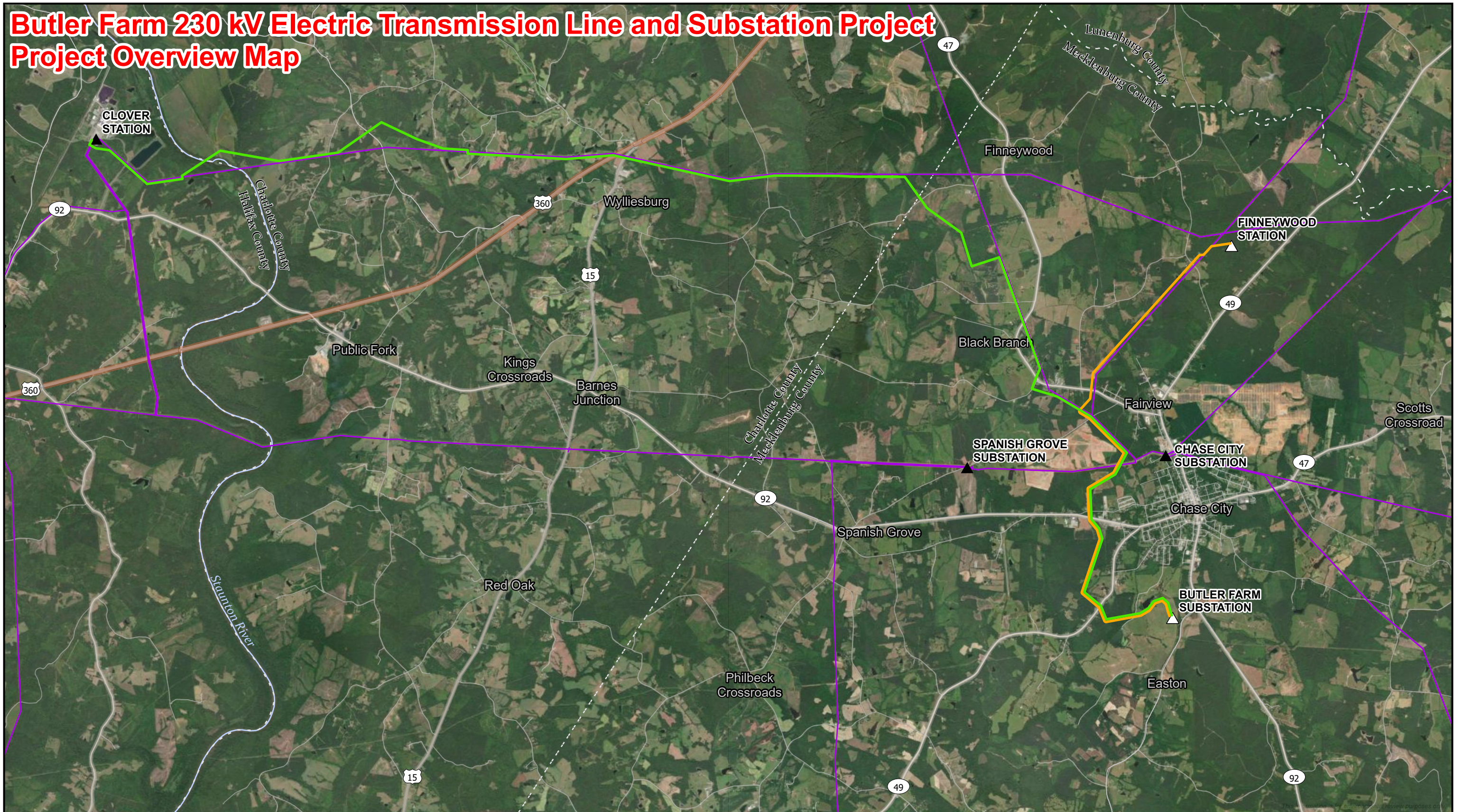
Thank you for your understanding while we plan for long-term reliability investments in your community. For questions, contact us by calling 888-291-0190 or sending an email to powerline@dominionenergy.com.

Sincerely,

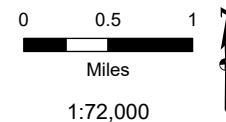
The Electric Transmission Project Team

Enclosure: Project Overview Map – SCC Approved Routes

Butler Farm 230 kV Electric Transmission Line and Substation Project Project Overview Map



- ▲ Existing Substation
- △ Proposed Substation
- Existing Transmission Line
- SCC Approved Butler Farm-Clover Route
- SCC Approved Butler Farm-Finneywood Route



Project Overview
Butler Farm 230 kV Electric Transmission Line and Substation Project
 Dominion Energy Virginia
 Halifax, Charlotte, and Mecklenburg Counties, VA

