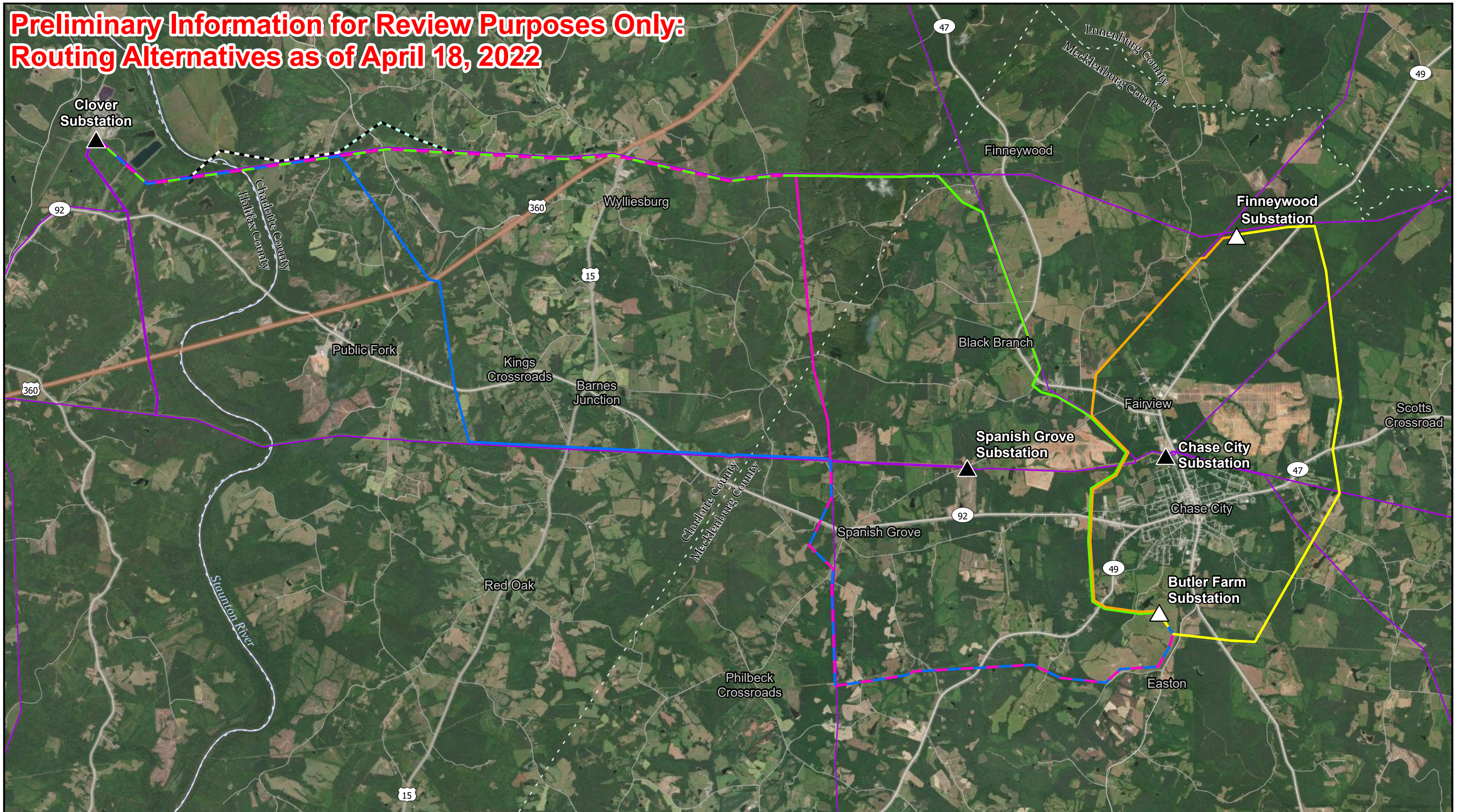
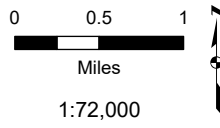


Preliminary Information for Review Purposes Only: Routing Alternatives as of April 18, 2022



- ▲ Existing Substation
- △ Proposed Substation
- Existing Transmission Line
- Clover to Butler Farm Route Alternative 1
- Clover to Butler Farm Route Alternative 2
- Clover to Butler Farm Route Alternative 3
- Butler Farm to Finneywood Route Alternative 1
- Butler Farm to Finneywood Route Alternative 2
- - - Clover to Butler Farm VOF Variation 1
- - - Clover to Butler Farm VOF Variation 2



Project Overview
Clover - Butler - Finneywood Project
 Dominion Energy Virginia
 Halifax, Charlotte, and Mecklenburg Counties, VA

