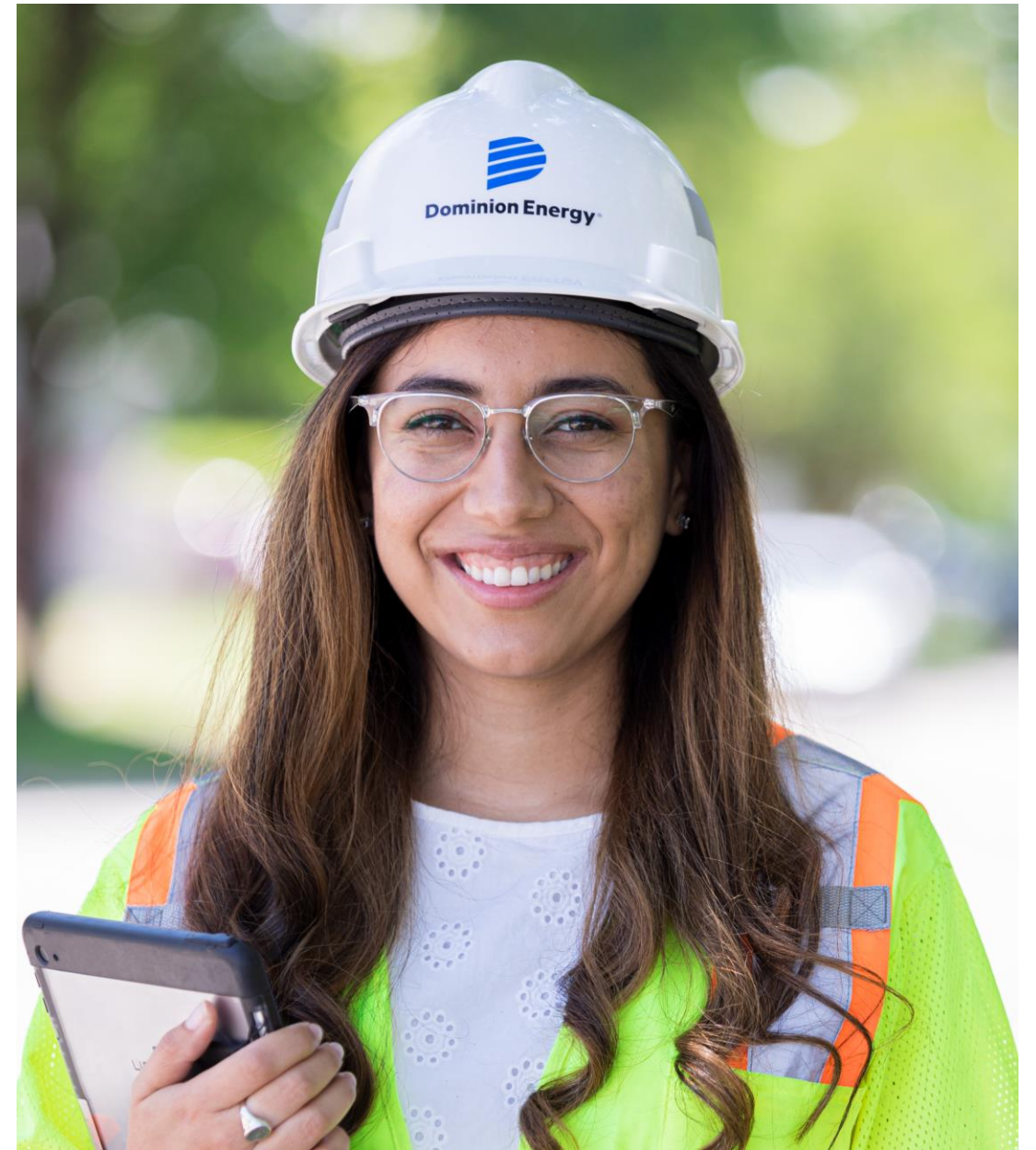
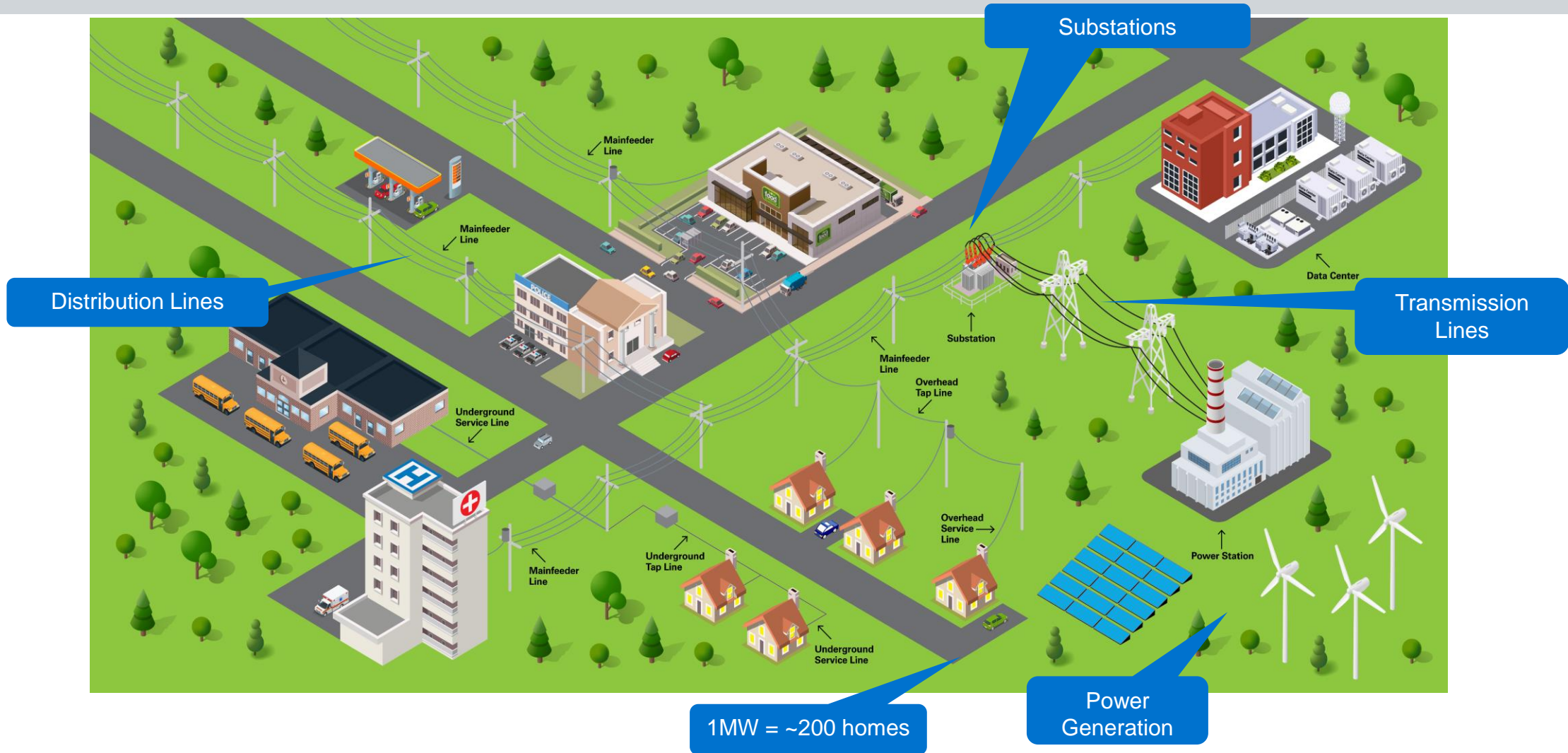


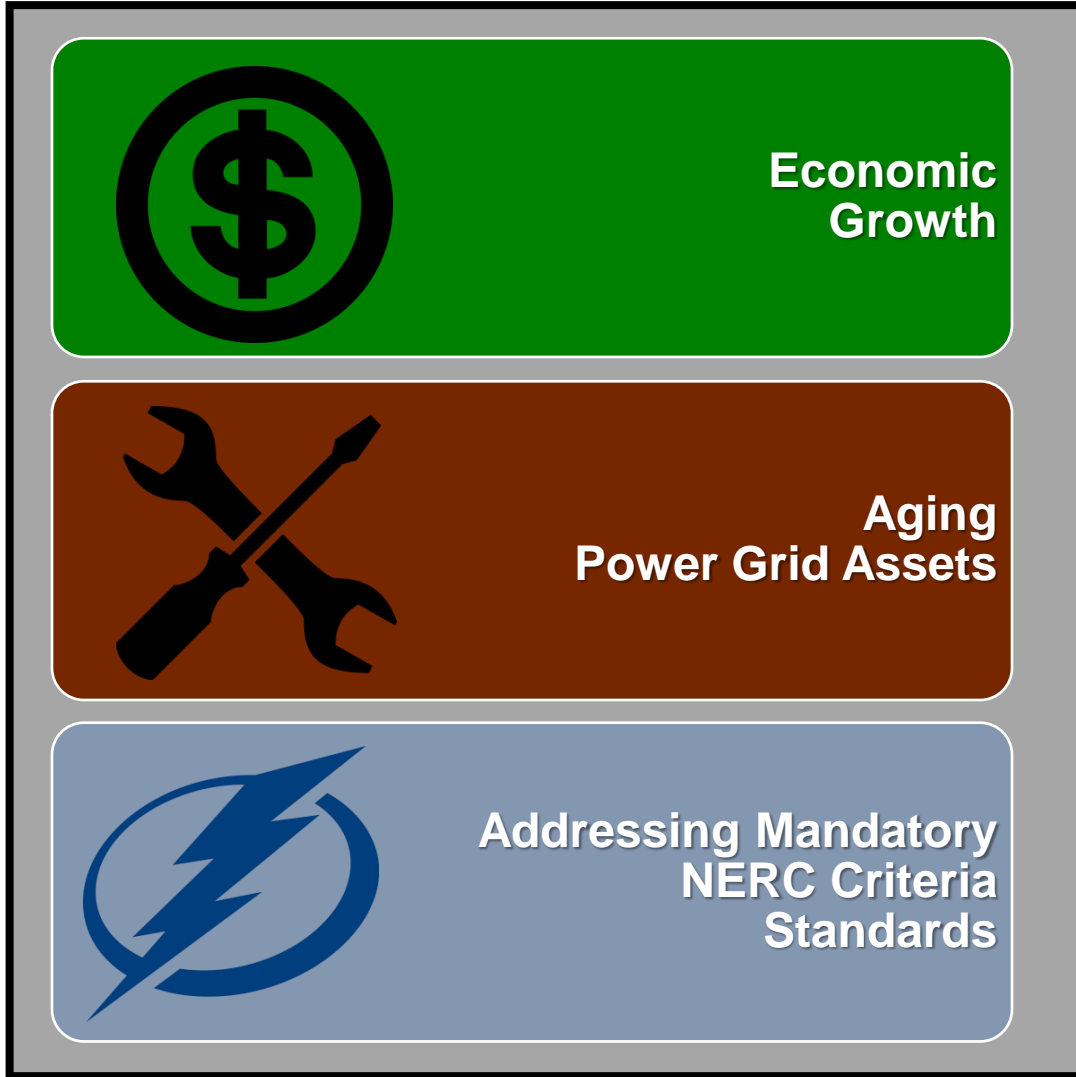
Meeting Virginia's Energy Needs



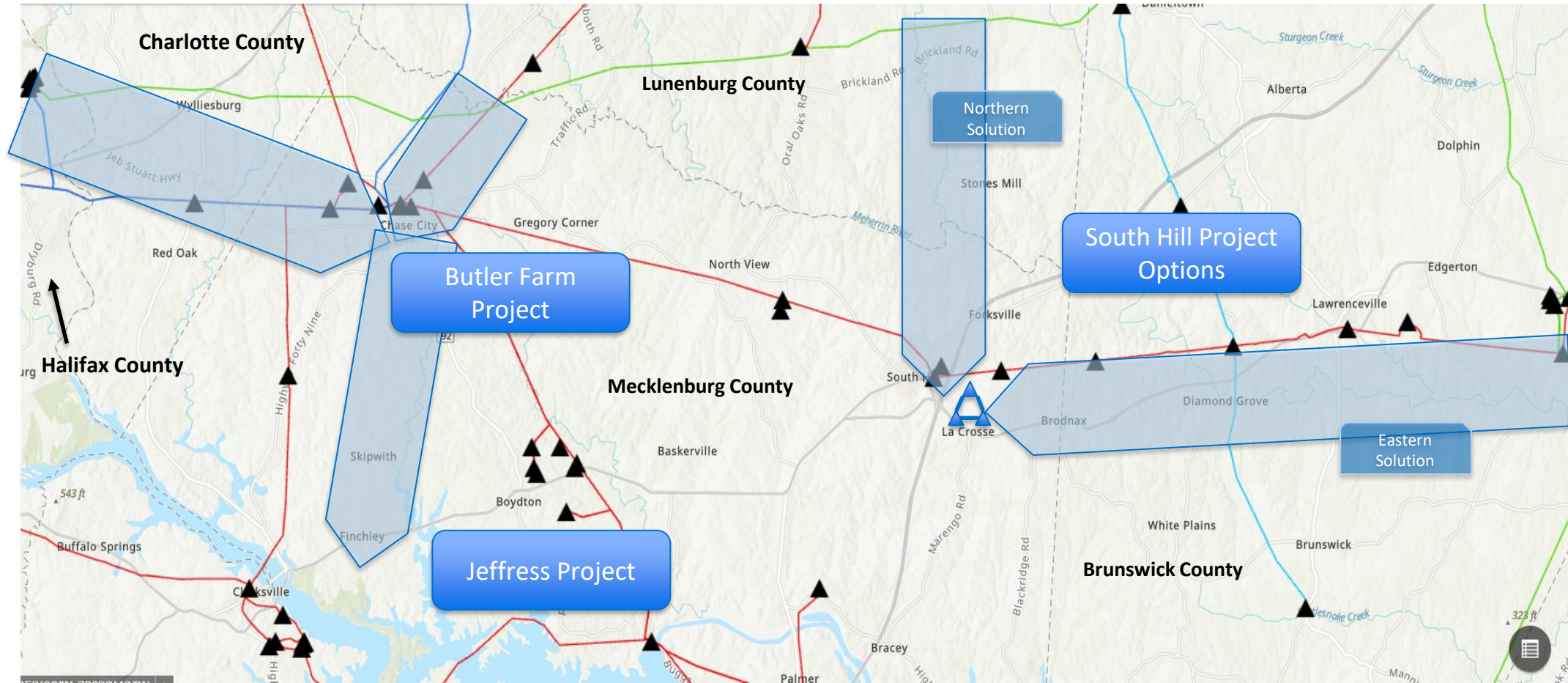
The Grid and Obligation to Serve



Forces Driving Infrastructure Need



Southside Infrastructure Enhancements Overview



Foundational Principles

- Process always begins with review of existing rights of way
- Respect the land use of the property owners
- Co-locate with other infrastructure, where appropriate
- Stay close to property boundaries
- Minimize impact on private property, and environmental, historic, cultural and scenic resources

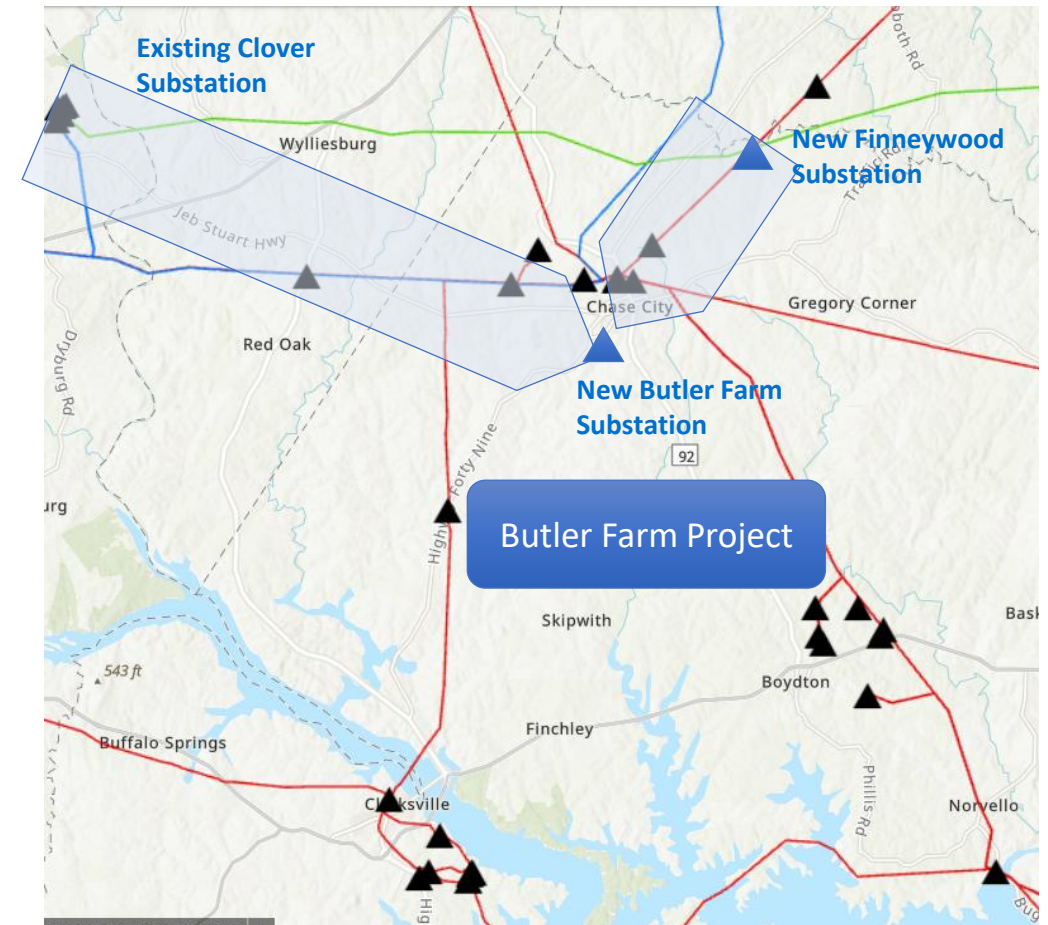


Butler Farm Project Scope

Charlotte, Halifax, and Mecklenburg counties

Project Goal Scope:

- **Clover-Butler Farm:** Build approximately 18 miles of new single-circuit 230 kV transmission line from the existing Clover Substation to the proposed Butler Farm Substation
 - Right of way needs: ~100' wide
- **Finneywood-Butler Farm:** Build approximately 7 miles of new single-circuit 230 kV transmission line right of way between the proposed Butler Farm Substation and the proposed Finneywood 500 kV/230 kV Substation
 - Right of way needs: ~120' wide
 - An additional 230 kV transmission line may be needed in this corridor in the future

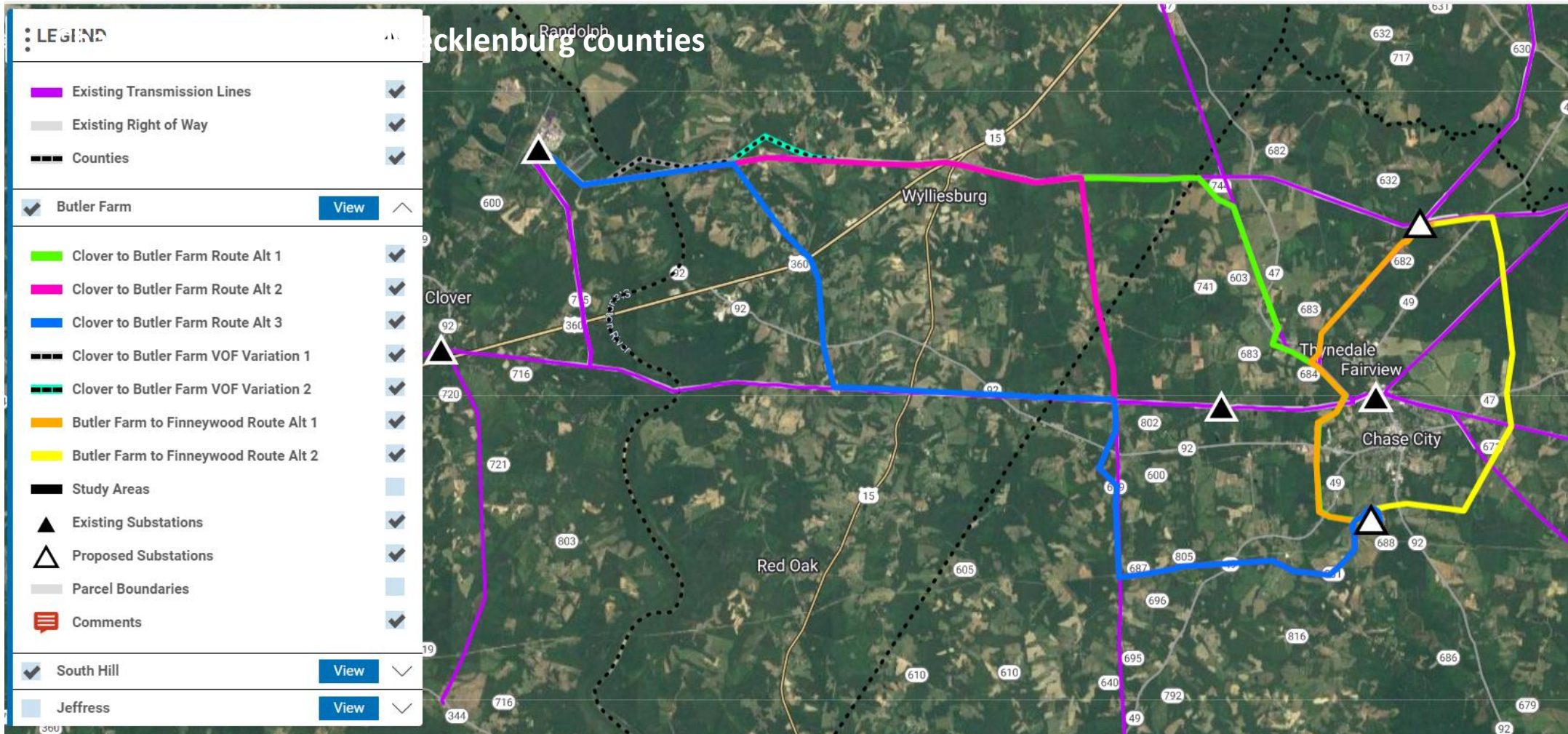


Route Options – Butler Farm

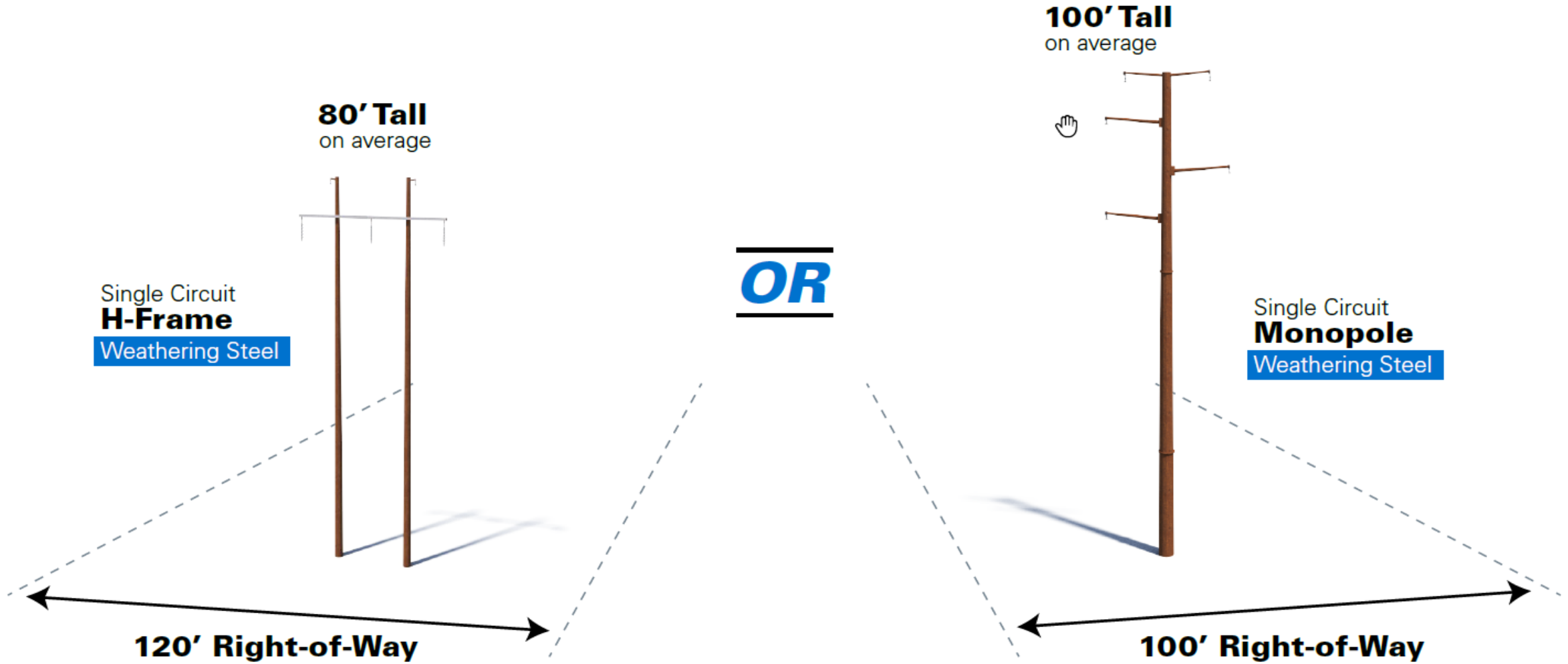


MECKLENBURG
GeoVoice Portal

Select Project

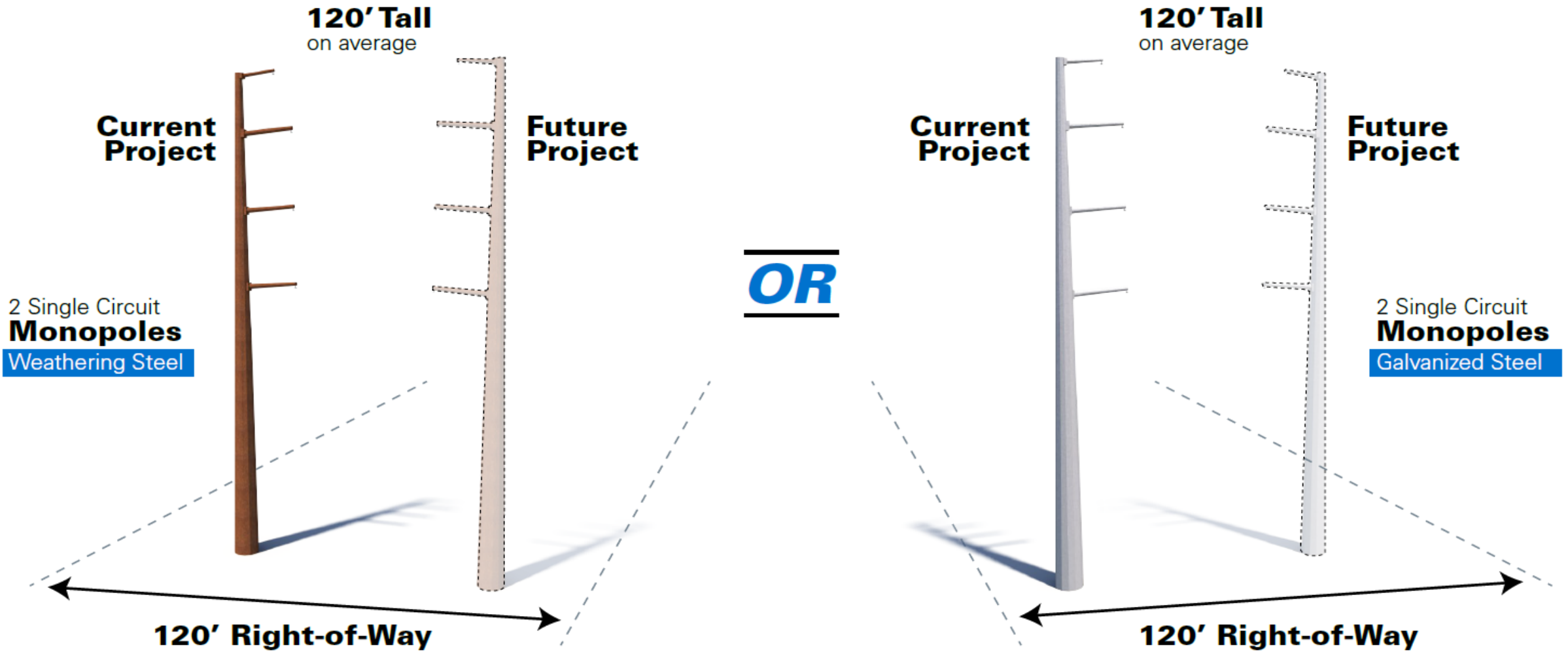


Clover - Butler Farm Typical Structures

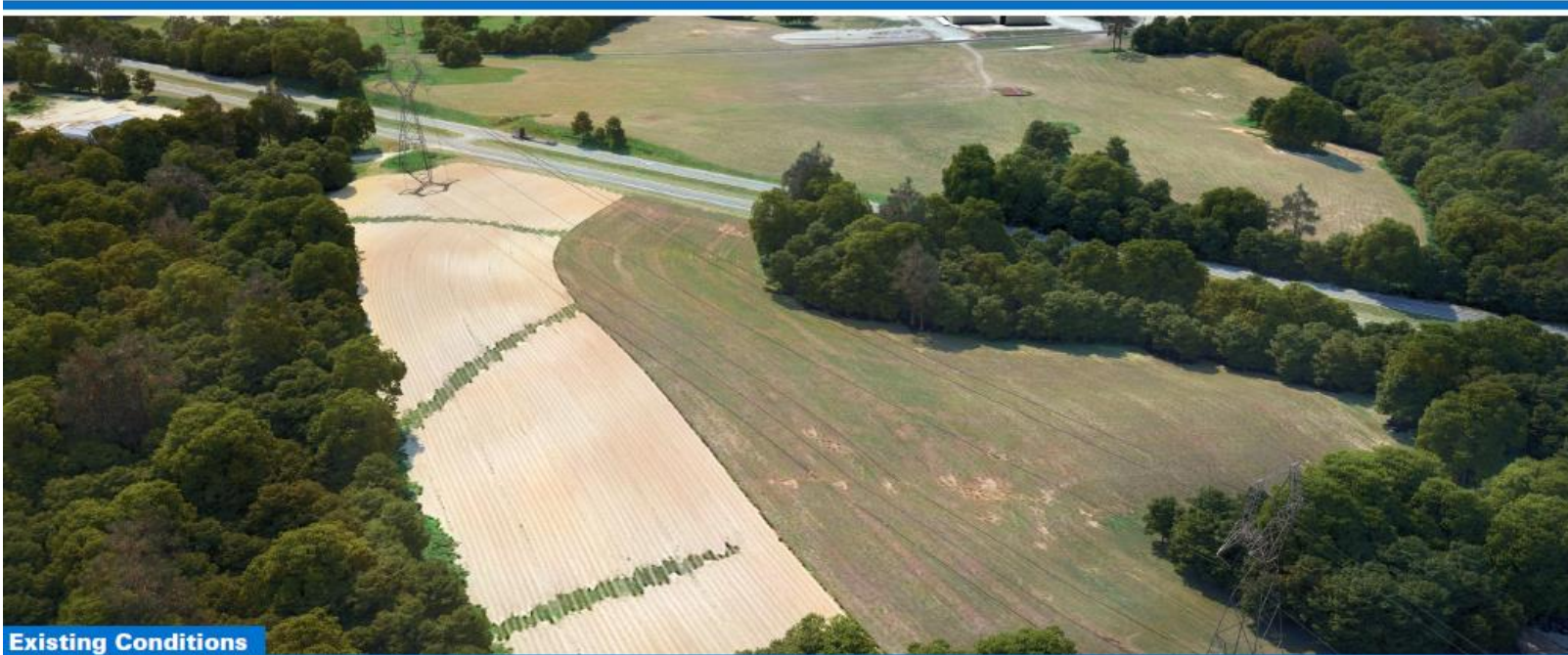


Visualization is for discussion purposes only. Final design is subject to change pending public, engineering, and regulatory review.

Finneywood - Butler Farm Typical Structures



Visualization is for discussion purposes only. Final design is subject to change pending public, engineering, and regulatory review.



Existing Conditions



Proposed Conditions

Butler Farm

Transmission Line Project

Aerial Rendering 1

Clover to Butler Farm

Typical Structure:

100' Single-Circuit Monopole

Right-of-Way Width:

100 Feet

Structure Material:

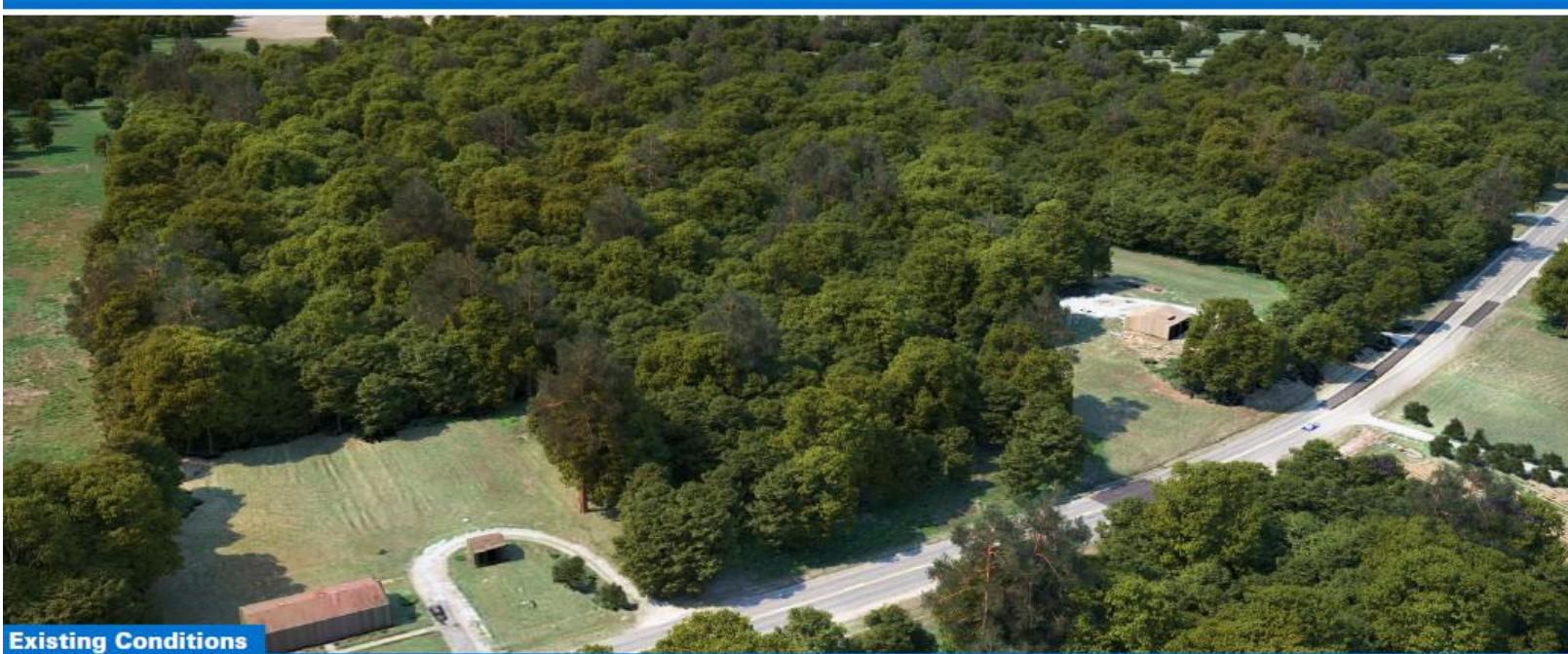
Weathering Steel

Viewing Direction:

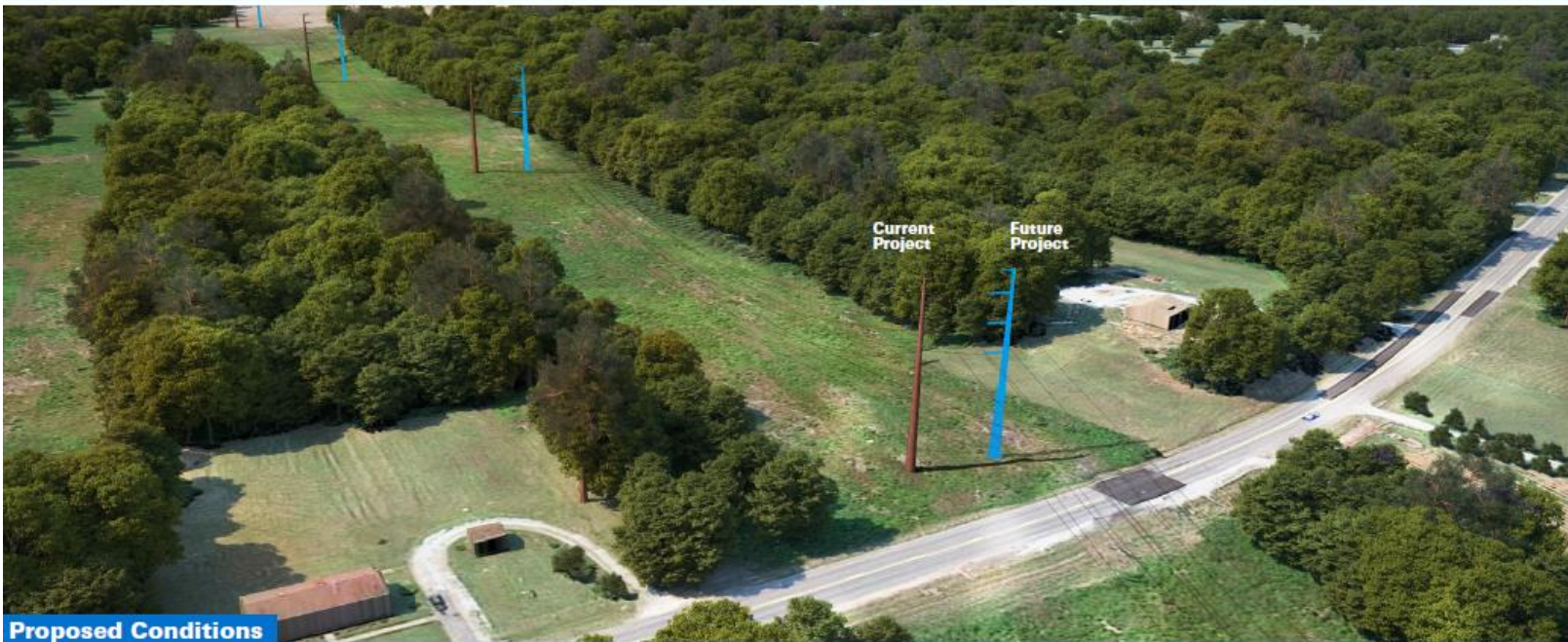
East

Visualization is for discussion purposes only.
Final design is subject to change pending public,
engineering, and regulatory review.





Existing Conditions



Proposed Conditions

Butler Farm

Transmission Line Project

Aerial Rendering 3

Finneywood to Butler Farm

Typical Structure:

120' - Single-Circuit Monopoles

Right-of-Way Width:

100 Feet

Structure Material:

Weathering Steel

Viewing Direction:

Southwest

Visualization is for discussion purposes only.
Final design is subject to change pending public,
engineering, and regulatory review.





EXISTING Conditions



PROPOSED Conditions

BUTLER FARM

Substation Project

SIMULATION 6

Date: 4/28/22
Time: 10:36am
Viewing Direction: Southwest



Photo simulations are for discussion purposes only.
Final design is subject to change pending public,
engineering, and regulatory review.





EXISTING Conditions



PROPOSED Conditions

BUTLER FARM

Substation Project

SIMULATION 9

Date: 4/29/22
Time: 10:07am
Viewing Direction: Southeast



Photo simulations are for discussion purposes only.
Final design is subject to change pending public,
engineering, and regulatory review.





EXISTING Conditions



PROPOSED Conditions

BUTLER FARM
Substation Project

SIMULATION 11

Date: 4/28/22
Time: 9:21am
Viewing Direction: West



Photo simulations are for discussion purposes only.
Final design is subject to change pending public,
engineering, and regulatory review.





EXISTING Conditions



PROPOSED Conditions

BUTLER FARM

Substation Project

SIMULATION 14

Date: 4/28/22
Time: 8:20am
Viewing Direction: Southwest



Photo simulations are for discussion purposes only.
Final design is subject to change pending public,
engineering, and regulatory review.





BUTLER FARM Substation Project

SIMULATION 16

Date: 4/28/22
Time: 1:32pm
Viewing Direction: East



Photo simulations are for discussion purposes only.
Final design is subject to change pending public,
engineering, and regulatory review.



Community Meetings



Two in-person Community Meetings held in May 2022. Public was able to review routing options and speak with subject matter experts

- May 3 – Mecklenburg County
~61 attendees
- May 11 – Charlotte County
~43 attendees

Common Themes:

- Solar, Broadband, Electromagnetic Field (EMF), Real Estate, Aesthetics, Disapproval of Data Centers, NIMBY

COMMUNITY MEETINGS

Tuesday, May 3, 2022
5 – 7 p.m.

Robert E. Lee Community Center
121 East Second Street
Chase City, VA 23924

(20-minute presentation begins at 5 p.m.)

Wednesday, May 11, 2022
5 – 7 p.m.

Red Oak Excavating
5192 Barnesville Highway
Red Oak, VA 23964

(20-minute presentation begins at 5 p.m.)



- One in-person Community Meeting held in June 2022. Public input was received and incorporated into project planning:
 - ✓ Photo simulations
 - ✓ Updated routes
 - ✓ June 21 – Mecklenburg County
~23 attendees
- Common Themes: Solar, Broadband, Electromagnetic Field (EMF), Real Estate, Aesthetics, Disapproval of Data Centers, NIMBY, Co-Op Distribution Reliability
- For questions throughout the project, email powerline@dominionenergy.com or call **888-291-0190**

COMMUNITY MEETING

Tuesday • June 21, 2022 • 5–7 p.m.

(drop by anytime during these hours)

Chase City YMCA

316 N. Main Street • Chase City, VA 23924

- For more information and to access GeoVoice, please visit:
[DominionEnergy.com/butlerfarm](https://www.dominionenergy.com/butlerfarm)
 - ✓ Structure renderings
 - ✓ Aerial renderings
 - ✓ Presentation recordings/Q&A sessions from May meetings

South Hill Project Scope

Brunswick, Lunenburg, and Mecklenburg counties

• Project Scope

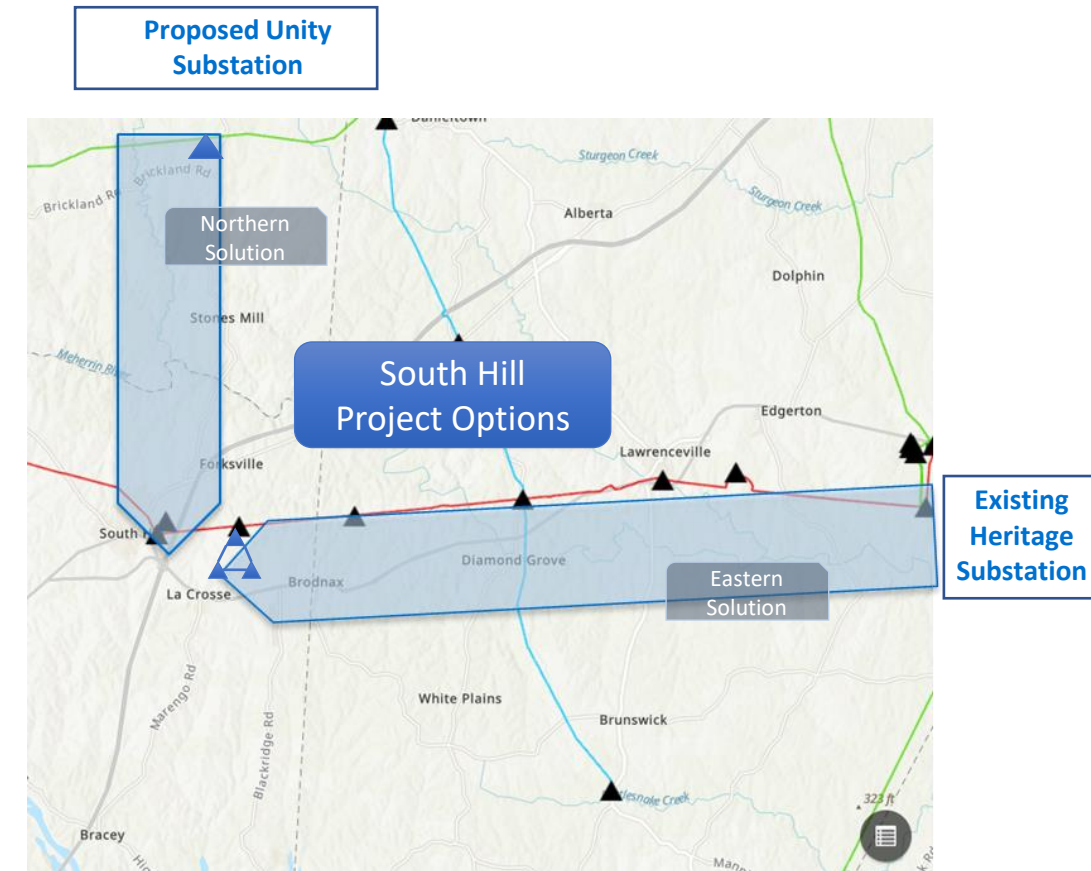
- Build two single-circuit 230 kV transmission lines parallel to one another on shared right of way into the South Hill/La Crosse areas
- Build three substations in South Hill/La Crosse
 - Build a connecting transmission line loop between the three proposed substations
 - Substations located on data center property



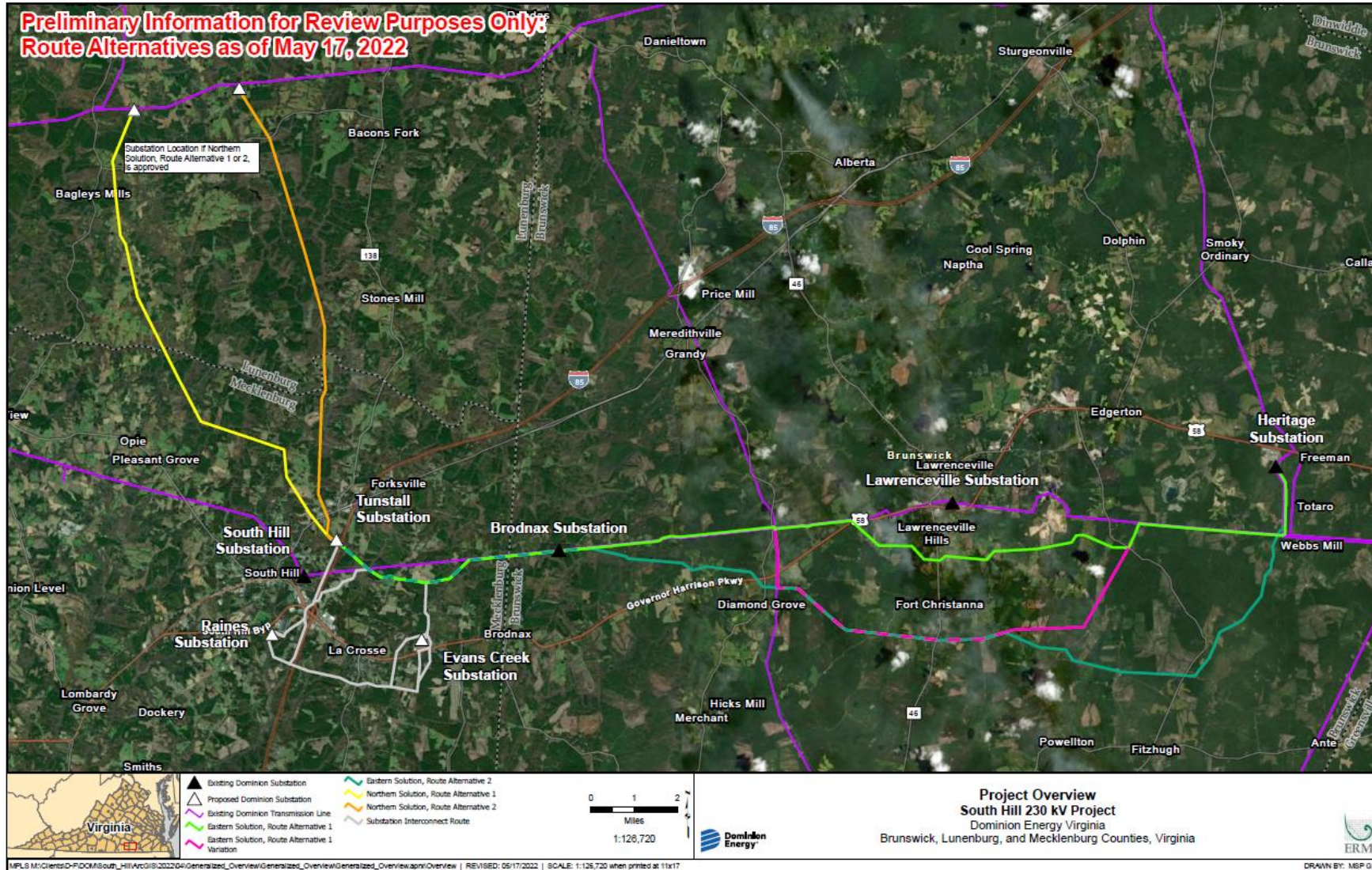
South Hill Project Scope

Brunswick, Lunenburg, and Mecklenburg counties

- **Electrical Options (only building one of these options at this time – multiple routes within each option)**
 - **Eastern Solution:** Expand the existing Heritage Substation (Brunswick County) and construct approximately 25 miles of new transmission line corridor partially co-located with our existing 115 kV right of way
 - **Northern Solution:** Build a new substation, Unity Substation, along our existing 500 kV line (Lunenburg County) and construct approximately 10 miles of new right of way
- **Right of way needs**
 - ~120 feet wide

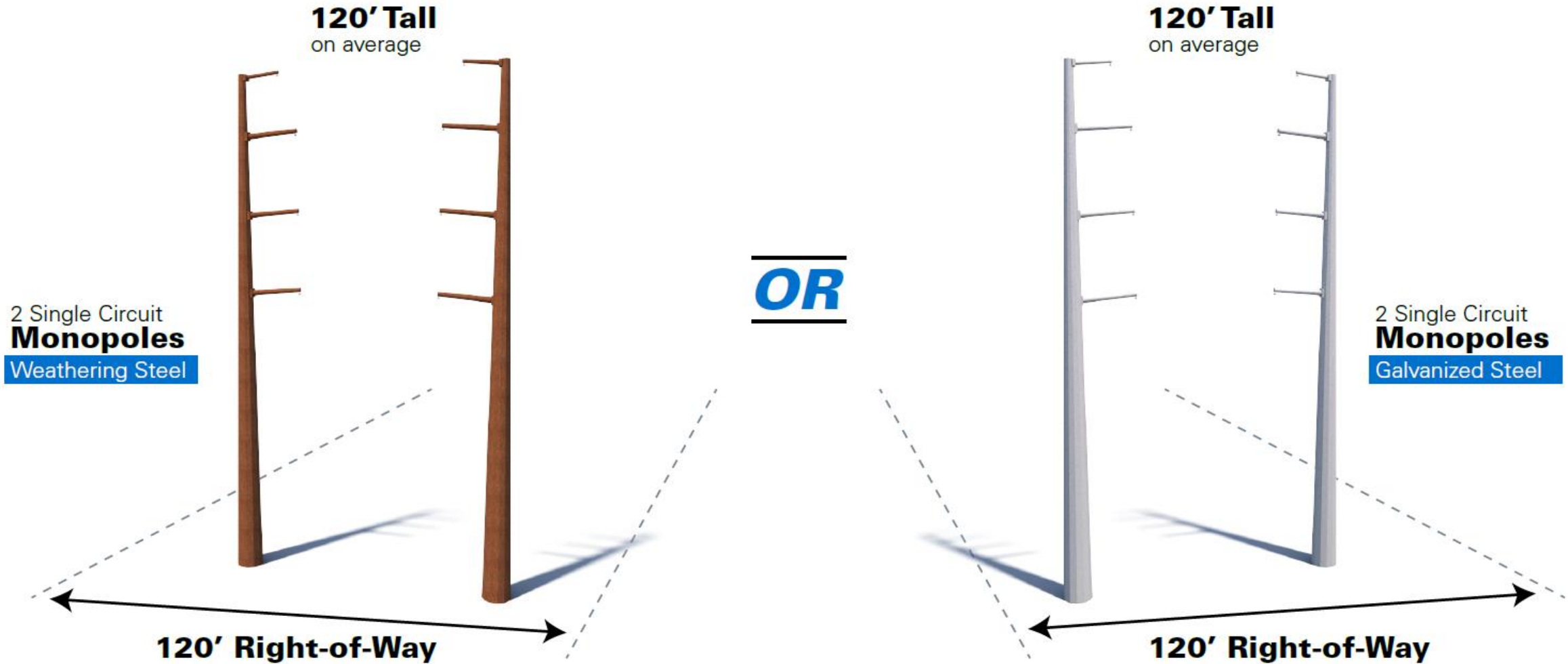


Route Options – South Hill



South Hill Typical Structures

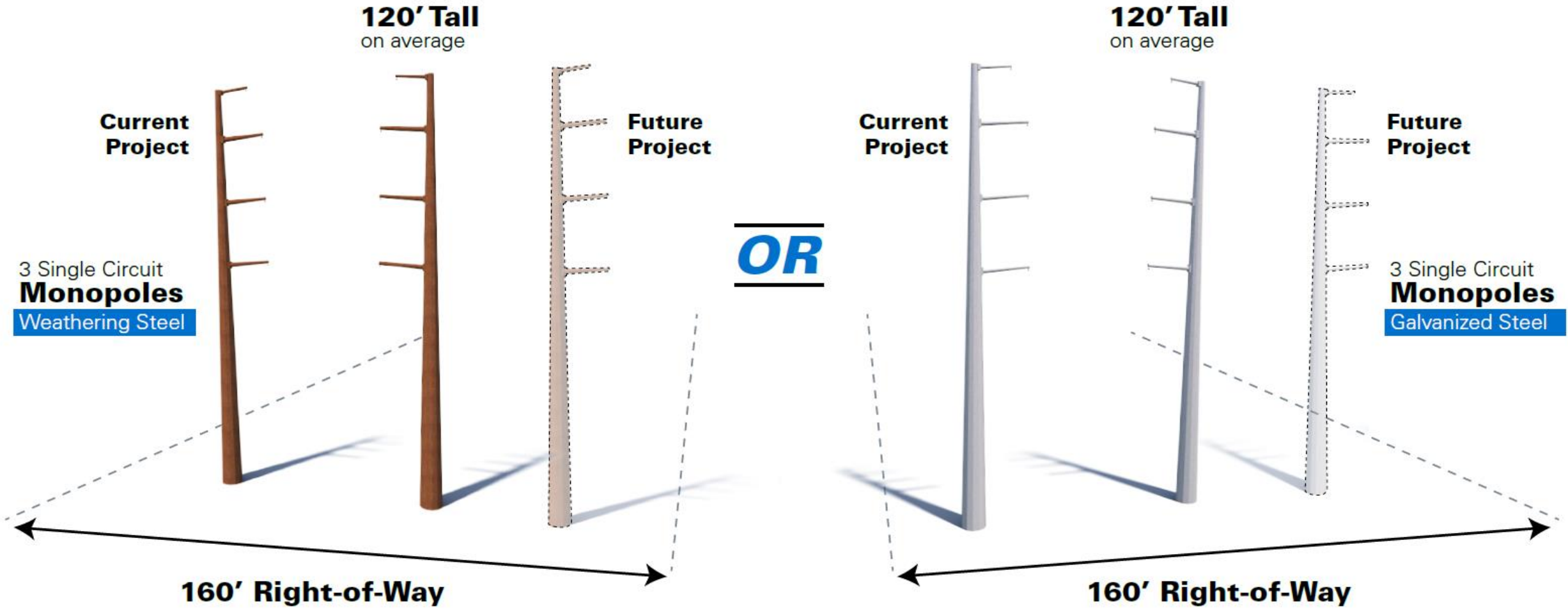
Eastern and Northern Solution



Visualization is for discussion purposes only. Final design is subject to change pending public, engineering, and regulatory review.

South Hill Typical Structures

Substation Interconnects - Eastern and Northern Solution



Visualization is for discussion purposes only. Final design is subject to change pending public, engineering, and regulatory review.

South Hill

Transmission Line Project

Aerial Rendering 1

Northern Solution

Typical Structure:

120' - 2 Single Circuit
Monopoles

Right-of-Way Width:

120 Feet

Structure Material:

Weathering Steel

Viewing Direction:

Southeast

Visualization is for discussion purposes only.
Final design is subject to change pending public,
engineering, and regulatory review.



Existing Conditions



Proposed Conditions



Existing Conditions



Proposed Conditions

South Hill

Transmission Line Project

Aerial Rendering 2

Eastern Solution

Typical Structure:

120' - 2 Single Circuit
Monopoles

Right-of-Way Width:

120 Feet

Structure Material:

Weathering Steel

Viewing Direction:

Northeast

Visualization is for discussion purposes only.
Final design is subject to change pending public,
engineering, and regulatory review.





Existing Conditions



Proposed Conditions

South Hill

Transmission Line Project

Ground Rendering

Eastern & Northern Solution

Typical Structure:

120' - 2 Single Circuit Monopoles

Right-of-Way Width:

120 Feet

Structure Material:

Weathering Steel

Viewing Direction:

West

Visualization is for discussion purposes only.
Final design is subject to change pending public,
engineering, and regulatory review.





Existing Conditions



Proposed Conditions

South Hill

Transmission Line Project

Aerial Rendering 3

Substation Interconnects Solution

Typical Structure:

120' - 3 Single Circuit
Monopoles

Right-of-Way Width:

160 Feet

Structure Material:

Weathering Steel

Viewing Direction:

East

Visualization is for discussion purposes only.
Final design is subject to change pending public,
engineering, and regulatory review.



Community Meetings



Three in-person Community Meetings held in June 2022. Public was able to review routing options and speak with subject matter experts

- June 1 – Brunswick County
~26 attendees
- June 6 – Mecklenburg County
~79 attendees
- June 7 – Lunenburg County
~30 attendees

Common Themes:

- Solar, Broadband, Electromagnetic Field (EMF), Real Estate, Aesthetics, Work-Related Noise, Disapproval of Data Centers, NIMBY

COMMUNITY MEETINGS

Wednesday, June 1, 2022 • 5–7 p.m.
Brunswick County Conference Center
100 Athletic Field Road — Lawrenceville, VA 23868
(20-minute presentation begins at 5 p.m.)

Monday, June 6, 2022 • 5–7 p.m.
The Colonial Center for Performing Arts
220 South Mecklenburg Avenue — South Hill, VA 23970
(20-minute presentation begins at 5 p.m.)

Tuesday, June 7, 2022 • 5–7 p.m.
Breezy Knoll Farm
4986 Craig Mill Road — South Hill, VA 23970
(20-minute presentation begins at 5 p.m.)



Upcoming Community Meeting



- Another in-person Community Meeting in July 2022 once public input is received and incorporated into project planning:
 - ✓ Photo simulations
 - ✓ Updated routes
- For questions throughout the project, email powerline@dominionenergy.com or call **888-291-0190**
- For more information and to access GeoVoice, please visit: DominionEnergy.com/southhill
 - ✓ Structure renderings
 - ✓ Aerial renderings
 - ✓ Presentation recordings/Q&A sessions from June meetings

COMMUNITY MEETING

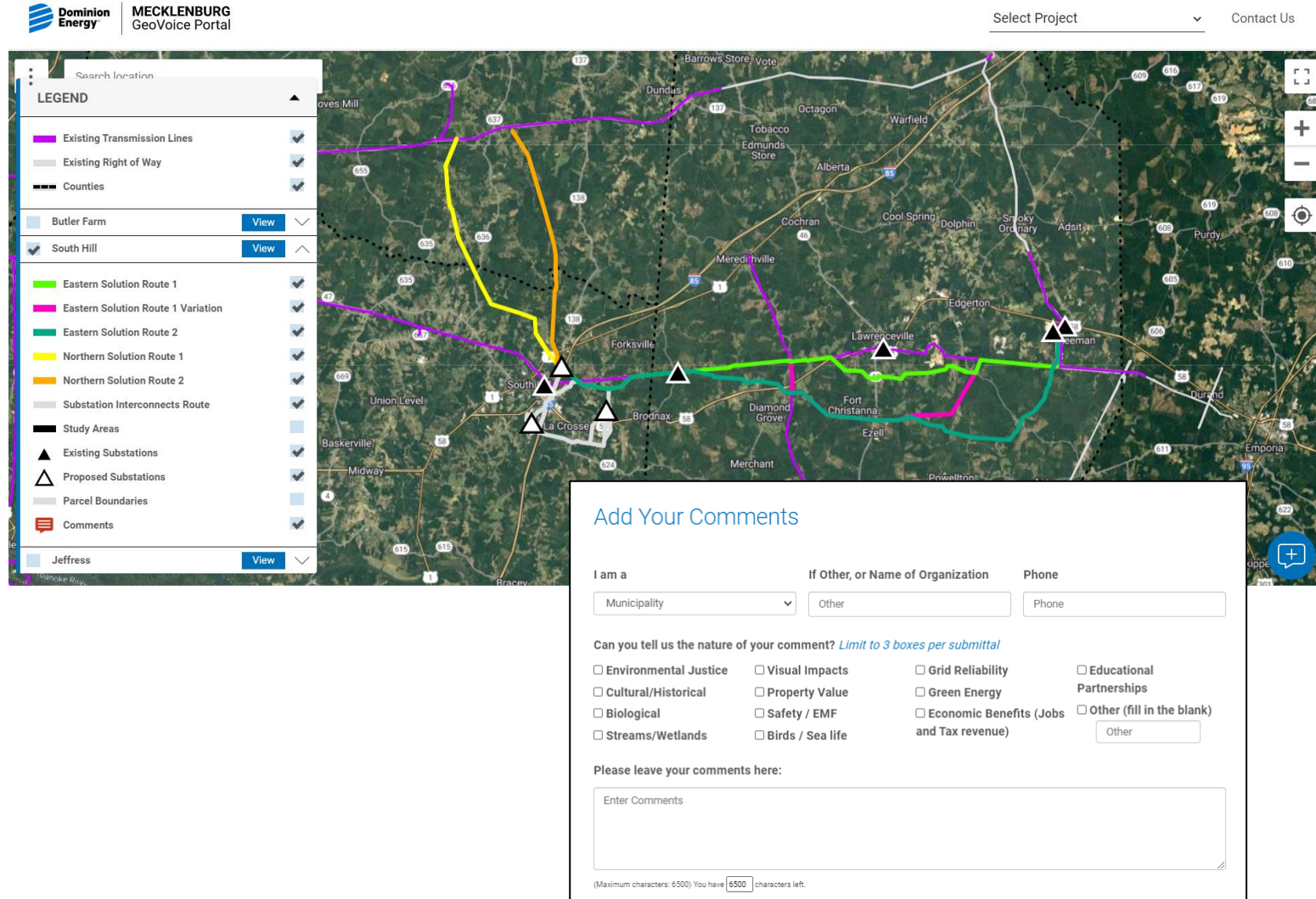
Wednesday • July 20, 2022 • 5 p.m. – 7 p.m.

(drop by anytime during these hours)

The Dogwood Event Venue
313 Franklin Street A • South Hill, VA 23970

[DominionEnergy.com/butlerfarm](https://www.dominionenergy.com/butlerfarm)
[DominionEnergy.com/southhill](https://www.dominionenergy.com/southhill)

- Review the study areas
- Interactive mapping tool
- Evolves as routing options become available and are refined
- Add comments, provide input or share insight on the location of important personal concerns or natural and historical resources
- Track project development and receive updates



MECKLENBURG GeoVoice Portal

Select Project ▼ Contact Us

Search Location

LEGEND

- Existing Transmission Lines
- Existing Right of Way
- Counties
- Butler Farm View ▼
- South Hill View ▲
- Jeffress View ▼
- Eastern Solution Route 1
- Eastern Solution Route 1 Variation
- Eastern Solution Route 2
- Northern Solution Route 1
- Northern Solution Route 2
- Substation Interconnects Route
- Study Areas
- Existing Substations
- Proposed Substations
- Parcel Boundaries
- Comments

Add Your Comments

I am a If Other, or Name of Organization Phone

Can you tell us the nature of your comment? *Limit to 3 boxes per submittal*

| | | | |
|--|---|---|--|
| <input type="checkbox"/> Environmental Justice | <input type="checkbox"/> Visual Impacts | <input type="checkbox"/> Grid Reliability | <input type="checkbox"/> Educational Partnerships |
| <input type="checkbox"/> Cultural/Historical | <input type="checkbox"/> Property Value | <input type="checkbox"/> Green Energy | <input type="checkbox"/> Other (fill in the blank) |
| <input type="checkbox"/> Biological | <input type="checkbox"/> Safety / EMF | <input type="checkbox"/> Economic Benefits (Jobs and Tax revenue) | <input type="text" value="Other"/> |
| <input type="checkbox"/> Streams/Wetlands | <input type="checkbox"/> Birds / Sea life | | |

Please leave your comments here:

(Maximum characters: 6500) You have 6500 characters left.

- **Virginia State Corporation Commission (SCC):** Certificate of Public Convenience and Necessity
 - Alternatives Analysis
 - Routing Study
 - Department of Environmental Quality Supplement and coordinated review
- **U.S. Army Corps of Engineers**
- **Other Agency Review**
 - Department of Environmental Quality (DEQ)
 - Virginia Marine Resources Commission (VMRC)
 - Virginia Department of Transportation (VDOT)
- **Local Permitting Requirements**
 - Substations on Data Center property/part of developer's site plans
 - New Finneywood 500 kV/230 kV substation

Transmission Line Planning and Public Engagement Process

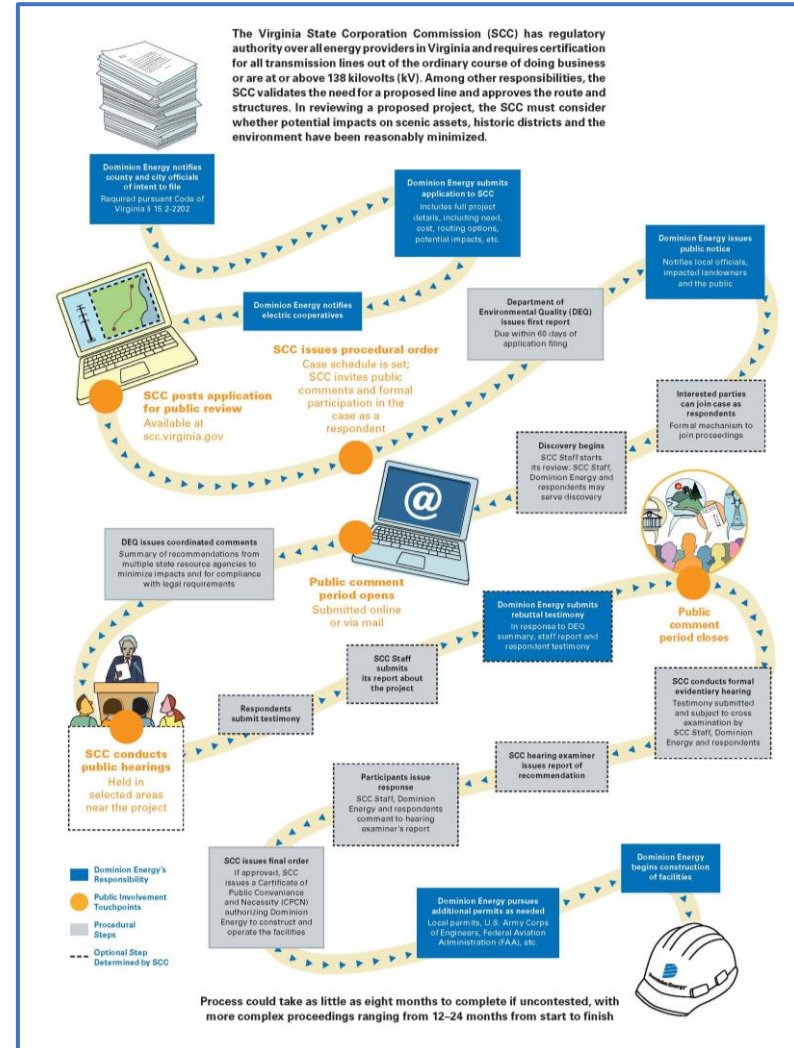
SCC Application

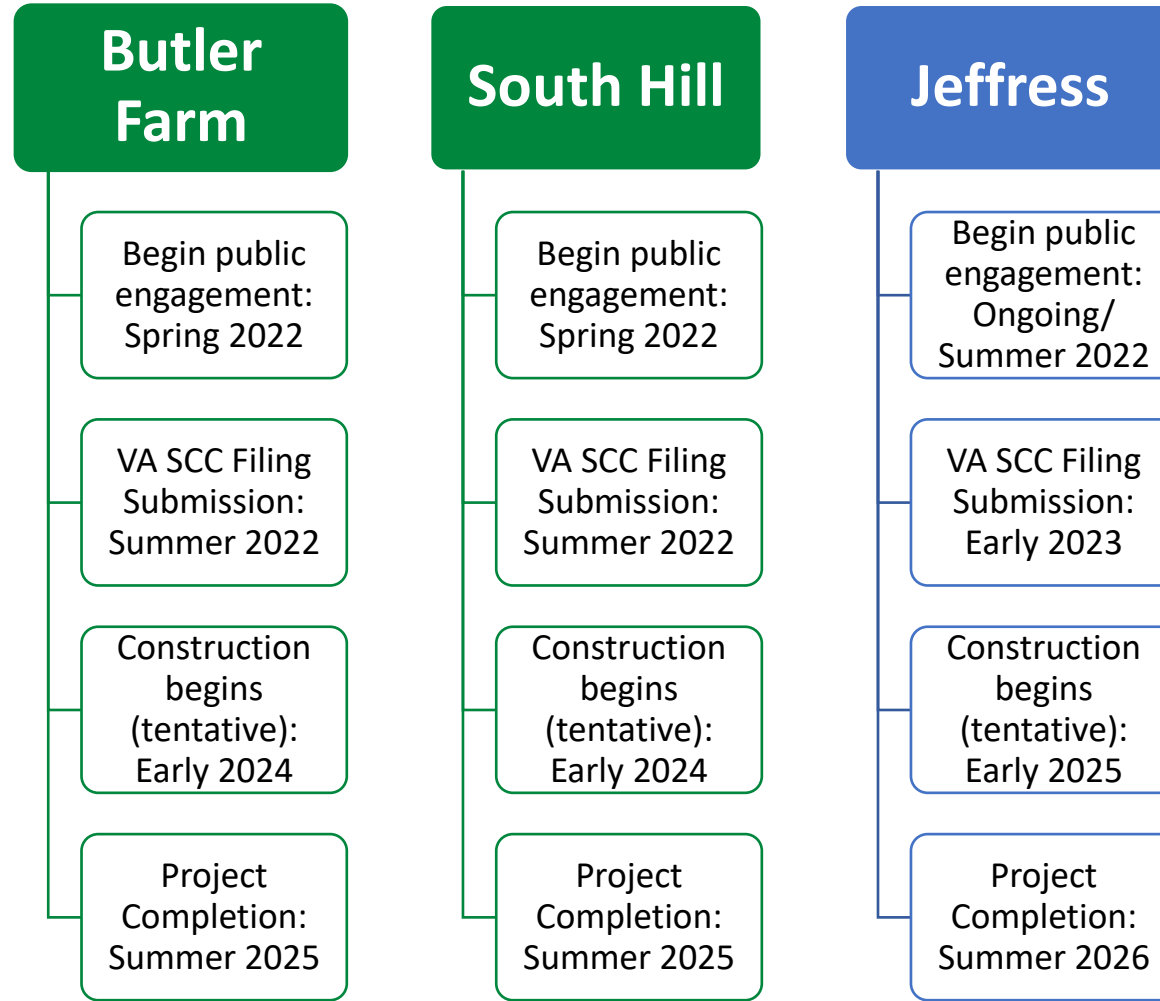


Opportunities for public involvement throughout the process, including public hearings



Process could take as little as eight months to complete if uncontested, with more complex proceedings ranging from 12–24 months from start to finish





Thank You



Our company is built on a proud legacy of public service, innovation and community involvement.

