

# **Carmel Church and Ruther Glen Community Meeting #2**

**Caroline High School**

**Tuesday, Sept. 17, 2024**

The presentation will begin at 5:15 p.m.

# Welcome



- Welcome / Introductions
- Project Overview Presentation
- Open House Style until 7 p.m.

*\* The presentation will be recorded and placed on our website after the meeting.*

# Our Commitment

- Explain project information clearly
- Listen and respect questions, concerns from our community members, learn
- Act in the interest of our customers and neighbors



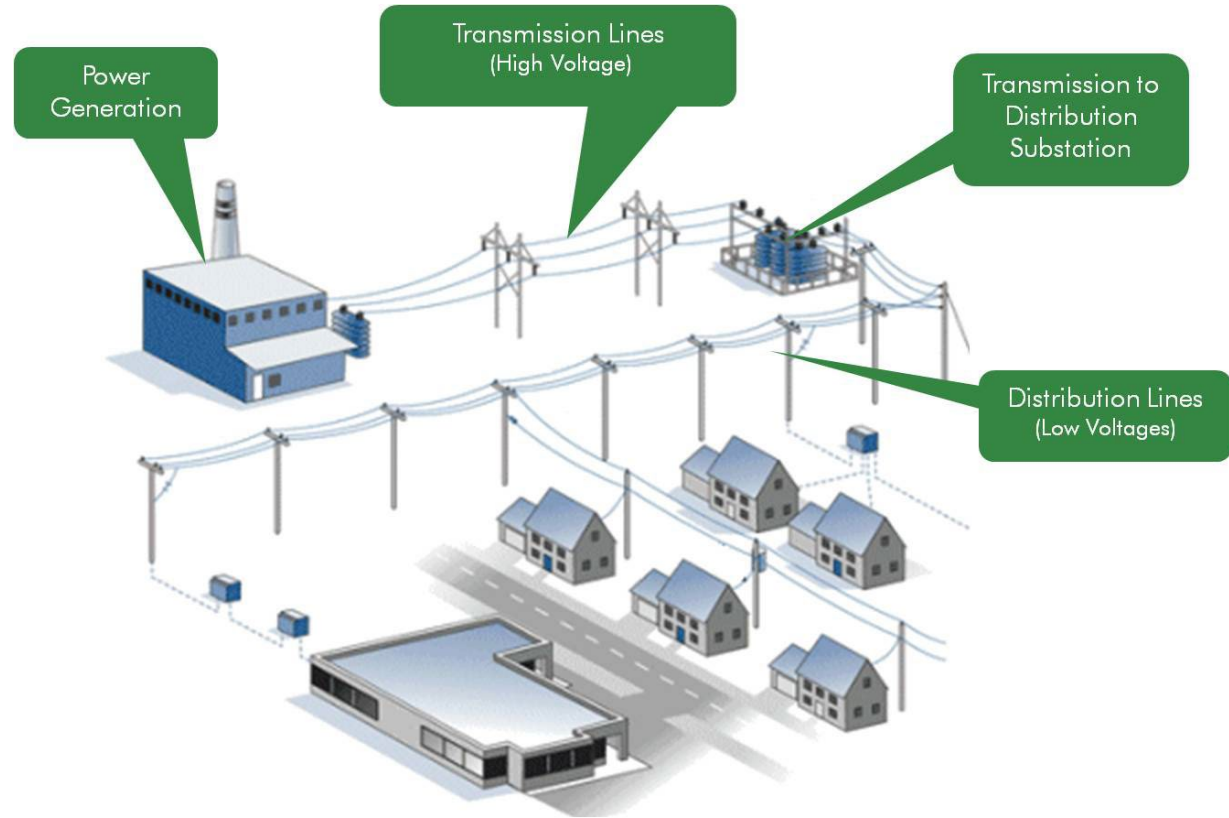
**Thank you for being here.**

# Electric Transmission 101

Electric transmission and electric distribution lines both carry electricity, but they look different and serve different functions.

Electric transmission lines are high voltage lines that carry electricity from our power stations to substations.

Once the transmission line reaches a substation, the voltage is lowered and delivered to your home or business via electric distribution lines.



# Our Obligation to Serve

Dominion Energy has an obligation to serve our customers and maintain a safe, reliable electric grid.

Key factors to ensure grid reliability:

- Comply with industry standards
- Ensure maintenance of our assets
- Plan for events and create contingencies



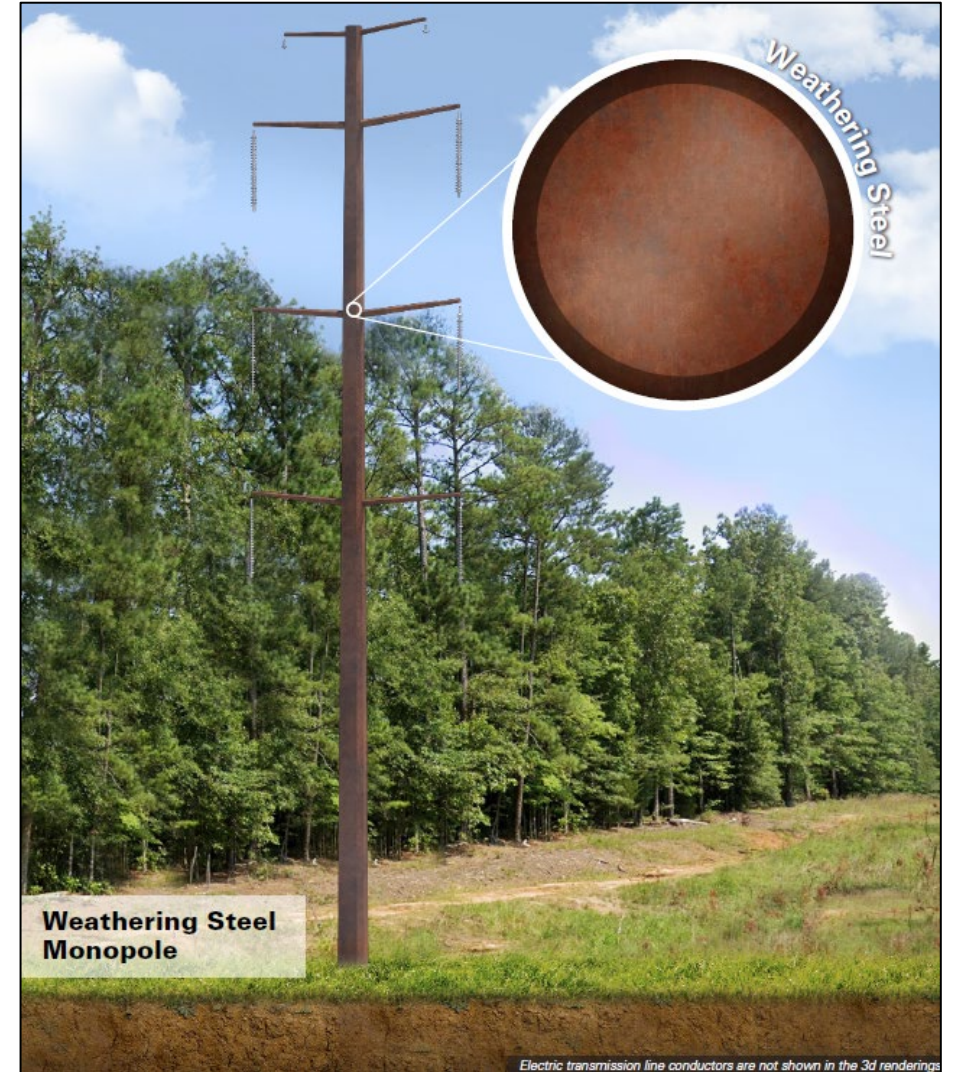
# Project Need

- Rappahannock Electric Cooperative (REC) is the electric distribution provider in the area where both projects are located.
- REC submitted a load request to Dominion Energy for the Carmel Church project and the Ruther Glen project. The REC load requests were prompted by service requests from new customers.
- Dominion Energy planning teams reviewed the REC load requests. Due to amount of power requested, DEV-ET's planning team identified that one Double-Circuit 230 kV line is needed to serve each site. A transmission switching station is also needed at each customer site to provide power to REC's substation.

# Structure Type

- 230 kV monopole structures
- Typically, 110-130 ft. tall
- Compact design, one foundation

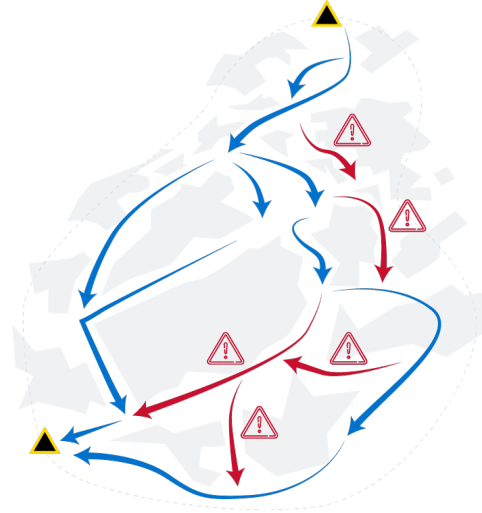
*Structure design is preliminary. Each structure type and height are subject to change based on final engineering.*



# Routing Process

## Key Considerations and Constraints:

- Wetlands
- Historic/Cultural areas
- Residential Areas
- Planned Developments
- Conservation Easements
- Government-owned lands





# Project Updates

- First community meeting – Tuesday, July 23, 2024
  - 88 attendees
- Several route changes have been made.
- Team is still soliciting feedback

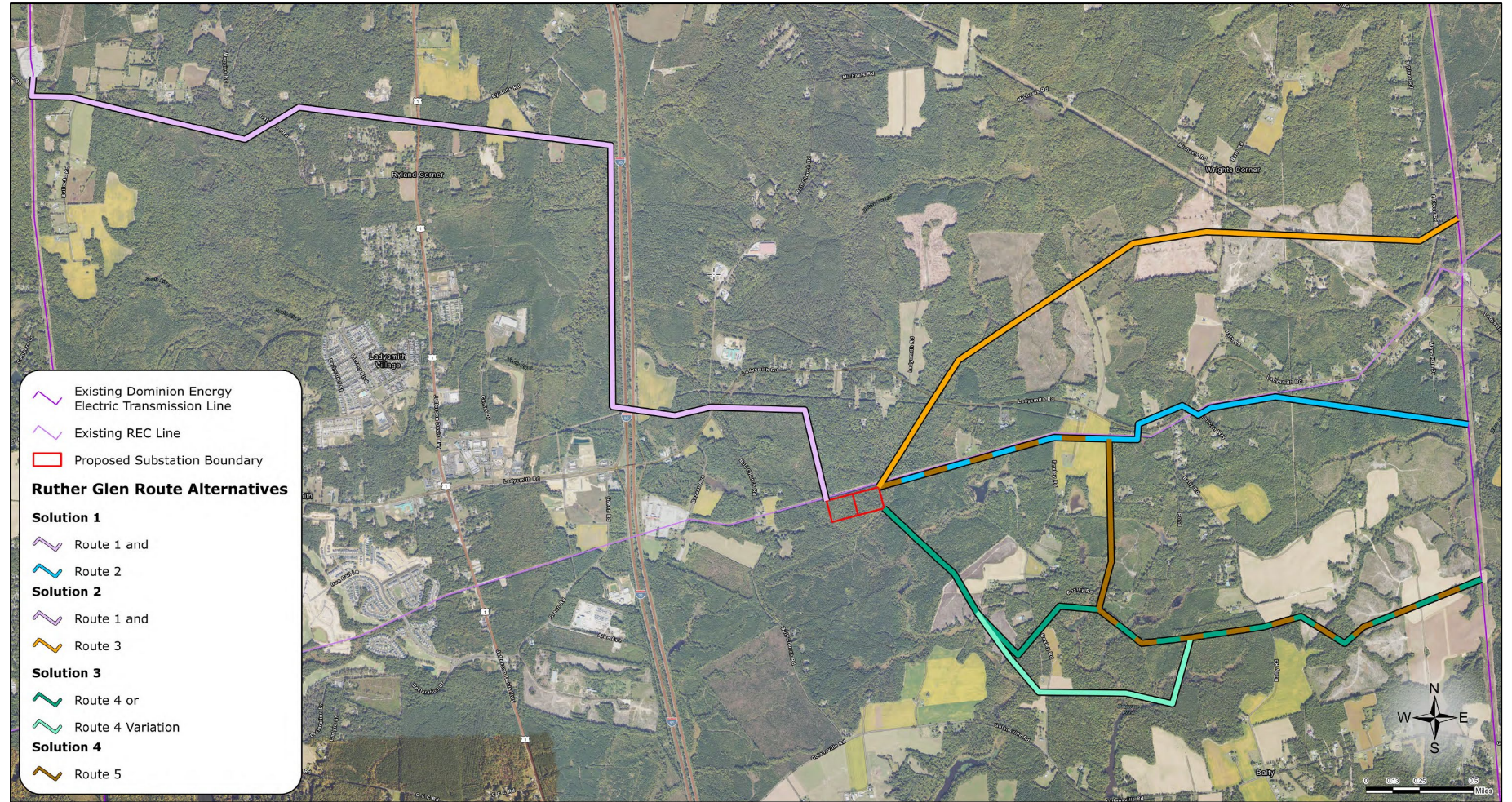
# Carmel Church

- Green Route



# Ruther Glen

- Teal Route



# Project Timeline

June 2024	<ul style="list-style-type: none"><li>• Project announcement</li></ul>
July 23, 2024	<ul style="list-style-type: none"><li>• Community Meeting #1</li></ul>
Sept. 17, 2024	<ul style="list-style-type: none"><li>• Community Meeting #2</li></ul>
Fall 2024	<ul style="list-style-type: none"><li>• File application with the Virginia State Corporation Commission (SCC)</li></ul>
Summer 2025	<ul style="list-style-type: none"><li>• SCC ruling (anticipated)</li></ul>
Summer 2026	<ul style="list-style-type: none"><li>• Permitting</li><li>• Finalize engineering</li><li>• Pre-construction outreach</li><li>• Construction begins</li></ul>
Early 2027	<ul style="list-style-type: none"><li>• Construction complete</li><li>• Work area restoration begins</li></ul>

# Next Steps

## Determine a proposed solution for each project and file application

We determine a proposed solution (with alternatives listed) after review with stakeholders and with considerations for:

- Cost
- Impacts
- Constructability
- Time to construct

The Commission will review the case, and ultimately decide which route the company will construct.

The SCC review process includes opportunities for public involvement. The review period typically lasts about one year (may vary).



# Following the SCC Case

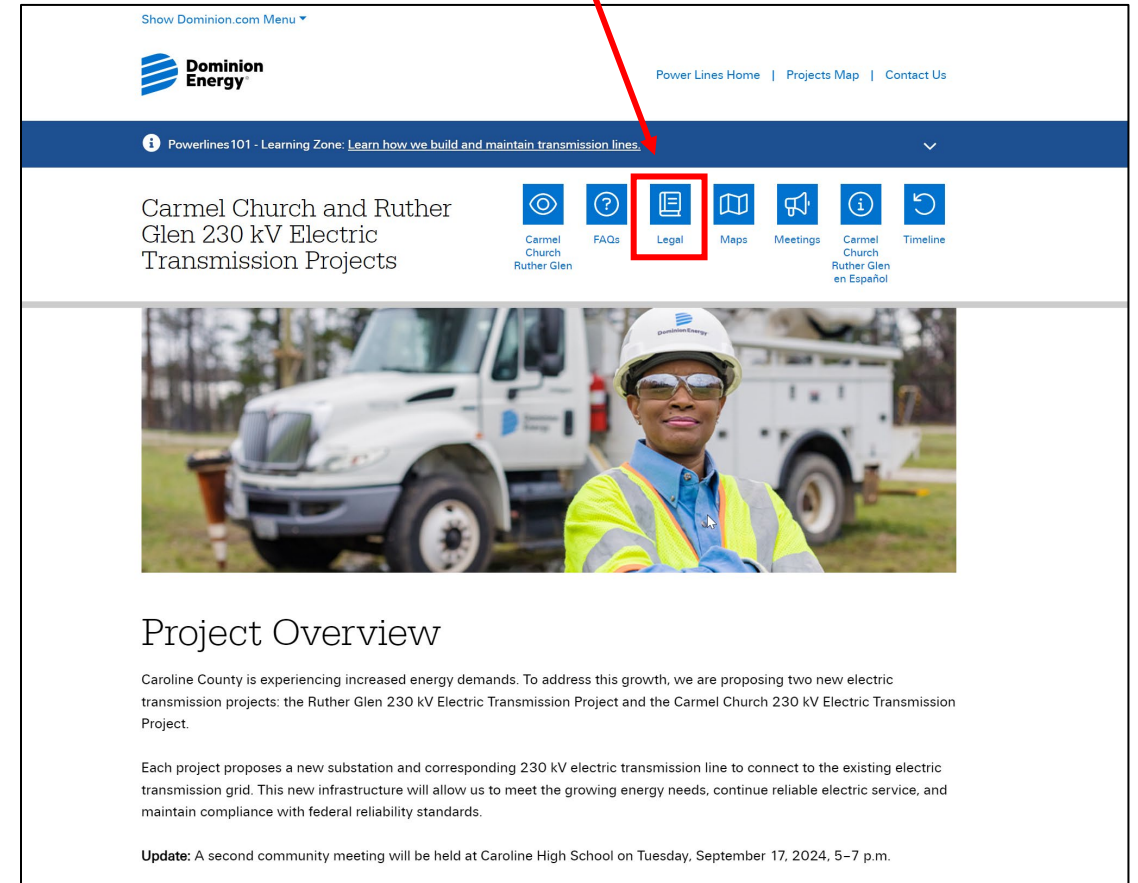
Key documents associated with the project can be viewed on our project website. Visit [DominionEnergy.com/carmelchurchrutherglen](https://www.dominionenergy.com/carmelchurchrutherglen) and select the “Legal” tab at the top of the page.

Here, you can find the information needed to access all case documents, including the case number, application, and a link to the SCC’s Case Docket Search page.

Dominion Energy will host some case documents on our project website, such as the filing, the hearing examiner report, and the final order. To view every filed document with the case, visit the SCC Case Docket Search.

**Case number:** will be available after filing

View the application by selecting the “Legal” tab at the top of our project website



The screenshot shows the website interface for the Carmel Church and Ruther Glen 230 kV Electric Transmission Projects. At the top, there is a navigation bar with the Dominion Energy logo and links for "Power Lines Home", "Projects Map", and "Contact Us". Below this is a blue banner with the text "Powerlines101 - Learning Zone: Learn how we build and maintain transmission lines." and a dropdown arrow. The main navigation area features several icons: "Carmel Church Ruther Glen", "FAQs", "Legal" (highlighted with a red box and a red arrow), "Maps", "Meetings", "Carmel Church Ruther Glen en Español", and "Timeline". Below the navigation is a large image of a Dominion Energy worker in a hard hat and safety vest standing in front of a white utility truck. The page content includes a "Project Overview" section with text about increased energy demands in Caroline County and the proposed transmission projects. An "Update" section at the bottom states: "A second community meeting will be held at Caroline High School on Tuesday, September 17, 2024, 5–7 p.m."

# Thank you

## Open House Style Session until 7 p.m.

- Gymnasium divided by project
- REC representatives in attendance

Your feedback is encouraged! Share your comments with us as soon as possible.

The routes are not finalized yet.