



July 1, 2024

## **Proposed Carmel Church 230 kV Electric Transmission Project**

Dear Neighbor,

At Dominion Energy, we are dedicated to providing the reliable, affordable, and increasingly clean energy that powers our customers every day. You are receiving this letter because we are planning for new electric transmission infrastructure in your area.

Caroline County is experiencing growing energy demands as new business is developing in the area. To address this growth, we are working with Rappahannock Electric Cooperative (REC) to plan for new electric infrastructure to meet the new power needs, maintain federal reliability rules, and keep the grid operating efficiently. As such, we are proposing two electric transmission projects:

- **Ruther Glen 230 kV Electric Transmission Project**
- **Carmel Church 230 kV Electric Transmission Project**

Each project proposes a new substation and an associated double-circuit 230 kilovolt (kV) electric transmission line. The new electric transmission infrastructure will serve REC, which provides electric distribution service to a large portion of Caroline County.

Enclosed, you will find an overview map with the substation locations and study areas, along with a fact sheet. While multiple routes will be evaluated, each project will list one proposed route with alternatives to be submitted to the Virginia State Corporation Commission (SCC) for final evaluation and approval.

Public engagement is a key part of the project planning process. Our team welcomes your feedback and incorporates community perspective prior to filing an application with the SCC. To take part in the conversation, we invite you to join us at an upcoming community meeting at Caroline Family YMCA on Tuesday, July 23, 2024, from 5-7 p.m.

More information will be provided in the coming weeks. In the meantime, we encourage you to visit our project website, [DominionEnergy.com/carmelchurchrutherglen](https://DominionEnergy.com/carmelchurchrutherglen). You can also contact our project team by email at [powerline@dominionenergy.com](mailto:powerline@dominionenergy.com) or by phone at 888-291-0190.

Thank you for your understanding while we plan for long-term reliability investments in your community.

Sincerely,

The Electric Transmission Project Team

Enclosures: Project Study Area Map, Project Fact Sheet

# Carmel Church and Ruther Glen 230 kV Electric Transmission Projects

CAROLINE COUNTY, VIRGINIA



## OVERVIEW

At Dominion Energy, we are committed to providing the reliable, affordable, and increasingly clean energy that powers our customers every day. Caroline County and surrounding areas are experiencing growing energy demands. To address this development, we are proposing two new electric transmission projects.

- Ruther Glen 230 kV Electric Transmission Project
- Carmel Church 230 kV Electric Transmission Project

Each project proposes a new substation and corresponding 230 kV electric transmission line to connect to the existing electric transmission grid.

## QUICK FACTS

- Location:
  - The proposed Ruther Glen Substation is located in the Mattaponi District of Caroline County, less than one mile east of I-95 and a half mile south of Ladysmith Road.
  - The proposed Carmel Church Substation is located in the Reedy Church District of Caroline County, approximately 6 miles south of Ruther Glen, between I-95, Route 1, and Rogers Clark Boulevard.
- Study Area: The area currently under consideration for new corridors to connect the future substation to an existing transmission line. While most of the study area is located in Caroline County, the study area for the Carmel Church extends into Hanover County.
- The new electric transmission infrastructure will serve REC, which provides electric distribution service to a large portion of Caroline County.
- For each of the two projects, Dominion Energy will review multiple route options, and list one proposed route to the Virginia State Corporation Commission (SCC), with alternatives listed. Only one route will be selected to construct for each project.
- The routes shown in the early stages of the project are subject to change. Stay up to date by visiting our interactive mapping tool on our project website.



- Example of proposed structures:
- 230 kV double-circuit monopoles
  - Weathering steel finish
  - Average height: 110–130 ft

## PROJECT SCHEDULE

DATE	ACTIVITY
Summer 2024	Project announcement
Summer 2024	Community Meetings
Fall 2024	File application with the Virginia State Corporation Commission (SCC)
Summer 2025	Anticipated SCC ruling
2025 – Summer 2026	<ul style="list-style-type: none"><li>• Permitting</li><li>• Finalize engineering</li><li>• Pre-construction outreach</li></ul>
Summer 2026	Construction to begin
Early 2027	Construction complete, restoration begins

## PROJECT OVERSIGHT AND APPROVAL

Dominion Energy has an obligation to serve and maintain reliability for all customers. Entities such as PJM – which operates the electric grid in 13 states – and NERC, North American Electric Reliability Corporation, oversee standards to ensure reliability and the prudence of investments by utility companies like Dominion Energy.

The SCC is the regulatory body with jurisdiction over electric transmission lines in Virginia. Both projects will be reviewed by the SCC in one application, which we intend to file in fall 2024. Our SCC application and associated documents are made public upon filing and will be available for viewing. Visit the legal section of our project website for more details.

Although the SCC is the primary state agency reviewing and ultimately approving the project, there may be additional permits needed from various agencies, such as the Army Corps of Engineers.

## DETERMINING THE ROUTES

Dominion Energy is currently in the initial stages of the siting and routing process. New line routes will need to connect the new substations to nearby existing 230 kV electric transmission lines.

The planning and evaluation of electric transmission routes and any potential alternatives are one of the most challenging things we do at Dominion Energy. We recognize the impact a new transmission line has on the community. Multiple factors are considered when deciding where to build a new line including, but not limited to, land use, historic and cultural resources, environmental impacts, wetlands, environmental justice, and tribal property. We consider these factors to avoid or limit community impact and take community feedback into our plans wherever possible.

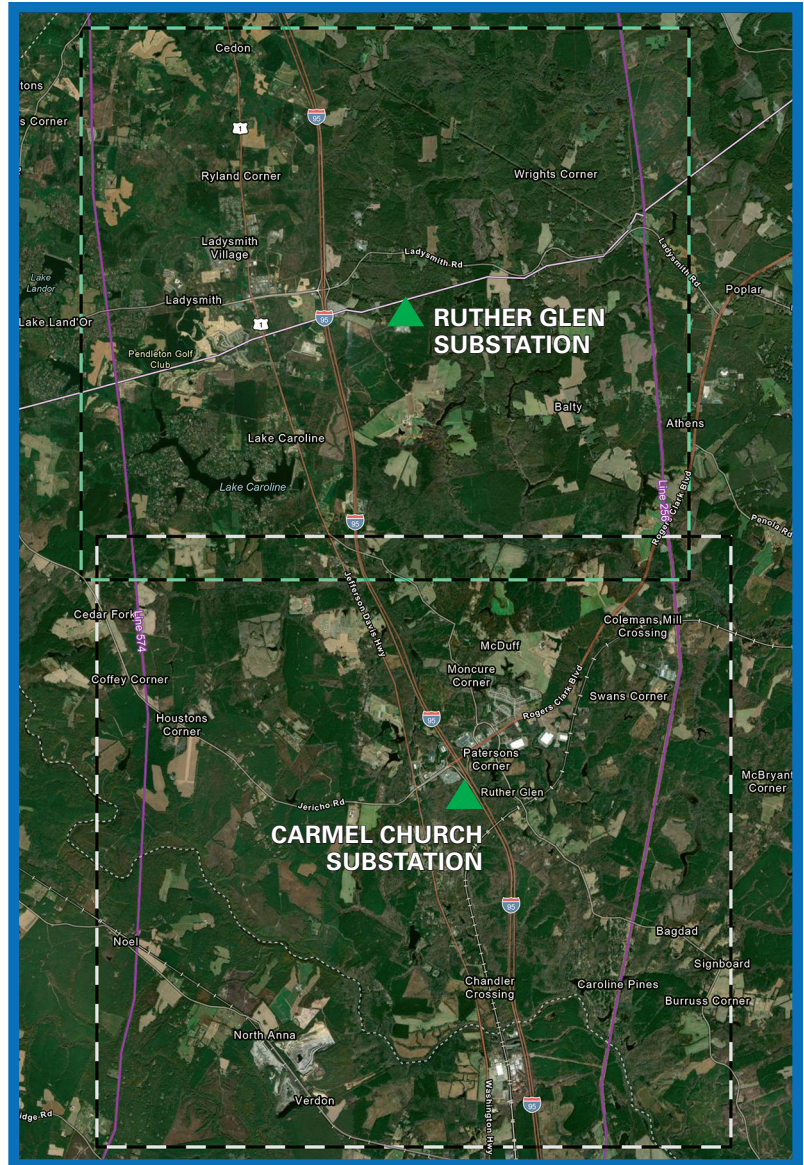
Ultimately, the SCC must approve the project need and route(s) prior to construction

## YOUR FEEDBACK MATTERS

We want to hear your input on our proposed routes, as the routes have not been finalized. The purpose of our public engagement is to share, listen and learn in order to make appropriate project changes. The SCC also considers public input in its review process. There are multiple ways to share your feedback with our team:

- Contact us by email at [powerline@dominionenergy.com](mailto:powerline@dominionenergy.com) or by phone at 888-291-0190.
- Leave your comments in our interactive mapping tool, which will be available on our project website in summer 2024.
- Attend our community meetings.
- Invite us to your community or property.

## STUDY AREA

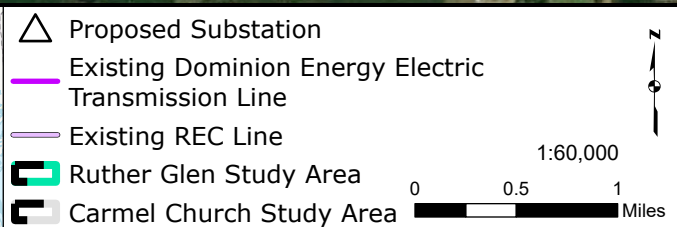
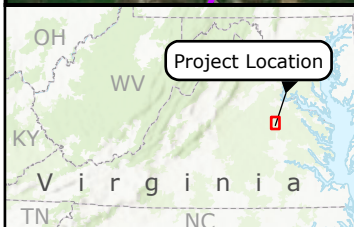
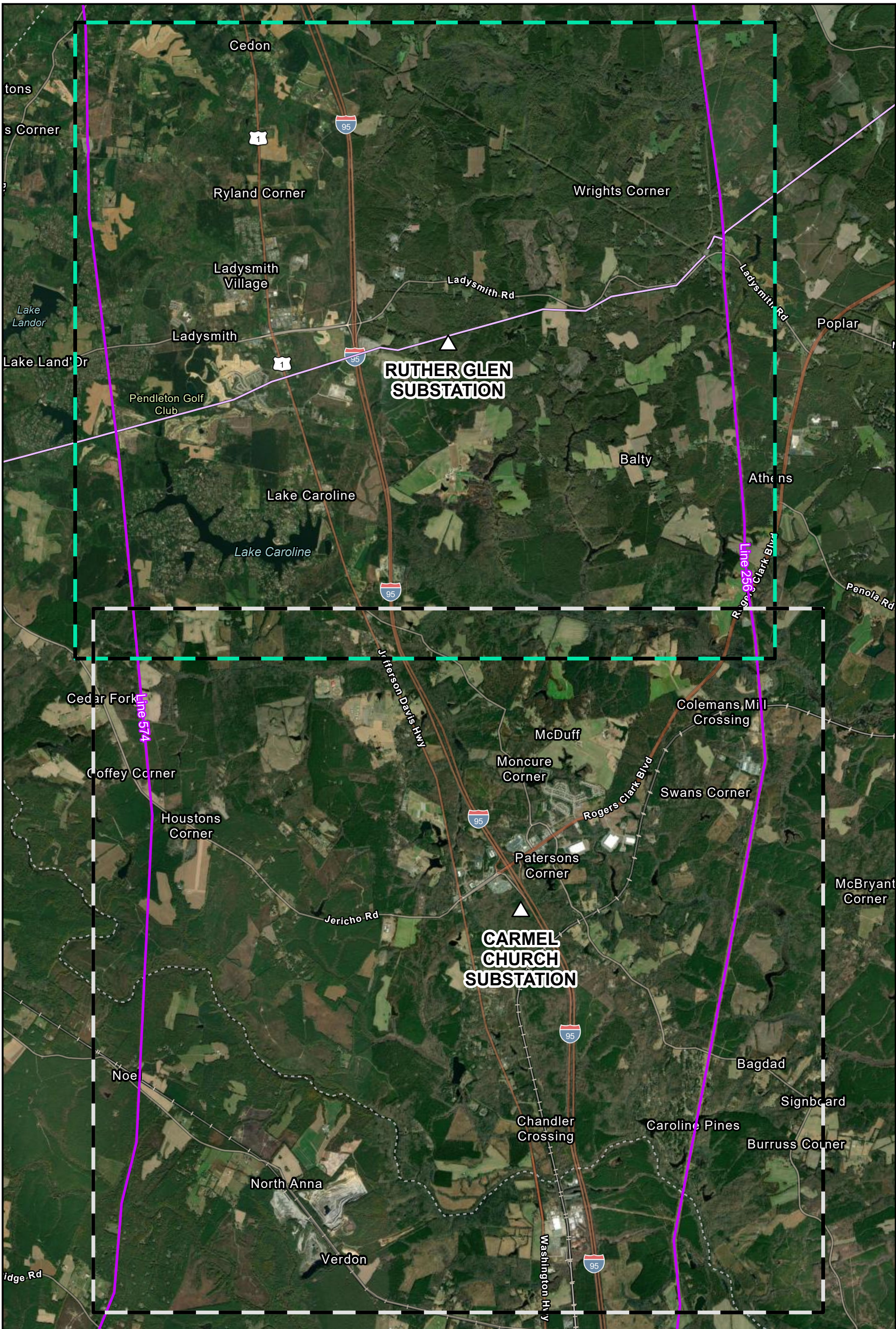


### FOR MORE INFORMATION

Visit our website at



[DominionEnergy.com/carmelchurchrutherglen](https://www.dominionenergy.com/carmelchurchrutherglen).

You may also contact us by sending an email to [powerline@dominionenergy.com](mailto:powerline@dominionenergy.com) or calling 888-291-0190.



**Project Overview**  
**Carmel Church and Ruther Glen**  
**230 kV Electric Transmission Projects**

Dominion Energy Virginia  
 Caroline County, Virginia

DRAWN BY: NAD