



July 18, 2024

Proposed Carmel Church and Ruther Glen 230 kV Electric Transmission Projects

Dear Neighbor,

At Dominion Energy, we are dedicated to keeping our communities up to date on projects in their area. Last month, we announced two new projects in Caroline County:

- **Ruther Glen 230 kV Electric Transmission Project**
- **Carmel Church 230 kV Electric Transmission Project**

Each project proposes a new substation and an associated double-circuit 230 kilovolt (kV) electric transmission line. The new electric transmission infrastructure will serve Rappahannock Electric Cooperative (REC), which provides electric distribution service to a large portion of Caroline County.

We are currently in the planning stages for the projects; our team is reviewing all electrical and construction options. Routes have not been finalized. However, we have enclosed a map with the current routes under consideration. To view the routes in detail, visit our website, DominionEnergy.com/carmelchurchrutherglen. Our interactive mapping tool, MapChat by ERM, has been launched on the website so you can zoom in on potential routes, measure distances, leave comments for our team, and more.

While multiple routes will be evaluated, each project will list one proposed solution with alternatives to be submitted to the Virginia State Corporation Commission (SCC) for final evaluation and approval.

You are invited to learn more about the routing process and project details at our upcoming community meeting:

Tuesday, July 23, 2024
5-7 p.m.
Caroline Family YMCA
17422 Library Boulevard
Ruther Glen, VA 22546

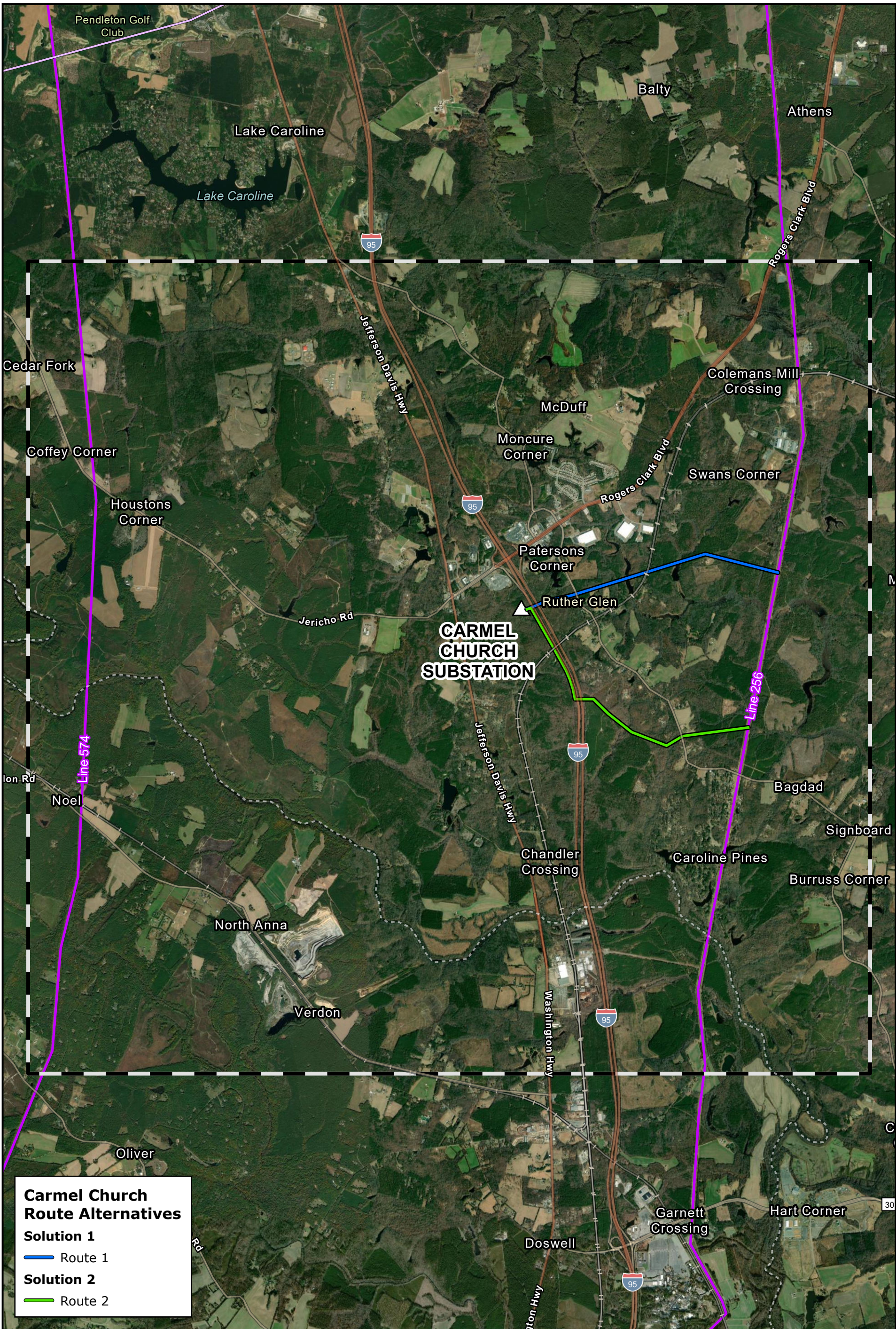
For questions about the project, contact our project team by email at powerline@dominionenergy.com or by phone at 888-291-0190.

Thank you for your understanding while we plan for long-term reliability investments in your community.

Sincerely,

The Electric Transmission Project Team

Enclosures: Initial Routes Map



Carmel Church Route Alternatives

Solution 1

Route 1

Solution 2

Route 2



- △ Proposed Substation
- Existing Dominion Energy Electric Transmission Line
- Existing REC Line
- Carmel Church Study Area

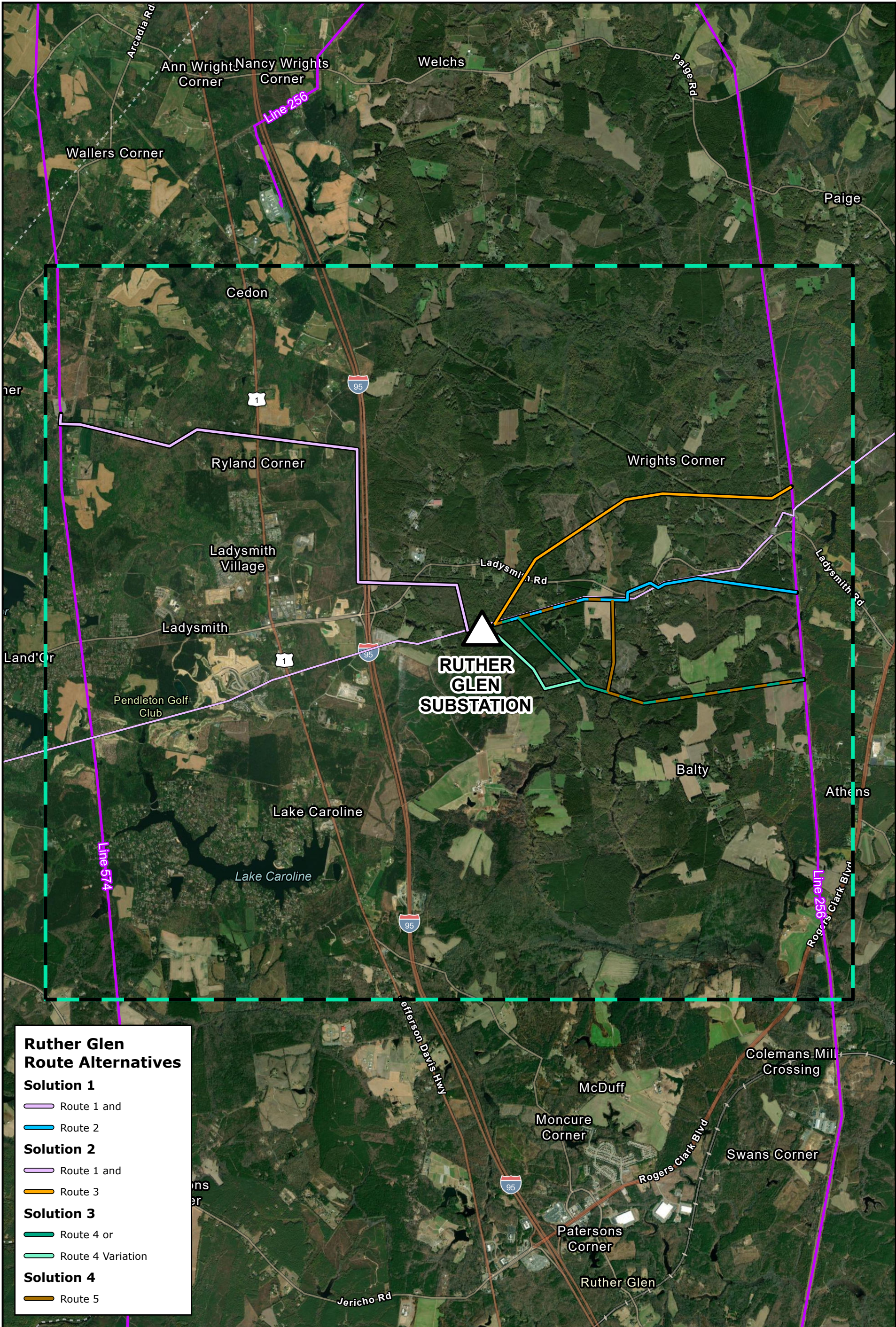
1:52,000

0 0.5 1 Miles

Project Overview

Carmel Church 230 kV Electric Transmission Projects

Dominion Energy
Caroline County, Virginia



Ruther Glen Route Alternatives

Solution 1

- Route 1 and
- Route 2

Solution 2

- Route 1 and
- Route 3

Solution 3

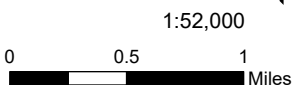
- Route 4 or
- Route 4 Variation

Solution 4

- Route 5



- Proposed Substation
- Existing Dominion Energy Electric Transmission Line
- Existing REC Line
- Ruther Glen Study Area



Project Overview
Ruther Glen 230 kV Electric Transmission Projects
 Dominion Energy
 Caroline County, Virginia

