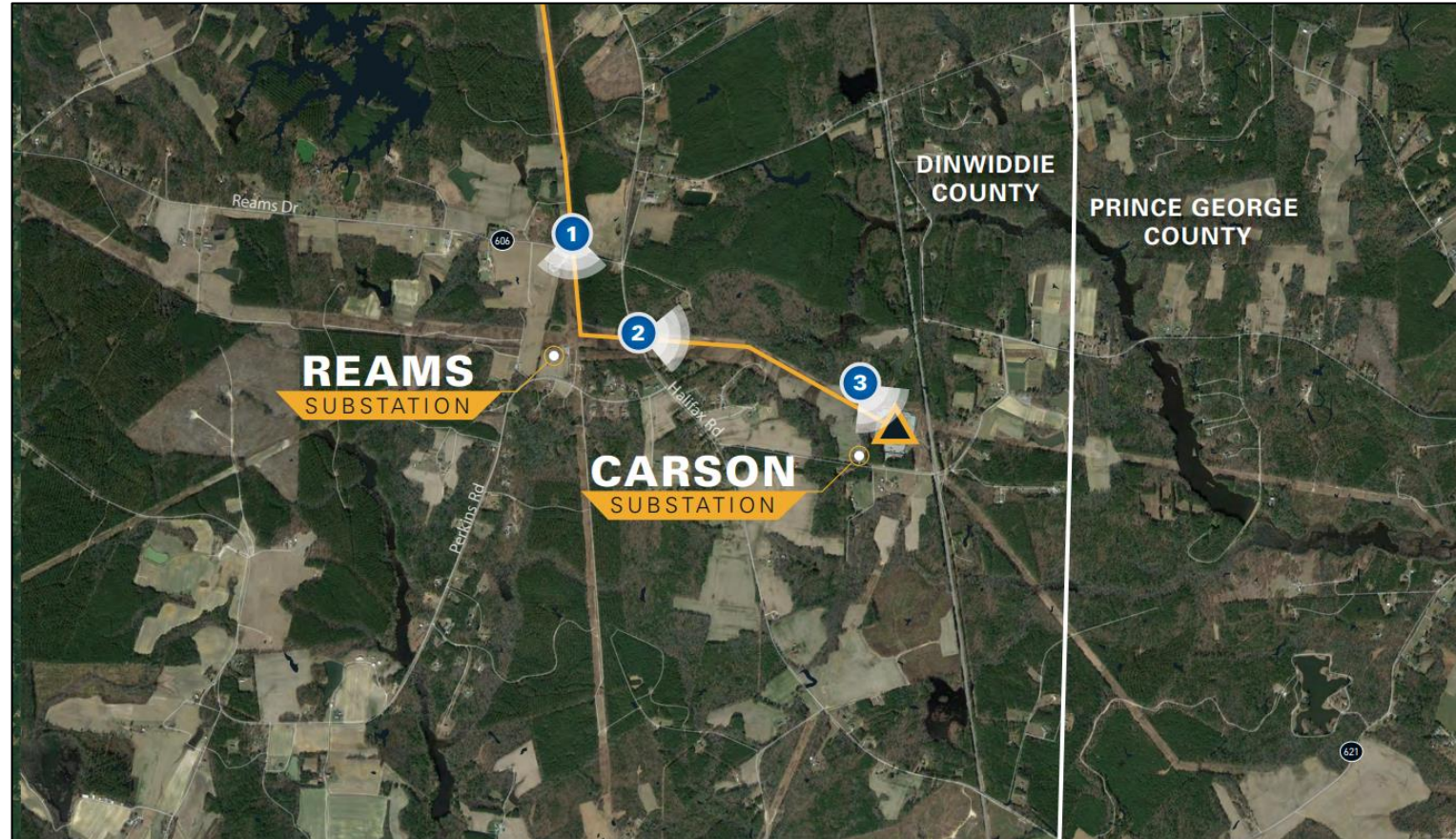


Lines 2002 and 238/249 230 kV Partial Rebuild Project

Carson-Reams 230 kV Partial Rebuild Project Virtual Community Meeting



Agenda

- About Webex Events
- Team Introductions
- Project Overview
- Q&A



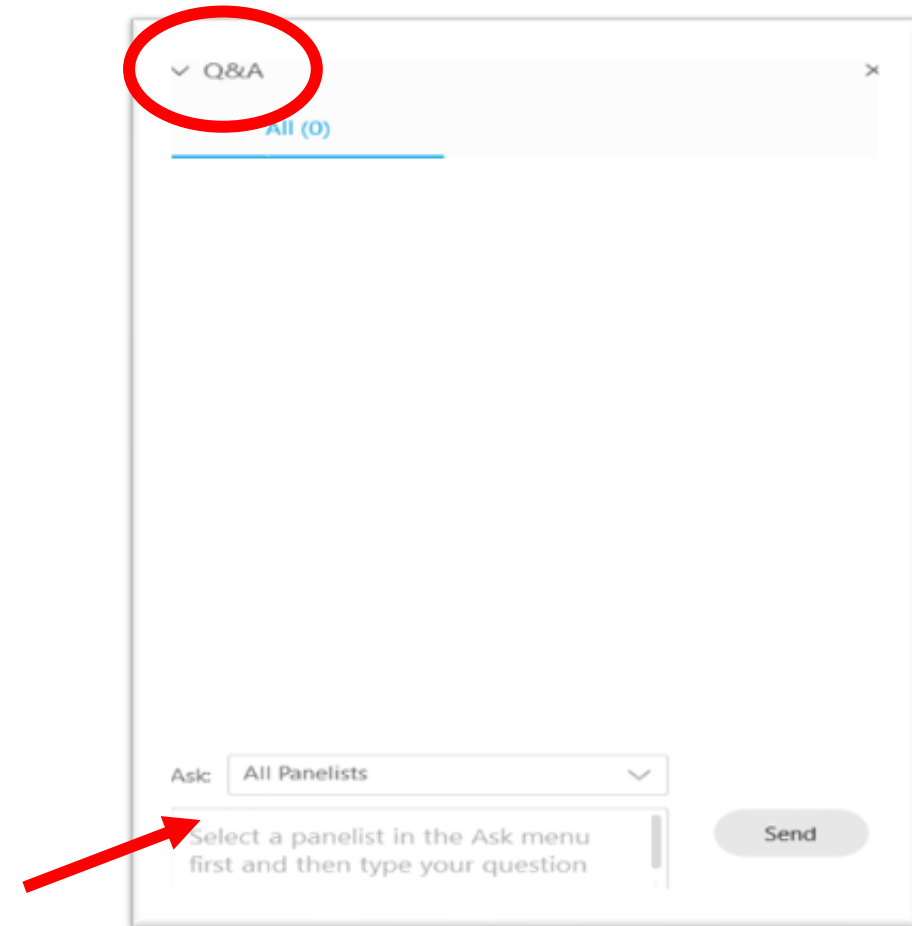
About Webex Events

- Your audio will remain muted and video off throughout the presentation.
- This meeting will be recorded and posted on our website for those who are unable to attend.

Submitting Questions

- Submit questions through the Q&A at any time, select 'All Panelists'.
- Questions will not be answered until we reach the Q&A session at the end of the presentation.
- If you have a specific question and would like us to follow up with you after the meeting, include your name and preferred method of contact.

Thank you for your patience as we try to make this virtual meeting as engaging as possible!



Safety Moment – Hurricane Preparedness



- Create an evacuation plan with your family.
- Secure your home: use storm shutters or board up windows.
- Check your property's exterior: secure lawn furniture, trim shrubs, remove debris from rain gutters or spouts.
- Make sure vehicles have fuel.
- Have emergency supplies: first-aid kit, battery-operated radio, flashlights, bottled water, and canned food
- Download the Dominion Energy app



[This Photo](#) by Unknown Author is licensed under [CC BY-SA](#)

Project Team



John
Project Manager



Rachel
Environmental



Dan
Engineering



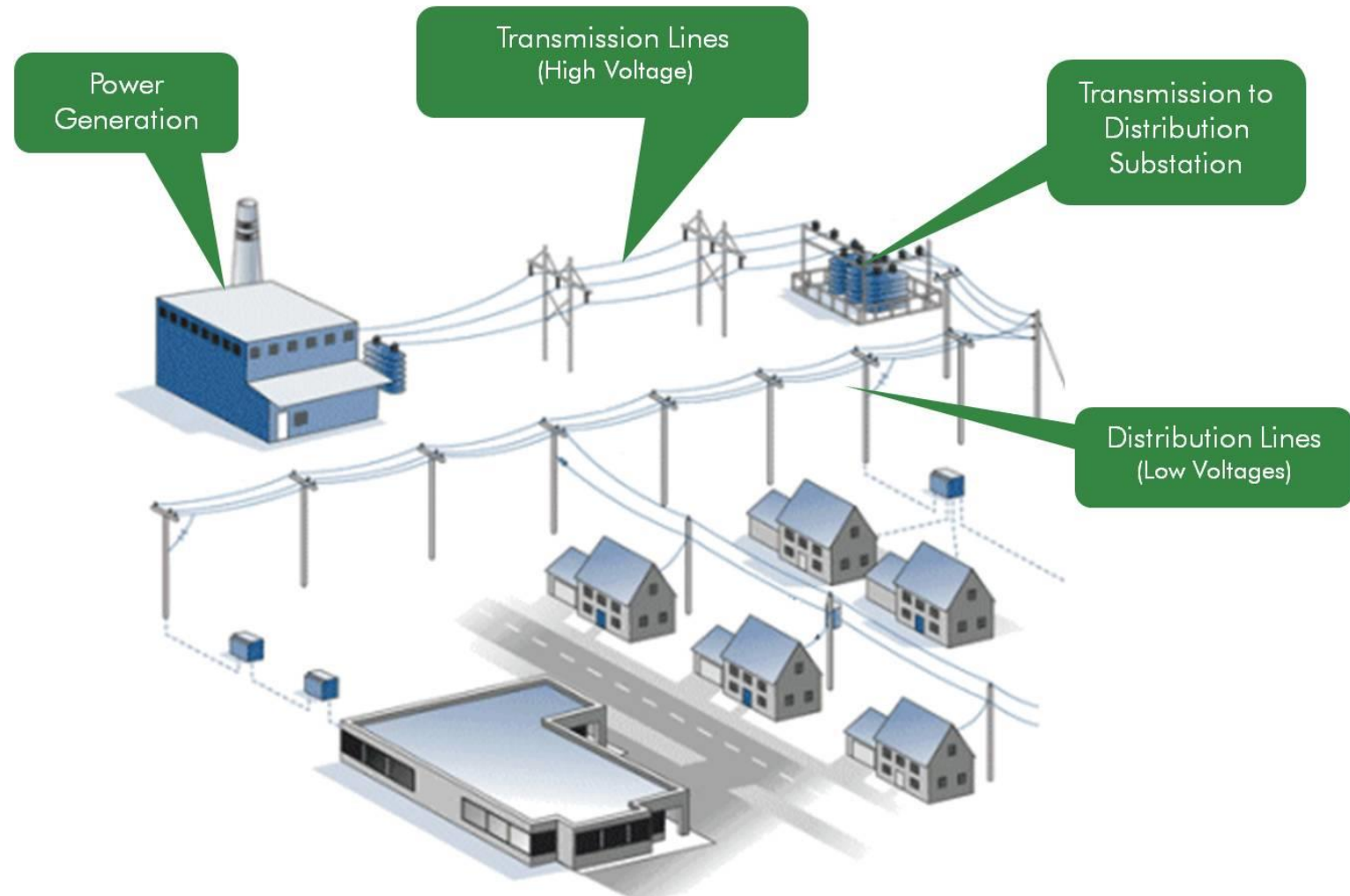
Ann Gordon
Session Host

Electric Transmission Lines 101

Electric transmission and electric distribution lines both carry electricity, but they look different and serve different functions.

Electric transmission lines are high voltage lines that carry electricity from our power stations to substations.

Once the transmission line reaches a substation, the voltage is lowered and delivered to your home or business via electric distribution lines.



Project Overview

- Rebuild 230 kV electric transmission line between Carson and Reams substations (approximately one-mile)
- Weathering steel lattice structures have been in existence since the 1970s and are experiencing corrosion and maintenance issues
- The existing 500 kV line in corridor will not be rebuilt as part of this project




Weathering Steel Corrosion

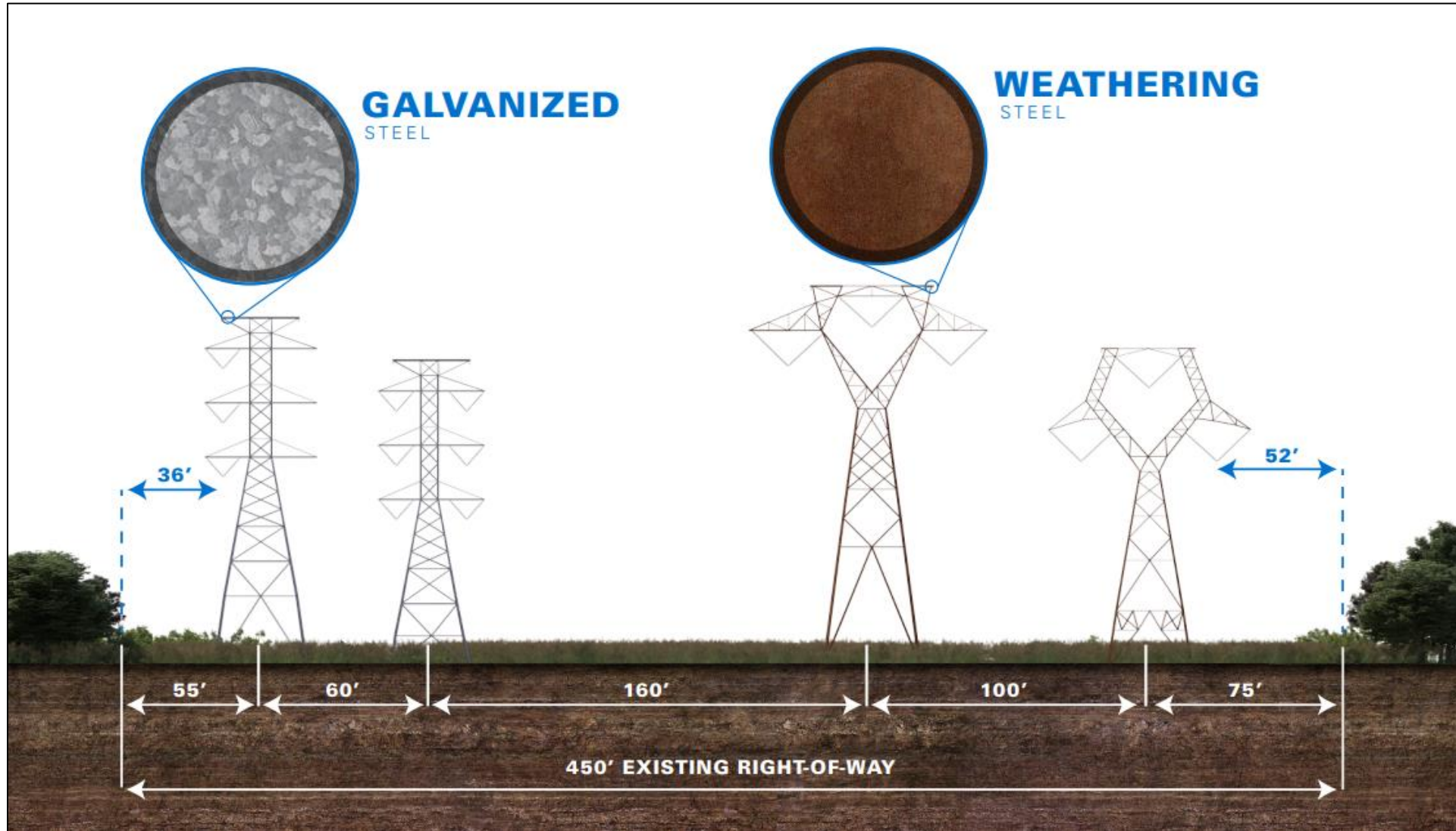


Representative pictures of aging structures.



-  Project Limits
- Structure Type**
-  TL 238/249 3 Pole Existing Structure Location
-  TL 2002 & 238/249 Existing Lattice Structure Location
-  TL 2002 New Structure Location

Right of Way Cross Section

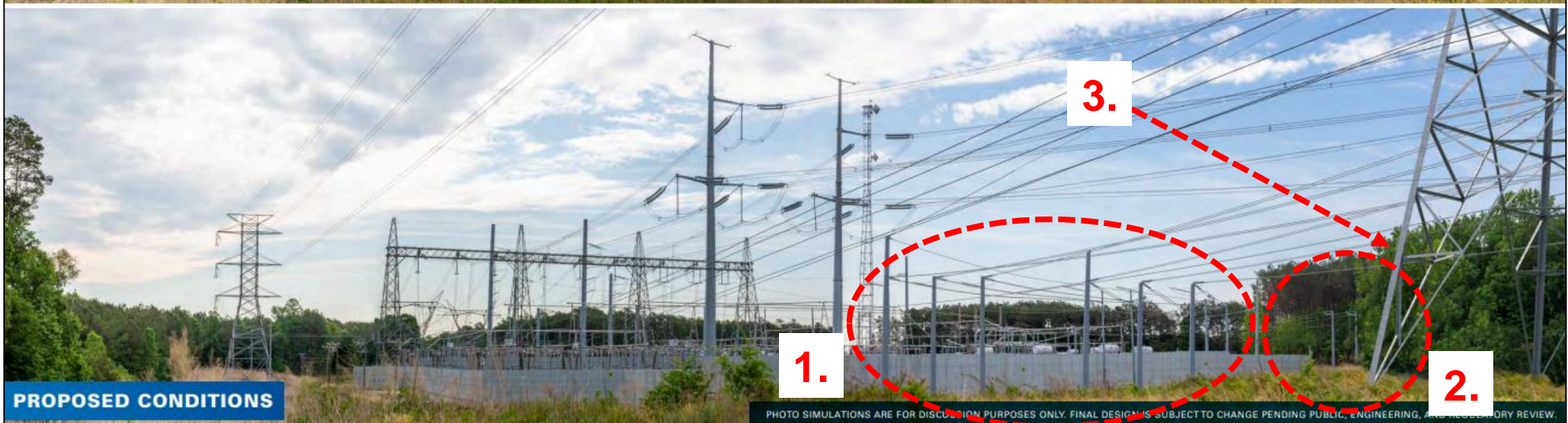


Proposed Structures



PHOTO SIMULATIONS ARE FOR DISCUSSION PURPOSES ONLY. FINAL DESIGN IS SUBJECT TO CHANGE PENDING PUBLIC, ENGINEERING, AND REGULATORY REVIEW.

Proposed Structures



Proposed Structures



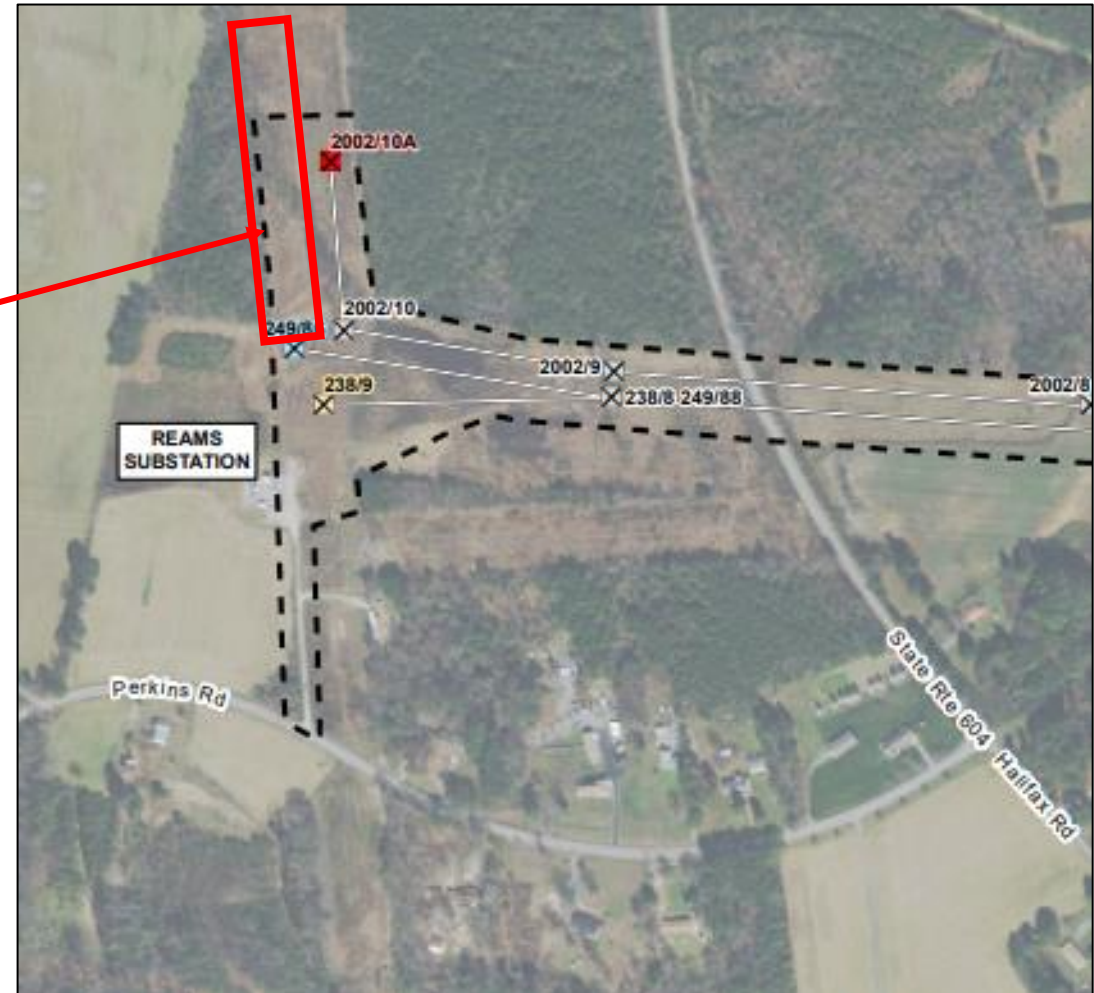
PHOTO SIMULATIONS ARE FOR DISCUSSION PURPOSES ONLY. FINAL DESIGN IS SUBJECT TO CHANGE PENDING PUBLIC, ENGINEERING, AND

Temporary Construction Line

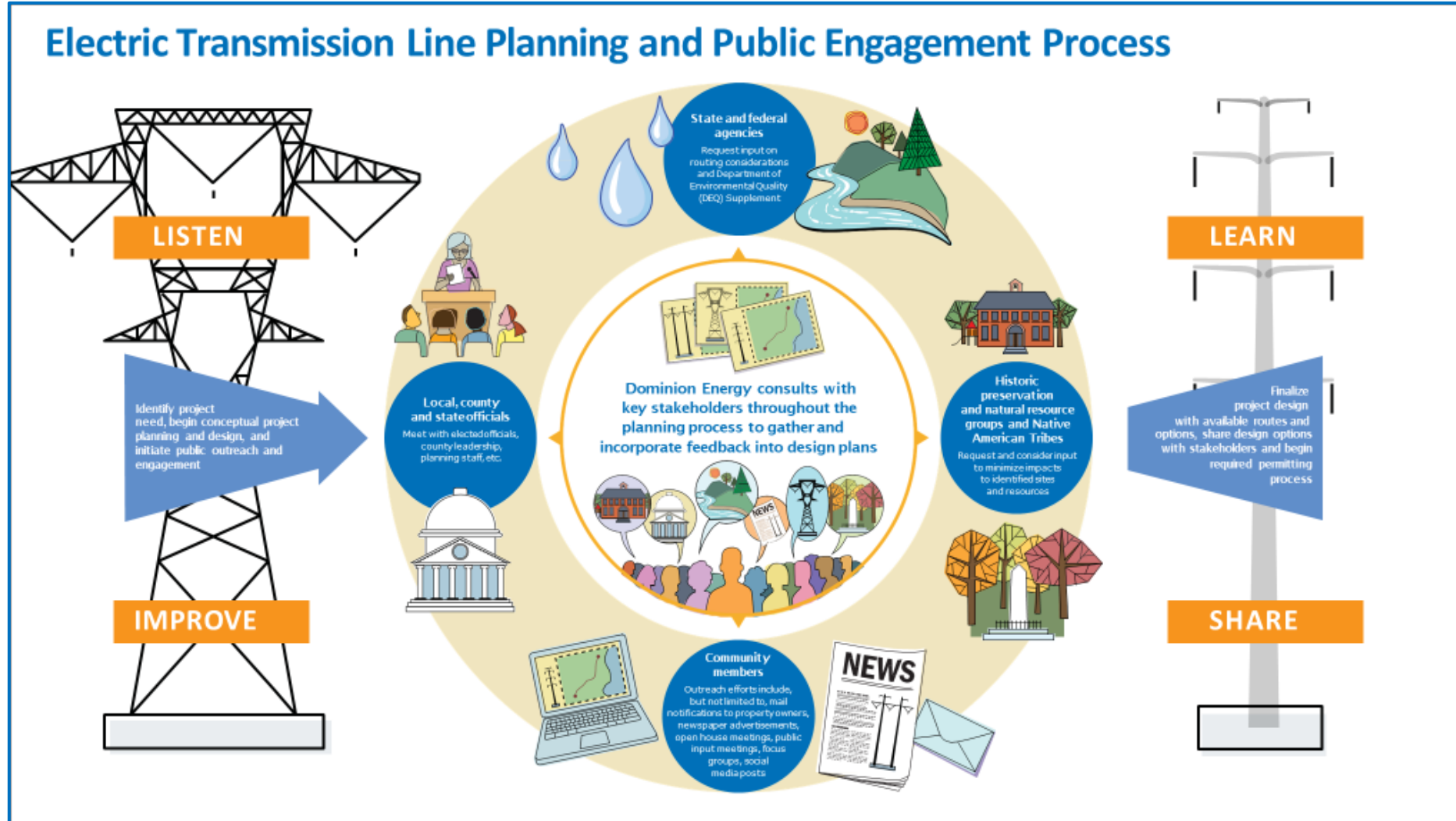
Safety is our #1 priority for our employees, contractors and the community.

- To maintain reliable electric service during construction, a temporary construction line will be built prior to work on the existing lines
- Lines under construction will be de-energized
- Temporary line to be removed upon project completion

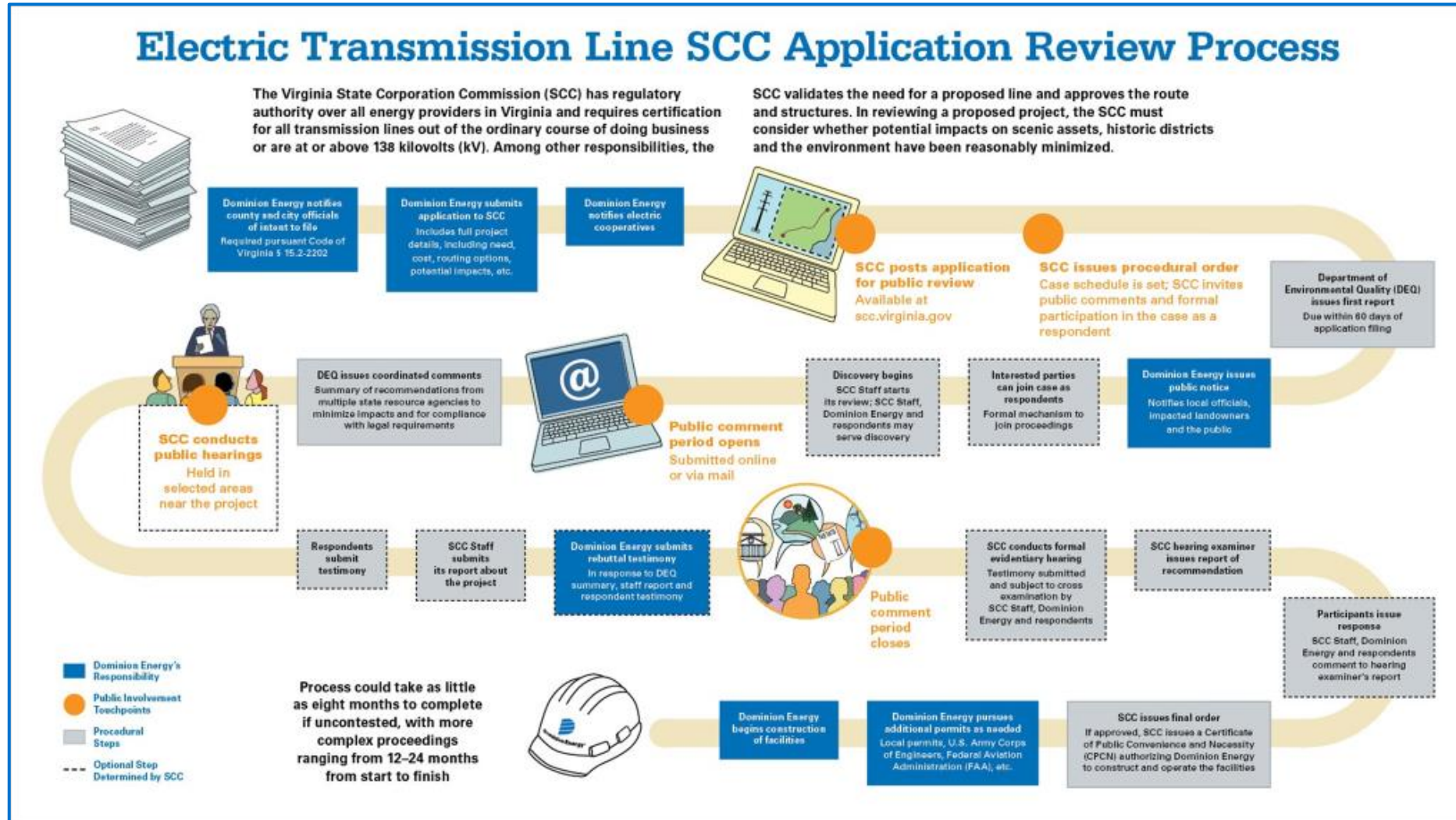
Approximate temporary line location



Public Engagement Process



SCC Application Process

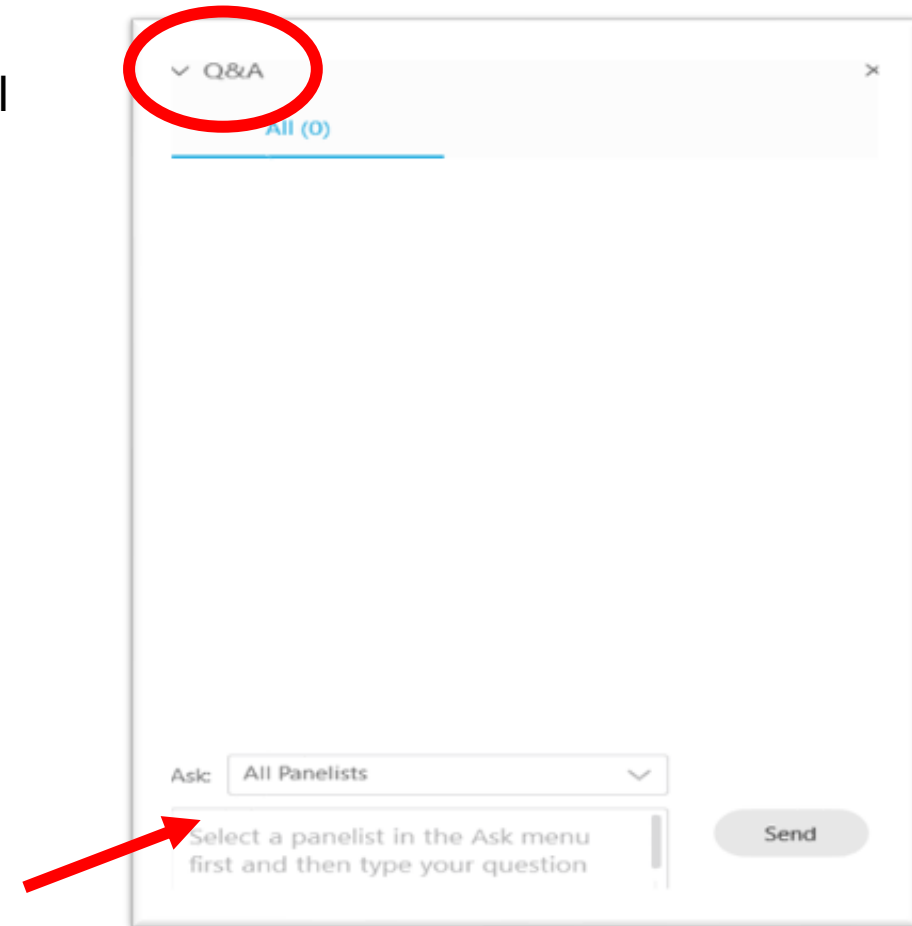


May 2021	<ul style="list-style-type: none">• Project announcement• Solicit input from cultural advocacy groups
Summer 2021	<ul style="list-style-type: none">• Outreach
Late summer 2021	<ul style="list-style-type: none">• File application with Virginia State Corporation Commission (SCC)
Late 2022/Early 2023	<ul style="list-style-type: none">• Anticipated construction start date
Late 2023	<ul style="list-style-type: none">• Target completion date

This schedule is subject to change based on weather, permitting, etc.

- Submit questions through the Q&A at any time, select 'All Panelists'
- Questions will not be answered until we reach the Q&A session at the end of the presentation.
- If you have a specific question and would like us to follow up with you after the meeting, include your name and preferred method of contact.

Thank you for your patience as we try to make this virtual meeting as engaging as possible!



Questions?

**Project Website:
[DominionEnergy.com/carsonreams](https://www.dominionenergy.com/carsonreams)**



**Contact our project team by sending an email
to
powerline@dominionenergy.com or by calling
888-291-0190**

