

# Centreport 230 kV Electric Transmission Rebuild Project

STAFFORD COUNTY, VIRGINIA



AT DOMINION ENERGY, we are committed to providing the reliable, affordable, and increasingly clean energy that powers our customers every day. Stafford County is experiencing growing energy demands. To address this development, new electric transmission infrastructure is needed.

## PROJECT NEED

Due to recent growth and future development on the horizon in Stafford County, there is a need for new electric transmission infrastructure investments to maintain grid reliability. The proposed Centreport 230 kilovolt (kV) Electric Transmission Project will allow us to meet the growing energy needs, continue reliable electric service, and maintain compliance with federal reliability standards.

The Centreport 230 kV Electric Transmission Project proposes to build a new substation, located on Centreport Parkway and a corresponding double-circuit 230 kV electric transmission line to connect the new substation to an existing electric transmission line in the area.

Dominion Energy has an obligation to serve and maintain reliability for all customers. Entities such as PJM – which operates the electric grid in 13 states – and NERC, North American Electric Reliability Corporation, enforce standards to ensure reliability and the prudence of investments by utility companies like Dominion Energy.



## PROJECT SCHEDULE

SUBJECT TO CHANGE

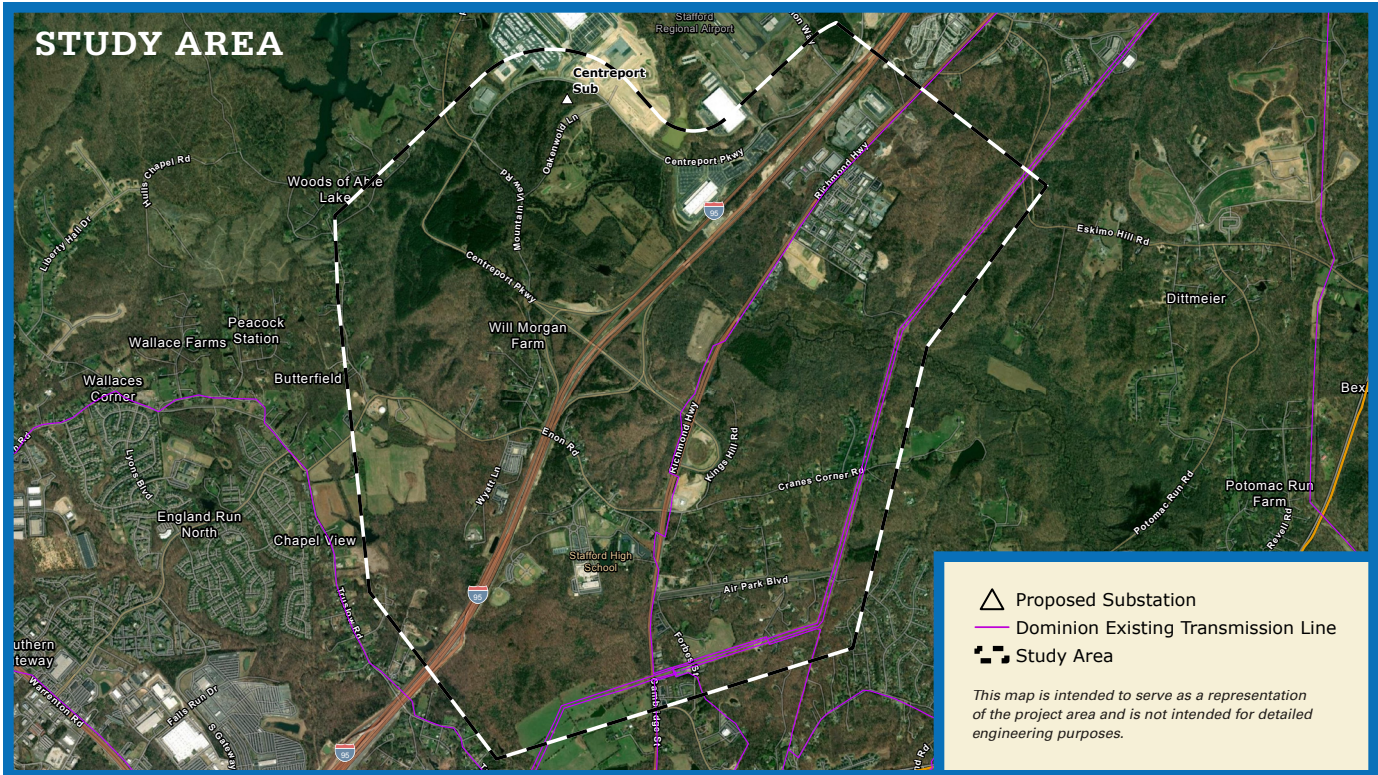
DATE	ACTIVITY
Early 2024	Project announcement
Spring – Summer 2024	Community meetings
Fall 2024	File application with the Virginia State Corporation Commission (SCC)
Fall 2025	Anticipated SCC ruling
2026	<ul style="list-style-type: none"><li>• Permitting</li><li>• Finalize engineering</li><li>• Pre-construction outreach</li></ul>
Summer 2026	Construction to begin
Summer 2027	Construction complete, restoration begins



SCAN HERE TO  
LEARN MORE

## QUICK FACTS

- **LOCATION** – Hartwood District of Stafford County, just south of the Stafford Regional Airport.
- **STUDY AREA** – The area currently under consideration for new corridors to connect the future substation to an existing transmission line. The future substation will be located approximately 1.8 miles west of an existing 230 kV transmission line.
- Dominion Energy will review multiple route options, and list one proposed route to the Virginia State Corporation Commission (SCC), with alternatives listed. Only one route will be selected to construct.
- The routes shown are subject to change. Stay up to date by visiting our interactive mapping tool on our project website.
- Attend our community meetings or contact our team to share feedback on the routes.



## DETERMINING THE ROUTES

Dominion Energy is currently in the initial stages of the siting and routing process. All route options will need to connect the new Centreport Substation to an existing 230 kV transmission line in the area.

Planning and determining an electric transmission route are one of the most challenging things we do at Dominion Energy. We recognize the impact a new transmission line has on the community. Multiple factors are considered when deciding where to build a new line including, but not limited to, land use, historic and cultural resources, environmental impacts, wetlands, environmental justice, and tribal property. We consider these factors to avoid or limit community impact.

Ultimately, the SCC reviews the routing options and chooses the route the company must build.

## PROJECT OVERSIGHT AND APPROVAL

The SCC is the regulatory body with jurisdiction over transmission lines at or above 138 kilovolts (kV). Since this project is proposing a new double-circuit 230 kV electric transmission line, it meets the criteria to be reviewed by the SCC. Dominion Energy will file an application with the SCC to review whether the project is needed, and which route reasonably minimizes impacts while remaining financially prudent for our customers.

Although the SCC is the primary agency reviewing and ultimately approving the project, there may be additional permits needed from various agencies, such as the Army Corps of Engineers. Our SCC application and associated documents are made public upon filing and will be available for viewing. Visit the legal section of our project website for more details.

## YOUR FEEDBACK MATTERS

We want to hear your input on our proposed routes, as the routes have not been finalized. The purpose of our public engagement is to share, listen and learn in order to make appropriate project changes. The SCC also considers public input in its review process. There are multiple ways to share your feedback with our team:

- Contact us by phone at 888-291-0190 or email at [powerline@dominionenergy.com](mailto:powerline@dominionenergy.com).
- Leave your comments in our interactive mapping tool, which will be available on our project website in spring 2024.
- Attend our community meetings.
- Invite us to your community or property.



### FOR MORE INFORMATION

Visit our website at [DominionEnergy.com/centreport](https://DominionEnergy.com/centreport).

You may also contact us by sending an email to [powerline@dominionenergy.com](mailto:powerline@dominionenergy.com) or calling 888-291-0190.