



April 10, 2024

**Proposed Centreport 230 kV Electric Transmission Project**

Dear Neighbor,

At Dominion Energy, we are dedicated to keeping our communities up to date on projects in their area. Last month, we announced a new project in Stafford County, known as the Centreport 230 kV Electric Transmission Project.

The project proposes a new substation, located on Centreport Parkway, and an associated double-circuit 230 kilovolt (kV) electric transmission line. We are currently in the planning stages of the project; our team is reviewing all electrical and construction options.

Routes have not been finalized. However, we have enclosed a map with the routes under consideration. To view the routes in more detail, visit our website, [DominionEnergy.com/centreport](http://DominionEnergy.com/centreport). For your convenience, a new interactive mapping tool has been launched on the website where you can zoom in on potential routes, measure distances, and more.

While multiple routes will be evaluated, one proposed route with alternatives will be submitted to the Virginia State Corporation Commission (SCC) for final evaluation and approval. Only one route will be selected to construct.

You are invited to learn more about the routing process and project details at our upcoming community meeting:

**Tuesday, April 23, 2024  
Rowser Building, Room A  
1739 Jefferson Davis Hwy  
Stafford, VA 22554  
5:30-7:30 p.m.**

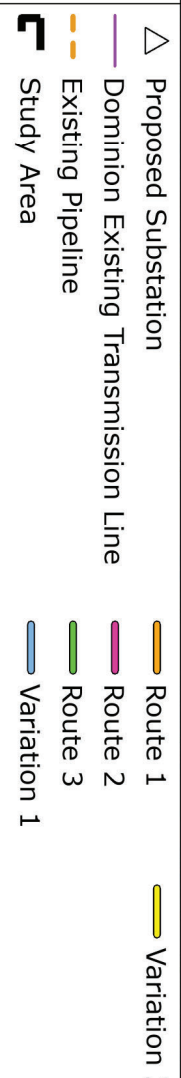
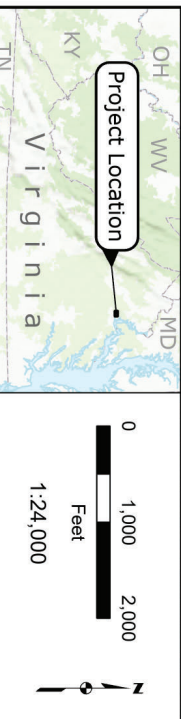
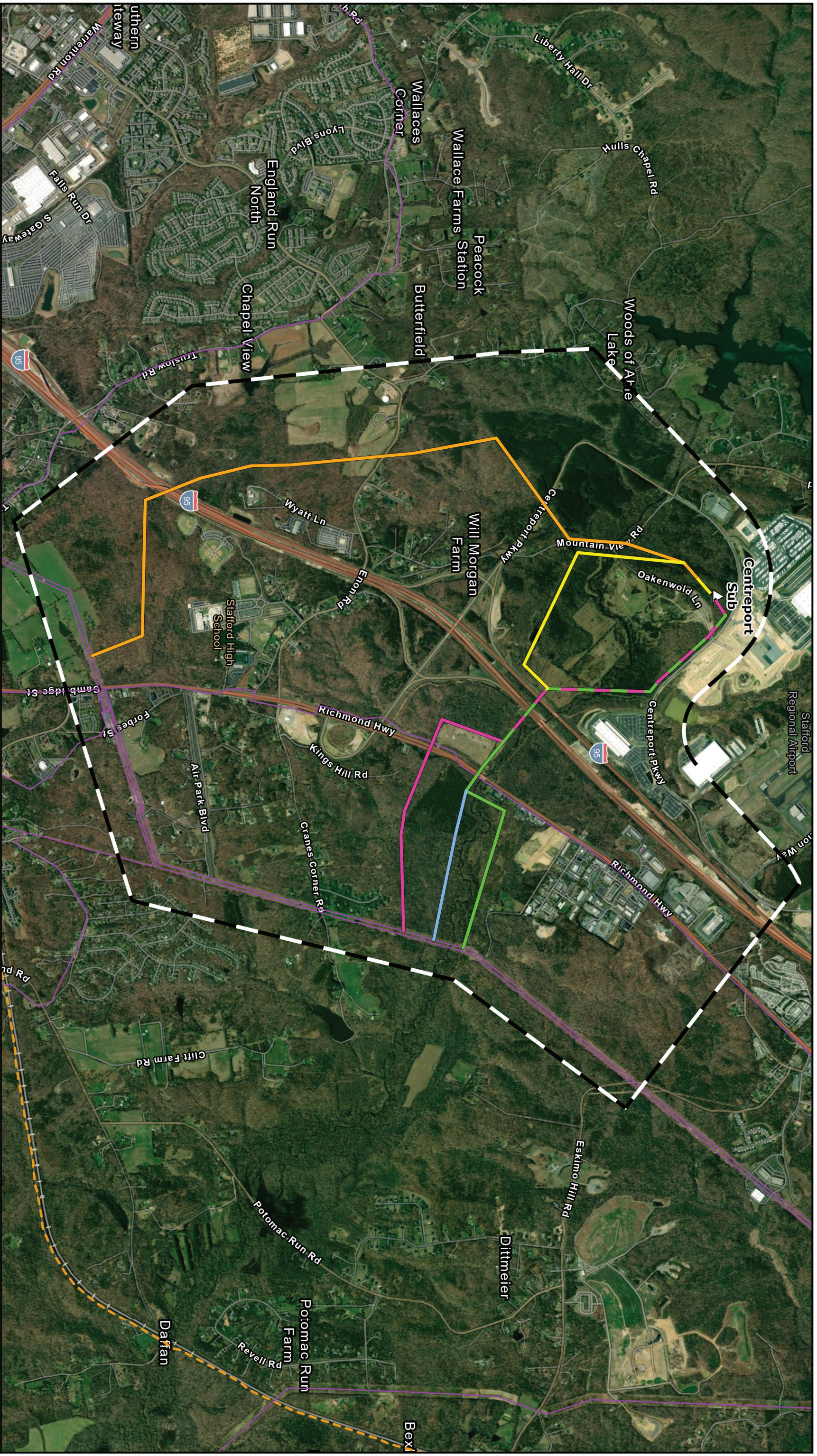
For questions about the project, contact our project team by email at [powerline@dominionenergy.com](mailto:powerline@dominionenergy.com) or by phone at 888-291-0190.

Thank you for your understanding while we plan for long-term reliability investments in your community.

Sincerely,

The Electric Transmission Project Team

Enclosure: Project Map



△ Proposed Substation  
 — Dominion Existing Transmission Line  
 - - - Existing Pipeline  
 C Study Area

Route 1  
 Route 2  
 Route 3  
 Variation 1  
 Variation 2

**Study Area**  
**Centerport 230 kV Transmission Line Project**  
 Dominion Energy Virginia  
 Stafford County, Virginia

ERM

Dominion Energy

DRAWN BY: NAD

M:\S\_M\US\Projects\D-F\Dominion\Centerport\ArcGIS\2024\03\Routes\_OV\_Fig\_DOM\_CTP\_Routes\_Fig.aprx|DOM\_CTP\_StudyArea | REVISED: 03/19/2024 | SCALE: 1:24,000 when printed at 11x17