

Electric Transmission
P.O. Box 26666
Richmond, VA 23261



Actions Speak Louder

Investing in Our Communities



Local Power Line
Project Information
Enclosed

Dominion Energy image. Not project specific.



IMPORTANT

Local Power Line Project Information

Use your iPhone camera or the QR reader app on other smartphones to visit the project page on our website.



Churchland to Hodges Ferry 115 kilovolt (kV) Electric Transmission Rebuild Project

AT DOMINION ENERGY, we are committed to continually reviewing and analyzing our energy infrastructure to provide safe, reliable, and affordable electricity to the communities we serve. You are receiving this postcard because we are planning to rebuild the 115 kilovolt (kV) electric transmission line from our Churchland Substation to our Hodges Ferry Substation in Chesapeake, Virginia. This work is necessary to help maintain reliable service in your area.

Preconstruction activities, including tree/brush clearing, wooden mat access roads and right of way clearing, are scheduled to begin in summer 2022. Transmission line work will begin in August 2022 through December 2022. Your electric service is not expected to be interrupted as a result of this project.

In addition, we want to inform you that in the wake of ongoing public health concerns from the spread of the coronavirus, we are mindful of our activities and maintaining property owner interactions with the appropriate social distancing.

We will continue to update you as activities progress. Thank you for your patience and understanding as we work to complete this important project.



This map is intended to serve as a representation of the project area and is not intended for detailed engineering purposes.

WHAT:

Dominion Energy currently operates an overhead 115 kilovolt (kV) electric transmission line that was constructed primarily on wood H-frame, and wood three poles in 1957. The line needs to be rebuilt to current electric reliability standards based on end-of-life concerns.

WHY:

This rebuild will be replacing structures from our Churchland Substation to Hodges Ferry Substation with weathering steel H-Frames/Engineered structures.

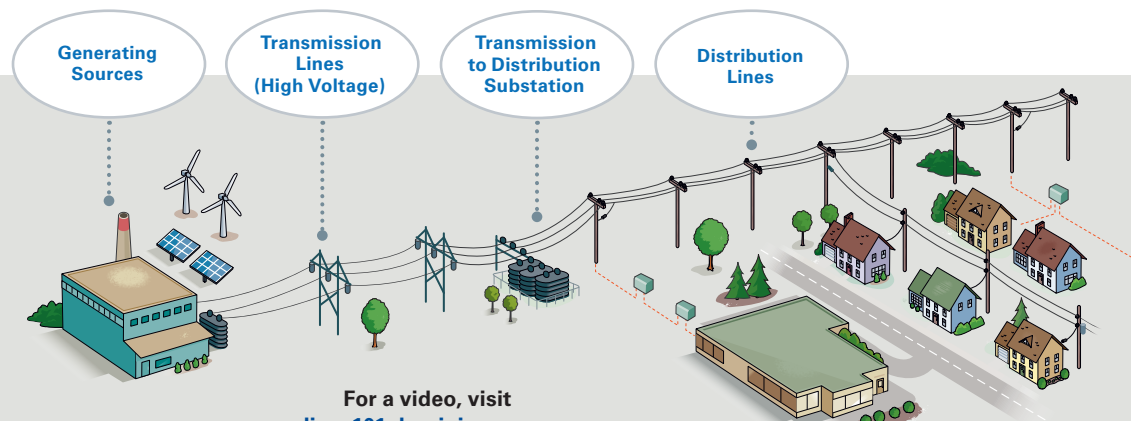
CONTACT US

Visit our website at powerlines101.dominionenergy.com to learn about our construction processes. Or contact us by sending an email to powerline@dominionenergy.com or calling 888-291-0190.

At Dominion Energy, we know many of our customers are facing challenges due to the COVID-19 pandemic. We're here to help. In accordance with the law recently passed in Virginia, we're offering payment plans between 6 and 24 months. To set up a payment plan, or view additional assistance options, please visit DominionEnergy.com or call 1-866-366-4357.

Delivering Clean, Safe, Affordable and Sustainable Energy

Transmission lines are the tall, high-voltage lines that carry electricity over long distances from power generation facilities to substations.



For a video, visit powerlines101.dominionenergy.com.