

Crystal Substation Virtual Community Meeting



Agenda

- Project Overview
- Updates
- Construction Overview
- Public Art Update
- Q&A



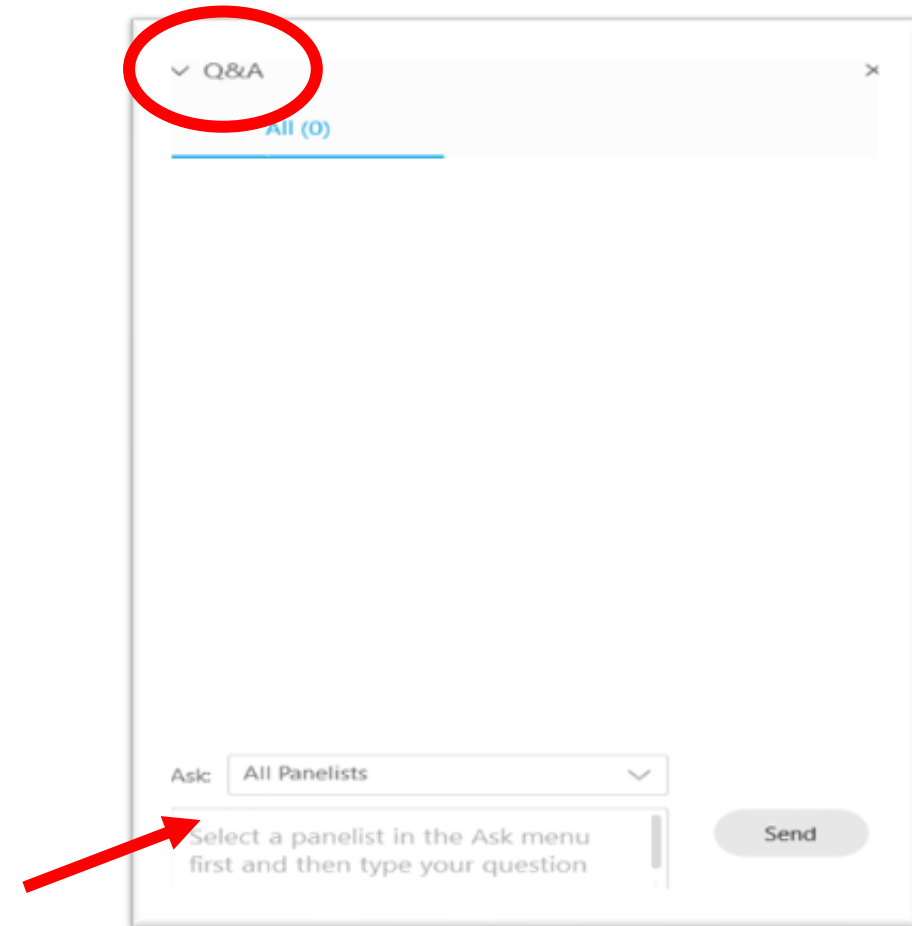
About Webex Events

- Your audio will remain muted and video off throughout the presentation.
- This meeting will be recorded and posted on our website for those who are unable to attend.

Submitting Questions

- Submit questions through the Q&A at any time, select 'All Panelists'.
- Questions will not be answered until we reach the Q&A session at the end of the presentation.
- If you have a specific question and would like us to follow up with you after the meeting, include your name and preferred method of contact.

Thank you for your patience as we try to make this virtual meeting as engaging as possible!



Project Team



Ann Gordon Mickel

Dominion Energy
Communications



Coulter Toatley

Dewberry
Senior Designer



Matt Tofani

Clark
Construction Manager



Tim Sargeant

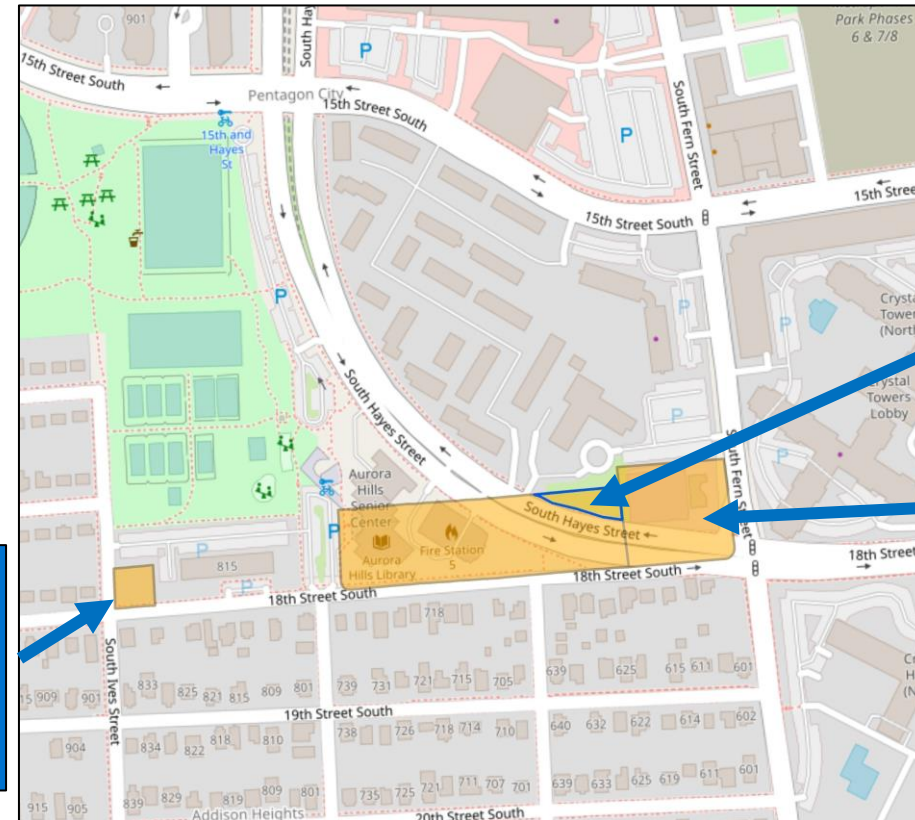
Dominion Energy
External Affairs
Q&A Session Moderator

Stay tuned...

For a surprise
special guest!

Project Overview

- We are preparing to begin construction at our Crystal Substation.
- A land exchange is also included in this project.
- This project will allow us to continue providing safe, reliable electric service to the community and make visual improvements to the substation.



Vacant
Dominion
Energy
owned
parcel

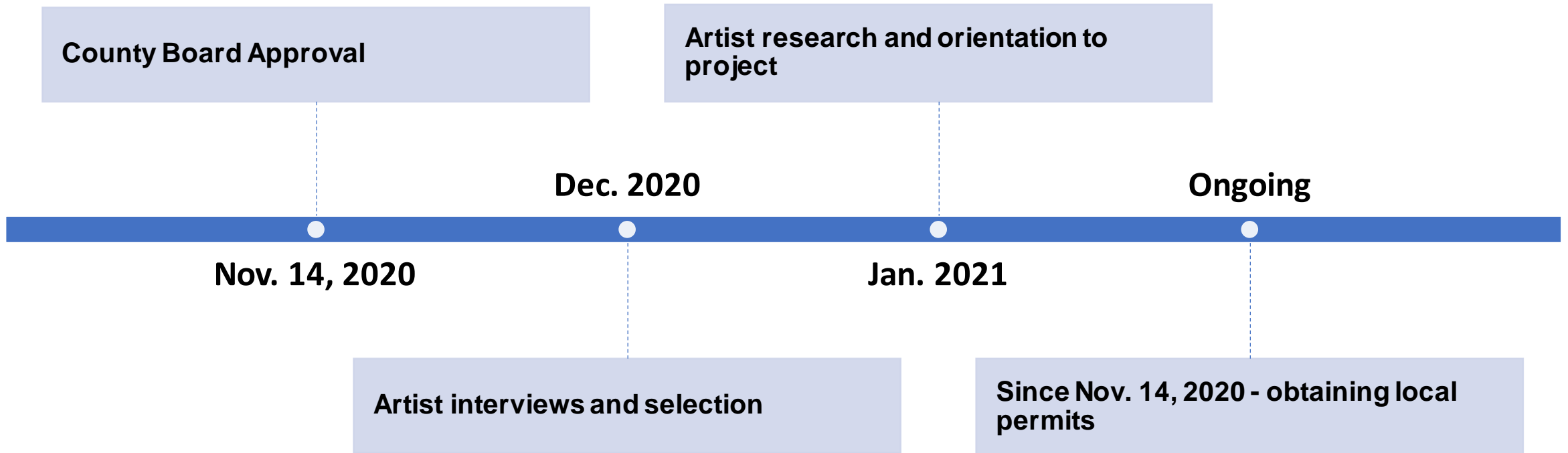
Approximate
proposed
expansion
area

Crystal
Substation



*Located at the
intersection of
South Hayes
Street and South
Fern Street*

Project Update



Construction: What to Expect



Construction is expected to begin mid-April 2021, pending receiving final approvals.

Work Hours

Typical work hours	Monday-Friday 7 a.m. – 5 p.m.
Arlington County allowable work hours	Monday-Friday 7 a.m. – 9 p.m.
Saturday-Sunday	9 a.m. – 9 p.m.

- Sidewalk closures
- Equipment on-site
- Noise expected

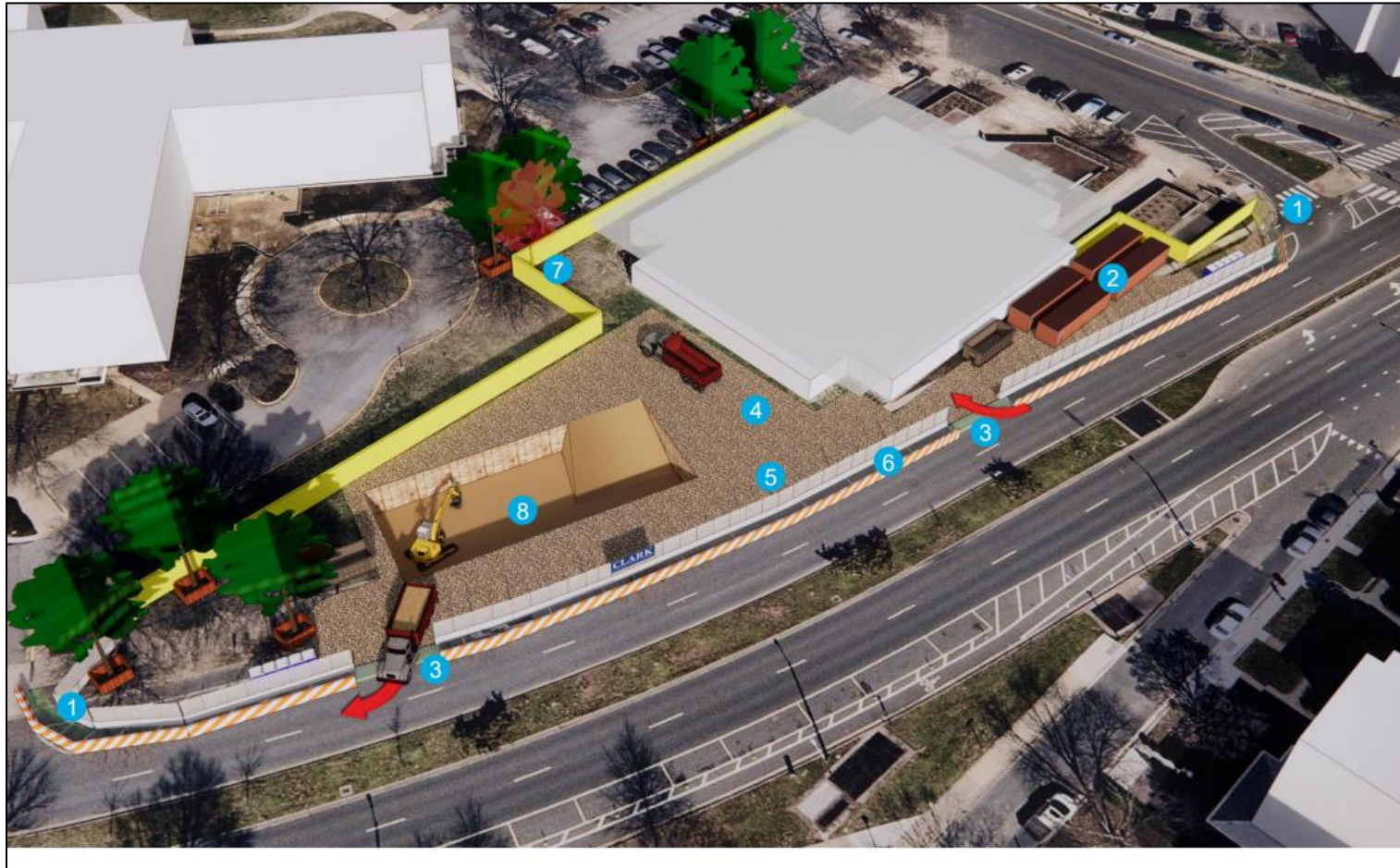
Safety is our #1 priority for our employees, contractors and the community.

To receive construction updates by email, send us a message with your email address through the Q&A or send an email to powerline@dominionenergy.com



Construction Phase 1: Excavation

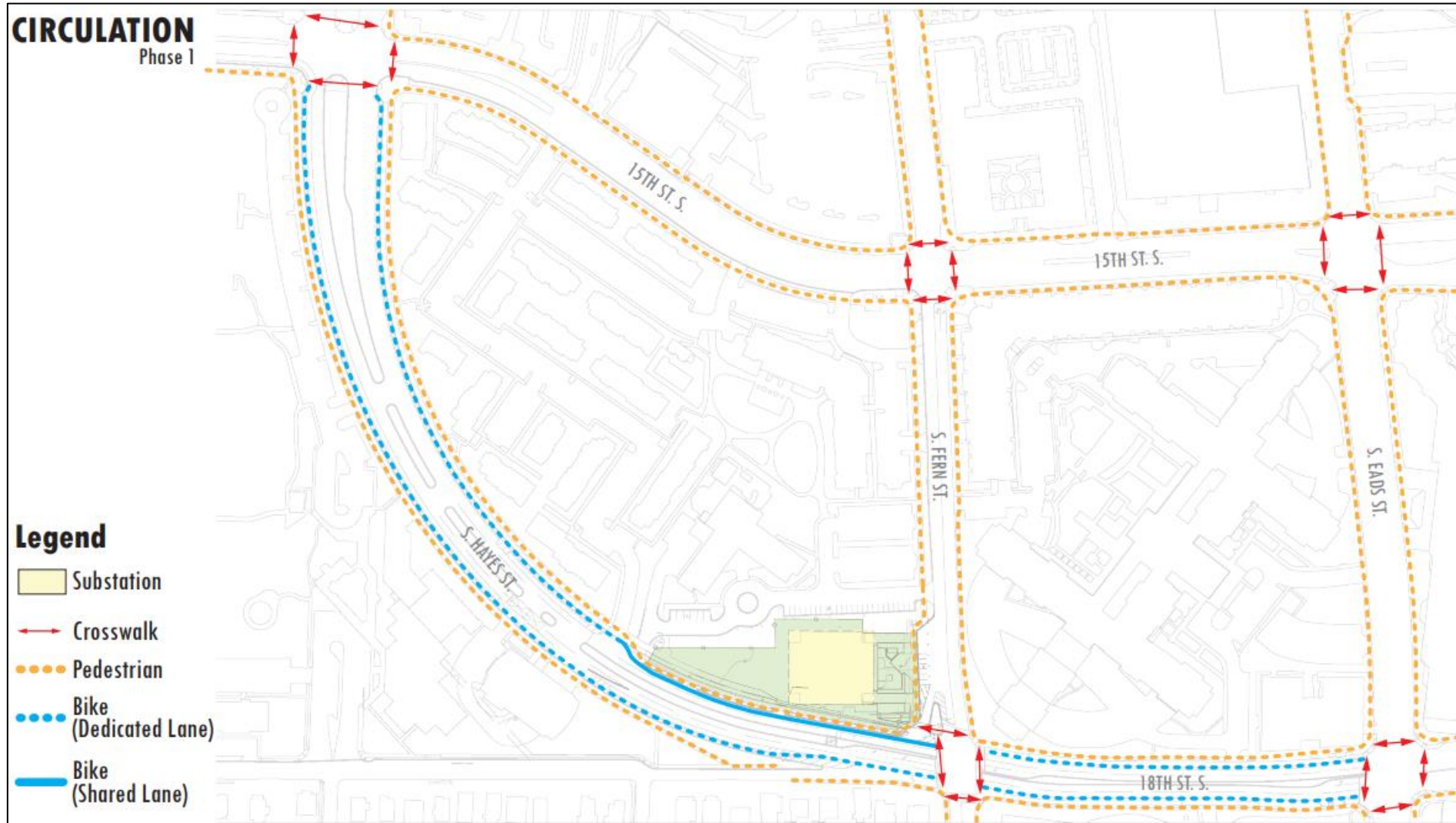
Spring-Summer 2021



KEY

1	Personnel Gate
2	Site Laydown and Storage Area
3	Stabilized Construction Entrances
4	Leveled Temporary Fill & Haul Route
5	Delivery Truck Staging
6	Pedestrian Sidewalk with Jersey Barriers
7	Site Fence
8	Excavation

Impacts to Traffic



Construction Phase 2: Construct Basement for New Building



Fall 2021



KEY	
1	Personnel Gate
2	Site Laydown and Storage Area
3	Stabilized Construction Entrances
4	Leveled Temporary Fill & Haul Route
5	Concrete Truck Staging
6	Pedestrian Sidewalk with Jersey barriers
7	Site Fence
8	Cast In Place Concrete
9	110t Lattice Boom Crawler Crane

Construction Phase 3: Precast Structures

Fall 2021- Early 2022

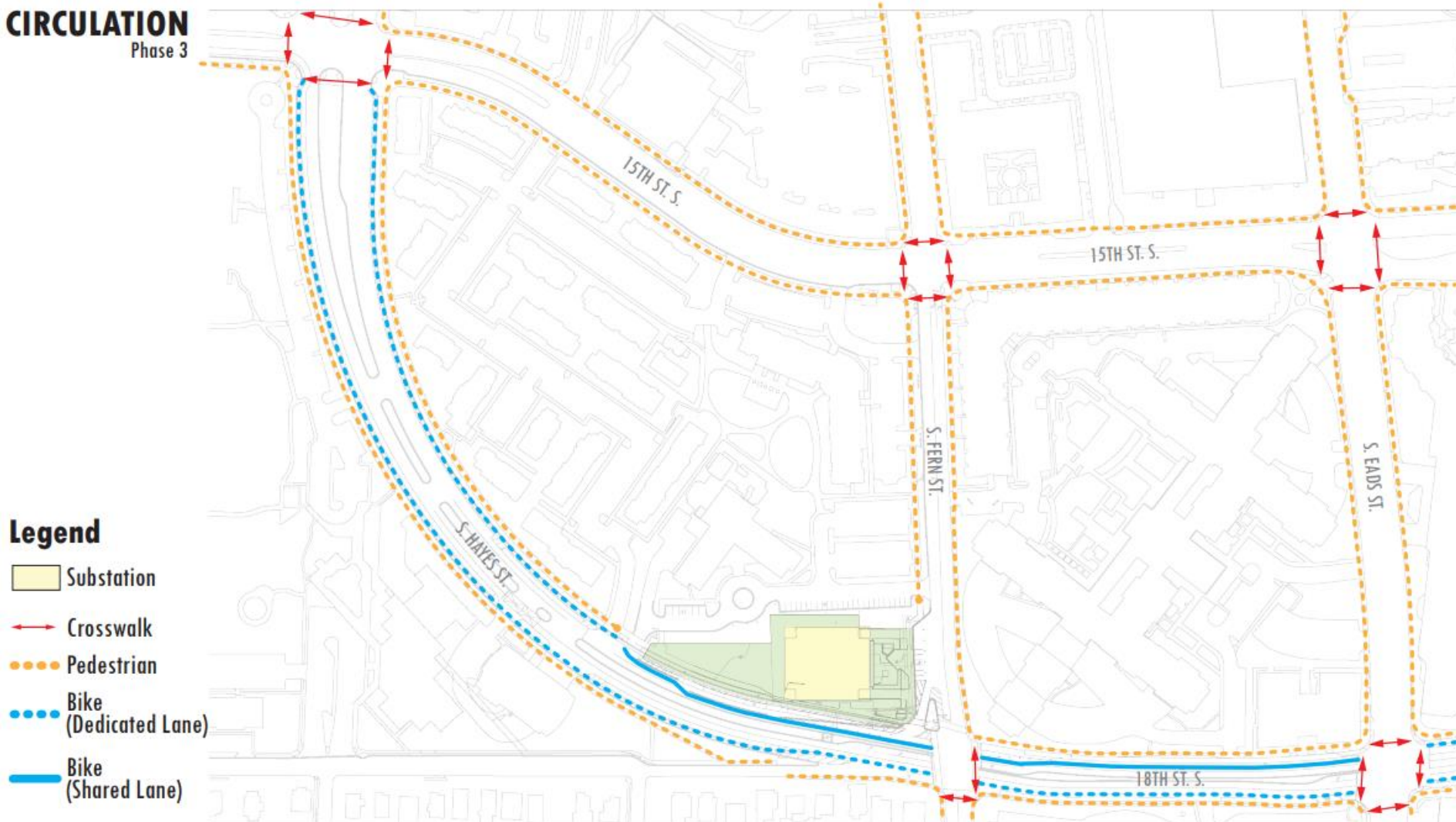


KEY






1	Personnel Gate
2	Site Laydown and Storage Area
3	Stabilized Construction Entrances
4	Leveled Temporary Fill & Haul Route
5	Delivery Truck Staging
6	Pedestrian Side Walk
7	Site Fence
8	Precast Structure
9	500T GMK7550 Crane

Impacts to Traffic

CIRCULATION Phase 3

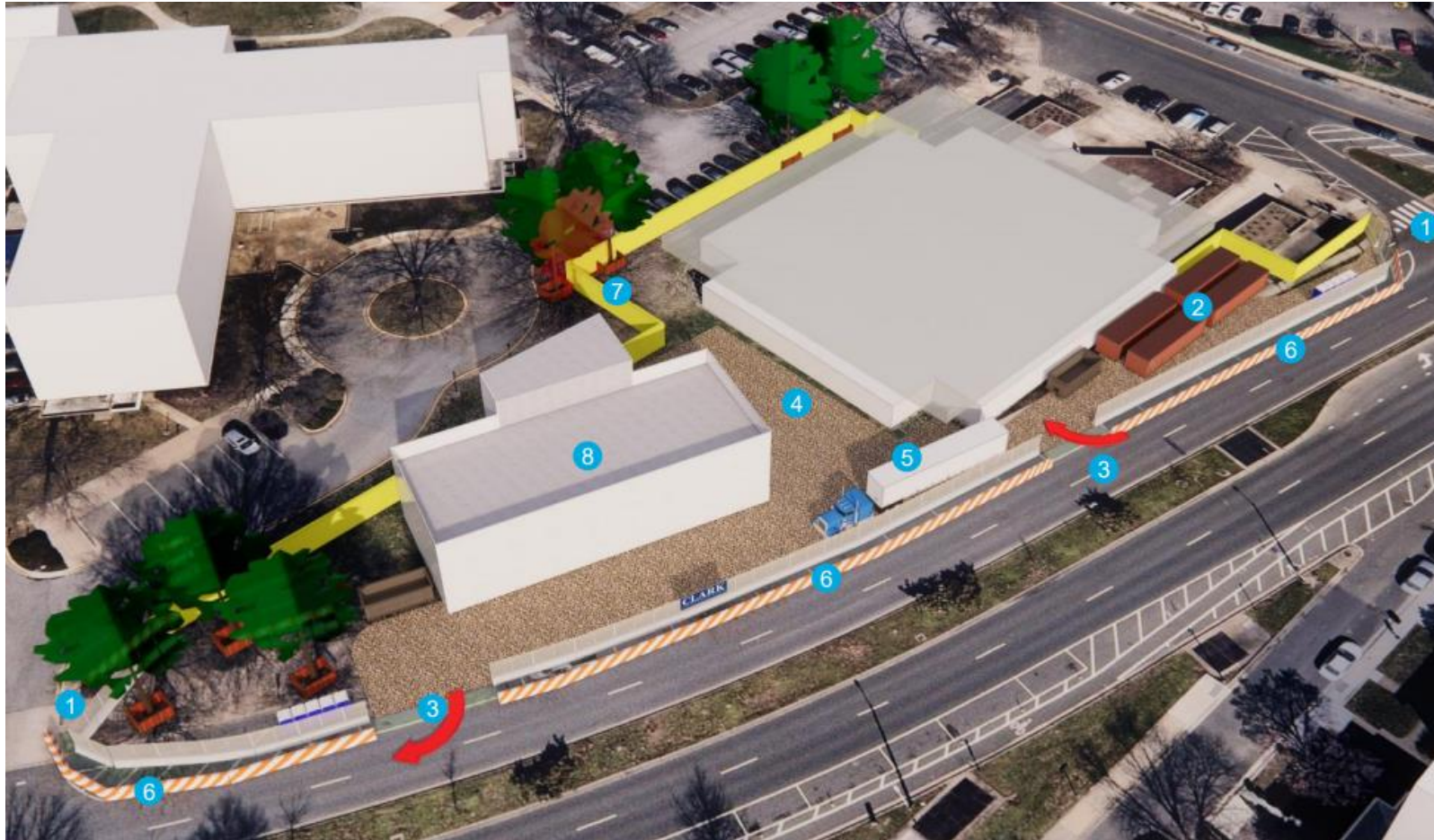


Legend

-  Substation
-  Crosswalk
-  Pedestrian
-  Bike (Dedicated Lane)
-  Bike (Shared Lane)

Construction Phase 4: Structure Completion

Spring-Summer 2022



KEY	
1	Personnel Gate
2	Site Laydown and Storage Area
3	Stabilized Construction Entrances
4	Leveled Temporary Fill & Haul Route
5	Concrete Truck Staging
6	Pedestrian Sidewalk with Jersey barriers
7	Site Fence
8	Structure Topped Out

Ives Street Parcel

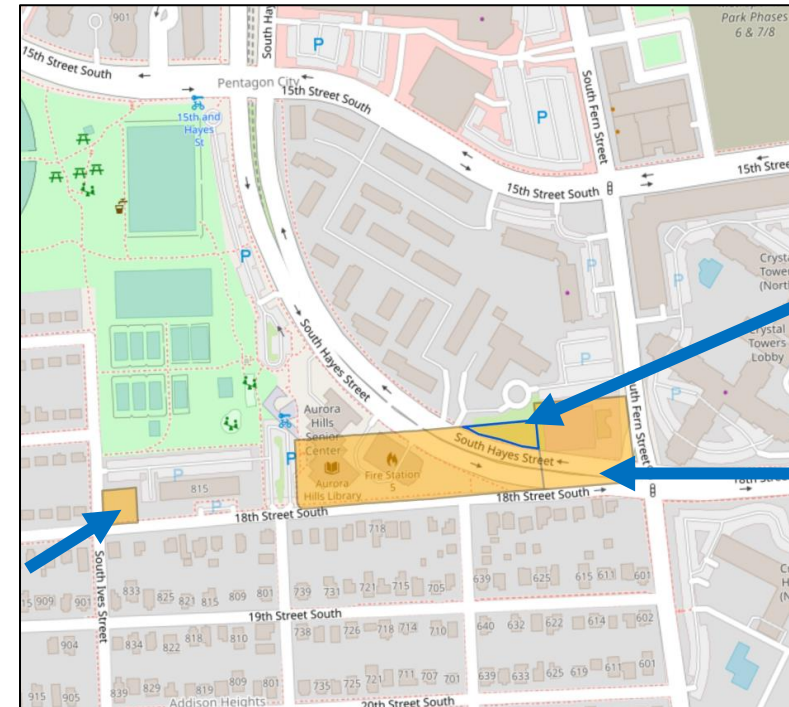
We have entered a land exchange agreement with Arlington County to receive a portion of the adjacent property for the substation expansion.

We will lease the Ives Street Parcel during construction.

- Laydown/storage area
- Crew parking

Neighbors may notice vehicles entering/exiting the site during work hours.

Arlington County will follow a process to determine the future use for the site.



Vacant
Dominion
Energy Owned
Parcel S. Ives &
18th St

Approximate
Proposed
Expansion Area

Crystal
Substation

Plaza Redesign

- Install vegetation native to area
- Space available for pedestrian and bicycle traffic, dogs on leash but does not serve as primary attraction

Looking south



Looking southwest



Looking east



Public Art Vision and Goals

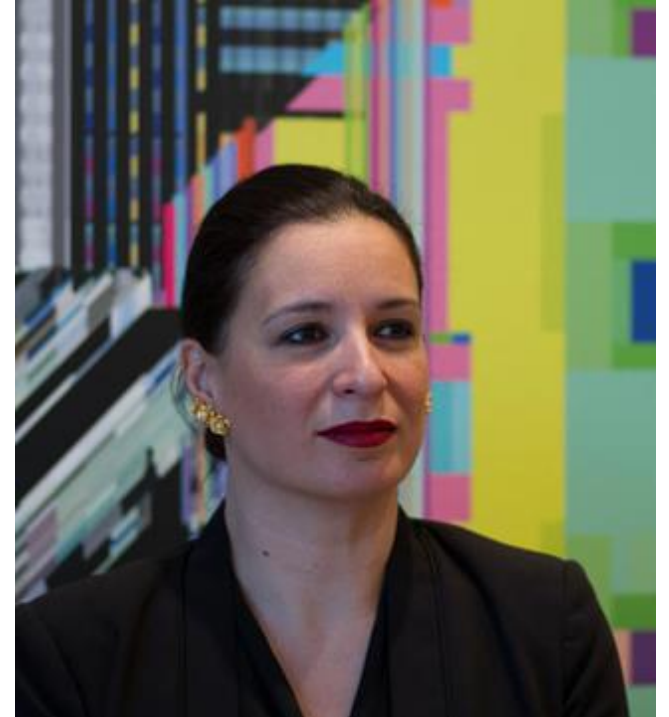


- Contribute to the overall identity of National Landing as a place to encounter world-class works of art
- Create a landmark at this important intersection and gateway into National Landing
- Activate the building's ground floor and bring inspiration and delight to the experience of walking down South Hayes Street
- Maintain visual continuity with the exterior of the building
- Provide interest in day and nighttime settings
- Be durable and low maintenance

Elena Manferdini, principal of Atelier Manferdini has more than 20 years of experience in public art, architecture and education. Atelier Manferdini has completed projects in the US, Europe and Asia.

Recognition

- 2013: COLA Fellowship, given by the Los Angeles Department of Cultural Affairs
- 2016: PAN Award for best public art project in North America.
- 2019 as the Icon Award Winner for her outstanding contributions to the design industry, as well as the community.

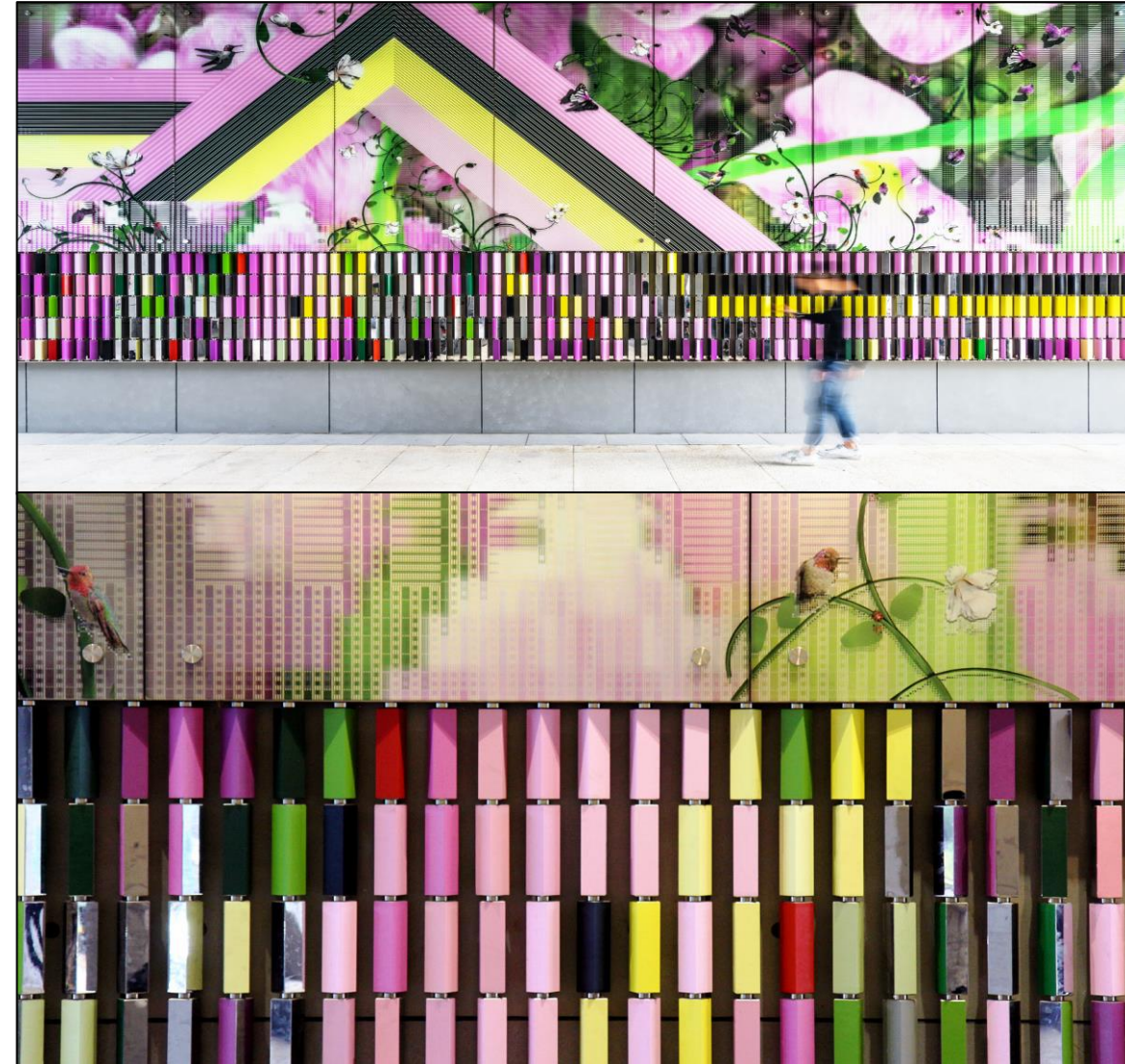


Elena Manfredini

Previous Work

KAIDA Center of Science & Design - 2019 Dongguan, China

Design of feature interactive wall, glazing graphic and elevator lobbies for Kaida Center of Science and Design in Dongguan, China.



Elena Manferdini

Previous Work



Alexander Montessori School - 2017 Miami, FL

"Hibiscus" Shading Panel design for Alexander Montessori School facade in Miami, Florida. In 2018, it won the Green Building Award for the state of Florida, AIA 2018. In 2017, the project received two **AIA** Miami design awards: People's Choice Award of Excellence and Merit Award of Excellence.

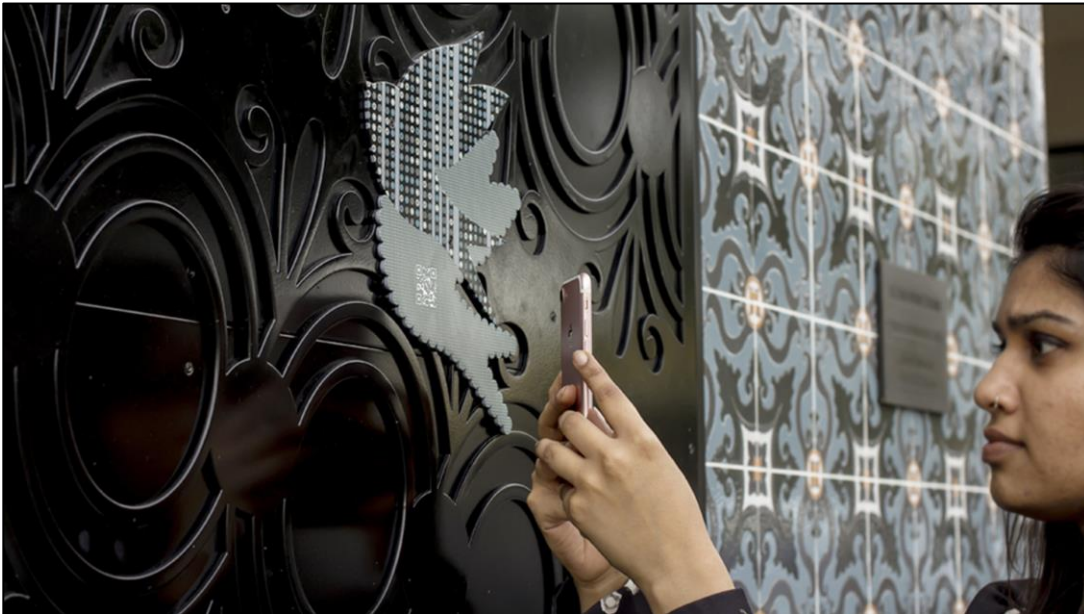


Elena Manferdini

Previous Work

La Peer Hotel Gate - 2017 North La Peer Drive, West Hollywood, CA

The gate design by Atelier Manferdini is a contemporary version of the renaissance "Cabinet of Wonders". It plays with the notion that the door is a place of discovery and wonder.



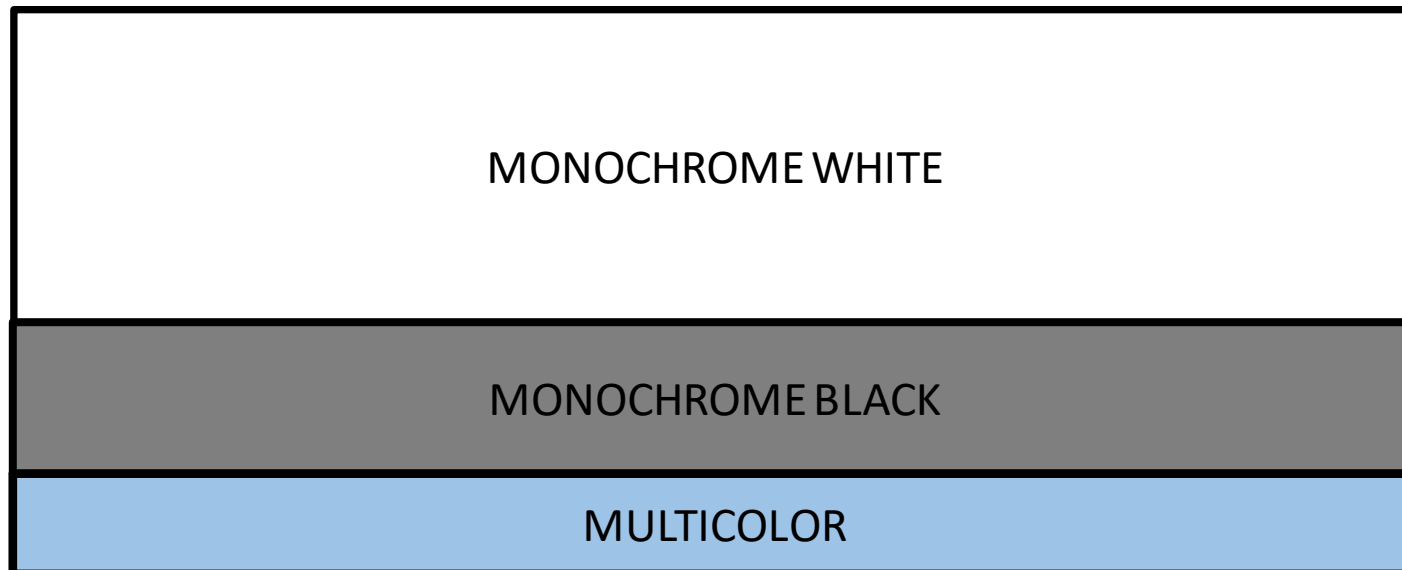
The relationship between colors and audience has been a silent but constant protagonist of Atelier Manferdini artistic production.

In particular, the inspiration for the Crystal Substation proposal is stemming from an interest in the immersive effects that vast chromatic fields can inspire into the viewers.

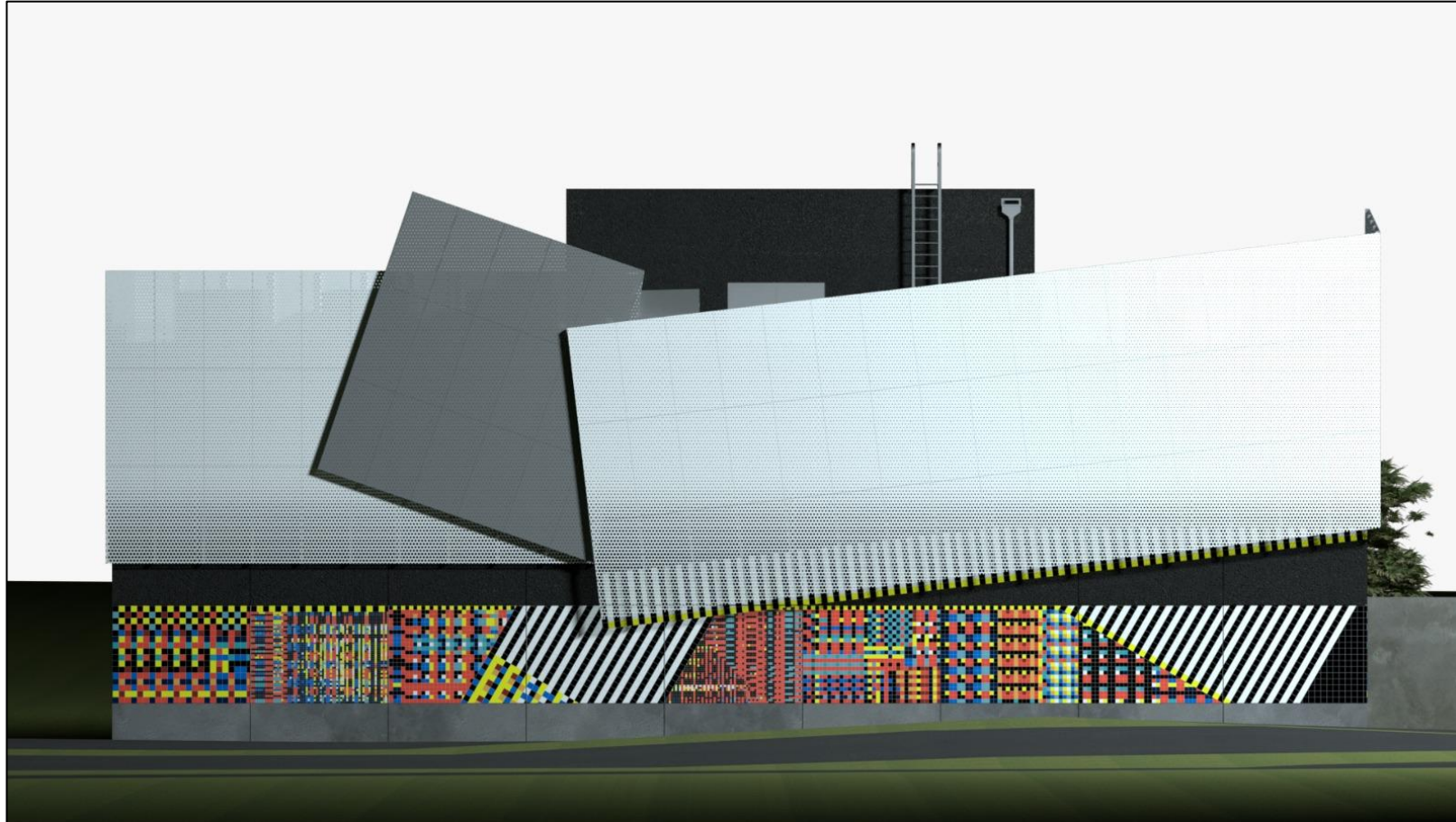
Not surprisingly, among the many working scales an artist can choose, Atelier Manferdini’s canvas of choice is a building facade, because its broad size can enact an immersive experience through which basic human emotions could be communicated.

“inVisible” – Atelier Manferdini

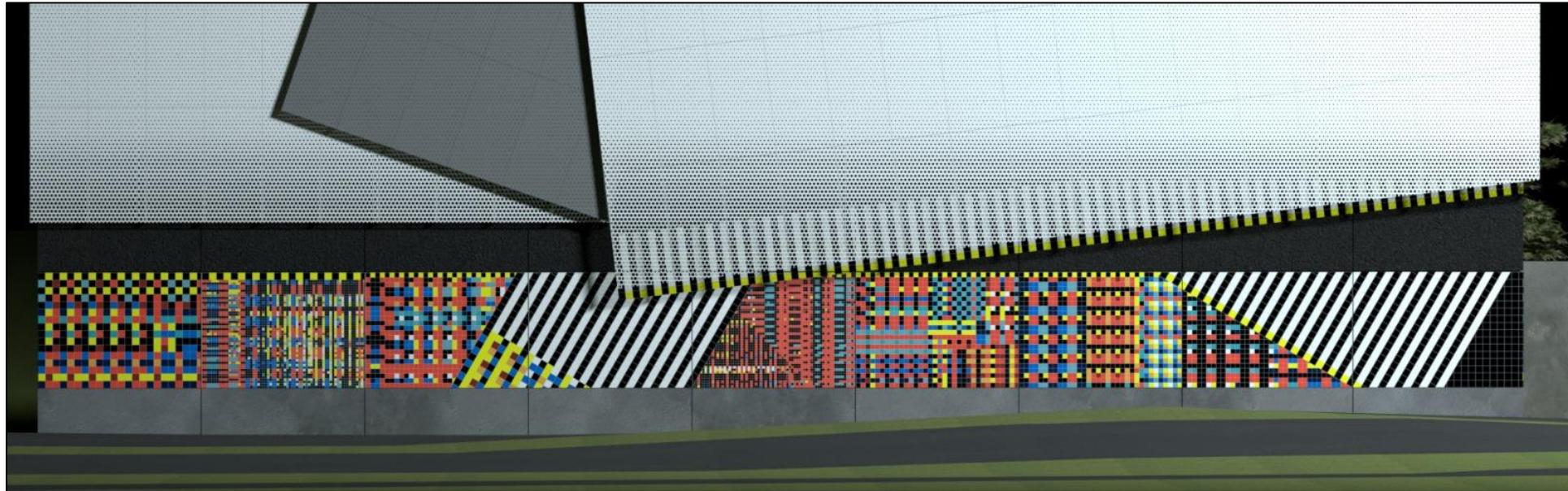
“inVisible” - Atelier Manferdini proposal for Dominion Energy—consists of two stacked expansive, frontal, bleeding fields—fusing form and colors, that divide horizontally the façade.



“inVisible” – Atelier Manferdini



“inVisible” – Atelier Manferdini



The lower half represents a buzzing **electric field**, rendered in colorful ceramic tiles; the upper half represents a folded **sky**, carried out in monochrome metal panels. In between, a single horizontal division of the façade that calls up associations with an unreachable horizon.

“inVisible” – Atelier Manferdini



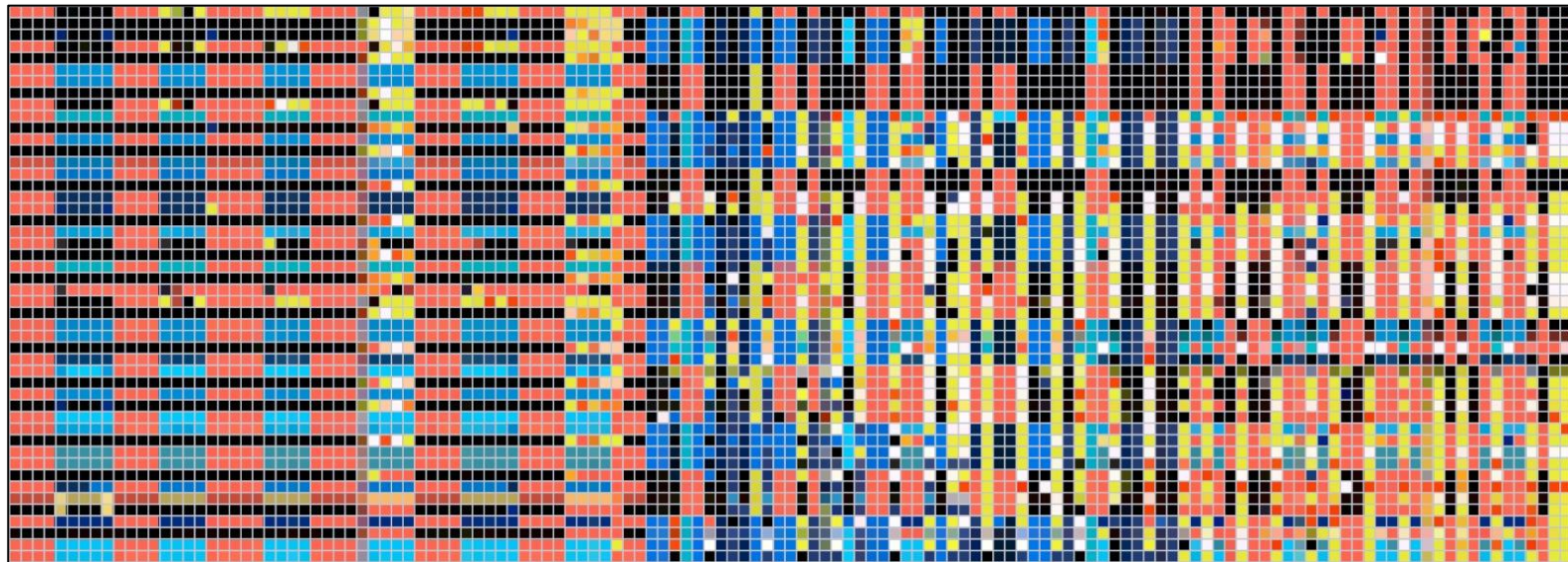
At the pedestrian scale - the ceramic piece offers the audience a vibrant aesthetic experience through the visualization of **ELECTRICITY**.

“inVisible” – Atelier Manferdini

Every day, we are surrounded by one of the most important innovations of all time, electricity. Its energy powers every area of our modern lives.

And yet we can't see it.

Like gravity, electricity is an invisible force we only recognize when it acts upon other objects.



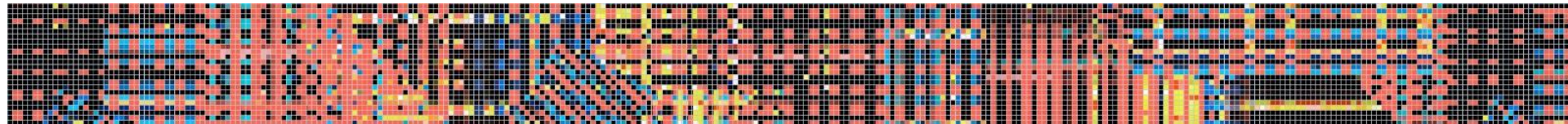
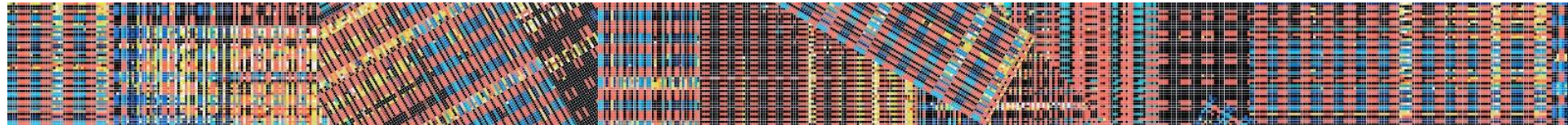
“inVisible” visualizes electric power and asks the audience to bring into question the relationship to this invisible, yet fundamental technology.

“inVisible” – Atelier Manferdini



The artwork promotes a heightened awareness of the process and tools used in the creation and distribution of energy power.

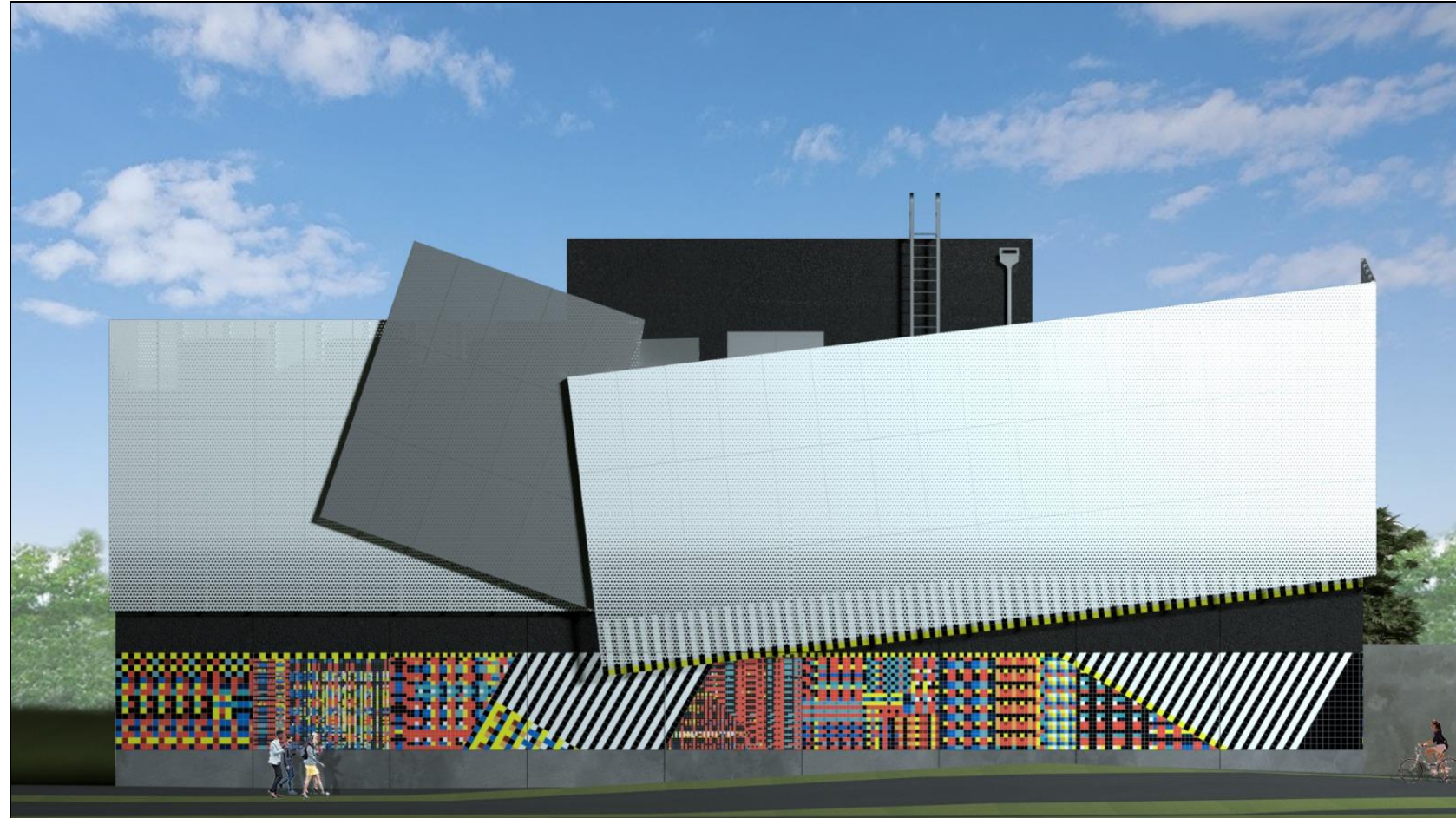
“inVisible” – Atelier Manferdini



The scalar relationships between the various tiles (2:4:6) is in reference to the programmatic function of a substation, a facility that transforms voltage from high to low and vice versa.

“inVisible” – Atelier Manferdini

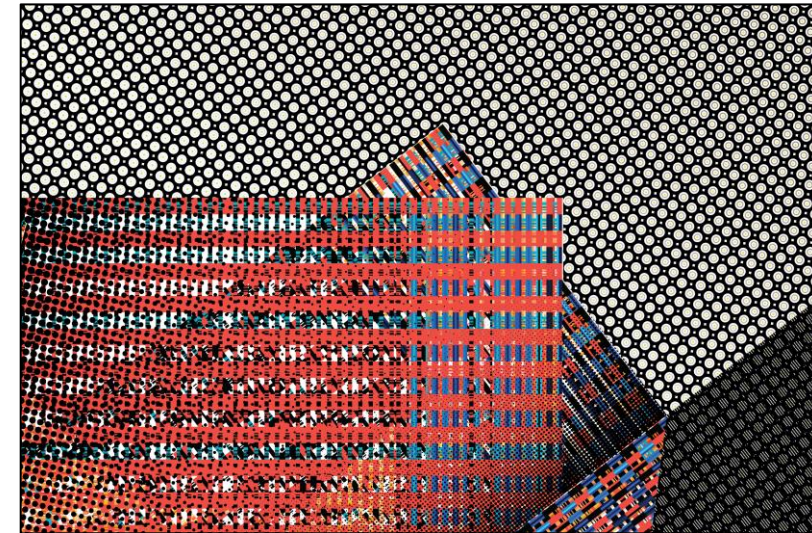
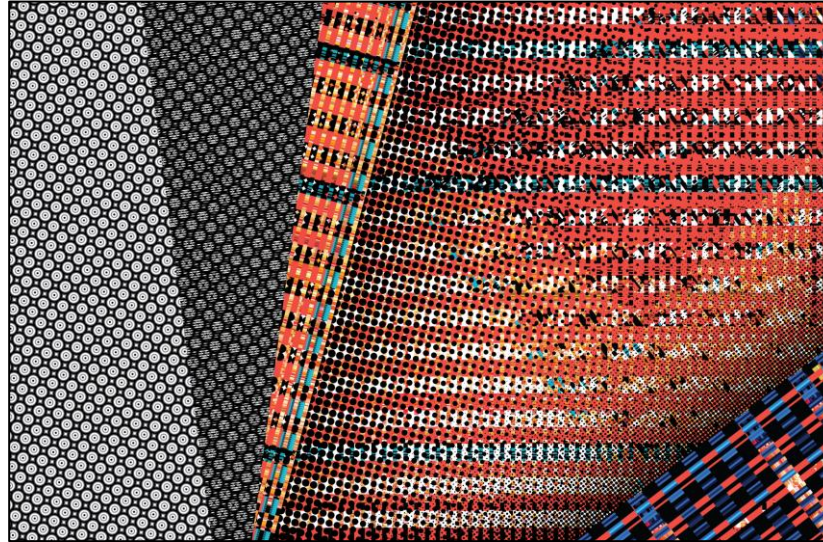
At traffic scale- a mesmerizing monochrome-field of immense scale embraces the audience in an immersive and introspective view towards the sky.



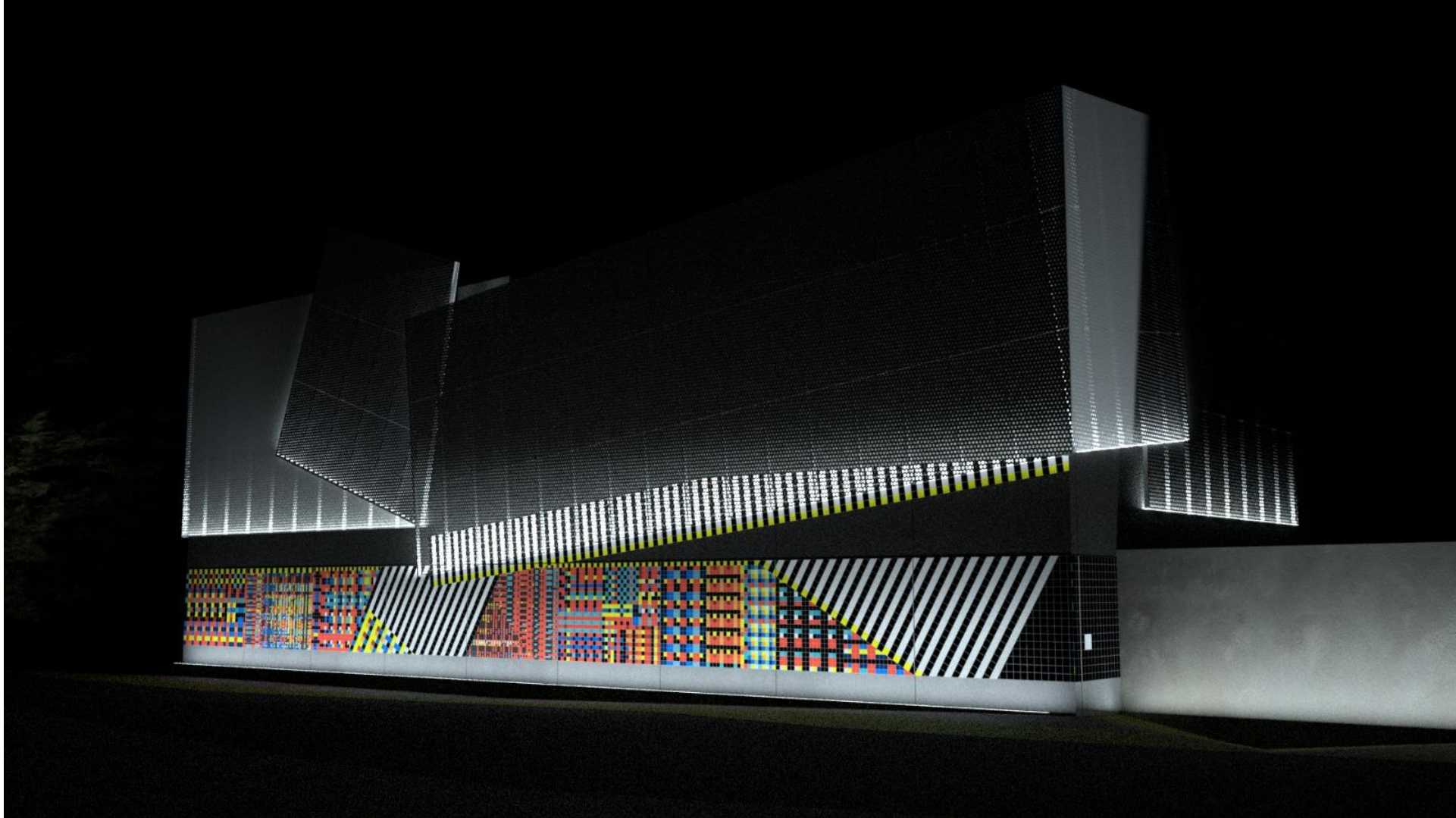
“inVisible” – Atelier Manferdini

The abstract surface folds and reveals what hides behind.

The sky, often a repository for human hopes, faith and progress, folds back and reveals to the viewers our shared human condition.



“inVisible” – Atelier Manferdini



April 2021 – Construction to begin

Early 2022 – Construction of new building complete

Spring 2022 – Art installation

Fall 2022 – Plaza redesign

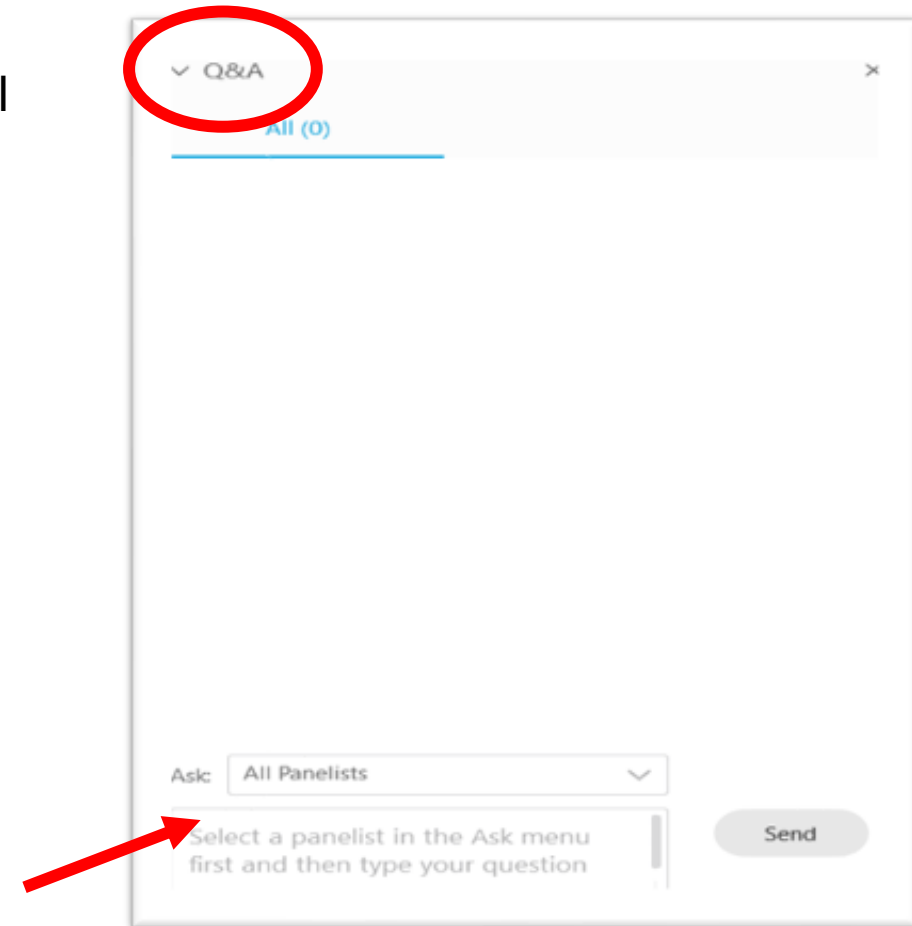
Spring 2023 – Overall project target completion date

Once construction is complete, all work areas will be restored to previous conditions.

This schedule is subject to change based on weather, etc.

- Submit questions through the Q&A at any time, select 'All Panelists'
- Questions will not be answered until we reach the Q&A session at the end of the presentation.
- If you have a specific question and would like us to follow up with you after the meeting, include your name and preferred method of contact.

Thank you for your patience as we try to make this virtual meeting as engaging as possible!



What's Next?

- You can submit all future questions via email **powerline@dominionenergy.com** or by calling **888-291-0190**
- This meeting will be recorded and posted on our website for those who were unable to attend.
- For more information, please visit: **DominionEnergy.com/crystal**



Thank you for joining!